

# M1

## Signature Passthrough Dishwasher – 450mm Rack W 630mm x D 650mm x H 1530mm

The Starline M1 represents the next stage of 35 years of local evolution, featuring a sharper looking machine with upgraded electromechanical controls, multiple cycle options and all the services required for a seamless installation. Maintaining HACCP food safety reporting is now more simple than ever with the addition of digital wash and rinse temperature displays, making for easy and clear readings.

The M1 is an ideal solution where space in a restaurant, café or aged care facility is at a premium. With the use of 450mm racks the M1 requires a bench gap just of 510mm and is compatible with 600mm deep benching. The 450mm plastic dishracks hold sixteen x 230mm plates, only 2 less than the 500mm dishracks which hold 18 plates.

Starline dishwashers have been made in New Zealand since 1981, and are engineered specifically for our unique local conditions and regulations. The renowned reliability of the machines is also backed by most extensive service network and spare parts inventory in the country, ensuring that your Starline will not let you down.

### Standard Features

- Autostart on door closure 1, 2 and 3 minute cycles
- Washes up to 840 plates per hour/960 glasses per hour
- Compatible with 400mm to 450mm glass and dish racks
- QuikConnect Installation with everything you need:
  - Water supply hose
  - Dual detergent and rinse aid pumps with injector lines
  - Drain pump outlet hose
  - 15 amp plugset
  - No commissioning required
- Reliable results through upper and lower wash/rinse arms with precision moulded jets
- Easily serviced electromechanical design
- Durable stainless steel construction
- Low hot water consumption of 2.6 litres per cycle

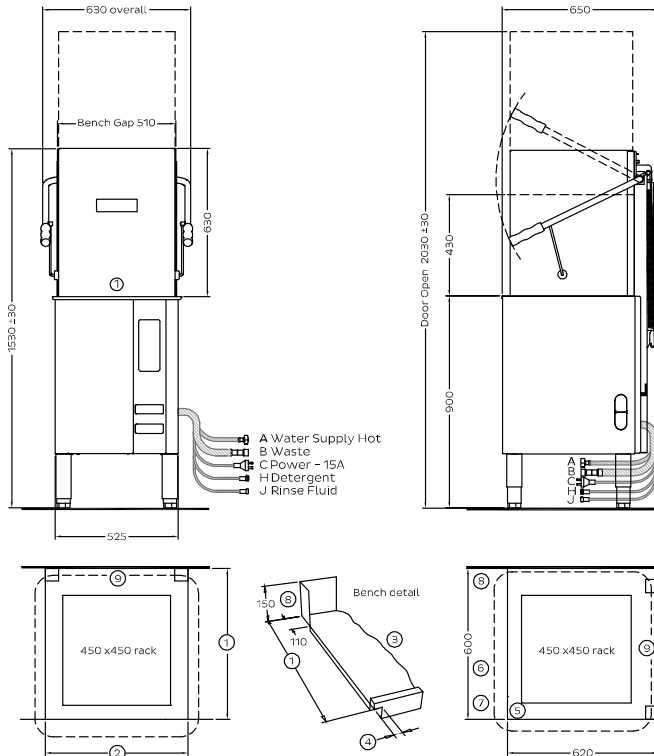
### Includes:

- 1x 600 70081 - 450mm dish rack
- 1x 600 70080 - 450mm cup rack
- 1x C660503 - cutlery container



# M1

Signature Passthrough Dishwasher – 450mm Rack  
W 630mm x D 650mm x H 1530mm



- In-line Installation**
- ① Minimum Depth 600
  - ② Bench gap 510
  - ③ left side is mirror image
  - ④ Notch 25

- Corner Installation**
- ⑤ wall to front inside corner
  - ⑥ machine must face left for controls access
  - ⑦ allow 300 clearance to front for service access
  - ⑧ splashback return no higher than 150
  - ⑨ No obstruction behind machine

<b>A Hot water</b>	Temperature Connection Pressure Flow Quality Backflow Prevention Consumption	65°C 3/4" male; hose supplied 200–350kPa 20 litres per min Potable & soft Atmospheric Vacuum breaker 2.6litres per cycle
<b>B Waste</b>	Connection	Hose supplied for 38mm open standpipe 750 high or connection to sink trap
<b>C Electrical</b>	Single phase	230V 50Hz 15Amp (plugset supplied)

**Nominal Power Consumption**  
1P / 15A = 3.0kW rinse / 2.5W wash / 3.37kW max

<b>Dimensions</b>	Width Depth Height Weight	630mm 650mm 1530mm 73kg
-------------------	------------------------------------	----------------------------------

<b>Packed Dimensions</b>	Width Depth Height Weight Cubicmetres	695mm 750mm 1440mm 94kg 0.77m <sup>3</sup>
--------------------------	---	--

<b>Water Quality Requirements</b>	Hardness Min Max	ppm 20 100	pH 7 8
-----------------------------------	------------------------	------------------	--------------

Ions	Cl <sup>-</sup>	SO <sub>4</sub>	Fe	Mn	Cu	CL <sub>2</sub>
Max mg/l	100	400	0.1	0.5	0.05	0.1

Refer operator manual for installation instructions



## ISO9001

All Starline products are designed and manufactured by Washtech using the internationally recognised ISO9001 quality management system, covering design, manufacture and final inspection, ensuring consistent high quality at all times.

In line with policy to continually develop and improve its products, Washtech reserves the right to change specifications and design without notice.

WASHTECH LTD  
PO Box 90-548  
Auckland 1142  
414 Rosebank Road  
Avondale  
Auckland 1026  
New Zealand  
Phone 09 829 0930  
info@washtech.co.nz  
www.starline.co.nz



On call service where you are. Washtech provides full service backup, 24 hours a day, 7 days a week with factory based technicians and a comprehensive nationwide network of independent service providers. STARLINE SERVICE 09 829 0923 © Copyright Washtech 2016

an Ali Group Company



The Spirit of Excellence