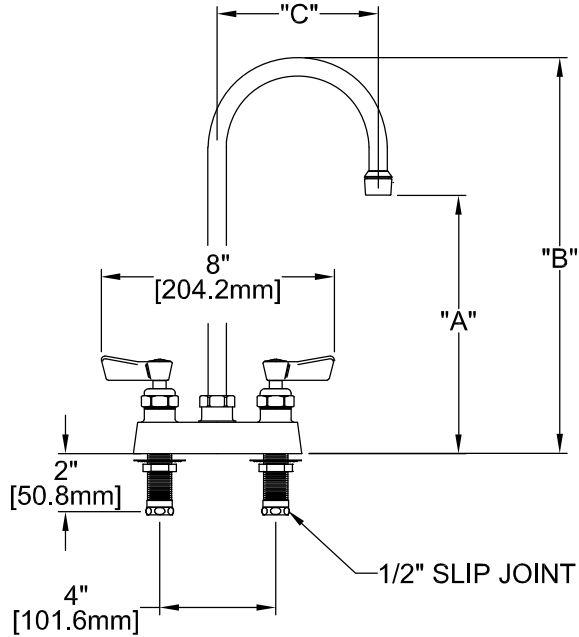
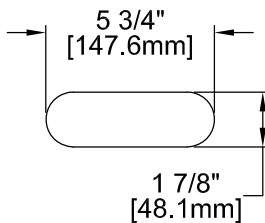


Customer/Wholesaler:	Date:	Job Name:	Model Specified:	Quantity:
Contractor:		Architect/Engineer:		

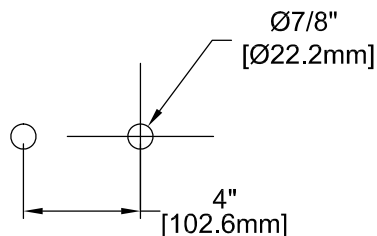


FOOTPRINT:



MODEL	DIM "A"	DIM "B"	DIM "C"
3515	8-1/2" [215.9mm]	12-1/2" [317.5mm]	5-1/2" [139.7mm]
3525	4-3/4" [120.7mm]	8-3/8" [212.7mm]	3-1/2" [88.90mm]

ROUGH-IN:



MODEL:

- 3515 FAUCET 4DLH 12SGN
- 3525 FAUCET 4DLH 06SGN

OPTIONS OR MODIFICATIONS:

- OTHER _____

FEATURES:

- * 4" C/C DECK MOUNT
- * SWIVELING SEAT DISKS
- * HOT SIDE STEM - RIGHT HAND
- * COLD SIDE STEM - LEFT HAND
- * STAINLESS STEEL SEATS
- * STAINLESS STEEL SEAT SCREWS
- * STAINLESS STEEL HANDLE SCREWS
- * * 1/2" SLIP JOINT KIT

SYSTEM LIMITS

- * TEMP: 40°F MIN. TO 160°F MAX.
- * PRESSURE 200 PSI MAX. STATIC
- * 2.20 GPM AT 60 PSI (8.3 L/min @410 KPa)

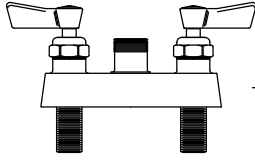
SHIPPING WEIGHT

- * 4.75 LBS

PRODUCT COMPLIANCE:

- * ASME A112.18.1 / CSA B125.1
- * NSF 61 - Section 9
- * NSF 372 (Low Lead Content)

Replacement Parts for Deck Mount Faucets



3500
CONTROL VALVE

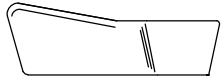


2000-7500
SCREW

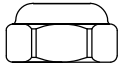


2000-8000
RED BUTTON
AND
2000-8001
BLUE BUTTON

2000-0002
LEVER HANDLE KIT



LEVER HANDLE



2000-3002
BIBB CAP



73657
DUCK GASKET

3000-0000
RH SWIVEL STEM
REPAIR KIT
OR
3000-0001
LH SWIVEL STEM
REPAIR KIT



2000-5000
WASHER



3000-0010
LH SWIVEL STEM
OR
3000-0011
RH SWIVEL STEM

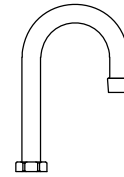
2000-5003
SEAT WASHER

1000-7502
SCREW

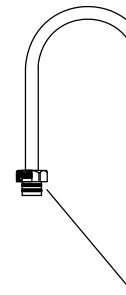
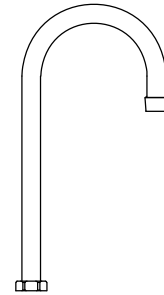


73521
LUBE

3968
6" SWIVEL
GOOSENECK SPOUT



3965
12" SWIVEL
GOOSENECK SPOUT



12564
2.2 GPM
AERATOR

73684
SPOUT NUT



20020
SNAP RING



1600-5000
SPOUT
O-RING



73521
LUBE



19119
SWIVEL SPOUT
RETRO-FIT KIT



73794
SLIP JOINT KIT