

TEMPORARY SHADES

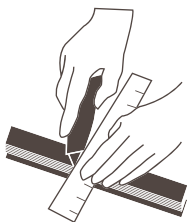
**CHIC
OLOGY**

⚠ PLEASE DO NOT hang the temporary shade close to or near flames (candle, gas, heaters, etc.)

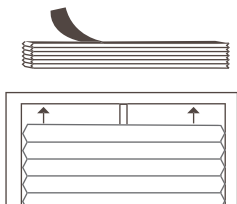
⚠ TAPE IS NOT RECOMMENDED for use on varnished, lacquered, or freshly painted surfaces.

⚠ DO NOT USE ON WALLPAPER. If in doubt, test before using.

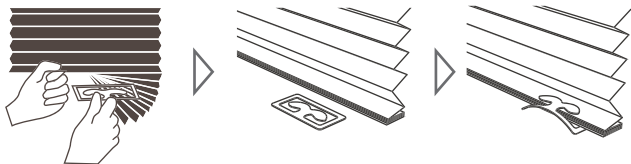
1 Trim as needed width with a utility knife.



2 Peel off the paper of the adhesive tape on the other side, and press the adhesive directly onto the window pane or wall surface.



3 To keep the shade open, simply adjust it to your preferred height and then slide the included clips over the pleated.





Need Further Assistance?

We stand by our products and we're here to help. Call or email us, and expect a reply within 1 business day.

Visit our website for how-to videos and FAQs.

Website: www.chicology.com/help

Email: support@chicology.com

Phone: 1 (866) 999-6188

Hours: Mon-Fri 8AM to 5PM (PST)



 Chicology Home

 Chicology Home

 Chicology Home

 Chicology Home