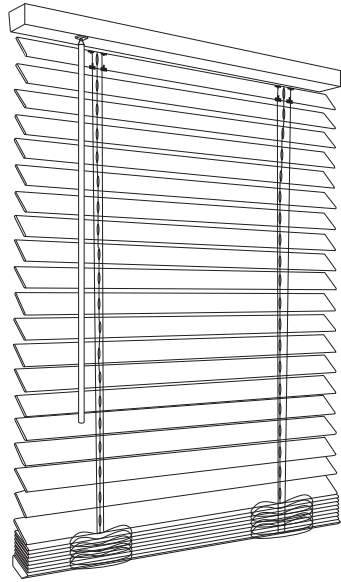


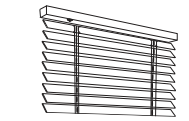


CORDLESS 1-INCH VINYL MINI BLIND INSTRUCTIONS

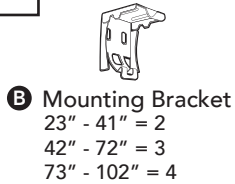


PREPARATION

1 Check the Hardware



A Vinyl Blind x 1



B Mounting Bracket
23" - 41" = 2
42" - 72" = 3
73" - 102" = 4



C Wand x 1



D Screw
23" - 41" = 4
42" - 72" = 6
73" - 102" = 8

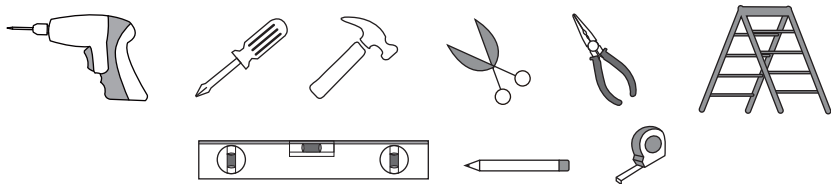


E Hold down
Bracket x 2



F Mini Screws x 4

2 Gather other necessary tools

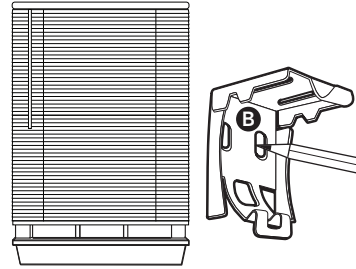


INSTALLATION | OUTSIDE MOUNT

1 Marking Holes

Mark the screw holes at the back or top of the **bracket B**.

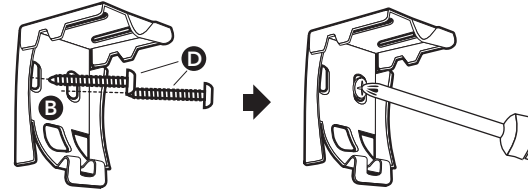
- Pre-drill holes for mounting screws and use level at top of brackets to ensure straight alignment.



2 Installing Brackets

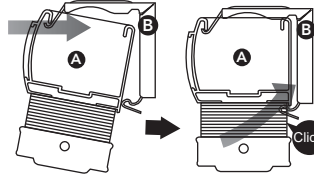
Attach the **brackets B** with the **screws D** provided and tighten the screws in place.

- When mounting **brackets** on wall board or plaster, use the **anchors**.



3 Inserting

Insert the top front of the **head rail A** into the front lip of the **brackets B**. Push the rail into place.

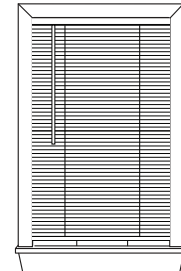


INSTALLATION | INSIDE MOUNT

1 Marking Holes

Mark the screws holes at the back or top of the **bracket B**.

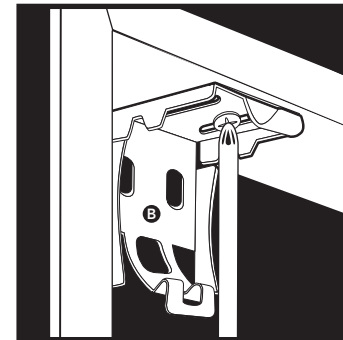
- Pre-drill holes for mounting screws.
- For wider widths and added support, install the center support bracket when provided. Install at approximate center of the headrail.



2 Installing Brackets

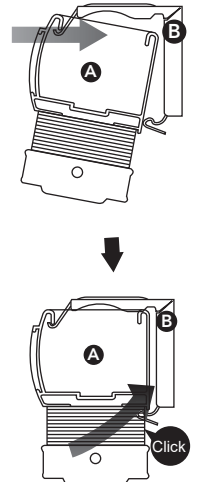
Attach the **brackets B** with the **screws D** provided and tighten the screws in place.

- Use the provided when attaching the **brackets** to the ceiling or when the depth of the recess exceeds 1-1/2 inches.
- When mounting **brackets** on wall board or plaster, use the **anchors**.

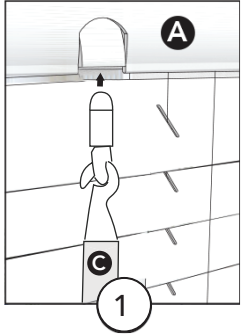


3 Inserting

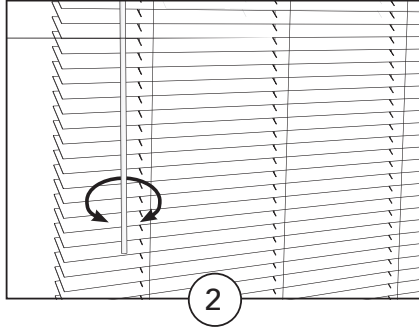
Insert the top front of the **head rail A** into the front lip of the **brackets B**. Push the **head rail** into place.



4 Attach Tilter and Wand



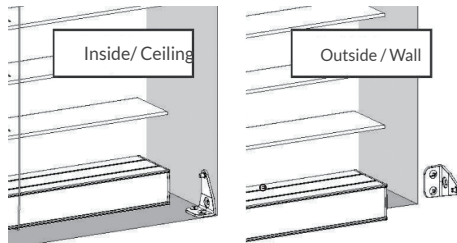
1. Insert the wand **C** through the hole.



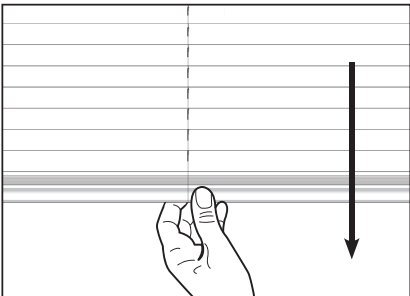
2. Rotate the wand **C** clockwise or counterclockwise to open or close the blind slats.

4 Installing the hold down brackets

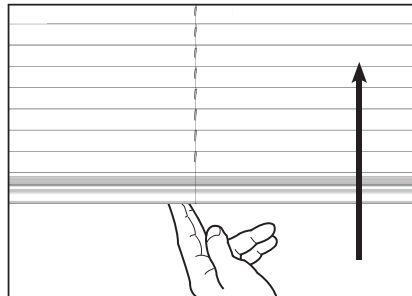
Optional: 'Hold down brackets' are used to keep your blinds steady. Install the hold down brackets **E** with mini screws **F** next to the blinds aligning the bottom rail.



Quick How-to-use Guide



To lower the blinds pull down from the bottom to the desired height.



To raise the blind push up from the bottom to the desired height

Chicology Ready-Made Blinds Warranty Limited One Year Warranty from the Date of Purchase

What is Covered:

All of our blinds are warranted against manufacturer defects in materials or workmanship provided that you are the original purchaser of the product, and the product was installed according to our instructions.

What is Not Covered:

- Normal wear and tear
- Consumer damages caused by accidents, alternations, abuse of the product, exposure to salt air, misuse, or damages from pets or insects.
- Damages resulting from removal and reinstallation in the same or any other window or application, or failure to follow instructions, such as measurement, installation, cleaning, and maintenance.
- Any products that, with the passage of time, has yellowing or cracking of plastic parts.
- Wrong measurements are not covered by the warranty and are not refundable.

To Report Shipping Damages:

If damage occurred during shipping, please email and call us immediately and report within **14 calendar days** or else you may be denied for your damaged product.

To Obligations to the consumer:

The obligations of Chicology are limited to the repair or replacements of parts or products found to be defective. Chicology will determine if the product is defective or not and may replace the product. If the product is found to have manufacture defects, we will repair or replace the product. Colors do vary from lot to lot, and may not match original product exactly. Discontinued items will be replaced with the most current product of the same price.

Your Rights under State law:

This limited warranty gives you specific legal rights, and you may have other rights, which vary from state to state.

Defective Product:

If you believe your shade has a manufacturing defect, please email and call us.

Need Further Assistance?

We stand by our products and we're here to help. Call or email us, and expect a reply within 1 business day.

Visit our website for how-to videos and FAQs.

Website : www.chicology.com/help
Email: support@chicology.com
Phone: 1 (866) 999-6188
Hours: Mon-Fri 8AM to 5PM (PST)



f Chicology Home p Chicology Home
@Chicology Home y Chicology Home