

How to setup recording to MicroSD card

1. Overview

Phylink camera has a built in DVR software to record images and videos to its own MicroSD card (which should be purchased separately) . The standalone MicroSD recording features requires no other equipment to be on or even present at the camera location, and requires no software purchase.

This package dose not included a Micro SD card. Adding a Micro SD card to your camera will allow you to record footage and motion alerts directly to the MicroSD card for future review. The recorded files may be reviewed remotely on your phone / computer when using Phylink App / software.

2. Compatibility

The Phylink camera can only support MicroSD card, not a SD card. The MicroSD card is smaller than SD card. Any microSD card which is more than 4GB will be SDHC or SDXC and is compatible with the camera. The capacity range for SDXC Micro card, beginning at 64 GB but reaching as high as 128 GB.

We have tested SanDisk/Samsung 32GB, 64GB and 128GB Class 10 Micro SDXC microSD Card, they can work well with our camera.

We always recommend users to get a SD card with good brand which offers fast read and write, it is important for best use in the NVR for faster recording and playback.

3. Formatting the microSD card

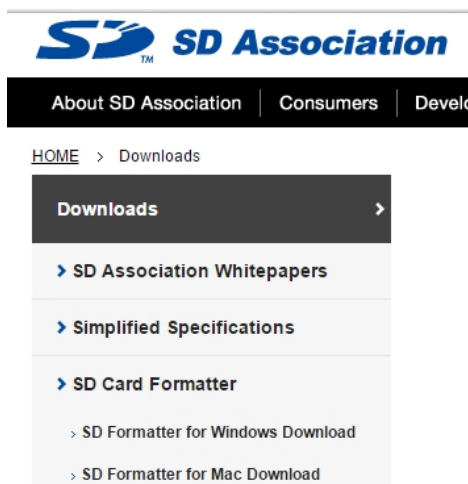
The camera only supports FAT32 format, if the microSD card is exFAT, NTFS or non-FAT32 format, you need to format it using a computer before you insert it to camera.

You have two ways to format a microSD card:

1. You can format a new SD card using the camera's format menu. For a new microSD card which has never been formatted, you can use the camera to format it.

2. If the microSD card has been formatted as NTFS or other Non FAT32 format, the camera will can not recognize it. So you have to format it to FAT32 format on a computer or laptop. And you should download and use this formatting tool:

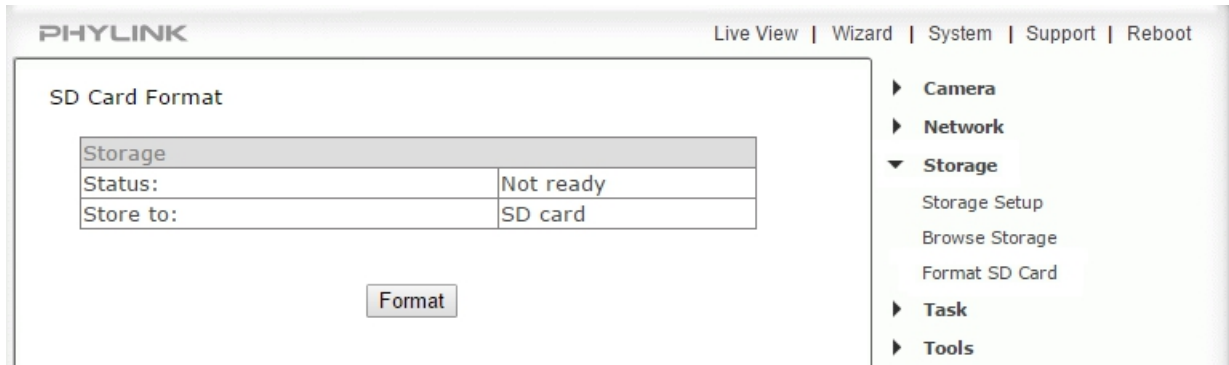
<http://www.sdcard.org/downloads/index.html>



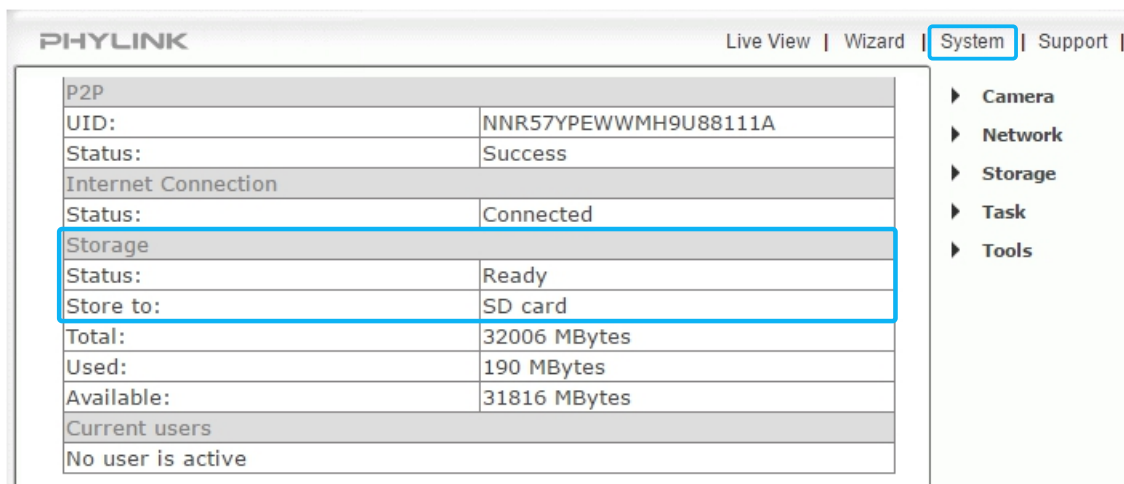
Note: All files will be lost after formatting.

3.1 Format a new microSD card using the camera's format menu

To format a new SD card, log in to the camera via browser on your computer, click "Format" button under Settings > Storage > Format SD card menu. The SD card format can take a few minutes depending on the size of the SD card. After the SD card is formatted, the Format SD card page will temporarily display status as "Not Ready" even the format page display "format successfully".



Click "system" menu on the right top of the setting page, the storage status will display the real status of the SD card after formatting.



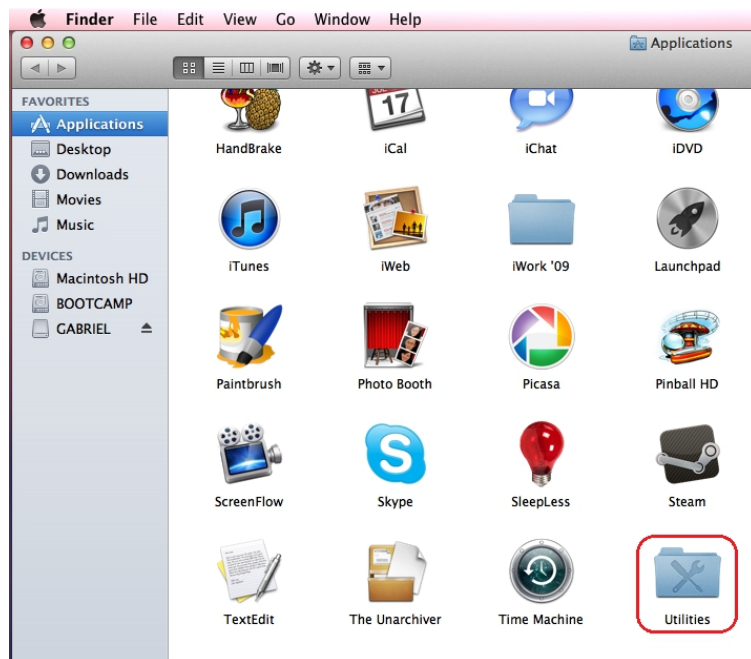
3.2 Format a microSD card using Disk Utility on Mac

To format a microSD card on your computer, you may need to use a "microSD Card Adapter" or "USB Card Reader for Micro SD". FAT32 is a universal format that is compatible with Mac OS X, Windows, Linux and DOS systems. To format a microSD card, please follow the steps listed below:

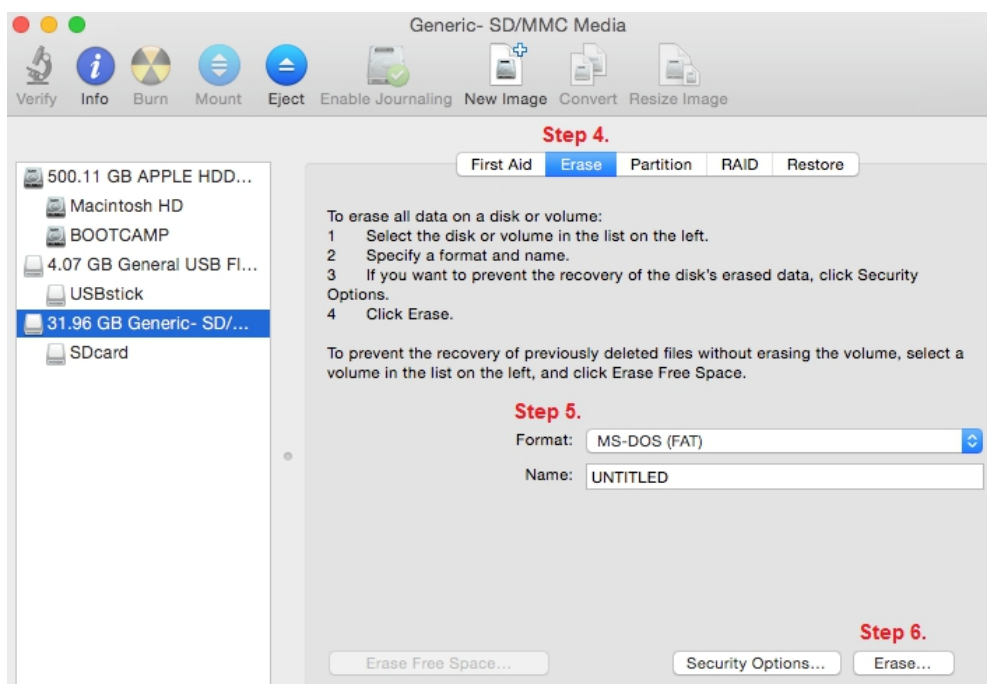
Step 1. Insert a microSD card into your Mac's USB port. The drive icon appears on your desktop.

Step 2. Double-click the "Utilities" folder in the Applications section in Finder.

Step 3. Double-click "Disk Utility." Choose your flash drive from the list of disks on the left side of the utility.



Step 4. Click the "Erase" tab to access the disk-formatting settings.



Step 5. Choose "MS-DOS (FAT)" from the format drop-down list.

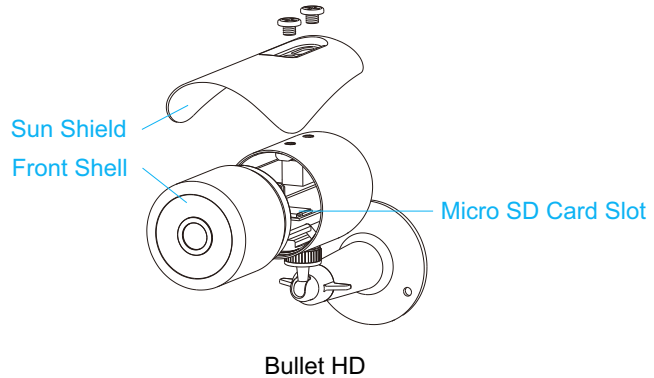
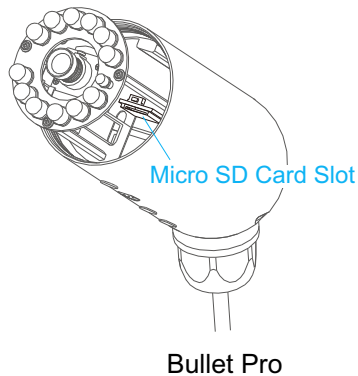
Step 6. Click "Erase..." to remove all the information on the flash drive and reformat it to the chosen format.

4. MicroSD card installation

4.1 MicroSD card installation for Bullet HD and Bullet Pro

Note:

- The camera must be powered off before inserting the Micro SD card. The camera will only recognize the card if inserted before startup. Every time the card is re-inserted, you will need to turn the power off and then turn the power on again to let the SD card be recognized.
- It will be easier if you remove the sun shield before you unscrew the front shell.
- Please note that you should unscrew the front shell from the camera's main body by turning "counter-clockwise".



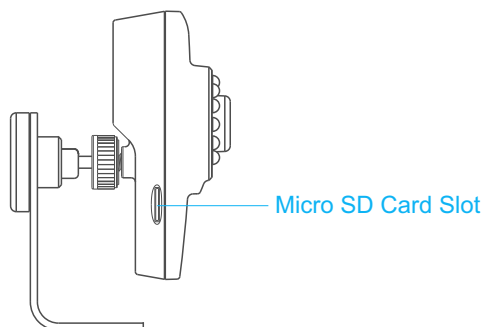
To insert the micro SD card to the camera, follow the below steps:

1. Power off the camera as applicable.
2. Remove the sun shield.
3. Unscrew the front shell from the camera's main body by turning counter-clockwise.
4. Hold the MicroSD card with the printed side facing upward and the golden pins facing toward the MicroSD slot. Press the MicroSD card into the slot until you hear a click. Be careful do not touch the lens.
5. Avoid catching internal wires, tighten the front shell by hand only.

4.2 MicroSD card installation for PLC-223W/PLC-233W

To insert the micro SD card, follow the below steps:

1. Power off the camera as applicable.
2. Please make sure that you insert the SD card in the correct direction. Hold the MicroSD card with the printed side facing upward and the golden pins facing toward the MicroSD slot. Press the MicroSD card into the slot until you hear a click.



Note:

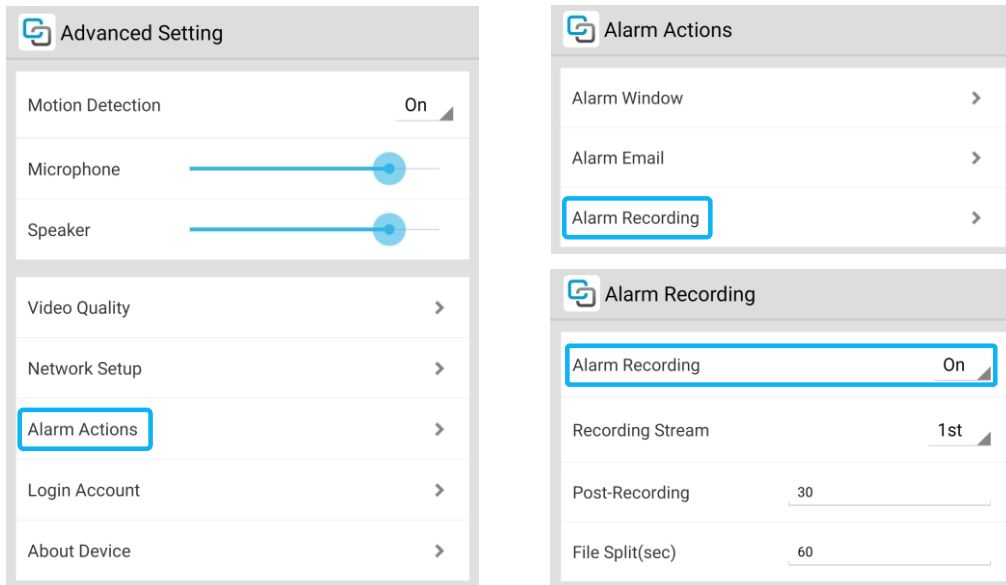
- The camera must be powered off before inserting the Micro SD card. The camera will only recognize the card if inserted before startup.
- Every time the card is re-inserted, you will need to turn the power off and then turn the power on again to let the SD card be recognized.

5. Setting up SD card recording

5.1 Setting up SD card recording via App

You can set up SD card recording via app on iOS or Android device quickly.

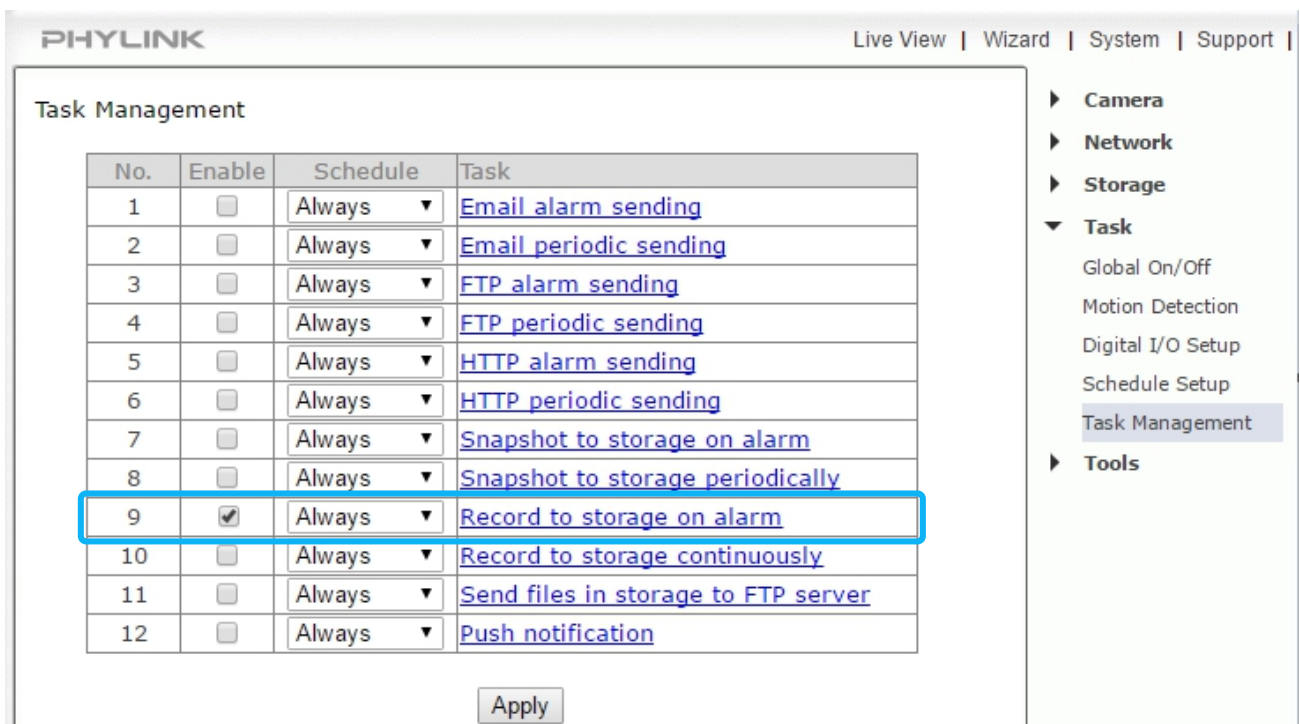
Start the PHYCAM App, go to Edit Camera > Advanced Setting > Alarm Actions > Alarm Recording and switch on the Alarm Recording.



Note: For more advanced settings for recording you need to log in to the camera using browser.

5.2 Setting up SD card recording from browser

You can also login the camera from browser, go to Setting > Task > Task Management menu and enable the "Record to storage on alarm" task.



And now, your camera can record the video while there is a motion triggered.

For more details about recording and motion detection, please refer to the related sections on user manual.

Note: Do not remove the MicroSD card while recording is active. If any recording task is enabled, you should disable recording and wait 1 minute before removing the card. Errors caused by removal during recording might require reformatting.

Find additional support and information

For further support or information, visit <http://www.phylink.com> or contact support@phylink.com



Scan QR Code to get support

Phylink and the Phylink logo are trademarks or registered trademarks of Phylink Solutions LLC.
One Commerce Center-1201 Orange St. #600 Wilmington Delaware 19899 United States