

Data sheet for SIMOTICS S-1FK7

MLFB-Ordering data

1FK7063-2AC71-1RG0

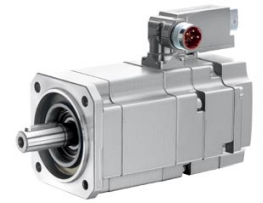


Figure similar

Client order no. :

Order no. :

Offer no. :

Remarks :

Item no. :

Consignment no. :

Project :

Engineering data		Mechanical data	
Rated speed (100 K)	2000 rpm	Motor type	Permanent-magnet synchronous motor
Number of poles	8	Motor type	Compact
Rated torque (100 K)	8.9 Nm	Shaft height	63
Rated current	4.4 A	Cooling	Natural cooling
Static torque (60 K)	9.10 Nm	Radial runout tolerance	0.040 mm
Static torque (100 K)	11.0 Nm	Concentricity tolerance	0.10 mm
Stall current (60 K)	4.3 A	Axial runout tolerance	0.10 mm
Stall current (100 K)	5.3 A	Vibration severity grade	Grade A
Moment of inertia	14.700 kgcm ²	Connector size	1
Efficiency	91.0 %	Degree of protection	IP64
Physical constants		Design acc. to Code I	IM B5 (IM V1, IM V3)
Torque constant	2.08 Nm/A	Temperature monitoring	Pt1000 temperature sensor
Voltage constant at 20° C	136.5 V/1000*min ⁻¹	Electrical connectors	Connectors for signals and power rotatable
Winding resistance at 20° C	1.45 Ω	Color of the housing	Standard (Anthracite RAL 7016)
Rotating field inductance	19.4 mH	Holding brake	without holding brake
Electrical time constant	13.40 ms	Shaft extension	Plain shaft
Mechanical time constant	1.47 ms	Encoder system	Encoder AM20DQI: absolute encoder 20 bits (resolution 1048576, encoder-internal 512 S/R) + 12 bits multi-turn (traversing range 4096 revolutions)
Thermal time constant	40 min		
Shaft torsional stiffness	34000 Nm/rad		
Net weight of the motor	11.1 kg		

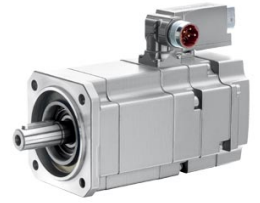


Figure similar

MLFB-Ordering data

1FK7063-2AC71-1RG0

Optimum operating point

Optimum speed	2000 rpm
Optimum power	1.9 kW

Limiting data

Max. permissible speed (mech.)	7200 rpm
Max. permissible speed (inverter)	4200 rpm
Maximum torque	35.0 Nm
Maximum current	18.5 A

Recommended Motor Module

Rated inverter current	5 A
Maximum inverter current	15 A
Maximum torque	29.50 Nm