

## Data sheet for SIMOTICS S-1FK7

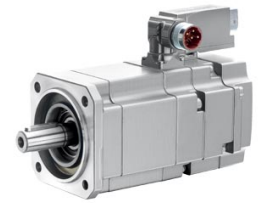


Figure similar

MLFB-Ordering data

1FK7060-2AC71-1QG1

Client order no. :

Order no. :

Offer no. :

Remarks :

Item no. :

Consignment no. :

Project :

Engineering data		Mechanical data			
Rated speed (100 K)	2000 rpm	Motor type	Permanent-magnet synchronous motor		
Number of poles	8	Motor type	Compact		
Rated torque (100 K)	5.3 Nm	Shaft height	63		
Rated current	3.0 A	Cooling	Natural cooling		
Static torque (60 K)	5.00 Nm	Radial runout tolerance	0.040 mm		
Static torque (100 K)	6.0 Nm	Concentricity tolerance	0.10 mm		
Stall current (60 K)	2.5 A	Axial runout tolerance	0.10 mm		
Stall current (100 K)	3.1 A	Vibration severity grade	Grade A		
Moment of inertia	7.700 kgcm <sup>2</sup>	Connector size	1		
Efficiency	90.0 %	Degree of protection	IP65		
<th colspan="2">Physical constants</th> <td>Design acc. to Code I</td> <td>IM B5 (IM V1, IM V3)</td>		Physical constants		Design acc. to Code I	IM B5 (IM V1, IM V3)
		Torque constant	1.91 Nm/A	Temperature monitoring	Pt1000 temperature sensor
		Voltage constant at 20° C	121.0 V/1000*min <sup>-1</sup>	Electrical connectors	Connectors for signals and power rotatable
		Winding resistance at 20° C	2.75 Ω	Color of the housing	Standard (Anthracite RAL 7016)
		Rotating field inductance	30.5 mH	Holding brake	without holding brake
		Electrical time constant	11.10 ms	Shaft extension	Plain shaft
		Mechanical time constant	1.75 ms	Encoder system	Encoder AS20DQI: absolute encoder single-turn 20 bits
		Thermal time constant	30 min		
		Shaft torsional stiffness	40500 Nm/rad		
		Net weight of the motor	7.1 kg		

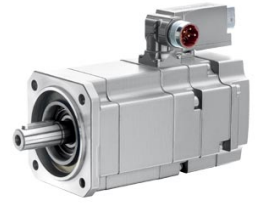


Figure similar

MLFB-Ordering data

1FK7060-2AC71-1QG1

### Optimum operating point

Optimum speed	2000 rpm
Optimum power	1.1 kW

### Limiting data

Max. permissible speed (mech.)	7200 rpm
Max. permissible speed (inverter)	4750 rpm
Maximum torque	18.0 Nm
Maximum current	10.7 A

### Recommended Motor Module

Rated inverter current	3 A
Maximum inverter current	9 A
Maximum torque	15.90 Nm