



ROVER 1™

PERSONAL GAMING STATION

USER MANUAL

*Shown here with PlayStation PS4 Slim not included.

BOX CONTENTS



ROVER 1 PORTABLE
GAMING STATION



HDMI CABLE 4 INCH
(10.1CM)



DUAL USB TO 5V
POWER CABLE



PS4 SLIM
TIGHT FIT PANEL

PRODUCT SPECS:

- TSA approved universal console gaming monitor. Chassis fits Xbox One X, Xbox One S, Playstation PS4 Pro and Playstation PS4 Slim with built in 13.3" FHD 1920 x 1080p 60 Hz Anti-glare IPS widescreen monitor
- HDMI In, HDMI Out for pass through play to external monitor, USB powered from console
- Built in 3 watt passive radiator subwoofer dynamic sound speakers and dual 3.5mm headphone jacks with Bluetooth 5.0 to play your own music source through the speakers while gaming
- Dimensions: H 3.97 in (10.1 cm) x W 12.1 in (30.8 cm) x Depth 10.5 in (26.7 cm)
- Weight 4 lbs, 9.6 oz (2.94 kg)
- 100-240V AC

USER GUIDE TRANSLATIONS

www.buddahtek.com/usermanual



Spanish: Para obtener instrucciones en español, escanee el código QR

German: Für Anweisungen in Deutsch scannen Sie den QR-code

Italian: Für Anweisungen in Deutsch scannen Sie den QR-code

French: Pour obtenir des instructions en français, scannez le

Portuguese: Para obter instruções em português, digitalize o código QR code QR

Korean: 한국어 지침은 QR 코드 스캔

Chinese: 有关中文说明，请扫描QR码

Japanese: 日本語の手順については、QRコードをスキャンしてください

Arabic: ةيبرسلا ةباجتسالا زمر حسب مق ، فيبرعلا ةغللاب تاميلاعت يلع لوصحلل

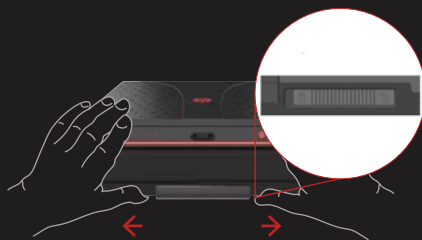
FUNCTIONS



BEFORE GETTING STARTED

NOTE:

Please read the entire user manual and the manufacturer's warranty before using the ROVER 1.



Unlock the Locking Bar

Place both hands on the sides of the ROVER 1. Using your thumbs, unlock the lock latches by sliding them outward.



Remove Accessory Box and Tight Fit Panel

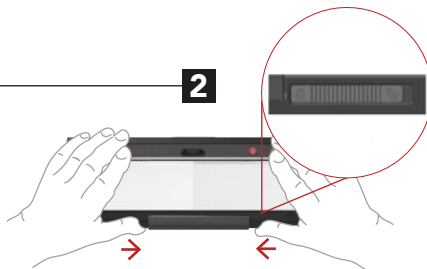
Slide out the locking bar until it stops to remove Accessory Box and PS4 Slim Tight Fit Panel (if applicable). Using both hands, pull Accessory Box out by the tab and hold the Tight Fit Panel to remove simultaneously.

GETTING STARTED: XBOX ONE S/X



Load Xbox into ROVER 1.

Once the accessories box and Tight Fit Panel are removed, place one hand in back to stabilize the ROVER 1. Line up the Xbox and carefully push it completely into open cavity until it stops.



Lock in the Xbox.

Push the locking bar until it stops or rests touching the front of the Xbox. Secure the bar in place by pushing both locks inwards.



Attach HDMI and dual USB Power Cable.

In the rear of the unit, attach the HDMI Out of the Xbox to the HDMI In of the ROVER 1. Insert the dual USB cable into both USB inputs on the Xbox. Insert the other end of the USB cable into the barrel jack power input on the back of the ROVER 1.



Power On.

Attach the Xbox power cord into the Xbox and plug into wall outlet. Open the screen. Power on the Xbox first, then push the red power button to power on the ROVER 1. The ROVER 1 indicates that it is on when the red LED lights up around the entire unit.

NOTE: Keep console loaded and play on a TV screen or monitor.

Connect the HDMI Out from the console to the HDMI In of the TV or monitor. Close the ROVER 1 screen. The picture and sound will now bypass the ROVER 1 and be routed to external source.

GETTING STARTED: PS4 PRO/SLIM

PS4 Slim ONLY
(If loading a PS4 Pro,
skip to Step 2)

START

1



Install the Tight Fit Panel

Using both hands, place Tight Fit Panel into unit by pushing evenly on the left and right ends and push with thumbs firmly into place. (Note: To remove bar, reach underneath with both hands and pull from the inside outward.)

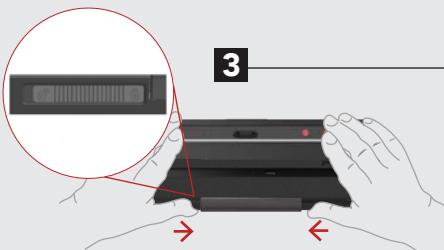
2



Load the Playstation into ROVER 1.

Place one hand in back to stabilize the ROVER 1. Line up and carefully push the Playstation completely into open cavity until it stops.

3



Lock in the Playstation.

Push the locking bar until it stops or rests touching the front of the Playstation. Secure the bar in place by pushing both locks inwards.

4



Attach HDMI and Dual USB Power Cable.

In the back of the unit, attach the HDMI Out of the Playstation to the HDMI In of the ROVER 1. In the front, insert the dual USB cable into both USB inputs on the Playstation and the other end of the cable into the barrel jack power input on the front of the ROVER 1.

FINISH

5



Power On.

Attach the PlayStation power cord into the PlayStation and plug into wall outlet. Open the screen. Power on the Playstation first, then the push the red power button to power on the ROVER 1. The ROVER 1 indicates that it is on when the red LED lights up around the entire unit.

FUNCTIONS: BUTTONS



Change Display Menu Functions

To adjust the display menu functions, first press menu, then press +/- buttons to scroll up/down the desired fields. Press OK to confirm selection. Once selection is highlighted in red, use +/- buttons to select subfields. Press OK to select the sub field then press +/- to adjust the value. Press menu to back out of fields and hide menu.

Connect to Bluetooth

When Bluetooth button icon has red light, the game console connected through the HDMI input is the chosen audio source.

To choose Bluetooth as the audio source, connect by pressing the button until it starts flashing blue. Choose 'ROVER 1' as the discoverable device on smart phone or Bluetooth audio device. The light will turn solid blue when paired successfully.

To hear both HDMI and Bluetooth audio source simultaneously, press button once again. The light will turn both red and blue to indicate both sources will be heard together.

Volume on ROVER 1 controls total volume, Bluetooth source controls its own volume relative to the total volume of HDMI source.
Mute Power ON/OFF

OK

Confirm Selection



Decrease Screen Brightness, DOWN function in Main Menu, and decrease input value



Decrease Volume



Mute



Power ON/OFF



Main Menu Function



Increase Screen Brightness, UP function in Main Menu and increase input value



Increase Volume



Back Function



Bluetooth: Pair with device named 'ROVER 1'



LUGGAGE
TROLLEY
STRAP AND
SECURE
PASSPORT
POCKET.

CABLE / ACCESSORY
STORAGE

WATERPROOF ZIPPER FOR
WEATHER RESISTANCE

CONTROLLER
STRAPS

PADDED ROVER 1 /
CONSOLE
COMPARTMENT

R1 Messenger Bag

To store your ROVER 1, first turn off unit and unplug the HDMI and USB power cables. Load unit in messenger bag bottom down, lock bar facing up. Store controllers in the two straps and all cables in the accessory storage pocket.

LIMITED WARRANTY AVAILABLE AT BUDDAHTEK.COM/WARRANTY

Xbox One® S, Xbox One® X and Xbox One® Elite Controller are registered trademarks of Microsoft Corporation. Playstation PS4® Slim, Playstation PS4® Pro are the registered trademarks of Sony Computer Entertainment. Images are used for illustration purposes only. Product features, appearance and specifications are subject to change without notice. © 2019 BUDDAH TEK, LLC. All Rights Reserved.



WARNING

This product can expose you to chemicals including Lead (Pb) which is/are known to the State of California to cause cancer, birth defects or other reproductive harm. For more information go to <http://www.P65Warnings.ca.gov>

Created and Designed in New York City, USA by Buddah Brown International, LLC
Made in China