

Zehnder Stellar Spa



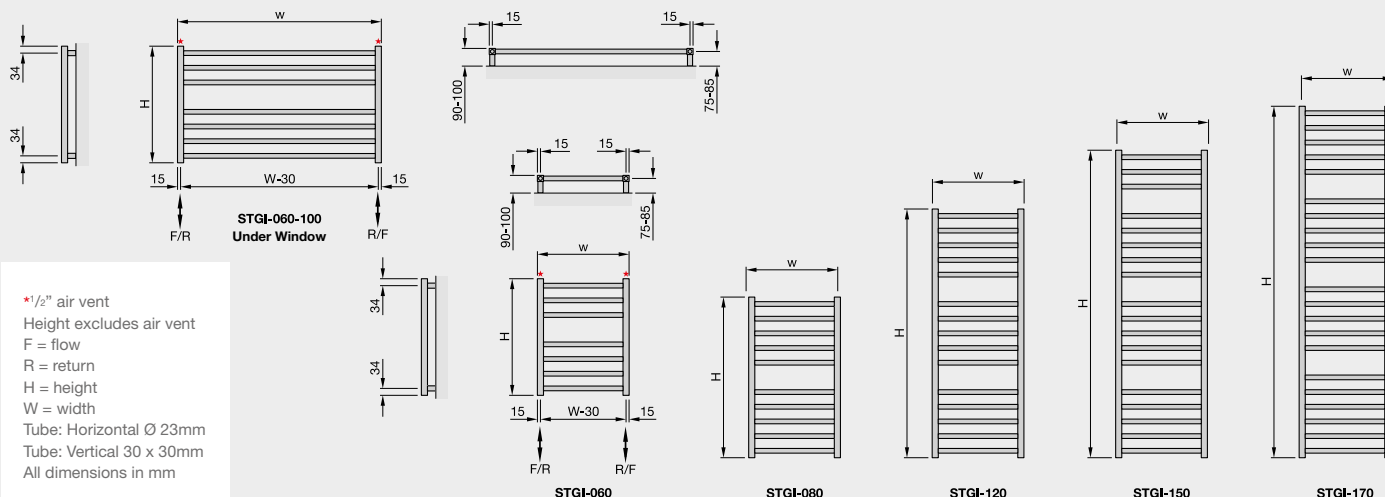
Stocked Items

In stock items highlighted in black	Height mm	Width mm	Finish	Output $\Delta T=50^{\circ}C$ Watts/btu All outputs certified to EN 442	Dual Fuel Immersion Rating in Watts	RRP (ex VAT)	RRP (inc 20% VAT)
Zehnder Stellar Spa Stainless Steel							
STGI-060-045	572	450	s/steel polished	161/549	100	£304	£364.80
STGI-060-100	572	1000	s/steel polished	272/928	150	£545	£654.00
STGI-080-030	788	300	s/steel polished	171/583	100	£305	£366.00
STGI-080-045	788	450	s/steel polished	220/751	150	£365	£438.00
STGI-080-050	788	500	s/steel polished	234/798	150	£386	£463.20
STGI-080-060	788	600	s/steel polished	243/829	150	£429	£514.80
STGI-120-030	1220	300	s/steel polished	240/819	150	£434	£520.80
STGI-120-045	1220	450	s/steel polished	309/1054	200	£497	£596.40
STGI-120-050	1220	500	s/steel polished	353/1204	250	£524	£628.80
STGI-120-060	1220	600	s/steel polished	379/1293	250	£578	£693.60
STGI-150-045	1508	450	s/steel polished	361/1232	250	£767	£920.40
STGI-150-060	1508	600	s/steel polished	448/1529	300	£880	£1,056.00
STGI-170-045	1724	450	s/steel polished	434/1481	300	£883	£1,059.60
STGI-170-050	1724	500	s/steel polished	477/1628	300	£927	£1,112.40
STGI-170-060	1724	600	s/steel polished	517/1764	300	£1,013	£1,215.60
STGI-060-100-0557	572	1000	matt black	394/1344	250	£545	£654.00
STGI-080-050-0557	788	500	matt black	313/1068	200	£386	£463.20
STGI-080-060-0557	788	600	matt black	363/1239	250	£429	£514.80
STGI-120-045-0557	1220	450	matt black	448/1529	300	£497	£596.40
STGI-120-050-0557	1220	500	matt black	512/1747	300	£524	£628.80
STGI-120-060-0557	1220	600	matt black	554/1890	300	£578	£693.60
STGI-170-050-0557	1724	500	matt black	704/2402	500	£927	£1,112.40
STGI-170-060-0557	1724	600	matt black	791/2699	500	£1,013	£1,215.60
STGI-060-045-CF*	572	450	s/steel painted	219/747	150	£304	£364.80
STGI-060-100-CF*	572	1000	s/steel painted	394/1344	250	£545	£654.00
STGI-080-030-CF*	788	300	s/steel painted	218/744	150	£305	£366.00
STGI-080-045-CF*	788	450	s/steel painted	294/1003	200	£365	£438.00
STGI-080-050-CF*	788	500	s/steel painted	313/1068	200	£386	£463.20
STGI-080-060-CF*	788	600	s/steel painted	363/1239	250	£429	£514.80
STGI-120-030-CF*	1220	300	s/steel painted	332/1133	200	£434	£520.80
STGI-120-045-CF*	1220	450	s/steel painted	448/1529	300	£497	£596.40
STGI-120-050-CF*	1220	500	s/steel painted	512/1747	300	£524	£628.80
STGI-120-060-CF*	1220	600	s/steel painted	554/1890	300	£578	£693.60
STGI-150-045-CF*	1508	450	s/steel painted	556/1897	300	£767	£920.40
STGI-150-060-CF*	1508	600	s/steel painted	687/2344	400	£880	£1,056.00
STGI-170-045-CF*	1724	450	s/steel painted	640/2184	400	£883	£1,059.60
STGI-170-050-CF*	1724	500	s/steel painted	704/2402	500	£927	£1,112.40
STGI-170-060-CF*	1724	600	s/steel painted	791/2699	500	£1,013	£1,215.60

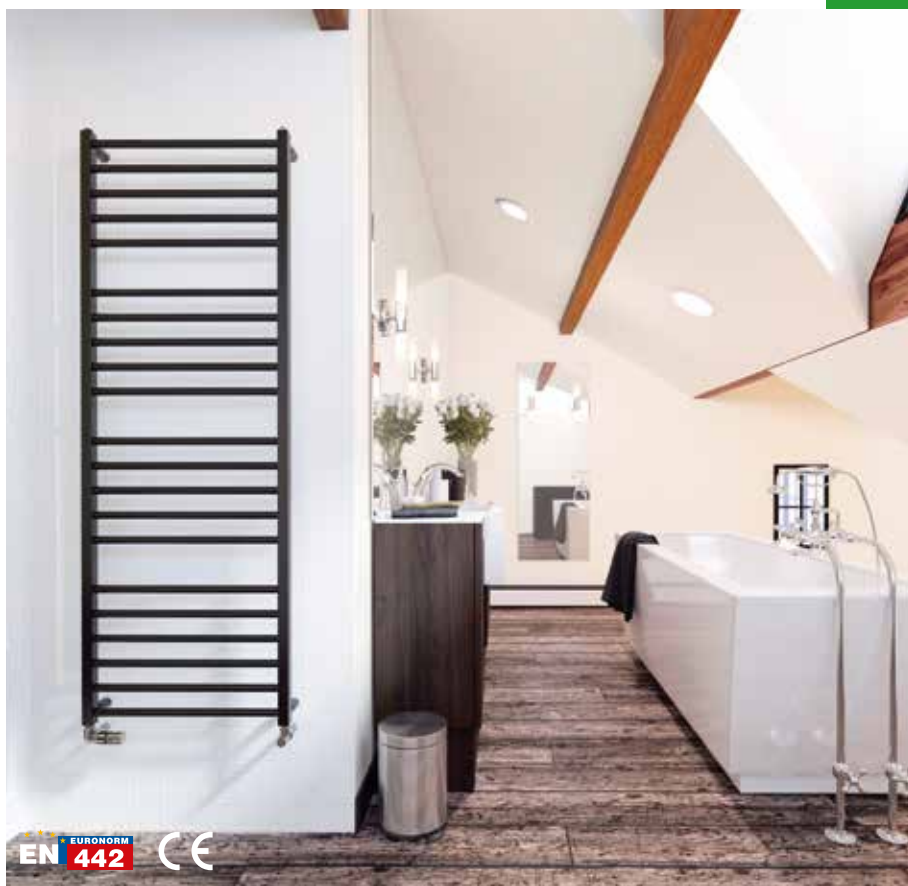
*No price surcharge for colour finishes.

Dual energy: Self fit (additional cost to central heating model prices). For more information please scan the QR code.

Colour finish: Standard colours from the Zehnder colour chart. No charge for colour option. Delivery of colour finish and non-stock products: 4-6 weeks.



The **Stellar Spa** is contemporary in design and its stainless steel finish suits the latest lifestyle trends. Ideal for wetrooms and suitable for dual energy installation for year-round comfort.



STGI-170-060 MATT BLACK 0557



STGI-080-045 STAINLESS STEEL FINISH



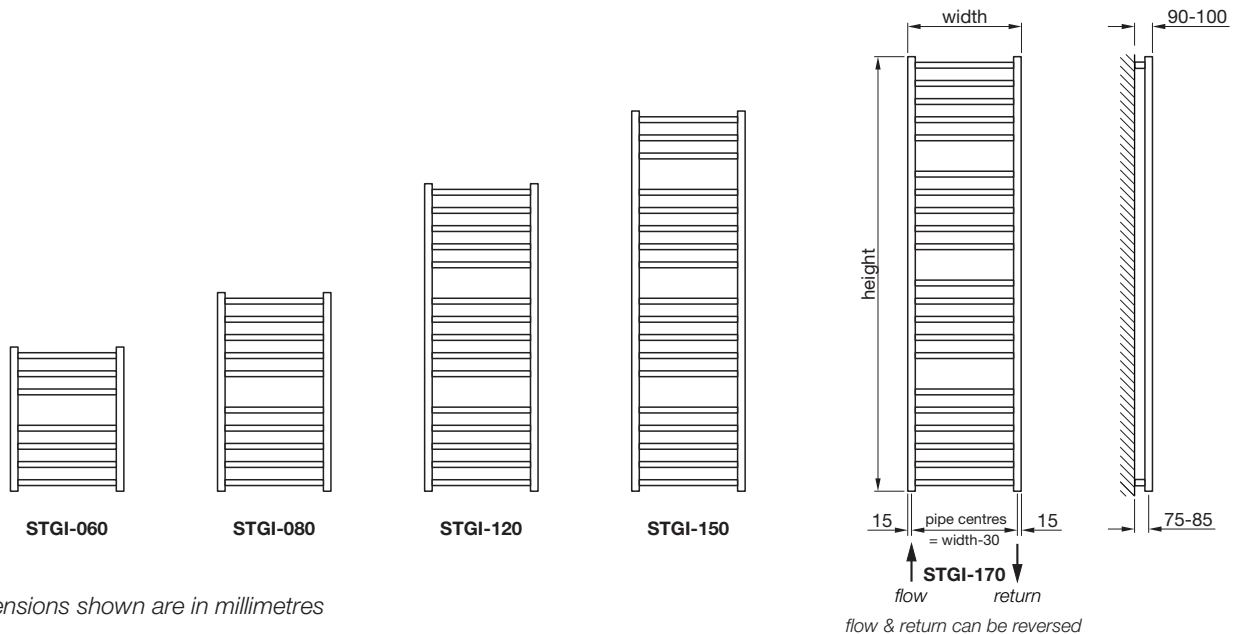
Zehnder recommends VALVE-SET-2-CR. For more information see page 182.



STGI-060-100 STAINLESS STEEL FINISH

The complete compliant technical specifications can be viewed by scanning here.





All dimensions shown are in millimetres

Test pressure: **13 BAR**
 Max working pressure: **10 BAR**
 Max working temperature: **120° C**
 All stainless steel construction: **30mm x 30mm headers
 dia 23mm horizontal tubes**
 Connections: **½ inch BSP underside tapings**

Heat output determined in accordance with EN 442
 Test Laboratory: HLK STUTTGART, Test House No: 0626

* rating for simple immersion/CTEC or CTEW in Watts

Model	Height ± 2mm	Width ± 2mm	Finish	Pipe Centres ± 2mm	Output ΔT=50K		Output ΔT=30K		n	Weight kg	Water Content litres	Max. Immersion Rating*
					Watts	Btu	Watts	Btu				
STGI-060-045	572	450	polished	420	161	549	84	287	1.27	3.0	1.8	100
STGI-060-100	572	1000	polished	970	272	928	144	491	1.24	5.2	3.0	150
STGI-080-030	788	300	polished	270	171	583	89	304	1.28	3.3	2.0	100
STGI-080-045	788	450	polished	420	220	751	115	392	1.27	4.2	3.0	150
STGI-080-050	788	500	polished	470	234	798	122	416	1.26	4.4	2.7	150
STGI-080-060	788	600	polished	570	243	829	128	435	1.26	4.7	3.2	150
STGI-120-030	1220	300	polished	270	240	819	125	427	1.28	5.0	3.1	150
STGI-120-045	1220	450	polished	420	309	1054	161	549	1.28	6.2	3.9	200
STGI-120-050	1220	500	polished	470	353	1204	182	621	1.28	6.6	4.1	250
STGI-120-060	1220	600	polished	570	379	1293	197	672	1.28	7.4	4.6	250
STGI-150-045	1508	450	polished	420	361	1232	187	639	1.28	7.3	4.7	250
STGI-150-060	1508	600	polished	570	448	1529	233	795	1.28	8.7	5.6	300
STGI-170-045	1724	450	polished	420	434	1481	226	771	1.28	8.8	5.3	300
STGI-170-050	1724	500	polished	470	477	1628	247	843	1.27	9.3	5.7	300
STGI-170-060	1724	600	polished	570	517	1764	270	921	1.27	10.2	6.5	300
STGI-060-045	572	450	painted	420	219	747	117	401	1.23	3.0	1.8	150
STGI-060-100	572	1000	painted	970	394	1344	211	721	1.23	5.2	3.0	250
STGI-080-030	788	300	painted	270	218	744	117	399	1.23	3.3	2.0	150
STGI-080-045	788	450	painted	420	294	1003	158	538	1.23	4.2	3.0	200
STGI-080-050	788	500	painted	470	313	1068	166	566	1.23	4.4	2.7	200
STGI-080-060	788	600	painted	570	363	1239	194	661	1.23	4.7	3.2	250
STGI-120-030	1220	300	painted	270	332	1133	177	604	1.23	5.0	3.1	200
STGI-120-045	1220	450	painted	420	448	1529	239	815	1.24	6.2	3.9	300
STGI-120-050	1220	500	painted	470	512	1747	270	921	1.24	6.6	4.1	300
STGI-120-060	1508	600	painted	570	554	1890	294	1003	1.24	7.4	4.6	300
STGI-150-045	1508	450	painted	420	556	1897	297	1012	1.24	7.3	4.7	300
STGI-150-060	1508	600	painted	570	687	2344	367	1251	1.24	8.7	5.6	400
STGI-170-045	1724	450	painted	420	640	2184	343	1171	1.23	8.8	5.3	400
STGI-170-050	1724	500	painted	470	704	2402	373	1273	1.23	9.3	5.7	500
STGI-170-060	1724	600	painted	570	791	2699	422	1440	1.23	10.2	6.5	500

Issue 1.0



Tools & Material Required

Suitable valves
PTFE tape
Silicone thread sealant
Tape measure
Allen key - 13mm & 12mm (when installing Zehnder valves)
Spanner - 13mm & 14mm
Screwdriver - crosshead & flathead
Pliers
Electric drill
Masonry drill bit
Spirit level
Stepladder (for taller radiators)

Key	Component	Qty
A	Air Vent - 1/2"	1
B	Blanking Plug	1
C	Boss	4
D	Wall Plug	4
E	Bracket	4
F	Screw, 6mm dia x 50mm	4
G	Washer	4
H	Grub Screw	4
I	Allen Key	1

Assembly Instructions

Sufficient PTFE tape must be applied to valve-tail threads prior to their installation.
Silicone thread sealant should be applied to all threaded components manufactured with 'O-rings'.

- Fit valve tails, using correct size Allen key.
 - Fit air vent (A), blanking plug (B).
 - Screw bosses (C) to studs on the back of the radiator.
 - Accurately mark out bracket holes on wall using spirit level.
 - Drill four holes to a minimum depth of 65mm & insert wall plugs (D).
 - Attach brackets (E) to wall with screws (F) & washers (G).
 - Hang radiator onto wall by inserting bosses (C) into brackets (E).
 - Tighten grub screws (H) with Allen key (I).
 - Plumb radiator to heating circuit with flow opposite air vent.
 - Air vent is recessed so flathead screwdriver must be used to vent radiator.
- This radiator should be installed onto a central heating system that has been cleaned/flushed and contains water treatment and inhibitors in accordance with BS7593.

