



**NEXT LEVEL**  
APPAREL™

WHAT'S NOW. WHAT'S NEXT.

**2021 CATALOG**



**MEN'S • WOMEN'S • UNISEX • YOUTH**



# OUR NLA DNA

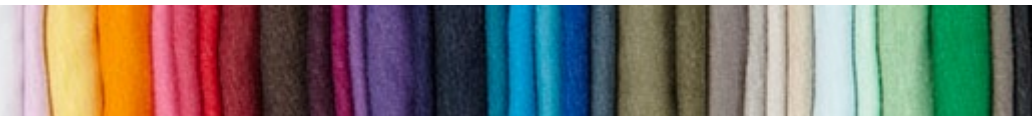
At Next Level Apparel, we are passionate about our customers. Who they are, what they need, and how we can contribute to their success story.

We know that a t-shirt is more than a piece of clothing - it's a way of connecting to your communities. It's their business. Our comfort. Your style.

We're committed to making tees that anyone and everyone can be proud of. We want to make apparel that distributors are excited to carry, decorators can print on consistently, and customers from around the globe feel good wearing.

Our team is fueled by a purpose-driven mindful lifestyle. It's critical that our processes are the most ethical and eco-friendly so that feeling good also means wearing good.

From our local roots in Southern California to our international consumer base, we are dedicated to creating an experience that advances our customers' mission and thrives in what's **NOW** and what's **NEXT**.



# TABLE OF CONTENTS

<b>NLA DNA</b>	2	<b>3600A:</b> Unisex USA Cotton Crew	59	<b>9302:</b> Unisex PCH Fleece Pullover Hoody <b>new</b>	112
<b>Table of Contents</b>	3-4	<b>ECO INTRO</b>	60	<b>9002:</b> Unisex PCH Pullover Crew <b>new</b>	112
<b>2021 New Styles</b>	5	<b>4600:</b> Unisex Eco Heavyweight Tee	61	<b>9700:</b> Unisex PCH Bomber Jacket	113
<b>Style Index</b>	6-7	<b>4210:</b> Unisex Eco Performance Tee	62	<b>INDEX</b>	114
<b>Brand Pillars</b>	8	<b>4212:</b> Youth Eco Performance Crew	63	<b>SIZE CHART</b>	115
<b>Wholesale Partner Network</b>	9	<b>4240:</b> Women's Eco Performance V	63		
<b>Social &amp; Eco Ethos</b>	10	<b>FESTIVAL INTRO</b>	64		
<b>Sustainable Commitment</b>	11	<b>6200:</b> Unisex Poly/Cotton Crew	65		
<b>Brand Timeline</b>	12-13	<b>5030:</b> Women's Festival Scoop	66		
<b>100% COTTON INTRO</b>	14	<b>5040:</b> Women's Festival Sleeveless V	66		
<b>3600:</b> Unisex Cotton Crew	15	<b>5033:</b> Women's Festival Tank	67		
<b>3900:</b> Women's Boyfriend Tee	16	<b>5013:</b> Women's Festival Muscle Tank	67		
<b>3601:</b> Men's Cotton L/S Crew	17	<b>5080:</b> Women's Festival Cali Crop	67		
<b>3633:</b> Unisex Cotton Tank	18	<b>IDEAL INTRO</b>	68		
<b>3602:</b> Unisex Cotton Long Body Crew	19	<b>1800:</b> Unisex Ideal Heavyweight Crew	69		
<b>3605:</b> Unisex Cotton Pocket Crew	19	<b>1801:</b> Unisex Ideal Heavyweight L/S Crew <b>new</b>	69		
<b>3200:</b> Unisex Cotton V	20	<b>1533:</b> Women's Ideal Racerback Tank	70		
<b>3940:</b> Women's Relaxed V	21	<b>1540:</b> Women's Ideal V	71		
<b>3650:</b> Unisex Cotton Raglan Tee	22-23	<b>1510:</b> Women's Ideal Tee	72		
<b>3604:</b> Unisex Cotton Ringer Tee	24-25	<b>1560:</b> Women's Ideal Dolman	73		
<b>3904:</b> Women's Cotton Ringer Tee	24-25	<b>1530:</b> Women's Ideal Flow Tee	74		
<b>3710:</b> Girl's Princess Tee	26	<b>1534:</b> Ideal Color Block Racerback Tank	75		
<b>3310:</b> Youth Cotton Crew	27	<b>1580:</b> Women's Ideal Crop Tee <b>new</b>	76		
<b>3110:</b> Toddler Cotton Tee	27	<b>7481S:</b> Women's Cropped L/S Tee	77		
<b>CVC INTRO</b>	28	<b>6933:</b> French Terry Racerback Tank	78		
<b>6210:</b> Unisex CVC Crew	29	<b>6951:</b> Women's French Terry 3/4 Raglan	79		
<b>6610:</b> Women's CVC Tee	30	<b>6360:</b> Women's Roll Sleeve Dolman	80		
<b>6233:</b> Unisex CVC Tank	31	<b>6333:</b> Unisex Muscle Tank	81		
<b>6240:</b> Men's CVC V	32	<b>6338:</b> Women's Gathered Racerback Tank	82		
<b>6640:</b> Women's CVC Deep V	33	<b>3533:</b> Women's Spandex Jersey Tank	83		
<b>6251:</b> Unisex CVC 3/4 Sleeve Raglan	34	<b>6633:</b> Women's Spandex Jersey Racerback Tank	83		
<b>3352:</b> Youth CVC 3/4 Raglan	35	<b>MOCK TWIST INTRO</b>	84		
<b>3712:</b> Girl's Princess CVC Tee	36	<b>2050:</b> Men's Mock Twist Raglan Crew	85		
<b>3312:</b> Youth CVC Crew	37	<b>2021:</b> Unisex Mock Twist Raglan Hoody	86		
<b>TRI-BLEND INTRO</b>	38	<b>2022:</b> Unisex Mock Twist S/S Hoody	87		
<b>6010:</b> Unisex Tri-Blend Crew	39	<b>INSPIRED DYE INTRO</b>	88		
<b>6710:</b> Women's Tri-Blend Tee	40	<b>7433:</b> Unisex Inspired Dye Tank	89		
<b>6310:</b> Youth Tri-Blend Crew	41	<b>7415:</b> Unisex Inspired Dye Pocket Crew	89		
<b>6040:</b> Men's Tri-Blend V	42	<b>7451:</b> Inspired Dye L/S Pocket Crew	90		
<b>6740:</b> Women's Tri-Blend Deep V	43	<b>7410:</b> Unisex Inspired Dye Crew	90		
<b>6733:</b> Women's Tri-Blend Racerback Tank	44	<b>7401:</b> Unisex Inspired Dye L/S Crew	91		
<b>6734:</b> Women's Tri-Blend Racerback Tank Dress	45	<b>7410S:</b> Unisex Power Crew	91		
<b>6731:</b> Women's Tri-Blend L/S Scoop	46	<b>WAFFLE THERMAL INTRO</b>	92		
<b>6071:</b> Unisex Tri-Blend L/S Crew	47	<b>8201:</b> Unisex Thermal L/S Crew	93		
<b>6760:</b> Women's Tri-Blend Dolman	48	<b>8221:</b> Unisex Thermal Hoody	93		
<b>6730:</b> Women's Tri-Blend Scoop	49	<b>BEACH FLEECE INTRO</b>	94-95		
<b>6021:</b> Unisex Tri-Blend L/S Hoody	50	<b>9000:</b> Unisex French Terry L/S Crew	96		
<b>6072:</b> Men's Tri-Blend L/S Henley	50	<b>9601:</b> Unisex French Terry Zip Hoody	97		
<b>6051:</b> Unisex Tri-Blend 3/4 Raglan	51	<b>9301:</b> Unisex French Terry Pullover Hoody	98-99		
<b>SUEDED INTRO</b>	52	<b>9600:</b> Unisex Denim Fleece Zip Hoody	100		
<b>6410:</b> Unisex Sueded Crew	53	<b>9800:</b> Men's Denim Fleece Jogger	101		
<b>6407:</b> Unisex Sueded Snow Crew	54	<b>80/20 FLEECE INTRO</b>	102-103		
<b>6440:</b> Unisex Sueded V	55	<b>9303:</b> 80/20 Fleece Pullover Hoody	104		
<b>6480:</b> Women's Sueded V	55	<b>9001:</b> Unisex 80/20 Fleece Pocket Crew	105		
<b>6491:</b> Unisex Sueded Zip Hoody	56	<b>9602:</b> Unisex 80/20 Fleece Zip Hoody	106		
<b>6411:</b> Unisex Sueded L/S Crew	57	<b>9103:</b> Youth 80/20 Fleece Zip Hoody	107		
<b>MADE IN THE USA INTRO</b>	58	<b>PCH FLEECE INTRO</b>	108-109		
<b>6010A:</b> Unisex USA Tri-Blend Crew	59	<b>9300:</b> Unisex PCH Pullover Hoody	110		
<b>3900A:</b> Women's USA Boyfriend Tee	59	<b>9603:</b> Women's PCH Raglan Zip Hoody	111		

# TABLE OF CONTENTS BY FABRIC

<b>100% COTTON</b>	14	<b>6200:</b> Unisex Poly/Cotton Crew	65
<b>3600:</b> Unisex Cotton Crew	15	<b>5030:</b> Women's Festival Scoop	66
<b>3900:</b> Women's Boyfriend Tee	16	<b>5040:</b> Women's Festival Sleeveless V	66
<b>3601:</b> Men's Cotton L/S Crew	17	<b>5033:</b> Women's Festival Tank	67
<b>3633:</b> Unisex Cotton Tank	18	<b>5013:</b> Women's Festival Muscle Tank	67
<b>3602:</b> Unisex Cotton Long Body Crew	19	<b>5080:</b> Women's Festival Cali Crop	67
<b>3605:</b> Unisex Cotton Pocket Crew	19	<b>IDEAL</b>	<b>68</b>
<b>3200:</b> Unisex Cotton V	20	<b>1800:</b> Unisex Ideal Heavyweight Crew	69
<b>3940:</b> Women's Relaxed V	21	<b>1801:</b> Unisex Ideal Heavyweight L/S Crew <b>NEW</b>	69
<b>3650:</b> Unisex Cotton Raglan Tee	22-23	<b>1533:</b> Women's Ideal Racerback Tank	70
<b>3604:</b> Unisex Cotton Ringer Tee	24-25	<b>1540:</b> Women's Ideal V	71
<b>3904:</b> Women's Cotton Ringer Tee	24-25	<b>1510:</b> Women's Ideal Tee	72
<b>3710:</b> Girl's Princess Tee	26	<b>1560:</b> Women's Ideal Dolman	73
<b>3310:</b> Youth Cotton Crew	27	<b>1530:</b> Women's Ideal Flow Tee	74
<b>3110:</b> Toddler Cotton Tee	27	<b>1534:</b> Ideal Color Block Racerback Tank	75
<b>CVC</b>	<b>28</b>	<b>1580:</b> Women's Ideal Crop Tee <b>NEW</b>	76
<b>6210:</b> Unisex CVC Crew	29	<b>LIGHTWEIGHT FRENCH TERRY</b>	<b>78</b>
<b>6610:</b> Women's CVC Tee	30	<b>6933:</b> French Terry Racerback Tank	78
<b>6233:</b> Unisex CVC Tank	31	<b>6951:</b> Women's French Terry 3/4 Raglan	79
<b>6240:</b> Men's CVC V	32	<b>LIGHTWEIGHT COTTON/POLY</b>	<b>80</b>
<b>6640:</b> Women's CVC Deep V	33	<b>6360:</b> Women's Roll Sleeve Dolman	80
<b>6251:</b> Unisex CVC 3/4 Sleeve Raglan	34	<b>6338:</b> Women's Gathered Racerback Tank	82
<b>3352:</b> Youth CVC 3/4 Raglan	35	<b>6333:</b> Unisex Muscle Tank	81
<b>3712:</b> Girl's Princess CVC Tee	36	<b>SPANDEX</b>	<b>83</b>
<b>3312:</b> Youth CVC Crew	37	<b>3533:</b> Women's Spandex Jersey Tank	83
<b>TRI-BLEND</b>	<b>38</b>	<b>6633:</b> Women's Spandex Jersey Racerback Tank	83
<b>6010:</b> Unisex Tri-Blend Crew	39	<b>MOCK TWIST</b>	<b>84</b>
<b>6710:</b> Women's Tri-Blend Tee	40	<b>2050:</b> Men's Mock Twist Raglan Crew	85
<b>6310:</b> Youth Tri-Blend Crew	41	<b>2021:</b> Unisex Mock Twist Raglan Hoody	86
<b>6040:</b> Men's Tri-Blend V	42	<b>2022:</b> Unisex Mock Twist S/S Hoody	87
<b>6740:</b> Women's Tri-Blend Deep V	43	<b>INSPIRED DYE</b>	<b>88</b>
<b>6733:</b> Women's Tri-Blend Racerback Tank	44	<b>7433:</b> Unisex Inspired Dye Tank	89
<b>6734:</b> Women's Tri-Blend Racerback Tank Dress	45	<b>7415:</b> Unisex Inspired Dye Pocket Crew	89
<b>6731:</b> Women's Tri-Blend L/S Scoop	46	<b>7451:</b> Inspired Dye L/S Pocket Crew	90
<b>6071:</b> Unisex Tri-Blend L/S Crew	47	<b>7410:</b> Unisex Inspired Dye Crew	90
<b>6760:</b> Women's Tri-Blend Dolman	48	<b>7401:</b> Unisex Inspired Dye L/S Crew	91
<b>6730:</b> Women's Tri-Blend Scoop	49	<b>7410S:</b> Unisex Power Crew	91
<b>6021:</b> Unisex Tri-Blend L/S Hoody	50	<b>WAFFLE THERMAL</b>	<b>92</b>
<b>6072:</b> Men's Tri-Blend L/S Henley	50	<b>8201:</b> Unisex Thermal L/S Crew	93
<b>6051:</b> Unisex Tri-Blend 3/4 Raglan	51	<b>8221:</b> Unisex Thermal Hoody	93
<b>SUEDED</b>	<b>52</b>	<b>BEACH FLEECE</b>	<b>94-95</b>
<b>6410:</b> Unisex Sueded Crew	53	<b>9000:</b> Unisex French Terry L/S Crew	96
<b>6407:</b> Unisex Sueded Snow Crew	54	<b>9601:</b> Unisex French Terry Zip Hoody	97
<b>6440:</b> Unisex Sueded V	55	<b>9301:</b> Unisex French Terry Pullover Hoody	98-99
<b>6480:</b> Women's Sueded V	55	<b>9600:</b> Unisex Denim Fleece Zip Hoody	100
<b>6491:</b> Unisex Sueded Zip Hoody	56	<b>9800:</b> Men's Denim Fleece Jogger	101
<b>6411:</b> Unisex Sueded L/S Crew	57	<b>80/20 FLEECE</b>	<b>102-103</b>
<b>MADE IN THE USA</b>	<b>58</b>	<b>9303:</b> 80/20 Fleece Pullover Hoody	104
<b>6010A:</b> Unisex USA Tri-Blend Crew	59	<b>9001:</b> Unisex 80/20 Fleece Pocket Crew	105
<b>3900A:</b> Women's USA Boyfriend Tee	59	<b>9602:</b> Unisex 80/20 Fleece Zip Hoody	106
<b>3600A:</b> Unisex USA Cotton Crew	59	<b>9103:</b> Youth 80/20 Fleece Zip Hoody	107
<b>ECO</b>	<b>60</b>	<b>PCH FLEECE</b>	<b>108-109</b>
<b>4600:</b> Unisex Eco Heavyweight Tee	61	<b>9300:</b> Unisex PCH Pullover Hoody	110
<b>4210:</b> Unisex Eco Performance Tee	62	<b>9603:</b> Women's PCH Raglan Zip Hoody	111
<b>4212:</b> Youth Eco Performance Crew	63	<b>9302:</b> Unisex PCH Fleece Pullover Hoody <b>NEW</b>	112
<b>4240:</b> Women's Eco Performance V	63	<b>9002:</b> Unisex PCH Pullover Crew <b>NEW</b>	112
<b>FESTIVAL</b>	<b>64</b>	<b>9700:</b> Unisex PCH Bomber Jacket	113

## NEW 2021 STYLES



# STYLE INDEX

## WOMEN



**3900**  
Women's Boyfriend Tee  
pg.16



**3900A**  
Women's USA Boyfriend Tee  
pg.59



**3904**  
Women's Cotton Ringer Tee  
pg.24-25



**3940**  
Women's Relaxed V  
pg.21



**6610**  
Women's CVC Tee  
pg.30



**6640**  
Women's CVC Deep V  
pg.33



**6480**  
Women's Sueded V  
pg.55



**74815**  
Women's Cropped L/S Tee  
pg.77



**6710**  
Women's Tri-Blend Tee  
pg.40



**6740**  
Women's Tri-Blend Deep V  
pg.43



**6730**  
Women's Tri-Blend Scoop  
pg.49



**6760**  
Women's Tri-Blend Dolman  
pg.48



**6721**  
Women's Tri-Blend L/S Scoop  
pg.46



**6733**  
Women's Tri-Blend Racerback Tank  
pg.44



**6734**  
Tri-Blend Racerback Tank Dress  
pg.45



**5033**  
Women's Festival Tank  
pg.67



**5013**  
Women's Festival Muscle Tank  
pg.67



**5040**  
Women's Festival Sleeveless V  
pg.66



**5030**  
Women's Festival Scoop  
pg.66



**5080**  
Women's Festival Call Crop  
pg.67



**3533**  
Women's Spandex Jersey Tank  
pg.83



**6633**  
Women's Spandex Racerback Tank  
pg.83



**1510**  
Women's Ideal Tee  
pg.72



**1540**  
Women's Ideal V  
pg.71



**1533**  
Women's Ideal Racerback Tank  
pg.70



**1524**  
Women's Ideal Color Block Racerback Tank  
pg.75



**1530**  
Women's Ideal Flow Tee  
pg.74



**1560**  
Women's Ideal Dolman  
pg.73



**1580**  
Women's Ideal Crop Top  
pg.76



**8360**  
Women's Roll Sleeve Dolman  
pg.80



**6338**  
Women's Gathered Racerback Tank  
pg.82



**4240**  
Women's Eco Performance V  
pg.63



**6951**  
Women's French Terry 3/4 Raglan  
pg.79



**6933**  
Women's French Terry Racerback Tank  
pg.78



**9603**  
Women's PCH Raglan Zip Hoody  
pg.111

## YOUTH



**3110**  
Toddler Cotton Tee  
pg.27



**3710**  
Girl's Princess Tee  
pg.26



**3712**  
Girl's Princess CVC Tee  
pg.36



**3310**  
Youth Cotton Crew  
pg.27



**3312**  
Youth CVC Crew  
pg.37



**6310**  
Youth Tri-Blend Crew  
pg.41



**3352**  
Youth CVC 3/4 Raglan  
pg.35



**9103**  
80/20 Fleece Youth Zip Hoody  
pg.107



**4212**  
Youth Eco Performance Crew  
pg.63

## MEN



**3601**  
Men's Cotton L/S Crew  
pg.17



**6240**  
Men's CVC V  
pg.32



**6040**  
Men's Tri-Blend V  
pg.42



**6072**  
Men's Tri-Blend L/S Henley  
pg.50



**2050**  
Men's Mock Twist Raglan Crew  
pg.85



**9800**  
Men's Denim Fleece Jogger  
pg.101

# STYLE INDEX

UNISEX



**3600**  
Unisex Cotton Crew  
pg.15



**3600A**  
Unisex USA Cotton Crew  
pg.59



**3605**  
Unisex Cotton Pocket Crew  
pg.19



**3604**  
Unisex Cotton Ringer Tee  
pg.24-25



**3650**  
Unisex Cotton Raglan Tee  
pg.22-23



**3200**  
Unisex Cotton V  
pg.20



**3633**  
Unisex Cotton Tank  
pg.18



**3602**  
Unisex Cotton Long Body Crew  
pg.19



**6407**  
Unisex Sueded Snow S/S Crew  
pg.54



**6251**  
Unisex CVC 3/4 Sleeve Raglan  
pg.34



**6210**  
Unisex CVC Crew  
pg.29



**6233**  
Unisex CVC Tank  
pg.31



**6410**  
Unisex Sueded Crew  
pg.53



**6440**  
Unisex Sueded V  
pg.55



**6411**  
Unisex Sueded L/S Crew  
pg.57



**6010**  
Unisex Tri-Blend Crew  
pg.39



**6010A**  
Unisex USA Tri-Blend Crew  
pg.59



**6071**  
Unisex Tri-Blend L/S  
pg.47



**6051**  
Unisex Tri-Blend 3/4 Raglan  
pg.51



**6021**  
Unisex Tri-Blend L/S Hoody  
pg.50



**6200**  
Unisex Poly/Cotton Crew  
pg.65



**4600**  
Unisex Eco Heavyweight Tee  
pg.61



**4210**  
Unisex Eco Performance Tee  
pg.62



**6333**  
Unisex Muscle Tank  
pg.81



**2022**  
Unisex Mock Twist Short Sleeve Hoody  
pg.87



**2021**  
Unisex Mock Twist Raglan Hoody  
pg.86



**8221**  
Unisex Thermal Hoody  
pg.93



**8201**  
Unisex Thermal L/S Crew  
pg.93



**7410S**  
Unisex Power Crew  
pg.91



**1800**  
Unisex Ideal Heavyweight Crew  
pg.69



**NEW 1801**  
Unisex Ideal Heavyweight L/S Crew  
pg.69



**7410**  
Unisex Inspired Dye Crew  
pg.90



**7415**  
Unisex Inspired Dye Pocket Crew  
pg.89



**7401**  
Unisex Inspired Dye L/S Crew  
pg.91



**7451**  
Unisex Inspired Dye L/S Pocket Crew  
pg.90



**7433**  
Unisex Inspired Dye Tank  
pg.89



**6491**  
Unisex French Sueded Zip Hoody  
pg.56



**9000**  
Unisex French Terry L/S Crew  
pg.96



**9301**  
Unisex French Terry Pullover Hoody  
pg.98-99



**9601**  
Unisex French Terry Zip Hoody  
pg.97



**9001**  
Unisex 80/20 Fleece Crew with Pocket  
pg.105



**9303**  
Unisex 80/20 Fleece Pullover Hoody  
pg.104



**9602**  
Unisex 80/20 Fleece Zip Hoody  
pg.106



**NEW 9002**  
Unisex PCH Basic Pullover Hoody  
pg.112



**9300**  
Unisex PCH Pullover Hoody  
pg.110



**NEW 9302**  
Unisex PCH Classic Pullover Hoody  
pg.112



**9700**  
Unisex PCH Bomber Jacket  
pg.113



**9600**  
Unisex Denim Fleece Zip Hoody  
pg.100

## OBSESSED WITH QUALITY

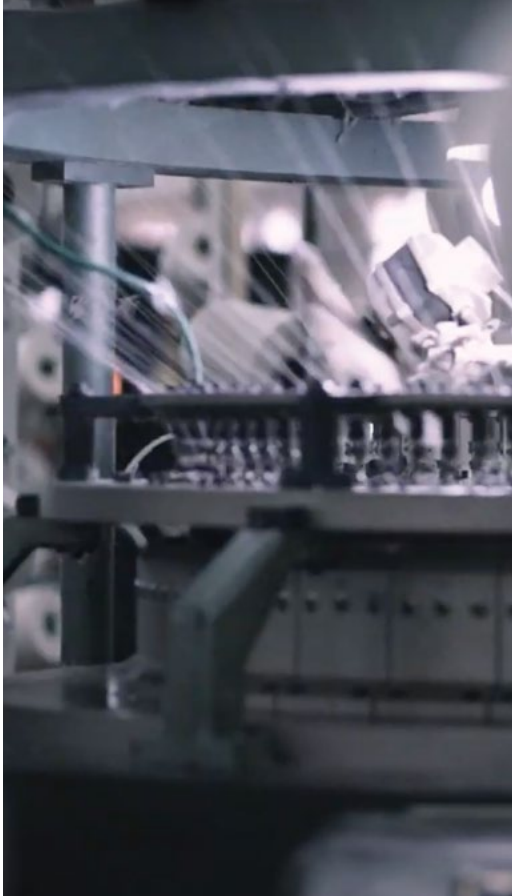
We're on a quest to make the best t-shirts we possibly can. We are committed to ensuring quality in every fabric we use, every cut we design, and every t-shirt we produce. We've taken care of all the details, so you don't have to.

## SUSTAINABILITY

We embrace the protection of our beautiful planet and are relentless in finding the best options in every area of our business. Whether through recycling, paperless offices or the use of organic and recycled materials in many of our products, we are committed to reducing our carbon footprint.

## PASSIONATE ABOUT CUSTOMERS

We're motivated by making our customers lives better and effortless. We're genuinely interested in hearing about our customers' needs and improving our products and processes accordingly. When our customers win, we win.



## COMMITTED TO OUR COMMUNITIES

The communities where we work are our homes. Our neighbors, family and friends live, work and play here. Whether Gardena, CA or our manufacturing facilities around the world, we want to have a positive impact on the lives of our people and our communities.

## DIVERSITY

A diverse workforce enhances creativity, productivity and happiness in the workplace. We hire the best and the brightest, resulting in a diverse team across gender, culture, ethnicity, religion and ideology. This commitment has always made NLA a stronger, better, smarter organization.



## OUR SOCIAL & ECO ETHOS

We strive to create a culture of continuous improvement for sustainable & safe manufacturing, while minimizing our environmental footprint, empowering and caring for our workforce and contributing positively to our global communities. Our journey creates a better world and is foundational to our ethos.

Don't just live in our t-shirts, make a difference.



# OUR COMMITMENT TO THE ENVIRONMENT & OUR WORKERS

Next Level Apparel was voted in by the Fair Labor Association (FLA) as an approved Participating Company in October 2019. It is a badge that recognizes the commitment and diligence that has been put into our social responsibility and social compliance program, as well as the focus on continuous improvement as we move forward.

We have made it our mission to collaborate with the FLA and fellow affiliates to improve workers lives worldwide.

Next Level Apparel used the UN Sustainable Development Goals (SDG's) as a blueprint to help guide us down this path of creating a better world, and we believe we can make a significant impact in the following areas:

Responsible Consumption and Production  
Quality Education  
Social and Community Outreach Programs

Our mission is to create quality apparel while also recognizing that we have an opportunity to make a positive impact on our people and our planet.



# A LEGACY OF PRODUCT INNOVATION

**6200**

Created as a premium poly/cotton t-shirt that can be sublimated

**2003**

**6210**

Introduced the first cvc shirt in wholesale

Launch of

**Ideal  
Collection**

**2015**

Launch of

**Inspired  
Dye**

**2017**

**2009**

**6410**

Introduced the original sueded tee into wholesale

Launch of

**Fleece  
Collection**

**2018**

**3600**

launched our flagship 100% combed ring-spun cotton t-shirt

Launch of

**USA Made  
Collection**



Became  
**FLA**  
affiliated brand

COVID-19 pivot to  
**Face Mask &  
Neck Gaiter**  
manufacturing to  
wholesale market

Appointed as an  
Official  
**City of Hope  
Philanthropic  
Partner**

**2019**

**2020**

Launch of  
**Eco  
Collection**

Launch of  
**Festival  
Collection**

**Pivot to PPE**  
Initiated members of  
the US government  
consortium creating  
FDA approved  
and HHS certified  
surgical masks to the  
National Government  
Stockpile

Launch of the  
**1800 Ideal  
Heavyweight  
Crew**

# 100% COMBED RING-SPUN COTTON



3600 & 3900

## THE PERFECT PRINTING STAPLE.

STRETCH AND SOFTNESS.  
COMFORTABLE AND LIGHTWEIGHT.  
PRINTERS PREFERRED FABRIC FOR DISCHARGE,  
DTG PRINTING, HEAT-TRANSFER AND SCREEN-PRINTING.



### 3600 | UNISEX COTTON CREW

Fine Jersey. 32 single 145g/4.3oz 100% Combed Ring-Spun Cotton (Heather Gray 90% Cotton/10% Poly). Our best-selling ring-spun tee. The perfect printing staple. Set-in Collar 1x1 Baby Rib. Side Seamed. Tear Away Label.

XS-3XL; Select colors 4XL





### 3900 | WOMEN'S BOYFRIEND TEE

Fine Jersey. 32 single 145g/4.3oz 100% Combed Ring-Spun Cotton (Heather Gray 90% Cotton/10% Poly.) Her version of his shirt. Top selling ring-spun tee in a wide variety of colors. Side seamed. Set-in Collar 1x1 Baby Rib. Tear Away Label.

XS-3XL





### 3601 | MEN'S COTTON L/S CREW

Fine Jersey. 32 single 145g/4.3oz 100% Combed Ring-Spun Cotton (Heather Gray 90% Cotton/10% Poly). Top selling ring-spun fabric, a perfect printing staple. Hemmed sleeves. 1x1 baby-rib set-in collar. Side seamed. Tear away label.

S-2XL





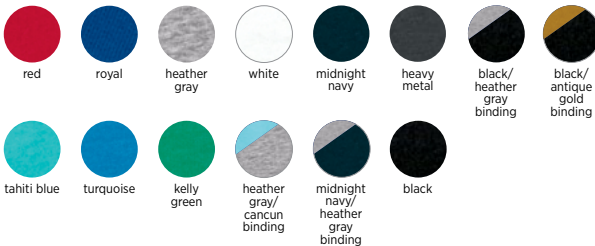


### 3633 | UNISEX COTTON TANK

Fine Jersey. 32 single 145g/4.3oz 100% Combed Ring-Spun Cotton (Heather Gray 90% Cotton/10% Poly). Top selling ring-spun fabric. Self-fabric binding, contrasting where noted. Side seamed. Tear Away Label.

XS-2XL

#### Colors: Body/Binding





**3602 | UNISEX COTTON  
LONG BODY CREW**

Fine Jersey. 32 single 145g/4.3oz 100% Combed Ring-Spun Cotton (Heather Gray 90% Cotton/10% Poly). Top selling ring-spun fabric. 1x1 baby-rib set-in collar. Curved bottom hem. Side seamed. Tear away label.

XS-3XL



black heather gray white midnight navy



**3605 | UNISEX COTTON POCKET  
CREW**

Fine Jersey. 32 single 145g/4.3oz 100% Combed Ring-Spun Cotton (Heather Gray 90% Cotton/10% Poly). Top selling ring-spun fabric, a perfect printing staple. Hemmed sleeves. 1x1 baby-rib set-in collar. Side seamed. Tear away label.

XS-3XL



natural red cool blue midnight navy heavy metal black  
white heather gray maroon military green forest green



### 3200 | UNISEX COTTON V

Fine Jersey. 32 single 145g/4.3oz 100% Combed Ring-Spun Cotton (Heather Gray 90% Cotton/10% Poly). Top selling ring-spun fabric, a perfect printing staple. Side seamed. Set-in collar 1x1 baby rib. Tear away label.

XS-2XL



banana cream



light blue



tahiti blue



sand



cardinal



midnight navy



indigo



heavy metal



red



royal



kelly green



heather gray



black



white



## 3940 | WOMEN'S RELAXED V

Fine Jersey. 100% Combed Ring-Spun Cotton. 32 single, 145g/4.3oz. (Heather Gray 90% Cotton/10% Poly)  
Top selling ring-spun fabric, a perfect printing staple. Set-in collar 1x1 baby rib. Relaxed fit. Side seamed. Tear away label.

XS-3XL



red



royal



midnight  
navy



heavy metal



heather gray



black



desert  
pink



white



### **3650 | UNISEX COTTON RAGLAN TEE**

Fine Jersey. 32 single 145g/4.3oz 100% Combed Ring-Spun Cotton (Heather Gray 90% Cotton/10% Poly). Contrast raglan sleeves and bound neck. Side seamed. Tear Away Label.

XS-3XL

Colors: sleeve/body



maroon/natural



forest green/natural



midnight navy/  
natural



black/natural



black/white



black/black



natural/black



warm gray/black



antique gold/black



black/heather gray



royal/heather gray



natural/red



## 3604 | UNISEX COTTON RINGER TEE

Fine Jersey. 32 single 145g/4.3oz 100% Combed Ring-Spun Cotton (Heather Gray 90% Cotton/10% Poly). Contrast 1x1 baby rib, bound collar and sleeves. Side seamed. Tear away label.

XS-3XL

Colors: Body/Sleeve



natural/black



natural/maroon



natural/forest green



natural/midnight navy



white/black



heather gray/black



black/natural

## 3904 | WOMEN'S COTTON RINGER TEE

Fine Jersey. 32 single 145g/4.3oz 100% Combed Ring-Spun Cotton. Contrast 1x1 baby rib, bound collar and sleeves. Side seamed. Tear away label.

S-2XL

Colors: Body/Sleeve



natural/  
midnight navy

white/  
black

natural/  
maroon





### 3710 | GIRL'S PRINCESS TEE

Fine Jersey. 32 single 145g/4.3oz 100% Combed Ring-Spun Cotton (Heather Gray 90% Cotton/10% Poly). Top selling ring-spun fabric in a variety of colors. Side seamed and tailored for girls sized 3/4 through 14/16. Set-in collar with front cover stitch 1x1 baby rib. Tear away label.

XS(3/4)-XL(14/16)



cancun



light pink



vibrant yellow



turquoise



raspberry



red



white



black



tahiti blue



lilac



hot pink



midnight navy



heather gray



purple rush

### 3310 | YOUTH COTTON CREW

Fine Jersey. 32 single 145g/4.3 oz 100% Combed Ring-Spun Cotton (Heather Gray 90% Cotton/10% Poly). Top selling ring-spun fabric in a variety of colors. Side seamed. Set-in collar 1x1 baby rib. Tear away label.

XS(4/5)-XL(14/16)



### 3110 | TODDLER COTTON TEE

Fine Jersey. 32 single 145g/4.3oz 100% Combed Ring-Spun Cotton (Heather Gray 90% Cotton/10% Poly). Set in collar 1x1 baby rib. Hemmed sleeves. Side seamed. Tear Away Label.

2T, 3T, 4T



# THE ORIGINAL CVC



6210

## THE CREATORS OF THE INDUSTRY FAVORITE CVC.

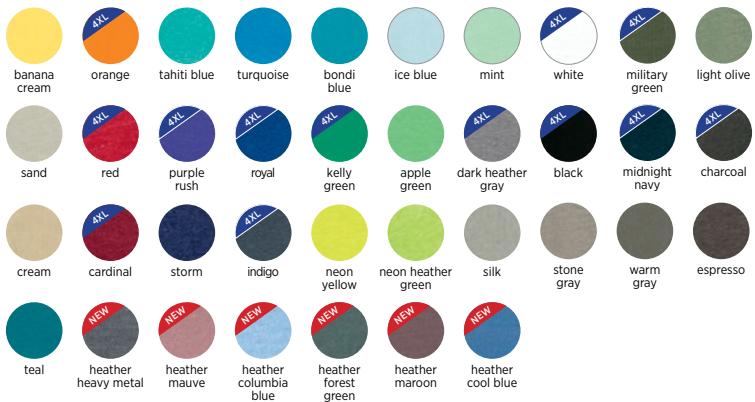
THE CONSISTENT AND DURABLE BLEND OF HEATHERED COTTON/POLY.  
PRINTERS PREFERRED FABRIC FOR SCREEN-PRINTING  
AND HEAT-TRANSFER.



## 6210 | UNISEX CVC CREW

CVC Jersey. 32 single 145g/4.3oz 60% Combed Ring-Spun Cotton 40% Poly. Top of the line fabric that stands up to consistent wear without sacrificing fit or feel. Perfect for all your favorite heathered colors plus solid white and black. Set-in Collar 1x1 CVC Baby Rib. Side seamed. Tear Away Label.

XS-3XL; Select colors 4XL

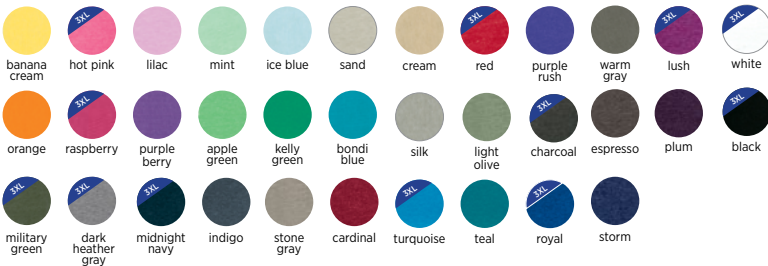




## 6610 | WOMEN'S CVC TEE

CVC Jersey, 32 single 145g/4.3oz 60% Combed Ring-Spun Cotton 40% Poly. Top of the line fabric that stands up to consistent wear without sacrificing fit or feel. Perfect for all your favorite heathered colors plus solid white and black. Side seamed with feminine curve. Set-in collar 1x1 CVC baby rib. Tear away label.

XS-2XL; Select colors 3XL





## 6233 | UNISEX CVC TANK

CVC Jersey. 32 single 145g/4.3oz 60% Combed Ring-Spun Cotton 40% Poly. Top of the line fabric that stands up to consistent wear without sacrificing fit or feel. Perfect in heathered colors. Self-fabric binding. Side seamed. Tear away label.

XS-2XL



ice blue



dark  
heather  
gray



military  
green



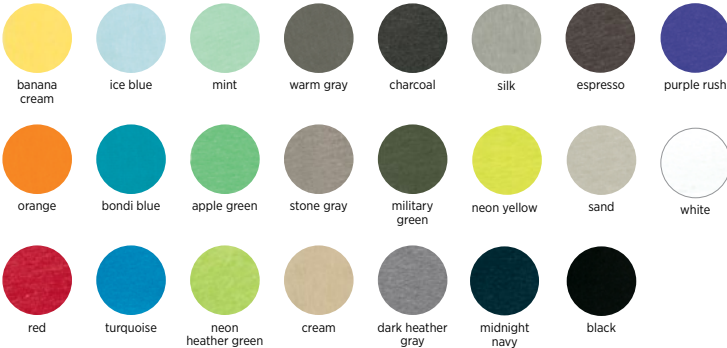
charcoal



## 6240 | MEN'S CVC V

CVC Jersey. 32 single 145g/4.3oz 60% Combed Ring-Spun Cotton 40% Poly. Top of the line fabric that stands up to consistent wear without sacrificing fit or feel. Perfect for all your favorite heathered colors plus solid white and black. Set-in collar. Side seamed. Set-in collar 1x1 CVC baby rib. Tear away label.

S-2XL





## 6640 | WOMEN'S CVC DEEP V

CVC Jersey. 32 single 145g/4.3oz 60% Combed Ring-Spun Cotton 40% Poly. Top of the line fabric that stands up to consistent wear without sacrificing fit or feel. Perfect for all your favorite heathered colors plus solid white and black. Side seamed with feminine curve. Tear away label. Set-in collar 1x1 baby rib. Tear away label.

S-2XL





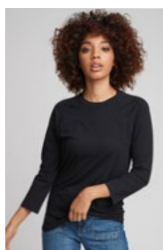
Colors: Sleeve/Body



military green/  
cream



black/  
dark heather gray



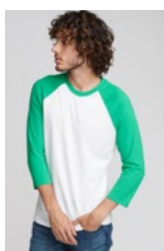
black/  
black



royal/  
white



red/  
white



kelly green/  
white



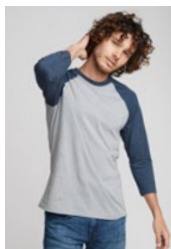
hot pink/  
white



indigo/  
silk



black/  
olive



midnight navy/  
dark heather gray



black/  
white

## 6251 | UNISEX CVC 3/4 SLEEVE RAGLAN

CVC Jersey, 60% Combed Ring-Spun Cotton 40% Polyester 32 single, 145 grams/4.3oz. Top of the line fabric that stands up to consistent wear without sacrificing fit or feel. Collar and cover stitch are the color of the sleeves. Set in collar. Tear away label.

XS-3XL

\*Companion youth style 3352.



### 3352 | YOUTH CVC 3/4 RAGLAN

CVC Jersey. 32 single 145g/4.3oz 60% Combed Ring-Spun Cotton 40% Poly. Top of the line fabric that stands up to consistent wear without sacrificing fit or feel. Collar and cover stitch are the color of the sleeves. Set-in collar. Side seamed. Tear away label.

XS(4/5) - XL(14/16)

\*Companion adult style 6251

Colors: Sleeve/Body





### 3712 | GIRL'S PRINCESS CVC TEE

CVC Jersey. 32 single 145g/4.3oz 60% Combed Ring-Spun Cotton 40% Poly. Top of the line fabric that stands up to consistent wear without sacrificing fit or feel. Side seamed and tailored for girls. Set-in collar with front cover stitch 1x1 CVC baby rib. Tear away label.

XS(3/4) - XL(14/16)



lilac



banana  
cream



mint



ice blue



silk



purple berry



orange



apple green



neon  
heather pink



neon heather  
orange



neon  
yellow



neon heather  
green



bondi blue



raspberry



### 3312 | YOUTH CVC CREW

CVC Jersey. 32 single 145g/4.3oz 60% Combed Ring-Spun Cotton 40% Poly. Top of the line fabric that stands up to consistent wear without sacrificing fit or feel. Perfect for your favorite heathered colors plus solid white and black. Side seamed. Set-in collar 1x1 CVC baby rib. Tear away label.

XS(4/5) - XL(14/16)



# TRI-BLEND



6021 & 6730

**SOFT. LIKE REALLY SOFT.**

VINTAGE LOOK WITH HEATHERED COLORS, STRETCH, AND RECOVERY.  
PRINTERS PREFERRED FABRIC FOR SCREEN-PRINTING.



## 6010 | UNISEX TRI-BLEND CREW

Tri-Blend Jersey. 32 single 145g/4.3oz 50% Poly 25% Combed Ring-Spun Cotton 25% Rayon. A perfect blend that is incredibly soft with great drape, stretch and recovery. Heathered colors with a vintage look. Side seamed. 1x1 tri-blend baby rib set-in collar. Tear away label.

XS-3XL





## 6710 | WOMEN'S TRI-BLEND TEE

Tri-Blend Jersey. 32 single 145g/4.3oz 50% Poly 25% Combed Ring-Spun Cotton 25% Rayon. A perfect blend that is incredibly soft with great drape, stretch and recovery. Heathered colors with a vintage look. Side seamed with feminine curve. 1x1 tri-blend baby rib set-in collar with front cover stitch. Tear away label.

S-2XL





## 6310 | YOUTH TRI-BLEND CREW

Tri-Blend Jersey. 32 single 145g/4.3oz 50% Poly 25% Combed Ring-Spun Cotton 25% Rayon. Kids will appreciate this incredibly soft, lightweight fabric. Heathered colors with a great vintage look. Side seamed. 1x1 tri-blend baby rib set-in collar. Tear away label.

XS(4/5)-XL(14/16)



tahiti blue



vintage turquoise



vintage royal



vintage red



premium heather



vintage navy



vintage black



heather white





## 6040 | MEN'S TRI-BLEND V

Tri-Blend Jersey. 32 single 145g/4.3oz 50% Poly 25% Combed Ring-Spun Cotton 25% Rayon. A perfect blend that is incredibly soft with great drape, stretch and recovery. Heathered colors with a vintage look. Side seamed. 1x1 tri-blend baby rib set-in collar. Tear away label.

S-2XL



vintage  
turquoise



vintage  
royal



envy



heather  
white



vintage red



vintage  
navy



military  
green



premium  
heather



vintage  
black



## 6740 | WOMEN'S TRI-BLEND DEEP V

Tri-Blend Jersey. 32 single 145g/4.3oz 50% Poly 25% Combed Ring-Spun Cotton 25% Rayon. A perfect blend that is incredibly soft with great drape, stretch and recovery. Heathered colors with a vintage look. Side seamed with feminine curve. 1x1 tri-blend baby rib set-in collar. Tear away label.

S-2XL





## 6733 | WOMEN'S TRI-BLEND RACERBACK TANK

Tri-Blend Jersey. 32 single 145g/4.3oz 50% Poly 25% Combed Ring-Spun Cotton 25% Rayon. A perfect blend that is incredibly soft with great drape, stretch and recovery. Heathered colors with a vintage look. Flat-lock finished hems for a raw edge look. Side seamed. Tear away label.

XS-2XL





## 6734 | WOMEN'S TRI-BLEND RACERBACK TANK DRESS

Tri-Blend Jersey. 32 single 145g/4.3oz 50% Poly 25% Combed Ring-Spun Cotton 25% Rayon. A perfect blend that is incredibly soft with great drape, stretch and recovery. Versatile silhouette works as a dress or cover-up. Heathered colors with a vintage look. Self-fabric binding. Side seamed. Tear away label.

XS-2XL



premium  
heather



indigo



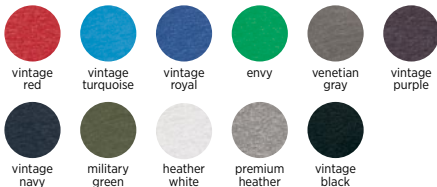
vintage  
black



## 6731 | WOMEN'S TRI-BLEND L/S SCOOP

Tri-Blend Jersey. 32 single 145g/4.3oz 50% Poly 25% Combed Ring-Spun Cotton 25% Rayon. A perfect blend that is incredibly soft with great drape, stretch and recovery. Heathered colors with a vintage look. Side seamed. Flattering scoop neckline. 1x1 tri-blend baby rib set-in collar with front cover stitch. Tear away label.

S-2XL





## 6071 | UNISEX TRI-BLEND L/S CREW

Tri-Blend Jersey. 32 single 145g/4.3oz 50% Poly 25% Combed Ring-Spun Cotton 25% Rayon. A perfect blend that is incredibly soft with great drape, stretch and recovery. Heathered colors with a vintage look. Side seamed. 1x1 tri-blend baby rib set-in collar. Hemmed sleeves. Tear away label.

XS-2XL





**6760 | WOMEN'S TRI-BLEND DOLMAN**

Tri-Blend Jersey. 32 single 145g/4.3oz 50% Poly 25% Combed Ring-Spun Cotton 25% Rayon. Heathered colors with a vintage look. Dolman has a flowy fit that is flattering for all. Side seamed. 1x1 tri-blend baby rib set-in collar with front cover stitch. Tear away label.

XS-3XL





## 6730 | WOMEN'S TRI-BLEND SCOOP

Tri-Blend Jersey. 32 single 145g/4.3oz 50% Poly 25% Combed Ring-Spun Cotton 25% Rayon. A perfect blend that is incredibly soft with great drape, stretch and recovery. Heathered colors with a vintage look. Side seamed with feminine curve. Very flattering scoop neckline. 1x1 tri-blend baby rib set-in collar with front cover stitch. Tear away label.

S-2XL



vintage  
light orange



vintage  
lilac



vintage  
turquoise



envy



military  
green



vintage  
navy



vintage  
purple



vintage  
red



vintage  
shocking  
pink



purple  
rush



vintage  
royal



heather  
white



premium  
heather



vintage  
black





## 6021 | UNISEX TRI-BLEND L/S HOODY

Tri-Blend Jersey. 32 single 145g/4.3oz 50% Poly 25% Combed Ring-Spun Cotton 25% Rayon. A perfect blend that is incredibly soft with great drape, stretch and recovery. Heathered colors with a vintage look. Side seamed. 1x1 tri-blend baby rib cuffs. Three piece, single layer hood. Tear away label.

XS-2XL



## 6072 | MEN'S TRI-BLEND L/S HENLEY

Tri-Blend Jersey. 32 single 145g/4.3oz 50% Poly 25% Combed Ring-Spun Cotton 25% Rayon. A perfect blend that is incredibly soft with great drape, stretch and recovery. Heathered colors with a vintage look. Side seamed. Dyed to match buttons, 3 button placket. Raglan sleeves, hemmed. Tear away label.

S-2XL





## 6051 | UNISEX TRI-BLEND 3/4 RAGLAN

Tri-Blend Jersey. 32 single 145g/4.3oz 50% Poly 25% Combed Ring-Spun Cotton 25% Rayon. A perfect blend that is incredibly soft with great drape, stretch and recovery. Heathered colors with a vintage look. Side seamed. 1x1 tri-blend baby rib set-in collar. Collar and cover stitch are the color of the sleeves. Curved bottom hem, flat-lock finish. Tear away label.

XS-3XL

Colors: Sleeve/Body



# THE ORIGINAL SUEDED



6407 & 6411

## IRRESISTIBLE SOFT AND VELVETY FEEL.

THE UNIQUE BRUSHED FINISHED REMINISCENT OF PEACH-FUZZ.  
PRINTERS PREFERRED FABRIC FOR SCREEN-PRINTING AND HEAT-TRANSFER.



## 6410 | UNISEX SUEDED CREW

Sueded Jersey. 32 single 145g/4.3oz 60% Combed Ring-Spun Cotton 40% Poly. Experience the soft velvet feel and the unique brushed finish of this incredible fabric. Prints like a dream. Available in solid and heathered colors. 1x1 sueded baby-rib set-in collar. Side seamed. Tear away label.

XS-3XL





## 6407 | UNISEX SUEDED SNOW CREW

Sueded Jersey. 32 single 145g/4.3oz 60% Combed Ring-Spun Cotton 40% Poly. Experience the soft velvet feel and the unique brushed finish of this incredible fabric. New look, same incredible velvet soft feel of the original sueded crew. 1x1 sueded baby rib set-in collar. Side seamed. Tear away label.

XS-3XL



snow  
heather  
red



snow  
heather  
green



snow  
heather  
blue



snow  
heather  
indigo



snow  
heather  
gray



### 6440 | UNISEX SUEDED V

Sueded Jersey. 32 single 145g/4.3oz 60% Combed Ring-Spun Cotton 40% Poly. Velvet soft feel and unique brushed finish. Prints like a dream. 1x1 sueded baby rib set-in collar. Side seamed. Tear away label.

XS-2XL



### 6480 | WOMEN'S SUEDED V

Sueded Jersey. 32 single 145g/4.3oz 60% Combed Ring-Spun Cotton 40% Poly. Velvet soft feel and unique brushed finish. Prints like a dream. 1x1 sueded baby-rib set-in collar with front cover stitch. Side seamed. Tear away label.

XS-2XL





## 6491 | UNISEX SUEDED ZIP HOODY

Sueded Jersey. 32 single 145g/4.3oz 60% Combed Ring-Spun Cotton 40% Poly. Velvet soft feel and unique brushed finish. Prints like a dream. Premium dyed matching #5 YKK kissing zipper, unlined hood, 1x1 ribbing at cuffs and waistband, unisex fit. Tear away label.

XS-3XL





## 6411 | UNISEX SUEDED L/S CREW

Sueded Jersey. 32 single 145g/4.3oz 60% Combed Ring-Spun Cotton 40% Poly. Set-in Collar 1x1 Sueded Baby Rib. Velvet soft feel and unique brushed finish. Prints like a dream. Side seamed. Set in collar 1x1 sueded baby rib. 2" rib cuffs. Tear away label.

XS-3XL



heather  
metal



dark  
heather  
gray



heather  
maroon



heather  
cool blue



heather  
forest  
green



white



royal



black



heather  
charcoal



midnight  
navy



cardinal



# MADE IN THE USA



(Left to Right): 3600A, 3900A & 3600A



**FREEDOM TO CHOOSE.**

YOUR NLA FAVORITE IN A USA VERSION.  
KNIT, DYED, CUT, AND SEWN IN THE USA.



### 3600A | UNISEX USA COTTON CREW

Fine Jersey. 100% Combed Ring-Spun Cotton (Heather Gray 90% Cotton/10% Poly.) 32 single 145g/4.3oz. Set-in Collar 1x1 baby rib. Knit, dyed, cut and sewn in the USA. Tear away label.

XS-3XL



black



royal



heather  
gray



red



military  
green



### 3900A | USA WOMEN'S BOYFRIEND TEE

Fine Jersey. 100% Combed Ring-Spun Cotton (Heather Gray 90% Cotton/10% Poly.) 32 single 145g/4.3oz. Set-in Collar 1x1 baby rib. Knit, dyed, cut and sewn in the USA. Tear away label.

XS-3XL



black



white



heather  
gray



### 6010A | UNISEX USA TRI-BLEND CREW

Tri-Blend Jersey. 25% Combed Ring-Spun Cotton/50% Poly/25% Rayon. 32 single 145g/4.3oz. Set-in Collar 1x1 Tri-Blend baby rib. Knit, dyed, cut and sewn in the USA. Tear away label.

XS-3XL



vintage  
black



heather  
white



premium  
heather



indigo



military  
green



vintage  
navy



vintage  
royal



vintage  
red

# SUSTAINABLE



**EARTH-FRIENDLY, ECO-CONSCIOUS, AND SUSTAINABLE.**

FABRIC MADE OF RECYCLED WATER BOTTLES.  
PRINTERS PREFERRED FABRIC FOR SCREEN-PRINTING.



**4600 | UNISEX ECO HEAVYWEIGHT TEE**

**60% Organic Cotton 40% Recycled Poly RPET.**

20 single 190g/5.6oz. New sustainable heavier weight fabric with a premium soft hand. Made of approximately 4 recycled RPET bottles per shirt. Side seamed. Unisex fit. Tear away label.

XS - 3XL





## 4210 | UNISEX ECO PERFORMANCE TEE



**30% Recycled Cotton 30% Cotton 40% Recycled Poly RPET.**

30 single 145g/4.3oz. Performance attributes with an incredibly soft hand. Fabric is made of 70% recycled material and has wicking performance that can draw moisture away from the skin. Made of approximately 3 recycled RPET bottles per shirt. Set in collar 1x1 baby rib. Hemmed sleeves. Side seamed. Unisex fit. Tear away label.

XS - 3XL



white



heather sapphire



cardinal



heavy metal



black



dark heather gray



midnight navy



heather red



heather black



royal pine



**4212 | YOUTH ECO  
PERFORMANCE CREW**



**30% Recycled Cotton 30% Cotton 40%  
Recycled Poly RPET.**

30 single 145g/4.3oz. 1x1 baby rib set-in collar. Hemmed sleeves. Side seamed. Relaxed fit. Pre-shrunk. Tear away label.

XS(4-5)-XL(14-16)

**4240 | WOMEN'S ECO  
PERFORMANCE V**



**30% Recycled Cotton 30% Cotton 40%  
Recycled Poly RPET.**

30 single 145g/w4.3oz. 1x1 baby rib set-in collar. Hemmed sleeves. Side seamed. Relaxed fit. Pre-shrunk. Tear away label.

S-3XL



white



heather  
sapphire



cardinal



heavy  
metal



black



dark  
heather  
gray



midnight  
navy



heather  
red



heather  
black



royal pine

# *Festival*



5030 & 5013

## **THE SUBLIMATION PRINTER'S DREAM.**

LIGHTWEIGHT, SUPER SILKY FABRIC WITH IMPRESSIVE DURABILITY.  
PRINTERS PREFERRED FABRIC FOR SUBLIMATION AND SCREEN-PRINTING.



## 6200 | UNISEX POLY/COTTON CREW

40 single 120g/3.5oz. 65% Poly 35% Combed Ring-Spun Cotton. Set-in collar with front cover stitch. Side seamed. Satin label.

XS-3XL





# Festival



## 5030 | WOMEN'S FESTIVAL SCOOP

40 single 120g/3.5oz. 65% Poly/35% Combed Ring-Spun Cotton. 1x1 baby rib, scoop neckline. Hemmed sleeve. Side seamed. Raw edge, exaggerated droptail hem. Relaxed fit. Stain label.

XS-2XL



## 5040 | WOMEN'S FESTIVAL SLEEVELESS V

40 single 120g/3.5oz. 65% Poly/35% Combed Ring-Spun Cotton. Self-fabric bound v-neck and armhole. Side seamed. Modestly curved hem. Satin label.

XS-2XL



# Festival



## 5033 | WOMEN'S FESTIVAL TANK

40 single 120g/3.5oz. 65% Poly/35% Combed Ring-Spun Cotton. Scoop neckline. Hemmed neck and armhole. Side seamed. Curved hem. Feminine drape. Satin label.

XS-2XL

## 5013 | WOMEN'S FESTIVAL MUSCLE TANK

40 single 120g/3.5oz. 65% Poly/35% Combed Ring-Spun Cotton. Relaxed muscle fit tank. Hemmed, oversized armholes. 1x1 baby rib set-in collar. Side seamed. Slight droptail hem. Satin label.

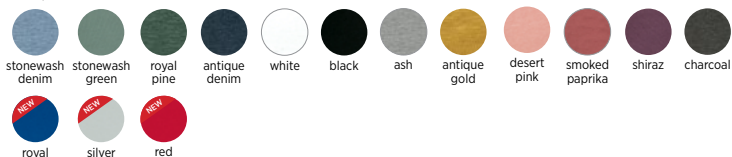
XS-2XL

## 5080 | WOMEN'S FESTIVAL CALI CROP

40 single 120g/3.5oz. 65% Poly/35% Combed Ring-Spun Cotton. 1x1 baby rib, relaxed crew neckline. Raw edge sleeve and hem. Cropped body with relaxed fit. Side seamed. Satin label.

XS-2XL

5033, 5013 & 5080 colors:



# IDEAL



1800

## THE PRICE-CONSCIOUS COLLECTION THAT DELIVERS VALUE AND COMFORT.

FINE GAUGE BLENDED FABRIC WITH ULTRA-SOFT HAND AND PERFORMANCE.  
PRINTERS PREFERRED FABRIC FOR SCREEN-PRINTING.



**OPENING PRICE POINT**



**TUBULAR CONSTRUCTION**



**DEEP INVENTORY**



**PRINTER PREFERRED**



## 1800 | UNISEX IDEAL HEAVYWEIGHT CREW

Heavyweight Jersey. 20 single 100% Cotton 190g/5.6oz. Heavyweight cotton t-shirt in tubular construction. The Street-inspired tee your customer actually wants to wear. Drop shoulder. 1x1 baby-rib set-in collar. Hemmed sleeves. Relaxed fit. Pre-shrunk. Tear away label.

XS-4XL



2021 NEW STYLE

## 1801 | UNISEX IDEAL HEAVYWEIGHT L/S CREW

Heavyweight Jersey. 20 single 100% Cotton 190g/5.6oz. Heavyweight cotton t-shirt in tubular construction. Street-inspired, heavyweight designed with precision, style, and softness to deliver a tubular tee made of 100% cotton. Meet the new benchmark in street. Drop shoulder, relaxed fit, ideal for DTG, discharge, and screen printing. Tear-away label.

XS-4XL





## 1533 | WOMEN'S IDEAL RACERBACK TANK

Lightweight Cotton/Poly Jersey. 30 single 135g/4.0oz 60% Combed Ring-Spun Cotton 40% Poly. Lightweight fabric blend. Racerback. Self-fabric binding. Side seamed. Curved hem. Colors are solid unless otherwise noted. Tear away label.

XS-2XL





## 1540 | WOMEN'S IDEAL V

Lightweight Cotton Poly Jersey. 30 single 135g/4.0oz 60% Combed Ring-Spun Cotton 40% Poly. Modest v-neck, set-in collar 1x1 baby rib with front cover stitch. Side seamed. Colors are solid unless otherwise noted. Tear away label.

XS-2XL; select colors in 3XL

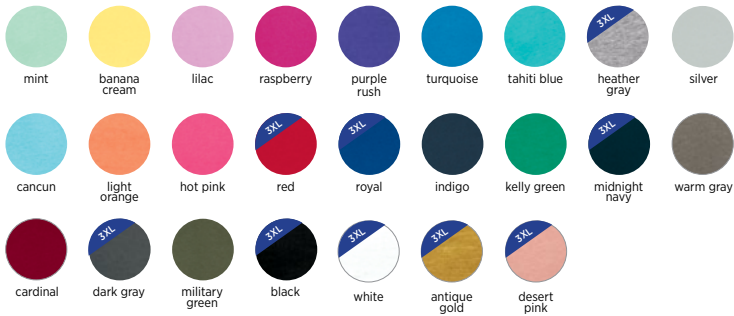




## 1510 | WOMEN'S IDEAL TEE

Lightweight Cotton Poly Jersey. 30 single 135g/4.0oz 60% Combed Ring-Spun Cotton 40% Poly. Lightweight fabric blend. Relaxed crew neckline, set-in collar 1x1 baby rib with front cover stitch. Side seamed. Colors are solid unless otherwise noted. Tear away label.

XS-2XL; select colors in 3XL





## 1560 | WOMEN'S IDEAL DOLMAN

Lightweight Cotton Poly Jersey. 30 single 135g/4.0oz 60% Combed Ring-Spun Cotton 40% Poly. Dolman cut has a flowy fit that is flattering for all. Set-in 1x1 baby rib collar. Side seamed. Curved hem. Colors are solid unless otherwise noted. Tear away label.

XS-3XL







## 1530 | WOMEN'S IDEAL FLOW TEE

Lightweight Cotton Poly Jersey. 30 single 135g/4.0oz. 60% Combed Ring-Spun Cotton 40% Poly. Relaxed crew neckline, set-in collar 1x1 baby rib. Drop tail with curved front and back hem. Generous cut for a loose fit. Side seamed. Colors are solid unless otherwise noted. Tear away label.

XS-2XL



red



purple  
rush



midnight  
navy



heather  
gray



hot pink



white



black



### 1534 | WOMEN'S IDEAL COLOR BLOCK RACERBACK TANK

Lightweight Cotton Poly Jersey. 30 single 135g/4.0oz 60% Combed Ring-Spun Cotton 40% Poly. Racerback. Self-fabric binding matches color of back panel. Side seamed. Curved hem. Colors are solid unless otherwise noted. Tear away label.

XS-2XL

**colors:** front/back and binding



white/black



white/royal



white/hot pink



lilac/heather gray



heather gray/black



turquoise/black



black/red



black/white



black/heather gray

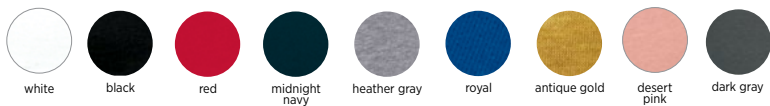


**2021 NEW STYLE**

## **1580 | WOMEN'S IDEAL CROP TEE**

Lightweight Cotton Poly Jersey. 30 single 135g/4.0oz. 60% Combed Ring-Spun Cotton 40% Poly. Inspired by the casual and cool vibe of Southern California, this crop has a modest cut and a length that hits just below the belly button with a finished hem and neck binding. This silhouette is perfect to be paired with yoga pants for working out or your favorite denim to elevate your everyday look. Tear away label.

XS-3XL





## 7481S | WOMEN'S CROPPED L/S TEE

100% Combed Ring-Spun Cotton, 24 single, 175g/5.1oz. Pre-washed fabric. Super soft ring spun cotton adds to the unique quality of this mid-weight cotton tee. 1x1 baby rib set-in collar and cuffs. Tear away label.

XS-2XL



desert  
pink



red



military  
green



midnight  
navy



dark heather  
gray



black



white



## 6933 | WOMEN'S FRENCH TERRY RACERBACK TANK

Lightweight French Terry. 30 single 165g/4.9oz 50% Poly 50% Combed Ring-Spun Cotton. Ultra-soft and lightweight. Side seamed. Hemmed neck, armholes, and bottom. Satin label.

XS-2XL

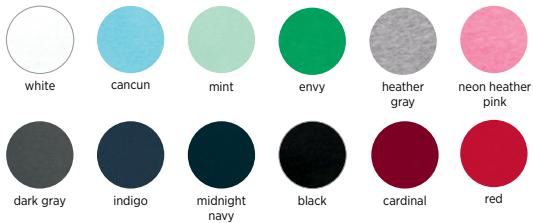




## 6951 | WOMEN'S FRENCH TERRY 3/4 RAGLAN

Lightweight French Terry. 30 single 165g/4.9oz 50% Poly 50% Combed Ring-Spun Cotton (Heather Gray 93% Cotton/7% Poly). Ultra-soft and lightweight. Raw edge at neck. Side seamed. Self-fabric cuffs and waistband. Satin label.

S-2XL





### **6360 | WOMEN'S ROLL SLEEVE DOLMAN**

Lightweight Cotton Poly Jersey, 30 single 135g/4.0oz 60% Combed Ring-Spun Cotton 40% Poly. Dolman cut has a flowy fit that is flattering for all. Set-in 1x1 baby rib collar. Side seamed. Curved hem. Lightweight fabric blend. Set-in Collar 1x1 Baby Rib. Tear Away Label.

XS-2XL



red



turquoise



heather  
gray



white



black



## 6333 | UNISEX MUSCLE TANK

Lightweight Cotton Poly Jersey. 30 single 135g/4.0oz 60% Combed Ring-Spun Cotton 40% Poly. Set-in Collar 1x1 Baby Rib. Side seamed, hemmed armhole. Tear Away Label.

XS-3XL



red



royal



heather  
gray



midnight  
navy



heavy  
metal



military  
green



white



black





### **6338 | WOMEN'S GATHERED RACERBACK TANK**

Lightweight Cotton Poly Jersey. 30 single 135g/4.0oz 60% Combed Ring-Spun Cotton 40% Poly. Set-in Collar 1x1 Baby Rib. Tear Away Label.

XS-2XL





### 3533 | WOMEN'S SPANDEX JERSEY TANK

Spandex Jersey. 40 single 145g/4.3oz 57% Combed Ring-Spun Cotton 38% Poly 5% Spandex. Soft spandex jersey has great stretch and recovery. Self-fabric binding. Side seamed. Figure hugging silhouette. Scoop front and back neckline. Satin label.

XS-2XL



### 6633 | WOMEN'S SPANDEX JERSEY RACERBACK TANK

Spandex Jersey. 40 single 145g/4.3oz 57% Combed Ring-Spun Cotton 38% Poly 5% Spandex. Soft spandex jersey has great stretch and recovery. Self-fabric binding. Side seamed. Fitted silhouette. Satin label.

XS-2XL



# MOCK TWIST



**ATHLEISURE VIBES: FROM STUDIO TO STREET.**

SOFT AND SILKY LOOK FROM THE FAVORITE RING-SPUN/POLY BLEND.  
PRINTERS PREFERRED FABRIC FOR SCREEN-PRINTING AND HEAT TRANSFER.



## 2050 | MEN'S MOCK TWIST RAGLAN CREW

Mock Twist Jersey. 20 single 175g/5.1oz 60% Combed Ring-Spun Cotton 40% Poly. Athleisure look with softness of a ring-spun/poly blend. Side seamed. Raglan sleeve with contrast flat-lock top stitch. Self-binding collar. Tear away label.

S-3XL



tech  
pink



tech  
maroon



heather  
gray



indigo



forest  
green



black



tech red



tech royal



## 2021 | UNISEX MOCK TWIST RAGLAN HOODY

Mock Twist Jersey. 20 single 175g/5.1oz 60% Combed Ring-Spun Cotton 40% Poly. Athleisure look with the softness of a ring-spun/poly blend. Slightly relaxed athletic fit. Curved bottom hem with drop tail and side slit. Side seamed. Tear away label.

XS-3XL



tech  
pink



tech  
maroon



heather  
gray



indigo



forest  
green



black



## 2022 | UNISEX MOCK TWIST SHORT SLEEVE HOODY

Mock Twist Jersey. 20 single 175g/5.1oz 60% Combed Ring-Spun Cotton 40% Poly. Athleisure look with the softness of a ring-spun/poly blend. Slightly relaxed athletic fit. Curved bottom hem with drop tail and side slit. Side seamed. Tear away label.

XS-3XL



tech  
pink



tech  
maroon



heather  
gray



indigo



forest  
green



black

# INSPIRED DYE



(left to right): 7433, 7451, 7401, 7410 & 7410

## LIVED-IN LOOK AND FEEL GARMENT DYE.

SOFT SHADES AND SLIGHT COLOR VARIATION GIVING EACH SHIRT UNIQUE CHARACTER.  
PRINTERS PREFERRED FABRIC FOR SCREEN-PRINTING.



**7433 | UNISEX INSPIRED DYE  
TANK**

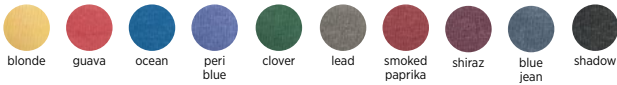
Inspired Dye. 24 single 175g/5.1oz 100% Combed Ring-Spun Cotton. Garment dyed. Side seamed. Self-fabric binding. Tear away label.

XS-3XL

**7415 | UNISEX INSPIRED DYE  
POCKET CREW**

Inspired Dye. 24 single 175g/5.1oz 100% Combed Ring-Spun Cotton. Garment Dyed. 1x1 baby rib set-in collar with front cover stitch. Side seamed. Twill tape at back neck. Tear away label.

XS-3XL







**7451 | UNISEX INSPIRED DYE  
L/S POCKET CREW**

Inspired Dye. 24 single 175g/5.1oz 100% Combed Ring-Spun Cotton. Garment Dye. 1x1 baby rib set-in collar with front cover stitch and cuffs. Side seamed. Twill tape at back neck. Tear away label.

XS-3XL



**7410 | UNISEX INSPIRED DYE CREW**

Inspired Dye. 24 single 175g/5.1oz 100% Combed Ring-Spun Cotton. Garment Dyed. 1x1 baby rib set-in collar with front cover stitch. Side seamed. Twill tape at back neck. Tear away label.

XS-3XL





**7401 | UNISEX INSPIRED DYE L/S CREW**

Inspired Dye. 24 single 175g/5.1oz 100% Combed Ring-Spun Cotton. Garment dyed. 1x1 baby rib set-in collar with front cover stitch and cuffs. Side seamed. Twill tape at back neck. Tear away label.

XS-3XL



**7410S | UNISEX POWER CREW**

Midweight Jersey. 100% Combed Ring-Spun Cotton. 24 single 175g/5.1oz Pre-washed fabric. Super soft ring-spun cotton adds to the unique quality of this mid-weight cotton tee. 1x1 baby rib set-in collar with front cover stitch. Double needle top-stitch around armholes. Side seamed. Dye-to-match twill tape at back neck. Tear away label.

XS-3XL



# WAFFLE THERMAL



**PREMIUM QUALITY MADE TO LAST.**

SOFT AND WARM, LIGHTWEIGHT WITH A SMOOTH AND SUPPLE HAND.  
PRINTERS PREFERRED FABRIC FOR SCREEN-PRINTING AND HEAT TRANSFER.



### 8201 | UNISEX THERMAL L/S CREW

Waffle Thermal. 36 single 190g/5.6oz 60% Combed Ring-Spun Cotton 40% Poly. Incredibly soft and warm micro-waffle thermal. Smooth print surface. Self-fabric neck. 1x1 baby rib cuff. Side seamed. Flat-lock stitched seams and hem. Contrast stitch offerings noted. Tear away label.

XS-2XL



### 8221 | UNISEX THERMAL HOODY

Waffle Thermal. 36 single 190g/5.6oz 60% Combed Ring-Spun Cotton 40% Poly. Incredibly soft and warm micro-waffle thermal. Smooth print surface. Self-fabric unlined hood. 1x1 baby rib cuff. Side seamed. Flat-lock stitched seams and curved hem. Contrast stitch offerings noted. Tear away label.

XS-3XL



# BEACH FLEECE



9000

LIFE'S A BEACH.

SOFT AND WARM, LIGHTWEIGHT WITH A SMOOTH AND SUPPLE HAND.  
PRINTER'S PREFERRED FABRIC FOR SCREEN-PRINTING AND HEAT TRANSFER.



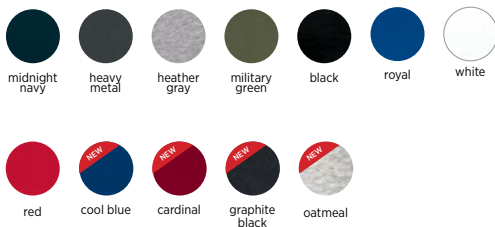
9600



## 9000 | UNISEX FRENCH TERRY L/S CREW

Midweight French Terry. 30 single 180g/5.3oz. 60% Cotton 40% Poly. Raglan sleeve, 1x1 ribbing at collar, waistband and cuffs, classic v-notch neck detail. Tear away label.

XS-3XL





## 9601 | UNISEX FRENCH TERRY ZIP HOODY

Midweight French Terry. 30 single 180g/5.3oz. 60% Cotton 40% Poly. Contrasting and matching jersey lined hood and flat drawcord, metal eyelets, 1x1 ribbing at cuffs and waistband. Tear away label.

XS-3XL

Colors: body/hood liner & drawcord



heather gray/  
heather gray



white/  
heather gray



royal/  
heather gray



midnight navy/  
heather gray



heavy metal/  
heavy metal



black/  
black



black/  
gold



black/  
red





### **9301 | UNISEX FRENCH TERRY PULLOVER HOODY**

Midweight French Terry. 30 single 180g/5.3oz. 60% Cotton 40% Poly. Contrasting and matching jersey lined hood and flat drawcord, metal eyelets, 1x1 ribbing at cuffs and waistband. Tear away label.

XS-3XL



Colors: body/hood liner & drawcord



heather gray/  
kelly green



heather  
gray/royal



heather  
gray/black



heather gray/  
midnight navy



white/  
heather gray



black/  
desert pink



military  
green/black



red/black



midnight navy/  
heather gray



black/heather  
gray



black/red



black/gold



black/  
turquoise



black/black



heavy metal/  
heavy metal



royal/gold



## 9600 | UNISEX DENIM FLEECE ZIP HOODY

Denim fleece. 53% Cotton 47% Poly, 7.4oz heather denim-inspired fleece. Exposed premium antique brass YKK zipper, drawcord, 1x1 solid color ribbing at cuffs and waist. Tear away label.

XS-3XL



black



navy



plum



military  
green



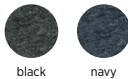
turquoise



## 9800 | MEN'S DENIM FLEECE JOGGER

Denim fleece. 53% Cotton 47% Poly, 7.4oz heather denim-inspired fleece. Side pockets, back pocket, solid color ribbed waistband and bottom cuffs, super-soft fleece. Tear away label.

S-2XL



black

navy

# 80/20 FLEECE



COMFORT AND STYLE.

EXCEPTIONAL SOFTNESS AND STRENGTH.  
SCREEN-PRINTING, DTG DISCHARGE, HEAT-TRANSFER



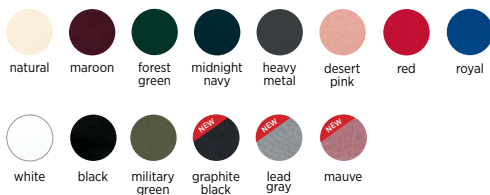
9001



## 9303 | UNISEX 80/20 FLEECE PULLOVER HOODY

80/20 Fleece. 80% Cotton 20% Poly. 30 single 250g/7.4oz. Front pocket, natural drawcord, jersey lined hood, ribbed cuffs and band, locker patch for printable label, 100% cotton face. Tear away label.

XS-3XL





## 9001 | UNISEX 80/20 FLEECE POCKET CREW

80/20 Fleece. 80% Cotton 20% Poly. 30 single 250g/7.4oz. Front Pocket, locker patch for printable label, 100% cotton face. Tear away label.

XS-3XL







## 9602 | UNISEX 80/20 FLEECE ZIP HOODY

80/20 Fleece. 80% Cotton 20% Poly. 30 single 250g/7.4oz. Exposed premium antique brass YKK zipper, natural drawcord, jersey lined hood, ribbed cuffs and band, locker patch for printable label. 100% cotton face. Tear away label.

XS-3XL





### 9103 | YOUTH 80/20 FLEECE ZIP HOODY

80/20 Fleece. 80% Cotton 20% Poly. 30 single 250g/7.4oz. No drawcord, ribbed cuffs and band, kissing zipper with dyed to match neck tape, locker patch for printable label. 100% cotton face. Tear away label.

XS(4/5) - XL(14/16)



# PCH FLEECE



**BEST TRAVEL FLEECE COMPANION.**

LIGHTWEIGHT, KEEPING YOU COMFORTABLE ON LONG OR SHORT JOURNEYS.  
PRINTERS PREFERRED FABRIC FOR SCREEN-PRINTING.



9302 & 9002



### 9300 | UNISEX PCH PULLOVER HOODY

PCH Fleece. 30 single 250g/7.4oz 60% Cotton 40% Poly. Heathered fleece with unique pockets for a clean finished look. Metal eyelets, drawcord, 1x1 ribbing at cuffs, unisex fit. Tear away label.

XS-3XL



heather cardinal



heather bay blue



heather gray



heather teal



heather military green



heather maroon



heather midnight navy



heather black



oatmeal



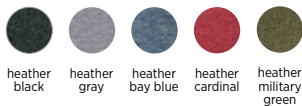
heather slate blue



### 9603 | WOMEN'S PCH RAGLAN ZIP HOODY

PCH Fleece. 30 single 250g/7.4oz Heathered Fleece. 60% Cotton 40% Poly. Natural drawcord and exposed premium antique brass YKK zipper, jersey lined hood. Tear away label.

XS-2XL





**2021 NEW STYLE**

**9302 | UNISEX PCH FLEECE PULLOVER HOODY**

PCH Fleece. 30 Singles. 250g/7.4oz Heathered Fleece. 60% Cotton 40% Poly. Lightweight with matching drawstrings with front pocket, ribbed cuffs and band. Locker patch. Tear away label.

XS-3XL



heather black

heather gray

heather cardinal

heather military green



heather midnight navy

oatmeal

heather slate blue

**2021 NEW STYLE**

**9002 | UNISEX PCH PULLOVER CREW**

PCH Fleece. 30 single 250g/7.4oz. 60% Cotton 40% Poly. Heathered Fleece. A classic sweatshirt construction, a comfortable relaxed fit with just the right amount of weight to keep you cozy. Features a ribbed crew neck with ribbed cuffs, hem and locker patch. Tear away label.

XS-3XL



heather maroon

heather bay blue

heather teal

heather military green

heather midnight navy

oatmeal

heather black

heather gray

heather cardinal



## 9700 | UNISEX PCH BOMBER JACKET

PCH Heathered Fleece. 60% Cotton 40% Poly. 30 single 250g/7.4oz. Solid black ribbing on neck and cuffs, raglan sleeve, locker patch for printable label. Exposed premium antique brass YKK zipper. Tear away label.

XS-3XL



heather  
gray



heather  
military  
green



heather  
black



# INDEX

<b>NLA DNA</b>	2	<b>6233:</b> Unisex CVC Tank	31
<b>Table of Contents</b>	3-4	<b>6240:</b> Unisex CVC V	32
<b>2021 New Styles</b>	5	<b>6251:</b> Unisex CVC 3/4 Sleeve Raglan	34
<b>Style Index</b>	6-7	<b>6310:</b> Unisex Youth Tri-blend Crew	41
<b>Brand Pillars</b>	8	<b>6333:</b> Unisex Muscle Tank	81
<b>Wholesale Partner Network</b>	9	<b>6338:</b> Women's Gathered Racerback Tank	82
<b>Social &amp; Eco Ethos</b>	10	<b>6360:</b> Women's Roll Sleeve Dolman	80
<b>Sustainable Commitment</b>	11	<b>6407:</b> Unisex Sueded Snow Crew	54
<b>Brand Timeline</b>	12-13	<b>6410:</b> Unisex Sueded Crew	53
<b>1510:</b> Women's Ideal Tee	72	<b>6411:</b> Unisex Sueded L/S Crew	57
<b>1530:</b> Women's Ideal Flow Tee	74	<b>6440:</b> Unisex Sueded V	55
<b>1533:</b> Women's Ideal Racerback Tank	70	<b>6480:</b> Women's Sueded V	55
<b>1534:</b> Women's Ideal Color block Racerback Tank	75	<b>6491:</b> Unisex Sueded Zip Hoody	56
<b>1540:</b> Women's Ideal V	71	<b>6610:</b> Women's CVC Boyfriend Tee	30
<b>1560:</b> Women's Ideal Dolman	73	<b>6633:</b> Women's Spandex Jersey Racerback Tank	83
<b>1580:</b> Women's Ideal Crop Tee <b>NEW</b>	76	<b>6640:</b> Women's CVC Deep V	33
<b>1800:</b> Unisex Ideal Heavyweight Crew	69	<b>6710:</b> Women's Tri-Blend Tee	40
<b>1801:</b> Unisex Ideal Heavyweight L/S Crew <b>NEW</b>	69	<b>6730:</b> Women's Tri-Blend Scoop	49
<b>2021:</b> Unisex Mock Twist Raglan Hoody	86	<b>6731:</b> Women's Tri-Blend L/S Scoop	46
<b>2022:</b> Unisex Mock Twist S/S Hoody	87	<b>6733:</b> Women's Tri-Blend Racerback Tank	44
<b>2050:</b> Men's Mock Twist Raglan Crew	85	<b>6734:</b> Women's Tri-Blend Racerback Tank Dress	45
<b>3110:</b> Toddler Cotton Tee	27	<b>6740:</b> Women's Tri-Blend Deep V	43
<b>3200:</b> Men's Cotton V	20	<b>6760:</b> Women's Tri-Blend Dolman	48
<b>3310:</b> Youth Cotton Crew	27	<b>6933:</b> Women's French Terry Racerback Tank	78
<b>3312:</b> Youth CVC Crew	37	<b>6951:</b> Women's French Terry 3/4 Raglan	79
<b>3352:</b> Youth CVC 3/4 Raglan	35	<b>7401:</b> Unisex Inspired Dye L/S Crew	91
<b>3533:</b> Women's Spandex Jersey Tank	83	<b>7410:</b> Unisex Inspired Dye Crew	90
<b>3600:</b> Unisex Cotton Crew	15	<b>7410S:</b> Unisex Power Crew	91
<b>3600A:</b> Unisex USA Cotton Crew	59	<b>7415:</b> Unisex Inspired Dye Pocket Crew	89
<b>3601:</b> Men's Cotton L/S	17	<b>7433:</b> Unisex Inspired Dye Tank	89
<b>3602:</b> Men's Cotton Long Body Crew	19	<b>7451:</b> Unisex Inspired Dye L/S Pocket Crew	90
<b>3604:</b> Unisex Cotton Ringer Tee	24-25	<b>7481S:</b> Women's Cropped L/S Tee	77
<b>3605:</b> Unisex Cotton Pocket Crew	19	<b>8201:</b> Unisex Thermal L/S Crew	93
<b>3633:</b> Cotton Tank	18	<b>8221:</b> Unisex Thermal Hoody	93
<b>3650:</b> Unisex Cotton Raglan Tee	22-23	<b>9000:</b> Unisex French Terry Raglan Crew	96
<b>3710:</b> Girl's Princess Cotton Tee	26	<b>9001:</b> Unisex 80/20 Fleece Pocket Crew	105
<b>3712:</b> Girl's Princess CVC Tee	36	<b>9002:</b> Unisex PCH Pullover Crew <b>NEW</b>	112
<b>3900:</b> Women's Cotton Boyfriend Tee	16	<b>9103:</b> Unisex 80/20 Youth Fleece Hoody	107
<b>3900A:</b> Women's USA Cotton Boyfriend Tee	59	<b>9300:</b> Unisex PCH Pullover Hoody	110
<b>3904:</b> Women's Cotton Ringer Tee	24-25	<b>9301:</b> Unisex French Terry Pullover Hoody	98-99
<b>3940:</b> Women's Relaxed V	21	<b>9302:</b> Unisex PCH Fleece Pullover Hoody <b>NEW</b>	112
<b>4210:</b> Unisex Eco Performance Tee	62	<b>9303:</b> Unisex 80/20 Fleece Pullover Hoody	104
<b>4212:</b> Youth Eco Performance Crew	63	<b>9600:</b> Unisex Denim Fleece Zip Hoody	100
<b>4240:</b> Women's Eco Performance V	63	<b>9601:</b> Unisex French Terry Zip Hoody	97
<b>4600:</b> Unisex Eco Heavyweight Tee	61	<b>9602:</b> Unisex 80/20 Fleece Zip Hoody	106
<b>5013:</b> Women's Festival Muscle Tank	67	<b>9603:</b> Women's PCH Zip Hoody	111
<b>5030:</b> Women's Festival Scoop	66	<b>9700:</b> Unisex PCH Bomber Jacket	113
<b>5033:</b> Women's Festival Tank	67	<b>9800:</b> Men's Denim Fleece Jogger	101
<b>5040:</b> Women's Festival Sleeveless V	66		
<b>5080:</b> Women's Festival Cali Crop	67		
<b>6010:</b> Unisex Tri-Blend Crew	39		
<b>6010A:</b> Unisex USA Tri-Blend Crew	59		
<b>6021:</b> Unisex Tri-Blend L/S Hoody	50		
<b>6040:</b> Men's Tri-Blend V	42		
<b>6051:</b> Unisex Tri-Blend 3/4 Raglan	51		
<b>6071:</b> Unisex Tri-Blend L/S Crew	47		
<b>6072:</b> Men's Tri-Blend L/S Crew	50		
<b>6200:</b> Unisex Poly/Cotton Crew	65		
<b>6210:</b> Unisex CVC Crew	29		

# SIZE GUIDE

Gender	XS	S	M	L	XL	2XL	3XL	4XL
Men's/Unisex (Chest)	33"-35"	35" - 38"	38" - 41"	43" - 44"	45" - 48"	48" - 52"	53.5" - 56"	60"
Women's Fitted (Chest)		29.5"	31.5"	33.5"	36.5"	39.5"		
Women's Fitted (Size)		0 - 2	2 - 4	4 - 6	8 - 10	12		
Women's Relaxed/Classic (Chest)	30"	32"	34"	36"	39"	42"	45.5"	
Women's Relaxed/Classic (Size)	0 - 2	2 - 4	4 - 6	8 - 10	12 - 14	14 - 16	18 - 20	
Women's Relaxed 2019 (Chest)	33"	35"	37"	39"	42"	45"	48"	
Women's Relaxed 2019 (Size)	0-2	2-4	4-6	8-10	12-14	14-16	18-20	
Women's Dolman/Flowy (Chest)	35"	37"	38"	40"	44"	47"	50"	
Women's Dolman/Flowy (Size)	2 - 6	4 - 8	6 - 10	8 - 12	12 - 16	18 - 20	20 - 24	
Women's Oversize Fit (Chest)	43"	45"	47"	49"	52"	55"		
Women's Oversize Fit (Size)	2-6	4-8	6-10	8-12	12-16	18-20	20-24	
Boys/Youth (Size)	4/5	6/7	8	10/12	14/16			
Girls' (Size)	3/4	6/6X	7/8	10/12	14/16			
Toddler (Size)	2T	3T	4T					
Men's Joggers (Waist)		29"	31"	33"	35"	37"		
Men's Joggers (Inseam)		30"	30"	30"	30.5"	31"		
Women's Joggers (Waist)	26.5"	28.5"	30.5"	32.5"	34.5"	36.5"		
Women's Joggers (Inseam)	27.75"	28"	28.25"	28.5"	28.75"	29"		

## UNISEX FIT

SIZE EQUIVALENT	XS	S	M	L	XL	2XL	3XL	4XL
Men's	XS	S	M	L	XL	2XL	3XL	4XL
Women's	S	M	L	XL	2XL	3XL	N/A	N/A

Please visit [www.nextlevelapparel.com](http://www.nextlevelapparel.com) for any product inquiries.

