

Est. 2018

# TAIMANTA

---

Lake Constance, Germany



TAIMANTA invented the perfect towels for “on-the-go”, combining extraordinary design with practicality and sustainability. We traveled the world for many years. Inspired by the colorful impressions of different countries and cultures, we kept asking ourselves why conventional outdoor towels are bulky and monotonous.

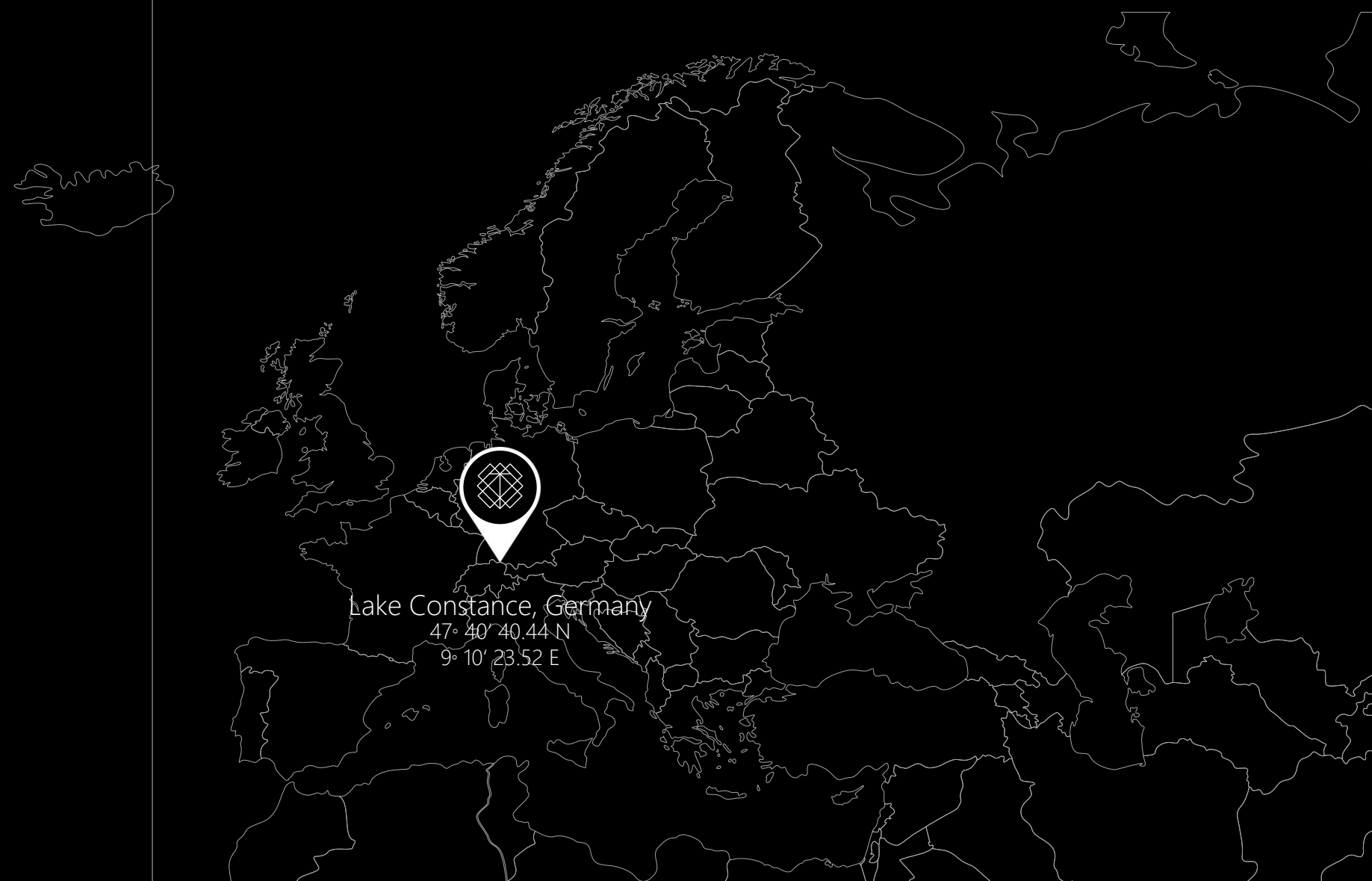
That's how a simple idea was born: Inspiring and, at the same time, practical towels. Towels that are as vibrant as the world and that you pack into your bag full of excitement about the next adventure. Towels that are big enough to make you relax on any beach, yet compact and light enough to fit easily into any bag.

This idea has been our passion since TAIMANTA was founded in 2018. Today, TAIMANTA towels can be found on every continent and we are happy for every adventurer for whom the TAIMANTA towel has become indispensable while “on-the-go”.

We care about doing our bit to preserve the breathtaking landscapes. Already 56% of every TAIMANTA towel is made from recycled post-consumer polyester (RPET). We rely on sustainable RESY certified packaging and ship carbon neutral. For every towel sold, TAIMANTA donates one euro to *The Ocean Cleanup* supporting ocean conservation.

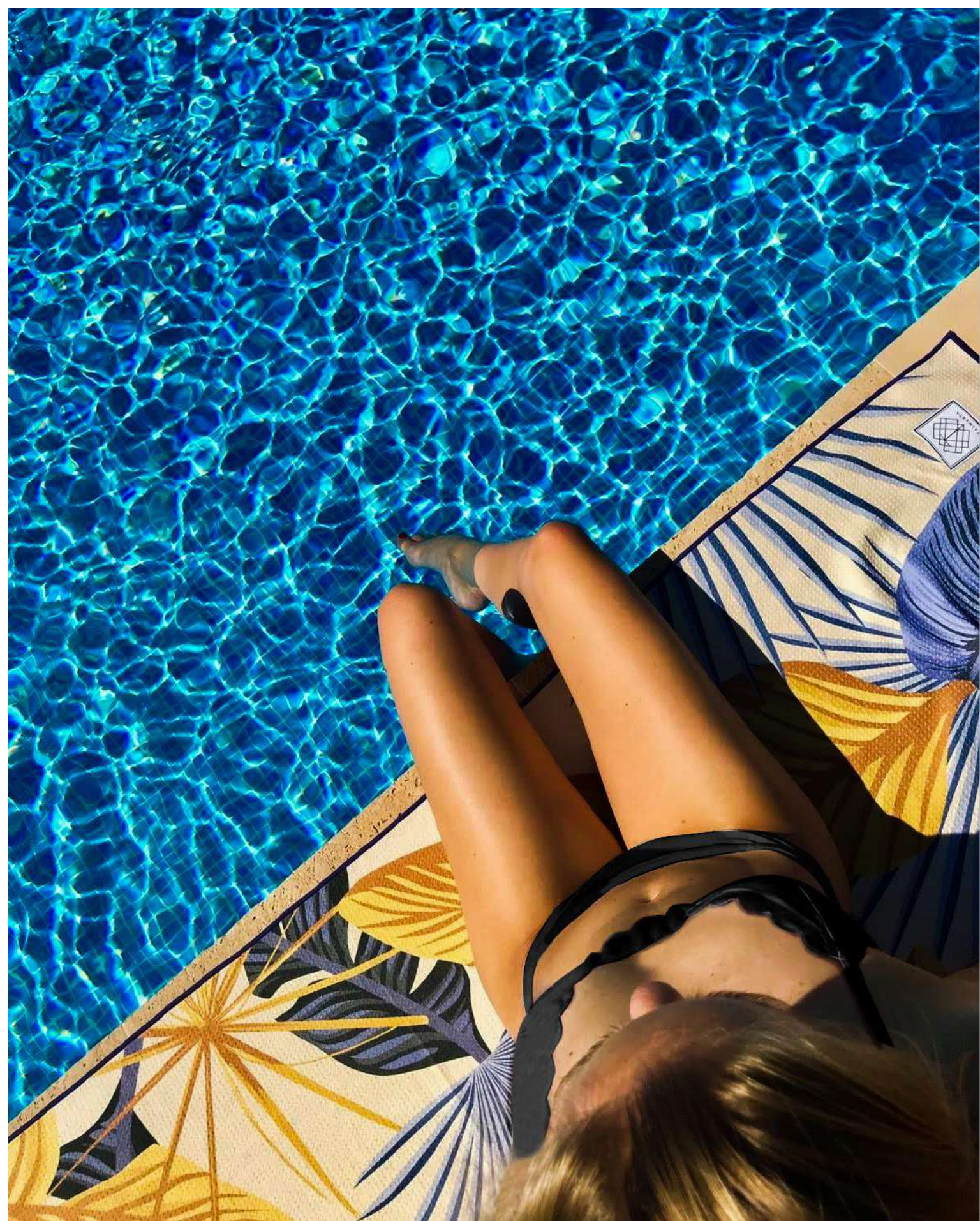
Our efforts continue. Soon we will use 100% recycled fabric. And we will of course continue to surprise with new, inspiring designs.

Meiyu and Frederik



# UNLEASH YOUR OUTDOOR EXPERIENCE

Ultimate comfort on 200 x 80 cm inspiring outdoor towels.



2

All designs are created with **great attention to detail**. The front depicts elements from **nature, culture and architecture**. The back of each outdoor towel is also absolutely worth seeing with a **timeless black and white pattern**.



3



4

- 1 | ■ Design *Palmarin* | 📍 Cala Pi, Spain
- 2 | ■ Design *Narbonne* | 📍 Barcelona, Spain
- 3 | ■ Design *Samarkand* | 📍 San Sebastian, Spain
- 4 | ■ Design *Kyoto* | 📍 King Island, Australia

# YOU CHERISH OUR PLANET – SO DO WE

Outdoor towels made with upcycled fabric and shipped sustainably.



56% of each towel made from recycled GRS-certified post-consumer polyester (RPET)



RESY certified packaging for guaranteed material recycling



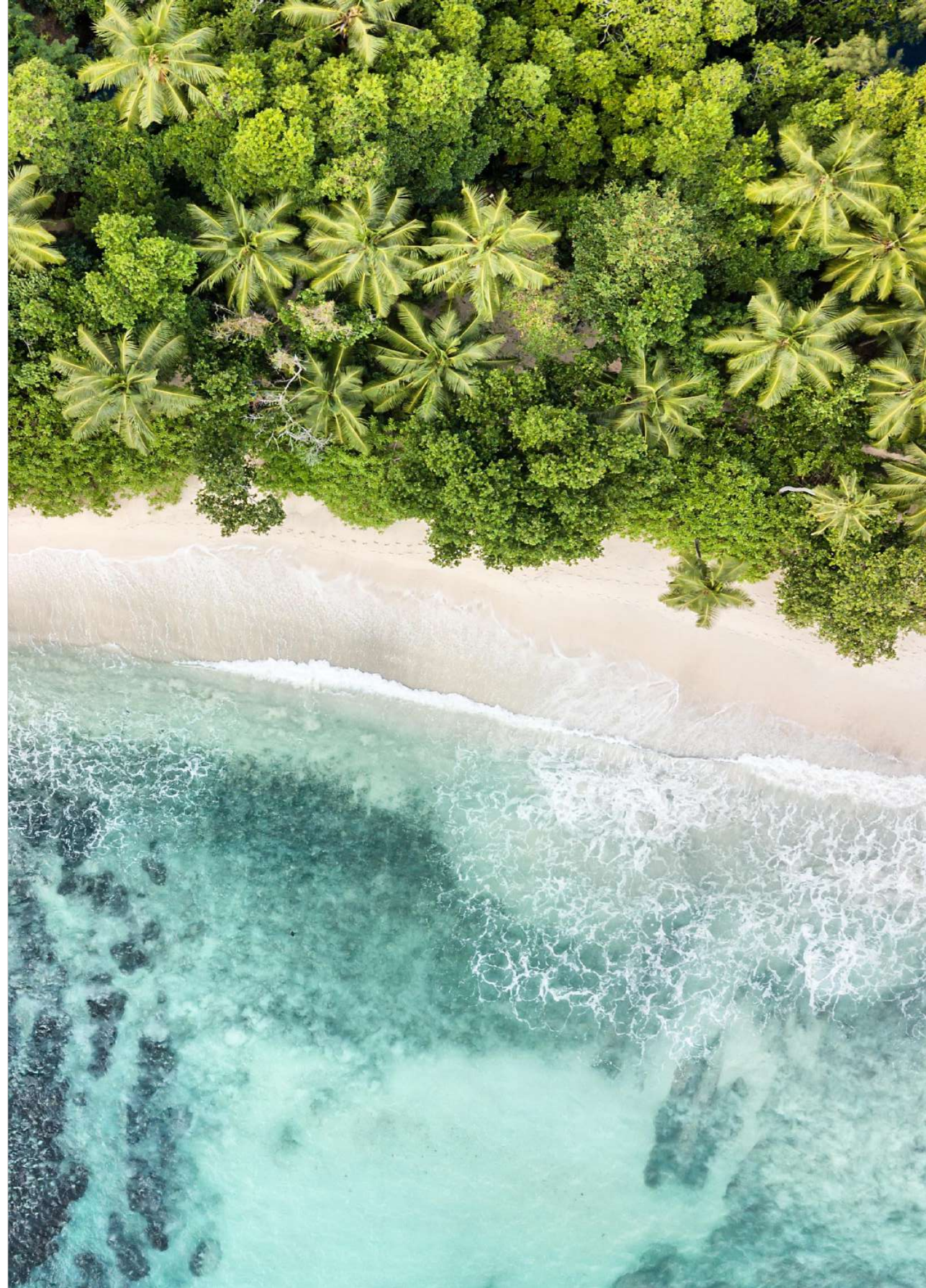
CO<sub>2</sub> neutral transportation of shipments



1 EUR donation to *The Ocean Cleanup* for every sold towel

## Upcycling process

- 1 Used PET bottles are collected, sorted and cleaned.
- 2 They get crushed, shredded into small flakes and melted to a liquid.
- 3 The hot liquid gets filtered and extruded to become filaments after cooling down.
- 4 The fiber is woven into a durable, high-quality fabric.
- 5 A new towel is made from the recycled PET bottles.



# SIMPLY RELAX AND ENJOY

Not only stunningly beautiful but also exceptionally practical.



1



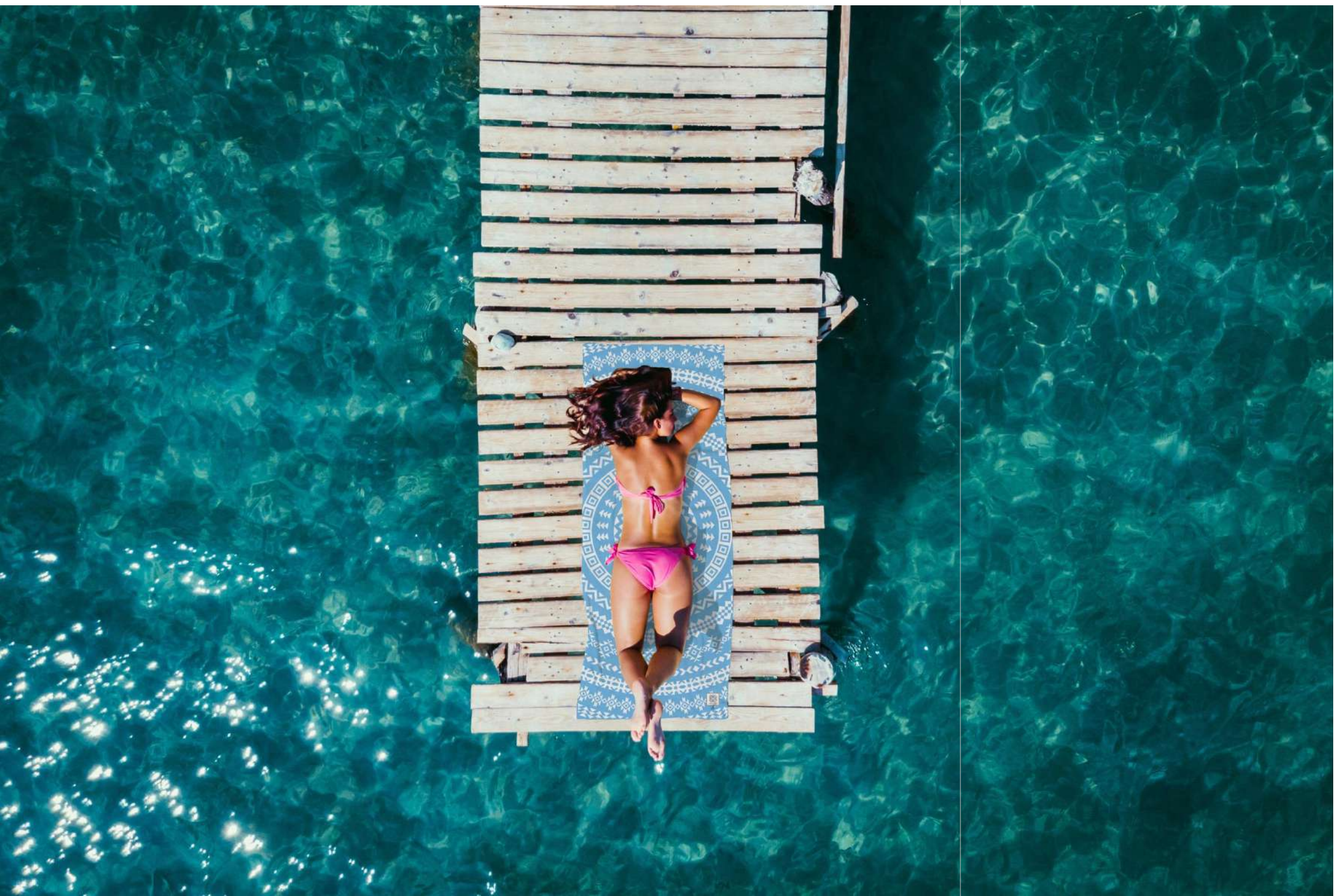
2

TAIMANTA outdoor towels are extra large with 200 x 80 cm so that really everyone can stretch out and relax. Thanks to the innovative fabric, all towels can be folded up small and packed quickly in a practical bag that is delivered together with every towel. TAIMANTA towels can be easily hung up with the hook and dry rapidly.



# MADE FOR BETTER DAYS OUT THERE

The new essential – perfect for traveling, swimming, yoga and fitness.



1



2



3

- 1 | ■ Design Waikiki | 📍 Cala Pi, Spain
- 2 | ■ Design Cuzco | 📍 Lake Zurich, Switzerland
- 3 | ■ Design Acapulco | 📍 Marseille, France

## FINEST QUALITY THAT YOU WILL LOVE

Feel the difference with our innovative fabric technology.



### Lightweight & compact.

Weigh only 500 g and fold up small, so TAIMANTA outdoor towels fit in any bag.



### Rapid drying.

Dry 2x faster than conventional towels and thus prevent possible bacteria build-up.



### Sand-free.

Keep the sand on the beach thanks to advanced sand-resistant fabric technology.



### Comfy & soft.

An exceptional thickness of 340 g/m<sup>2</sup> ensures that every TAIMANTA outdoor towel feels comfortable.



### Ultra absorbent.

Hold up to 1 liter of water and make it the superior choice for drying off.



### Long-lasting.

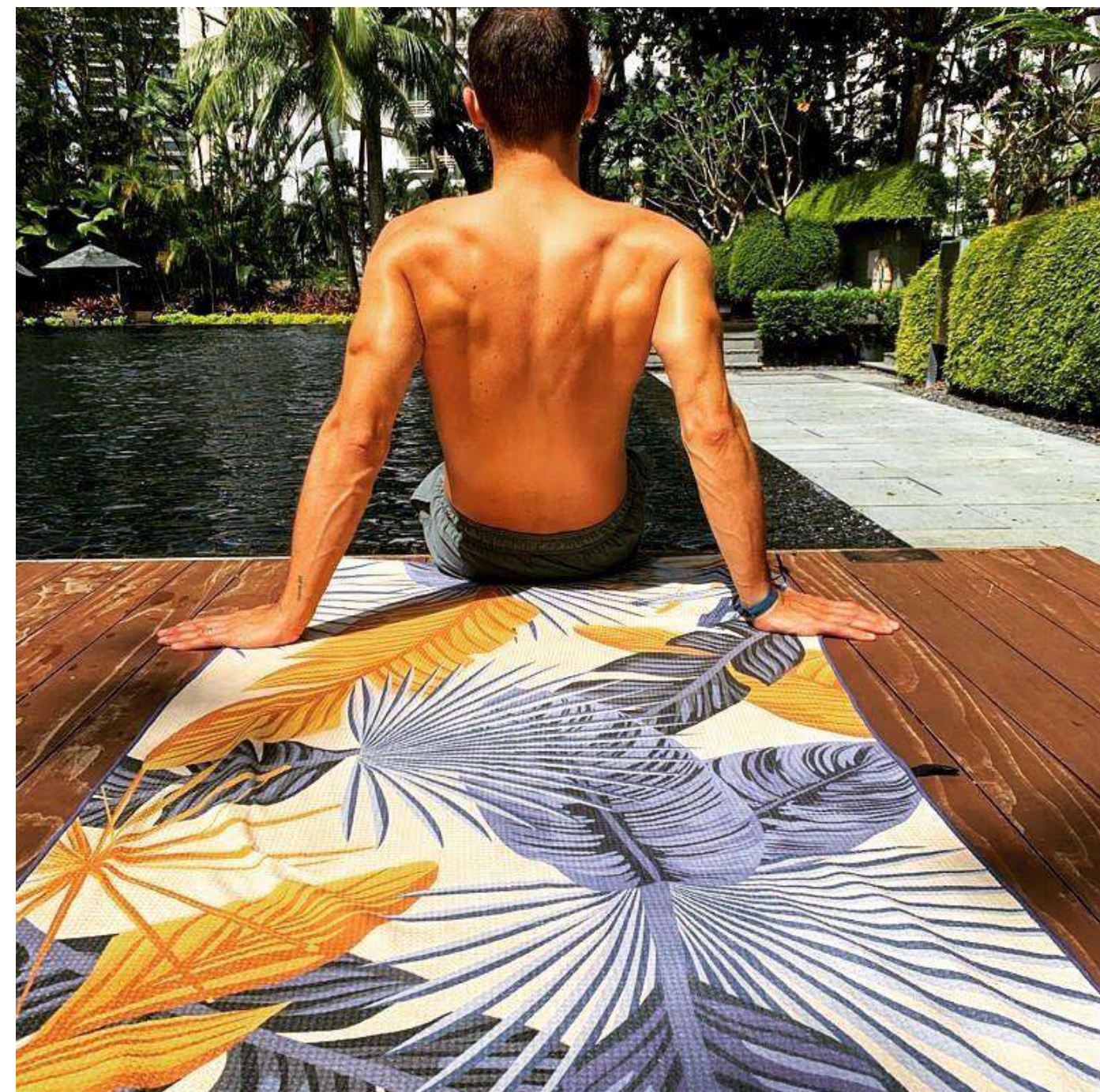
High quality fabric and manufacture ensure that the feel and color intensity are maintained for many years.



2



1



3

- 1 | ■ Designs *Narbonne, Malaga, Kyoto, Cuzco, Fiji* | 📍 Lake Constance, Germany  
 2 | ■ Design *Missouri* | 📍 Valparaíso, Chile  
 3 | ■ Design *Palmarin* | 📍 Bangkok, Thailand

# COLLECTION

Summer Edition.

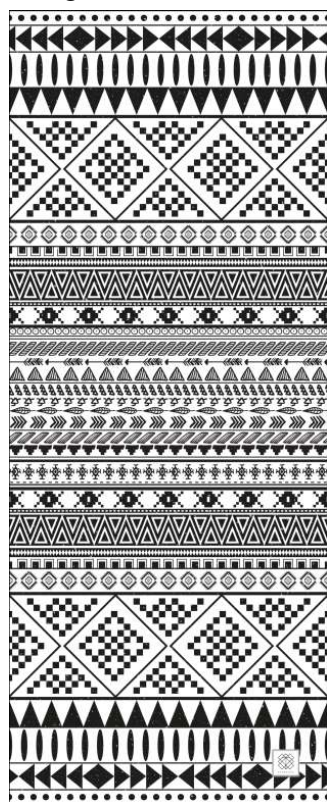
Design *Palmarin*



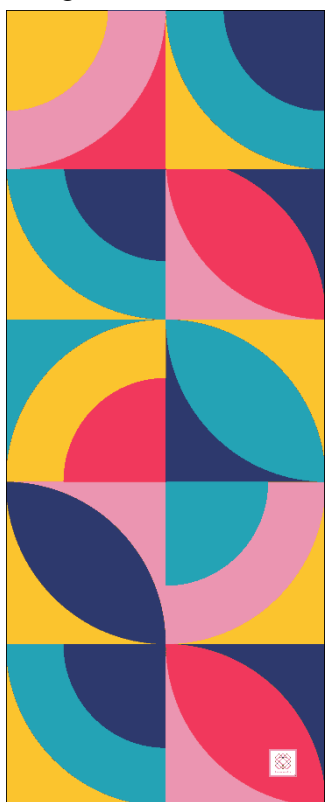
Design *Samarkand*



Design *Cuzco*



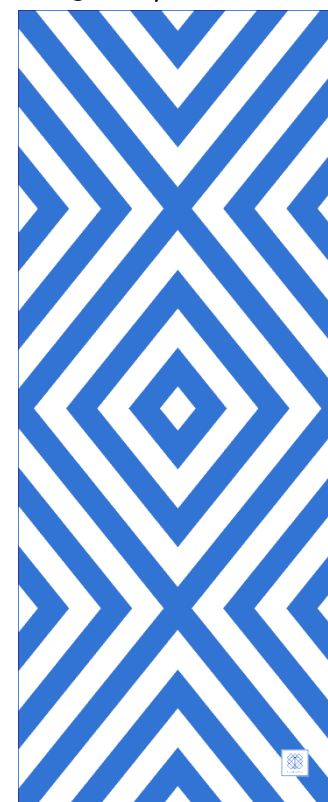
Design *Murano*



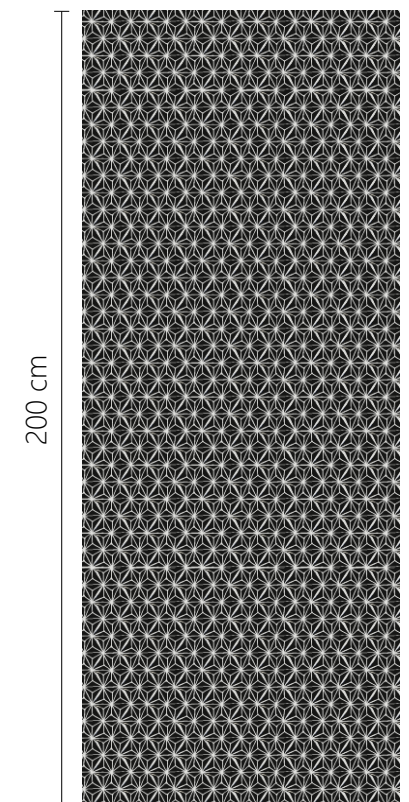
Design *Kyoto*



Design *Acapulco*



Back side



200 cm

80 cm

Design *Iguazu*



Design *Mahe*



Design *Missouri*



Design *Waikiki*



Design *Fiji*



Design *Narbonne*



Bag



30 cm

25 cm

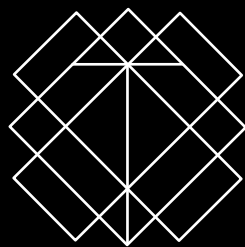
Instagram



Facebook







[www.taimanta.com](http://www.taimanta.com)