



**EMBLM
FINE JEWELRY**

EMBLM

FINE JEWELRY

Founded in 2019 by Emily Landers-Sorensen and Mariko Enkoji-Busch, EMBLM was born out of a desire to create timeless, distinctive fine jewelry that can become treasured heirlooms with a personal significance to the individual wearer. With a commitment to ethical practices, each piece is made-to-order in downtown Los Angeles by a gifted team of artisans.

EMBLM is dedicated to giving back – honoring the planet and all of its inhabitants. In addition to donating a portion of profits from their own designs, EMBLM has established an Artist Partnership Collective – designed to promote creative collaboration between EMBLM and other artists they admire, with a shared goal of giving back.



Earrings

*All earrings are sold separately, please specify if ordering pairs.



Spur Earring
23mm latch

E-SS-SPR
\$134 WS | \$295 MSRP



Mini Spur Earring
15mm latch

E-SS-MSPR
\$119 WS | \$260 MSRP



Baby Spur Earring
10mm latch

E-SS-BBSPR
\$87 WS | \$195 MSRP



Latch Earring
23mm

E-SS-LAT
\$60 WS | \$130 MSRP



Half Latch Earring
15mm

E-SS-HLAT
\$50 WS | \$110 MSRP



Huggie Latch Earring
10mm

E-SS-HUGLAT
\$40 WS | \$90 MSRP



Spur Hoop
11mm inner diameter

E-SS-SPRHP
\$105 WS | \$230 MSRP

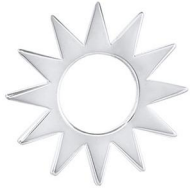


Baby Spur Hoop
8mm inner diameter

E-SS-BBSPRHP
\$91 WS | \$200 MSRP

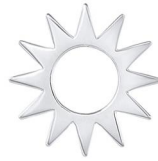
Earring Charms

*All earring charms can be worn with the Huggie Latch, Half Latch, or Latch.



Spur Earring Charm
18mm diameter

EC-SS-SPR
\$74 WS | \$165 MSRP



Mini Spur Earring Charm
15mm diameter

EC-SS-MSPR
\$69 WS | \$150 MSRP



Baby Spur Earring Charm
8mm diameter

EC-SS-BBSPR
\$47 WS | \$105 MSRP



Baby Star Earring Charm
10mm diameter

EC-SS-BBSTR
\$60 WS | \$130 MSRP



Baby Ennead Earring Charm
10mm diameter

EC-SS-BBENN
\$60 WS | \$130 MSRP



Baby Cosmos Earring Charm
10mm diameter

EC-SS-BBCOS
\$60 WS | \$130 MSRP



Baby Compass Earring Charm
10mm diameter

EC-SS-BBCOM
\$60 WS | \$130 MSRP



Baby Choice Earring Charm
10mm diameter

EC-SS-BBCHOICE
\$60 WS | \$130 MSRP

Studs

*All earrings are sold separately, please specify if ordering pairs.



Spur Stud
8mm

E-SS-SPRSTD
\$42 WS | \$90 MSRP



Mini Spur Stud
5mm

E-SS-MSPRSTD
\$37 WS | \$80 MSRP

Pendants

*Chains sold separately.



Spur Pendant
18mm diameter

P-SS-SPR
\$74 WS | \$165 MSRP



Mini Spur Pendant
15mm diameter

P-SS-MSPR
\$69 WS | \$150 MSRP



Baby Spur Pendant
8mm diameter

P-SS-BBSPR
\$47 WS | \$105 MSRP



Evil Eye Pendant
33mm height, 15mm width | lapis
lazuli center

P-SS-EYE
\$180 WS | \$395



Saint Christopher Pendant
25mm diameter | designed by EMBLM
hand carved by Alrik Yuill

P-SS-SNT
\$112 WS | \$245 MSRP

Necklaces



Baby Spur Chain Necklace
sterling silver curb chain
14ky spur + logo tag

14"

N-14Y-SS-BBSPR-14
\$194 WS | \$425 MSRP

16"

N-14Y-SS-BBSPR-16
\$195 WS | \$430 MSRP

18"

N-14Y-SS-BBSPR-18
\$197 WS | \$435 MSRP



Jumbo Ball Necklace
15" | 7mm ball beads

N-SS-JMB

\$119 WS | \$260 MSRP

Rings



Lost Sun Ring

R-SS-TLLS
\$111 WS | \$245 MSRP



Second Sun Ring
black onyx center

R-SS-TLSS
\$158 WS | \$350 MSRP



Signet Ring
R-SS-SIG

\$94 WS | \$205 MSRP
*Old English single letter hand
engraving option—additional \$40.
Please specify letter.*



Twin Crescent Ring

R-SS-TWNCRES
\$89 WS | \$195 MSRP



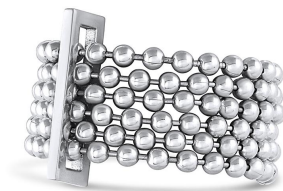
Crescent Ring

R-SS-CRES
\$74 WS | \$165



Orbit Ring

R-SS-ORB
\$105 WS | \$230 MSRP



Ball Chain Ring

R-SS-BALL
\$153 WS | \$335 MSRP



Black Hole Ring
black onyx center

R-SS-BLKHOLE
\$175 WS | \$385 MSRP



Cigar Band
8mm

R-SS-CGR
\$81 WS | \$180 MSRP



Half Cigar Band
4mm

R-SS-HCGR
\$71 WS | \$155 MSRP



Portal Ring

R-SS-PRTL
\$73 WS | \$160 MSRP

Bracelets



Baby Spur Chain Bracelet
7" | sterling silver curb chain
14ky spur + logo tag

B-14Y-SS-BBSPR
\$166 WS | \$365 MSRP



Jumbo Ball Bracelet
7" | 7mm ball beads

B-SS-JMB
\$96 WS | \$210 MSRP

Chains



Ball Chain

2mm

16"

C-SS-BC-16

\$43 WS | \$90 MSRP

18"

C-SS-BC-18

\$44 WS | \$95 MSRP

20"

C-SS-BC-20

\$45 WS | \$100 MSRP



Mini Ball Chain

1.5mm

16"

C-SS-MBC-16

\$38 WS | \$80 MSRP

18"

C-SS-MBC-18

\$39 WS | \$85 MSRP

20"

C-SS-MBC-20

\$40 WS | \$90 MSRP



Curb Chain

2.3mm

16"

C-SS-CC-16

\$51 WS | \$110 MSRP

18"

C-SS-CC-18

\$55 WS | \$120 MSRP

20"

C-SS-CC-20

\$59 WS | \$130 MSRP



Rolo Chain

2mm

16"

C-SS-RC-16

\$47 WS | \$100 MSRP

18"

C-SS-RC-18

\$48 WS | \$105 MSRP

20"

C-SS-RC-20

\$49 WS | \$110 MSRP



Mini Rolo Chain

1.4mm

16"

C-SS-MRC-16

\$41 WS | \$90 MSRP

18"

C-SS-MRC-18

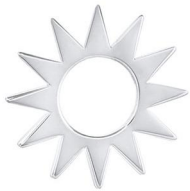
\$42 WS | \$95 MSRP

20"

C-SS-MRC-20

\$43 WS | \$100 MSRP

Pins



Spur Pin
18mm diameter | nickel plated
butterfly back

PIN-SS-SPR
\$72 WS | \$160 MSRP



Mini Spur Pin
15mm diameter | nickel plated
butterfly back

PIN-SS-MSPR
\$71 WS | \$155 MSRP



Baby Spur Pin
8mm diameter | nickel plated
butterfly back

PIN-SS-BBSPR
\$49 WS | \$110 MSRP

Collections

SPUR COLLECTION

Inspired by the beauty of the object and the essence of the word, the Spur Collection was born out West - where the sun meets the sea. This collection of best-sellers continues to stand out wherever EMBLM is sold.

Giving Back

SAINT CHRISTOPHER PENDANT

Alrik Yuill x EBLM

The Saint Christopher Pendant was designed by EBLM and hand carved by notable visual artist, sculptor, and surfer, Alrik Yuill. A portion of EBLM's profits from this piece will be donated to Surfrider Foundation, a non-profit environmental organization that works to protect and preserve the world's oceans.

