



# WASATCH SOFTTRIP®

DIGITAL PRINTING EXCELLENCE



## ELEGANT SIMPLICITY

DIGITAL PRINTING EXCELLENCE

Wasatch is sophisticated software made easy. With its simple setup, intuitive workflow, and powerful print controls, SoftRIP saves you time and money while producing excellent quality color. Whatever your printing goals, Wasatch has a solution for you.

### Straight to Easy

You don't need to be an expert to print like one. Wasatch has the features you need and the simplicity you'll love.

SoftRIP brings together the key settings you need to quickly prepare your images for efficient printing. Size, crop, check color gamut, tile, and more without ever leaving the home screen. With navigation that easy, who needs a map?

SoftRIP gives you the flexibility to prepare jobs for printing individually or as part of a full layout. Arrange images in your layout with automated Smart Nesting and keep track of it all with the Master Queues Manager.

With Wasatch SoftRIP, your workflow really flows.

**EXCELLENT  
COLOR TOOLS**  
for every level  
**OF EXPERTISE**

### EASY TO LEARN. EASY TO USE. EASY TO LOVE!

### Superior Color

SoftRIP is the RIP that color experts choose most. With 16-bit color rendering and our exclusive Precision Stochastic Screens™ halftone method, Wasatch achieves excellent color reproduction with perfectly smooth gradients. With Wasatch, beginners look like pros with easy plug-and-play imaging configurations, and experts have all the tools they need to implement even the most complex color workflows.

### Energize Your Workflow

No matter how large or complex your production environment, SoftRIP has the workflow tools to give you complete control. SoftRIP can manage any print environment, from a single printer to a complex multiple-device production plant.

### Save Time and Money

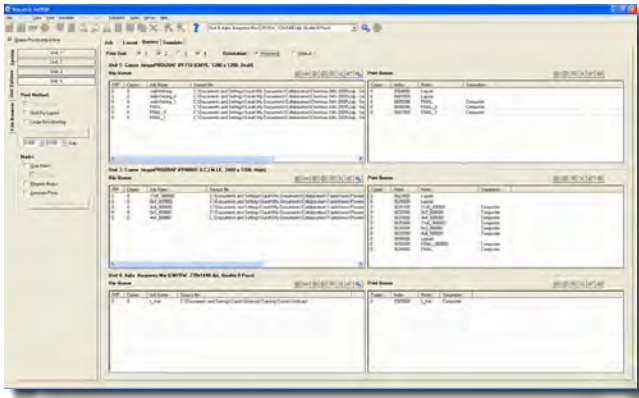
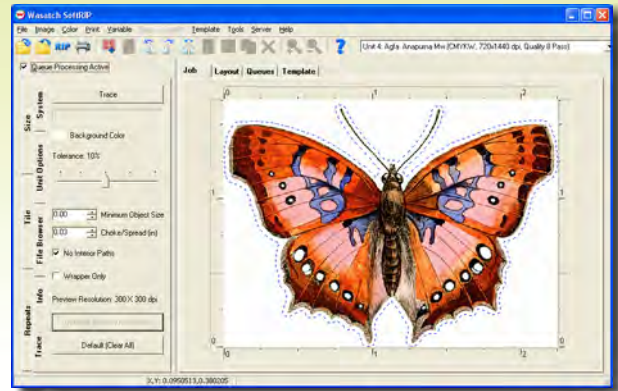
SoftRIP pays for itself quickly in saved time and media. Most RIPs bundled with inkjet printers include only the basic features necessary to drive the printer. Only a quality RIP like SoftRIP gives you the tools you need to save thousands of dollars in media costs over the long haul.



**WASATCH**  
COMPUTER TECHNOLOGY

## WASATCH TRACER

The Wasatch Tracer allows you to create contour cut paths or generate white ink plates directly within Wasatch SoftRIP. With the ability to set a tolerance level, specify a minimum object size, apply a choke or spread, exclude interior paths from being traced, and auto-generate white from traced areas, you can customize a contour path to work for nearly any cutting or white ink situation. Now that's control!



## MORE CONTROL LESS WORK

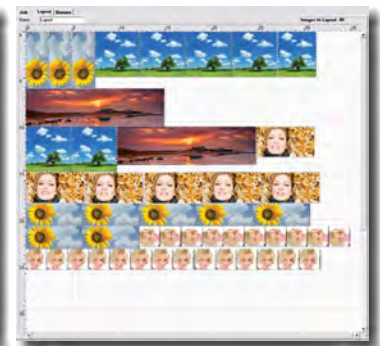
SoftRIP manages any print environment with ease. The Master Queues Manager helps you control the real-time status of every job in your print production workflow. Check processing status, drag-and-drop jobs between print units, and send images to the Layout screen. With the Master Queues Manager, you skip the learning curve and go straight to easy.

## SMART NESTING FOR BIG SAVINGS

Whether you prepare your images in the Layout window or hold single jobs to arrange later, you can use SoftRIP's Smart Nesting to create efficient layouts. Combine RIP'd files with new jobs and even rotate pre-RIP'd images to conserve media while achieving your specific printing objectives. Tightest Fit saves you the most media, while Super Easy-Cut saves the most guillotine trimming time. Our best-of-both option balances media and time savings with an innovative turn-and-trim layout.

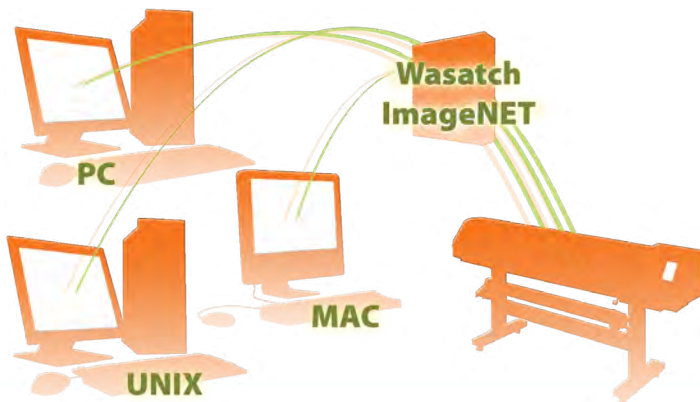
TIGHTEST FIT

SUPER EASY-CUT



Saves the most media

Saves the most time

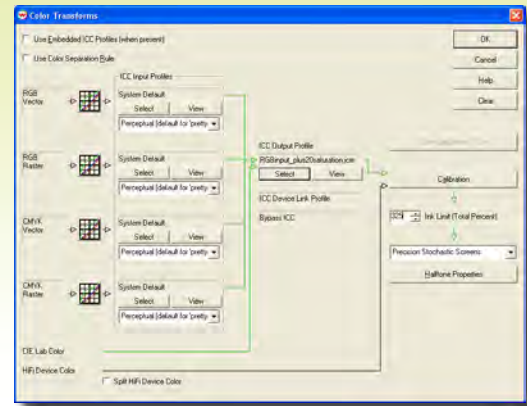


## POWER BEYOND THE RIP STATION

With Wasatch ImageNET™, any PC, Mac, or Unix workstation on your network can interface with SoftRIP quickly and easily. Networked users can submit jobs to the RIP by printing directly from graphic applications or through simple drag-and-drop operations. You can also use Wasatch ImageNET™ with regular web browsing software to check job status, manage queues, and perform automatic file prep functions like scaling, mirroring, and rotating.

## CLARIFY YOUR COLOR

With SoftRIP, ICC color goes from puzzle to piece of cake. The Color Transforms screen straightens out the maze of profiles, halftones, calibrations, and more, showing you exactly how your color goes from file to printed page. Color Transforms gives you easy access to SoftRIP's expert color tools, and when you change selections, the interactive flowchart displays the impact on your overall color process.



## PRECISION STOCHASTIC SCREENS



## OTHER RIP SOFTWARE

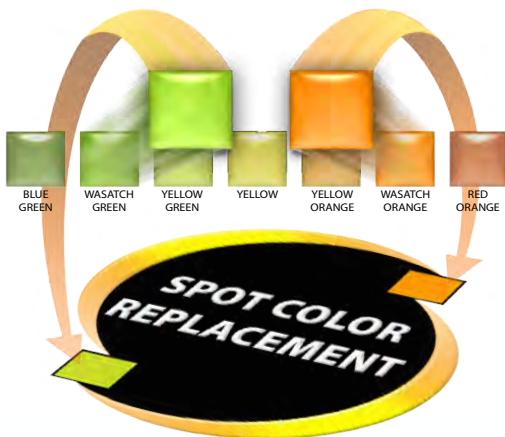
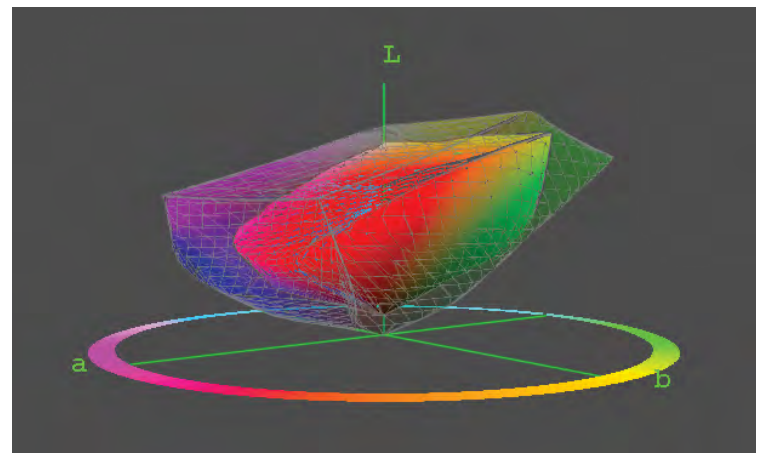


## BETTER QUALITY FASTER SPEED

SoftRIP produces perfectly smooth gradients without a hint of stairstepping. With the industry's first 16-bit color pipeline, and our Precision Stochastic Screens (PSS) halftoning, Wasatch is the RIP leader in producing superior image quality. Plus, since PSS is based on efficient algorithms developed exclusively by Wasatch, it's faster than other RIP methods.

## KNOW MORE BEFORE YOU PRINT

Wasatch SoftRIP's Profile View helps you set customer expectations you know you can meet while reducing wasted ink and media. Simply click on a color and launch the 3D Profile View to see your color plotted against the available gamut for your output device and selected media. You can use this information to communicate color issues with customers and select profiles with desired gamut characteristics.



## MATCH COLORS ON THE SPOT

With SoftRIP, you get the most advanced spot color features available with any RIP. Create your own database of frequently used spot colors by specifying shades using RGB, CMYK, or L\*A\*B\* or by automatically reading a color sample with a handheld colorimeter. You can then use the Color Atlas Generator to take your color matching to the next level, ensuring perfect color matching on your desired media every time.



# DIGITAL PRINTING EXCELLENCE

## TOOLS FOR EVERY LEVEL OF EXPERTISE

Wasatch SoftRIP gives you the perfect combination of easy operation and sophisticated features. New users will be up and running in minutes and printing experts will find the intricate controls and innovative tools necessary to implement even the most complex production and color workflows for unparalleled quality output. Whatever your printing goals, Wasatch has a solution for you.

### Easy Color Tools for Great Out-of-the-Box Color

Thousands of plug-and-play Imaging Configurations for superior out-of-the box color

Easy-to-use Correction Curves to make color adjustments as you would in standard design applications

Gamut warning for colors that cannot be printed with current profiles

Color control in four different input color spaces to get colors that pop and match SWOP in the same job

The Color Transforms flowchart shows you how your color moves from file to printed page

### Simple Workflow Features Get You Up and Running Fast

The ability to drive up to four printers simultaneously allows you to manage any print production environment

SoftRIP puts key file preparation tasks on the main screen so you're ready to RIP fast

Easy workflow options for processing files individually or as part of a complete layout

Smart Nesting to create media- and time-saving layouts automatically

Master Queues Manager for tracking the status of your production in real time

Quick printer setup that requires no previous RIP experience

Interactive real-time preview and detailed image attribute display allow for accurate image adjustments

Cropping feature RIPs only selected areas, instead of entire page, speeding up processing

### Sophisticated Color Management for the Advanced User

Specialty input profiles for RGB and CMYK produce larger density ranges and brighter colors

Intelligent ink limiting to maximize color gamut and profile media with poor ink retention

Precision Stochastic Screens™ halftoning for high quality output with smooth gradients and fast RIP speeds

16-bit rendering reproduces color with the greatest level of intricacy for high definition output

View trapping in Separation Proofs with DCS2 support

Advanced tools for indexed and spot colors, with Spot Color Capture to print colors read by hand-held colorimeters

Non-color support for white ink underlays, overlays, and spot color replacement

### Advanced Workflow Features Help Power Your Production

Wasatch Cost Estimator saves you time and money by giving you an accurate view of your costs before you start production

Hot folders allow you to print directly from any application or operating system

Wasatch ImageNET™ allows you to print directly from any networked Mac, PC, or Unix workstation

Automated image rotation increases Smart Nesting media savings

Direct-to-layout workflow nests new images with RIP'd jobs

Tiling features allow for easy printing of oversized images

Archiving lets you save jobs from print queues

Modified 20 Jun 23