



Barefoot International & Fly High Mfg.  
3879 North Richards Street  
Milwaukee, WI 53212

Phone: 414-964-3668 / 800-932-0685 Fax: 414-964-5767  
E-Mail: [bifh@mindspring.com](mailto:bifh@mindspring.com) Web: [www.fatsac.com](http://www.fatsac.com)

## X-Pole Pylon Installation Instructions

### **WARNING**

#### **FAILURE TO ADHERE TO ALL WARNINGS COULD CAUSE DAMAGE TO EQUIPMENT OR VEHICLE, PERSONAL INJURY OR EVEN DEATH.**

BE AWARE OF YOUR SURROUNDINGS AND ALWAYS STAY CLEAR OF BRIDGES, OVERHANGING TREES, LOW HANGING POWER LINES AND ANY OTHER OBSTACLES • DO NOT TOW THE BOAT WITH THE X-POLE PYLON INSTALLED • DO NOT USE TO PULL TUBES, KITES, PARA SAILORS OR STRANDED BOATS • BE SURE TO CHECK ALL HARDWARE, CLAMPS AND CABLES FOR WEAR AND PROPER INSTALLATION PRIOR TO EACH USE • THERE MUST ALWAYS BE A LOAD ON BOTH SAFETY CABLES TO ENSURE THE PYLON IS RIGID • THIS PRODUCT IS TO BE USED WITH FACTORY INSTALLED 2.5" PYLONS ONLY • MAKE SURE FACTORY INSTALLED PYLON IS IN PROPER WORKING CONDITION

### **WARNING**

THE USE OF THIS PRODUCT INVOLVES INHERENT RISKS OF INJURY OR DEATH. TO REDUCE THESE RISKS THE INDIVIDUAL MUST ALWAYS STAY WITHIN THEIR LIMITS AND AT SPEEDS THAT DO NOT EXCEED THEIR LEVEL OF SKILL. THIS PRODUCT ALLOWS WAKEBOARDERS TO ACHIEVE MORE HEIGHT AND IT IS STRONGLY RECOMMENDED THAT EACH USER TAKES A SLOW APPROACH TO THE WAKE UNTIL THEY FULLY ADJUST TO THE DIFFERENCE IN FEEL AND HOW THE PYLON WORKS.

- 1- Read through all directions and warnings completely before installing this product.**
- Slide the X-Pole completely over the factory mounted pylon.
- Pull the sling through the boat's trailer eye hook with equal lengths on either side of the bow. Wrap the sling up and around the bow and rest it in place. (Figure 1)
- Clip the carabineer at the end of the guy cable assembly through both ends of the sling. Be sure the cables are not twisted prior to doing this.
- Open the handle on the over-center buckle. Pull any slack out of the *top cable* and adjust it so the loop at the end is approximately 1½"-2" in diameter (Figure 2). When the cable is snug, tighten the set screws for this cable with the provided allen wrench. Make sure you tighten them until they are extremely tight.
- Close the handle on the over-center buckle which will load tension onto the pylon, pulling it slightly forward and making it rigid. (Figure 1)

7- Pull the slack out of the *bottom cable* so it is snug. Make sure the cable loop is approximately 1½”-2” in diameter (Figure 2). Tighten the set screws with the provided allen wrench. Be sure you tighten them until they are extremely tight. Both cables should now have approximately the same amount of tension.

8- Slide the cable pad over the cables and cable clamp, tuck any excess cable into the pad. (Figure 1)

**NOTE- Use the ski tow attached to the pylon to ski from the factory installed pylon height. (Figure 6)**

FIG. 1



FIG. 2

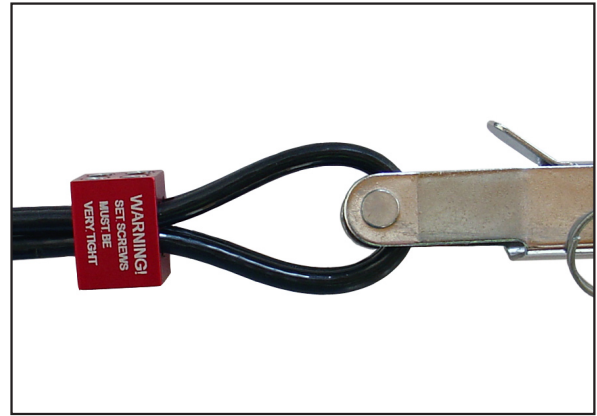


FIG. 3

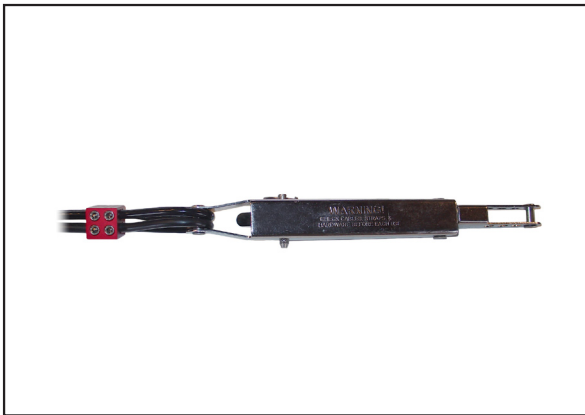


FIG. 4

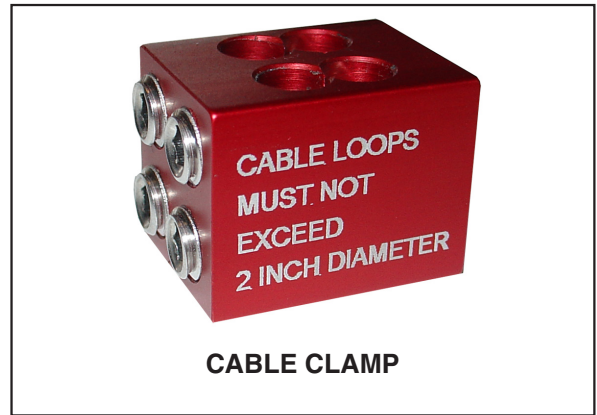


FIG. 5

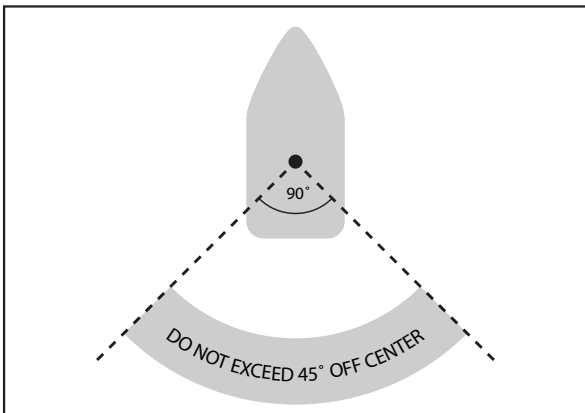


FIG. 6

