

LULANI

Faucet Co

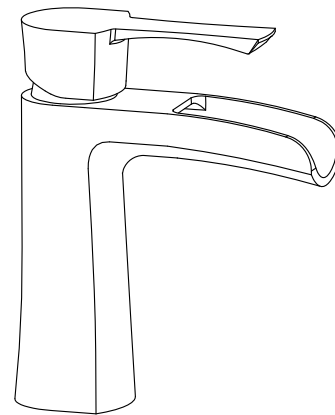
Installation Instructions

BA-460-01

Single Handle Bathroom Faucet

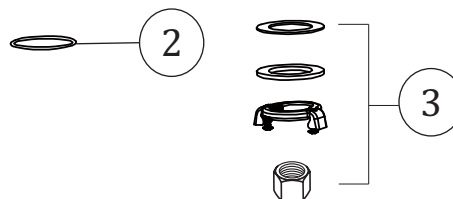
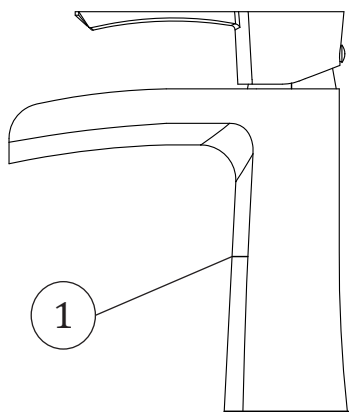
Thank you for selecting Lulani.

To ensure that your installation proceeds smoothly, please read these instructions carefully before you begin.



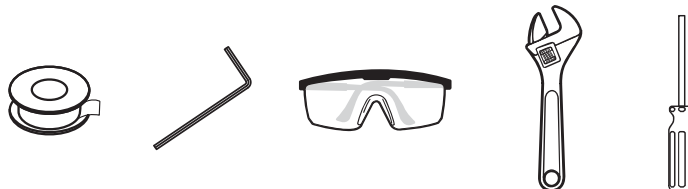
Parts Included

1. Faucet
2. Above sink hardware: O-ring
3. Below sink hardware: rubber washer, metal washer, mounting nut



Recommended Tools (not included)

- | | |
|-------------------------|---------------------|
| 1. Adjustable Wrench | 6. Measuring Tape |
| 2. Phillips Screwdriver | 7. Silicone Sealant |
| 3. Safety Goggles | 8. Channel Locks |
| 4. Flashlight | 9. Allen Key |
| 5. Plumber's Tape | |



Caution: Tips for removal of old faucet

Always turn off the water supply before removing the existing faucet or replacing any part of the faucet. Open the faucet handle to relieve water pressure and ensure that water is completely shut off.

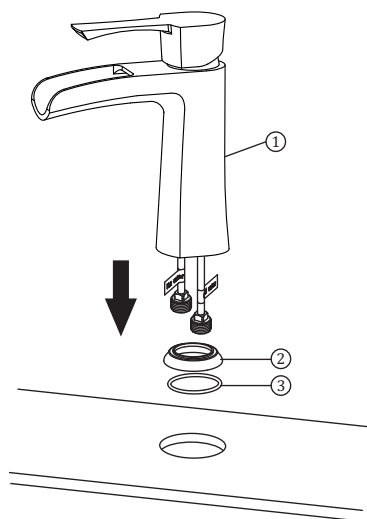
Maintenance

Your new faucet is designed for years of trouble-free performance. Keep it looking new by cleaning it periodically with a soft cloth. Avoid abrasive cleaners, steel wool, and harsh chemicals as these will dull the finish and void your warranty.

Faucet Installation

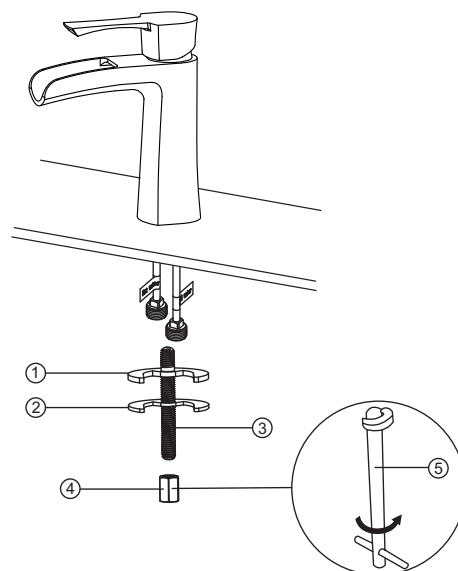
Step 1

Position the faucet (1), base (1), and o-ring (2), on the installation surface.



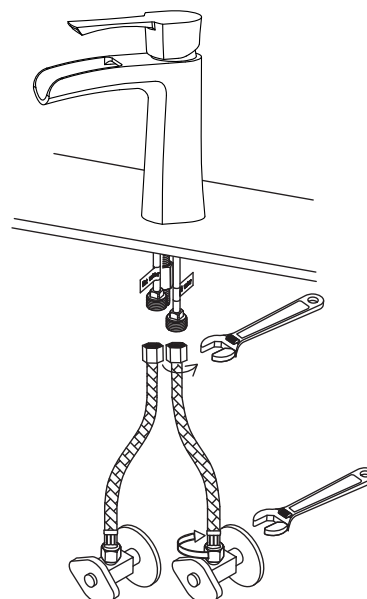
Step 2

Secure the faucet with the fixing kit [(1) (2) (3) (4)] and tighten the lock nut with a wrench (5).



Step 3

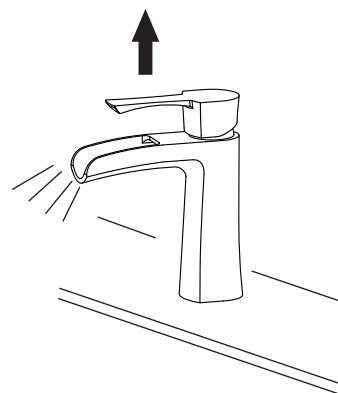
Connect the hose lines to the water supply valve (not included) and tubes. Tighten with an adjustable wrench. Do not over tighten.



Testing

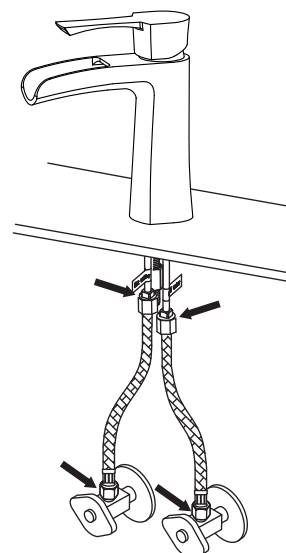
Step 1

Turn the faucet handle all the way on, turn on the hot and cold water supply and flush water lines for one minute. This will help to flush out any possible debris.



Step 2

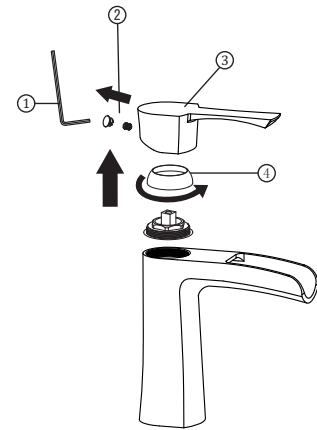
Check all connections (show with arrows in the image) for leaks. Re-tighten if necessary.



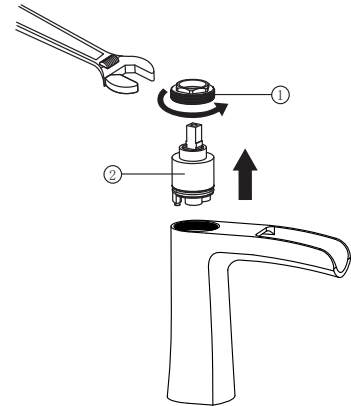
Maintenance

If the faucet leaks from the handle or drips from the spout, replace the cartridge using the following steps:

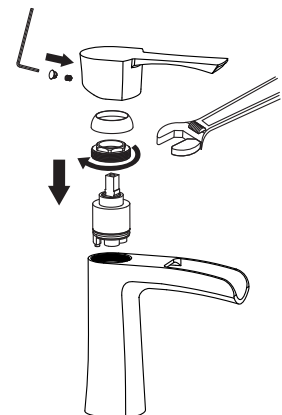
1. Disassemble the screw (2) with an allen key (1), take out the handle (3), and the trim cap (4).



2. Unscrew the cartridge lock nut (1) with an adjustable wrench, and take out the old cartridge (2).



3. Place a new cartridge in the cartridge seat, then unscrew the cartridge lock nut and assemble the handle by securing the screws.



For troubleshooting questions or concerns, please reference the Owner's Manual or visit our website at www.lulani.com.

We value your opinion! Don't forget to leave us a review.