

LULANI

Faucet Co

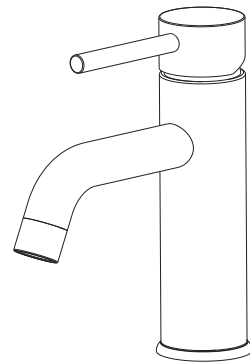
Installation Instructions

BA-400-03

Single Handle Bathroom Faucet

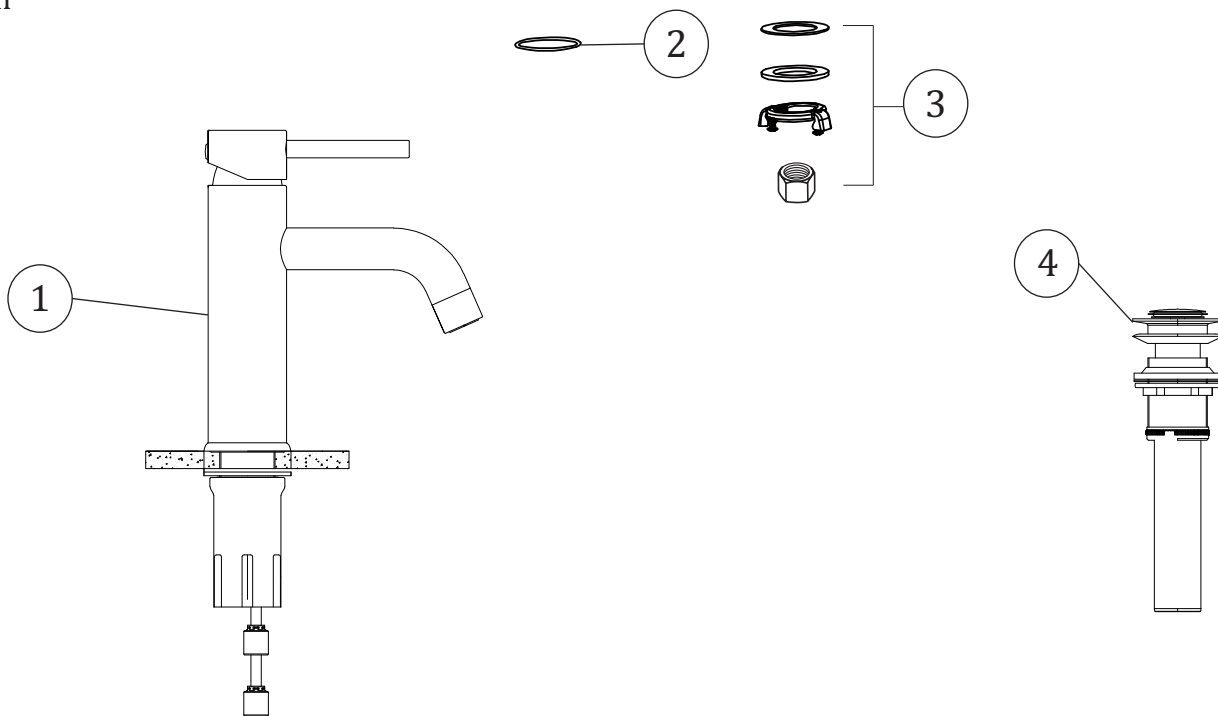
Thank you for selecting Lulani.

To ensure that your installation proceeds smoothly, please read these instructions carefully before you begin.



Parts Included

1. Faucet
2. Above sink hardware: O-ring
3. Below sink hardware: rubber washer, metal washer, mounting nut
4. Pop-up drain



Recommended Tools (not included)

1. Adjustable Wrench
2. Phillips Screwdriver
3. Safety Goggles
4. Flashlight
5. Plumber's Tape
6. Measuring Tape
7. Silicone Sealant
8. Channel Locks
9. Allen Key



Caution: Tips for removal of old faucet

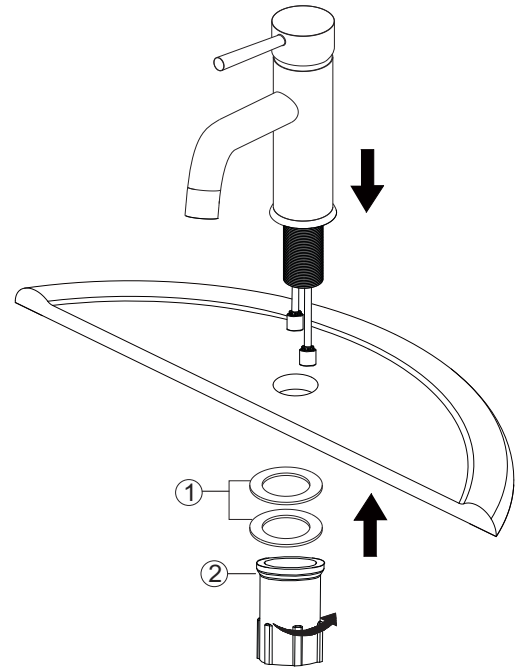
Always turn off the water supply before removing the existing faucet or replacing any part of the faucet. Open the faucet handle to relieve water pressure and ensure that water is completely shut off.

Maintenance

Your new faucet is designed for years of trouble-free performance. Keep it looking new by cleaning it periodically with a soft cloth. Avoid abrasive cleaners, steel wool, and harsh chemicals as these will dull the finish and void your warranty.

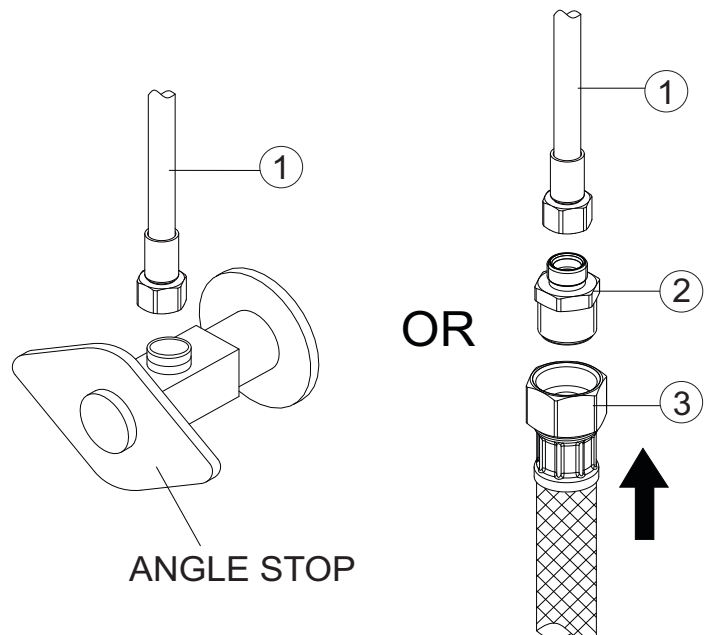
Step 1

Connect the hot and cold water supply lines (1) to the angle stop (not included). Or attach hot and cold adaptors (2, not included) to supply lines, then use 1/2" I. P. S. faucet connections (3, not included). Use wrenches to tighten connections. Do not over tighten.



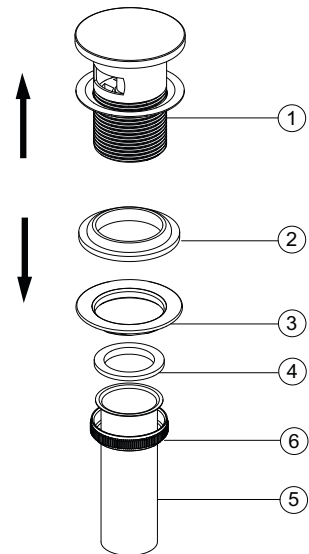
Step 2

Remove the old pop-up drain and clear up the hole in preparations. Unscrew the nut (6) from the pop-up body (1), move over the tail pipe (5) and washer (4), then unscrew the coupling nut (3) and remove the washers (2).



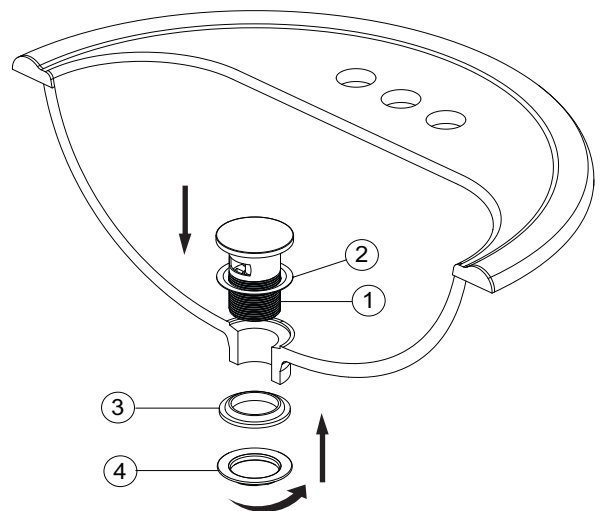
Step 3

Remove the old pop-up drain and clear up the hole in preparation for the new pop-up drain installation. Unscrew the nut (6) from the pop-up body (1), move over the tail pipe (5) and washer (4), then unscrew the coupling nut (3) and remove the washers (2).



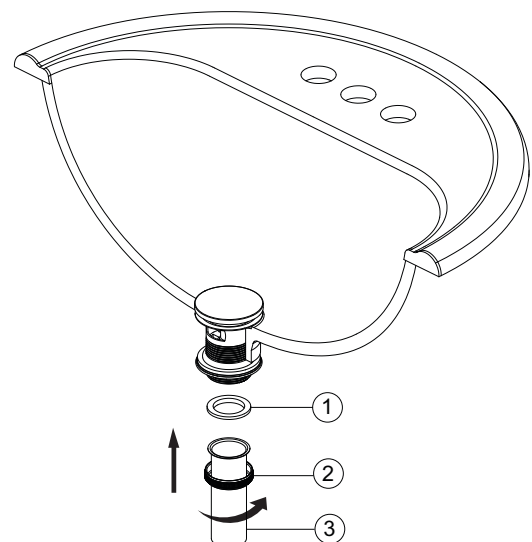
Step 4

Place the washer (2) underneath the flange of the pop-up body (1). Slide the pop-up body (1) down through the drain hole on the vessel or basin. From the underside, slide the washer (3) against the bottom of the vessel or basin, thread on the coupling nut (4) and tighten. Do not over tighten.



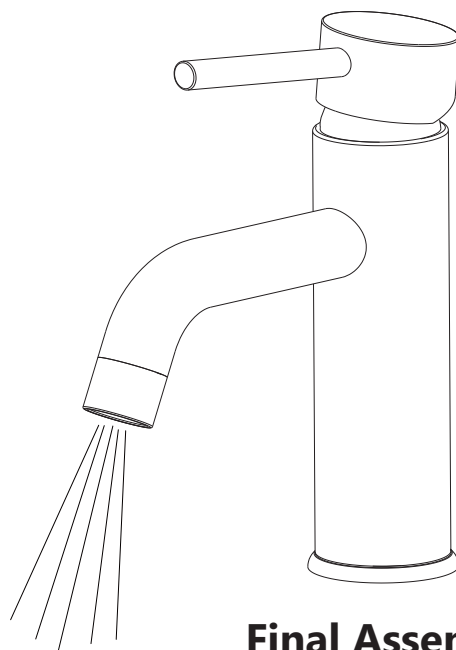
Step 5

Slide the nut (2) over the tail pipe (3). Place the washer (1) on to the nut and tighten. Do not over tighten.

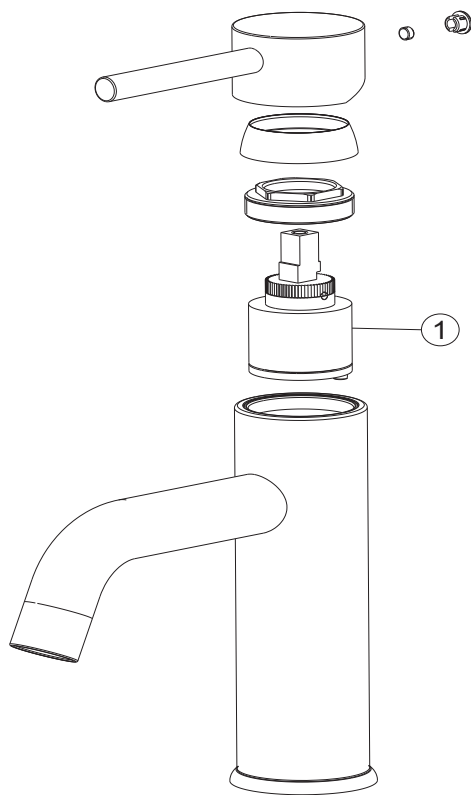


Step 6

Important: After installation is complete, turn on the water supply and allow both hot and cold water to run for at least one minute each. While water is running, check for leaks



Final Assembly



Maintenance: If faucet leaks from spout outlet - Shut off water supply and replace cartridge (1).

Note: Install cartridge (1) correctly for proper handle rotation.

For troubleshooting questions or concerns, please reference the Owner's Manual or visit our website at www.lulani.com.

We value your opinion! Don't forget to leave us a review.