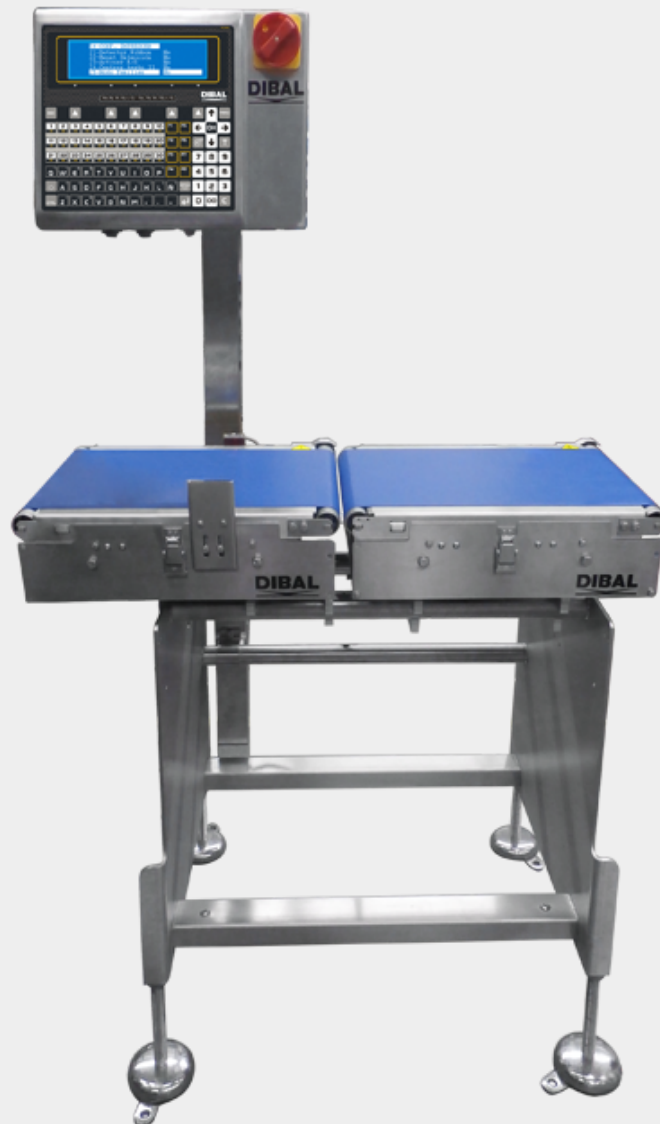




# AUTOMATIC CHECKWEIGHERS W-4000 SERIES

Automatic weight control equipment for production lines.



# INFORMATION



**DYNAMIC OR  
STATIC  
WEIGHING**



**EJECTION  
OPTIONAL**



**UP TO  
9 OUTPUTS**

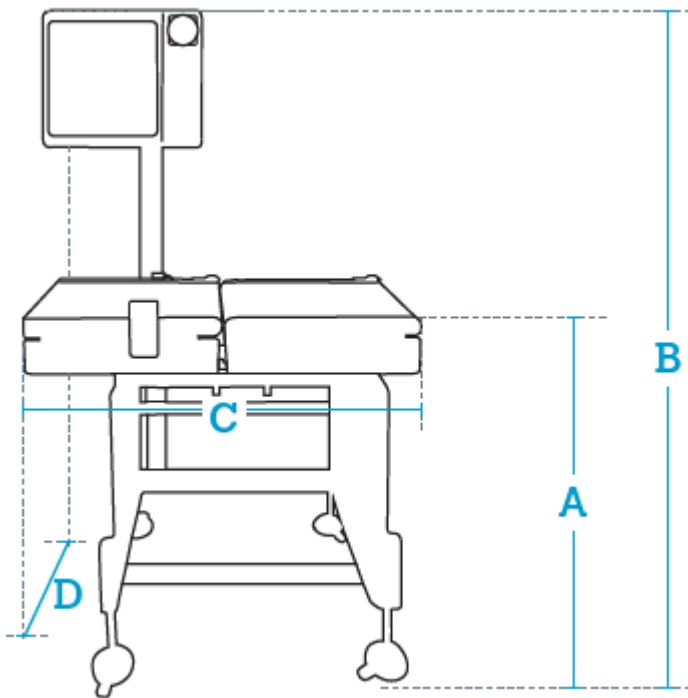


**8,000 PLUS  
MEMORY**



**ETHERNET**

Dibal W-4000 automatic checkweigher checks, without stopping the production line, that the products' weight is within a defined weight range. With up to 8 optional rejectors, this equipment can classify products depending on their weight.



## Data in mm

<b>A</b>	820 - 970 (adjustable legs)
<b>B</b>	1,450 - 1,600 (adjustable legs)
<b>C</b>	850 (with L400 conveyors)*
<b>D</b>	650 (conveyors width + console width. For W280 conveyors)**

\* These measurements correspond to the sum of the infeed and weighing conveyors. For other sizes, contact us.

\*\* For other sizes, contact us.

## OUTSTANDING FUNCTIONS

- **Discrimination by weight control.**
- **Weight grading.**
- **Weight filling.**
- **Orders management.**
- **Piece counting.**
- **Inventory.**
- **Generic traceability.**
- **24 input/Output PLC.**

## WEIGHING

- **Type of weighing:**
  - Dynamic or static.
- **Ranges depending on the dimensions of the weighing conveyor:**
  - 6 kg / 2 g or 10 kg / 5 g with conveyor of up to L400 x W400 mm.
  - 15 kg / 5 g, 20 kg / 10 g, 30 kg / 10 g, 40 kg / 20 g or 60 kg / 20 g with conveyor of up to L600 x W500 mm.
  - 3 kg / 1 g or others, contact us.

## REJECTION/GRADING SYSTEM (OPTIONAL)\*

- **Rejection/grading system type:**
  - “Air-jet®”.
  - Pneumatic piston.
  - Rotating blade.
  - Folding conveyor.
- **Number of rejectors:**
  - From 2 to 8.
- **Position of the rejectors:**
  - They can be located on the same side or opposite sides.

*\* All the rejection/grading systems (pneumatic piston, “Air-jet®”, etc.) depend on the type of product/packaging, required speed, collection system, etc.; please always check with Dibal.*

## CONSTRUCTION

- **Structure**
  - AISI 304 stainless steel and anodized aluminium.
- **Belts:**
  - Material and characteristics: Polyurethane, rigid or elastic depending on the equipment range. With FDA approval.
- **Console:**
  - Material: stainless steel.
  - “Qwerty” keypad and graphic backlit LCD display.

## COMMUNICATIONS TO PC

- Ethernet TCP/IP.
- RS-232.

## PC SOFTWARE

- **RMS:** For equipment configuration, production data management and back up (LBS).
- **DCS:** For production data management.
- **Integration tools:** See section on software.

## POWER SUPPLY & COMPRESSED AIR

- **Electrical:** 230 V & 50 Hz; 115 V & 60 Hz.
- **Air:** max. 150l/min (at 5-8 bar) (if rejection/grading system is included).

## POSSIBLE INTEGRATION WITH OTHER EQUIPMENT

- Dibal LS-4000 automatic weigh-price labeller.
- Aligner.
- Misaligner.
- 90° deflector.

## CUSTOM SOLUTIONS

At Dibal, we have professionals who work closely with our clients to design, develop and produce [customised solutions](#) in accordance with their specific needs. **Consult us!**

# MODELS

---

---

## W-4200/350 (NO EJECTORS)

- 1 infeed and 1 weighing L350 x W200 mm conveyor.
- For products of up to L250 x W200 mm and up to 3 kg (in dynamic weighing). Up to L300 x W200 mm in static weighing.
- Without rejection/grading system (check for options).
- **Performance\*:** 120 packages/minute (with products of up to L150 mm and 1 kg).

*\* Maximum performance will depend on the size, weight and morphology of the product, as well as on the regularity of the infeed of the products, and the rejection/grading system.*

---

## W-4200/400 (NO EJECTORS)

- 1 infeed and 1 weighing L400 x W280 mm conveyor.

- For products of up to L300 x W280 mm and up to 6 kg (in dynamic weighing). Up to L350 x W280 mm in static weighing.
- Without rejection/grading system (check for options).
- **Performance\***: 80 packages/minute (with products of up to L200 mm and 2 kg).

*\* Maximum performance will depend on the size, weight and morphology of the product, as well as on the regularity of the infeed of the products, and the rejection/grading system.*

---

## W-4200/600 (NO EJECTORS)

- 1 infeed and 1 weighing L600 x W400 mm conveyor.
- For products of up to L500 x W400 mm and up to 15 kg (in dynamic weighing). Up to L550 x W400 mm in static weighing.
- Without rejection/grading system (check for options).
- **Performance\***: 70 packages/minute (with products of up to L350 mm and 2 kg).

*\* Maximum performance will depend on the size, weight and morphology of the product, as well as on the regularity of the infeed of the products, and the rejection/grading system.*

## OPTIONS

---

OPTION	CHARACTERISTICS	REF.
<b>Ejection by 1 pneumatic piston (for model W-4200/400)</b>	<p>1 rejection/grading L600 x W280 mm conveyor with 1 pneumatic piston.*</p> <p>For products of up to L200 x W280 mm and up to 6 kg (in dynamic weighing).</p> <p>Performance**: 80 packages/minute (with products of up to L200 mm and 2 kg).</p> <p>For models W-4200/350 and W-4200/600, contact us.</p> <p><i>* All the rejection/grading systems (pneumatic piston, "Air-jet®", etc.) depend on the type of product/packaging, required speed, collection system, etc.; please always check with Dibal.</i></p> <p><i>** Maximum performance will depend on the size, weight and morphology of the product, as well as on the regularity of the infeed of the products, and the rejection/grading system.</i></p>	Contact us

OPTION	CHARACTERISTICS	REF.
<b>Ejection by 2 pneumatic pistons (for model W-4200/400)</b>	<p>1 rejection/grading L1,000 x W280 mm conveyor with 2 pneumatic pistons.*</p> <p>For products of up to L200 x W280 mm and up to 6 kg (in dynamic weighing).</p> <p>Performance**: 80 packages/minute (with products of up to L200 mm and 2 kg).</p> <p>For models W-4200/350 and W-4200/600, contact us.</p> <p><i>* All the rejection/grading systems (pneumatic piston, "Air-jet®", etc.) depend on the type of product/packaging, required speed, collection system, etc.; please always check with Dibal.</i></p> <p><i>** Maximum performance will depend on the size, weight and morphology of the product, as well as on the regularity of the infeed of the products, and the rejection/grading system.</i></p>	Contact us
<b>Other rejection/grading systems (by "Air-jet®", rotating blade or folding conveyor)</b>	<p>Depending on the type of product/packaging, required speed, collection system, etc., a rejection/grading system other than piston type may be required.</p>	Contact us
<b>L350 x W200 mm separation conveyor</b>	For model W-4200/350.	Contact us
<b>L400 x W280 mm separation conveyor</b>	For model W-4200/400.	Contact us
<b>L600 x W280 mm conveyor (to replace L400 x W280 mm conveyor)</b>	For model W-4200/400.	Contact us
<b>L800 x W280 mm conveyor (to replace L400 x W280 mm conveyor)</b>	For model W-4200/400.	Contact us
<b>L600 x W400 mm separation conveyor</b>	For model W-4200/600.	Contact us
<b>L400 x W400 mm conveyor (to replace L600 x W400 mm conveyor)</b>	For model W-4200/600.	Contact us

OPTION	CHARACTERISTICS	REF.
<b>L800 x W400 mm conveyor (to replace L600 x W400 mm conveyor)</b>	For model W-4200/600.	Contact us
<b>Split belt</b>	For transparent packs or irregular shape/cylindrical products.	Contact us
<b>Vertical detector on arch</b>	For transparent packs or irregular shape products. Infeed conveyor with split belt necessary.	Contact us
<b>Container for rejects</b>	Consult us.	Contact us
<b>Right to left operation</b>	standard operation: from left to right.	Contact us
<b>IP65 protection kit</b>	Protected engines, bearings with lock, packaging gland, special load cell and heated detector.	Contact us
<b>DIS software</b>	Equipment configuration and production data management. (See section on software).	Contact us
<b>RMS Software</b>	Equipment configuration, production data management and back up (LBS). (See section on software).	7340R1U3 / 7340RNU3
<b>DCS Software</b>	Production data management. (See section on software).	7340C0U3 / 7340CNU3
<b>Wi-Fi</b>	Wireless communication.	Contact us
<b>Packed in phytosanitary wood case</b>	Necessary depending on the destination.	PEEC080F

## ACCESSORIES



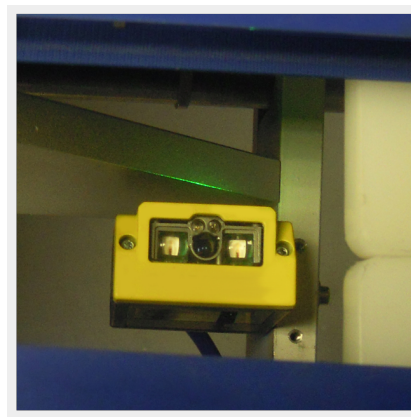
### **MOTORISED CONVEYOR**

Infeed/output L1,000 x W280 mm conveyor, with smooth belt.



### **DIBAL VISION ARTIFICIAL VISION CAMERA**

Contact us about applications.



### **BARCODE READERS**

Contact us about applications.



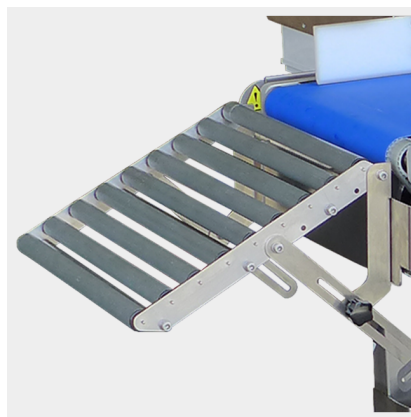
### **ROLLERS CONVEYOR**

Rollers conveyor for transporting or accumulating products.



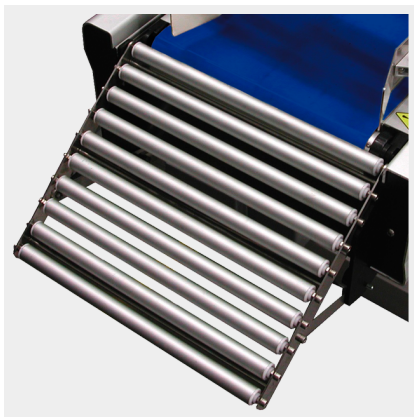
### **ROTATING TABLE**

To collect wrapped and/or labelled products.



### **W200 MM EXIT RAMP**

Non-motorised PVC rollers for W200 mm conveyors.



### **W280 MM EXIT RAMP**

Non-motorised PVC rollers for



### **W400 MM EXIT RAMP**

Non-motorised PVC rollers for



### **EXIT RAMP FOR EJECTED**

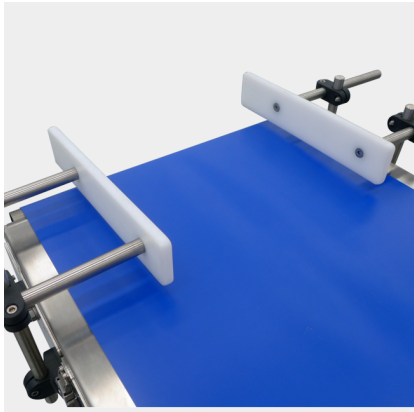


W280 mm conveyors.

W400 mm conveyors.

## PRODUCTS

Ramp for rejection/grading system.



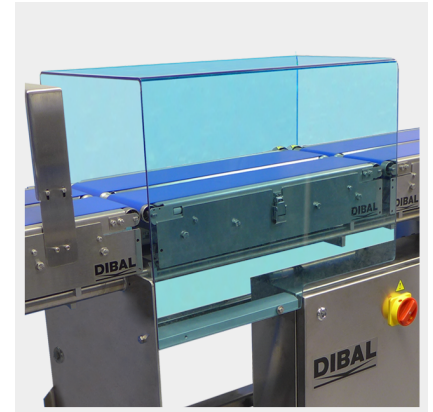
### PRODUCT GUIDING SYSTEM IN INFEED CONVEYOR (STANDARD)

For special guides, contact us.



### PRODUCT TURNING DEVICE

To change the position or orientation of the products.



### POLYCARBONATE PROTECTOR FOR WEIGHING CONVEYOR

To avoid external disturbances during the weighing process.



### 4 WHEELS WITH BRAKES

stud included.



### 24V VISUAL AND AUDIBLE ALARM



Astintze, 26  
48160 Derio (Vizcaya) Spain  
**T.** (+34) 94 452 15 10  
**E.** [dibal@dibal.com](mailto:dibal@dibal.com)