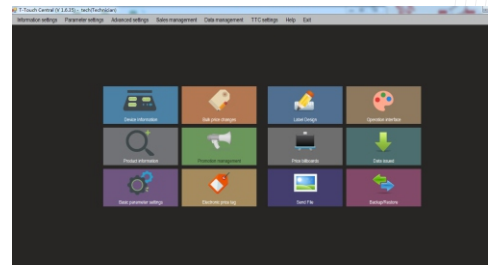


PE10 Series Label Printing Scales

General Specifications

- Display 10" colour touch screen operator display(1280x800)
7" colour customer display (800x480)
- H/V 16:9
- Touch screen Resistive touch screen
- Capacities 6kg/15kg;15kg/30kg
- Max. Divisions 2x3,000e
- Pan size 280x385mm
- Housing ABS plastic
- Operate Temp 0°C~+40°C
- Power In put : AC 100~240V,50/60Hz



T-Touch Central

- Standard TOS II embedded Operating System(Linux)
- CPU:A9 dual core
- Memory:RAM:2G; Flash:8G
- Detachable pole can be adjusted to different enviroment
- Stainless steel pan
- Single labeling and Pre-Pack mode operation
- Sales reports management
- Customer display allows playing image advertisements, product pictures and video
- Multi-language selection
- Multi-weighing units selection
- TTC Back Office Software Management allows updating products information, Creating customized print format, UI(operator interface) ,report management, data import&export,etc.
- Cassette type thermal printer supports label printing
- Max label width:60mm; printing speed:100mm/s; Printer head life:150km
- 2xUSB2.0; 2xRS232;1xRJ45;1xRJ11
- Optional WIFI communication
- OIML approval form DANAK (approval no.0200-NAWI-03408)

PE10 Series Label Printing Scales

Model Name	Capacity	Readability	Division	Approx. weight	Approval
PE10-15-15K-MR	6kg/15kg	2g/5g	2x3,000e	10kg	CE, OIML,NTEP
PE10-15-30K-MR	15kg/30kg	5g/10g	2x3,000e	10kg	CE, OIML,NTEP

Options



Dimensions(mm)

