



HIGH SPEED AUTOMATIC LABELLERS LS-4000+ SERIES

Automatic high speed equipment with dynamic weigh for labelling of fix or variable weight and price.



INFORMATION



DYNAMIC OR
STATIC
WEIGHING



LABEL PRINTER
3-4"



LABELLING
IN MULTIPLE
POSITIONS



8,000 PLUS
MEMORY



TOUCH SCREEN
CONSOLE
OPTIONAL

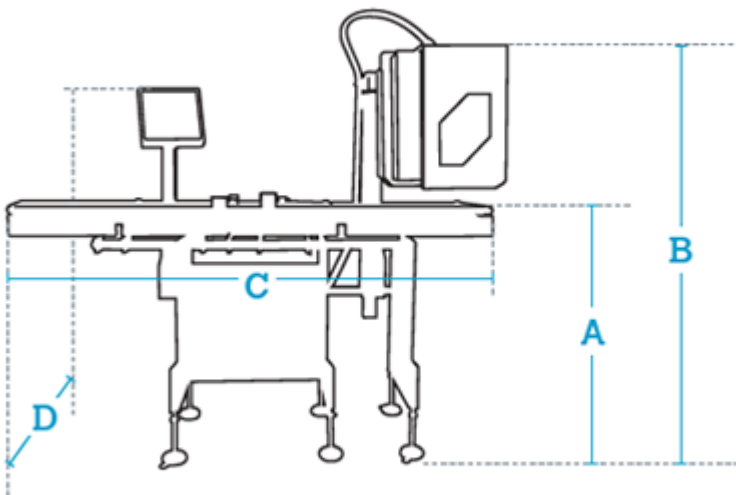


ETHERNET



METROLOGICAL
VERIFICATION
OPTIONAL (EU)

Dibal LS-4000+ automatic high speed weigh-price labeller allows the labelling of articles with fix or variable weight and price information, without stopping the production line due to dynamic weighing. For top, bottom, side, front, rear or on corner automatic labelling. It allows up to two simultaneous printheads (top + top or top + bottom).



Data in mm

| | |
|---|---------------------------------|
| A | 820 - 970 (adjustable legs) |
| B | 1,485 - 1,895 (adjustable legs) |

C 1,970 (with L400-L400-L400-L600 conveyors)*

D 630 (conveyors width + console width. For W280 conveyors)**

* These measurements correspond to the sum of the separation, infeed, weighing and labelling conveyors. For other sizes, contact us.

** For other sizes, contact us.

OUTSTANDING FUNCTIONS

- **Labelling of fix/variable weight/price.**
- **Discrimination by weight checking.**
- **Orders management.**
- **Labelling of totals.**
- **Generic traceability on label.**
- **Adapted to comply with EU Regulation 1169/2011 referring to food information.**
- **Barcodes:**
 - EAN-8, EAN-13, EAN-128, CODE 128, ITF-14, GS1 Datamatrix and GS1 Databar (up to 4 codes per label).

WEIGHING

- **Weighing type:**
 - Dynamic or static.
- **Ranges depending on the dimensions of the weighing conveyor:**
 - 6 kg / 2 g or 10 kg / 5 g with conveyor of up to L400 x W400 mm.
 - 15 kg / 5 g, 20 kg / 10 g, 30 kg / 10 g, 40 kg / 20 g or 60 kg / 20 g with conveyor of up to L600 x W500 mm.
 - 3 kg / 1 g or other, contact us.

LABELLING SYSTEM

- **Printing type:**
 - Direct Thermal (DT) or Thermal Transfer (TT).
- **Printhead:**
 - Long-lasting 3" or 4".
- **Resolution:**
 - 8 dots/mm.
- **Label applicator type:**
 - Top labeller: "Air-jet®" (AA) or pneumatic piston.
 - Bottom labeller: by contact.
 - Side, front, rear or on corner (L) labeller: pneumatic piston.
- **Position of the label applicator:**
 - Top, bottom, side, front, rear or on corner (L) labelling.

LABELS

- **Dimensions depending on the position of the label applicator and the inches of the printhead:**
 - Top, side, front, rear or on corner label: from W30 x L35 mm, up to W80 x L100 mm (3"). Up to W102 x L150 mm (4").
 - Bottom label: from W30 x L55 mm, up to W80 x L100 mm (3"). Up to W102 x L150 mm (4").

CONSTRUCTION

- **Structure:**
 - AISI 304 stainless steel and anodized aluminium.
- **Belts:**
 - Material and characteristics: Polyurethane, rigid or elastic depending on the equipment range. With FDA approval.
- **Console:**
 - Material: stainless steel.
 - "Qwerty" keypad and backlit graphic LCD display.
 - 15" TFT touch screen, optional.
- **Height of top labeller regulated from console.**

COMMUNICATION TO PC

- **Ethernet TCP/IP.**
- **RS-232.**

PC SOFTWARE

- **RMS:** For equipment configuration, production data management and back up (LBS).
- **DLD:** For graphic design of labels.
- **Integration tools:** See section on software.

POWER SUPPLY & COMPRESSED AIR

- **Electrical:** 230 V/50 Hz; 115 V/60 Hz.
- **Air:** max. 150 l/min (at 5-8 bar).

POSSIBLE INTEGRATION WITH OTHER EQUIPMENT

- **Dibal LP-3000 manual weigh-price labeller.**
- **Dibal GS-3000 batch collector (+ LP-3000).**
- **Aligner.**
- **Misaligner.**
- **90° deflector.**
- **Dibal MD-5000 metal detector.**
- **X ray inspection systems.**

CUSTOM SOLUTIONS

At Dibal, we have professionals who work closely with our clients to design, develop and produce [customised solutions](#) in accordance with their specific needs. **Consult us!**

MODELS

LS-4430+/350

- 1 separation, 1 infeed and 1 weighing L350 x W200 mm conveyor, and 1 labelling L600 x W200 mm conveyor.
- For products of up to L250 x W200 mm, and up to 3 kg (in dynamic weighing). Up to L300 x W200 mm in static weighing.
- 1 top labeller, direct thermal printing, 3" printhead and "Air-Jet®".
- **Performance***: 140 labels/minute (with labels of W60 x L60 mm, and products of up to L100 mm, and 1 kg). In MID conditions (M).

** Maximum performance will depend on the size, weight and morphology of the product, as well as on the regularity of the infeed of the products, dimensions and characteristics of the label, and MID conditions (M).*

LS-4430+/400

- 1 separation, 1 infeed and 1 weighing L400 x W280 mm conveyor, and 1 labelling L600 x W280 mm conveyor.
- For products of up to L300 x W280 mm, and up to 6 kg (in dynamic weighing). Up to L350 x W280 mm in static weighing.
- 1 top labeller, direct thermal printing, 3" printhead and "Air-Jet®".
- **Performance***: 150 labels/minute (with labels of W60 x L60 mm, and products of up to L150 mm and 2 kg). In MID conditions (M).

** Maximum performance will depend on the size, weight and morphology of the product, as well as on the regularity of the infeed of the products, dimensions and characteristics of the label, and MID conditions (M).*

LS-4430+/600

- 1 separation, 1 infeed, 1 weighing and 1 labelling L600 x W400 mm conveyor.
- For products of up to L500 x W400 mm, and up to 15 kg (in dynamic weighing). Up to L550 x W400 mm in static weighing.

- 1 top labeller, direct thermal printing, 3" printhead and "Air-Jet®".
- **Performance***: 100 labels/minute (with labels of W60 x L60 mm, and products of up to L350 mm and 2 kg). In MID conditions (M).

* Maximum performance will depend on the size, weight and morphology of the product, as well as on the regularity of the infeed of the products, dimensions and characteristics of the label, and MID conditions (M).

OPTIONS

| OPTION | CHARACTERISTICS | REF. |
|--|--|------------|
| Touch screen console | TFT 15". | Contact us |
| 4" printhead | Labels up to W102 x L150 mm. | Contact us |
| 12 dots/mm resolution | | Contact us |
| Thermal transfer printing | For 3" or 4" printhead. | Contact us |
| 1 pneumatic piston applicator (to replace the "Air-jet®") | | Contact us |
| Extra piston kit (in addition to the chosen applicator) | For the application of labels of different sizes, an additional piston may be required. Interchangeable with the chosen applicator. | Contact us |
| Bottom labeller (to replace the top labeller) | Label application by contact, 3" printhead and direct thermal printing. Label dimensions: from W30 x L55 mm, up to W102 x L150 mm. Performance*: 110 labels/minute (with labels of W60 x L60 mm, and products of up to L200 mm and 2 kg). In MID conditions (M). <i>* Maximum performance will depend on the size, weight and morphology of the product, as well as on the regularity of the infeed of the products, dimensions and characteristics of the label, and MID conditions (M).</i> | Contact us |

| OPTION | CHARACTERISTICS | REF. |
|---|---|------------|
| Front or rear side labeller (to replace the top labeller) | Recommended for boxes. | Contact us |
| Side labeller (to replace the top labeller) | Recommended for boxes | Contact us |
| Corner labeller (to replace the top labeller) | Recommended for boxes. | Contact us |
| Second top labeller (in addition to the top labeller) | <p>Application of two labels on the top of the product. 3" printhead, direct thermal printing and application of the label by "Air-Jet®". A second labeller means you can combine 3" and 4" printheads, direct thermal and thermal transfer printing, as well as "Air-Jet®" and piston applicators.</p> <p>Maximum performance is provided by the lowest speed applicator, reduced by 10% (approximated data to be confirmed in each case).</p> <p><i>Note: Maximum performance will depend on the size, weight and morphology of the product, as well as on the regularity of the infeed of the products, dimensions and characteristics of the label, and MID conditions (M).</i></p> | Contact us |
| Second bottom labeller (in addition to the top labeller) | <p>Label application by contact, 3" printhead and direct thermal printing.</p> <p>Maximum performance is provided by the lowest speed applicator, reduced by 10% (approximated data to be confirmed in each case).</p> <p><i>Note: Maximum performance will depend on the size, weight and morphology of the product, as well as on the regularity of the infeed of the products, dimensions and characteristics of the label, and MID conditions (M).</i></p> | Contact us |
| L600 x W280 mm conveyor (to replace L400 x W280 mm conveyor) | For model Ls-4430+/400. | Contact us |

| OPTION | CHARACTERISTICS | REF. |
|---|--|------------|
| L800 x W280 mm conveyor (to replace L400 x W280 mm conveyor) | For model LS-4430+/400. | Contact us |
| L800 x W280 mm weighing conveyor, 4 load cells, not MID (to replace L400 x W280 mm conveyor) | For model Ls-4430+/400. | Contact us |
| L800 x W280 mm labelling conveyor (to replace L600 x W280 mm conveyor) | For model LS-4430+/400. | Contact us |
| L400 x W400 mm conveyor (to replace L600 x W400 mm conveyor) | For model Ls-4430+/600. | Contact us |
| L800 x W400 mm conveyor (to replace L600 x W400 mm conveyor) | For model LS-4430+/600. | Contact us |
| L800 x W400 mm weighing conveyor, 4 load cells, not MiD (to replace L600 x W400 mm conveyor) | For model LS-4430+/600. | Contact us |
| Split belt | For transparent packs or irregular shape/cylindrical products. | Contact us |
| Vertical detector on arch | For transparent packs or irregular shape products. Infeed conveyor with split belt necessary. | Contact us |
| Right to left operation | Standard operation: left to right. | Contact us |
| iP65 protection kit | Protected engines, bearings with lock, packaging gland, special load cell and heated detector. | Contact us |

| OPTION | CHARACTERISTICS | REF. |
|--|--|------------------------|
| DIS software | Equipment configuration and production data management. (See section on software). | Contact us |
| RMS Software | Equipment configuration, production data management and back up (LBS). (See section on software). | 7340R1U3 / 7340RNU3 |
| DLD Software | Graphic design of labels. (See section on software). | 7340L1U3 / 7340LNU3 |
| Wi-Fi | Wireless communications. | Contact us |
| Packed in phytosanitary wood case | Necessary depending on the destination. | PEEC080F |
| Metrological verification (M) | According to EU weighing directives (MID). | Contact us |

ACCESSORIES



MOTORISED CONVEYOR

Infeed/output conveyor L1,000 x W280 mm, with smooth belt.



DIBAL VISION ARTIFICIAL VISION CAMERA

Contact us about applications.



BARCODE READERS

Contact us about applications.



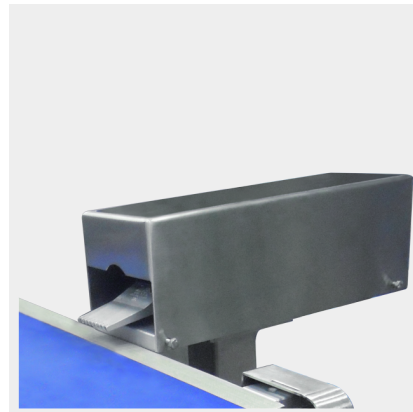
ROLLERS

Rollers conveyor for transporting or accumulating products.



ROTATING TABLE

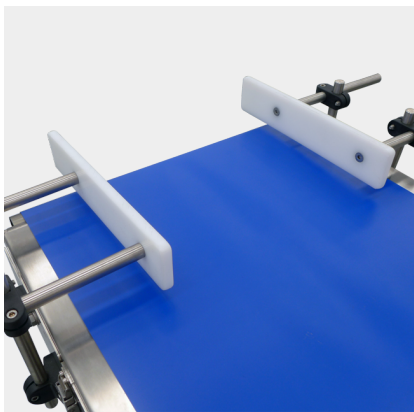
To collect wrapped and/or labelled products.



REJECTORS

Rejection system.

Options: pneumatic piston, "Air-Jet®", rotating blade or folding conveyor.



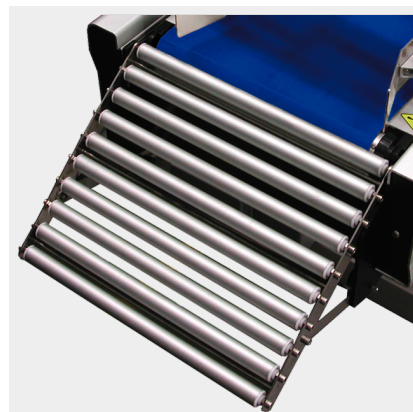
PRODUCT GUIDING SYSTEM IN INFEED CONVEYOR (STANDARD)

For special guides, contact us.



W200 MM EXIT RAMP

Non-motorised PVC rollers for W200 mm conveyor.



W280 MM EXIT RAMP

Non-motorised PVC rollers for W280 mm conveyor.



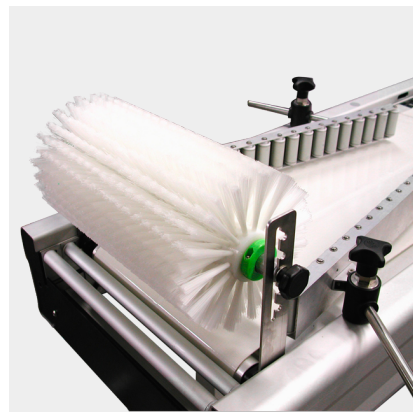
W400 MM EXIT RAMP

Non-motorised PVC rollers for



PRODUCT TURNING DEVICE

To change the position or



LABEL FIXERS

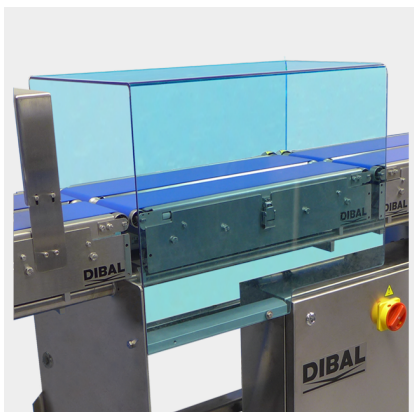
For a better application of

W400 mm conveyor.

orientation of the products.

labels on products with irregularities on the application surface.

Options: brush roll, foam roll, foam piston, etc.



**POLYCARBONATE
PROTECTOR FOR
WEIGHING CONVEYOR**

To avoid external disturbances during the weighing process.



4 WHEELS WITH BRAKES

stud included.



Astintze, 26
48160 Derio (Vizcaya) Spain
T. (+34) 94 452 15 10
E. dibal@dibal.com