



MANUAL LABELLERS LP-500 SERIES

2" manual weigh-price labellers connectable to weighing platforms.



INFORMATION



1 PRINTER LABELS



GRAPHIC LCD DISPLAY



UP TO 10.000 PLUs



UP TO 20 OPERATORS



CONNECTABLE TO PLATFORMS UP TO 4 LOAD CELLS



ETHERNET TCP/IP



USB

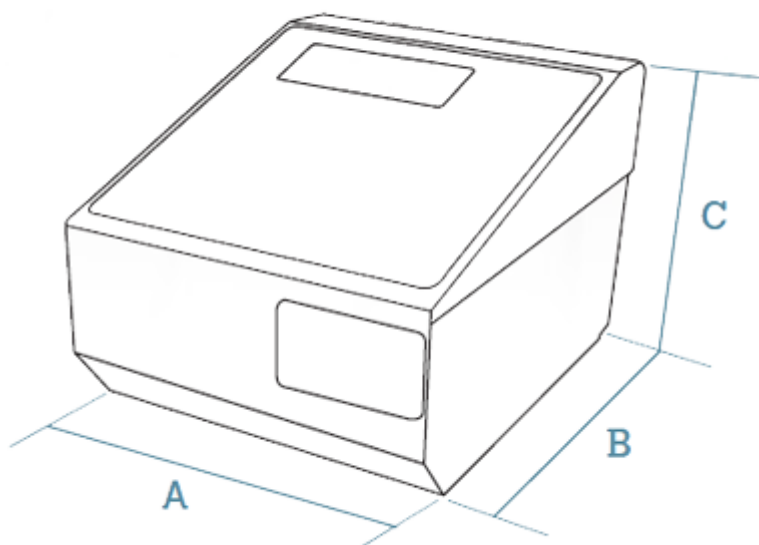


Wi-Fi OPTIONAL



METROLOGICAL VERIFICATION OPTIONAL (EU)

Dibal LP-545 label printer is ideal for manual labelling of products. Connected to a weighing platform works as a full equipment to print labels with weight and price information.



Data in mm

A 285

B 285

C 240

MAIN CHARACTERISTICS

- High performance label printer (suitable also for receipts).
- Compliance with EU Regulation 1169/2011 on the provision of food information to consumers.

FEATURES

- Extensive information for each PLU: normal price and offer price, price for weight scales and by kg/100 g, 3 names of 20 characters or 2 names of 30 characters, 20 free texts of 24 characters, 1 text of 3,000 characters, etc.
- PLU search by number or name.
- Preset keys to programming menus: to change prices, register PLUs or vendors, etc.
- Direct access to 999 PLUs from the keyboard.
- Printing of the labeller menus.
- Programmable macros: recording of a sequence of keys to create direct access to any task (reopening of receipt, lists, change in batch number etc.). LP-545 labellers have as many macros as direct PLU keys, besides 10 specific macros keys.
- Sales and management reports: sales (by article, vendor, time frames, last month, etc.), modified PLUs, etc.
- Fast and reliable communication between labellers, with PC and mobile devices (via DWS).
- Option to record normal price and offer price for each article.
- Stock management by article.
- Piece counting function.

WEIGHING

- Connection to 1 or 4 load cells platform.

CONSTRUCTION

- Stainless steel casing.
- Access to all non-metrological components without the need to unseal the labeller.

DISPLAY

- LCD matrix graphic display.
- 2 selectable screens: full information (weight, price / kg, tare, operators and article's name) or weight only (with checkweighing function).

KEYBOARD

- 150 keys (15 x 7).
- 80 x 2 article preset keys (direct PLUs).

PRINTER

- Label printer (also suitable for receipts by changing the paper roll and the working mode).
- 54 mm thermal printer.
- High resolution (8 dots/mm) and speed (100 mm/sec).
- Cassette for immediate paper roll change.
- Optional:
 - Linerless.

LABELS

- 15 fonts (6 monospaced + 9 multispaced: more modern and legible).
- From W30 x L30 mm to W60 x L150 mm.
- 20 fixed formats + 40 programmable formats.
- 100 logos.
- Bar codes: EAN-13, EAN-128, CODE-128 and QR codes.
- 60 fields of information.
- 100 programmable texts.
- Manual and automatic pre-packing modes.
- 3 levels of totals.
- Printing of “n” identical labels.
- Printing with 90°, 180° and 270° rotation.
- Automatic adjustment of the paper detection option.
- Checkweigher function: it only prints the label if the product is between a pre-established minimum and maximum weight.
- Packaging date, expiry date and extra date (for any application).
- Alphanumeric batch number.
- 10 types of generic traceability (for meat, fish, fruits, vegetables, etc.) up to 99 products. Included in the prevailing European legislation on bovine traceability.

RECEIPTS

- 15 fonts (6 monospaced + 9 multispaced: more modern and legible).
- Up to 75 items.
- 2 fixed formats + 2 programmable formats.
- 4 logos.
- Bar codes: EAN-13, EAN128 and CODE-128.
- Name of vendor.
- 9 payment methods.
- Total in National currency and other 3 currencies.
- Discounts per line and total.
- Loyalty points.
- Customers on account.
- Recipes.

FOOD INFORMATION

- **Compliance with EU Regulation 1169/2011 on the provision of food information to consumers as of 13 December 2016:**
 - Minimum letter size: 1.2 mm.
 - Effect (**bold**, underlined, or **both**) for each character in the text.
 - Possibility of using the general text “G” (3,000 characters) for ingredients, in lower case or UPPER CASE to highlight allergens.
 - Possibility of including a table of nutritional facts.
 - Free texts (20 x 24 characters).
 - For direct sale receipts and labels: possibility of indicating in the PLU name (with an * or other symbol) those that contain allergens and programming a text, such as “* Consult allergens”.
 - Possibility of printing 2 labels for each operation: programmable by PLU, configurable information, 2nd automatic or manual label (also to be used as promotional labels).

COMMUNICATIONS

- **TCP/IP Ethernet for interconnection and connection to PC.**
- **RS-232, for connection to scanner.**
- **USB**
- **Optional:**
 - Wi-Fi.

SECURITY

- **Access to different protected programming menus via configurable passwords.**

INTERCONNECTION

- **Up to 16 Dibal LP-500 labellers or 16 Dibal Star series scales.**

CONNECTIVITY WITH OTHER DEVICES

- **PC.**
- **Bar code scanner (powered by the scale - 5 VDC) to read EAN-13 and EAN-128 bar codes.**

POSSIBLE INTEGRATION WITH OTHER EQUIPMENT

- **1 or 4 load cells weighing platforms.**
- **Dibal weight indicators.**
- **Other LP-500.**
- **Dibal Star series scales.**

SOFTWARE (SEE SECTION ON SOFTWARE)

Software de PC:

- **DFS:**

- Programming of labellers.
- Receipt of sales data.
- Data backup copy.
- Graphic design of receipts and labels.
- **RMS *:**
 - Programming and management of labellers.
 - * Does not manage:
 - Images (of articles and advertising).
 - Specific functions of the LP-545 labeller.
- **DLD:**
 - Graphic design of receipts and labels.
- **Integration tools: in Windows or Linux to facilitate communication with the Back Office.**

Labeller firmware:

- **DWS (Dibal Web Server):**
 - Allows access to the information on each labeller (via passwords) from any computer or mobile device with an Internet browser.

POWER SUPPLY

- **Mains: 110 up to 230 VDC.**
- **Optional:**
 - Anti-blackout 24 V rechargeable internal battery and connector to external battery 24 V.

MODELS

LP-545

Ref.: 7L453050IZ_ _

- **Display:** LCD matrix graphic.
- **Printer:** Labels (or Receipts).
- **PLUs:** 10,000.
- **Direct PLUs:** 80x2.
- **Operators:** 20.
- **Power:** Mains.

OPTIONS

OPTION	CHARACTERISTICS	REF.
Linerless	Label or receipt on continuous adhesive paper without supporting paper.	Contact us
Wi-Fi	Wireless communications (IEEE 802.11n).	Contact us
Anti-blackout	Anti-blackout internal battery 24 V + external battery connector 24 V.	Contact us
DFS Software	Labeller configuration, receipt of sales data for processing with other IT applications and data backup (LBS), and labels and receipts graphic design. (See section on software).	7340F1U1 / 7340FN1U1 / 7340D1U1 / 7340DN1U1
RMS Software	Labeller configuration, receipt of sales data from processing with other IT applications and data backup (LBS). (See section on software).	73400000 / 7340R1U1 / 7340RN1U1
DLD Software	Labels and receipts graphic design. (See section on software).	7340L0U1 / 7340L1U1 / 7340LN1U1
Technical DWS	Dibal Web Server software for the remote configuration of the labeller. (See section on software).	7340W101
Full DWS	Dibal Web Server software for the remote configuration of the labeller and processing of the information generated. (See section on software).	7340WN01
Metrological verification (M)	According to EU weighing directives. (See section on equipment metrological verification).	Contact us

ACCESSORIES



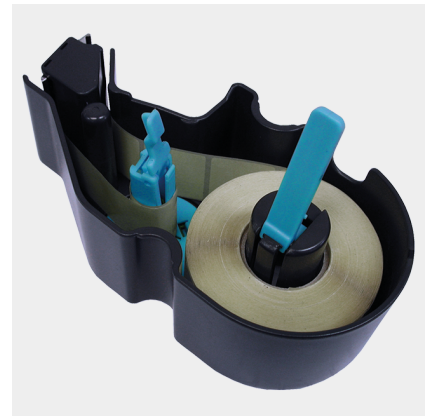
BAR CODE SCANNER

Includes connection cable to labeller.



BAR CODE WIRELESS SCANNER

Includes connection cable between the wireless scanner base and the labeller.



ADDITIONAL CASSETTE

For receipt or label rolls.



ADAPTER FOR RECEIPT PRINTING

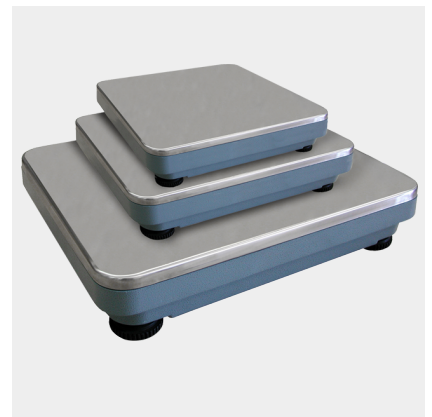
Required for standard size receipt rolls.



ME SERIES SINGLE LOAD CELL PLATFORMS (MONORANGE)

3 versions (see section on Platforms for further information).

For multirange option, consult.



MA SERIES SINGLE LOAD CELL PLATFORMS (MONORANGE)

Iron structure, aluminium load cell, stainless steel plate.

(See section on Platforms for further information).



**DP SERIES SINGLE LOAD
CELL PLATFORM
(MONORANGE)**

Aluminium/plastic structure,
aluminium load cell, stainless
steel plate.



Astintze, 26
48160 Derio (Vizcaya) Spain
T. (+34) 94 452 15 10
E. dibal@dibal.com