

# LP-5000



PCAP  
TOUCH SCREEN



4" PRINTER  
250 mm/s



CONNECTABLE TO  
EXTERNAL ZPL  
PRINTER



USB



ETHERNET



WI-FI  
OPTIONAL



PLUS, FORMATS,  
CLIENTS AND  
TRACEABILITY  
UNLIMITED



UNLIMITED  
OPERATORS



CONNECTABLE TO 1  
PLATFORM UP TO  
16 LOADCELLS



CONNECTABLE TO 2  
PLATFORMS UP TO  
16 LOADCELLS  
OPTIONAL



CONNECTABLE TO  
SCANNER



METROLOGICAL  
VERIFICATION  
OPTIONAL (EU)

## Outstanding functions

- Possibility of labelling fixed/variable weight or amount.
- Checkweigher mode with filling display on the status bar.
- Access to settings and uses depending on user levels.
- Complete, easy-to-edit job information for quick on-screen changes (client, batch, price, tare, dates, traceability, label format...).
- Graphic designer of labels in the equipment for creating and editing formats.
- Tares: fixed, glaze percentage, accumulative...
- Generic traceability on label.
- Label management of totals (up to 3 levels) for easy editing and reprinting.
- Option to print text in different languages (UNICODE).
- Own print fonts and any kind of TTF fonts.
- Loading and processing of logos and easy printing images.
- Front USB interface for full or partial backups, uploading logos and images, and importing/exporting data.
- Configuration and printing of most one-dimensional and two-dimensional barcodes.
- Adapted to comply with EU regulation 1169/2011 on food labelling information.
- Automatic or manual label printing of products with variable weights, or preprogrammed for fixed weight or non-weighed articles.
- Suitable for legal metrology.

## Weighing (optional)

- Connection to 1 weighing platform up to 16 loadcells with metrological verification.

- Optional:
  - Connection to 2<sup>nd</sup> weighing platform up to 16 loadcells with metrological verification.
- Wide possibility of ranges.
- Accuracy: multi-range (3,000 divisions), mono-range (6,000 divisions), multi-interval (3,000 divisions).

## Labelling system

- Printing type:
  - Direct Thermal (DT).
- Optional:
  - Thermal Transfer (TT) (ribbon).
- Printer head:
  - 4" long life with history control.
- Resolution:
  - 8 dots/mm.
- Movable paper sensor (can be adjusted for label width and type).
- Printing speed:
  - Up to 250 mm/s.
- Control of printer usage for predictive maintenance.

## Labels

- Dimensions:
  - From W30 x L30 up to W100 x L500 mm.
- Inner core diameter: 40 mm.
- Maximum label roll diameter: 200 mm.
- Maximum width of back paper: 102 mm.
- Option to use paper, polypropylene and perforated cardboard labels.

## CPU\*

- Processor: Celeron N3160.
- RAM: 4 GB DDR3 (expandable to 8 GB).
- Hard disc: 128 GB.

\* Subject to changes without prior notice, subject to improvements.

## Construction

- Structure:
  - AISI 304L stainless steel, anodised aluminium and textured ABS.
- Console:
  - ABS plastic.
- Screws and roller material tractors and shafts of the labelling station: Stainless steel.

## Display

- 10.1" flat TFT touch screen (resolution: 1,024 x 600) projected capacitive.
- \*Optional 15" resistive TFT.

## Communications

- 1 TCP/IP Ethernet.\*
  - 2 RS-232.\*
  - 2 back USB (3.0 + 2.0).\*
  - Optional: Wi-Fi.
- \*RS-232 connections to the interior and watertight plugs for USB and Ethernet for added protection.

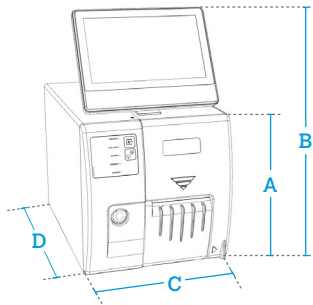
## Power supply

- 110-230 VAC 50/60 Hz.

## Possible integration with other equipment

- Weighing platform (up to 16 loadcells).
- Another LP-5000.
- Gateway between the DIS and the 5000 family. Possibility of integrating products registered in machines of previous families, and sending weighing and level totals from the LP-5000 to the DIS to have them centralised.
- Printers with ZPL interface (up to 3 simultaneously).

## DIMENSIONS



DATA IN mm

A	310
B	498
C	300
D	470

Weight with packaging: 24.0 kg.

## Models

### MODELS WITH WEIGHING PLATE

#### LP-5400 IV

- 4" printhead with direct thermal printing.
- Printing speed: 250 mm/second.

Ref.: 7L5Y1AUGY1\_ \_

**M** Optional

#### LP-5400 IVT

- 4" printhead with thermal transfer or direct thermal printing.
- Printing speed: 250 mm/second.

Ref.: 7L5Y1BUGY1\_ \_

**M** Optional

### MODELS WITHOUT WEIGHING PLATE

#### LP-5400 I

- 4" printhead with direct thermal printing.
- Printing speed: 250 mm/second.

Ref.: 7L5Y1AUGY0\_ \_

#### LP-5400 IT

- 4" printhead with thermal transfer or direct thermal printing.
- Printing speed: 250 mm/second.

Ref.: 7L5Y1BUGY0\_ \_

## Options

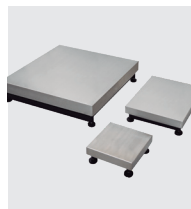
Option	Characteristics	Ref.
Display 15" resistive	With stainless steel housing	...AGY1_ _(*)
Connection to a 2 <sup>nd</sup> platform	Up to 16 cells.	Contact us
RAM upgrade	RAM upgrade from 4 GB to 8 GB.	Contact us
Wi-Fi	Wireless communications.	Contact us
Metrological verification (M)	According to EU weighing directives for weighing labeller and platform assemblies. For LP-5000 with weighing plate. [See section on equipment metrological verification].	Contact us

(\*) The reference of the LP-5000 with 15" resistive display is obtained by replacing the "U" in the seventh position of the code of the standard LP-5000 with an "A".

## Accessories

#### Single load cell or 4 load cells platforms

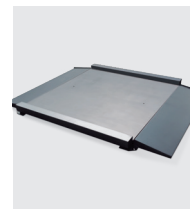
Only for LP-5000 with weighing version.  
(See Platforms section for more information).



Ref: Contact us

#### Platform up to 16 cells

Only for LP-5000 with weighing version.  
(See Platforms section for more information).



Ref: Contact us

#### Articulated arm for console

To attach the console to the printer.



Ref: 496933A

#### Barcode scanner

Scanner. Includes RS-232 connection cable.



Ref: PI1554

#### Barcode scanner

Scanner. Includes USB connection cable.



Ref: 497449A

#### Wireless barcode scanner

Scanner. Cable for connection between the wireless scanner base and the labeller included.



Ref: BC-745 + BL-5653

#### Stainless steel box with legs

Mounting bracket for the weigh-price labeller.



Ref: 493603A

#### Stainless steel box with brackets

Mounting bracket for the weigh-price labeller.



Ref: 75000978

#### RW-3000 external label rewinder



Ref: BE-AD1111