

How to disable 3 LED strips for ALPHAREX 2005-2011 Toyota Tacoma Headlights

ALPHAREX specializes in designing and producing superior and uniquely stylish aftermarket automotive performance lighting with unrival innovative technology. The following instruction guide we take you through on the topic: **How to disable 3 LED strips for the new ALPHAREX HEADLIGHTS** for your 2005-11 Toyota Tacoma step by step.

NOTE: Some vehicle require the DRL harness installed for the headlight to function properly.



Table of Contents



- REQUIRE TOOLS
- STEP 1. Open the headlight's Circuit Board
- STEP 2. Unplug 2 pin connector
- STEP 3. Complete steps to disable 3 LED strips

Disclaimer: This article is a tutorial guide. By reading this article, you agree it is for reference only and AlphaRex USA and its distributors make no guarantee on the finished results. Under no circumstances whatsoever shall AlphaRex USA nor its distributors be liable for any damage, misuse or personal injuries. If you do not fully understand the instruction procedure, it is highly recommended that you seek help from professional mechanics to do the instruction.

ALPHAREX PRO-Series, LUXX-Series and NOVA-Series headlights for 2005-11 Toyota Tacoma come with 3 LED strips on the headlights by default. Customers can choose to enable or disable these 3 LED strips based on their preference.

REQUIRE TOOLS

PREPARE THE TOOL FOR MODIFICATION

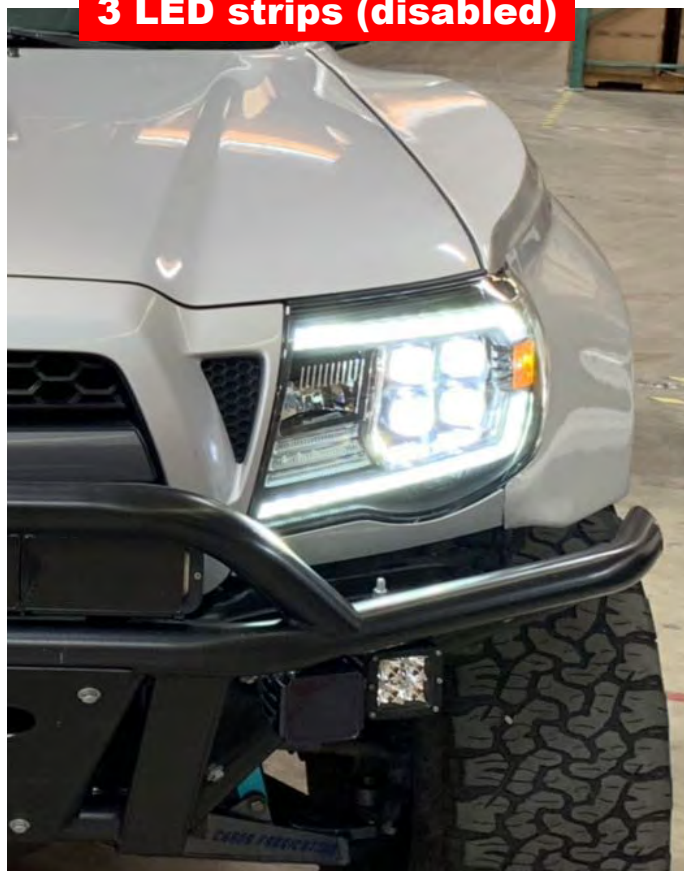


Phillips
Screwdriver

3 LED strips (enabled)



3 LED strips (disabled)

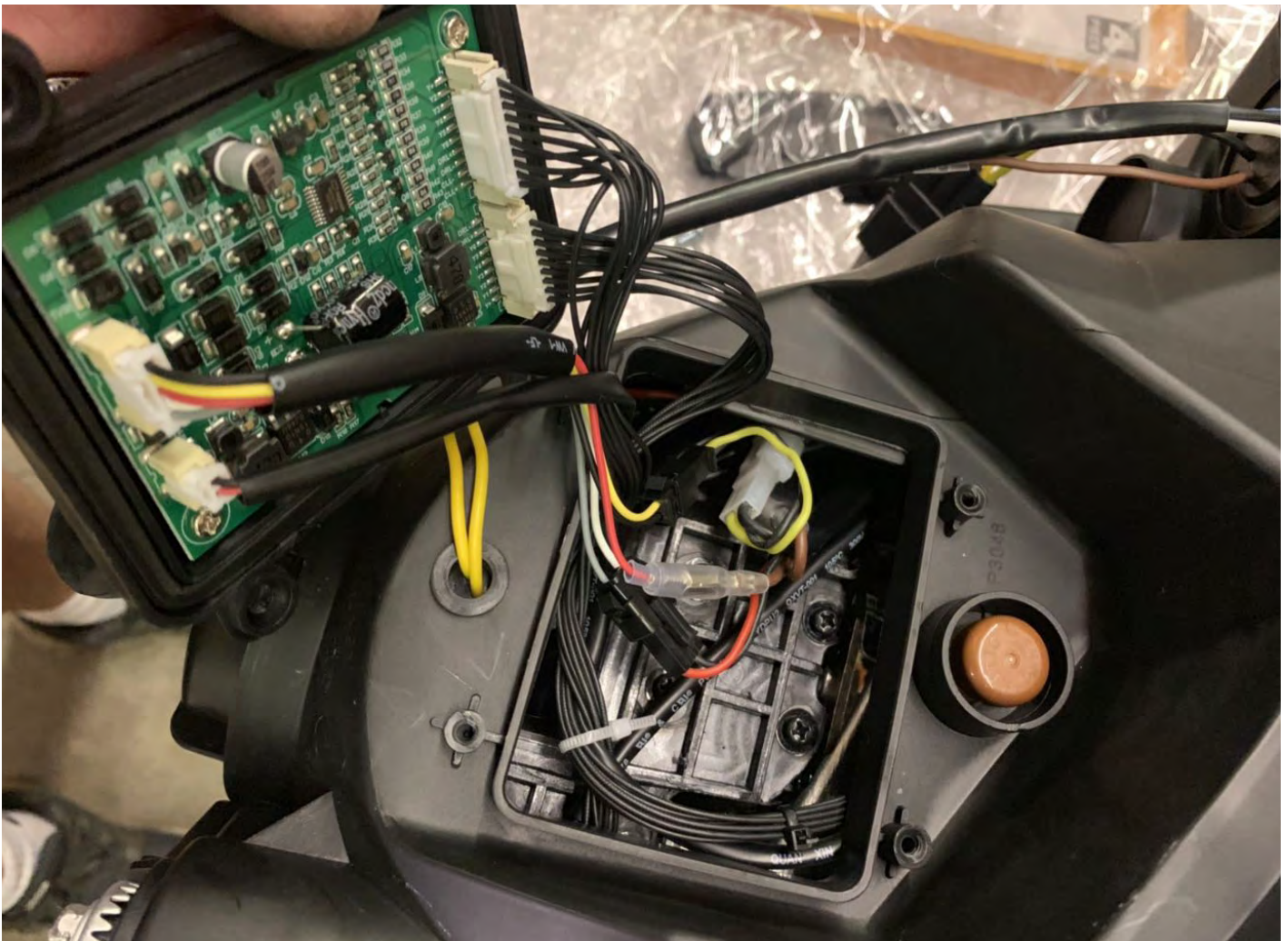


For customers who want to keep the 3 LED strips, nothing need to be done.

For customers that don't want the 3 LED strips, please follow the following steps.

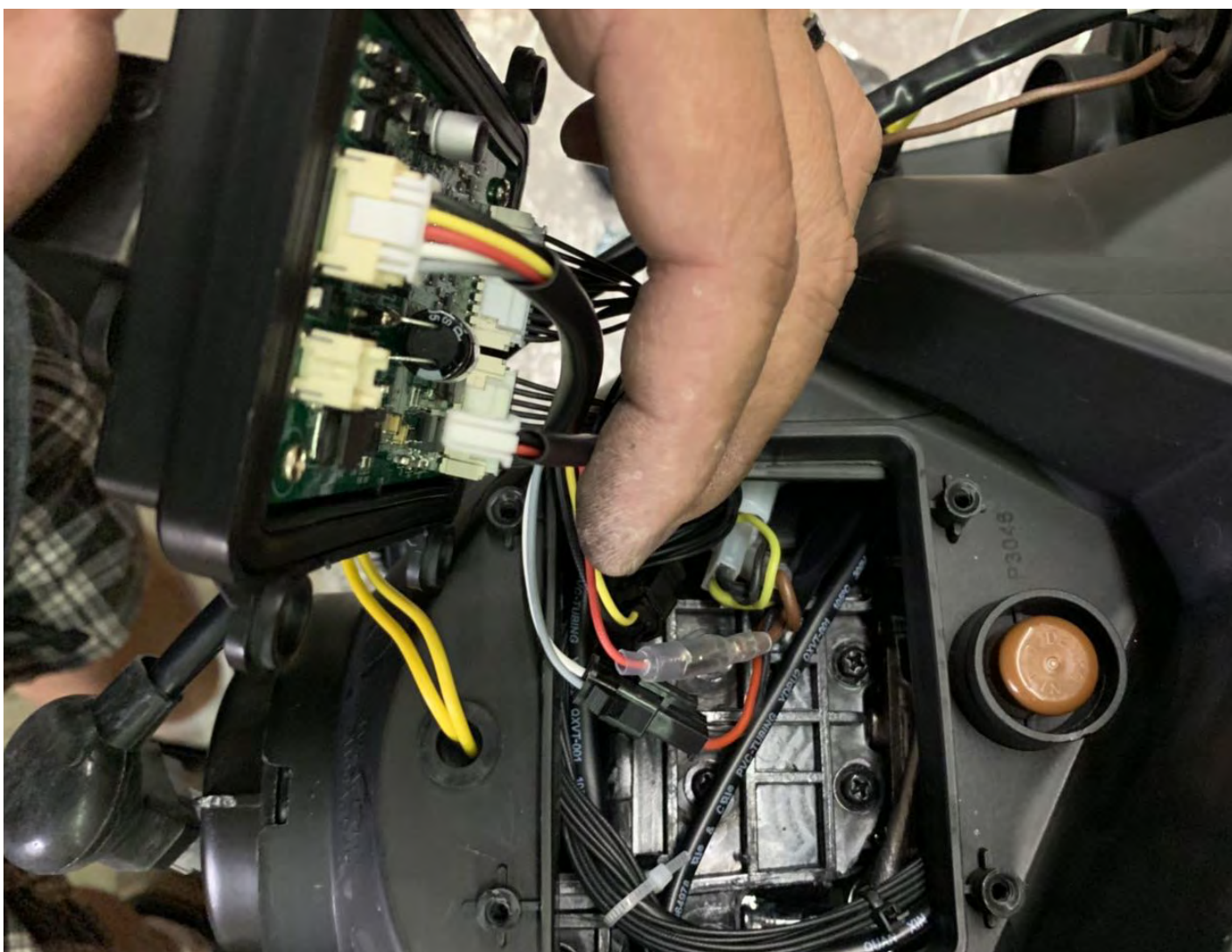
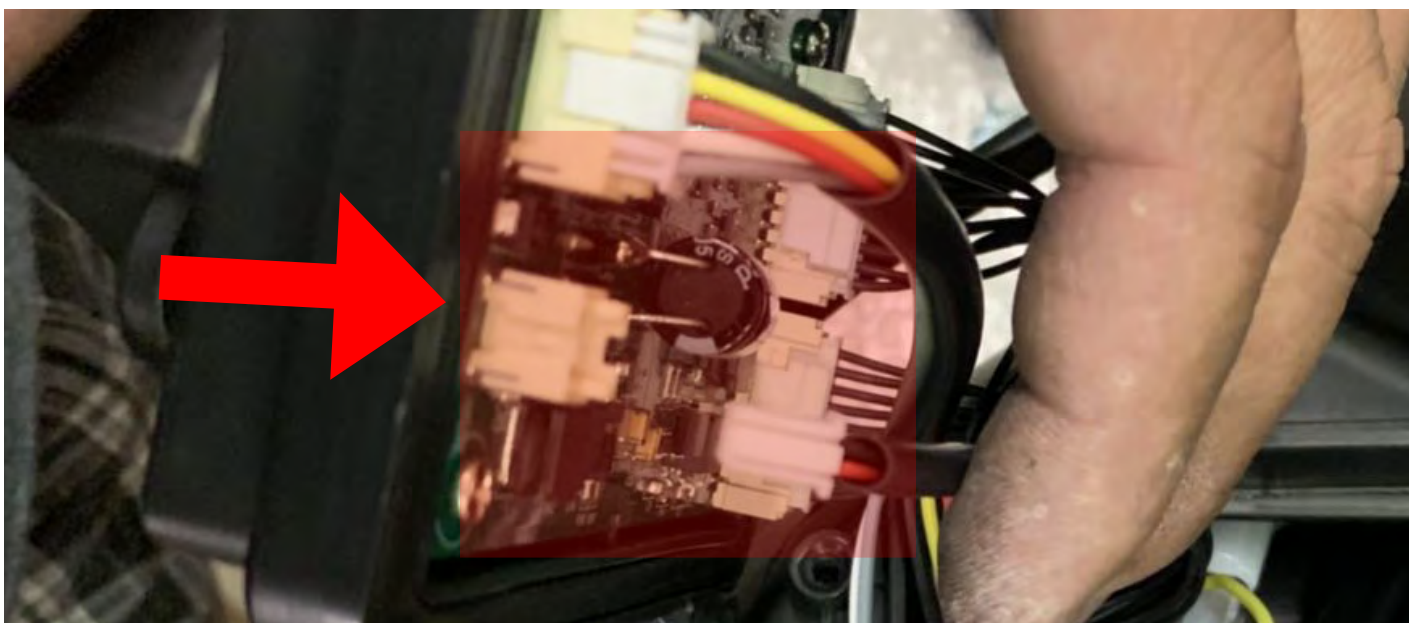
STEP 1. OPEN THE HEADLIGHT'S CIRCUIT BOARD

Unscrew the 3 Phillips screws on the bottom of the headlight.



STEP 2. UNPLUG 2 PIN CONNECTOR

With the circuit board expose, unplug the 2 pin connector (RED and BLACK wires) and leave it unplug.



STEP 3. COMPLETE STEPS TO DISABLE 3 LED STRIPS

Reinstall the circuit board back onto the headlight by installing the 4 Phillips screws.

Repeat the steps for the other side of the headlight.

