

How To Install: Form Lighting 2014-2024 Toyota 4Runner LED Headlights

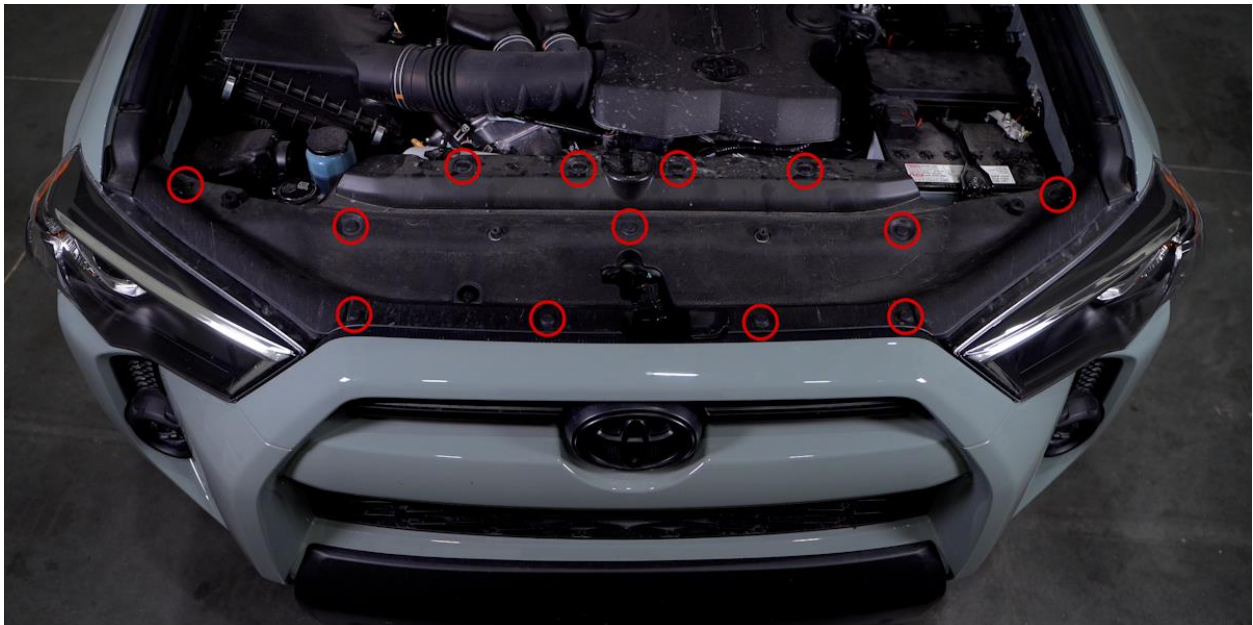
Installation Tools

- Plastic Trim Removal Tool
- Ratchet
- 10mm Socket
- Needle Nose Pliers
- Phillips Head Screwdriver

Installation Instructions

Step 1 - Remove Radiator Cover

Pop the hood, and remove the thirteen (13) plastic clips holding on your radiator cover using a trim removal tool.

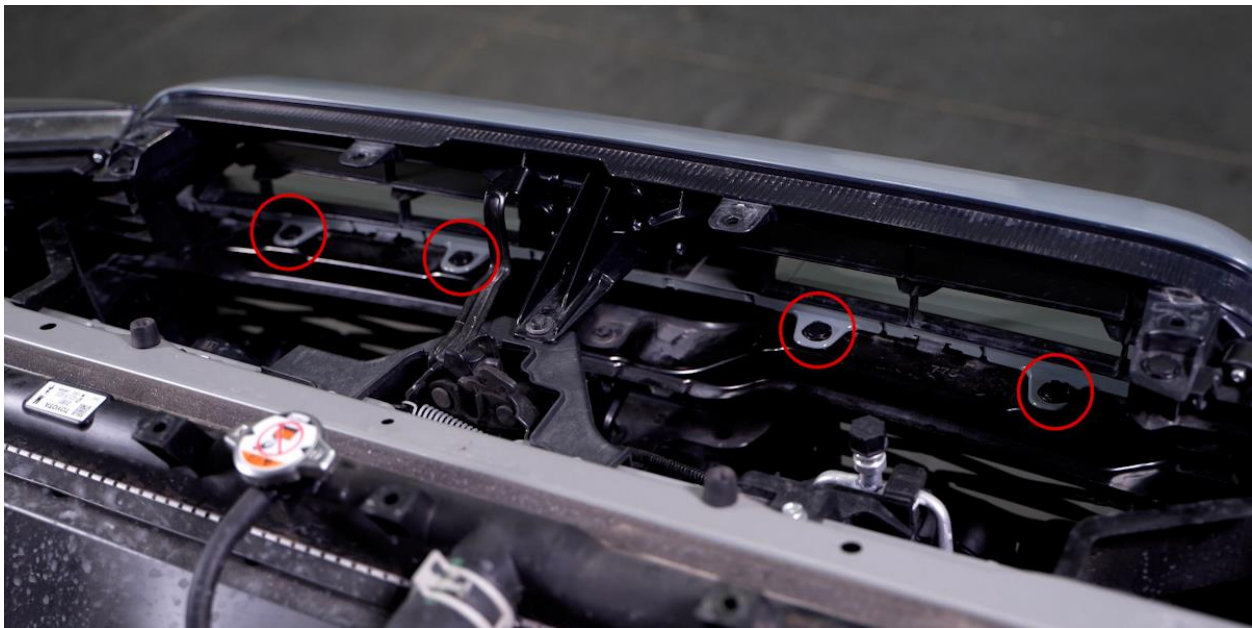


With all the clips removed, lift the cover up and away from the vehicle.

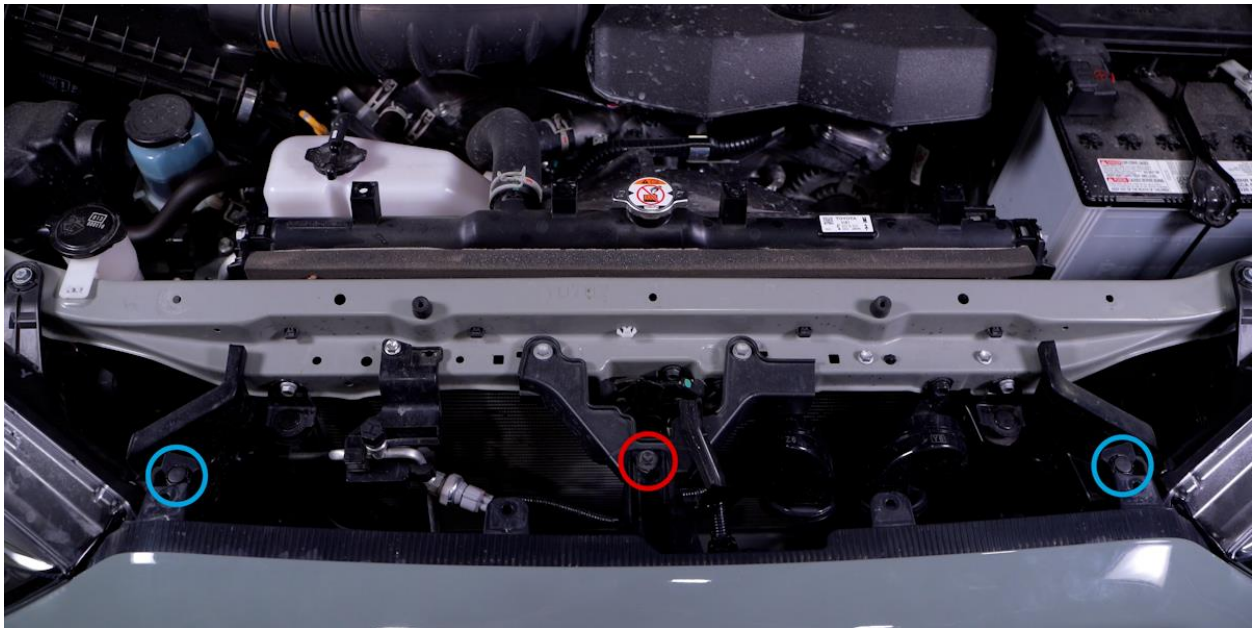


Step 2 - Remove Grille/Bumper

Section 1 - Removing Upper Grille Bolts: Using the trim removal tool remove four (4) plastic clips behind the upper grille.

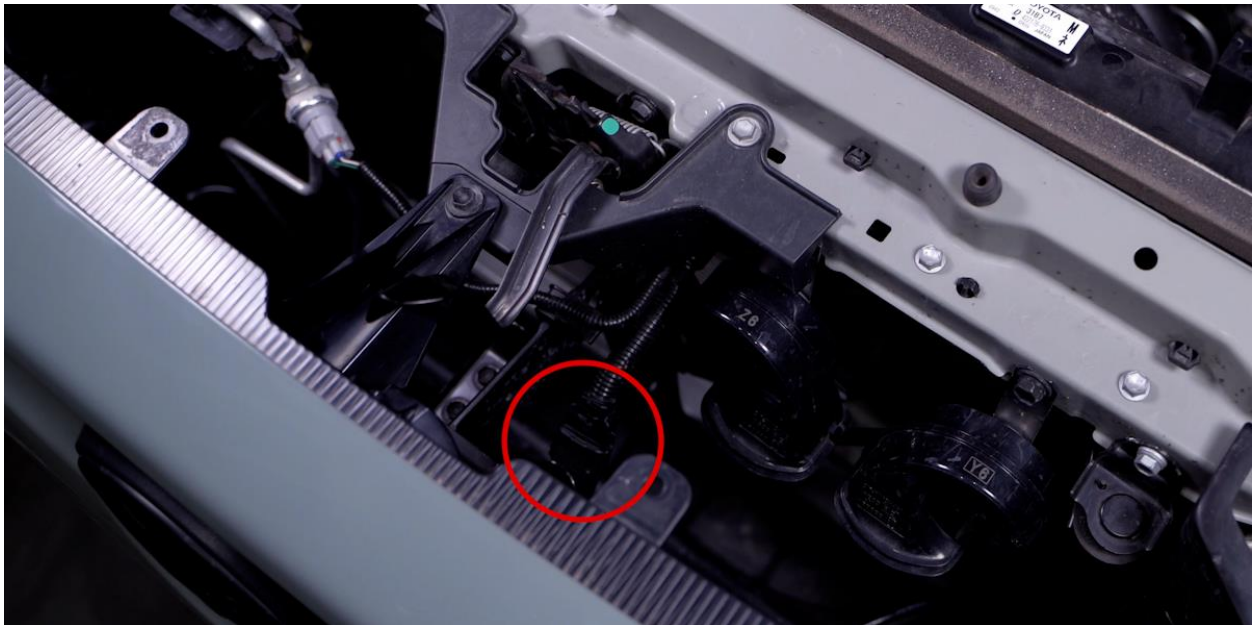


Next, along the top of the grille remove one (1) 10mm bolt from the center (circled in red). Then remove the two plastic clips (circled in blue).

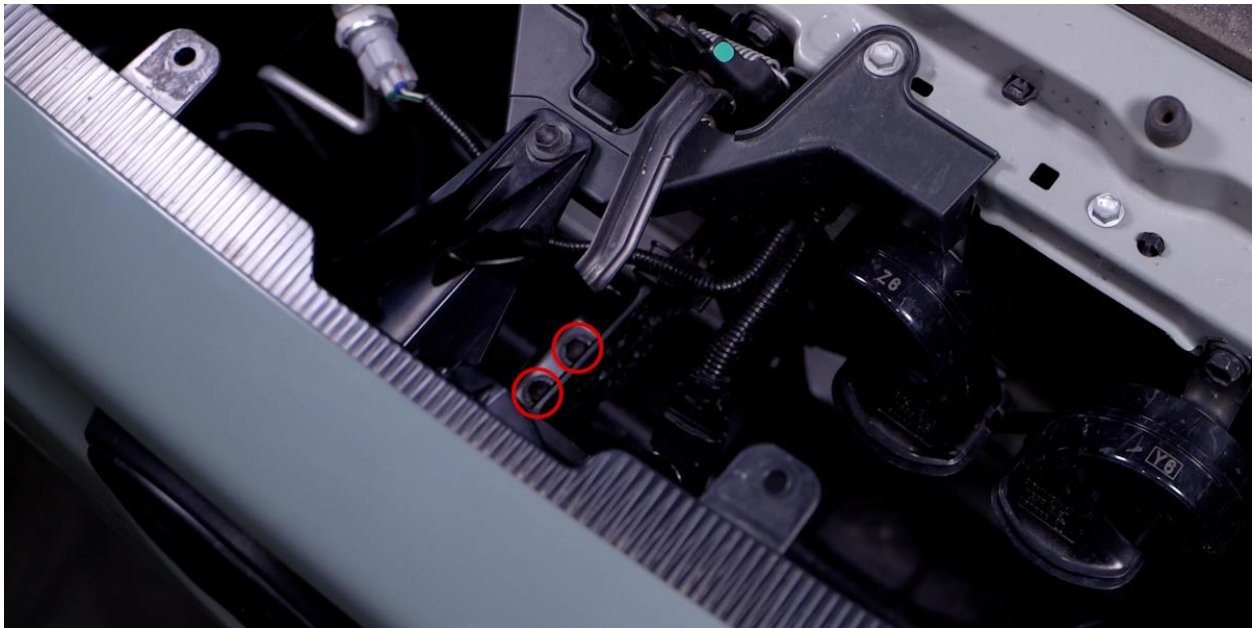


Section 2 - Removing Toyota Safety Sense: If your vehicle comes equipped with the Toyota Safety Sense feature, disconnect the harness from the back of the grille.

Note: If your vehicle did not come equipped with the Toyota Safety Sense feature skip ahead to Section 3.



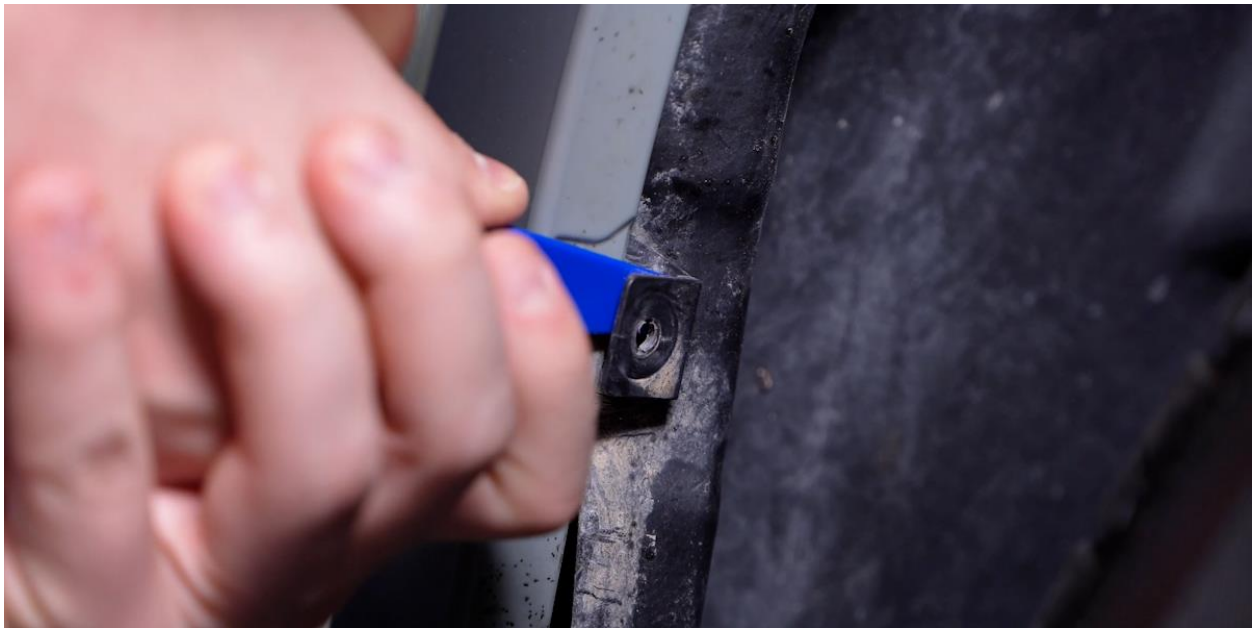
Then, using a 10mm socket remove the two (2) bolts under the hood latch that hold on your sensor.



Section 3 - Removing Bottom Grille Bolts: Remove three (3) 10mm bolts from inside the fender.



Remove two (2) clip nuts holding the fender liner to the bumper using a trim removal tool. Then peel back the fender liner to access your fog light harness, and disconnect it.



Repeat this process on the other side before moving on. Then, remove six (6) more 10mm bolts along the bottom of the bumper.



NOTE: If your vehicle is a 2020+ model, there is one more connector behind the fender liner on the driver's side to disconnect. Depress the locking clip and rotate the white collar up to remove it.

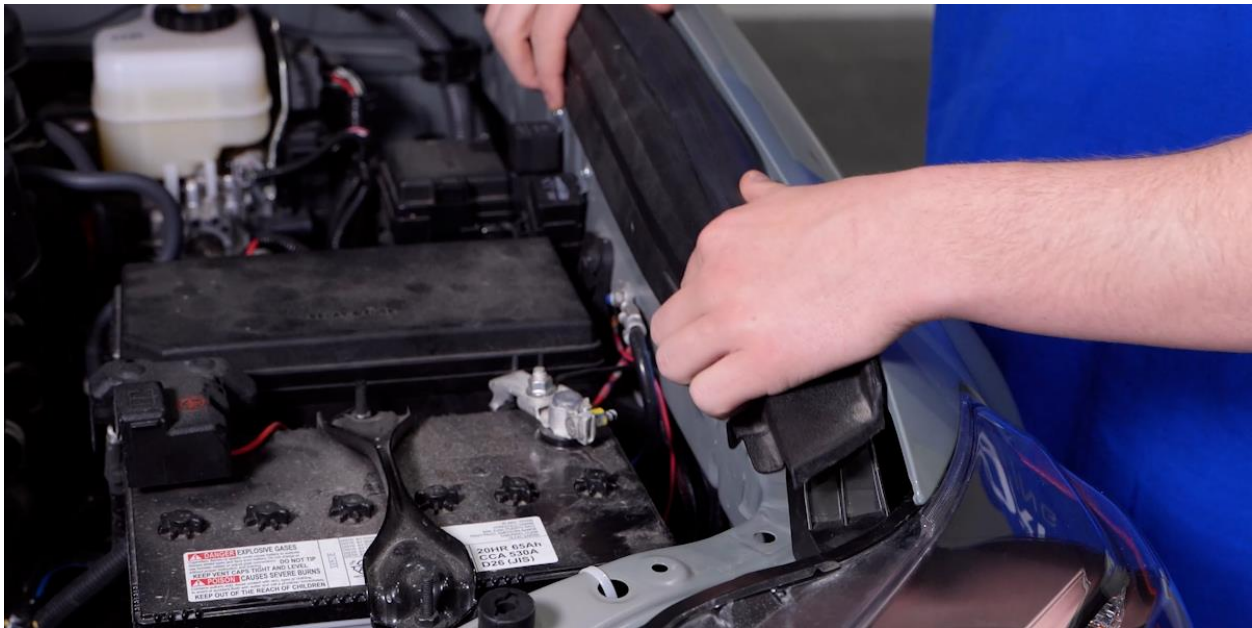


Section 4 - Removing Bumper: To remove the bumper, begin by lifting and pulling it away from the fastener at the corner. Work gradually inward from both sides to meet in the middle, eventually fully releasing the bumper.



Step 3 - Remove Factory Headlight

Remove the plastic hood seal on the side of the engine bay by pulling back toward the vehicle until the plastic clips snap out of place.



Using a 10mm socket, remove four (4) bolts holding on your headlight. There are two (2) on top, one (1) on the inside, and one (1) on the bottom.



Disconnect the factory harnesses and lift the lamp up and away from the vehicle to fully remove it.



Repeat this process to remove the other lamp.

Step 4 - Transfer Plastic Headlight Fastener

Using a Phillips head screwdriver, remove three (3) screws holding on the plastic fastener to the bottom of the factory headlight.



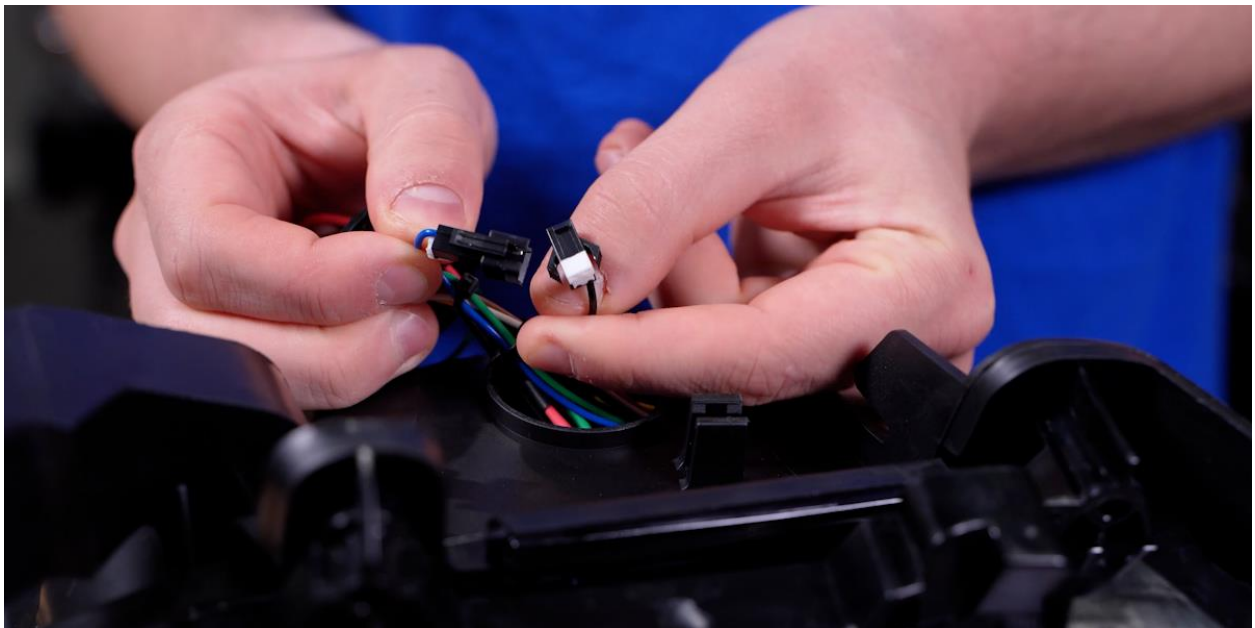
Transfer this over to your new headlight by reversing the steps we used to remove it. Repeat this process for both lamps.

Step 5 - Selecting DRL Color

Remove the grommet on the bottom of the headlight using your trim removal tool.



Locate the black connector with black and blue wires.



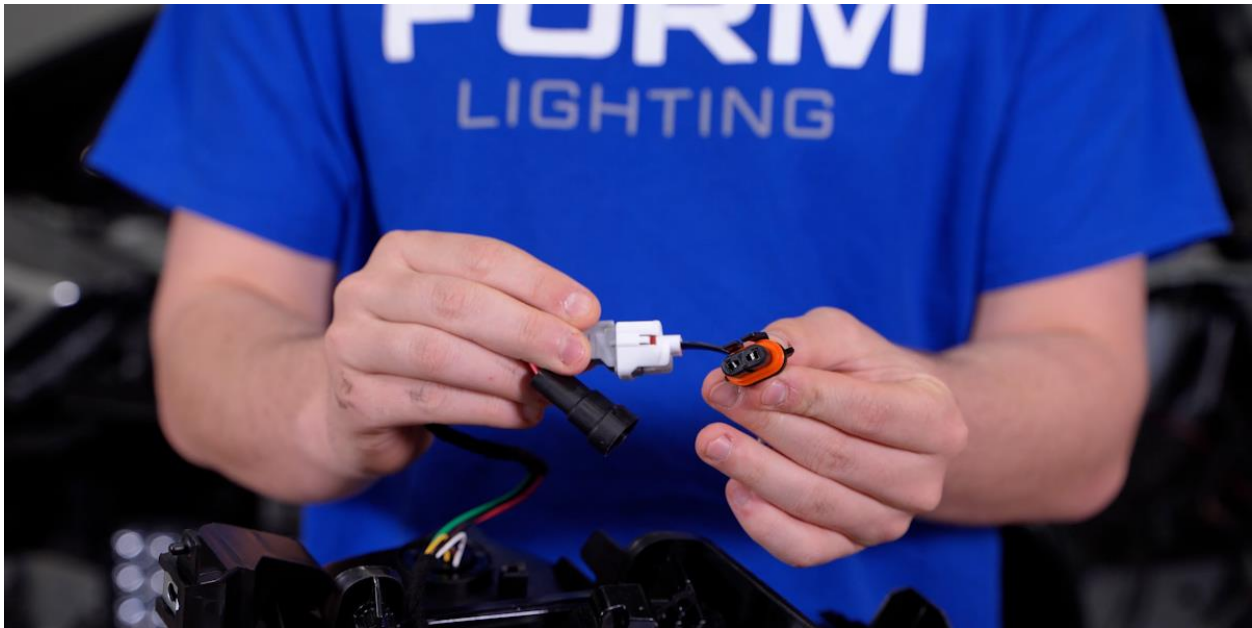
To enable the white DRL plug in these two connectors, and for amber DRL functionality simply leave them both connected. Repeat this process for both lamps.

Then, put everything back together by reversing the steps we used to take it apart.

Step 6 - Installing Adapter Harness (2021+ Only)

Fitment Notes:

- If your vehicle is a 2021+ model, you will need to use our included adapter harness.
- Following this step incorrectly may result in your high beams not functioning properly.
- If your vehicle is a 2021+ TRD Offroad or SR5, plug the highlighted low beam connectors into the headlights and leave the 9006 connectors on the adapter harnesses disconnected.



If you are installing on a 2021+ Limited, TRD Pro, Nightshade, or any other 2022+ models, plug both the low beam and the 9006 bulb connectors into each headlight.



Step 7 - Tapping DRL Fuse

Open your fuse box and locate injector fuse INJ10A. Remove it, and replace it with our included DRL fuse tap. Then route the other ends of the harness to the headlight locations, making sure to keep it out of the way of any hot or moving parts.

Step 8 - Mount Your Headlight

Plug all the corresponding connectors into the back of your new headlights, and put everything back together by reversing the steps we used to take it apart.



Step 9 - Final Adjustments

Using a Phillips head screwdriver, turn the integrated adjustment screws to adjust your headlight's beam pattern and make your final aiming adjustments.

