

INSTALLATION INSTRUCTIONS: 2007–2020 TUNDRA CREWMAX ROCK SLIDERS



ISNTALLATION DIFFICULTY: Medium

INSTALLATION TIME: 1-2 Hours

REQUIRED TOOLS: 12 mm and 9/16 wrench and sockets with ratchet

7/32nd Allen Head Wrench

Drill and 3/8" drill bit

INCLUDED HARDWARE: 8 x 3/8" Countersunk Bolts

10 x Nut Plates

22 x 3/8" Washer

17 x 3/8" Lock Washer

11 x 3/8" Bolts

11 x 3/8" Nuts



INCLUDED COMPONENTS:

L + R Pair All-Pro Off Road Tundra Crewmax APEX Rock Sliders

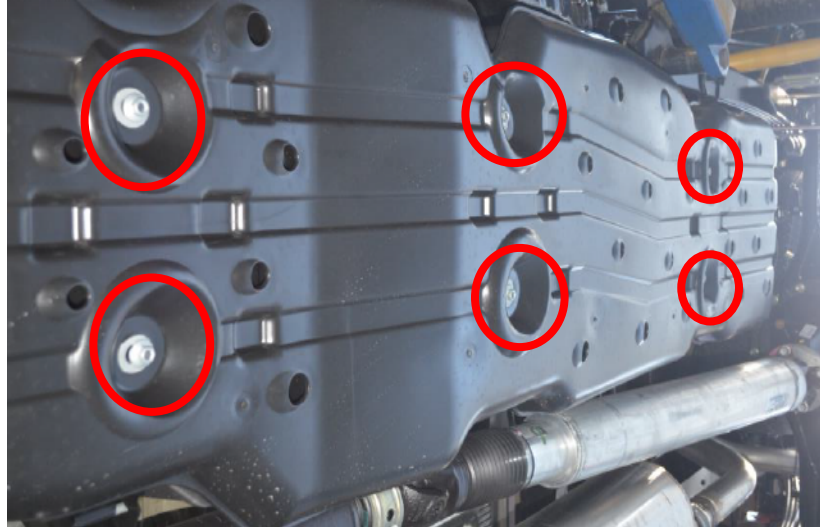
PROCESS:

- 1.) Account for all assembly components and mounting hardware. Gather tools.
- 2.) While it is not required, it is highly recommended to coat the nut plates in a rust inhibiting paint such as rustoleum. If sliders did come powder coated, now is also the best time to paint them. It is also recommended to check the frame for any rust spots and paint and prime accordingly before installation of sliders.
- 3.) Arrange rock slider along appropriate side of vehicle, aligning it as best as possible before installation to make process faster and easier. It is best to use a set of jack stands, or other item that can assist in holding the rock slider in place.
- 4.) Before mounting, reach your arm inside the frame and position the nut plate to align with the hole on the bottom of the frame which a 3/8" countersunk bolt will go into. Also, detach two bolts holding the brake lines in place near the back of the frame.



- 5.) Align front hole in the bottom of the rock slider mounting plate with this newly positioned nut plate. When the hole is aligned with the nut plate, finger tighten a 3/8" countersunk bolt into this nut plate through the counter sunk hole in the slider mounting plate. Leave the bolt loose for now to allow room for adjustment.

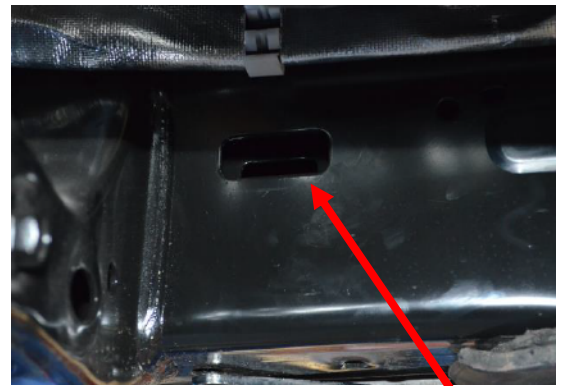
- 6.) To have room to place remaining 4 nut plates on the driver side, it is recommended to temporarily remove the stock gas tank skid for more clearance. To do so, remove the bolts holding on the gas tank skid with the 12mm socket and ratchet



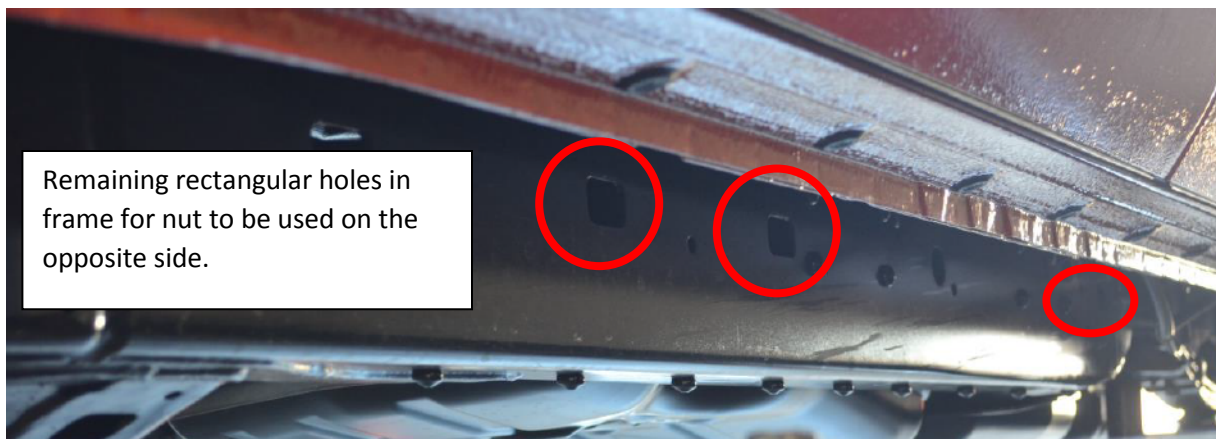
- 7.) Once the gas tank skid is removed, there will be enough room to get the nut plates up to the rectangular holes in the frame that align with the holes in the slider mounting plate. For the front most hole in the slider mounting plate, the same method of reaching into the frame used for the bottom front most nut plate will be used again. There is a black plastic cover on the inside of the frame in this area which can be removed in order to help align the nut plate better.



Removable plastic cover allowing easier access to align nut plate on the backside of the frame.

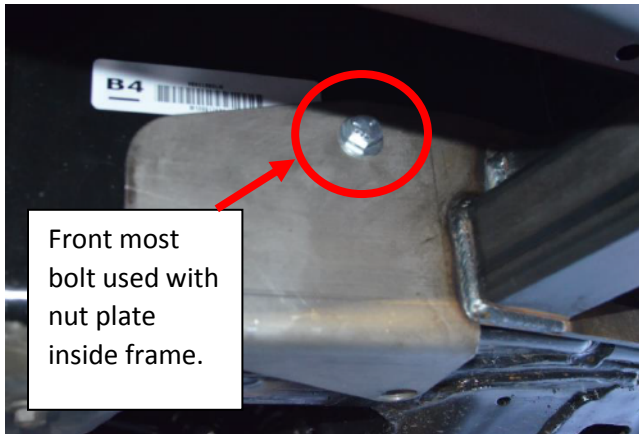


Cover removed for easier alignment.

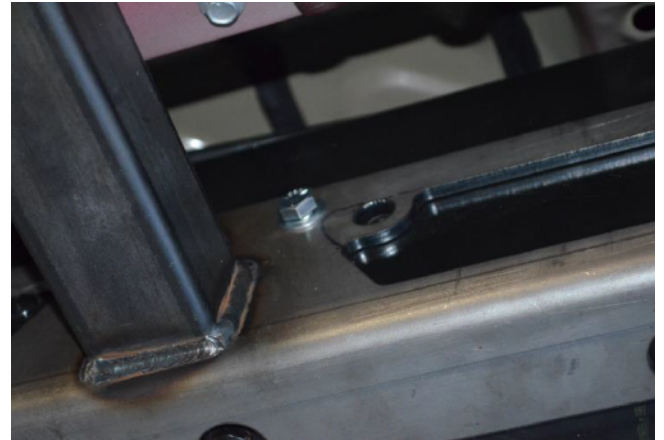


Remaining rectangular holes in frame for nut to be used on the opposite side.

- 8.) Starting from front to rear, position nut plates and loosely tighten bolts, using a flat washer between the bolt head and the slider plate. Leave bolts loose until all are started. It is then okay to fully tighten bolts down once satisfied with the way the slider sits on the truck.



Front most bolt used with nut plate inside frame.



Nut plate on backside of frame covering rectangular hole.

- 9.) Once all nut plates are positioned and bolts tightened, re-install the brake line clips with the stock bolts into the stock location on top of the slider mounting plate.



- 10.) After the 4 bolts in the sides of the slider mounting plate are tightened and slider is aligned properly, drill out the remaining four holes in the bottom of frame, using the slider mounting plate as a template with the 3/8" drill bit.



- 11.) Once holes are drilled, use the 3/8" countersunk bolts with washer, lock washer, and nut to finish securing the slider to the frame.
- 12.) Repeat above steps on opposite guide to complete installation.

TORQUE SPEC GUIDE:

3/8" Bolt – 37 lb-ft