

INSTALL INSTRUCTIONS



2.7L TACOMA POWER FLOW POWER STEERING KIT

130101-1-KIT

KIT CONTENTS



Note: This power steering upgrade kit only works after you have removed your rack and pinion steering system and have replaced with an 85-96 IFS steering box.



RECOMMENDED TOOLS

3/8" Drive Ratchet

3/8" Extension

11/32" drill bit

Drill

Wrenches

1/2"

7/8"

17mm

18mm

19mm

Crescent

Sockets

12mm

14mm

CAUTION

1. Read all instructions completely and carefully before you begin.
2. Check to make sure the kit is complete and that no parts are missing (refer to the Kit Contents List on the first page of these instructions). If anything is missing, please contact Trail-Gear at 559.252.4950 or 1.877.4X4.TOYS.
3. Park vehicle on a clean, dry, flat, level surface and block the tires so the vehicle can not roll in either direction.

INSTALL INSTRUCTIONS



STEP 1

Disconnect battery.

STEP 3

Grill must be removed at this point.

STEP 5

Remove radiator.

STEP 7

Remove ps pump and ps pump bracket.



STEP 2

Drain radiator.

STEP 4

Remove the lower fan shroud - 2 clips.

STEP 6

Remove belt.

STEP 8

Disconnect and plug vacuum ports.



STEP 9

Install new pump bracket.



STEP 10

Install new pump.



INSTALL INSTRUCTIONS



STEP 11

Using the reservoir bracket as a template, mark holes on fender and drill (11/32") Note: The top of the bracket should be just above the fuse box.



STEP 12

Install reservoir.



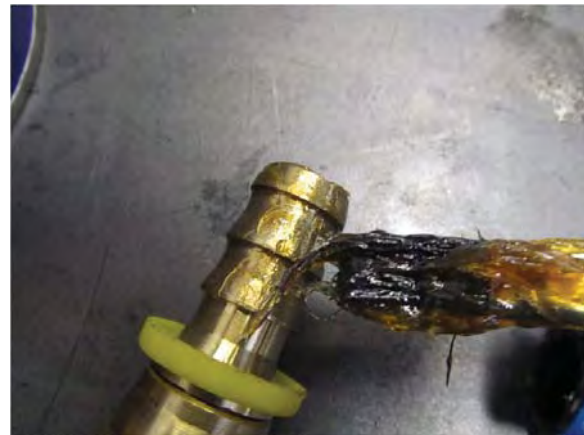
STEP 13

Temporarily install suction line, and barbed fitting. Mark the hose to the proper length, and trim.



STEP 14

Apply light grease to barbed fitting and push hose over fitting.



STEP 15

Install new hose.



STEP 16

Install high pressure fitting onto the high pressure port on the steering box



INSTALL INSTRUCTIONS



STEP 17

Install high pressure hose.



STEP 18

Install cooler with round rubber spacers between the cooler and the A/C condenser .



STEP 19

Route the hoses through a hole in the radiator support.



STEP 20

Using hose clamps route steering box return line to top of cooler port and clamp.



STEP 21

Route lower hose to power steering reservoir

STEP 23

Re-install radiator and lower shroud.

STEP 25

Fill radiator.

STEP 26

Fill the power steering system with power steering fluid. When filling the reservoir, do not fill to the top, allow about 1/2" for fluid expansion due to heat. It will take some time to fully bleed the system the first time. With the vehicle on jack stands and tires completely off the ground, engine not running, turn steering wheel from lock to lock several times and then refill the power steering reservoir with fluid. Note, this is done so that the power steering pump does not get started dry, which can cause damage to the pump. Now you're ready to start the engine and turn the steering wheel from lock to lock, we recommend that you run the motor for about 5 minutes at a time during the bleeding. Allow the oil to set until all the bubbles have separated out of the oil, then run the motor again for 5 minutes. Repeat this procedure until the oil runs without foam or bubbles.

STEP 22

Re-install belt.

STEP 24

Re-install grill.

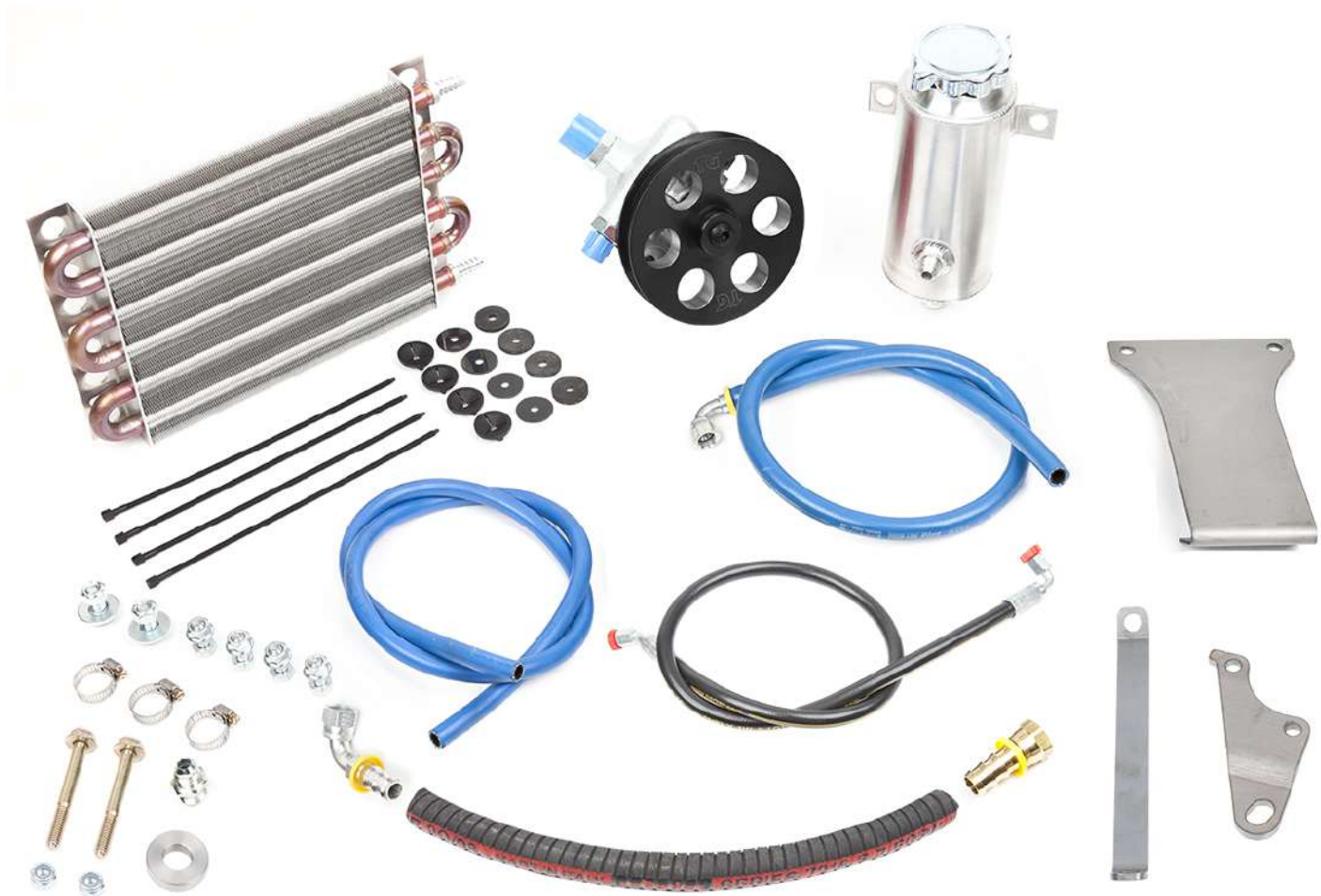
INSTALL INSTRUCTIONS



TACOMA 3.4L PS PUMP KIT (130105-1-KIT)

KIT CONTENTS

*The color or appearance of some items in this kit may differ slightly from the photo.





RECOMMENDED TOOLS

Metric Socket Set
Metric Wrench Set
Ratchet/Extension
Screw Drivers - Flat/Philips
Crescent Wrench
Drill
3/4" Uni-bit
15/16" Wrench
Hose Cutter

CAUTION

1. Read all instructions completely and carefully before you begin.
2. Check to make sure the kit is complete and that no parts are missing (refer to the Kit Contents List on the first page of these instructions). If anything is missing, please contact Trail-Gear at 559.252.4950.
3. Park vehicle on a clean, dry, flat, level surface and block the tires so the vehicle can not roll in either direction.

Never use ATF fluid, or a semi-synthetic blend. This will void the warranty. Ok to use standard power steering fluid or a full synthetic.

INSTALL INSTRUCTIONS (CONT'D.)



STEP 1 - REMOVE BATTERY

Remove the battery.



STEP 2

Remove Air Box, Disconnecting vacuum lines, and electrical connections as needed



STEP 3

Remove marker lights and grill.



STEP 3 - CONTINUED



STEP 4

Drain radiator, disconnect hoses, remove lower fan shroud, and remove radiator.



STEP 5

Remove power steering pump retaining main bolt for later use.



INSTALL INSTRUCTIONS (CONT'D.)



STEP 6

Fasten Tension Bracket to PS Pump using 5/16 x 2 3/4" bolt, 8mm bolt, and washers. Install New Power Steering pump using retained main bolt and spacer.



STEP 6 - CONTINUED

Install New Power Steering pump using retained main bolt and spacer.



STEP 7

Fasten reservoir to bracket, and support bracket with 3/8" nuts and bolts



STEP 8

Temporarily install air box making sure reservoir location is clear of air tube. Mark hole locations, and drill through inner fender with 8mm drill bit.



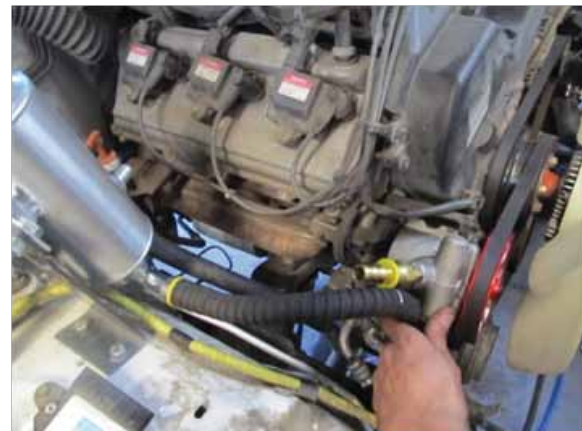
STEP 9

Fasten to inner fender with 3 8mm bolts and nuts.



STEP 10

Connect 90° JIC fitting to Superflex hose, and attach to bottom of reservoir. Connect #10 Barbed fitting to pump. Mark Superflex hose and trim to desired length and connect to barbed fitting.



INSTALL INSTRUCTIONS (CONT'D.)



STEP 11

Fasten Cooler to radiator, and cut holes through fan shroud in line with cooler connection points. **NOTE: Hoses shown for illustration purposes only.**



STEP 12

Temporarily install radiator. Connect return line (#6 hose with 90° fitting) to reservoir and run hose to lower cooler connection point through lower hole in fan shroud. Mark hose and cut to necessary length. Remove radiator, and connect hoses to cooler with hose clamps.



STEP 13

Install radiator and connect upper return hose to the steering box with hole clamps and lower return hose to reservoir.

STEP 14

Re-assemble remaining components in reverse order.

STEP 15

Fill the power steering system with power steering fluid. When filling the reservoir, do not fill to the top. Allow about 1/2" for fluid expansion due to heat. It will take some time to fully bleed the system the first time. With the vehicle on jack stands and tires completely off the ground, engine not running, turn steering wheel from lock to lock several times and then refill the power steering reservoir with fluid. Note, this is done so that the power steering pump does not get started dry, which can cause damage to the pump. Now you're ready to start the engine and turn the steering wheel from lock to lock, we recommend that you run the motor for about 5 minutes at a time during the bleeding. Allow the oil to set until all the bubbles have separated out of the oil, then run the motor again for 5 minutes. Repeat this procedure until the oil runs without foam or bubbles.