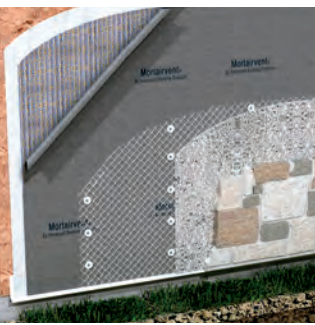


2019

ADVANCED
Building Products Inc.

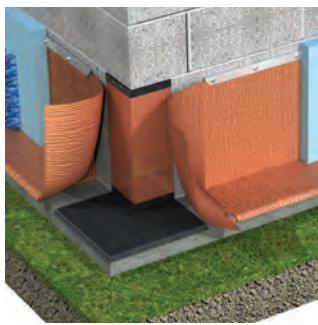
**THE CLEAR CHOICE™ IN ALLOWING
MOISTURE TO DRAIN, NOT REMAIN®**



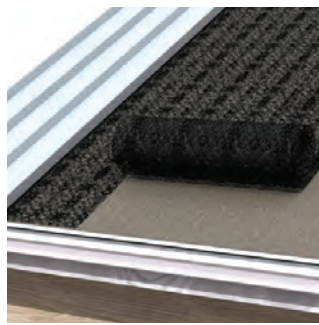
**RAIN SCREEN
DRAINAGE MATS**



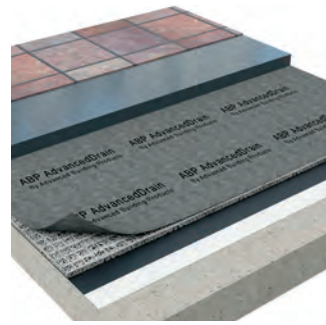
**MORTAR
DEFLECTIONS**



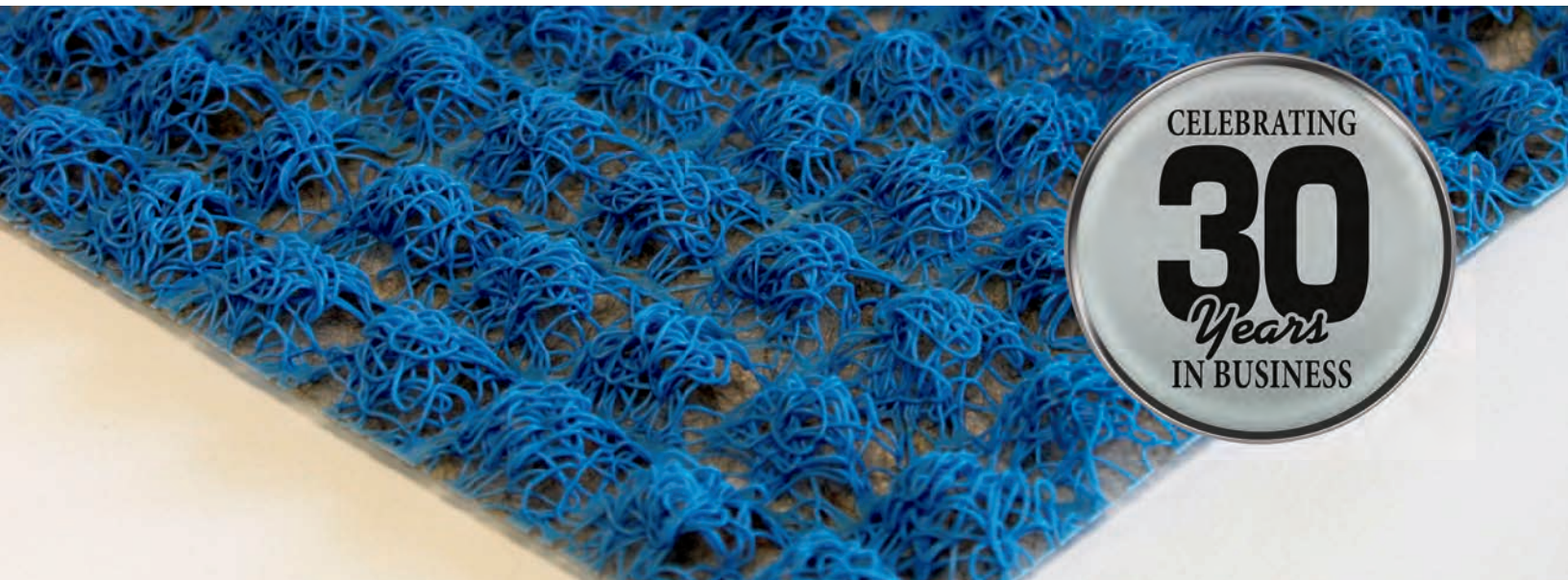
**FLASHINGS &
ACCESSORIES**



**ROOF
VENTILATION**



**HORIZONTAL DRAINAGE
APPLICATIONS**



CELEBRATING
30
Years
IN BUSINESS

advancedbuildingproducts.com

Letter from the President...

Welcome to Advanced Building Products, Inc. (ABP). We appreciate you taking the time to look through our 2019 catalog. We know there are many options when it comes to moisture protection products, but there is only one ABP. Before flipping through the pages of this catalog, let me tell you a little bit about our company.


We are a family owned manufacturer of moisture protection products for the commercial and residential construction markets. Basically we make the products that allow moisture to DRAIN, NOT REMAIN®. When you call ABP you speak to a real person! No automated switchboard asking you to spell the last name of the person you want to speak with. We answer your question right at the point of your phone call. Your time is valuable...we won't waste it.

ABP was formed in 1989. For many years we were a copper flashing manufacturer. Over the past 30 years we have expanded considerably into new technologies. To date we are the fastest growing manufacturer of entangled net technologies in the United States. We manufacture 24 hours a day 5 days a week. This growth has allowed us to attract some of the top talent in the industry, both on the sales side and manufacturing side.

Please take the time to review our 2019 catalog. We are actively working on new products, so please visit our newly designed website for the most up to date information. Here you will also find a list of our staff. If you follow social media, check in from time to time. We will be offering product incentives to those that follow us on Twitter, Facebook, etc.

As always, we appreciate the continued support of our longtime customers and we want to welcome those of you that are new to the Advanced Building Products family.

Sincerely,



Keith A. Lolley
President

The History of Advanced Building Products, Inc.

- 2018** Advanced Building Products launches two new products. RAM Vent™, our radon abatement mat, and Watairvent® furring strips, our first patented product since Mortar Maze®. Keith Lolley and Jason Roy are promoted to President and Vice President.
- 2017** Advanced Building Products purchases 6 acres of land for future expansion.
- 2016** Advanced Building Products installs a new die cutting press.
- 2015** Advanced Building Products erects a 10,000 sq. ft. addition to our existing manufacturing facility.
- 2014** Advanced Building Products increases manufacturing capabilities once again to support our geotextile division. All product printing is moved in house.
- 2013** Advanced Building Products builds a new 9,000 sq. ft. R&D facility.
- 2011** Advanced Building Products adds to our geotextile manufacturing capabilities
- 2009** Advanced Building Products expands manufacturing capabilities
- 2007** Advanced Building Products puts our first geotextile line into production
- 2005** Advanced Building Products erects an additional 7,000 sq. ft. on to our manufacturing plant
- 2002** Advanced Building Products builds new manufacturing plant
- 2001** Advanced Building Products acquires AFCO Products (Sommerville, MA)
- 2000** Advanced Building Products acquires Phoenix Building Products (Horsham, PA)
- 1999** Advanced Building Products patents the first non-asphaltic flexible laminated copper flashing, Copper Sealtite 2000®.
- 1989** Advanced Building Products was born servicing OEM flashing accounts.

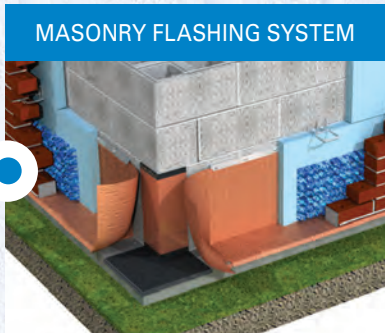


TABLE OF CONTENTS

Below Grade Drainage

ABP Advanced Drain® <i>vertical and horizontal drainage mat</i>	03
RAM Vent™ <i>radon abatement mat</i>	04

Sidewall Applications

The Importance of Rain Screen Technology	05
Mortairvent® <i>rain screen drainage & ventilation mat</i>	07
Installation Details	09
Installation Photos	10
Watairvent Furring Strips® <i>drainage & ventilation for wood siding</i>	11

Roof Drainage & Ventilation

R-Vent® <i>metal roofing ventilation mat</i>	12
CedAir-Mat® <i>wood roofing ventilation mat</i>	12
Ground Guard® RR <i>root reinforcing mat</i>	13
Ground Guard® VM <i>green roof growing mat</i>	13

Mortar Deflection

Mortar Break® DT <i>dovetail design</i>	14
Mortar Break® <i>one-inch cavity walls</i>	15
Mortar Break® II <i>two-inch cavity walls</i>	15
Mortar Catch® <i>for odd sized cavity airspaces</i>	15
Mortairvent® CW <i>all wall mortar deflection</i>	16

Flashing

Copper Sealrite® 2000 <i>copper thru-wall flashing</i>	17
Cop-R-Corners	17
Cop-R-End Dams	17
Sealtite Sealant	18
Sealtite Sealant Tape	18
Cop-R-Shield™ PC <i>deck flashing and termite shield</i>	19
Strip-N-Flash™ <i>self adhering membrane</i>	20
Moistseal®	20

Accessories

Weep Vents	21
Weep Tubes	21
Weep Mesh	21
Weep Screed	21
Grout Catch®	22
Termination Bars	22

ABP AdvancedDrain® 
Prefabricated Composite Drain

AdvancedDrain® is our multi-purpose drainage and ventilation mat used in a number of applications. Available in 1/8", 1/4", 3/8", and 1/2" thicknesses, these drainage composite mats consist of parallel geometric drainage channels backed with a nonwoven filter fabric designed to eliminate hydrostatic pressure from behind below grade foundation walls, retaining walls, and planters.

AdvancedDrain® is produced from an extruded polymer matrix of randomly entangled monofilaments. The polymer matrix is then shaped into a series of parallel channels designed to allow air and moisture flow in all directions. A nonwoven filter fabric is then heat bonded to the entangled net to prevent soil from entering the matrix of the system, while providing ample air and moisture flow.

Applications

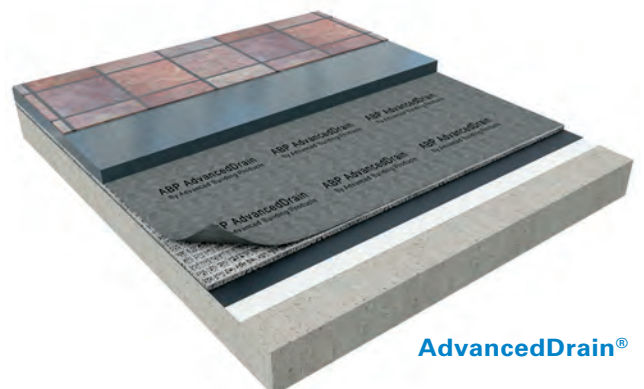
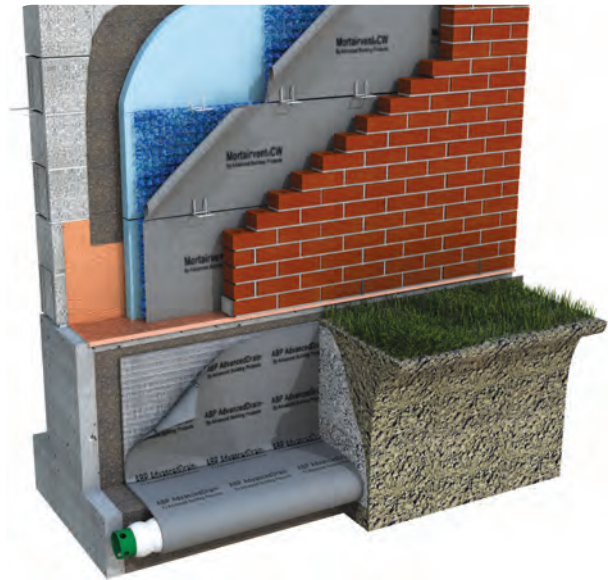
- » Residential and commercial foundation walls
- » Retaining walls
- » Planters
- » Plaza decks, walls, and balconies
- » Green Roofs

Features and Benefits

- » Filtration and drainage in one package.
- » Lightweight, easy to handle and install.
- » Installation in either vertical or horizontal directions.
- » Simple installation with either construction adhesive or termination bar.
- » Sufficient fabric overlap for sealing adjacent panels with construction adhesive to prevent soil intrusion at the joints.
- » Polymer core resistant to most known solvents and chemicals including acids and bases.
- » Convenient working width and roll length.

Packaging:

.125" x 39.5" x 150'	1 roll	10 rolls per pallet
.250" x 39.5" x 135'	1 roll	8 rolls per pallet
.375" x 39.5" x 100'	1 roll	8 rolls per pallet
.500" x 39.5" x 75'	1 roll	8 rolls per pallet

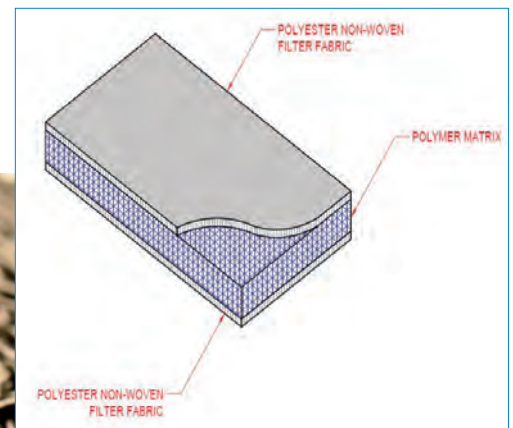
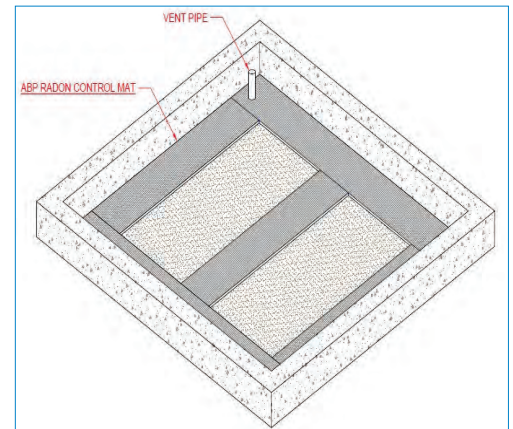
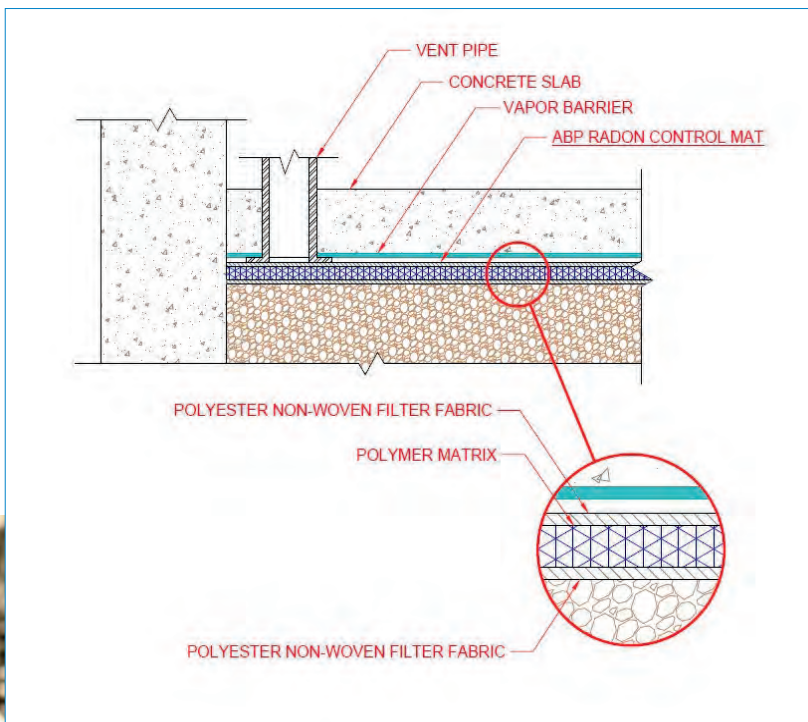


RAM Vent™ Radon Abatement Mat

RAM Vent™ is a lightweight entangled geomatrix manufactured for use in an active radon mitigation system. RAM Vent™ is manufactured with a heat bonded filter fabric on one or two sides allowing air to flow freely based on our 95% open entangled design.

Benefits

- » RAM Vent™ has a high compressive strength.
- » Made from Nylon 6, the filaments resist most chemicals and solvents.
- » Material is .8" thick and 18" wide by 50'.
- » Our high air flow system reduces the level of radon up to 97%.
- » The 95% open air space gives a much higher air flow rating when compared to aggregate.



THE IMPORTANCE OF RAIN SCREEN TECHNOLOGY

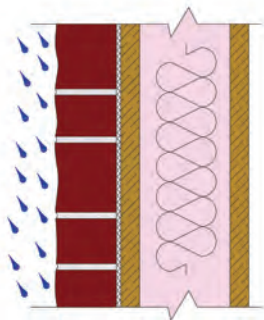
Deflect, Drain, & Dry

Moisture is absorbed by the cladding or enters through surface cracks in the veneer or mortar joints. Capillary action draws the moisture further into the wall assembly.

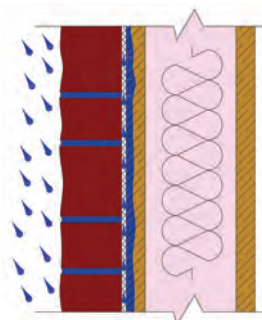
Wind swept rain saturates the exterior cladding.

Residual water vapor is removed by convective air currents within the ventilated airspace created by the rain screen. The airflow within this space also accelerates drying of the exterior cladding.

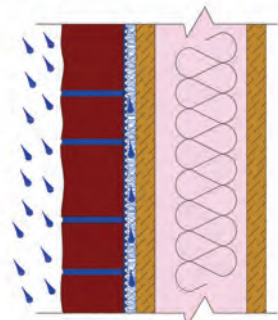
Moisture drains down the rain screen surface and out of the wall via a weep screed at the bottom of the wall.



Rain and moisture saturate the wall exterior and travel inward through cracks or gaps in the siding or are absorbed by the siding material itself.



Without a rain screen, moisture is trapped between the exterior siding and sheathing creating an environment for mold growth and eventual structural failure.



With a rain screen, an airspace is created between the siding and the weather resistant barrier. This airspace allows moisture to drain from the wall assembly and airflow within the cavity dries the sheathing and exterior siding.



mortairvent®

Advanced Rain Screen Solutions

The Clear Choice™

What is a rain screen? A rain screen is a pressure-neutralized airspace between the structural envelope and the exterior cladding that promotes drainage and ventilation of moisture from the wall system. The air pressure difference across the exterior cladding is a significant force causing the infiltration of air and water on windward facades. The moderation of this pressure neutralizes the forces that draw water into the assembly. Ventilation through the airspace removes water vapor and enhances drying between the sheathing and exterior cladding. Note: Engineered Polymeric drainage & ventilation mats should be in compliance with ASTM E2925.

The importance of building with an engineered polymeric drainage & ventilation mat for both cavity and non-cavity wall applications

Engineered polymeric drainage & ventilation mats, such as Mortairvent®, are specifically designed to manage moisture within wall systems and help mitigate potential damage often caused by moisture intrusion. Roughly 90% of all wall failures are due to moisture related issues. Wet wall components can

lead to premature failure of wall systems. Since many wall claddings are not water tight, managing water, as either vapor or liquid, has become a critical design characteristic. The issue is not if water will penetrate, but how to handle the water when it does.

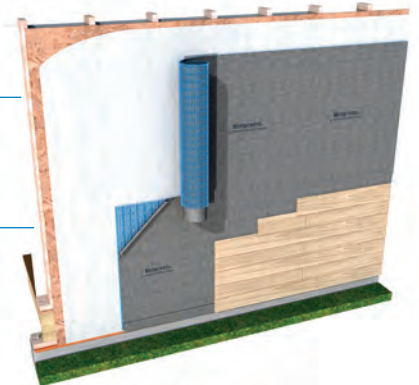
Rolled Rain Screen products add two key performance features to a wall system: drainage and ventilation. The drainage space allows the rapid passage of bulk water harmlessly to the exterior, while ventilation provides an enhanced capacity to swiftly dry and moderate humidity within the cavity.

When choosing which rain screen is right for the job, be sure to ask if the product has been tested in accordance with ASTM E2925. Our Mortairvent® has been tested to the strict criteria of ASTM E2925. Engineered polymeric drainage & ventilation mats can significantly reduce the risk of wall deterioration and improve the durability of the wall system. Contact Advanced Building Products if you would like to schedule an AIA approved seminar.

Mortairvent® Outperforms Traditional Wooden Furring Strip Methods

- » Furring strips can create hot-spots and thermal bridging along stud locations.
- » Furring strip attachment may cause house-wrap to “balloon”, thereby reducing air movement in intended rain screen cavity.
- » Cupping & bowing of furring strips may lead to uneven surfaces for masonry applications.
- » Wood traps moisture, supports growth of mold and causes “ghosting” or vertical telegraphing of furring locations to outside surfaces.
- » In masonry veneer applications, an additional layer of building paper must be installed between the wood, lath, scratch coat, and the furring strips so as to keep mortar from entering airspace and impeding air flow and drainage. Mortairvent® has a mortar deflection fabric already attached.

Mortairvent is simply rolled out horizontally and tacked in place.



Wooden furring strip installation is more labor intensive and costly.



Once moisture gets in, it has nowhere to go, creating the perfect environment for mold growth and eventual structural failure, as seen here.

DON'T LET THIS HAPPEN TO YOU!





mortairvent®

Advanced Rain Screen Solutions
The Clear Choice™



When building exterior walls with stone, stucco, brick, wood, or fiber cement siding, it is important to use an effective rain screen system that will provide a means for drainage and ventilation. Moisture will find its way into these wall systems by way of cracked mortar joints, gaps or cracks in the surface of the material. Natural absorption of the wood or fiber cement also needs to be considered. Once this moisture penetrates the outer surface of the wall, it becomes trapped in the wall system with no way to escape, creating the perfect environment for toxic mold growth and possible structural failure. Mortairvent® is a drainage and ventilation system specifically designed for use with most exterior siding materials.

Benefits

- » 95% open design creates a continuous capillary break and channel for moisture to drain and accelerates drying of the exterior cladding.
- » Durable polymer material is resistant to most known corrosive chemicals and does not provide a food source for mold or mildew.
- » Minimizes staining, peeling, and blistering of exterior finishes.
- » Lightweight, easy to handle.
- » Made from recycled materials qualifying for LEED credits.
- » Simple and quick to install. Easier and more cost effective than traditional furring strip methods.
- » 2-ply design features a backer fabric that improves the tensile and compressive strength properties of the rain screen. The fabric also serves to deflect mortar when used with stucco or a masonry veneer siding.
- » Meets the National Building Code of Canada.
- » **Tested to ASTM E 2925**



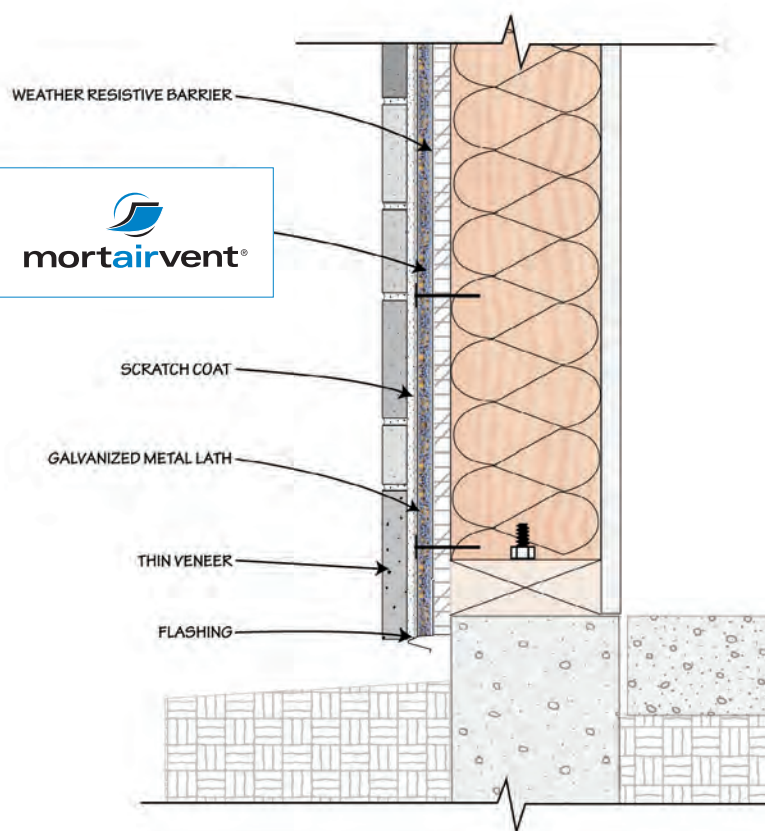
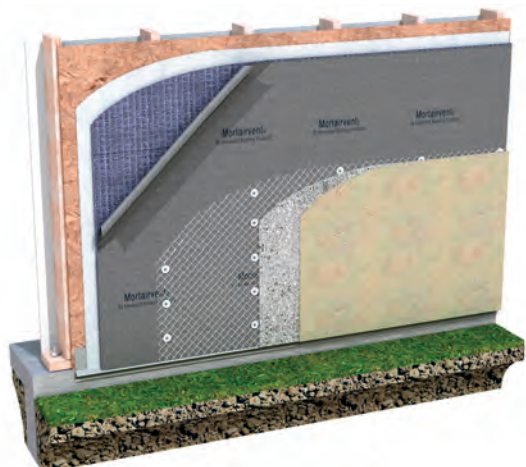
Mortairvent® for all Masonry Veneer Sidings



INSTALLATION INSTRUCTIONS — STUCCO & MASONRY VENEER

- » Apply a weather resistant barrier over sidewall sheathing. Note: some regions may require two layers of weather resistant barrier. Check local codes for more information.
- » Install Mortairvent® after windows and doors have been properly installed and flashed. Starting at the base of the wall, unroll Mortairvent® from right to left with the fabric flap at the bottom, the three-dimensional (blue) polymer matrix against the weather resistant barrier, and the fabric side facing the exterior of building. Staple or nail every three square feet.
- » On the first (bottom) course only, un-fold the fabric flap and tuck it between the (blue) polymer matrix and the weather resistant barrier to create an insect screen.
- » On subsequent courses, butt the blue polymer material together without overlapping. Make sure to pull the fabric flap over the previous course (shingle style) and staple.
- » On top course, invert the roll and unroll left to right with the fabric flap at the top. Unfold the fabric flap and tuck it between the (blue) matrix and the weather resistant barrier to create an insect screen.
- » 2-ply design features a backer fabric that improves the tensile and compressive strength properties of the rain screen. The fabric also serves to deflect mortar when used with stucco or a masonry veneer siding.
- » Apply lath, scratch coat, and stucco or masonry veneer siding over Mortairvent® using manufacturer's recommended fasteners and spacing.

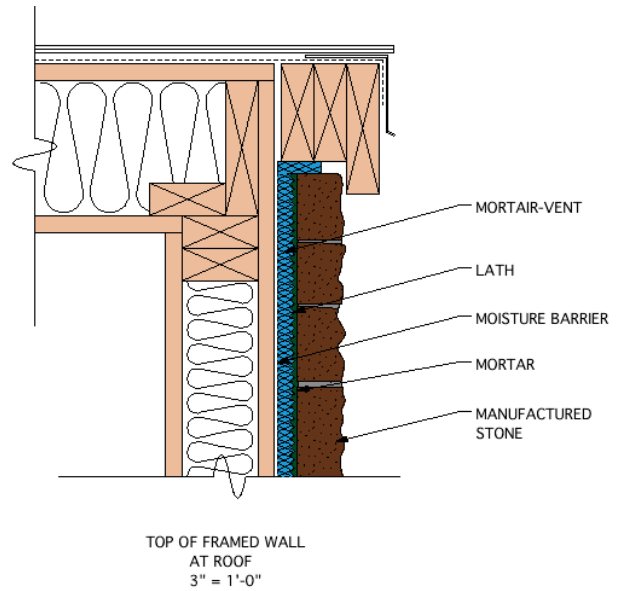
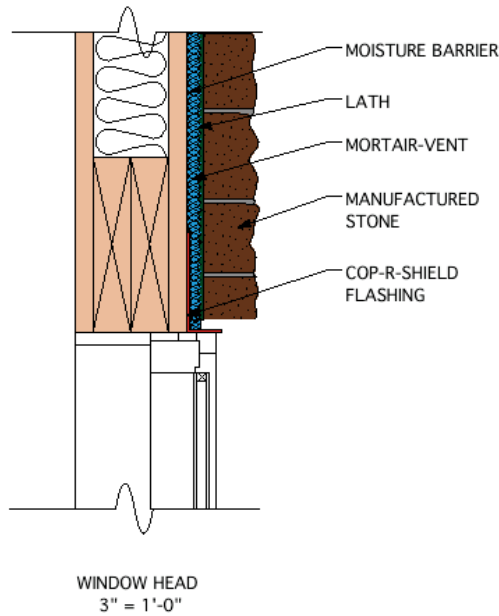
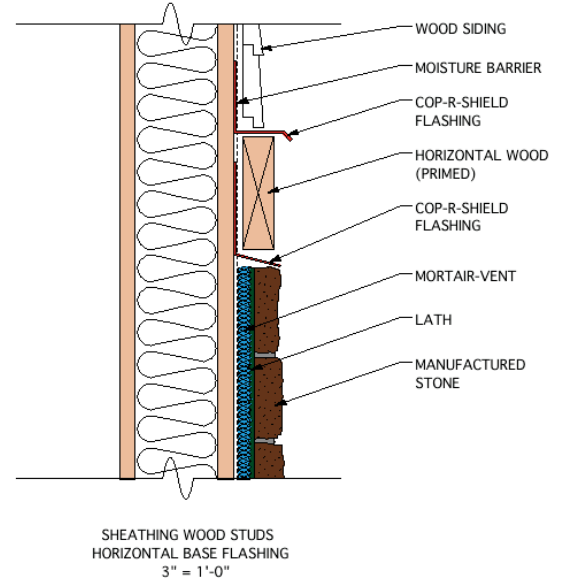
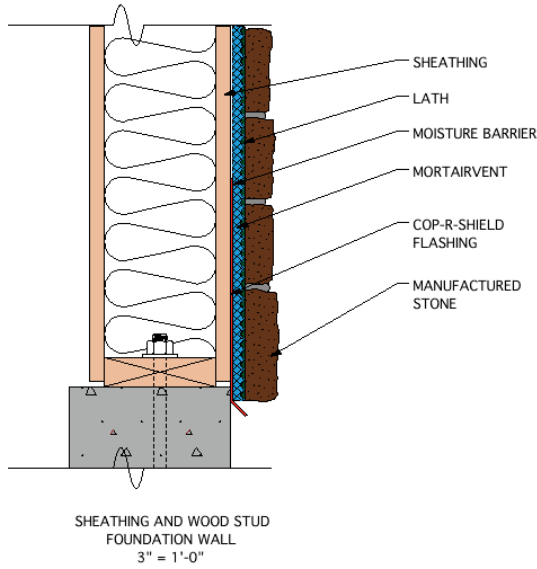
ONE RAIN SCREEN, MULTIPLE SIDINGS



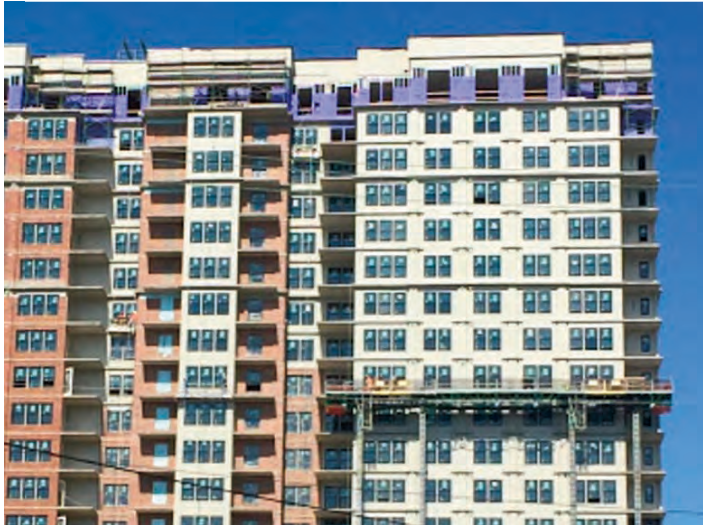
Packaging:

Mortairvent®	.125" - call for additional info	
Mortairvent® 202	.25" - 39" x 61.5' roll	18 rolls per pallet
Mortairvent® 203	.40" - 39" x 40' roll	18 rolls per pallet

INSTALLATION DETAILS



INSTALLATION PHOTOS



Most residential and light commercial structures are built using absorptive claddings. Since trapped moisture is a leading cause of wall failures, it is important to design walls that allow moisture to Drain, Not Remain® trapped behind cladding systems.

When building with clapboard siding, a wooden batten or furring strip is often used to create a capillary break. The concept is solid; however, there are issues with the design and material used in wood furring strips.

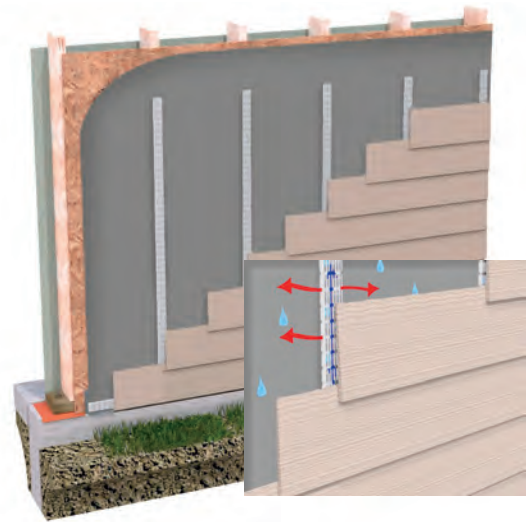
- » Wood is an absorptive material, which can lead to rotting and provide a food source for mold.
- » The surface area of the wood furring strips cover an average of 44% (front and back) of the walls surface area, which means 44% of that surface area can trap moisture.
- » The surface area contact between the furring strip and backside of the cladding can allow ghosting on the outside of the cladding.
- » Wood furring strips allow minimal cross ventilation.

Advanced Building Products has the answer...
 Watairvent® Furring Strips.

The Watairvent® Furring Strip Advantage:

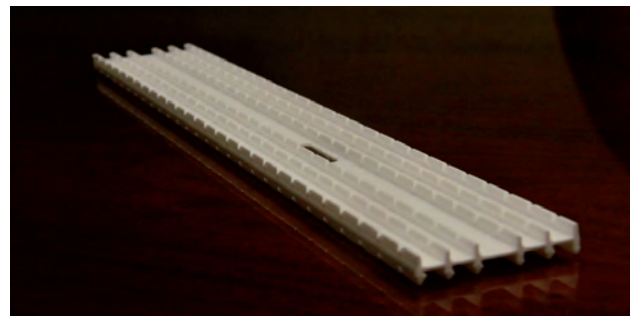
Advanced Building Products has taken the traditional furring strip and redesigned it to function in today's building environment. The benefits include...

- » Manufactured from a mold resistant non-absorptive composite material.
- » Manufactured with dual vertical and horizontal channels on the front and backside of the furring strip. This allows for dual drainage and cross ventilation. The dual channel design reduces surface area contact by 86% when compared to traditional wooden furring strips.
- » Meets the National Building Code of Canada capillary break requirements for high moisture index.
- » Meets or exceeds applicable U.S. Building Codes.
- » Manufactured with fastening slots to allow the differential movement during installation.
- » White in color to match most trim work.
- » Will not become brittle and crack during cold weather installations.
- » Light-weight and easy to install.
- » Helps increase the longevity of wall sheathing and framing by allowing moisture to Drain, Not Remain®.



Core Design of Watairvent® Furring Strips

1. Solid core for structural stability.
2. Vertical channels for proper drainage and ventilation from the backside of the cladding to the front side of the sheathing.
3. Horizontal channels allow for cross ventilation.



Suggested Application

- > Clapboard Siding
- > Cedar Shakes

Product Data / Packaging:

.375" x 1.75" x 8' 50 pieces per box 400 lineal feet

R-Vent® (for metal roof applications)

R-Vent® is a roof ventilation mat designed to create a ventilation space to promote air flow in all directions underneath zinc and other types of metal roofing. R-Vent® is installed on top of the roofing felt to create a capillary break between the roofing felt and the metal roofing itself. This capillary break reduces the amount of heat transfer that otherwise would exist in these applications. Reducing the temperature differential between the outside environment and the roofing components reduces the ability for moisture to condense within the roofing components, which often leads to premature roof failures.

R-Vent® is extremely flexible and conforms to any contoured surface or roofing material. R-Vent® is highly recommended for commercial or residential metal roof construction.

Benefits

- » Creates an open structure for ventilation.
- » Prolonged life of membrane and roof structure.
- » Reduced sound transmission through panels.
- » Lightweight and easy for installers to handle.
- » Bends and conforms to any type of contoured roof.
- » Maintains a thermal break between roofing & sheathing.
- » UV exposure of 60 days.



Packaging:

R-Vent®
 .361" x 39" x 61.5' 200 sq. ft. 18 rolls per pallet

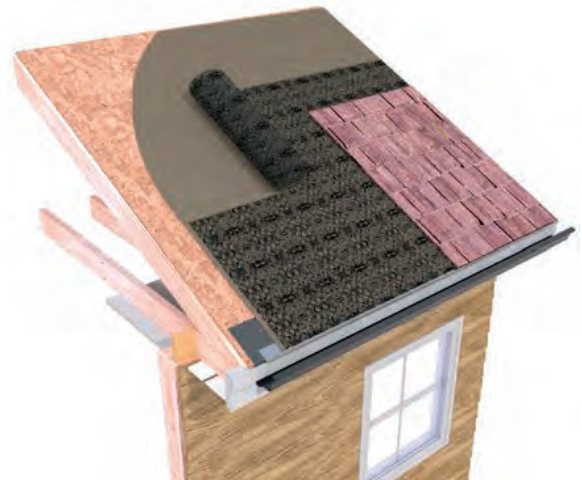


CedAir-Mat® (for wood roof applications)

CedAir-Mat® is a roof ventilation mat designed to create an airspace to promote multi-directional air flow between the roofing material and the sheathing below. Using a thin nylon matrix profile, CedAir-Mat® prolongs the life of the roof structure and membrane by reducing the adverse effects associated with water damage including mold, mildew, or corrosion and deterioration of the roofing material itself. CedAir-Mat® is extremely flexible and conforms to any contoured surface or roofing material (cedar and tile) and is perfect for residential and commercial applications.

Benefits

- » Creates an open structure for ventilation.
- » Prolonged the life of roofing membrane & sheathing.
- » Reduced sound transmission.
- » Lightweight & easy for installers to handle.
- » Bends and conforms to any type of contoured surface.
- » Maintains a thermal break.
- » UV exposure of 60 days.



Packaging:

CedAir-Mat®
 .407" x 39" x 61.5' 200 sq. ft. 12 rolls per pallet

Ground Guard® RR

The Ground Guard® Root Reinforcement Mat provides an effective and eco-friendly choice for securing plant roots in all types of erosion prone areas. The tough black nylon mesh has an open structure which makes a perfect environment for dirt and plants to embed and entangle — permanently securing plant roots in place. Once the root system is established, you have a permanent solution for anchoring vegetation. The Ground Guard® Root Reinforcement Mat is a natural choice for vegetated roof applications requiring soil and root stability.

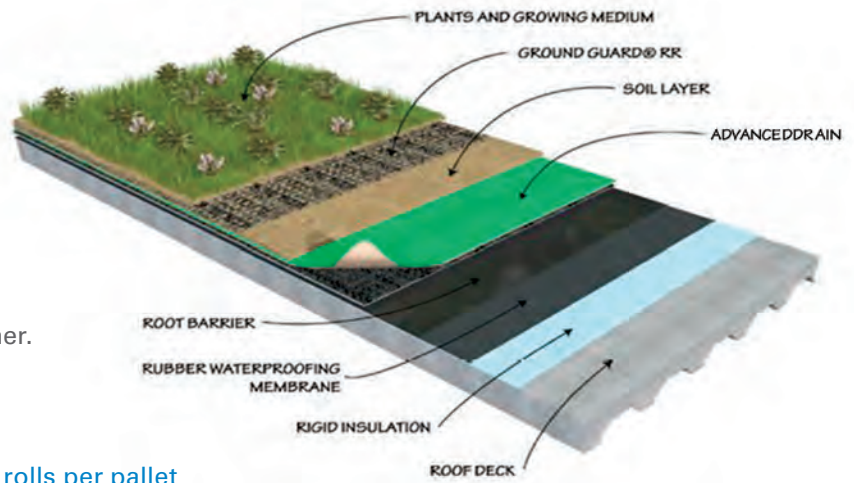


Applications

- » Channels & slopes
- » Green roofs / roof gardens
- » Sloped or irregular shaped roofs
- » High wind environments
- » Eco-habitats

Benefits

- » Permanently secures plant roots.
- » Enhances plant growth and survival.
- » Lightweight and easy to handle rolls.
- » Open structure is easy to soil fill.
- » Dimensionally stable in warm or cold weather.



Packaging:

Ground Guard® RR .40" x 39" x 100' 8 rolls per pallet

Ground Guard® VM



Ground Guard® VM is an eco-friendly growing mat designed for use with pre-vegetated systems requiring extra soil and root stability. The flexible, open structure makes a perfect environment for dirt and plant roots to embed and entangle while the filter fabric helps hold soil in place. Once the root system is established, you have a permanent solution for anchoring vegetation to facilitate transport and installation at the jobsite. Ground Guard® VM is available in .40 (10 mm) & .625 (16 mm) thicknesses.

Benefits

- » Plants can be field grown off-site in matting.
- » Permanently secures plant roots.
- » Enhances plant growth and survival.
- » Easy to install vertically or horizontally.
- » Plants can be grown directly in matting.



Packaging:

Ground Guard® VM .40" x 39" x 100' 325 sq. ft. 8 rolls per pallet
 .625" x 39" x 100' 325 sq. ft. 8 rolls per pallet

Mortar Break® DT (Dove Tail)

Mortar Break® DT is our multi-level mortar deflection system for cavity wall construction that breaks up mortar on multiple levels. Our design gives specifiers and contractors more options from one manufacturing source.

Applications

For use at all cavity wall flashing locations. The molded polymer core geomatrix design allows moisture to seep down through any mortar droppings and weep out of the wall through mortar free weep vents.

Mortar Break® DT used with properly installed flashing and weep vents, along with good mortar applying techniques, will ensure the performance of a well-designed masonry wall.

Features & Benefits

- » The unique configuration provides uniformity and structural integrity which will stand up to the weight of the mortar.
- » The multi-level design allows mortar droppings to break up on multiple levels allowing for proper drainage to the exterior of the wall system.
- » Will not rot or react with common building materials.
- » Requires no adhesives, fasteners, or special skills to install.

Packaging:

Mortar Break® DT .4"

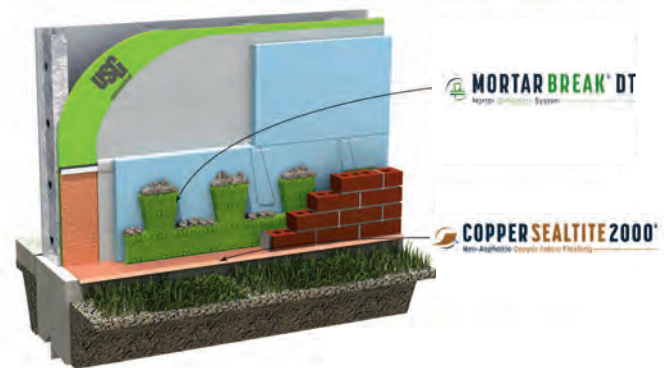
10" x 5' 250 LF per box 24 boxes per pallet

Mortar Break® DT 1"

10" x 5' 100 LF per box 24 boxes per pallet

Mortar Break® DT 2"

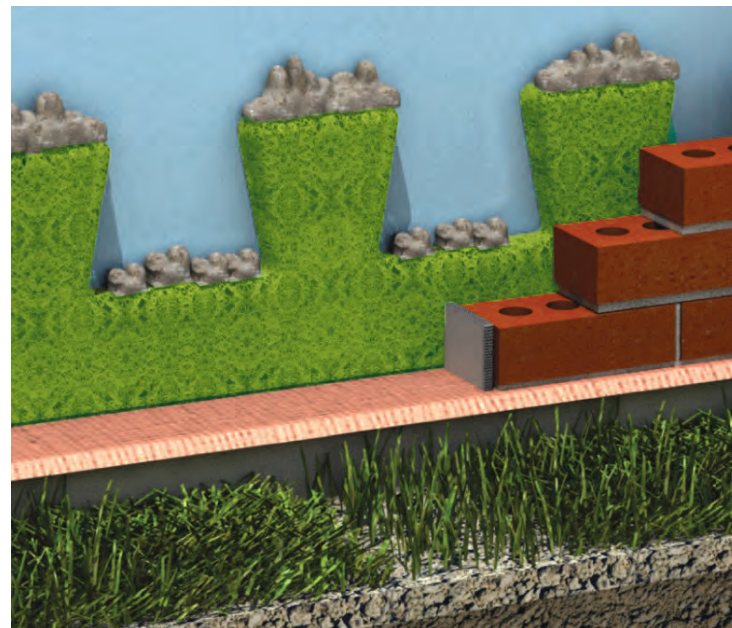
10" x 5' 100 LF per box 24 boxes per pallet



Securock® Glass-Mat Sheathing is a registered trademark of USG



Mortar Break® DT is available for a .4 inch, one-inch or two-inch commercial cavity wall.



Mortar Break[®] and Mortar Break[®] II mortar deflection mats work in conjunction with our masonry flashing and weep vents as a complete and effective moisture management system. Both products suspend excess mortar droppings above the weep holes and allow any moisture trapped within the cavity to seep down the flashing and out of the wall. The system also helps to maintain an airspace for ventilation and drying of the wall cavity.

Mortar Break[®]

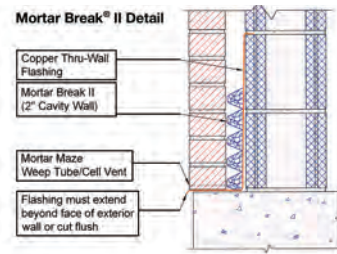
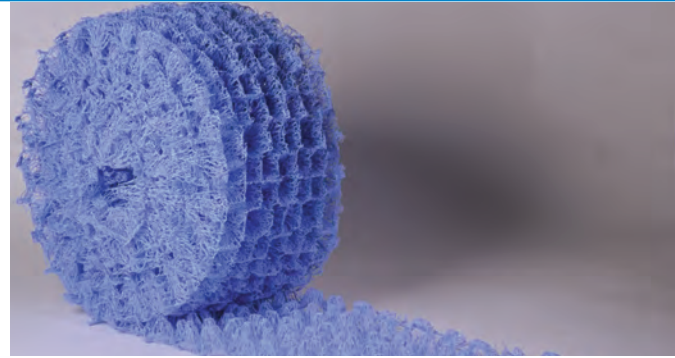
Mortar Break[®] is designed to prevent mortar droppings from blocking drainage channels for 1" (25mm) masonry cavity wall applications. Mortar Break[®] is available in 10", 13", 16" and 39" standard widths by 50 ft. roll (20" wide rolls available per request).

Mortar Break[®] II

Mortar Break[®] II is designed to prevent mortar droppings from blocking drainage channels for 2" (50mm) masonry cavity wall applications. Mortar Break[®] II is available in 10 inch width / 35 ft. roll.

Applications

For all cavity wall flashing locations including the base of the wall, above windows and doors, steel lintels, spandrels and shelf angles, or at any other penetrations or obstructions.



Packaging:

Mortar Break[®]

.8" x 10" x 50' 4 rolls per box 32 rolls per pallet

Mortar Break[®] II

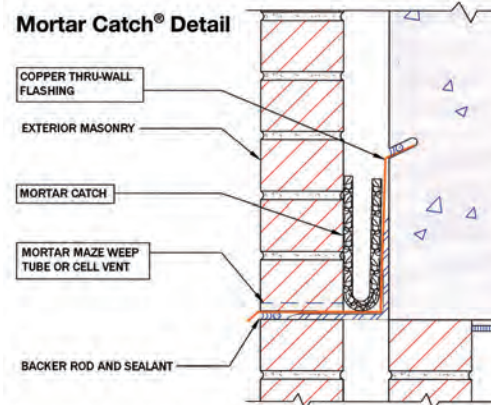
1.6" x 10" x 35' 4 rolls per box 32 rolls per pallet

Mortar Catch[®]

The Mortar Catch[®] mortar deflection mat works in conjunction with our masonry flashing and weep vents as a complete and effective moisture management system. Mortar Catch[®] is designed for use at all flashing locations where wide cavity (greater than 2 inches) construction is required. The open mesh geomatrix design, when shaped in a "U" configuration on the job site, fills the entire cavity to prevent mortar droppings from blocking and clogging base wall and head joint drainage channels. This allows moisture within the cavity to seep down the flashing and out of the wall.

Benefits

- » Deflects mortar droppings allowing moisture to drain.
- » Greater airflow and drainage compared to most plastic mesh based products.
- » Lightweight & easy to install. No mechanical fastening.
- » Available in 10", 20", and 39" inch widths / 100 ft. roll.



Packaging:

Mortar Catch[®]

.4" x 10" x 100' 4 rolls per box 8 boxes per pallet

.4" x 20" x 100' 2 rolls per box 8 boxes per pallet

.4" x 39" x 100' 1 roll per box 8 boxes per pallet



mortairvent® CW

Mortar Deflection & Ventilation System for Cavity Wall Applications

Mortairvent® CW

The Mortairvent® CW Mortar Deflection & Ventilation System is a full height cavity wall product that combines the benefits of rain screen technology through the use of integrated mortar deflection, drainage and ventilation design. The result is an easy to install system that improves the overall performance of the interior while also providing drainage and ventilation for the entire cavity wall.

Mortairvent® CW is available with a mortar deflection fabric. The bonded mortar deflection fabric provides an additional layer of prevention against mortar blockage of the cavity wall drainage plane and provides a dedicated airspace for ventilation and convective drying.

Benefits

- » Improves the overall performance of the entire cavity wall assembly.
- » Maintains a continuous airspace between the outer masonry wall and weather resistant barrier to facilitate moisture drainage and drying.
- » Optional mortar deflection fabric layer provides a dedicated airspace for ventilation and convective drying.
- » 16" wide material is lightweight and easy to install between brick ties. Provides simple one-step installation as brickwork is completed.

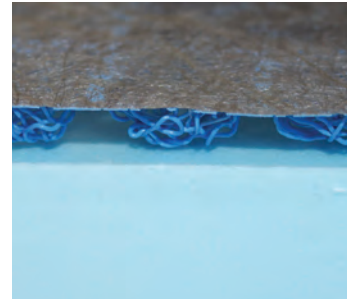
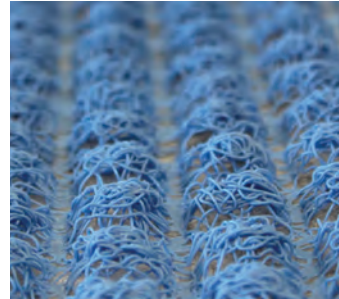
Available Sizes

- » .40" 16" x 40'
39" x 40'
- » .80" 16" x 50'
39" x 50'
- » 1.60" 16" x 25'
39" x 25'



Mortairvent CW 205 / 206 for Masonry Cavity Walls

Securock® Glass-Mat Sheathing is a registered trademark of USG



Mortairvent® CW (.40 in / 10 mm)

Packaging:

Mortairvent® CW 205 & Mortairvent® CW 206

.40" x 16" x 40'	45 rolls per pallet
.40" x 39" x 40'	18 rolls per pallet
.80" x 16" x 50'	20 rolls per pallet
.80" x 39" x 50'	8 rolls per pallet
1.60" x 16" x 25'	20 rolls per pallet
1.60" x 39" x 25'	8 rolls per pallet



COMMERCIAL FLASHING



Copper Sealtite 2000®

Non-Asphaltic Copper Fabric Flashing

Over the years a number of code changes have taken place. Making our walls energy efficient has become a top priority, and with good reason. As a result, our thru-wall flashings have changed. In 1999, we patented the first non-asphaltic copper fabric flashing. We knew in the years to come, a more compatible flashing would be required.

In 2017 we made the decision to switch all of our copper laminated flashings to a more compatible non-asphaltic flashing, Copper Sealtite 2000®. Copper Sealtite 2000® is a copper fabric flashing. We simply replaced the asphalt with a clear coat adhesive making it more compatible with various air barriers, sealants and insulations currently on the market. Copper Sealtite is a better version of copper fabric flashing. Below are the reasons why.

- » Compatible with most air barrier materials.
- » Compatibility with most water based latex sealants on the market.
- » Lighter product, which allows us to put more lineal footage on a roll, allowing for fewer lap joints.
- » Forms a natural copper drip edge.
- » LEED credits.
- » Life of the wall warranty.

Copper Sealtite 2000® is manufactured in 3 or 5 oz. copper bonded on both sides to glass fabric.

Features

Copper Sealtite 2000® is a permanent, premium quality laminated thru-wall flashing consisting of five (5) layers of time proven sustainable waterproofing materials combined under heat and pressure into a single sheet. It is flexible and is easily formed by hand at the jobsite.



Packaging:

Copper Sealtite 2000®

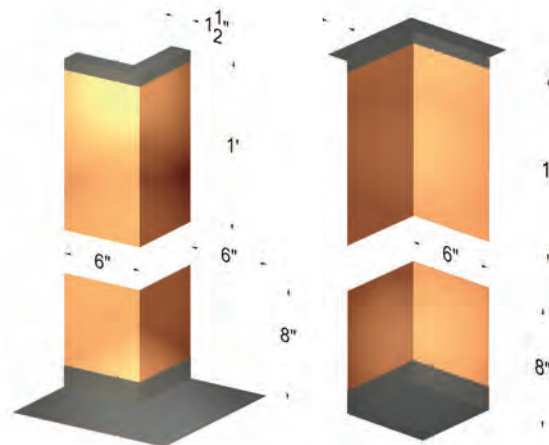
12" x 60'	3 rolls per box	90 rolls per pallet
16" x 60'	2 rolls per box	60 rolls per pallet
18" x 60'	2 rolls per box	60 rolls per pallet
24" x 60'	2 rolls per box	70 rolls per pallet
32" x 60'	1 roll per box	30 rolls per pallet
36" x 60'	1 roll per box	30 rolls per pallet

**25' roll lengths are available upon request.*

Cop-R-Corners™ & End Dams



Advanced Building Products offers pre-fabricated copper corner and end dam assemblies that make flashing masonry corners an easy one-step operation. These corners are available as inside and outside sets as well as individual pieces that are adjustable for varying field conditions with generous flange widths to easily fit different cavity wall applications. Asphalt coating at seams and flanges results in better mortar bonding and watertight peace of mind. Cop-R-Corners™ are constructed from 5oz. copper that will last the life of the structure. Cop-R-Corners™ allow masons to make leak proof corners in a fraction of the time and at a fraction of the cost.



COMMERCIAL FLASHING

Sealtite Sealant

(OSI Pro Series H2U Acrylic Urethane Sealant)

Sealtite Sealant is a high performance acrylic urethane sealant designed for use with Copper Sealtite 2000®. The acrylic urethane formula has better adhesion, flexibility and durability compared to other sealants currently on the market.

Advantages

- » Ultra low VOC content, which qualifies for LEED points and meets stringent State and Federal VOC regulations.
- » Water-based sealant is non-flammable and odor free.
- » Permanently flexible and will not harden, crack or separate over time.
- » Mold & mildew resistance makes Sealtite Sealant ideal for outdoor and high humidity application.



When using Sealtite Sealant, we recommend the external temperature be 40°F or higher. Do not use when rain or freezing conditions are expected within 24 hours of application.

Packaging:

10 oz. tubes 12 per box 140 boxes per pallet

Sealtite Sealant Butyl Tape

Sealtite Sealant Butyl Tape is formulated with high performance butyl elastomers. It is soft, resilient and easily worked by hand; yet it adheres instantly to most normal, clean commercial surfaces. Sealtite Sealant Butyl Tape has excellent weathering characteristics while retaining adhesion and elasticity in both hot and cold environments. Sealtite Sealant Butyl Tape has outstanding webbing and elongation properties along with excellent adhesion to glass, plastic, polyethylene, galvanized, aluminum and aluminum-zinc coated steel. Sealtite Sealant Butyl Tape also has excellent adhesion to siliconized polyester, polyurethane and polyvinyl fluoride painted substrates. It is designed to seal exposed joints against infiltration of air, dust, water and pollutants.

Benefits

- » Retains adhesion and elasticity in both hot and cold environments.
- » Physical properties stand up to 1000-hours of QUV exposure.
- » Minimum shelf life of 1 year when stored in original container at normal warehouse conditions.
- » For application at temperatures from 40° F to 120° F.



Packaging:

.0625 x 1" x 50' 16 rolls/carton 32 cartons/pallet
512 rolls per pallet

COMMERCIAL FLASHING

Cop-R-Shield™ PC

Cop-R-Shield™ PC is our non-asphaltic copper flashing, ideal for deck construction and termite shield protection. Advanced Building Products uses a durable poly laminated to a 3 oz. sheet of copper. The copper and poly technology gives our flashing superior tensile strength and puncture resistance.

Cop-R-Shield™ PC should be installed with the copper side facing the plywood sheathing and the poly facing out.

Features

Cop-R-Shield™ PC is a permanent, premium quality laminated deck flashing consisting of three (3) layers of time proven waterproofing materials combined under heat and pressure into a single sheet. It is flexible and is easily formed by hand at the jobsite.

Benefits

- » Used as a deck flashing and termite shield.
- » Two layers of sealing protection.
- » Compatible with all ACQ pressure treated wood.
- » Perma-Lam technology allows protection from corrosion.
- » The Copper is UV resistant for the life of the structure.
- » Easy to form on-site.

Special Requirements

All materials specified shall be delivered to the site in approved manufacturer's sealed containers bearing manufacturer's name and material identification.

Dimensions

Thickness: 3 oz.
 Roll Width: 8", 10", & 12"
 Roll Lengths: 20' & 60'

Packaging:

8" x 20'	16 rolls per box	27 boxes per pallet
10" x 20'	12 rolls per box	27 boxes per pallet
12" x 20'	12 rolls per box	27 boxes per pallet
8" x 60'	4 rolls per box	48 boxes per pallet
10" x 60'	4 rolls per box	48 boxes per pallet
12" x 60'	4 rolls per box	48 boxes per pallet

*Special sizes are available upon request.



COMMERCIAL FLASHING & MEMBRANES

Strip-N-Flash™

Self-Adhering Cavity Wall Membrane

Strip-N-Flash™ is a 32 mil. self-adhering rubberized asphalt membrane laminated to a high-density polyethylene film. A siliconized release liner prevents the product from sticking to itself in the roll. The factory-controlled quality assures uniform thickness on the job and the name Strip-N-Flash™ assures an excellent water barrier.

Advantages

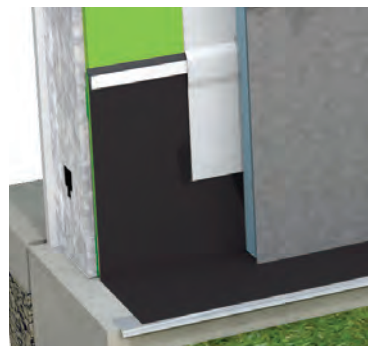
- » The inherent durability of the extra strength 8 mil. cross-laminated polyethylene film resists mechanical damage and ensures the integrity of the rubberized asphalt waterproofing membrane during subsequent wall construction.
- » Strip-N-Flash™ provides a waterproof barrier at flashing areas to prevent wall assembly leaks.
- » Strip-N-Flash™ is fully adhered to the substrate to prevent moisture migration behind the flashing.
- » The unique rubberized nature of Strip-N-Flash™ seals around fasteners.
- » UV exposure rated at 30 days.

Packaging:

12" x 75'	3 rolls per box	90 rolls per pallet
16" x 75'	2 rolls per box	60 rolls per pallet
18" x 75'	2 rolls per box	60 rolls per pallet
24" x 75'	1 rolls per box	30 rolls per pallet
36" x 75'	1 roll per box	30 rolls per pallet



Not recommended in areas where membrane will be subject to continuous sunlight or temperatures in excess of 180°F.



Note:
We recommend using a termination bar, primer and drip edge when installing any self-adhering flashing.

Securock® Glass-Mat Sheathing is a registered trademark of USG

Moistseal®

Moistseal® is a polyvinyl chloride sheet available in a 20 mil. thickness. Recommended for concealed applications only, Moistseal® is an excellent waterproofing membrane. It will show no cracking or flaking when bent through 180 degrees over a 1/32" mandrel and then bent at the same point over the same size mandrel in the opposite direction through 360 degrees. The material conforms to ASTM Standard D-822. Strict quality control assures full weight and uniform thickness.

Available sizes: 20 mil. x 150' rolls

Note: We do not recommend the use of Moistseal as a long-term thru-wall flashing.



Packaging for 20 mil:

12" x 150'	60 rolls per pallet
16" x 150'	45 rolls per pallet
18" x 150'	45 rolls per pallet
20" x 150'	45 rolls per pallet
24" x 150'	30 rolls per pallet
32" x 150'	21 rolls per pallet
36" x 150'	21 rolls per pallet
48" x 150'	15 rolls per pallet

ACCESSORIES

Mortar Maze® Weep Vents

Mortar Maze® Weep Vents ensure positive drainage in all cavity wall construction, while also restricting insects and other debris from entering the head joint. Made from durable polypropylene, Mortar Maze® Weep Vents are available in a range of colors to match the surrounding mortar. Polypropylene tested in conformance with ASTM D2240, D790B, D638, and D1238B.

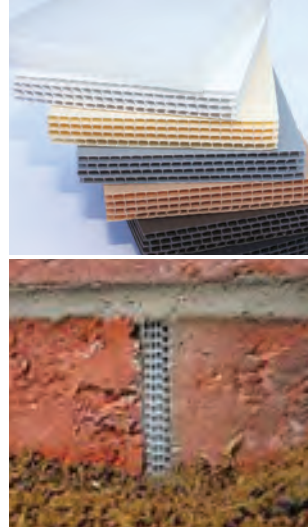
Packaging:

Standard:

.375" x 2.5" x 3.375" 200 per box 80 boxes per pallet

Jumbo:

.375" x 3.5" x 3.5" 200 per box 60 boxes per pallet



Colors: Clear, White,
Tan, Gray, Cocoa,
Brown, Black

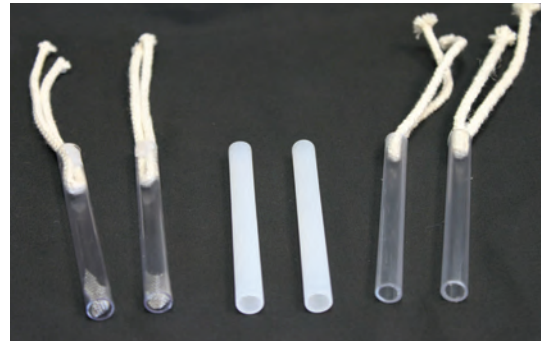
Mortar Maze® Weep Tubes, Wicks & Screens

(with and without wicks)

Mortar Maze® Weep Tubes are now available with or without cotton wicks, or with both cotton wicks and stainless steel screens. Mortar Maze® Weep Tubes are a cost effective drainage device made of durable clear plastic. Placed sixteen inches on center allows for proper moisture drainage.

Packaging:

- .375" dia. x 4" Tubes without wicks are 500 per box.
 - .375" dia. x 4" Tubes with wicks are 200 per box.
 - .375" dia. x 4" Tubes with wicks and screens are 200 per box.
- All Weep Tubes have 75 boxes per pallet

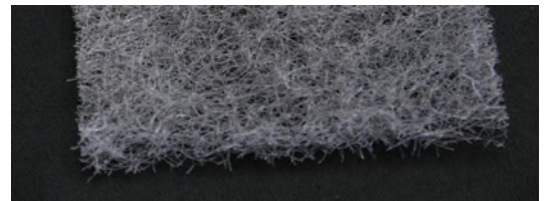


Mortar Break® Weep Mesh

Mortar Break® Weep Mesh is a non-woven, polyester fiber material that promotes drainage and ventilation at weep locations within a masonry cavity wall. **Color:** Gray

Packaging:

2.6" x 3.5" x .5" 125 pieces per box 100 boxes per pallet



Weep Screenshot

Our pre-formed PVC weep screenshot flashing is used with masonry veneer or wood siding to facilitate moisture drainage. Located at the framed wall and foundation joint, the weep screenshot provides an egress for water that has penetrated the exterior finish, weeping from the walls by gravity to the screenshot. Available in white or gray with pre-punched holes for easy installation.

Packaging:

10' 35 pieces per box 20 boxes per pallet



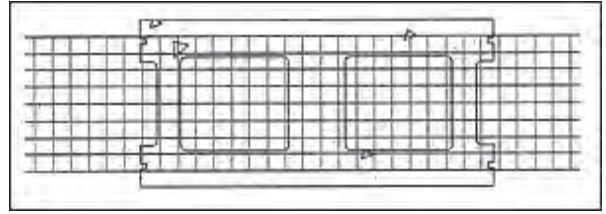
ACCESSORIES

Grout Catch®

Grout Catch® is a strong, lightweight, and economical polypropylene mesh screen that prevents mortar overflow and seepage from designated CMU block cores. The mesh design inherently strengthens the bonding alliance in the mortar joint and allows for greater bonding of the masonry anchor in hollow core construction.

Benefits

- » Deflects and suspends mortar droppings allowing moisture to drain from the wall assembly.
- » Durable polypropylene mesh yields stronger bonding of mortar joints.
- » High strength mesh screen controls mortar overflow, while minimizing mortar waste and cost.
- » Non-corrosive polypropylene mesh with U.V. protective stabilizers prevent deterioration of mortar joints.
- » Lightweight and easy to use. Saves labor and material costs.



Packaging:

8" block	32 rolls per box	24 boxes per pallet
10" block	16 rolls per box	24 boxes per pallet
12" block	16 rolls per box	24 boxes per pallet

Termination Bars

ABP offers three types of termination bars (stainless steel, aluminum, and plastic) designed for use with our masonry through-wall flashing products.

Stainless Steel Termination Bars

Stainless Steel Termination Bars are 1" wide x 8' long. Holes are 8" on center.

Alluminum Termination Bars

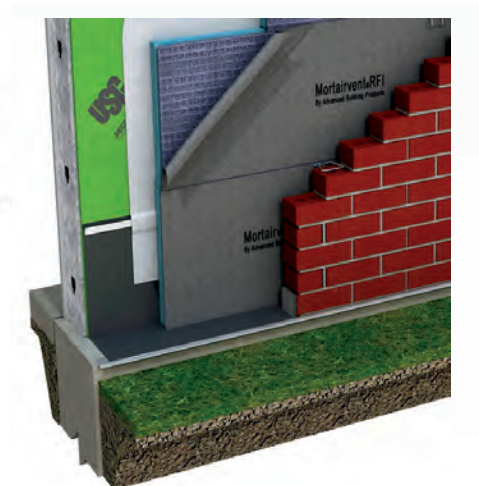
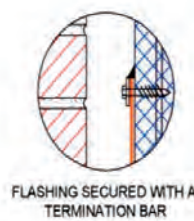
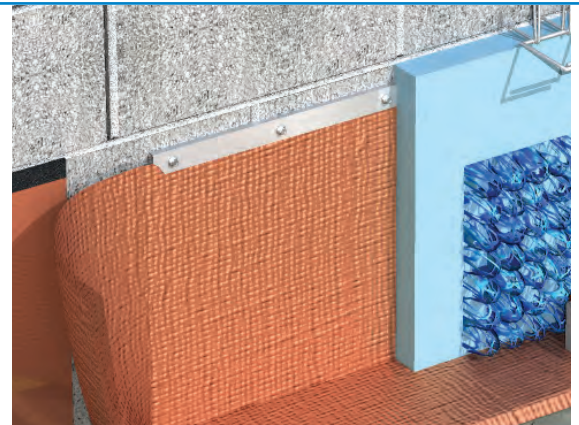
Aluminum (Alloy 6063) Termination Bars are 1" wide x 8' long. Holes are 8" on center.

Plastic Termination Bars

Plastic Termination Bars are 1" wide x 8' long, with no pre-drilled holes.


Packaging:

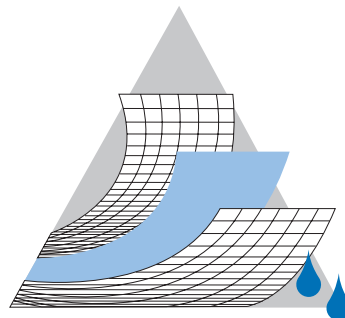
Stainless Steel	1" x 8'	25 pieces per tube
Aluminum	1" x 10'	50 pieces per tube
Plastic	1" x 8'	25 pieces per box



Securock® Glass-Mat Sheathing is a registered trademark of USG.

VISIT ADVANCEDBUILDINGPRODUCTS.COM FOR THE FOLLOWING INFORMATION:

- » Instructional Videos
 - » 3-Part Specifications
 - » SDS Sheets
 - » LEED Documentation 
 - » Installation Instructions
 - » *Moisture Management: Draining the Rain*
Article Reprint from Masonry Magazine
- » *Understanding Engineered Rain Screens*
Article Reprint from Construct Canada
 - » CAD Details & Renderings
 - » Qualified Technical Assistance
 - » Downloadable Products Specifications
 - » Additional Articles by Advanced Building Products



ADVANCED
Building Products Inc.

800-252-2306 • (F) 207-490-2998

e-mail: info@ABP-1.com

© Advanced Building Products 01/2019

advancedbuildingproducts.com