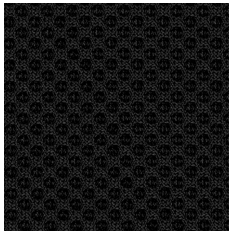


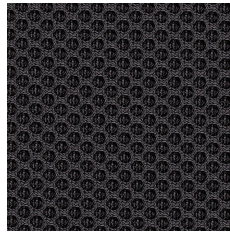
Runner mesh

Cat. 2



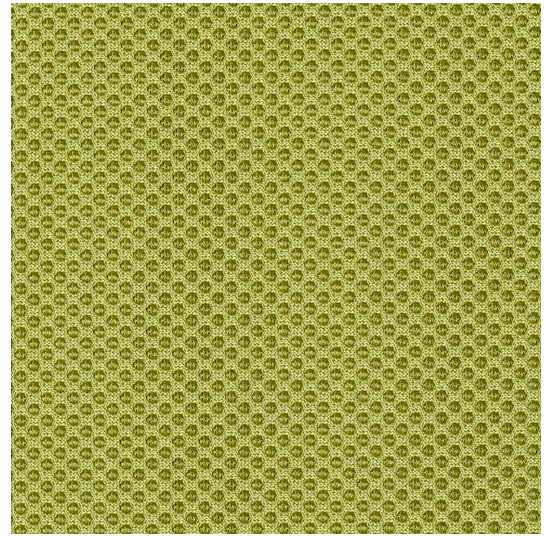
* 60999

RM1



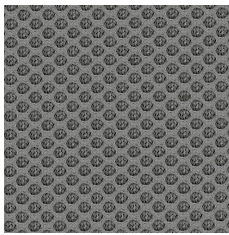
* 60025

RM2



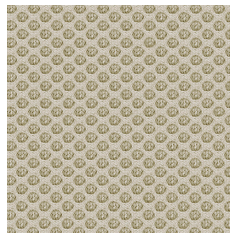
* 68056

RM5



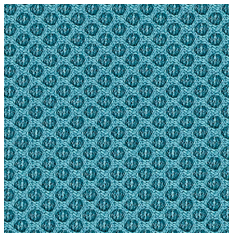
* 60011

RM3



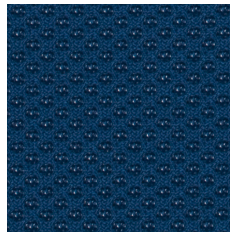
* 61128

RM4



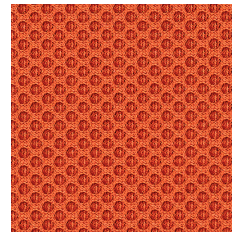
* 66063

RM6



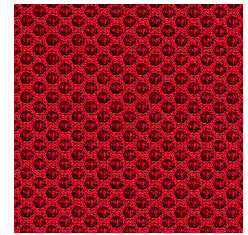
* 66123

RM7



* 63034

RM9



* 64119

RM8

Runner mesh



EN

Made from 20% recycled materials

Composition

100% Polyester

Weight

510 g/m²

Abrasion resistance

70.000 Martindale cycles

Flammability

BS EN 1021-1 (cigarette)

BS EN 1021-2 (match)

UNI 9175 Class 2 | EMME

CAL TB 117

Light fastness

5-7 (EN ISO 105-B02)

Fastness to rubbing

wet: 4-5; dry: 4-5 (EN ISO 105-X12)

FR

Fabriqué à partir de matériaux 20 % recyclés

Composition

100% Polyester

Poids

510 g/m²

Résistance à l'abrasion

70.000 Cycles de Martindale

Inflammabilité

BS EN 1021-1 (cigarette)

BS EN 1021-2 (allumette)

UNI 9175 Classe 2 | EMME

CAL TB 117

Stabilité à la lumière

5-7 (EN ISO 105-B02)

Résistance au frottement

humide 4-5; sec: 4-5 (EN ISO 105-X12)

DE

Aus 20% recycelten Materialien hergestellt

Zusammensetzung

100% Polyester

Gewicht

510 g/m²

Abriebfestigkeit

70.000 Martindale-Zyklen

Entflammbarkeit

BS EN 1021-1 (Zigarette)

BS EN 1021-2 (Streichholz)

UNI 9175 Klasse 2 | EMME

CAL TB 117

Lichtgeschwindigkeit

5-7 (EN ISO 105-B02)

Reibechtheit

nass: 4-5; trocken: 4-5 (EN ISO 105-X12)

!

Batch to batch variations in shade may occur within commercial tolerances.

!

Des variations de teinte d'un lot à l'autre peuvent se produire dans le cadre des tolérances commerciales.

!

Innerhalb der handelsüblichen Toleranzen können Farbabweichungen von Charge zu Charge auftreten.