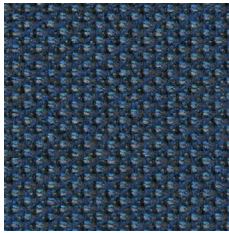
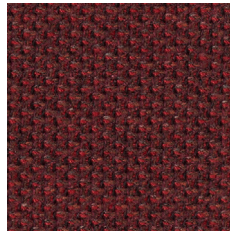


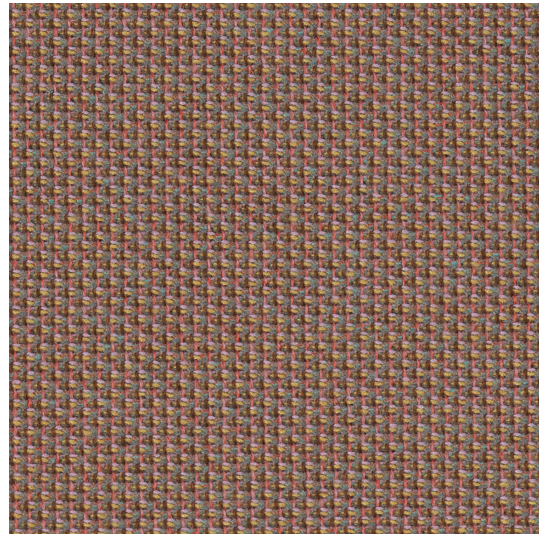
Cat.3



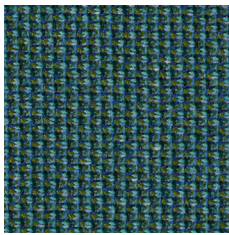
*2501 TA5



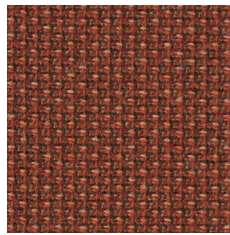
*2801 TB5



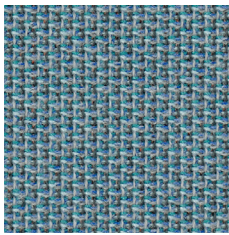
*1201 LN9



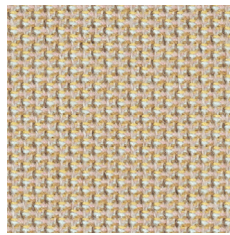
*2601 TA7



*2201 TB4



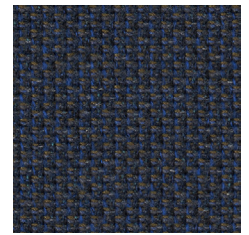
*2401 TA4



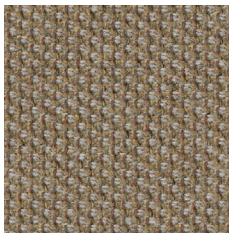
*1102 TB2



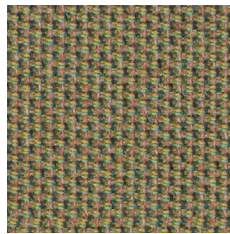
*2301 TB1



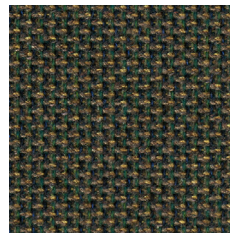
*2502 TA6



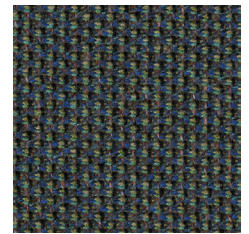
*2001 TB3



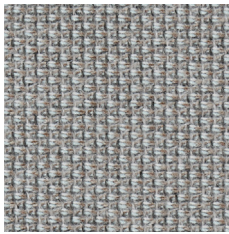
*1701 LS2



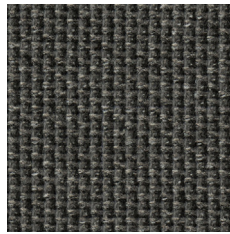
*1302 TA9



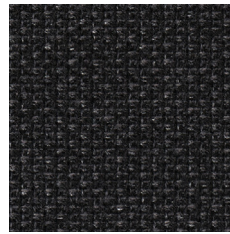
*1803 TA8



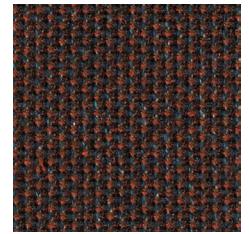
*1901 TA3



*2901 TA2



*3101 TA1



*1501 TB6



EN

Certified to OEKO-TEX® Standard 100

Certified to the EU Ecolabel

Composition

100% post-consumer recycled polyester

Weight

407 g/m²

Abrasion resistance

120.000 Martindale cycles

Flammability

BS EN 1021-1 (cigarette)

BS EN 1021-2 (match)

CAL TB 117

Light fastness

7-8 (EN ISO 105-B02)

Fastness to rubbing

wet: 4-5; dry: 4-5 (ISO 105-X12)

FR

Certifié conforme à la norme
OEKO-TEX® 100

Certifié conforme à l'écolabel européen

Composition

Polyester recyclé 100 % après utilisation

Poids

407 g/m²

Résistance à l'abrasion

120.000 Cycles de Martindale

Inflammabilité

BS EN 1021-1 (cigarette)

BS EN 1021- 2 (allumette)

CAL TB 117

Stabilité à la lumière

7-8 (EN ISO 105-B02)

Résistance au frottement

humide: 4-5; sec: 4-5 (ISO 105-X12)

DE

Zertifiziert gemäß OEKO-TEX®
Standard 100

Zertifiziert nach EU Ecolabel

Zusammensetzung

Nach der Nutzung 100 % recyceltes

Polyester

Gewicht

407 g/m²

Abriebfestigkeit

120.000 Martindale-Zyklen

Entflammbarkeit

BS EN 1021-1 (Zigarette)

BS EN 1021-2 (Streichholz)

CAL TB 117

Lichtgeschwindigkeit

7-8 (EN ISO 105-B02)

Reibechtheit

nass: 4-5; trocken: 4-5 (ISO 105-X12)

!

Batch to batch variations in shade may occur within commercial tolerances.

!

Des variations de teinte d'un lot à l'autre peuvent se produire dans le cadre des tolérances commerciales.

!

Innerhalb der handelsüblichen Toleranzen können Farbabweichungen von Charge zu Charge auftreten.