

# MOVE&LEAD executive cabinets

Design by Gediminas Juška | Lithuania



## FEATURES

- Left or right option for wardrobes and cabinets
- Free standing wardrobes and cabinets
- Adjustable shelf height in wardrobes and cabinets
- Made from high quality wood veneer with HPL Fenix

## TECHNICAL INFORMATION

### WARDROBES AND CABINETS



#### Carcass

- 18 mm chipboard covered in wood veneer;
- Milled side panel for convenient door opening;
- Natural wood / 0,5 mm veneer lacquered edging.

#### Shelves

- 18 mm MFC (melamine) with 1mm ABS edging, coloured in black by default;
- Shelf load capacity: 15 kg.

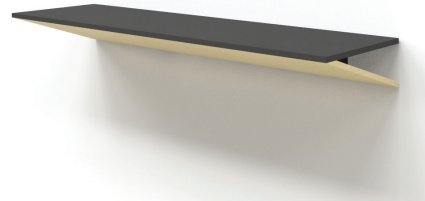
#### Doors

- 18 mm plywood covered in HPL with lacquered plywood edging;
- 155° opening angle with soft closing system.

#### Base

- Black plastic height levelling feet, H=17 mm (+10 mm).

### SHELVES AND SHELVING UNITS



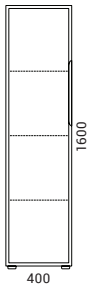
#### Carcass

- 12 mm chipboard covered in HPL Fenix with 1 mm ABS edging;
- 12 mm plywood covered in wood veneer;
- 18 mm MFC (melamine) with 1 mm ABS edging, coloured in black by default;
- 25 mm MDF;
- Load capacity: 10 kg per unit.

## RANGE

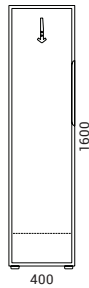
Cabinet with 3 adjustable shelves

L/H, R/H



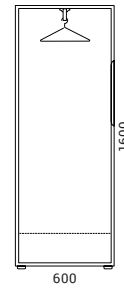
Wardrobe with hook

L/H, R/H



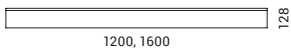
Wardrobe with pull out rail

L/H, R/H

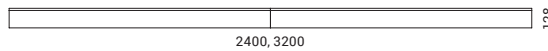


**ATTENTION! Combinations with connected 3 or more cabinets in a row are not possible! Handle is accessible from side only.**

Shelves



Shelving units



**ATTENTION! Fixing process needs space in both sides. It is impossible to hang shelves next to a wall or in a wall recess. All other furniture next to shelves must be installed after fixing shelves.**