

1) Sensing surface, 2) Housing, 3) Cover, 4) Potentiometer, 5) LED function indicator



Basic features

| | |
|---------------------|--|
| Approval/Conformity | CE UKCA cULus WEEE |
| Basic standard | IEC 60947-5-2 |
| Scope of delivery | Nut (2x) Screwdriver Short guide |
| Sensitivity | Switching distance adjustable |
| Series | M12 |

Electrical data

| | |
|-------------------------------------|-------------|
| No-load current I_o max. at U_e | 12 mA |
| Operating voltage U_b | 12...35 VDC |
| Rated insulation voltage U_i | 75 V DC |
| Rated operating current I_e | 200 mA |
| Rated operating voltage U_e DC | 24 V |
| Ripple max. (% of U_e) | 10 % |
| Switching frequency | 100 Hz |
| Utilization category | DC -13 |
| Voltage drop static max. | 1.5 V |

Display/Operation

| | |
|--------------------|-----|
| Function indicator | yes |
|--------------------|-----|

Environmental conditions

| | |
|---------------------|-------------|
| Ambient temperature | -30...70 °C |
| Contamination scale | 1 |
| IP rating | IP65 |

Electrical connection

| | |
|-----------------------------------|----------------------------|
| Connection | M12x1-Male, 4-pin, A-coded |
| Number of pins | 4 |
| Polarity reversal protected | yes |
| Protection against device mix-ups | yes |
| Short-circuit protection | yes |

Functional safety

| | |
|--------------|-------|
| MTTF (40 °C) | 584 a |
|--------------|-------|

Interface

| | |
|------------------|------------------------|
| Switching output | PNP normally open (NO) |
|------------------|------------------------|

Material

| | |
|--------------------------|------------------------|
| Cover material | PA |
| Housing material | 1.4301 stainless steel |
| Material sensing surface | PTFE |

Mechanical data

| | |
|-------------------|--------------------|
| Dimension | Ø 12 x 60 mm |
| Installation | for flush mounting |
| Size | M12x1 |
| Thread (A) | M12x1 |
| Tightening torque | 8 Nm |

Range/Distance

| | |
|----------------------------------|----------|
| Hysteresis H max. (% of Sr) | 15.0 % |
| Measuring range | 1...4 mm |
| Rated operating distance Sn | 4 mm |
| Repeat accuracy max. (% of Sr) | 2.0 % |
| Temperature drift max. (% of Sr) | 20 % |

Remarks

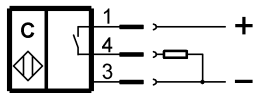
The potentiometer does not have a fixed stop, but can be turned endlessly without destroying anything.
 If no change in the switching signal is detected, the potentiometer should be turned forwards or backwards until a signal change occurs at the output.
 For more information about MTTF and B10d see MTTF / B10d Certificate

Indication of the MTTF- / B10d value does not represent a binding composition and/or life expectancy assurance; these are simply experiential values with no warranty implications. These declared values also do not extend the expiration period for defect claims or affect it in any way.

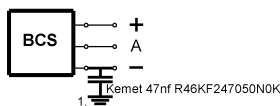
Connector Drawings



Wiring Diagrams



Installation remarks



1) Machine GND