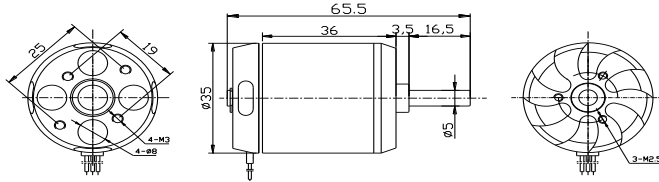
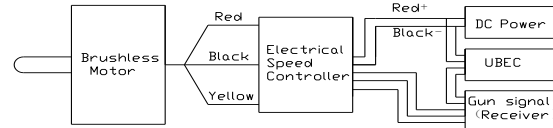


D3548 Out Runner Brushless Motor Instruction

Dimension



connection



Congratulation for your purchase of high performance brushless outrunner motor series.

Our motors are designed to use perfectly with our own electronic speed controllers. But it is also possible to use them with most of other common electronic speed controllers. The motors are designed for running clockwise or counterclockwise. To change the turning direction you just simply exchange the red and yellow connection wire. If you want to use other speed controllers, please refer to your controller instruction manual.

D3548 SERIES OUTRUNNER BRUSHLESS MOTOR 2826) SERIES OUTRUNNER BRUSHLESS MOTOR

Model	Volts	KV(rpm/v)	Max Pull	Weight	Motor size	Shaft size	MaxPower	ESC	Batter/prop
D3548-4	11.1~18.5V	1100	2150g	156g	Φ35*48mm	Φ5.0x65.5mm	911watt	70A	LiPox3/12x6 LiPox5/12x6.5
D3548-5		900	1780g				770watt		LiPox3/11x8 LiPox5/ /13x6
D3548-6		790	1650g				717watt		LiPox3/ 12x7 LiPox5/ 13x7

Product description

1. Mount your motor with the includes screws tightly on your front cover of model.
2. Our motors provide high efficiency stator design.
3. Small size, lightweight and long life.

ATTENTION:

1. Please make sure your motor has enough cooling while running. Consider to put a whole into your model motor cover to improve the ventilation.
2. Our motors providing best performance with the recommended propeller size. If you consider to change the propeller size be aware that motor can overheat and damaged.
3. Keep motors away from moisture, dust, scrap and small items to avoid damages.
We wish you many happy landings with our long life quality equipment.