

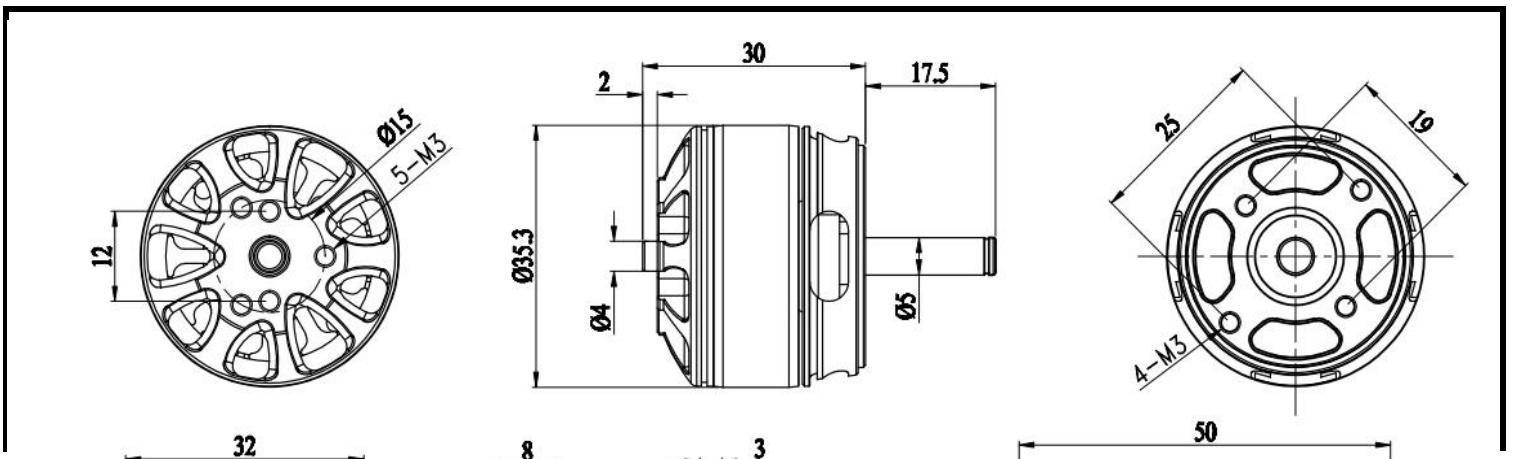
D3530EVO Motor 基本参数

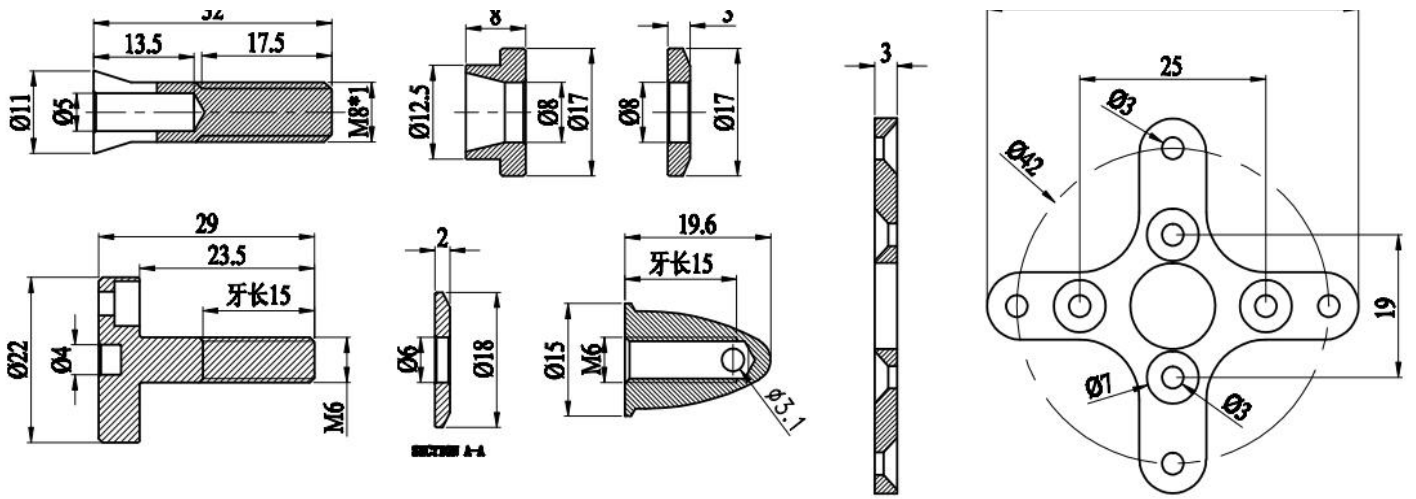
测试KV	KV1100	重量 (含线)	75.1g
电机尺寸	φ35.3 x30mm	相间内阻	97.5mΩ
引线规格	85mm 焊3.5接头	槽极	12N14P
轴径	5mm	工作额定电压 (Lipo)	3-4S
空载电流	1.16A /10V	最大电流 (60S)	23.27A
最大功率	380W	最大拉力	1080g(4S/APC8x6)

测试KV	KV1400	重量 (含线)	77.1g
电机尺寸	φ35.3 x30mm	相间内阻	54.4mΩ
引线规格	85mm 焊3.5接头	槽极	12N14P
轴径	5mm	工作额定电压 (Lipo)	3-4S
空载电流	1.77A /10V	最大电流 (60S)	42.97A
最大功率	663W	最大拉力	1662g(4S/APC8x6)

测试KV	KV1700	重量 (含线)	78.1g
电机尺寸	φ35.3 x30mm	相间内阻	34.3mΩ
引线规格	85mm 焊3.5接头	槽极	12N14P
轴径	5mm	工作额定电压 (Lipo)	2-4S
空载电流	2.48A /10V	最大电流 (60S)	44.92A
最大功率	702.5W	最大拉力	1577g(4S/APC7x4)

MOTOR OUTLINES:





MOTOR TECHNICAL DATA:

Item NO.	Volts(V)	Prop	Throttle(%)	CURRENT (A)	Power(W)	Thrust (g)	PRM	Efficiency (g/W)	Operating temperature(°C)
D3530-1100KV(EVO)	12.45	7x5	40%	3.10	38.6	221	6162	5.7	37.2°C
	12.43		50%	4.21	52.3	284	6874	5.4	
	12.41		60%	5.30	65.8	311	7441	4.7	
	12.38		70%	6.63	82.1	373	8097	4.5	
	12.34		80%	8.83	109.0	436	8941	4.0	
	12.28		90%	11.62	142.7	519	9862	3.6	
	12.26		100%	13.00	159.4	565	10156	3.5	
	12.82	APC8x6	40%	3.33	42.7	264	6299	6.2	38.3°C
	12.75		50%	4.53	57.8	331	7043	5.7	
	12.60		60%	5.80	73.1	393	7639	5.4	
	12.45		70%	7.36	91.6	446	8323	4.9	
	12.43		80%	9.93	123.4	555	9178	4.5	
	12.40		90%	13.29	164.8	670	10060	4.1	
	12.33		100%	14.75	181.9	715	10347	3.9	
	16.86	7x5	40%	4.65	78.4	352	7799	4.5	39.1°C
	16.75		50%	6.45	108.0	433	8691	4.0	
	16.70		60%	8.35	139.4	513	9496	3.7	
	16.50		70%	10.82	178.5	627	10363	3.5	
	16.45		80%	14.86	244.4	753	11467	3.1	
	16.32		90%	19.51	318.4	929	12467	2.9	
	16.22		100%	21.52	349.1	958	12764	2.7	
	16.77	APC8x6	40%	4.71	79.0	390	7660	4.9	39.6°C
	16.70		50%	6.56	109.6	477	8590	4.4	
	16.65		60%	8.69	144.7	582	9370	4.0	
	16.50		70%	11.44	188.8	695	10227	3.7	
	16.48		80%	15.92	262.4	877	11264	3.3	
	16.43		90%	21.12	347.0	1021	12125	2.9	
	16.36		100%	23.27	380.7	1080	12349	2.8	

D3530-1400KV(EVO)	12.39	7x5	40%	5.52	68.4	296	7357	4.3	38.5°C
	12.35		50%	7.56	93.4	352	8238	3.8	
	12.31		60%	9.78	120.4	412	8985	3.4	
	12.27		70%	12.31	151.0	504	9766	3.3	
	12.18		80%	16.96	206.6	662	10790	3.2	
	12.07		90%	22.19	267.8	784	11772	2.9	
	12.01		100%	24.38	292.8	826	12111	2.8	
	12.86		APC8x6	40%	6.41	82.4	442	6553	
	12.80	50%		9.09	116.4	607	7405	5.2	
	12.79	60%		12.93	165.4	756	8315	4.6	
	12.69	70%		17.57	223.0	919	9142	4.1	
	12.56	80%		23.26	292.1	1046	10014	3.6	
	12.38	90%		30.30	375.1	1284	10721	3.4	
	12.28	100%		32.63	400.7	1351	10891	3.4	
	12.38	APC9x6	40%	6.01	74.4	356	6418	4.8	39.8°C
	12.34		50%	8.49	104.8	538	7272	5.1	
	12.27		60%	11.96	146.7	693	8133	4.7	
	12.19		70%	16.14	196.7	861	8949	4.4	
	12.08		80%	21.74	262.6	1066	9773	4.1	
	11.93		90%	28.34	338.1	1195	10569	3.5	
	11.86		100%	30.83	365.6	1283	10790	3.5	
16.28	APC8x6	40%	8.58	139.7	654	7679	4.7	40.7°C	
16.19		50%	12.66	205.0	836	8724	4.1		
16.07		60%	18.34	294.7	1009	9730	3.4		
15.84		70%	24.11	381.9	1241	10598	3.2		
15.65		80%	31.61	494.7	1469	11341	3.0		
15.47		90%	40.16	621.3	1650	12010	2.7		
15.43		100%	42.97	663.0	1662	12070	2.5		
12.65	7x5	40%	9.17	116.0	430	8664	3.7	39.6°C	
12.60		50%	12.77	160.9	522	9630	3.2		
12.52		60%	16.68	208.8	614	10457	2.9		
12.40		70%	21.83	270.7	762	11455	2.8		
12.23		80%	28.73	351.4	912	12538	2.6		
11.95		90%	37.08	443.1	1100	13430	2.5		
11.92		100%	40.81	486.5	1167	13725	2.4		
12.68	APC8x6	40%	9.29	117.8	502	8524	4.3	40.3°C	
12.61		50%	13.07	164.8	620	9477	3.8		
12.53		60%	17.41	218.1	737	10299	3.4		
12.42		70%	23.26	288.9	894	11222	3.1		
12.27		80%	31.38	385.0	1056	12150	2.7		
12.07		90%	41.31	498.6	1207	12963	2.4		
11.99		100%	44.51	533.7	1229	13224	2.3		
16.57	APC7x4	40%	10.37	171.8	545	11871	3.2	40.3°C	
16.49		50%	13.85	228.4	716	13091	3.1		
16.37		60%	17.67	289.3	869	14130	3.0		
16.14		70%	22.83	368.5	1046	15259	2.8		
15.92		80%	30.40	484.0	1255	16705	2.6		
15.65		90%	39.43	617.1	1474	17890	2.4		
15.64		100%	44.92	702.5	1577	18461	2.2		

Notes: The test condition of temperature is motor surface temperature in 100% throttle while the motor run 15 s.environment temperature 26°C