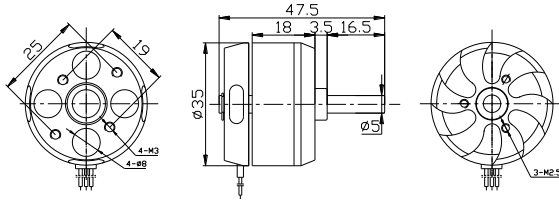
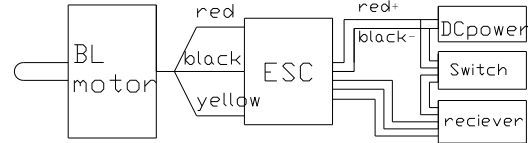


D3530 Out Runner Brushless Motor Instruction

Dimension



connection



Congratulation for your purchase of high performance brushless outrunner motor series.

Our motors are designed to use perfectly with our own electronic speed controllers. But it is also possible to use them with most of other common electronic speed controllers. The motors are designed for running clockwise or counterclockwise. To change the turning direction you just simply exchange the red and yellow connection wire. If you want to use other speed controllers, please refer to your controller instruction manual.

D3530(2808) SERIES OUTRUNNER BRUSHLESS MOTOR

Model	Voltage	KV (rpm/v)	Max Pull	Weight	Motor size	Shaft	Max Powe	ESC	Battery/Prop
D3530-8	7.4~15V	1700	1240g	74g	Φ35*30mm	Φ5.0*47.5mm	480watt	50A	LiPox2 / 9x4.7 LiPox4/ 7x3
D3530-10		1400	1180g				446watt		LiPox2 / 10x6 LiPox4/ 7x3
D3530-14		1100	1100g				313watt		LiPox2/ 12x6 LiPox4/ 8x4

Product description

1. Mount your motor with the includes screws tightly on your front cover of model.
2. Our motors provide high efficiency stator design.
3. Small size, lightweight and long life.

ATTENTION:

1. Please make sure your motor has enough cooling while running. Consider to put a whole into your model motor cover to improve the ventilation.
2. Our motors providing best performance with the recommended propeller size. If you consider to change the propeller size be aware that motor can overheat and damaged.
3. Keep motors away from moisture, dust, scrap and small items to avoid damages.
We wish you many happy landings with our long life quality equipment.