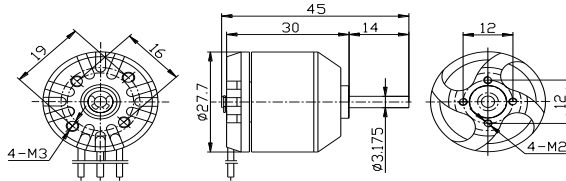
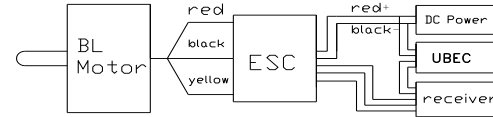


D2830 Out Runner Brushless Motor Instruction

Dimension



connection



Congratulation for your purchase of high performance brushless outrunner motor series.

Our motors are designed to use perfectly with our own electronic speed controllers. But it is also possible to use them with most of other common electronic speed controllers. The motors are designed for running clockwise or counterclockwise. To change the turning direction you just simply exchange the red and yellow connection wire. If you want to use other speed controllers, please refer to your controller instruction manual.

D2830 (2212) SERIES OUTRUNNER BRUSHLESS MOTOR

Model	Volts	KV (rpm/v)	Max Pull	Weight	Motor size	Shaft size	Max power	ESC	Batter/Prop
D2830-8	7.4-15V	1300	930g	52g	Φ 28*30mm	Φ 3.175*45mm	275watt	30A	LiPox2/9x6
D2830-11		1000	890g				210watt		LiPox2/10x7
D2830-12		850	875g				187watt		LiPox2/11x7
D2830-14		750	866g				185watt		LiPox2/12x6

Product description

1. Mount your motor with the includes screws tightly on your front cover of model.
2. Our motors provide high efficiency stator design.
3. Small size, lightweight and long life.

ATTENTION:

1. Please make sure your motor has enough cooling while running. Consider to put a whole into your model motor cover to improve the ventilation.
2. Our motors providing best performance with the recommended propeller size. If you consider to change the propeller size be aware that motor can overheat and damaged.
3. Keep motors away from moisture, dust, scrap and small items to avoid damages.
We wish you many happy landings with our long life quality equipment.