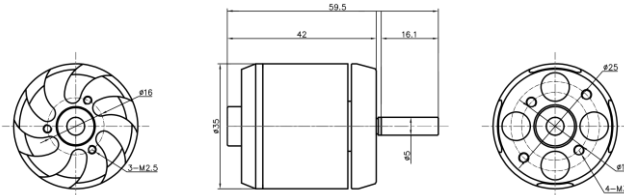
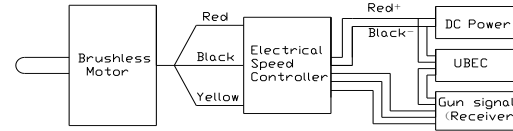


D3542 Out Runner Brushless Motor Instruction

Dimension



connection



Congratulation for your purchase of high performance brushless outrunner motor series.

Our motors are designed to use perfectly with our own electronic speed controllers. But it is also possible to use them with most of other common electronic speed controllers. The motors are designed for running clockwise or counterclockwise. To change the turning direction you just simply exchange the red and yellow connection wire. If you want to use other speed controllers, please refer to your controller instruction manual.

D3542(2820) SERIES OUTRUNNER BRUSHLESS MOTOR

Model	Volts	KV(rpm/v)	Max Pull	Weight	Motor size	Shaft size	Max Power	ESC	Battery/Prop
D3542-4	7.4-15V	1450	1420g	130g	Φ35*42mm	Φ5.0x59.5mm	690watt	70A	LiPox2/12x5 LiPox4/11x7
D3542-5		1250	1350g				664watt		LiPox2/ 8x7 LiPox4/ 9x5
D3542-6		1000	1260g				543watt		LiPox2/10x6 LiPox4/11x5

Product description

1. Mount your motor with the includes screws tightly on your front cover of model.
2. Our motors provide high efficiency stator design.
3. Small size, lightweight and long life.

ATTENTION:

1. Please make sure your motor has enough cooling while running. Consider to put a whole into your model motor cover to improve the ventilation.
2. Our motors providing best performance with the recommended propeller size. If you consider to change the propeller size be aware that motor can overheat and damaged.
3. Keep motors away from moisture, dust, scrap and small items to avoid damages.
We wish you many happy landings with our long life quality equipment.