

PREPARATION FOR USE

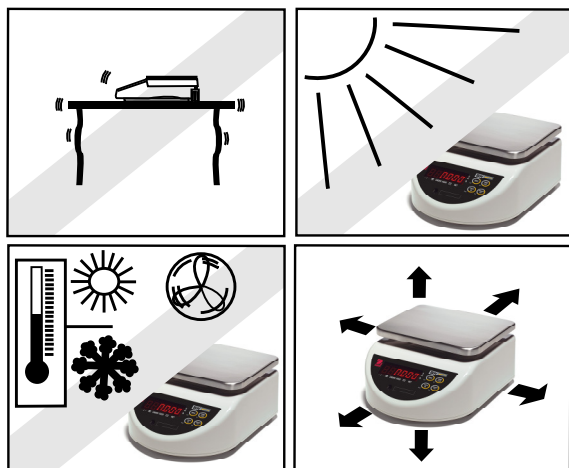
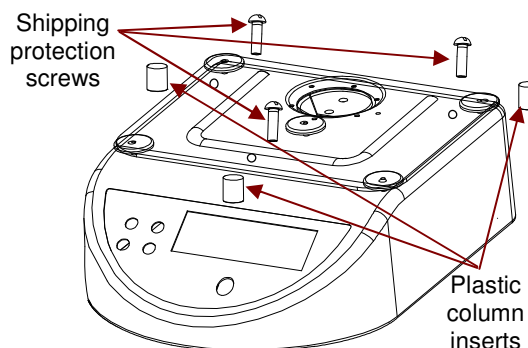
Remove shipping protection screws on the platform support, and plastic column inserts under it. Re-install them if shipping the scale.

To minimize condensation inside the scale, slightly loosen rear leveling feet; then level the scale for normal operation. (Tighten all feet when cleaning scale.)

To use AC power, remove rubber seal on bottom to insert adapter plug in jack.

Battery charges when AC adapter is connected. Scale switches to battery power if AC power stops. Normal battery operating time is 50 hours on a 15-hour charge.

Note: To prevent water ingress during use, insert rubber Seal into the input jack recess.

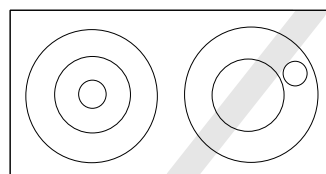


SELECTING THE LOCATION

Place on a firm, steady surface.

Avoid locations with excessive air current, vibrations, heat sources, or rapid temperature changes.

Level the scale: Adjust leveling feet so bubble is centered.



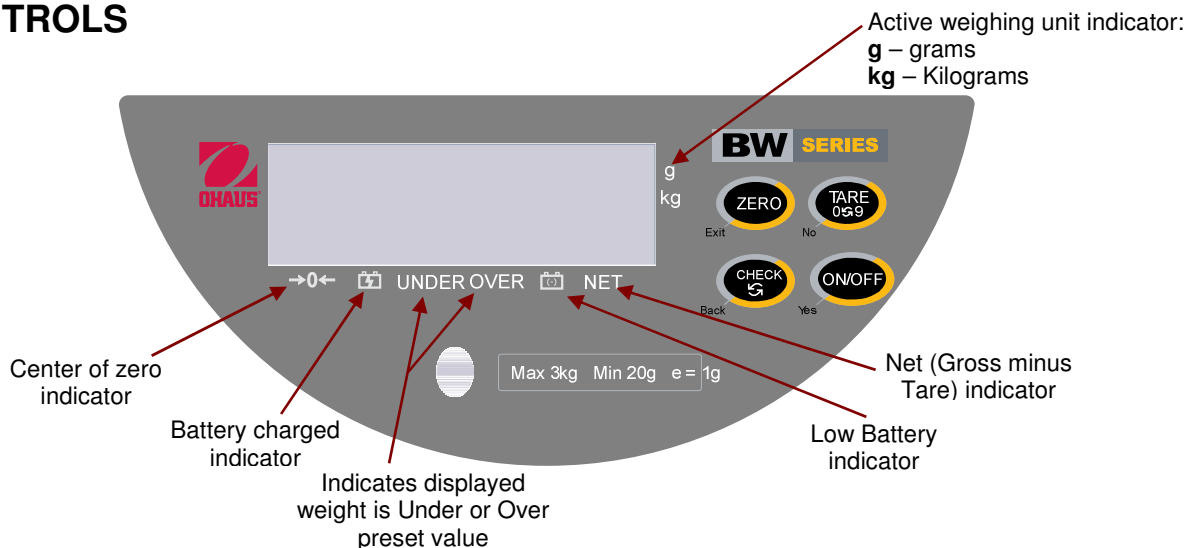
SAFETY PRECAUTIONS







For safe and dependable operation, observe the following safety precautions:

- Verify that indicated input voltage on Adapter and plug matches local power supply.
- Make sure that the power cord does not pose an obstacle or tripping hazard.
- Disconnect the product from the power supply when cleaning.
- Do not operate this product in hazardous or unstable environments.
- Do not drop loads on the pan.
- Use only approved accessories and peripherals, as available.
- Operate the product only under ambient conditions specified in the Instruction Manual.
- Service should be performed by authorized personnel only.

CONTROLS



	<ul style="list-style-type: none"> • Turns the scale on • Long-press turns the scale off • In SETUP Mode, “Yes” accepts/confirms the displayed setting • In CHECK Mode, accepts/confirms the displayed value
	<ul style="list-style-type: none"> • Inputs the weight of the object on the weighing pan as a Tare value • In SETUP Mode, “No” toggles through the available settings • In CHECK Mode, increments the value of the selected digit
	<ul style="list-style-type: none"> • Zeros the display • With the scale off, long-press together with ON/OFF enters User Setup Mode • In SETUP Mode, “Exit” ends setup and exits to “Save” • In CHECK Mode, ends Over/Under setup and exits to weighing mode
	<ul style="list-style-type: none"> • Initiates CHECK Over/Under setup • In SETUP Mode, “Back” reverts to the previous parameter • In CHECK Mode, shifts to the next digit

OPERATION

Turning Scale On/Off

Press **ON**. After a display test, scale enters active weighing mode.
Allow 15-30 minutes for warmup.

To turn the scale off, long-press **Off**.



Zero Operation

Press **ZERO** to zero the stable weight display.
(Weight must be within $\pm 2\%$ of scale capacity). Center of Zero indicator lights up.



Manual Tare

Place a container on the weighing pan and press **TARE**.
Display shows net value of "0".

To clear Tare value, press **TARE** with pan empty.

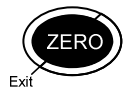


Checkweigh Target Setting

Compares the weight of an item against a pre-set Over-Under range.

To activate Checkweighing Mode, see Menu – *next page*.

- Press **CHECK** to enter Over-Under parameters.
- Value of "OVER" target appears first, with active digit flashing. (**OVER** LED is lit.)
Press **No** to increment the active digit or **CHECK** to shift to the next digit.
- Press **Yes** to accept the displayed value and proceed to "UNDER" target.
Now the **UNDER** LED is lit.
- Press **No** to increment the active digit or **CHECK** to shift to the next digit.
- Press **Exit** to accept displayed value and exit into checkweighing mode.



Notes:

- **OVER** or **UNDER** LEDs light if weight on pan is over or under the pre-set limits.
- **OVER** and **UNDER** LEDs light simultaneously if weight is *within* pre-set limits.
- The LED indication is complemented by a beep.
- Over-Under values are retained when the unit is turned off.
- Over-Under values are not retained when the weighing unit or resolution setup are changed.

Accessing the User Setup Mode

With the scale off, press **ON/OFF** and **ZERO** simultaneously.

When the scale turns on, release **ON/OFF** but keep pressing **ZERO** until **SETUP** appears

To navigate in the User Setup Mode, press:



to accept the displayed setting



to end setup and proceed to "Save"



to toggle through available settings



to revert to the previous parameter

User Setup Parameters

Parameters	Description	Settings
S1	Scale automatically turns off after 15 minutes of inactivity.	ON - enables this function. OFF -disables this function.
S2	Scale enters sleep mode after two minutes of inactivity.	ON - enables this function. OFF -disables this function.
S3	CHECK activation and Alert Range	0 - Check mode is off. Scale beeps when displayed weight is: 1—...within the preset Over and Under values 2—...outside the preset Over and Under range 3—...within the preset Over and Under values (Over-Under LED's do not light within preset range) 4—...outside the pre-set Over and Under range (Over-Under LEDs do not light within preset range) 5— Alarm is off (Over-Under LED's do not light within preset range) 6— Alarm is off
S4	Averaging Level	0, 1, 2 , 3 (most filtering, longer stabilization time) 4, 5, 6, 7 (corresponds to 0, 1, 2, 3 but with slower display update)
S5	Weighing Unit	Lb , oz, g
S6	LED Brightness Level	0 ,1,2,3 (dimpest).
DSP	Display Type	OFF – displays weight continuously. ON – displays first stable weight.
S8	Resolution	OFF – 3000 scale divisions ON – 6000/7500 scale divisions
Save	Save or Abort	Save – saves changes and reverts to weighing mode. Abort – reverts to weighing mode without saving changes.

Note: Bold settings are defaults.



P/N 80253134