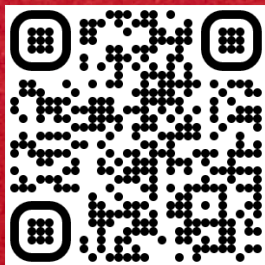


Liberty Scales

Industrial Products Catalog



(661) 888-1919
sales@libertyscales.com
LIBERTYSCALES.COM



06

Floor Scales

32

Agricultural Scales

40

Pallet Jack Scales

46

Axle Scales & Weighing Pads

52

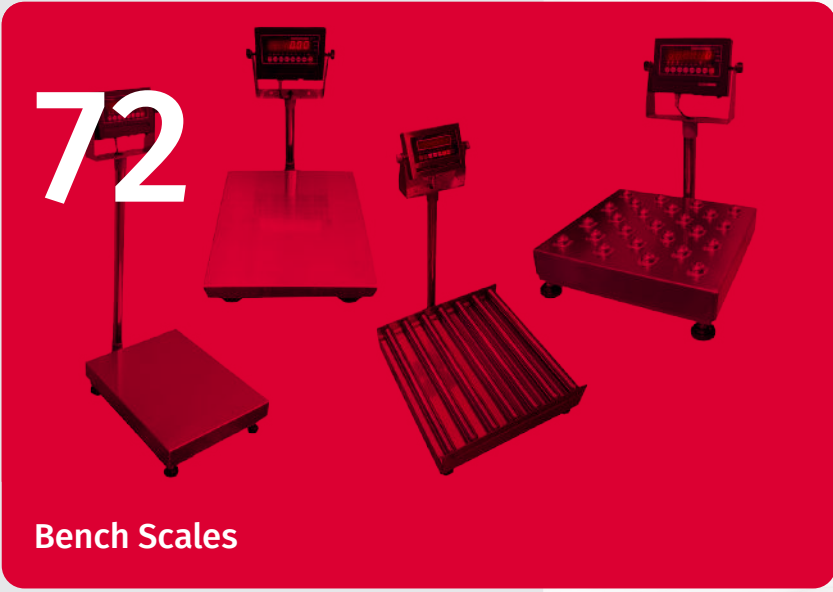
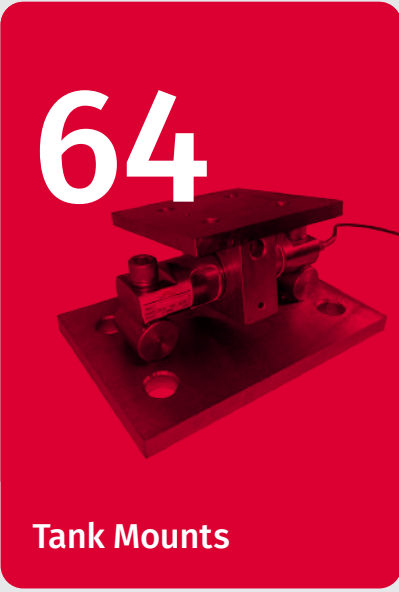
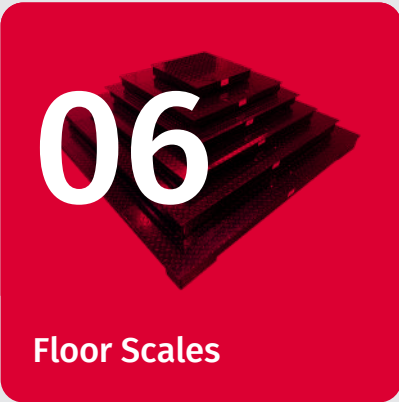
Crane Scales

64

Tank Mounts

72

Bench Scales



Liberty Scales

Product Catalog 2023



We come

Scales play a vital role in the success of businesses, providing precise measurements for smooth operations. Liberty Scales stands out as a leading provider of laboratory and industrial scale solutions. With a wealth of experience in the industry, Liberty Scales is renowned for its dependable products, competitive prices, and exceptional customer service.

We invite you to explore our product lineup this year and give us the opportunity to earn your trust and business!

Best regards,

Dara Nazery

President

Liberty Scales

With our NTEP certified scales, Liberty Scales is dedicated to providing trustworthy weighing solutions for businesses of all kinds.





About Us

Welcome to Liberty Scales - Where We Provide Precision Weighing Solutions

At Liberty Scales, we open the door to a world of innovation where cutting-edge laboratory and industrial weighing solutions converge with unmatched expertise.

Step beyond boundaries and explore the extensive range of industrial scales offered by Liberty Scales. From versatile Floor Scales to reliable Drum Scales, from efficient Agricultural Scales to sturdy Tank Mounts and Load Cells, we have the right solution for every industry. These state-of-the-art offerings are meticulously designed to meet the diverse needs of various sectors and foster progress within your specific field.

When precision is paramount, Liberty Scales stands unwaveringly by your side. Our laboratory scales revolutionize accuracy and reliability, fueling discoveries and advancements across many scientific disciplines. With Liberty Scales as your trusted ally, you gain the transformative tools to revolutionize your research and analysis, taking your endeavors to unprecedented heights.

Are you ready to embrace the revolution of precision weighing? Embark on a journey of exploration and innovation as you dive into our comprehensive range of laboratory and industrial scales. Uncover the cutting-edge technologies reshaping entire industries, and experience firsthand the transformative difference that Liberty Scales can make in your relentless pursuit of excellence.



Floor Scales



All of our floor scales are available with a wide variety of customizations; including printers, scoreboard, data collection software, pit-frames, ramps, indicators, wireless controllers, and explosion proofing.

USA MADE FLOOR SCALES

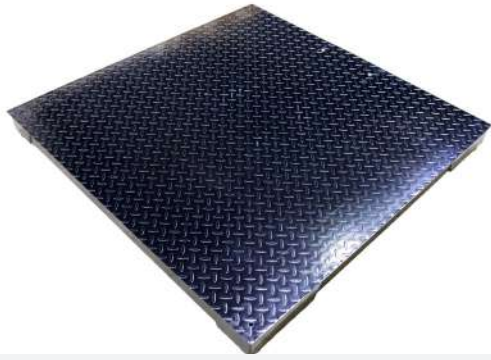


NTEP certified (legal for trade)

Scale Base

- Highest quality platform scale for industrial use
- Welded steel with a tread plate construction
- 200% overload protection
- 20' long heavy duty metal shielded cable for indicator
- Includes indicator with lb/kg selectable, rechargeable battery option
- NTEP 6 digits, 1" display indicator
- Built-in RS-232 communication port
- Factory Calibrated
- Overload Protection
- 5-year warranty

LS-900



Multi-purpose Industrial Floor Scales

Features

- Medium-duty industrial design
- Height: 4"
- SL-7515-C indicator w/ Rs-232 serial output 4 alloy
- Capacity: 10,000 lbs x 1 lb
- 5-year warranty

LS-700



NTEP certified (legal for trade) Floor Scales

Features

- Highest quality platform scale for industrial use
- NTEP 6 digits, 1" display indicator
- Factory Calibrated
- Overload Protection
- 5-year warranty

LS-800-SS-LT



Heavy Duty Pancake Scale

Features

- Twin module steel deck
- Ultra-low 3" profile
- Perfect for cargo dolly weighing
- 20,000 lbs. capacity available
- 5-year warranty

LS-960



Heavy duty Industrial Floor Scale

Features

- Galvanized Scale
- NTEP approved
- SL-7510-SS-C Indicator
- Overload protection
- 5-year warranty

LS-4x4-Galvanized

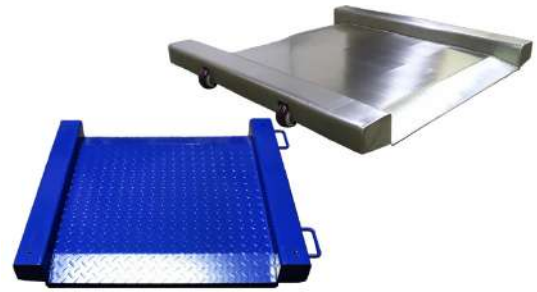


NTEP Washdown Floor Scale

Features

- M Highest quality platform scale for industrial use
- Deck thickness: 3/16"
- NTEP 6 digits, 1" display
- SL-7510-SS-E Indicator

SL-800-SS

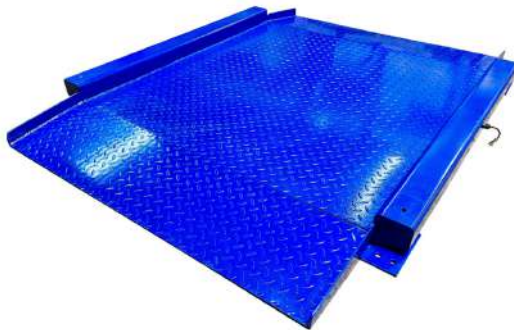


NTEP certified (legal for trade) Drum Scales

Features

- Platform dimensions: 28"(L) x 28"(W) x 1.5"(H)
- Indicator included
- Factory Calibrated
- Overload Protection
- 5-year warranty

LS-917



NTEP Low Profile Drum Scale

Features

- Platform size: 48" x 48" x 1.2"
- Rugged heavy-duty construction
- Live side rails for bulky cargo
- Anti-skid tread plate deck
- 5-year warranty

LS-917-R



Aluminum Wheel Chair Drum Scale

Features

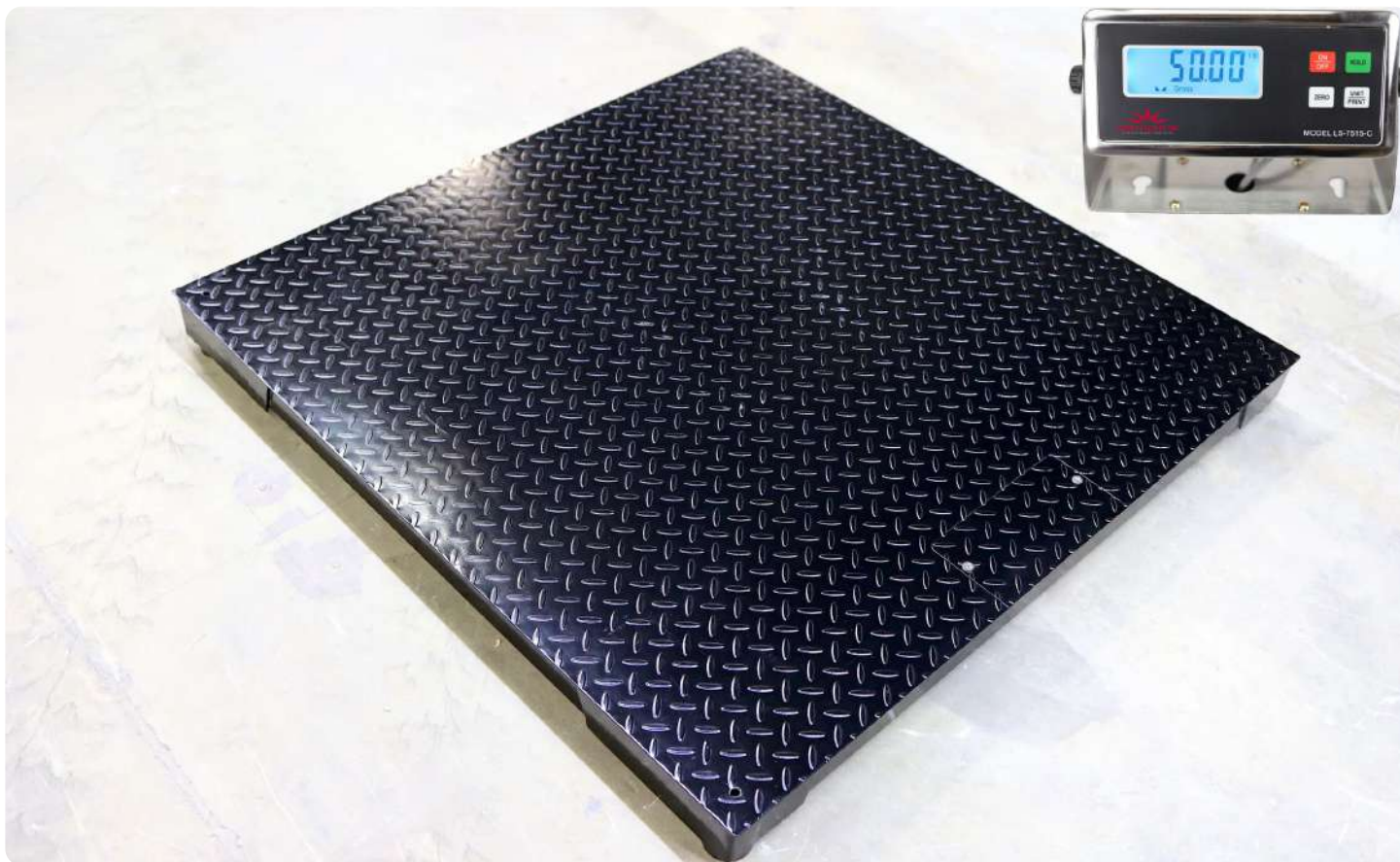
- Made from aluminum to be lightweight (91 lb)
- Easy setup, all you need to do is unfold and plugin
- Four alloy steel load cells
- Complete scale and indicator package

LS-Wheelchair-1k



LS-700-NN

NON-NTEP HEAVY DUTY GENERAL PURPOSE FLOOR SCALE



OPTIONAL ACCESSORIES

- Thermal printers
- Scoreboard (Large Display)
- Pit-frame or portability frames
- Data Collection Software
- Access Ramps
- Indicator stands
- Explosion proof upgrade
- Water-resistant upgrades
- Bumper Guards (Impact protection)
- Output systems (4-20ma or 0-5V Relay)
- Wireless (Cordless connection)

FEATURES

- ✓ Powder coated Scale shell, Anti-corrosion
- ✓ Channel construction for superior strength
- ✓ Painted mild steel junction box
- ✓ Four alloy steel load cells
- ✓ Load cell capacity is 2X the scale capacity for a 200% overload protection
- ✓ Four adjustable alloy steel ball capture support feet
- ✓ 15' PVC shelved cable, (upgrades are available to Stainless steel braided cables)
- ✓ Factory pre-calibrated for quick setup
- ✓ Indicator: LS-7515-C

**LS-700-NN**

NON-NTEP HEAVY DUTY GENERAL PURPOSE FLOOR SCALE

MODELS	CAPACITY in lb	ACCURACY	LOAD CELLS USED	SCALE BASE MATERIAL	NTEP	INDICATOR
LS-700-2X2-1K	1,000	.2 lb	4 (500) lb Capacity load cells	Carbon Steel	No	LS-7515-C
LS-700-2X2-2.5K	2,500	.5 lb	4 (1000 lb) Capacity load cells	Carbon Steel	No	LS-7515-C
LS-700-2X2-5K	5,000	1 lb	4 (2500 lb) Capacity load cells	Carbon Steel	No	LS-7515-C
LS-700-2X3-1K	1,000	.2 lb	4 (500) lb Capacity load cells	Carbon Steel	No	LS-7515-C
LS-700-2X3-2.5K	2,500	.5 lb	4 (1000 lb) Capacity load cells	Carbon Steel	No	LS-7515-C
LS-700-2X3-5K	5,000	1 lb	4 (2500 lb) Capacity load cells	Carbon Steel	No	LS-7515-C
LS-700-3X3-1K	1,000	.2 lb	4 (500) lb Capacity load cells	Carbon Steel	No	LS-7515-C
LS-700-3X3-2.5K	2,500	.5 lb	4 (1000 lb) Capacity load cells	Carbon Steel	No	LS-7515-C
LS-700-3X3-5K	5,000	1 lb	4 (2500 lb) Capacity load cells	Carbon Steel	No	LS-7515-C
LS-700-4X4-1K	1,000	.2 lb	4 (500) lb Capacity load cells	Carbon Steel	No	LS-7515-C
LS-700-4X4-2.5K	2,500	.5 lb	4 (1000 lb) Capacity load cells	Carbon Steel	No	LS-7515-C
LS-700-4X4-5K	5,000	1 lb	4 (2500 lb) Capacity load cells	Carbon Steel	No	LS-7515-C
LS-700-4X4-10K	10,000	2 lb	4 (5000 lb) Capacity load cells	Carbon Steel	No	LS-7515-C
LS-700-4X4-20K	20,000	5 lb	4 (10,000 lb) Capacity load cells	Carbon Steel	No	LS-7515-C
LS-700-4X5-1K	1,000	.2 lb	4 (500) lb Capacity load cells	Carbon Steel	No	LS-7515-C
LS-700-4X5-2.5K	2,500	.5 lb	4 (1000 lb) Capacity load cells	Carbon Steel	No	LS-7515-C
LS-700-4X5-5K	5,000	1 lb	4 (2500 lb) Capacity load cells	Carbon Steel	No	LS-7515-C
LS-700-4X5-10K	10,000	2 lb	4 (5000 lb) Capacity load cells	Carbon Steel	No	LS-7515-C
LS-700-4X6-1K	1,000	.2 lb	4 (500) lb Capacity load cells	Carbon Steel	No	LS-7515-C
LS-700-4X6-2.5K	2,500	.5 lb	4 (1000 lb) Capacity load cells	Carbon Steel	No	LS-7515-C
LS-700-4X6-5K	5,000	1 lb	4 (2500 lb) Capacity load cells	Carbon Steel	No	LS-7515-C
LS-700-4X6-10K	10,000	2 lb	4 (5000 lb) Capacity load cells	Carbon Steel	No	LS-7515-C
LS-700-4X8-1K	1,000	.2 lb	4 (500) lb Capacity load cells	Carbon Steel	No	LS-7515-C
LS-700-4X8-2.5K	2,500	.5 lb	4 (1000 lb) Capacity load cells	Carbon Steel	No	LS-7515-C
LS-700-4X8-5K	5,000	1 lb	4 (2500 lb) Capacity load cells	Carbon Steel	No	LS-7515-C
LS-700-4X8-10K	10,000	2 lb	4 (5000 lb) Capacity load cells	Carbon Steel	No	LS-7515-C
LS-700-4X8-20K	20,000	5 lb	4 (10,000 lb) Capacity load cells	Carbon Steel	No	LS-7515-C
LS-700-5X5-1K	1,000	.2 lb	4 (500) lb Capacity load cells	Carbon Steel	No	LS-7515-C
LS-700-5X5-2.5K	2,500	.5 lb	4 (1000 lb) Capacity load cells	Carbon Steel	No	LS-7515-C
LS-700-5X5-5K	5,000	1 lb	4 (2500 lb) Capacity load cells	Carbon Steel	No	LS-7515-C



LS-700-NN

NON-NTEP HEAVY DUTY GENERAL PURPOSE FLOOR SCALE

MODELS	CAPACITY in lb	ACCURACY	LOAD CELLS USED	SCALE BASE MATERIAL	NTEP	INDICATOR
LS-700-5X5-10K	10,000	2 lb	4 (5000 lb) Capacity load cells	Carbon Steel	No	LS-7515-C
LS-700-5X5-20K	20,000	5 lb	4 (10,000 lb) Capacity load cells	Carbon Steel	No	LS-7515-C
LS-700-5X7-1K	1,000	.2 lb	4 (500) lb Capacity load cells	Carbon Steel	No	LS-7515-C
LS-700-5X7-2.5K	2,500	.5 lb	4 (1000 lb) Capacity load cells	Carbon Steel	No	LS-7515-C
LS-700-5X7-5K	5,000	1 lb	4 (2500 lb) Capacity load cells	Carbon Steel	No	LS-7515-C
LS-700-5X7-10K	10,000	2 lb	4 (5000 lb) Capacity load cells	Carbon Steel	No	LS-7515-C
LS-700-5X7-20K	20,000	5 lb	4 (10,000 lb) Capacity load cells	Carbon Steel	No	LS-7515-C
LS-700-5X8-1K	1,000	.2 lb	4 (500) lb Capacity load cells	Carbon Steel	No	LS-7515-C
LS-700-5X8-2.5K	2,500	.5 lb	4 (1000 lb) Capacity load cells	Carbon Steel	No	LS-7515-C
LS-700-5X8-5K	5,000	1 lb	4 (2500 lb) Capacity load cells	Carbon Steel	No	LS-7515-C
LS-700-5X8-10K	10,000	2 lb	4 (5000 lb) Capacity load cells	Carbon Steel	No	LS-7515-C
LS-700-5X8-20K	20,000	5 lb	4 (10,000 lb) Capacity load cells	Carbon Steel	No	LS-7515-C
LS-700-6X6-1K	1000	.2 lb	4 (500) lb Capacity load cells	Carbon Steel	No	LS-7515-C
LS-700-6X6-2.5K	2500	.5 lb	4 (1000 lb) Capacity load cells	Carbon Steel	No	LS-7515-C
LS-700-6X6-5K	5000	1 lb	4 (2500 lb) Capacity load cells	Carbon Steel	No	LS-7515-C
LS-700-6X6-10K	10,000	2 lb	4 (5000 lb) Capacity load cells	Carbon Steel	No	LS-7515-C
LS-700-6X6-20K	20,000	5 lb	4 (10,000 lb) Capacity load cells	Carbon Steel	No	LS-7515-C
LS-700-7X7-1K	1,000	.2 lb	4 (500) lb Capacity load cells	Carbon Steel	No	LS-7515-C
LS-700-7X7-2.5K	2,500	.5 lb	4 (1000 lb) Capacity load cells	Carbon Steel	No	LS-7515-C
LS-700-7X7-5K	5,000	1 lb	4 (2500 lb) Capacity load cells	Carbon Steel	No	LS-7515-C
LS-700-7X7-10K	10,000	2 lb	4 (5000 lb) Capacity load cells	Carbon Steel	No	LS-7515-C
LS-700-7X7-20K	20,000	5 lb	4 (10,000 lb) Capacity load cells	Carbon Steel	No	LS-7515-C

**LS-800****NTEP HEAVY DUTY FLOOR SCALES****FEATURES**

- ✓ Powder coated Scale shell, Anti-corrosion
- ✓ Channel construction for superior strength
- ✓ Painted mild steel junction box
- ✓ Four NTEP certified alloy steel load cells
- ✓ Load cell capacity is 2X the scale capacity for a 200% overload protection
- ✓ Four adjustable alloy steel ball capture support feet
- ✓ 15' heavy duty stainless steel shielded cable
- ✓ Factory pre-calibrated for quick setup
- ✓ Indicator: LS-7510-E-01
- ✓ NTEP COC #: 22-056

OPTIONAL ACCESSORIES

- Thermal printers
- Scoreboard (Large Display)
- Pit-frame or portability frames
- Data Collection Software
- Access Ramps
- Indicator stands
- Explosion proof upgrade
- Water-resistant upgrades
- Bumper Guards (Impact protection)
- Output systems (4-20ma or 0-5V Relay)
- Wireless (Cordless connection)

MODELS	CAPACITY in lb	ACCURACY	LOAD CELLS USED	SCALE BASE MATERIAL	NTEP	INDICATOR
LS-800-2X2-1K	1,000	.2 lb	4 (500 lb) Capacity load cells (NTEP Certified)	Carbon Steel	Yes	LS-7510-LED or LCD
LS-800-2X2-2.5K	2,500	.5 lb	4 (1000 lb) Capacity load cells (NTEP Certified)	Carbon Steel	Yes	LS-7510-LED or LCD
LS-800-2X2-5K	5,000	1 lb	4 (2500 lb) Capacity load cells (NTEP Certified)	Carbon Steel	Yes	LS-7510-LED or LCD
LS-800-2X3-1K	1,000	.2 lb	4 (500 lb) Capacity load cells (NTEP Certified)	Carbon Steel	Yes	LS-7510-LED or LCD
LS-800-2X3-2.5K	2,500	.5 lb	4 (1000 lb) Capacity load cells (NTEP Certified)	Carbon Steel	Yes	LS-7510-LED or LCD
LS-800-2X3-5K	5,000	1 lb	4 (2500 lb) Capacity load cells (NTEP Certified)	Carbon Steel	Yes	LS-7510-LED or LCD

**LS-800****NTEP HEAVY DUTY FLOOR SCALES**

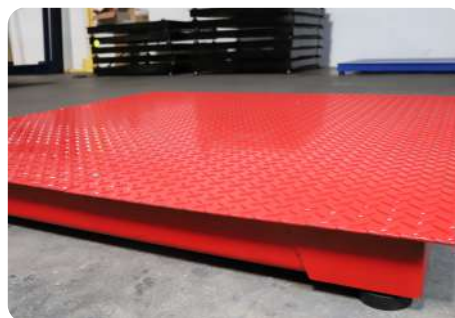
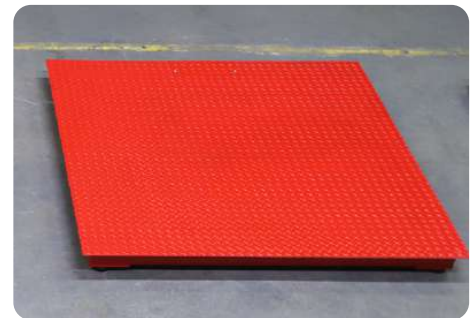
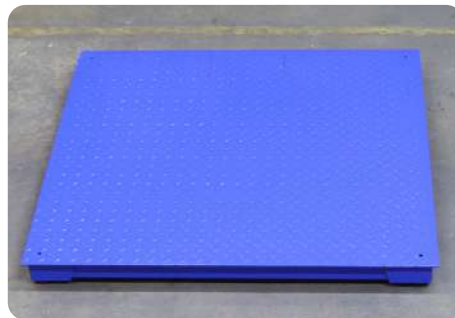
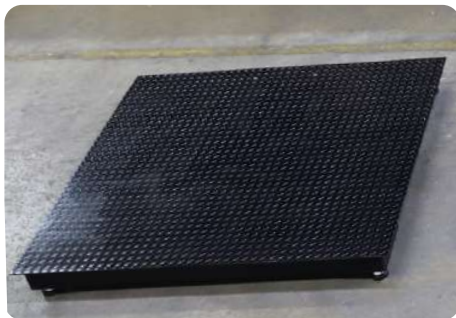
MODELS	CAPACITY in lb	ACCURACY	LOAD CELLS USED	SCALE BASE MATERIAL	NTEP	INDICATOR
LS-800-3X3-1K	1,000	.2 lb	4 (500 lb) Capacity load cells (NTEP Certified)	Carbon Steel	Yes	LS-7510-LED or LCD
LS-800-3X3-2.5K	2,500	.5 lb	4 (1000 lb) Capacity load cells (NTEP Certified)	Carbon Steel	Yes	LS-7510-LED or LCD
LS-800-3X3-5K	5,000	1 lb	4 (2500 lb) Capacity load cells (NTEP Certified)	Carbon Steel	Yes	LS-7510-LED or LCD
LS-800-4X4-1K	1,000	.2 lb	4 (500 lb) Capacity load cells (NTEP Certified)	Carbon Steel	Yes	LS-7510-LED or LCD
LS-800-4X4-2.5K	2,500	.5 lb	4 (1000 lb) Capacity load cells (NTEP Certified)	Carbon Steel	Yes	LS-7510-LED or LCD
LS-800-4X4-5K	5,000	1 lb	4 (2500 lb) Capacity load cells (NTEP Certified)	Carbon Steel	Yes	LS-7510-LED or LCD
LS-800-4X4-10K	10,000	2 lb	4 (5000 lb) Capacity load cells (NTEP Certified)	Carbon Steel	Yes	LS-7510-LED or LCD
LS-800-4X4-20K	20,000	5 lb	4 (10,000 lb) Capacity load cells (NTEP Certified)	Carbon Steel	Yes	LS-7510-LED or LCD
LS-800-4X5-1K	1,000	.2 lb	4 (500 lb) Capacity load cells (NTEP Certified)	Carbon Steel	Yes	LS-7510-LED or LCD
LS-800-4X5-2.5K	2,500	.5 lb	4 (1000 lb) Capacity load cells (NTEP Certified)	Carbon Steel	Yes	LS-7510-LED or LCD
LS-800-4X5-5K	5,000	1 lb	4 (2500 lb) Capacity load cells (NTEP Certified)	Carbon Steel	Yes	LS-7510-LED or LCD
LS-800-4X5-10K	10,000	2 lb	4 (5000 lb) Capacity load cells (NTEP Certified)	Carbon Steel	Yes	LS-7510-LED or LCD
LS-800-4X6-1K	1,000	.2 lb	4 (500 lb) Capacity load cells (NTEP Certified)	Carbon Steel	Yes	LS-7510-LED or LCD
LS-800-4X6-2.5K	2,500	.5 lb	4 (1000 lb) Capacity load cells (NTEP Certified)	Carbon Steel	Yes	LS-7510-LED or LCD
LS-800-4X6-5K	5,000	1 lb	4 (2500 lb) Capacity load cells (NTEP Certified)	Carbon Steel	Yes	LS-7510-LED or LCD
LS-800-4X6-10K	10,000	2 lb	4 (5000 lb) Capacity load cells (NTEP Certified)	Carbon Steel	Yes	LS-7510-LED or LCD
LS-800-4X8-1K	1,000	.2 lb	4 (500 lb) Capacity load cells (NTEP Certified)	Carbon Steel	Yes	LS-7510-LED or LCD
LS-800-4X8-2.5K	2,500	.5 lb	4 (1000 lb) Capacity load cells (NTEP Certified)	Carbon Steel	Yes	LS-7510-LED or LCD
LS-800-4X8-5K	5,000	1 lb	4 (2500 lb) Capacity load cells (NTEP Certified)	Carbon Steel	Yes	LS-7510-LED or LCD
LS-800-4X8-10K	10,000	2 lb	4 (5000 lb) Capacity load cells (NTEP Certified)	Carbon Steel	Yes	LS-7510-LED or LCD
LS-800-4X8-20K	20,000	5 lb	4 (10,000 lb) Capacity load cells (NTEP Certified)	Carbon Steel	Yes	LS-7510-LED or LCD
LS-800-5X5-1K	1,000	.2 lb	4 (500 lb) Capacity load cells (NTEP Certified)	Carbon Steel	Yes	LS-7510-LED or LCD
LS-800-5X5-2.5K	2,500	.5 lb	4 (1000 lb) Capacity load cells (NTEP Certified)	Carbon Steel	Yes	LS-7510-LED or LCD
LS-800-5X5-5K	5,000	1 lb	4 (2500 lb) Capacity load cells (NTEP Certified)	Carbon Steel	Yes	LS-7510-LED or LCD
LS-800-5X5-10K	10,000	2 lb	4 (5000 lb) Capacity load cells (NTEP Certified)	Carbon Steel	Yes	LS-7510-LED or LCD
LS-800-5X5-20K	20,000	5 lb	4 (10,000 lb) Capacity load cells (NTEP Certified)	Carbon Steel	Yes	LS-7510-LED or LCD
LS-800-5X7-1K	1,000	.2 lb	4 (500 lb) Capacity load cells (NTEP Certified)	Carbon Steel	Yes	LS-7510-LED or LCD
LS-800-5X7-2.5K	2,500	.5 lb	4 (1000 lb) Capacity load cells (NTEP Certified)	Carbon Steel	Yes	LS-7510-LED or LCD
LS-800-5X7-5K	5,000	1 lb	4 (2500 lb) Capacity load cells (NTEP Certified)	Carbon Steel	Yes	LS-7510-LED or LCD
LS-800-5X7-10K	10,000	2 lb	4 (5000 lb) Capacity load cells (NTEP Certified)	Carbon Steel	Yes	LS-7510-LED or LCD



LS-800

NTEP HEAVY DUTY FLOOR SCALES

MODELS	CAPACITY in lb	ACCURACY	LOAD CELLS USED	SCALE BASE MATERIAL	NTEP	INDICATOR
LS-800-5X7-20K	20,000	5 lb	4 (10,000 lb) Capacity load cells (NTEP Certified)	Carbon Steel	Yes	LS-7510-LED or LCD
LS-800-5X8-1K	1,000	.2 lb	4 (500 lb) Capacity load cells (NTEP Certified)	Carbon Steel	Yes	LS-7510-LED or LCD
LS-800-5X8-2.5K	2,500	.5 lb	4 (1000 lb) Capacity load cells (NTEP Certified)	Carbon Steel	Yes	LS-7510-LED or LCD
LS-800-5X8-5K	5,000	1 lb	4 (2500 lb) Capacity load cells (NTEP Certified)	Carbon Steel	Yes	LS-7510-LED or LCD
LS-800-5X8-10K	10,000	2 lb	4 (5000 lb) Capacity load cells (NTEP Certified)	Carbon Steel	Yes	LS-7510-LED or LCD
LS-800-5X8-20K	20,000	5 lb	4 (10,000 lb) Capacity load cells (NTEP Certified)	Carbon Steel	Yes	LS-7510-LED or LCD
LS-800-6X6-1K	1000	.2 lb	4 (500 lb) Capacity load cells (NTEP Certified)	Carbon Steel	Yes	LS-7510-LED or LCD
LS-800-6X6-2.5K	2500	.5 lb	4 (1000 lb) Capacity load cells (NTEP Certified)	Carbon Steel	Yes	LS-7510-LED or LCD
LS-800-6X6-5K	5000	1 lb	4 (2500 lb) Capacity load cells (NTEP Certified)	Carbon Steel	Yes	LS-7510-LED or LCD
LS-800-6X6-10K	10,000	2 lb	4 (5000 lb) Capacity load cells (NTEP Certified)	Carbon Steel	Yes	LS-7510-LED or LCD
LS-800-6X6-20K	20,000	5 lb	4 (10,000 lb) Capacity load cells (NTEP Certified)	Carbon Steel	Yes	LS-7510-LED or LCD
LS-800-7X7-1K	1,000	.2 lb	4 (500 lb) Capacity load cells (NTEP Certified)	Carbon Steel	Yes	LS-7510-LED or LCD
LS-800-7X7-2.5K	2,500	.5 lb	4 (1000 lb) Capacity load cells (NTEP Certified)	Carbon Steel	Yes	LS-7510-LED or LCD
LS-800-7X7-5K	5,000	1 lb	4 (2500 lb) Capacity load cells (NTEP Certified)	Carbon Steel	Yes	LS-7510-LED or LCD
LS-800-7X7-10K	10,000	2 lb	4 (5000 lb) Capacity load cells (NTEP Certified)	Carbon Steel	Yes	LS-7510-LED or LCD
LS-800-7X7-20K	20,000	5 lb	4 (10,000 lb) Capacity load cells (NTEP Certified)	Carbon Steel	Yes	LS-7510-LED or LCD





LS-800-SS

NTEP STAINLESS STEEL FIX TOP FLOOR SCALES



FEATURES

- ✓ Stainless Steel fixed top smooth deck
- ✓ Anti-corrosion, Full Stainless steel structure
- ✓ Channel construction for superior strength
- ✓ Stainless steel junction box
- ✓ Four NTEP certified laser welded and sealed IP68 stainless steel load cells
- ✓ Load cell capacity is 2X the scale capacity for a 200% overload protection
- ✓ Four adjustable stainless steel ball capture support feet
- ✓ 15' heavy duty stainless steel shielded cable
- ✓ Factory pre-calibrated for quick setup
- ✓ NTEP COC #: 22-056

OPTIONAL ACCESSORIES

- Thermal printers
- Scoreboard (Large Display)
- Pit-frame or portability frames
- Data Collection Software
- Access Ramps
- Indicator stands
- Explosion proof upgrade
- Water-resistant upgrades
- Bumper Guards (Impact protection)
- Output systems (4-20ma or 0-5V Relay)
- Wireless (Cordless connection)

OPTIONAL INDICATOR

Stainless Steel: **Fully Washdown indicators :**

LS-7510-SS-E-12 LS-7510-LS-E-13 (LED Power Supply Only) , LS-7510-LS-E-23 (LED Power Supply & Battery)

LS-7510-SS-C-12 LS-7510-LS-C-13 (LCD Power Supply Only), LS-7510-LS-C-23 (LCD Power Supply & Battery)

SMOOTH SURFACE MODEL

MODELS	CAPACITY in lb	ACCURACY	LOAD CELLS USED	SCALE BASE MATERIAL	NTEP	INDICATOR
LS-800-SS-2X2-1K	1,000	.2 lb	4 (500 lb) Capacity Stainless steel load cells	304 Stainless steel	Yes	LS-7510-LED or LCD
LS-800-SS-2X2-2.5K	2,500	.5 lb	4 (1000 lb) Capacity Stainless steel load cells	304 Stainless steel	Yes	LS-7510-LED or LCD
LS-800-SS-2X2-5K	5,000	1 lb	4 (2500 lb) Capacity Stainless steel load cells	304 Stainless steel	Yes	LS-7510-LED or LCD
LS-800-SS-2X3-1K	1,000	.2 lb	4 (500 lb) Capacity Stainless steel load cells	304 Stainless steel	Yes	LS-7510-LED or LCD
LS-800-SS-2X3-2.5K	2,500	.5 lb	4 (1000 lb) Capacity Stainless steel load cells	304 Stainless steel	Yes	LS-7510-LED or LCD
LS-800-SS-2X3-5K	5,000	1 lb	4 (2500 lb) Capacity Stainless steel load cells	304 Stainless steel	Yes	LS-7510-LED or LCD



LS-800-SS

NTEP STAINLESS STEEL FIX TOP FLOOR SCALES

MODELS	CAPACITY in lb	ACCURACY	LOAD CELLS USED	SCALE BASE MATERIAL	NTEP	INDICATOR
LS-800-SS-3X3-1K	1,000	.2 lb	4 (500 lb) Capacity Stainless steel load cells	304 Stainless steel	Yes	LS-7510-LED or LCD
LS-800-SS-3X3-2.5K	2,500	.5 lb	4 (1000 lb) Capacity Stainless steel load cells	304 Stainless steel	Yes	LS-7510-LED or LCD
LS-800-SS-3X3-5K	5,000	1 lb	4 (2500 lb) Capacity Stainless steel load cells	304 Stainless steel	Yes	LS-7510-LED or LCD
LS-800-SS-4X4-1K	1,000	.2 lb	4 (500 lb) Capacity Stainless steel load cells	304 Stainless steel	Yes	LS-7510-LED or LCD
LS-800-SS-4X4-2.5K	2,500	.5 lb	4 (1000 lb) Capacity Stainless steel load cells	304 Stainless steel	Yes	LS-7510-LED or LCD
LS-800-SS-4X4-5K	5,000	1 lb	4 (2500 lb) Capacity Stainless steel load cells	304 Stainless steel	Yes	LS-7510-LED or LCD
LS-800-SS-4X4-10K	10,000	2 lb	4 (5000 lb) Capacity Stainless steel load cells	304 Stainless steel	Yes	LS-7510-LED or LCD
LS-800-SS-4X5-1K	1,000	.2 lb	4 (500 lb) Capacity Stainless steel load cells	304 Stainless steel	Yes	LS-7510-LED or LCD
LS-800-SS-4X5-2.5K	2,500	.5 lb	4 (1000 lb) Capacity Stainless steel load cells	304 Stainless steel	Yes	LS-7510-LED or LCD
LS-800-SS-4X5-5K	5,000	1 lb	4 (2500 lb) Capacity Stainless steel load cells	304 Stainless steel	Yes	LS-7510-LED or LCD
LS-800-SS-4X5-10K	10,000	2 lb	4 (5000 lb) Capacity Stainless steel load cells	304 Stainless steel	Yes	LS-7510-LED or LCD
LS-800-SS-4X6-1K	1,000	.2 lb	4 (500 lb) Capacity Stainless steel load cells	304 Stainless steel	Yes	LS-7510-LED or LCD
LS-800-SS-4X6-2.5K	2,500	.5 lb	4 (1000 lb) Capacity Stainless steel load cells	304 Stainless steel	Yes	LS-7510-LED or LCD
LS-800-SS-4X6-5K	5,000	1 lb	4 (2500 lb) Capacity Stainless steel load cells	304 Stainless steel	Yes	LS-7510-LED or LCD
LS-800-SS-4X6-10K	10,000	2 lb	4 (5000 lb) Capacity Stainless steel load cells	304 Stainless steel	Yes	LS-7510-LED or LCD
LS-800-SS-4X8-1K	1,000	.2 lb	4 (500 lb) Capacity Stainless steel load cells	304 Stainless steel	Yes	LS-7510-LED or LCD
LS-800-SS-4X8-2.5K	2,500	.5 lb	4 (1000 lb) Capacity Stainless steel load cells	304 Stainless steel	Yes	LS-7510-LED or LCD
LS-800-SS-4X8-5K	5,000	1 lb	4 (2500 lb) Capacity Stainless steel load cells	304 Stainless steel	Yes	LS-7510-LED or LCD
LS-800-SS-4X8-10K	10,000	2 lb	4 (5000 lb) Capacity Stainless steel load cells	304 Stainless steel	Yes	LS-7510-LED or LCD
LS-800-SS-5X5-1K	1,000	.2 lb	4 (500 lb) Capacity Stainless steel load cells	304 Stainless steel	Yes	LS-7510-LED or LCD
LS-800-SS-5X5-2.5K	2,500	.5 lb	4 (1000 lb) Capacity Stainless steel load cells	304 Stainless steel	Yes	LS-7510-LED or LCD
LS-800-SS-5X5-5K	5,000	1 lb	4 (2500 lb) Capacity Stainless steel load cells	304 Stainless steel	Yes	LS-7510-LED or LCD
LS-800-SS-5X5-10K	10,000	2 lb	4 (5000 lb) Capacity Stainless steel load cells	304 Stainless steel	Yes	LS-7510-LED or LCD
LS-800-SS-5X7-1K	1,000	.2 lb	4 (500 lb) Capacity Stainless steel load cells	304 Stainless steel	Yes	LS-7510-LED or LCD
LS-800-SS-5X7-2.5K	2,500	.5 lb	4 (1000 lb) Capacity Stainless steel load cells	304 Stainless steel	Yes	LS-7510-LED or LCD
LS-800-SS-5X7-5K	5,000	1 lb	4 (2500 lb) Capacity Stainless steel load cells	304 Stainless steel	Yes	LS-7510-LED or LCD
LS-800-SS-5X7-10K	10,000	2 lb	4 (5000 lb) Capacity Stainless steel load cells	304 Stainless steel	Yes	LS-7510-LED or LCD
LS-800-SS-5X8-1K	1,000	.2 lb	4 (500 lb) Capacity Stainless steel load cells	304 Stainless steel	Yes	LS-7510-LED or LCD
LS-800-SS-5X8-2.5K	2,500	.5 lb	4 (1000 lb) Capacity Stainless steel load cells	304 Stainless steel	Yes	LS-7510-LED or LCD
LS-800-SS-5X8-5K	5,000	1 lb	4 (2500 lb) Capacity Stainless steel load cells	304 Stainless steel	Yes	LS-7510-LED or LCD



LS-800-SS

NTEP STAINLESS STEEL FIX TOP FLOOR SCALES

MODELS	CAPACITY in lb	ACCURACY	LOAD CELLS USED	SCALE BASE MATERIAL	NTEP	INDICATOR
LS-800-SS-5X8-10K	10,000	2 lb	4 (5000 lb) Capacity Stainless steel load cells	304 Stainless steel	Yes	LS-7510-LED or LCD
LS-800-SS-6X6-1K	1,000	.2 lb	4 (500 lb) Capacity Stainless steel load cells	304 Stainless steel	Yes	LS-7510-LED or LCD
LS-800-SS-6X6-2.5K	2,500	.5 lb	4 (1000 lb) Capacity Stainless steel load cells	304 Stainless steel	Yes	LS-7510-LED or LCD
LS-800-SS-6X6-5K	5,000	1 lb	4 (2500 lb) Capacity Stainless steel load cells	304 Stainless steel	Yes	LS-7510-LED or LCD
LS-800-SS-6X6-10K	10,000	5 lb	4 (5000 lb) Capacity Stainless steel load cells	304 Stainless steel	Yes	LS-7510-LED or LCD
LS-800-SS-7X7-1K	1,000	.2 lb	4 (500 lb) Capacity Stainless steel load cells	304 Stainless steel	Yes	LS-7510-LED or LCD
LS-800-SS-7X7-2.5K	2,500	.5 lb	4 (1000 lb) Capacity Stainless steel load cells	304 Stainless steel	Yes	LS-7510-LED or LCD
LS-800-SS-7X7-5K	5,000	1 lb	4 (2500 lb) Capacity Stainless steel load cells	304 Stainless steel	Yes	LS-7510-LED or LCD
LS-800-SS-7X7-10K	10,000	2 lb	4 (5000 lb) Capacity Stainless steel load cells	304 Stainless steel	Yes	LS-7510-LED or LCD

DIAMOND PLATE SURFACE MODEL

MODELS	CAPACITY in lb	ACCURACY	LOAD CELLS USED	SCALE BASE MATERIAL	NTEP	INDICATOR
LS-800-SS-DP-2X2-1K	1,000	.2 lb	4 (500 lb) Capacity Stainless steel load cells	304 Stainless steel	Yes	LS-7510-LED or LCD
LS-800-SS-DP-2X2-2.5K	2,500	.5 lb	4 (1000 lb) Capacity Stainless steel load cells	304 Stainless steel	Yes	LS-7510-LED or LCD
LS-800-SS-DP-2X2-5K	5,000	1 lb	4 (2500 lb) Capacity Stainless steel load cells	304 Stainless steel	Yes	LS-7510-LED or LCD
LS-800-SS-DP-2X3-1K	1,000	.2 lb	4 (500 lb) Capacity Stainless steel load cells	304 Stainless steel	Yes	LS-7510-LED or LCD
LS-800-SS-DP-2X3-2.5K	2,500	.5 lb	4 (1000 lb) Capacity Stainless steel load cells	304 Stainless steel	Yes	LS-7510-LED or LCD
LS-800-SS-DP-2X3-5K	5,000	1 lb	4 (2500 lb) Capacity Stainless steel load cells	304 Stainless steel	Yes	LS-7510-LED or LCD
LS-800-SS-DP-3X3-1K	1,000	.2 lb	4 (500 lb) Capacity Stainless steel load cells	304 Stainless steel	Yes	LS-7510-LED or LCD
LS-800-SS-DP-3X3-2.5K	2,500	.5 lb	4 (1000 lb) Capacity Stainless steel load cells	304 Stainless steel	Yes	LS-7510-LED or LCD
LS-800-SS-DP-3X3-5K	5,000	1 lb	4 (2500 lb) Capacity Stainless steel load cells	304 Stainless steel	Yes	LS-7510-LED or LCD
LS-800-SS-DP-4X4-1K	1,000	.2 lb	4 (500 lb) Capacity Stainless steel load cells	304 Stainless steel	Yes	LS-7510-LED or LCD
LS-800-SS-DP-4X4-2.5K	2,500	.5 lb	4 (1000 lb) Capacity Stainless steel load cells	304 Stainless steel	Yes	LS-7510-LED or LCD
LS-800-SS-DP-4X4-5K	5,000	1 lb	4 (2500 lb) Capacity Stainless steel load cells	304 Stainless steel	Yes	LS-7510-LED or LCD
LS-800-SS-DP-4X4-10K	10,000	2 lb	4 (5000 lb) Capacity Stainless steel load cells	304 Stainless steel	Yes	LS-7510-LED or LCD
LS-800-SS-DP-4X5-1K	1,000	.2 lb	4 (500 lb) Capacity Stainless steel load cells	304 Stainless steel	Yes	LS-7510-LED or LCD
LS-800-SS-DP-4X5-2.5K	2,500	.5 lb	4 (1000 lb) Capacity Stainless steel load cells	304 Stainless steel	Yes	LS-7510-LED or LCD
LS-800-SS-DP-4X5-5K	5,000	1 lb	4 (2500 lb) Capacity Stainless steel load cells	304 Stainless steel	Yes	LS-7510-LED or LCD



LS-800-SS

NTEP STAINLESS STEEL FIX TOP FLOOR SCALES

MODELS	CAPACITY in lb	ACCURACY	LOAD CELLS USED	SCALE BASE MATERIAL	NTEP	INDICATOR
LS-800-SS-DP-4X5-10K	10,000	2 lb	4 (5000 lb) Capacity Stainless steel load cells	304 Stainless steel	Yes	LS-7510-LED or LCD
LS-800-SS-DP-4X6-1K	1,000	.2 lb	4 (500 lb) Capacity Stainless steel load cells	304 Stainless steel	Yes	LS-7510-LED or LCD
LS-800-SS-DP-4X6-2.5K	2,500	.5 lb	4 (1000 lb) Capacity Stainless steel load cells	304 Stainless steel	Yes	LS-7510-LED or LCD
LS-800-SS-DP-4X6-5K	5,000	1 lb	4 (2500 lb) Capacity Stainless steel load cells	304 Stainless steel	Yes	LS-7510-LED or LCD
LS-800-SS-DP-4X6-10K	10,000	2 lb	4 (5000 lb) Capacity Stainless steel load cells	304 Stainless steel	Yes	LS-7510-LED or LCD
LS-800-SS-DP-4X8-1K	1,000	.2 lb	4 (500 lb) Capacity Stainless steel load cells	304 Stainless steel	Yes	LS-7510-LED or LCD
LS-800-SS-DP-4X8-2.5K	2,500	.5 lb	4 (1000 lb) Capacity Stainless steel load cells	304 Stainless steel	Yes	LS-7510-LED or LCD
LS-800-SS-DP-4X8-5K	5,000	1 lb	4 (2500 lb) Capacity Stainless steel load cells	304 Stainless steel	Yes	LS-7510-LED or LCD
LS-800-SS-DP-4X8-10K	10,000	2 lb	4 (5000 lb) Capacity Stainless steel load cells	304 Stainless steel	Yes	LS-7510-LED or LCD
LS-800-SS-DP-5X5-1K	1,000	.2 lb	4 (500 lb) Capacity Stainless steel load cells	304 Stainless steel	Yes	LS-7510-LED or LCD
LS-800-SS-DP-5X5-2.5K	2,500	.5 lb	4 (1000 lb) Capacity Stainless steel load cells	304 Stainless steel	Yes	LS-7510-LED or LCD
LS-800-SS-DP-5X5-5K	5,000	1 lb	4 (2500 lb) Capacity Stainless steel load cells	304 Stainless steel	Yes	LS-7510-LED or LCD
LS-800-SS-DP-5X5-10K	10,000	2 lb	4 (5000 lb) Capacity Stainless steel load cells	304 Stainless steel	Yes	LS-7510-LED or LCD
LS-800-SS-DP-5X7-1K	1,000	.2 lb	4 (500 lb) Capacity Stainless steel load cells	304 Stainless steel	Yes	LS-7510-LED or LCD
LS-800-SS-DP-5X7-2.5K	2,500	.5 lb	4 (1000 lb) Capacity Stainless steel load cells	304 Stainless steel	Yes	LS-7510-LED or LCD
LS-800-SS-DP-5X7-5K	5,000	1 lb	4 (2500 lb) Capacity Stainless steel load cells	304 Stainless steel	Yes	LS-7510-LED or LCD
LS-800-SS-DP-5X7-10K	10,000	2 lb	4 (5000 lb) Capacity Stainless steel load cells	304 Stainless steel	Yes	LS-7510-LED or LCD
LS-800-SS-DP-5X8-1K	1,000	.2 lb	4 (500 lb) Capacity Stainless steel load cells	304 Stainless steel	Yes	LS-7510-LED or LCD
LS-800-SS-DP-5X8-2.5K	2,500	.5 lb	4 (1000 lb) Capacity Stainless steel load cells	304 Stainless steel	Yes	LS-7510-LED or LCD
LS-800-SS-DP-5X8-5K	5,000	1 lb	4 (2500 lb) Capacity Stainless steel load cells	304 Stainless steel	Yes	LS-7510-LED or LCD
LS-800-SS-DP-5X8-10K	10,000	2 lb	4 (5000 lb) Capacity Stainless steel load cells	304 Stainless steel	Yes	LS-7510-LED or LCD
LS-800-SS-DP-6X6-1K	1,000	.2 lb	4 (500 lb) Capacity Stainless steel load cells	304 Stainless steel	Yes	LS-7510-LED or LCD
LS-800-SS-DP-6X6-2.5K	2,500	.5 lb	4 (1000 lb) Capacity Stainless steel load cells	304 Stainless steel	Yes	LS-7510-LED or LCD
LS-800-SS-DP-6X6-5K	5,000	1 lb	4 (2500 lb) Capacity Stainless steel load cells	304 Stainless steel	Yes	LS-7510-LED or LCD
LS-800-SS-DP-6X6-10K	10,000	5 lb	4 (5000 lb) Capacity Stainless steel load cells	304 Stainless steel	Yes	LS-7510-LED or LCD
LS-800-SS-DP-7X7-1K	1,000	.2 lb	4 (500 lb) Capacity Stainless steel load cells	304 Stainless steel	Yes	LS-7510-LED or LCD
LS-800-SS-DP-7X7-2.5K	2,500	.5 lb	4 (1000 lb) Capacity Stainless steel load cells	304 Stainless steel	Yes	LS-7510-LED or LCD
LS-800-SS-DP-7X7-5K	5,000	1 lb	4 (2500 lb) Capacity Stainless steel load cells	304 Stainless steel	Yes	LS-7510-LED or LCD
LS-800-SS-DP-7X7-10K	10,000	2 lb	4 (5000 lb) Capacity Stainless steel load cells	304 Stainless steel	Yes	LS-7510-LED or LCD



LS-800-SS-LT

NTEP STAINLESS STEEL LIFT TOP FLOOR SCALES



- ### FEATURES
- ✓ Hydraulic manual top lifts for easy washdown
 - ✓ 304 stainless steel construction with safety diamond tread plate deck
 - ✓ Stainless steel single lift or double lift doors available.
 - ✓ NEMA 4X watertight stainless steel junction box
 - ✓ Side access to junction box to minimize water access
 - ✓ Four NTEP certified laser welded and sealed IP68 stainless steel load cells
 - ✓ Load cell capacity is 2X the scale capacity for a 200% overload protection
 - ✓ Four adjustable stainless steel ball capture support feet
 - ✓ 15' heavy duty stainless steel shielded cable
 - ✓ Factory pre-calibrated for quick setup
 - ✓ NTEP COC #: 22-056

- ### OPTIONAL ACCESSORIES
- Thermal printers
 - Scoreboard (Large Display)
 - Pit-frame or portability frames
 - Data Collection Software
 - Access Ramps
 - Indicator stands
 - Explosion proof upgrade
 - Water-resistant upgrades
 - Bumper Guards (Impact protection)
 - Output systems (4-20ma or 0-5V Relay)
 - Wireless (Cordless connection)

SMOOTH SURFACE MODEL

MODELS	CAPACITY in lb	ACCURACY	LOAD CELLS USED	SCALE BASE MATERIAL	NTEP	INDICATOR
LS-800-SS-LT-3X3-1K	1,000	.2 lb	4 (500 lb) Capacity Stainless steel load cells	304 Stainless steel	Yes	LS-7510-LED or LCD
LS-800-SS-LT-3X3-2.5K	2,500	.5 lb	4 (1000 lb) Capacity Stainless steel load cells	304 Stainless steel	Yes	LS-7510-LED or LCD
LS-800-SS-LT-3X3-5K	5,000	1 lb	4 (2500 lb) Capacity Stainless steel load cells	304 Stainless steel	Yes	LS-7510-LED or LCD
LS-800-SS-LT-4X4-1K	1,000	.2 lb	4 (500 lb) Capacity Stainless steel load cells	304 Stainless steel	Yes	LS-7510-LED or LCD
LS-800-SS-LT-4X4-2.5K	2,500	.5 lb	4 (1000 lb) Capacity Stainless steel load cells	304 Stainless steel	Yes	LS-7510-LED or LCD
LS-800-SS-LT-4X4-5K	5,000	1 lb	4 (2500 lb) Capacity Stainless steel load cells	304 Stainless steel	Yes	LS-7510-LED or LCD



LS-800-SS-LT

NTEP STAINLESS STEEL LIFT TOP FLOOR SCALES

MODELS	CAPACITY in lb	ACCURACY	LOAD CELLS USED	SCALE BASE MATERIAL	NTEP	INDICATOR
LS-800-SS-LT-4X4-10K	10,000	2 lb	4 (5000 lb) Capacity Stainless steel load cells	304 Stainless steel	Yes	LS-7510-LED or LCD
LS-800-SS-LT-4X5-1K	1,000	.2 lb	4 (500 lb) Capacity Stainless steel load cells	304 Stainless steel	Yes	LS-7510-LED or LCD
LS-800-SS-LT-4X5-2.5K	2,500	.5 lb	4 (1000 lb) Capacity Stainless steel load cells	304 Stainless steel	Yes	LS-7510-LED or LCD
LS-800-SS-LT-4X5-5K	5,000	1 lb	4 (2500 lb) Capacity Stainless steel load cells	304 Stainless steel	Yes	LS-7510-LED or LCD
LS-800-SS-LT-4X5-10K	10,000	2 lb	4 (5000 lb) Capacity Stainless steel load cells	304 Stainless steel	Yes	LS-7510-LED or LCD
LS-800-SS-LT-4X6-1K	1,000	.2 lb	4 (500 lb) Capacity Stainless steel load cells	304 Stainless steel	Yes	LS-7510-LED or LCD
LS-800-SS-LT-4X6-2.5K	2,500	.5 lb	4 (1000 lb) Capacity Stainless steel load cells	304 Stainless steel	Yes	LS-7510-LED or LCD
LS-800-SS-LT-4X6-5K	5,000	1 lb	4 (2500 lb) Capacity Stainless steel load cells	304 Stainless steel	Yes	LS-7510-LED or LCD
LS-800-SS-LT-4X6-10K	10,000	2 lb	4 (5000 lb) Capacity Stainless steel load cells	304 Stainless steel	Yes	LS-7510-LED or LCD
LS-800-SS-LT-4X8-1K	1,000	.2 lb	4 (500 lb) Capacity Stainless steel load cells	304 Stainless steel	Yes	LS-7510-LED or LCD
LS-800-SS-LT-4X8-2.5K	2,500	.5 lb	4 (1000 lb) Capacity Stainless steel load cells	304 Stainless steel	Yes	LS-7510-LED or LCD
LS-800-SS-LT-4X8-5K	5,000	1 lb	4 (2500 lb) Capacity Stainless steel load cells	304 Stainless steel	Yes	LS-7510-LED or LCD
LS-800-SS-LT-4X8-10K	10,000	2 lb	4 (5000 lb) Capacity Stainless steel load cells	304 Stainless steel	Yes	LS-7510-LED or LCD
LS-800-SS-LT-5X5-1K	1,000	.2 lb	4 (500 lb) Capacity Stainless steel load cells	304 Stainless steel	Yes	LS-7510-LED or LCD
LS-800-SS-LT-5X5-2.5K	2,500	.5 lb	4 (1000 lb) Capacity Stainless steel load cells	304 Stainless steel	Yes	LS-7510-LED or LCD
LS-800-SS-LT-5X5-5K	5,000	1 lb	4 (2500 lb) Capacity Stainless steel load cells	304 Stainless steel	Yes	LS-7510-LED or LCD
LS-800-SS-LT-5X5-10K	10,000	2 lb	4 (5000 lb) Capacity Stainless steel load cells	304 Stainless steel	Yes	LS-7510-LED or LCD
LS-800-SS-LT-5X7-1K	1,000	.2 lb	4 (500 lb) Capacity Stainless steel load cells	304 Stainless steel	Yes	LS-7510-LED or LCD
LS-800-SS-LT-5X7-2.5K	2,500	.5 lb	4 (1000 lb) Capacity Stainless steel load cells	304 Stainless steel	Yes	LS-7510-LED or LCD
LS-800-SS-LT-5X7-5K	5,000	1 lb	4 (2500 lb) Capacity Stainless steel load cells	304 Stainless steel	Yes	LS-7510-LED or LCD
LS-800-SS-LT-5X7-10K	10,000	2 lb	4 (5000 lb) Capacity Stainless steel load cells	304 Stainless steel	Yes	LS-7510-LED or LCD
LS-800-SS-LT-5X8-1K	1,000	.2 lb	4 (500 lb) Capacity Stainless steel load cells	304 Stainless steel	Yes	LS-7510-LED or LCD
LS-800-SS-LT-5X8-2.5K	2,500	.5 lb	4 (1000 lb) Capacity Stainless steel load cells	304 Stainless steel	Yes	LS-7510-LED or LCD
LS-800-SS-LT-5X8-5K	5,000	1 lb	4 (2500 lb) Capacity Stainless steel load cells	304 Stainless steel	Yes	LS-7510-LED or LCD
LS-800-SS-LT-5X8-10K	10,000	2 lb	4 (5000 lb) Capacity Stainless steel load cells	304 Stainless steel	Yes	LS-7510-LED or LCD
LS-800-SS-LT-6X6-1K	1,000	.2 lb	4 (500 lb) Capacity Stainless steel load cells	304 Stainless steel	Yes	LS-7510-LED or LCD
LS-800-SS-LT-6X6-2.5K	2,500	.5 lb	4 (1000 lb) Capacity Stainless steel load cells	304 Stainless steel	Yes	LS-7510-LED or LCD
LS-800-SS-LT-6X6-5K	5,000	1 lb	4 (2500 lb) Capacity Stainless steel load cells	304 Stainless steel	Yes	LS-7510-LED or LCD
LS-800-SS-LT-6X6-10K	10,000	2 lb	4 (5000 lb) Capacity Stainless steel load cells	304 Stainless steel	Yes	LS-7510-LED or LCD
LS-800-SS-LT-7X7-1K	1,000	.2 lb	4 (500 lb) Capacity Stainless steel load cells	304 Stainless steel	Yes	LS-7510-LED or LCD



LS-800-SS-LT

NTEP STAINLESS STEEL LIFT TOP FLOOR SCALES

MODELS	CAPACITY in lb	ACCURACY	LOAD CELLS USED	SCALE BASE MATERIAL	NTEP	INDICATOR
LS-800-SS-LT-7X7-2.5K	2,500	.5 lb	4 (1000 lb) Capacity Stainless steel load cells	304 Stainless steel	Yes	LS-7510-LED or LCD
LS-800-SS-LT-7X7-5K	5,000	1 lb	4 (2500 lb) Capacity Stainless steel load cells	304 Stainless steel	Yes	LS-7510-LED or LCD
LS-800-SS-LT-7X7-10K	10,000	2 lb	4 (5000 lb) Capacity Stainless steel load cells	304 Stainless steel	Yes	LS-7510-LED or LCD

DIAMOND PLATE SURFACE MODEL

MODELS	CAPACITY in lb	ACCURACY	LOAD CELLS USED	SCALE BASE MATERIAL	NTEP	INDICATOR
LS-800-SS-LTDP-3X3-1K	1,000	.2 lb	4 (500 lb) Capacity Stainless steel load cells	304 Stainless steel	Yes	LS-7510-LED or LCD
LS-800-SS-LTDP-3X3-2.5K	2,500	.5 lb	4 (1000 lb) Capacity Stainless steel load cells	304 Stainless steel	Yes	LS-7510-LED or LCD
LS-800-SS-LTDP-3X3-5K	5,000	1 lb	4 (2500 lb) Capacity Stainless steel load cells	304 Stainless steel	Yes	LS-7510-LED or LCD
LS-800-SS-LTDP-4X4-1K	1,000	.2 lb	4 (500 lb) Capacity Stainless steel load cells	304 Stainless steel	Yes	LS-7510-LED or LCD
LS-800-SS-LTDP-4X4-2.5K	2,500	.5 lb	4 (1000 lb) Capacity Stainless steel load cells	304 Stainless steel	Yes	LS-7510-LED or LCD
LS-800-SS-LTDP-4X4-5K	5,000	1 lb	4 (2500 lb) Capacity Stainless steel load cells	304 Stainless steel	Yes	LS-7510-LED or LCD
LS-800-SS-LTDP-4X4-10K	10,000	2 lb	4 (5000 lb) Capacity Stainless steel load cells	304 Stainless steel	Yes	LS-7510-LED or LCD
LS-800-SS-LTDP-4X5-1K	1,000	.2 lb	4 (500 lb) Capacity Stainless steel load cells	304 Stainless steel	Yes	LS-7510-LED or LCD
LS-800-SS-LTDP-4X5-2.5K	2,500	.5 lb	4 (1000 lb) Capacity Stainless steel load cells	304 Stainless steel	Yes	LS-7510-LED or LCD
LS-800-SS-LTDP-4X5-5K	5,000	1 lb	4 (2500 lb) Capacity Stainless steel load cells	304 Stainless steel	Yes	LS-7510-LED or LCD
LS-800-SS-LTDP-4X5-10K	10,000	2 lb	4 (5000 lb) Capacity Stainless steel load cells	304 Stainless steel	Yes	LS-7510-LED or LCD
LS-800-SS-LTDP-4X6-1K	1,000	.2 lb	4 (500 lb) Capacity Stainless steel load cells	304 Stainless steel	Yes	LS-7510-LED or LCD
LS-800-SS-LTDP-4X6-2.5K	2,500	.5 lb	4 (1000 lb) Capacity Stainless steel load cells	304 Stainless steel	Yes	LS-7510-LED or LCD
LS-800-SS-LTDP-4X6-5K	5,000	1 lb	4 (2500 lb) Capacity Stainless steel load cells	304 Stainless steel	Yes	LS-7510-LED or LCD
LS-800-SS-LTDP-4X6-10K	10,000	2 lb	4 (5000 lb) Capacity Stainless steel load cells	304 Stainless steel	Yes	LS-7510-LED or LCD
LS-800-SS-LTDP-4X8-1K	1,000	.2 lb	4 (500 lb) Capacity Stainless steel load cells	304 Stainless steel	Yes	LS-7510-LED or LCD
LS-800-SS-LTDP-4X8-2.5K	2,500	.5 lb	4 (1000 lb) Capacity Stainless steel load cells	304 Stainless steel	Yes	LS-7510-LED or LCD
LS-800-SS-LTDP-4X8-5K	5,000	1 lb	4 (2500 lb) Capacity Stainless steel load cells	304 Stainless steel	Yes	LS-7510-LED or LCD
LS-800-SS-LTDP-4X8-10K	10,000	2 lb	4 (5000 lb) Capacity Stainless steel load cells	304 Stainless steel	Yes	LS-7510-LED or LCD
LS-800-SS-LTDP-5X5-1K	1,000	.2 lb	4 (500 lb) Capacity Stainless steel load cells	304 Stainless steel	Yes	LS-7510-LED or LCD
LS-800-SS-LTDP-5X5-2.5K	2,500	.5 lb	4 (1000 lb) Capacity Stainless steel load cells	304 Stainless steel	Yes	LS-7510-LED or LCD
LS-800-SS-LTDP-5X5-5K	5,000	1 lb	4 (2500 lb) Capacity Stainless steel load cells	304 Stainless steel	Yes	LS-7510-LED or LCD
LS-800-SS-LTDP-5X5-10K	10,000	2 lb	4 (5000 lb) Capacity Stainless steel load cells	304 Stainless steel	Yes	LS-7510-LED or LCD



LS-800-SS-LT

NTEP STAINLESS STEEL LIFT TOP FLOOR SCALES

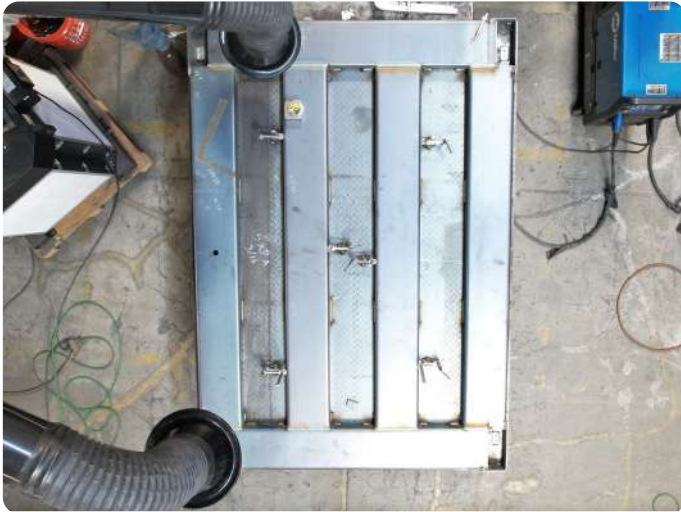
MODELS	CAPACITY in lb	ACCURACY	LOAD CELLS USED	SCALE BASE MATERIAL	NTEP	INDICATOR
LS-800-SS-LTDP-5X7-1K	1,000	.2 lb	4 (500 lb) Capacity Stainless steel load cells	304 Stainless steel	Yes	LS-7510-LED or LCD
LS-800-SS-LTDP-5X7-2.5K	2,500	.5 lb	4 (1000 lb) Capacity Stainless steel load cells	304 Stainless steel	Yes	LS-7510-LED or LCD
LS-800-SS-LTDP-5X7-5K	5,000	1 lb	4 (2500 lb) Capacity Stainless steel load cells	304 Stainless steel	Yes	LS-7510-LED or LCD
LS-800-SS-LTDP-5X7-10K	10,000	2 lb	4 (5000 lb) Capacity Stainless steel load cells	304 Stainless steel	Yes	LS-7510-LED or LCD
LS-800-SS-LTDP-5X8-1K	1,000	.2 lb	4 (500 lb) Capacity Stainless steel load cells	304 Stainless steel	Yes	LS-7510-LED or LCD
LS-800-SS-LTDP-5X8-2.5K	2,500	.5 lb	4 (1000 lb) Capacity Stainless steel load cells	304 Stainless steel	Yes	LS-7510-LED or LCD
LS-800-SS-LTDP-5X8-5K	5,000	1 lb	4 (2500 lb) Capacity Stainless steel load cells	304 Stainless steel	Yes	LS-7510-LED or LCD
LS-800-SS-LTDP-5X8-10K	10,000	2 lb	4 (5000 lb) Capacity Stainless steel load cells	304 Stainless steel	Yes	LS-7510-LED or LCD
LS-800-SS-LTDP-6X6-1K	1,000	.2 lb	4 (500 lb) Capacity Stainless steel load cells	304 Stainless steel	Yes	LS-7510-LED or LCD
LS-800-SS-LTDP-6X6-2.5K	2,500	.5 lb	4 (1000 lb) Capacity Stainless steel load cells	304 Stainless steel	Yes	LS-7510-LED or LCD
LS-800-SS-LTDP-6X6-5K	5,000	1 lb	4 (2500 lb) Capacity Stainless steel load cells	304 Stainless steel	Yes	LS-7510-LED or LCD
LS-800-SS-LTDP-6X6-10K	10,000	2 lb	4 (5000 lb) Capacity Stainless steel load cells	304 Stainless steel	Yes	LS-7510-LED or LCD
LS-800-SS-LTDP-7X7-1K	1,000	.2 lb	4 (500 lb) Capacity Stainless steel load cells	304 Stainless steel	Yes	LS-7510-LED or LCD
LS-800-SS-LTDP-7X7-2.5K	2,500	.5 lb	4 (1000 lb) Capacity Stainless steel load cells	304 Stainless steel	Yes	LS-7510-LED or LCD
LS-800-SS-LTDP-7X7-5K	5,000	1 lb	4 (2500 lb) Capacity Stainless steel load cells	304 Stainless steel	Yes	LS-7510-LED or LCD
LS-800-SS-LTDP-7X7-10K	10,000	2 lb	4 (5000 lb) Capacity Stainless steel load cells	304 Stainless steel	Yes	LS-7510-LED or LCD





LS-900

NTEP USA MADE FLOOR SCALES



FEATURES

- High Quality Made in the USA carbon Steel diamond plate construction.
- NEMA 4X watertight stainless steel junction box
- Top Access to feet & junction box for ease of adjustments or access.
- Load cell capacity is 2X the scale capacity for a 200% overload protection
- Four NTEP certified alloy steel load cells with adjustable Swivel feet
- 15' heavy duty stainless steel shielded cable
- Factory Pre-calibrated in USA
- 5 year warranty!

OPTIONAL ACCESSORIES

- Thermal printers
- Scoreboard (Large Display)
- Pit-frame or portability frames
- Data Collection Software
- Access Ramps
- Indicator stands
- Explosion proof upgrade
- Water-resistant upgrades
- Bumper Guards (Impact protection)
- Output systems (4-20ma or 0-5V Relay)
- Wireless (Cordless connection)

MODELS	CAPACITY in lb	ACCURACY	LOAD CELLS USED	SCALE BASE MATERIAL	NTEP	MANUFACTURED IN
LS-900-2X2-1K	1,000	.2 lb	24" x 24" (2' x 2')	Carbon Steel / Diamond plate	Yes	USA
LS-900-2X2-2.5K	2,500	.5 lb	24" x 24" (2' x 2')	Carbon Steel / Diamond plate	Yes	USA
LS-900-2X2-5K	5,000	1 lb	24" x 24" (2' x 2')	Carbon Steel / Diamond plate	Yes	USA
LS-900-2X3-1K	1,000	.2 lb	24" x 36" (2' x 3')	Carbon Steel / Diamond plate	Yes	USA
LS-900-2X3-2.5K	2,500	.5 lb	24" x 36" (2' x 3')	Carbon Steel / Diamond plate	Yes	USA
LS-900-2X3-5K	5,000	1 lb	24" x 36" (2' x 3')	Carbon Steel / Diamond plate	Yes	USA

**LS-900****NTEP USA MADE FLOOR SCALES**

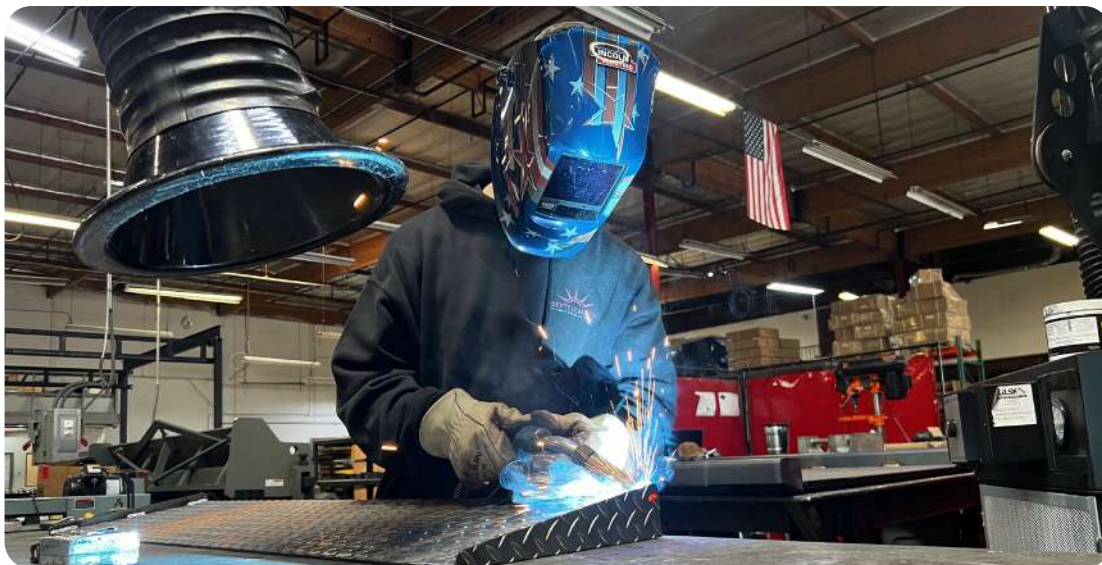
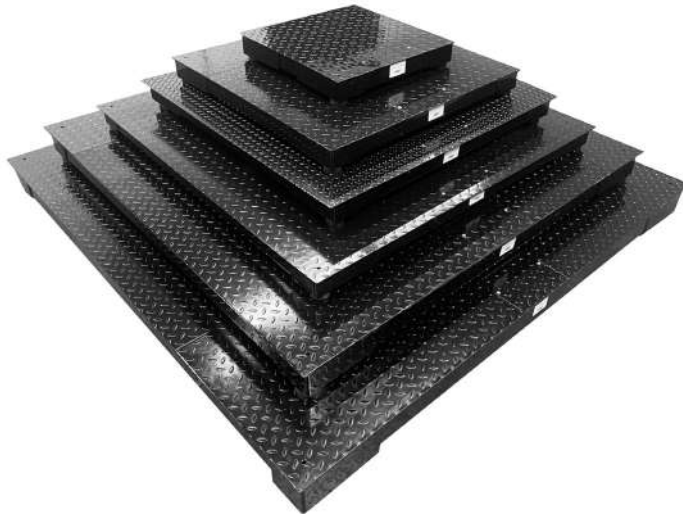
MODELS	CAPACITY in lb	ACCURACY	FLOOR SCALE SIZE	SCALE BASE MATERIAL	NTEP	MANUFACTURED IN
LS-900-3X3-1K	1,000	.2 lb	36" x 36" (3' x 3')	Carbon Steel / Diamond plate	Yes	USA
LS-900-3X3-2.5K	2,500	.5 lb	36" x 36" (3' x 3')	Carbon Steel / Diamond plate	Yes	USA
LS-900-3X3-5K	5,000	1 lb	36" x 36" (3' x 3')	Carbon Steel / Diamond plate	Yes	USA
LS-900-4X4-1K	1,000	.2 lb	48" x 48" (4' x 4')	Carbon Steel / Diamond plate	Yes	USA
LS-900-4X4-2.5K	2,500	.5 lb	48" x 48" (4' x 4')	Carbon Steel / Diamond plate	Yes	USA
LS-900-4X4-5K	5,000	1 lb	48" x 48" (4' x 4')	Carbon Steel / Diamond plate	Yes	USA
LS-900-4X4-10K	10,000	2 lb	48" x 48" (4' x 4')	Carbon Steel / Diamond plate	Yes	USA
LS-900-4X5-1K	1,000	.2 lb	48" x 60" (4' x 5')	Carbon Steel / Diamond plate	Yes	USA
LS-900-4X5-2.5K	2,500	.5 lb	48" x 60" (4' x 5')	Carbon Steel / Diamond plate	Yes	USA
LS-900-4X5-5K	5,000	1 lb	48" x 60" (4' x 5')	Carbon Steel / Diamond plate	Yes	USA
LS-900-4X5-10K	10,000	2 lb	48" x 60" (4' x 5')	Carbon Steel / Diamond plate	Yes	USA
LS-900-4X6-1K	1,000	.2 lb	48" x 72" (4' x 6')	Carbon Steel / Diamond plate	Yes	USA
LS-900-4X6-2.5K	2,500	.5 lb	48" x 72" (4' x 6')	Carbon Steel / Diamond plate	Yes	USA
LS-900-4X6-5K	5,000	1 lb	48" x 72" (4' x 6')	Carbon Steel / Diamond plate	Yes	USA
LS-900-4X6-10K	10,000	2 lb	48" x 72" (4' x 6')	Carbon Steel / Diamond plate	Yes	USA
LS-900-4X8-1K	1,000	.2 lb	48" x 96" (4' x 8')	Carbon Steel / Diamond plate	Yes	USA
LS-900-4X8-2.5K	2,500	.5 lb	48" x 96" (4' x 8')	Carbon Steel / Diamond plate	Yes	USA
LS-900-4X8-5K	5,000	1 lb	48" x 96" (4' x 8')	Carbon Steel / Diamond plate	Yes	USA
LS-900-4X8-10K	10,000	2 lb	48" x 96" (4' x 8')	Carbon Steel / Diamond plate	Yes	USA
LS-900-5X5-1K	1,000	.2 lb	60" x 60" (5' x 5')	Carbon Steel / Diamond plate	Yes	USA
LS-900-5X5-2.5K	2,500	.5 lb	60" x 60" (5' x 5')	Carbon Steel / Diamond plate	Yes	USA
LS-900-5X5-5K	5,000	1 lb	60" x 60" (5' x 5')	Carbon Steel / Diamond plate	Yes	USA
LS-900-5X5-10K	10,000	2 lb	60" x 60" (5' x 5')	Carbon Steel / Diamond plate	Yes	USA
LS-900-5X7-1K	1,000	.2 lb	60" x 84" (5' x 7')	Carbon Steel / Diamond plate	Yes	USA
LS-900-5X7-2.5K	2,500	.5 lb	60" x 84" (5' x 7')	Carbon Steel / Diamond plate	Yes	USA
LS-900-5X7-5K	5,000	1 lb	60" x 84" (5' x 7')	Carbon Steel / Diamond plate	Yes	USA
LS-900-5X7-10K	10,000	2 lb	60" x 84" (5' x 7')	Carbon Steel / Diamond plate	Yes	USA
LS-900-5X8-1K	1,000	.2 lb	60" x 96" (5' x 8')	Carbon Steel / Diamond plate	Yes	USA
LS-900-5X8-2.5K	2,500	.5 lb	60" x 96" (5' x 8')	Carbon Steel / Diamond plate	Yes	USA
LS-900-5X8-5K	5,000	1 lb	60" x 96" (5' x 8')	Carbon Steel / Diamond plate	Yes	USA



LS-900

NTEP USA MADE FLOOR SCALES

MODELS	CAPACITY in lb	ACCURACY	FLOOR SCALE SIZE	SCALE BASE MATERIAL	NTEP	MANUFACTURED IN
LS-900-5X8-10K	10,000	2 lb	60" x 96" (5' x 8')	Carbon Steel / Diamond plate	Yes	USA
LS-900-6X6-1K	1,000	.2 lb	72" x 72" (6' x 6')	Carbon Steel / Diamond plate	Yes	USA
LS-900-6X6-2.5K	2,500	.5 lb	72" x 72" (6' x 6')	Carbon Steel / Diamond plate	Yes	USA
LS-900-6X6-5K	5,000	1 lb	72" x 72" (6' x 6')	Carbon Steel / Diamond plate	Yes	USA
LS-900-6X6-10K	10,000	5 lb	72" x 72" (6' x 6')	Carbon Steel / Diamond plate	Yes	USA
LS-900-7X7-1K	1,000	.2 lb	84" x 84" (7' x 7')	Carbon Steel / Diamond plate	Yes	USA
LS-900-7X7-2.5K	2,500	.5 lb	84" x 84" (7' x 7')	Carbon Steel / Diamond plate	Yes	USA
LS-900-7X7-5K	5,000	1 lb	84" x 84" (7' x 7')	Carbon Steel / Diamond plate	Yes	USA
LS-900-7X7-10K	10,000	2 lb	84" x 84" (7' x 7')	Carbon Steel / Diamond plate	Yes	USA



**LS-917****NTEP (LEGAL FOR TRADE) DRUM SCALE****FEATURES**

- Powder coated steel construction with rugged diamond tread safety plate (standard model)
- 304 stainless steel washdown construction (316 stainless steel available)
- Complete scale and indicator package
- Height adjustable leveling feet
- Features a spacious platform with two way, easy access integrated ramps
- Live rails allows for weighing by placing a pallet across the rails
- Built-in carry handles and wheels (makes it portable and easy to transport the scale)
- Ultra low profile allows easy loading of heavy items
- Drum and barrel weighing, warehouse shipping & receiving, container weighing, pallet & skid weighing, and many other industrial applications
- 20' shielded metal cable included
- Anti-corrosion, baked on powder paint
- Factory pre-calibrated for quick setup
- NTEP COC #: 22-056

SPECIFICATIONS

- Material: Mild Steel / Stainless Steel
- Overloaded Protection: 200%
- Power: AC/DC
- Capacity: 1,000 lbs - 5,000 lbs
- Height: 1.5 in
- Ramp Length: 4 in
- Cable Length: 20 ft
- Warranty: 5 year limited

MODELS	CAPACITY in lb	ACCURACY	PLATFORM SIZE	OVERALL SIZE	INDICATOR
LS-917-27X27-1K	1,000	.2 lb	27" W x 27" L x 1.5" H	35" W x 35" L x 3.5" H	SL-7510-LED or LCD
LS-917-27X27-2K	2,000	.5 lb	27" W x 27" L x 1.5" H	35" W x 35" L x 3.5" H	SL-7510-LED or LCD
LS-917-36X36-1K	1,000	.2 lb	36" W x 36" L x 1.2" H	44" W x 44" L x 3.5" H	SL-7510-LED or LCD
LS-917-36X36-2K	2,000	.5 lb	36" W x 36" L x 1.2" H	44" W x 44" L x 3.5" H	SL-7510-LED or LCD



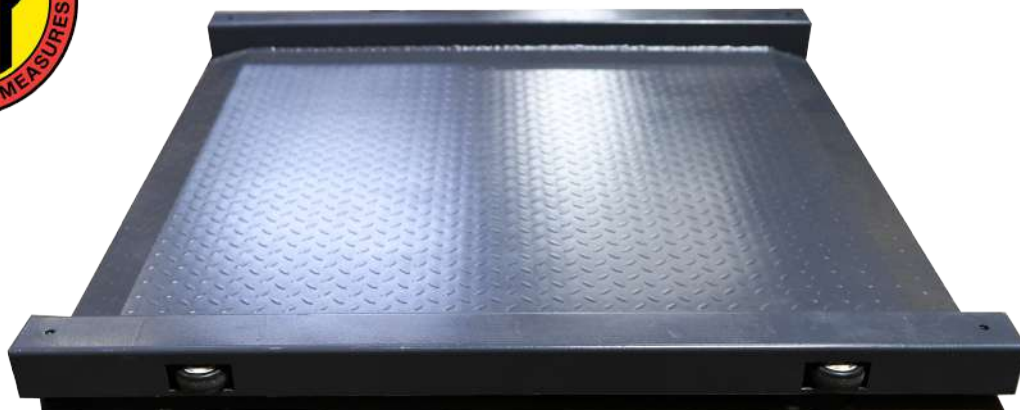
LS-917

NTEP (LEGAL FOR TRADE) DRUM SCALE

MODELS	CAPACITY in lb	ACCURACY	PLATFORM SIZE	OVERALL SIZE	INDICATOR
LS-917-48X48-1K	1,000	.2 lb	48" W x 48" L x 1.2" H	56" W x 56" L x 3.5" H	SL-7510-LED or LCD
LS-917-48X48-2K	2,000	.5 lb	48" W x 48" L x 1.2" H	56" W x 56" L x 3.5" H	SL-7510-LED or LCD
LS-917-48X48-5K	5,000	1 lb	48" W x 48" L x 1.2" H	56" W x 56" L x 3.5" H	SL-7510-LED or LCD

STAINLESS STEEL MODELS

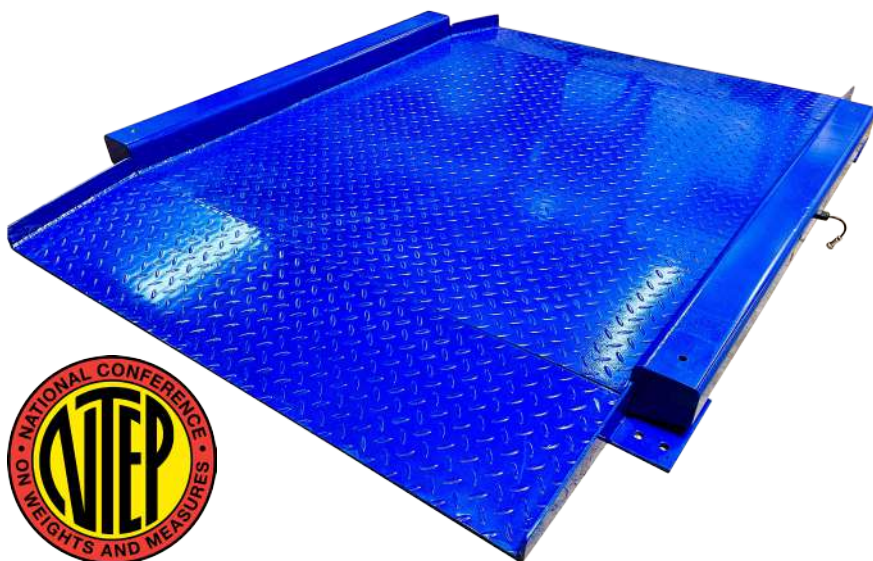
MODELS	CAPACITY in lb	ACCURACY	PLATFORM SIZE	OVERALL SIZE	INDICATOR
LS-917-SS-28X28-1K	1,000	.2 lb	28" W x 28" L x 1.2" H	36" W x 36" L x 3.5" H	SL-7510-LED or LCD
LS-917-SS-28X28-2K	2,000	.5 lb	28" W x 28" L x 1.2" H	36" W x 36" L x 3.5" H	SL-7510-LED or LCD





LS-917-R

LOW PROFILE DRUM SCALE



FEATURES

- ✓ Powder coated steel construction with a rugged diamond safety deck for traction
- ✓ Features a spacious ultra low platform with two way, easy access ramps for easy incline ramping
- ✓ Live rails allows for weighing by placing a pallet across the rails
- ✓ Height adjustable leveling feet
- ✓ The scale fits through standard doors and can go wherever you need it for weighing drums, barrels, industrial containers and small crates
- ✓ Ultra low profile allows easy loading for heavy items
- ✓ Drum and barrel weighing, warehouse shipping & receiving, contain weighing, pallet & skid weighing, and many other industrial applications
- ✓ 20' shielded metal cable included
- ✓ Anti-corrosion, baked-on powder paint
- ✓ Factory pre-calibrated for quick setup
- ✓ NTEP COC #: 22-056

ACCESSORIES

- Indicators
- Data logging software
- Label/Table printer
- Indicator stand
- Scoreboard

SPECIFICATIONS

- Material: Painted Steel
- Overloaded Protection: 200%
- Power: AC/DC
- Capacity: 5,000 lbs
- Height: 1.2 in
- Ramp Length: 12 in
- Cable Length: 20 ft
- Warranty: 5 year limited

MODELS	CAPACITY in lb	ACCURACY	PLATFORM SIZE	OVERALL SIZE	INDICATOR
LS-917-R-30X30-1K	1,000	.2 lb	30" W x 30" L x 1.2" H	38" W x 54" L x 3.5" H	LS-7510-LED or LCD
LS-917-R-30X30-2K	2,000	.5 lb	30" W x 30" L x 1.2" H	38" W x 54" L x 3.5" H	LS-7510-LED or LCD
LS-917-R-36X36-1K	1,000	.2 lb	36" W x 36" L x 1.2" H	44" W x 60" L x 3.5" H	LS-7510-LED or LCD
LS-917-R-36X36-2K	2,000	.5 lb	36" W x 36" L x 1.2" H	44" W x 60" L x 3.5" H	LS-7510-LED or LCD
LS-917-R-48X48-1K	1,000	.2 lb	48" W x 48" L x 1.2" H	56" W x 72" L x 3.5" H	LS-7510-LED or LCD
LS-917-R-48X48-2K	2,000	.5 lb	48" W x 48" L x 1.2" H	56" W x 72" L x 3.5" H	LS-7510-LED or LCD
LS-917-R-48X48-5K	5,000	1 lb	48" W x 48" L x 1.2" H	56" W x 72" L x 3.5" H	LS-7510-LED or LCD



LS-960

LOW PROFILE PANCAKE SCALES



HEAVY-DUTY METAL CABLES with water-proof protective outer coating



Continuous welding
Multiple steel channels



Airport Installation



Ideal for weighing Cargo Loads

FEATURES

- Twin module rugged steel deck construction
- 1.25' long wrap around ramps for easy access and eliminates the need for a scale pit
- Ultra low 3" profile allows easy loading of heavy items
- Powder coat finish
- Complete scale and indicator package
- Indoor or outdoor usage
- Perfect for cargo dolly weighing
- Set up is simple and allows for easy relocation
- Load cell capacity is 2X the scale capacity for a 200% overload protection
- Four NTEP certified alloy steel load cells
- 45' heavy duty metal shielded cable
- Factory pre-calibrated for quick setup

OPTIONAL ACCESSORIES

- Data logging software
- Label/Table printer
- Indicator Upgrade
- Indicator stand
- Scoreboard

SPECIFICATIONS

PART#	LS-960-2057	LS-960-4057	LS-960-201010
CAPACITY	20,000 lb x 2 lb	40,000 lb x 5 lb	20,000 lb x 2 lb
PLATFORM SIZE	5' x 7' x 2.87" H	5' x 7' x 2.87" H	10' x 10' x 2.87" H
RAMP LENGTH	1.25 ft		
OVERALL SIZE	7.5ft x 8.5ft	7.5ft x 8.5ft	12.5ft x 12.5ft
INDICATOR	NTEP LS-7510 (upgrades available)		



LS-Wheelchair-1k

ALUMINUM WHEEL CHAIR DRUM SCALE



FEATURES

- Made from aluminum to be lightweight (91 lb)
- Leveling feet, collapsible stand, wheels and handles to make it as portable and storable as ever
- Easy setup, all you need to do is unfold and plugin
- Built-in lips for easy access onto low profile scale
- Diamond plated for better traction
- Four alloy steel load cells
- Load cell capacity is 2X the scale capacity for overload protection
- Heavy-duty metal shielded quick connecting cable
- Complete scale and indicator package
- Screw-in feet for leveling
- Collapsible stand/handle for easy storing
- Handles and wheels on the sides for easy portability
- Channel construction for superior strength
- The indicator comes with an AC adapter but can be powered with AA batteries for cordless option
- Factory pre-calibrated for quick setup

SPECIFICATIONS

- Material: Aluminum
- Overloaded Protection: 200%
- Indicator: LS-7515-C
- Power: AC/DC, or AA batteries
- Units: lb and kg switchable
- Capacity: 1,000 lbs
- Weight: 91 lbs
- Outer size: (scale shell itself)
47.5" x 47.5" x 4"
- Inner size: (platform wheelchair
will sit in) 39.5" x 39.5"
- Warranty: 5-year limited



**AGRICULTURAL
SCALES**



Heavy Duty Weigh Beam, Bar System

Features

- Heavy duty weighing beam system
- Alloy steel nickel plated anti-corrosion load cells
- SL-7510-SS-C (NTEP) indicator
- Multiple weighing units: (lb/kg/g/oz/lb:oz)

LS-919



Vet Scale

Features

- Large durable stainless steel surface
- 43"(L) x 20"(W) x 2"(H)
- Capacity: 1000 lbs
- Weighing units: lb or kg
- 5-year warranty

LS-922



Livestock & Cattle Alleyway Scale

Features

- Platform dimensions: 85" x 26" x 5"
- Weight: 250 lbs
- 4 - 2500 lb load cells
- Heavy duty to accommodate most animals
- 5-year warranty

LS-929



Cage System Livestock Animal Scale

Features

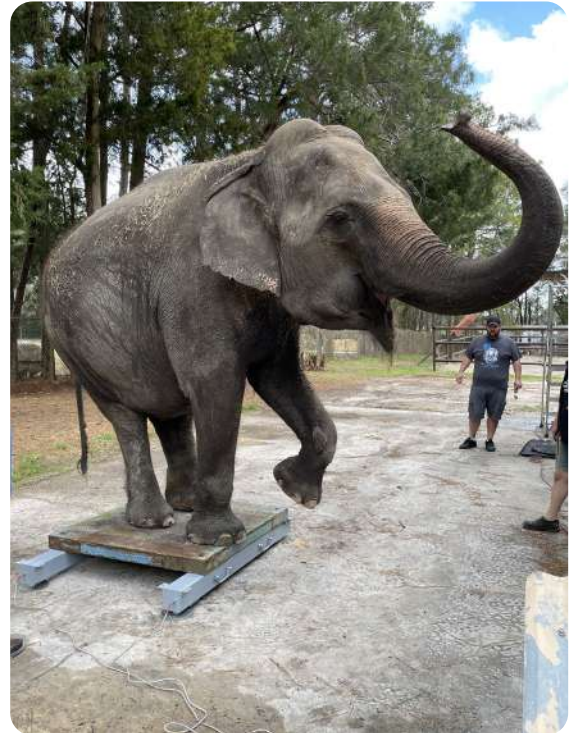
- Great for weighing hogs, sheep, calves, goat, pigs & more
- Comes with swivel casters for easy moving
- Braking feature on two casters
- 5-year warranty

LS-930



LS-919-HD

WEIGH BEAM SYSTEM



FEATURES

- ✓ This portable yet heavy duty weighing beam system is perfect for tight spaces and can easily be stored or put into the back of a truck
- ✓ 100% welded steel all enclosed construction with a powder-coated finish protects from rodents and weather
- ✓ Integrated with carrying handles to make it a portable weighing beam system,
- ✓ Multi-purpose applications
- ✓ The best weighing solution for small cages, chutes & odd objects
- ✓ 20' quick connecting stainless steel mesh shielded cable attaches to our LS-7510-SS stainless steel indicator NTEP approved
- ✓ Alloy steel nickel plated anti-corrosion load cells offer 200% overload protection Order includes 2 weigh bars, an indicator, and 4 stainless steel leveling feet
- ✓ Includes indicator with lb/kg selectable, rechargeable battery, and auto-hold
- ✓ Easy installation Sold as a set Factory Calibrated
- ✓ Overload Protection
- ✓ 5-year warranty on parts Indicator Features:
- ✓ Large 1' Backlit LED or LCD display LS-7510-SS-C (NTEP) indicator
- ✓ Rechargeable battery (up to 100 hrs) Stainless steel casing, AC adapter included
- ✓ Multiple weighing units: (lb/kg/g/oz/lb:oz) Gross/Tare/Pre-Set Tare/Zero
- ✓ Multiple Hold functions Count weighing Accumulation weighing Overload / Underload alarm
- ✓ Splash-proof keyboard and display Connects to a remote display and printer



LS-919-HD

WEIGH BEAM SYSTEM



MODELS	CAPACITY in lb	ACCURACY	BEAM SIZE	HEIGHT	MATERIAL	SHIP WT.
LS-919-HD-24-5K	5,000	1 lb	24" (L) x 4" (W)	3.7"	Carbon Steel	65 lbs
LS-919-HD-36-5K	5,000	1 lb	36" (L) x 4" (W)	3.7"	Carbon Steel	75 lbs
LS-919-HD-40-5K	5,000	1 lb	40" (L) x 4" (W)	3.7"	Carbon Steel	85 lbs
LS-919-HD-48-5K	5,000	1 lb	48" (L) x 5" (W)	4"	Carbon Steel	95 lbs
LS-919-HD-48-10K	10,000	2 lb	48" (L) x 5" (W)	4"	Carbon Steel	110 lbs
LS-919-HD-60-20K	20,000	2 lb	60" (L) x 5" (W)	4"	Carbon Steel	145 lbs



LS-920

PORTABLE LIVESTOCK ANIMAL SCALE



FEATURES

- ✓ Portable with carrying handles and wheels
- ✓ Thread plated surface
- ✓ Ramped ends
- ✓ Adjustable feet
- ✓ Indicator with large LCD display and rechargeable battery
- ✓ 18" long sturdy metal shielded cable
- ✓ Cage option available
- ✓ Weatherproof option available
- ✓ Factory Calibrated
- ✓ 5-year warranty on parts

SPECIFICATIONS

Capacity: 2000 lbs
 Accuracy: .5 lb
 Platform: 50" x 20" / 1300 x 500 (mm)
 Indicator: LS-7515-C
 Material: Painted Steel
 Overload Protection: 200%

OPTIONAL ACCESSORIES

Printer
 Scoreboard
 Indicator stand
 Software

**LS-922****STAINLESS STEEL VET SCALE****FEATURES**

- ✓ Large durable stainless steel surface
- ✓ Low 2" profile platform lets animals easily step on and off
- ✓ A good alternative for weighing large boxes or crates
- ✓ Lightweight and portable; can be used on the floor or tabletop
- ✓ Anti-skid rubber mat included preventing animals from slipping
- ✓ Load cell capacity is 2.2 times scale capacity for overload protection
- ✓ Includes LED indicator with an adjustable wall or desk mount stand
- ✓ Weighing units: lb or kg
- ✓ Built-in RS232 communication port
- ✓ Wireless option available
- ✓ Accuracy: .2 lb
- ✓ 5 year warranty

SPECIFICATIONS

- ✓ **Material:** Stainless Steel
- ✓ **Platform Dimensions:** 43"(L) x 20"(W) x 2"(H)
- ✓ **Overload Protection:** 200%
- ✓ **Indicator:** LS-7515-C
- ✓ **Power:** AC/DC adapter
- ✓ **Capacity:** 1000 lb x 0.2 lb / 500 kg
- ✓ **Cable Length:** 19' ft

OPTIONS / ACCESSORIES

- ✓ Printer
- ✓ Indicator Stand



LS-929

ALLEYWAY SCALE



FEATURES

- ✓ Overall dimensions: 90.5" x 26.3/4" x 5"
- ✓ Shipment Weight: 310 lbs
- ✓ Large platform to make a complete livestock alleyway.
- ✓ Thread plate surface
- ✓ Motion sensing technology for accurate animal weighing
- ✓ Metal Shielded Cable
- ✓ 4 – 2500 lb load cells with leveling feet for easy use.
- ✓ Heavy duty to accommodate most animals
- ✓ Built-in 4" ramps and 1 3/4" high side rails
- ✓ NEMA 4 Washdown, stainless steel, legal for trade
- ✓ NEMA 4 stainless steel junction box
- ✓ Warranty: 5 years

SPECIFICATIONS

- ✓ **Material:** Painted Steel
- ✓ **Platform Dimensions:** 85" x 26" x 5"
- ✓ **Overload Protection:** 200%
- ✓ **Indicator:** LS-7510-C
- ✓ **Power:** AC/DC, built-in rechargeable battery (100 hrs)
- ✓ **Capacity:** 5000 lbs x 1 lb / 2500 kg
- ✓ **Cable Length:** 20' ft

OPTIONS / ACCESSORIES

- ✓ Printer
- ✓ Indicator Stand
- ✓ Scoreboard
- ✓ Software

**LS-930****PORTABLE LIVESTOCK ANIMAL WEIGHING SCALE****FEATURES**

- Great for weighing hogs, sheep, small cattle or ponies
- Comes with swivel casters for easy moving
- NEMA 4 stainless steel junction box
- Motion sensing technology for accurate animal weighing
- Side rails help contain animals from leaving scale while weighing
- Weatherproof option available
- Indicator: LS-7510-SS-C

OPTIONAL ACCESSORIES

- Indicator Enclosure
- Printer
- Scoreboard
- Display stand
- Software

MODELS	CAPACITY in lb	ACCURACY	PLATFORM SIZE	SCALE BASE MATERIAL	NTEP	INDICATOR
LS-930-5'X30"	2,000	.5 lb	5' x 30" (60" x 30")	Carbon Steel	No	LS-7510-SS-C
LS-930-5'X7'	5,000	1 lb	7' x 5' (84" x 60")	Carbon Steel	No	LS-7510-SS-C
LS-930-10'X7'	10,000	1 lb	10' x 7' (120" x 84")	Carbon Steel	No	LS-7510-SS-C



LS-WB

MULTI-PURPOSE WEIGH BEAM SYSTEM

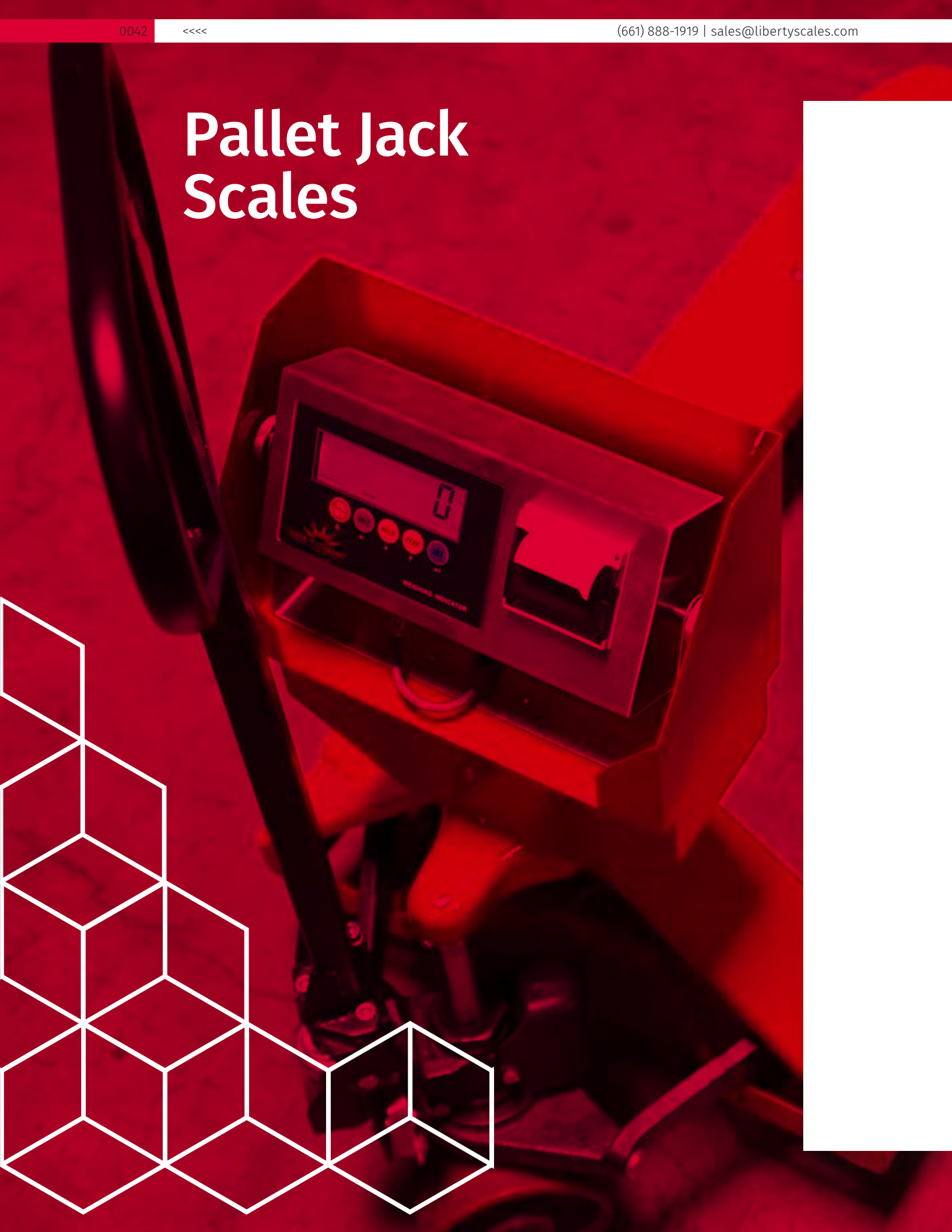


FEATURES

- ✓ Portable, heavy-duty carbon steel weighing beam system
- ✓ Use for applications like cages for animals, silos, milk tanks, small platforms and storage containers
- ✓ Includes indicator with lb/kg selectable, rechargeable battery, and auto-hold
- ✓ NTEP 6 digits, 1" display with steel housing
- ✓ Built-in RS-232 communication port
- ✓ Integrated wheels and handles
- ✓ Easy installation
- ✓ Sold as a set
- ✓ Factory Calibrated
- ✓ Overload Protection
- ✓ 5-year warranty on parts

MODELS	CAPACITY in lb	ACCURACY	BEAM SIZE	HEIGHT	MATERIAL	SHIP WT.
LS-WB-24-5K	5,000	1 lb	24" (L) x 4" (W)	3.7"	Carbon Steel	65 lbs
LS-WB-36-5K	5,000	1 lb	36" (L) x 4" (W)	3.7"	Carbon Steel	75 lbs
LS-WB-40-5K	5,000	1 lb	40" (L) x 4" (W)	3.7"	Carbon Steel	85 lbs
LS-WB-48-5K	5,000	1 lb	48" (L) x 4" (W)	3.7"	Carbon Steel	95 lbs
LS-WB-48-10K	10,000	2 lb	48" (L) x 5" (W)	4"	Carbon Steel	110 lbs
LS-WB-60-20K	20,000	2 lb	60" (L) x 5" (W)	4"	Carbon Steel	145 lbs

Pallet Jack Scales





Features

- Min height: 3"
- Highest Height: 7.5"
- Overall size: 63" x 21" x 47"
- Indicator: LS-7516-B
- 5-year warranty

LS-5000-E-Narrow



Features

- Low profile
- Min height: 3.25"
- Pallet jack size: 50" x 27"x 48"
- Indicator: LS-7512-SS-P
- 5-year warranty

LS-5000-PJP



Features

- Stainless steel
- Min height: 3.25"
- Pallet jack size: 50" x 27"x 48"
- Indicator: LS-7512-SS-P
- 5-year warranty

LS-3300-SS-PJP



LS-5000-E

INDUSTRIAL PALLET JACK SCALE



FEATURES

- Heavy-duty industrial design
- 5000 lb capacity in 1lb increments
- Low profile and tapered forks
- 4 alloy steel shear beam load cells
- Stainless steel NEMA 4X junction box with signal trim summing board
- Rubber-rimmed wheels
- 5-year limited warranty

SPECIFICATIONS

Min height: 3.25"
 Pallet jack size:
 50" x 27" x 48.5"
 Indicator: LS-7516-C



LS-5000-E-Narrow PALLET JACK SCALE



FEATURES

- Heavy-duty industrial design
- 5000 lb capacity in 1lb increments
- Low profile and tapered forks
- 4 alloy steel shear beam load cells
- Stainless steel NEMA 4X junction box with signal trim summing board
- Rubber-rimmed wheels
- 5-year limited warranty

SPECIFICATIONS

- Min height: 3"
- Highest Height: 7.5"
- Pallet jack Overall size:
63" x 21" x 47"
- Pallet jack fork size:
45.5" x 21" x 2.25"
- Indicator: LS-7516-C



LS-5000-PJP

PALLET JACK SCALE WITH BUILT-IN PRINTER



FEATURES

- Heavy-duty industrial design
- 5000 lb capacity in 1lb increments
- Low profile
- 4 alloy steel shear beam load cells
- Stainless steel NEMA 4X junction box with signal trim summing board
- Rubber-rimmed wheels
- Package configured and calibrated as 5000 x 1lb
- 5-year limited warranty

SPECIFICATIONS

Min height: 3.25"
 Pallet jack size:
 50" x 27" x 48"
 Indicator: LS-7512-SS-P
 (Stainless Steel with Built-in printer)



LS-3300-SS-PJP

STAINLESS STEEL PALLET JACK SCALE WITH BUILT-IN PRINTER



FEATURES

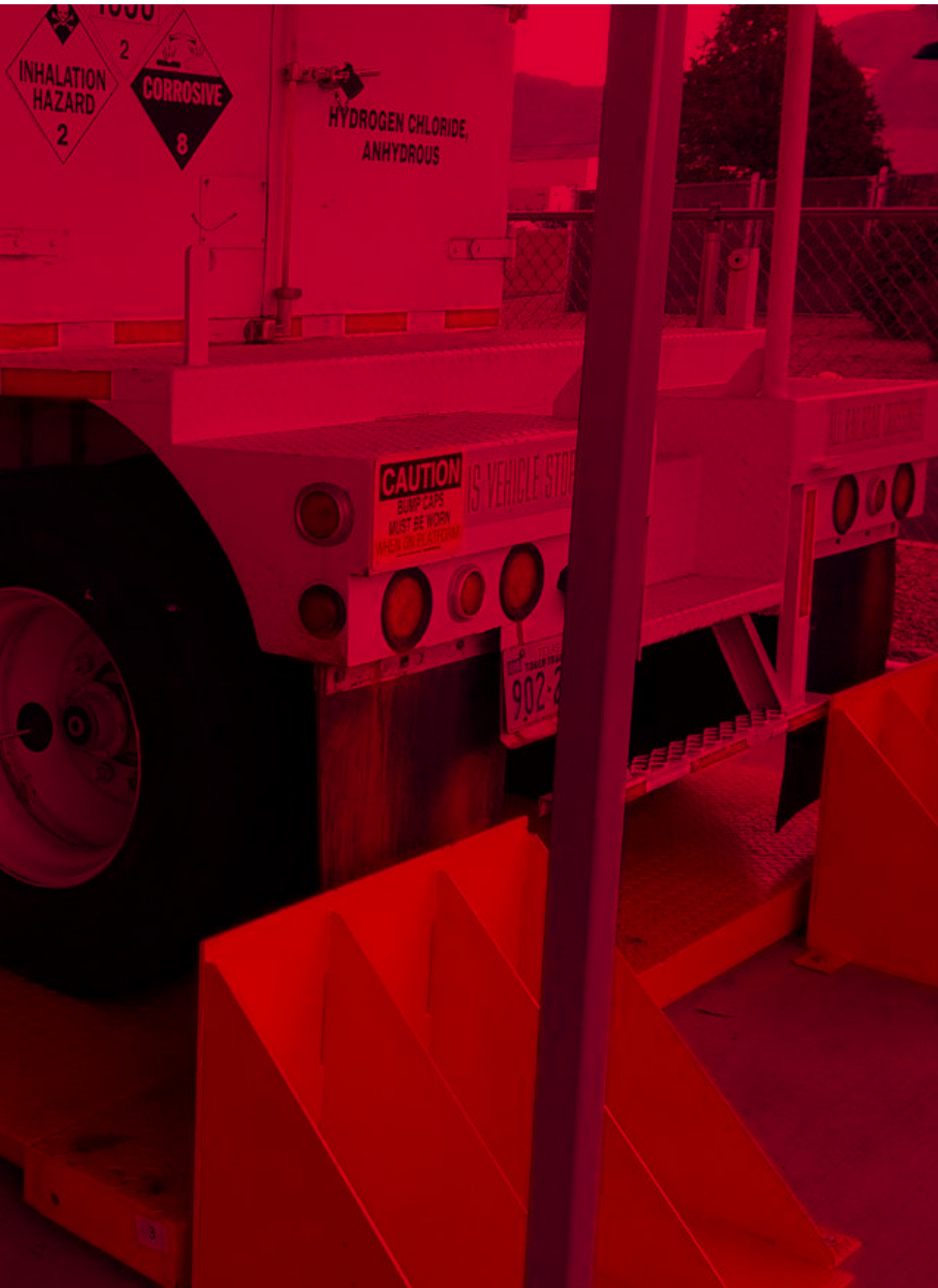
- Medium-duty industrial design
- 3300 lb capacity in 1lb increments
- Low profile
- 4 alloy steel shear beam load cells
- Stainless steel NEMA 4X junction box with signal trim summing board
- Rubber-rimmed wheels
- Package configured and calibrated as 5000 x 1lb
- 5-year limited warranty

SPECIFICATIONS

Min height: 3.25"
 Pallet jack size:
 50" x 27" x 48"
 Indicator: LS-7512-SS-P
 (Stainless Steel with Built-in printer)



Axle Scales & Weighing Pads



We offer a range of portable vehicle scales, perfect for weighing anything from two-wheelers to cars and all the way to heavy vehicles. These weighing scales are also excellent for verification applications and are used to weigh wheels, axles, or entire vehicles accurately.



LS-928

WEIGH PADS SERIES



LS-928-2416



LS-928-2817



LS-928-3620



LS-7561

FEATURES

- ✓ Portable, low profile and heavy duty construction
- ✓ Made from light yet durable aircraft aluminum
- ✓ Easily weighs large vehicles such as trucks, vans, tankers, boats, planes and trailers
- ✓ 200% overload protection
- ✓ Interlocking skid resistance ramps
- ✓ 33' long shielded metal cables
- ✓ Each pad has an integrated handle and two wheels for easy portability and storage
- ✓ Easy to use; driver can operate and weigh single-handedly
- ✓ Larger options/higher capacities available
- ✓ 5 year warranty on the platform & electronics

INDICATOR FEATURES

- ✓ Built-in thermal printer, prints the weight of each axle as well as the accumulated total with the time and date
- ✓ Indicator has a built in rechargeable battery that last more than 100 hours
- ✓ Includes waterproof indicator carrying case for protection and portability
- ✓ Kg and lb weighing units



LS-928

WEIGH PADS SERIES

OPTIONS / ACCESSORIES

- ✓ Storage / Carrying Cart
- ✓ Remote Display (Scoreboards)
- ✓ Wireless / cordless upgrades available

MODELS	NO. OF PADS	CAPACITY & ACCURACY	ERROR RATE	OVERALL CAPACITY	SIZE (WEIGHING SURFACE)	EACH PAD WEIGHT
LS-928-2416 SERIES						
LS-928-2416-2	2	25,000 lb x 10 lb	±0.05%	50,000 lb	24" W x 16" L x 2" H	40
LS-928-2416-4	4	25,000 lb x 10 lb	±0.05%	100,000 lb	24" W x 16" L x 2" H	40
LS-928-2416-6	6	25,000 lb x 10 lb	±0.05%	150,000 lb	24" W x 16" L x 2" H	40
LS-928-2817 SERIES						
LS-928-2817-2	2	25,000 lb x 10 lb	±0.1	50,000 lb	28" W x 17" L x 2" H	75
LS-928-2817-4	4	25,000 lb x 10 lb	±0.1	100,000 lb	28" W x 17" L x 4" H	75
LS-928-2817-6	6	25,000 lb x 10 lb	±0.1	150,000 lb	28" W x 17" L x 6" H	75
LS-928-3620 SERIES						
LS-928-3620-2	2	40,000 lb x 20 lb	±0.1	80,000 lb	36" W x 20" L x 2" H	90
LS-928-3620-4	4	40,000 lb x 20 lb	±0.1	160,000 lb	36" W x 20" L x 2" H	90
LS-928-3620-6	6	40,000 lb x 20 lb	±0.1	240,000 lb	36" W x 20" L x 2" H	90
LS-928-2416-W SERIES						
LS-928-2416-2-W	2	25,000 lb x 10 lb	±0.05%	50,000 lb	24" W x 16" L x 2" H	40
LS-928-2416-4-W	4	25,000 lb x 10 lb	±0.05%	100,000 lb	24" W x 16" L x 2" H	40
LS-928-2416-6-W	6	25,000 lb x 10 lb	±0.05%	150,000 lb	24" W x 16" L x 2" H	40
LS-928-2817-W SERIES						
LS-928-2817-2-W	2	25,000 lb x 10 lb	±0.1	50,000 lb	28" W x 17" L x 2" H	75
LS-928-2817-4-W	4	25,000 lb x 10 lb	±0.1	100,000 lb	28" W x 17" L x 4" H	75
LS-928-2817-6-W	6	25,000 lb x 10 lb	±0.1	150,000 lb	28" W x 17" L x 6" H	75
LS-928-3620-W SERIES						
LS-928-3620-2-W	2	40,000 lb x 20 lb	±0.1	80,000 lb	36" W x 20" L x 2" H	90
LS-928-3620-4-W	4	40,000 lb x 20 lb	±0.1	160,000 lb	36" W x 20" L x 2" H	90
LS-928-3620-6-W	6	40,000 lb x 20 lb	±0.1	240,000 lb	36" W x 20" L x 2" H	90



LS-60KX | LS 80KX

HEAVY DUTY TRUCK AXLE SCALES



FEATURES

- 2 Heavy-duty weigh-bridges + 4 matching ramps
- Equipped with LS-7561-C (Brief case indicator with built-in printer)
- 8 Stainless steel large envelope 15,000 lb shear beam load cells (200% overload protected)
- NEMA x4 Stainless steel junction box (X 2)
- 8 Adjustable swivel steel Feet
- 5-Year warranty!

OPTIONAL ACCESSORIES

- Optional LS-7561-C-W (wireless indicator system + 2 transmitters)
- Scoreboard (Large Display)
- Explosion proof upgrade

SIZE	CAPACITY
(7') 84"(L) X 36" (W) X 6" (H)	60,000 lbs x 10 lb
(12') 144"(L) X 36" (W) X 6" (H)	80,000 lbs x 10 lb



LS-934

CARGO TRUCK SCALE



FEATURES

- ✓ Extra large weighing surface
- ✓ Modular design can allow you the flexibility to add additional panels
- ✓ Low 6" profile and long ramps make it easy to drive on and off
- ✓ Steel diamond tread deck construction for tire grip
- ✓ Four premium watertight alloy steel load cells that have a 2.2X overload protection
- ✓ Set up is simple and allows for easy relocation
- ✓ Can be installed above ground with ramps or in-ground as a pit scale
- ✓ Indoor or outdoor usage
- ✓ Perfect for container weighing
- ✓ Durable baked on powder coat finish
- ✓ Heavy Duty Steel (Aluminum plates available)
- ✓ 5-year warranty

OPTIONS / ACCESSORIES

- ✓ Stoppers
- ✓ Data logging software
- ✓ Label/Table printer
- ✓ Indicator Stand
- ✓ Scoreboard

MODEL	CAPACITY	PLATFORM	RAMPS	OVERALL DIMENSIONS
LS-934-1010-60K	60,000 lb x 10 lb	10' x 10'	10' x 40"	118" W x 198" L x 5.75" H
LS-934-1015-60K	60,000 lb x 10 lb	10' x 15'	10' x 40"	118" W x 258" L x 5.75" H
LS-934-1020-120K	120,000 lb x 10 lb	10' x 20'	10' x 40"	118" W x 316" L x 5.75" H
LS-934-1025-150K	150,000 lb x 10 lb	10' x 25'	10' x 40"	118" W x 380" L x 5.75" H
LS-934-1030-150K	150,000 lb x 10 lb	10' x 30'	10' x 40"	434" L x 118" W x 5.75" H





CRANE SCALES



General Purpose Crane Scale

Features

- Medium general purpose crane scale
- Weighing units: kg/lb
- Rechargeable battery pack (up to 80hrs)
- Wireless remote control with Hold function
- 5-year warranty

LS-924



Heavy Duty Industrial Crane Scale

Features

- Heavy Duty Industrial Crane Scale
- Weighing units: kg/lb
- Octagonal shape for capacities 3k - 20k
- Rectangular shape for capacity 40k
- 5-year warranty

LS-925



Heavy Duty Industrial Tension Link Scale

Features

- Capacity: 25,000 lbs to 250,000 lbs
- 26' load cell cable (longer options available)
- Power: 110V-220V AC adapter
- Selectable weighing units: lb and kg
- 5-year warranty

LS-927



Wireless Crane Scale

Features

- Completely wireless
- Transmission distance: 300ft
- Easy-grip handheld controller/indicator
- Scale power: rechargeable battery
- 5-year warranty

LS-W-CR



LS-924

MEDIUM DUTY GENERAL PURPOSE CRANE SCALE



FEATURES

- Economical, lightweight, and handheld general purpose crane scale
- Features an easy to read, backlit LED or LCD display
- Measured values in either pounds (lb) or kilograms (kg)
- Powered using a rechargeable battery pack (up to 80hrs)
- The standard remote controller allows users to change units, clear measurements, zero and tare out weight
- The remote controller can capture peak weight at a distance of up to 100 feet (30m)
- Wireless remote control with Hold function
- 5 years warranty

LED DISPLAY

MODELS	CAPACITY
LS-924A-500	500 lb x .1 lb
LS-924A-1K	1000 lb x .2 lb
LS-924A-1.5K	1500 lb x .5 lb
LS-924A-2K	2000 lb x .5 lb
LS-924A-3K	3000 lb x .5 lb

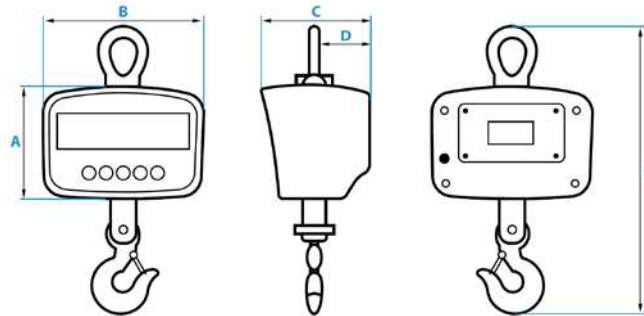
LCD DISPLAY

MODELS	CAPACITY
LS-924B-500	500 lb x .1 lb
LS-924B-1K	1000 lb x .2 lb
LS-924B-1.5K	1500 lb x .5 lb
LS-924B-2K	2000 lb x .5 lb
LS-924B-3K	3000 lb x .5 lb

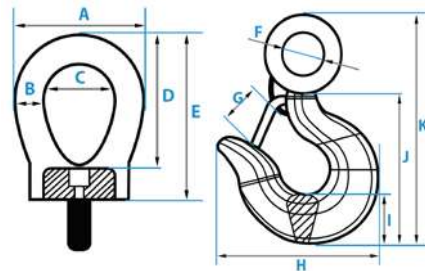


LS-924

MEDIUM DUTY GENERAL PURPOSE CRANE SCALE



EXTERIOR DIMENSIONS				
A	B	C	D	E
5.88"	8.50"	5.75"	2.91"	15.16"-17.13"



HOOK DIMENSIONS										
A	B	C	D	E	F	G	H	I	J	K
UP TO 2,000 LBS.										
2.55"	0.60"	1.35"	2.65"	3.25"	0.90"	0.90"	2.92"	0.96"	3.15"	4.92"
OVER 2,000 LBS.										
2.55"	0.60"	1.35"	2.65"	3.25"	1.22"	1.15"	3.57"	1.25"	3.90"	6.50"

**LS-925****HEAVY DUTY INDUSTRIAL CRANE SCALE****FEATURES**

- Durable cast aluminum housing, ideal for harsh environments and all your overhead weighing needs
- Features an easy to read, backlit LED or LCD display
- Measured values in either pounds (lb) or kilograms (kg)
- Powered using a rechargeable battery pack (up to 80hrs)
- The wireless remote control allows users to change units, clear measurements, zero and tare out weight
- The remote control can capture peak weight at a distance of up to 100 feet (30m)
- Octagonal shape for capacities 3k - 20k
- Rectangular shape for capacity 40k
- 5-years warranty

LED DISPLAY

MODELS	CAPACITY
LS-925A-3K	3000 lb x .5 lb
LS-925A-6K	6000 lb x .5 lb
LS-925A-10K	10000 lb x .5 lb
LS-925A-20K	20000 lb x .5 lb
LS-925A-40K	40000 lb x .5 lb

LCD DISPLAY

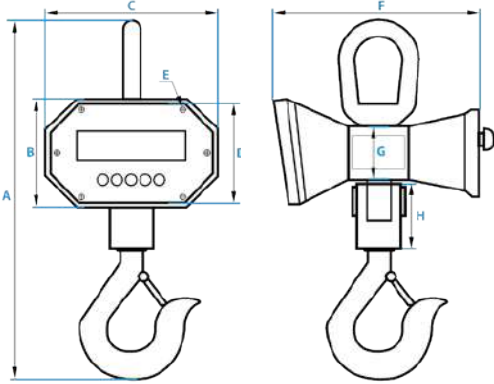
MODELS	CAPACITY
LS-925B-3K	3000 lb x .5 lb
LS-925B-6K	6000 lb x .5 lb
LS-925B-10K	10000 lb x .5 lb
LS-925B-20K	20000 lb x .5 lb
LS-925B-40K	40000 lb x .5 lb



LS-925

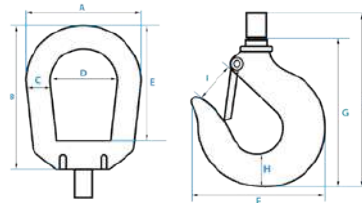
HEAVY DUTY INDUSTRIAL CRANE SCALE

6K, 10K, 20K ▼

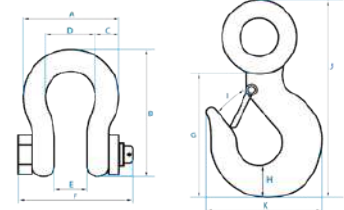


EXTERIOR DIMS. 6K, 10K, 20K			
A	B	C	D
18"; 26"; 29"	6.14"	9.83"	5.65"
E	F	G	H
0.28"	11.2"	2.97"	3.5";6.5";8.5"

Up to 10K lbs ▼

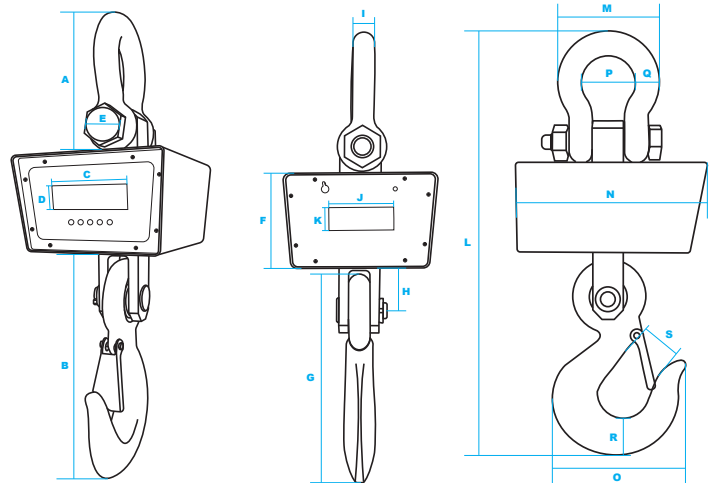


20K lbs ▼

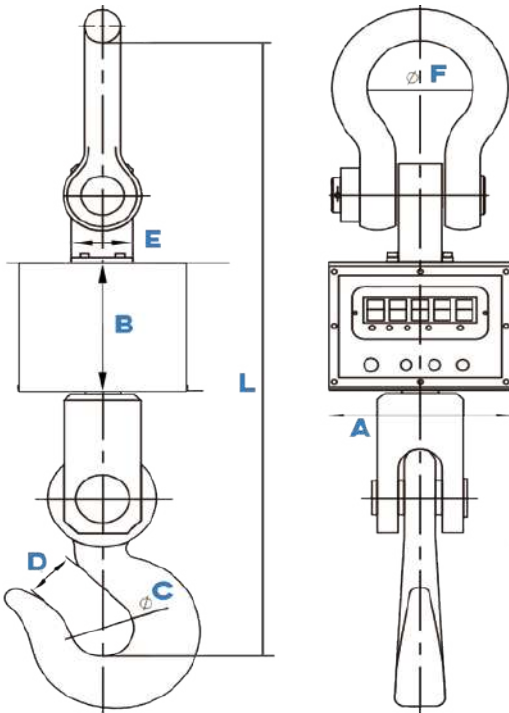


HOOK DIMENSIONS						
CAPACITY	A	B	C	D	E	F
6,000 lbs	4.52"	5.91"	0.95"	3.58"	4.72"	4.54"
10,000 lbs	5.40"	7"	1.25"	2.95"	1.92"	6.50"
20,000 lbs	6"	8"	1.40"	3.21"	2.21"	7.25"
CAPACITY	G	H	I	J	K	
6,000 lbs	5.36"	1.45"	1.45"	6.06"	•	
10,000 lbs	6.40"	1.91"	1.65"	9.50"	6"	
20,000 lbs	8.00"	2.40"	2.00"	12.20"	7.00"	

40,000 lbs ▼



60K-100K lbs ▼



40K LB CAPACITY DIMENSIONS									
A	B	C	D	E	F	G	H	I	J
5.5"	20"	6"	1.2"	2.9"	7.5"	17"	4.5"	1.95"	5"
K	L	M	N	O	P	Q	R	S	•
1.6"	40"	9.25"	15.75"	13.25"	5"	2.25"	4"	3.4"	•

60K-100K lbs ▼

60K-100K LB CAPACITY DIMENSIONS							
CAPACITY	A	B	C	D	E	F	L
60,000 lbs	9.29"	6.25"	5.11"	4.72"	8.34"	5.90"	39.05"
80,000 lbs	11.81"	8.46"	5.90"	5.11"	11.81"	8.42"	47.75"
100,000 lbs	11.81"	8.46"	5.90"	5.11"	11.81"	8.42"	47.75"

**LS-927****HEAVY DUTY INDUSTRIAL TENSION LINK SCALE****FEATURES**

- Designed to measure high capacity load for cranes, hoists, and winches
- Used with shackles to measure force
- Available in capacities ranging from 10,000 lbs to 250,000 lbs
- The display shows both kg and lb measurements
- Cost-effective solution for processing, monitoring, and controlling overhead loads
- Lightweight and compact design with high capacity
- Used with shackles to measure force
- Selectable weighing units: lb and kg
- Power: 110V-220V AC adapter, built-in rechargeable battery (up to 100 hrs)
- 26' load cell cable (longer options available)
- 5-year limited warranty

MODELS	CAPACITY
LS-927-10K	10,000 lb x 1 lb
LS-927-25K	25,000 lb x 10 lb
LS-927-50K	50,000 lb x 20 lb
LS-927-100K	100,000 lb x 50 lb
LS-927-200K	200,000 lb x 100 lb
LS-927-250K	250,000 lb x 100 lb

OPTIONAL ACCESSORIES

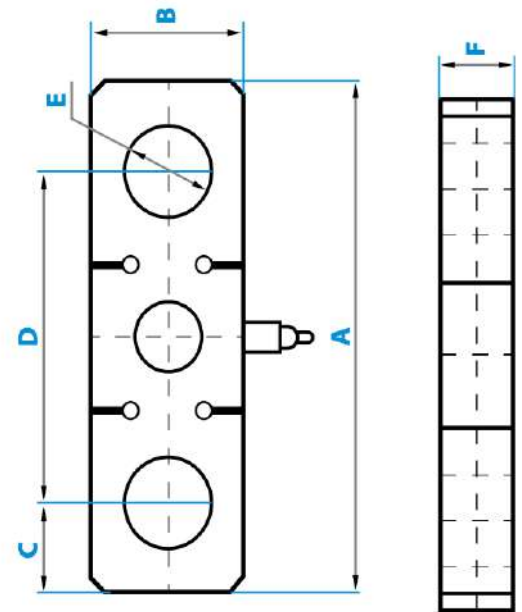
- Thermal printers
- Scoreboard (Large display)
- Data collection software
- Explosion proof upgrade
- Water-resistant upgrades
- Output systems (4-20ma or 0-5VRelay)
- Wireless (cordless connection)



LS-927

HEAVY DUTY INDUSTRIAL TENSION LINK SCALE

RATED CAPACITY	DIMENSIONS					
	A	B	C	D	E	F
lb/inches						
10k lb	11.125	3.55	1.875	7.25	2.015	1.5
25k lb	11.125	3.55	1.875	7.25	2.015	1.5
50k lb	12.2	4.33	2.01	8.27	2.13	1.69
100k lb	16.5	5.0625	2.375	11.875	2.84	1.97
200k lb	23.625	7.09	3.875	15.75	4.6	3.15
250k lb	23.625	7.09	3.875	15.75	4.6	3.15
kg/mm						
4535.92 kg	282.575	90.17	47.625	184.15	51.181	38.1
11339.8 kg	282.575	90.17	47.625	184.15	51.181	38.1
22679.6 kg	309.88	109.982	51.054	210.058	54.102	42.926
45359.2 kg	419.1	128.5875	60.325	301.625	72.136	50.038
90718.4 kg	600.075	180.086	98.425	400.05	116.84	80.01
113398 kg	600.075	180.086	98.425	400.05	116.84	80.01





LS-927-W

HEAVY DUTY WIRELESS TENSION LINK



FEATURES

- Designed to measure high capacity load for cranes, hoists, and winches
- Cost-effective solution for processing, monitoring, and controlling overhead loads
- Alloy Steel constructed load cell
- Used with shackles to measure force
- 300 feet wireless range
- 26' load cell cable (longer options available)
- 5-Year Warranty

OPTIONAL ACCESSORIES

Thermal printers
 Scoreboard (Large display)
 Data collection software
 Explosion proof upgrade
 Water-resistant upgrades
 Output systems (4-20ma or 0-5VRelay)

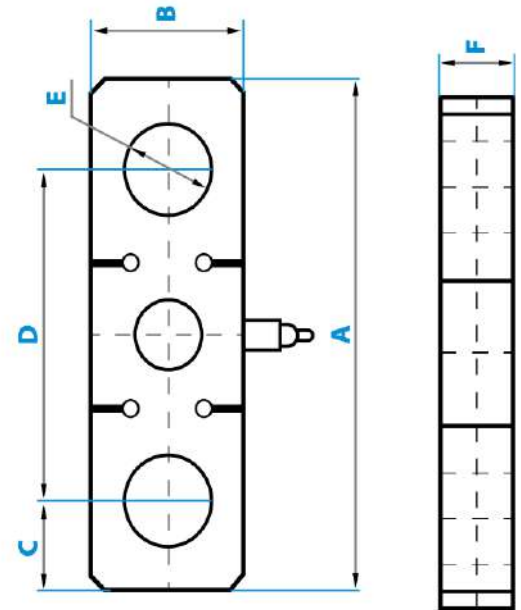
MODELS	CAPACITY
LS-927-W-10K	10,000 lb x 1 lb
LS-927-W-25K	25,000 lb x 10 lb
LS-927-W-50K	50,000 lb x 20 lb
LS-927-W-100K	100,000 lb x 50 lb
LS-927-W-200K	200,000 lb x 100 lb
LS-927-W-250K	250,000 lb x 100lb



LS-927-W

HEAVY DUTY WIRELESS TENSION LINK

RATED CAPACITY	DIMENSIONS					
	A	B	C	D	E	F
lb/inches						
10k lb	11.125	3.55	1.875	7.25	2.015	1.5
25k lb	11.125	3.55	1.875	7.25	2.015	1.5
50k lb	12.2	4.33	2.01	8.27	2.13	1.69
100k lb	16.5	5.0625	2.375	11.875	2.84	1.97
200k lb	23.625	7.09	3.875	15.75	4.6	3.15
250k lb	23.625	7.09	3.875	15.75	4.6	3.15
kg/mm						
4535.92 kg	282.575	90.17	47.625	184.15	51.181	38.1
11339.8 kg	282.575	90.17	47.625	184.15	51.181	38.1
22679.6 kg	309.88	109.982	51.054	210.058	54.102	42.926
45359.2 kg	419.1	128.5875	60.325	301.625	72.136	50.038
90718.4 kg	600.075	180.086	98.425	400.05	116.84	80.01
113398 kg	600.075	180.086	98.425	400.05	116.84	80.01





LS-926

(S-TYPE) LOAD CELL , HANGING SCALE



MODELS	CAPACITY
LS-926-100	100 lb x 0.01 lb
LS-926-250	250 lb x 0.02 lb
LS-926-500	500 lb x 0.05 lb
LS-926-1K	1,000 lb x 0.1 lb
LS-926-2K	2,000 lb x 0.2 lb
LS-926-3K	3,000 lb x 0.5 lb
LS-926-5K	5,000 lb x 0.5 lb
LS-926-10K	10,000 lb x 1 lb
LS-926-20K	20,000 lb x 2 lb

FEATURES

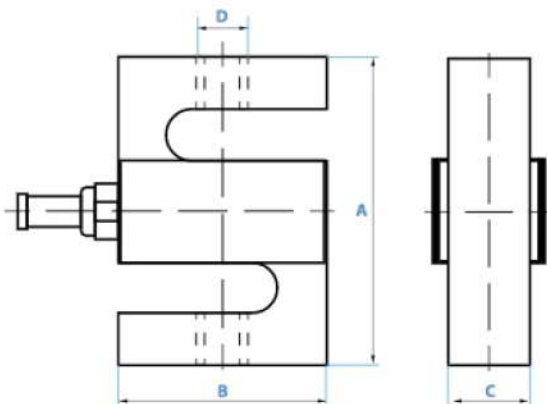
- General weighing for many applications
- Selectable weighing units: lb, kg
- Includes LS-7516 LED or LCD indicator with rechargeable battery
- Standard indicator functions include Tare, Print, and Peak Hold
- 19' load cell cable (longer cables available)
- Eyebolts included
- Indicator upgrade to NEMA 4 stainless steel for washdown applications
- RS232 port for printer or computer

OPTIONAL ACCESSORIES

- Indicator Upgrade
- Waterproof hard case
- Scoreboard
- Indicator stand
- Software

DIMENSIONS

100 lbs to 20,000 lbs



RATED CAPACITY	DIMENSIONS			
	A	B	C	D
LB/INCHES				
100 - 200 lbs	2.50	2.00	0.50	1/4-28UNF-2B
250 - 300 lbs	2.50	2.00	0.50	3/8-24UNF-2B
500 - 1,000 lbs	2.50	2.00	0.75	1/2-20UNF-2B
2K - 3K lbs	3.00	2.00	1.00	1/2-20UNF-2B
5K - 10K lbs	4.25	3.00	1.00	3/4-16UNF-2B
15K lbs	5.50	4.00	1.25	1-12UNF-2B
20K lbs	7.00	5.00	2.00	1 1/4-12UNF-2B
KG/MM				
25 kgs	63.50	50.80	12.70	M6
50 - 70 kgs	63.50	50.80	12.70	M6
100 - 700 kgs	63.50	50.80	19.05	M12
1,000 - 1,500 kgs	76.20	50.80	25.40	M12
2,000 - 5,000 kgs	107.95	76.20	25.40	M20x1.5
7,000 kgs	139.70	101.60	31.75	M20x1.5
10,000 kgs	177.80	127.00	50.80	M30x2



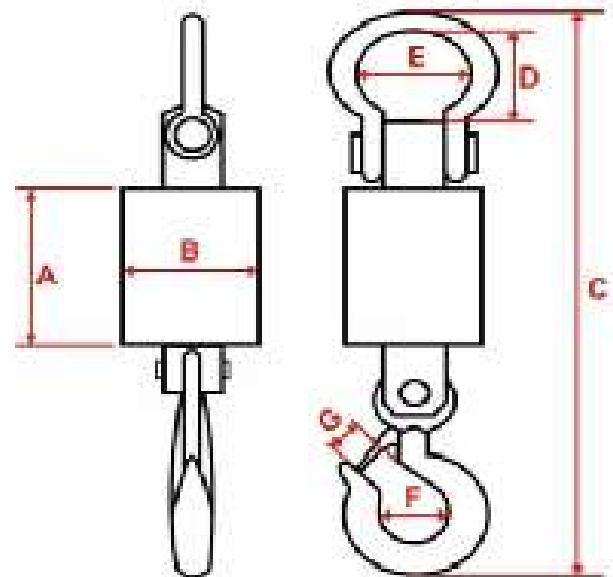
LS-W-CR

WIRELESS CRANE SCALE



FEATURES

- Completely wireless – operate and display remotely
- Transmission distance: 300ft
- Units of measure: kg/lb
- Easy-grip handheld controller/indicator
- Heavy-duty scale load cell and support
- Package configured and calibrated with 6000 divisions
- Scale power: rechargeable battery
- Additional battery for uninterrupted operation
- 5-year limited warranty



MODELS	CAPACITY	SIZE IN INCH						
		A	B	C	D	E	F	G
LS-W-CR-6K	6,000 lb x 1 lb	4.7	4.3	21.625	4.4	2.5	1.875	1.5
LS-W-CR-10K	10,000 lb x 2 lb	4.7	4.3	24.875	5.25	3	2.5	2.1
LS-W-CR-20K	20,000 lb x 5 lb	4.7	4.3	29.375	5.85	3.8	2.75	2.35

Tank Mounts





Features

- S type load cell with connection links
- Stainless Steel LCD or LED indicator
- Stainless Steel Junction box
- 5-year warranty

LS-312-TM



Features

- Double-ended (Plated Alloy Steel) load cell with Stabilizer mounts
- Stainless Steel LCD or LED indicator
- Stainless Steel Junction box
- 5-year warranty

LS-320-TM



Features

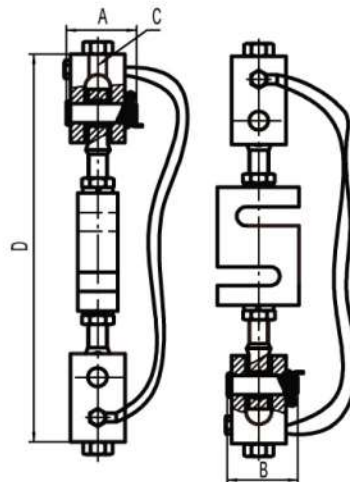
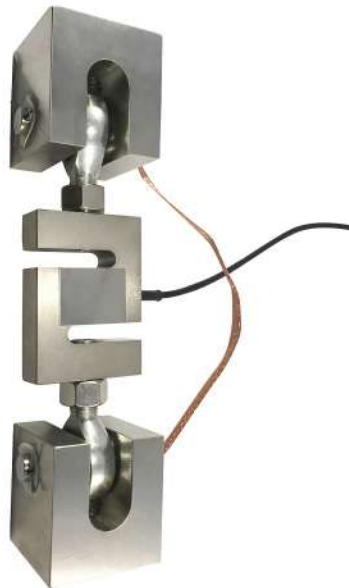
- Single-ended (Plated Alloy Steel) load cell with mount
- Stainless Steel LCD or LED indicator
- Stainless Steel Junction box
- 5-year warranty

LS-730-TM



LS-312-TM

WEIGHING ASSEMBLIES | TANK MOUNT



PRICE	
PART#	CAPACITY
LS-312-TM-0.05	50 lbs
LS-312-TM-0.1	100 lbs
LS-312-TM-0.15	150 lbs
LS-312-TM-0.2	200 lbs
LS-312-TM-0.25	250 lbs
LS-312-TM-0.3	300 lbs
LS-312-TM-0.5	500 lbs
LS-312-TM-0.75	750 lbs
LS-312-TM-1	1,000 lbs
LS-312-TM-1.5	1,500 lbs
LS-312-TM-2	2,000 lbs
LS-312-TM-2.5	2,500 lbs
LS-312-TM-3	3,000 lbs
LS-312-TM-5	5,000 lbs
LS-312-TM-10	10,000 lbs
LS-312-TM-15	15,000 lbs
LS-312-TM-20	20,000 lbs

RATED CAPACITY	DIMENSIONS				RATED CAPACITY	DIMENSIONS			
	A	B	C	D		A	B	C	D
lb/inches					kg/mm				
50-250 lbs	2.00	1.81	1/2-13 UNF	7.00	45-113 kg	50.80	45.97	1/2-13 UNF	177.80
50-250 lbs	2.00	1.81	3/8-16 UNF	7.00	45-113 kg	50.80	45.97	3/8-16 UNF	177.80
500-2,000 lbs	2.68	1.81	1/2-13 UNF	9.50	227-907 kg	68.07	45.97	1/2-13 UNF	241.30
500-2,500 lbs	2.68	2.68	5/8-11 UNF	9.50	227-907 kg	68.07	68.07	5/8-11 UNF	241.30
500-2,500 lbs	2.68	2.68	3/4-10 UNF	9.50	227-907 kg	68.07	68.07	3/4-10 UNF	241.30
3,000 lbs	3.37	3.37	3/4-10 UNF	10.50	1,361 kg	85.60	85.60	3/4-10 UNF	266.70
5,000 lbs	3.37	3.37	3/4-10 UNF	12.25	2,268 kg	85.60	85.60	3/4-10 UNF	311.15
5K - 10K lbs	3.37	3.37	1-8 UNF	12.25	2,268-4,536 kg	85.60	85.60	1-8 UNF	311.15
15,000 lbs	4.00	4.12	1 1/4-7 UNF	18.00	6,804 kg	101.60	104.65	1 1/4-7 UNF	457.20
20,000 lbs	5.00	4.12	1 1/2-6 UNF	20.00	9,072 kg	127.00	104.65	1 1/2-6 UNF	508.00

COMPLETE KIT INCLUDES:

- 3 or 4 LS-312 alloy steel load cells
- 3 or 4 LS-312-TM tension mounts
- 1 LS-416-SS stainless junction box



SPECIFICATIONS

Rated Capacity:

lbs: 50/100/150/200/250/300/500/750/
1K/1.5K/2K/2.5K/3K/5K/10K/15K/20K

Rated Output:

3.0mV/V

Load Cell Resistance:

385 OHMS

Load Cell Cable:

Standard Cable:
50 - 10K lbs: 20ft/6m
15K - 20K lbs: 40ft/12m

Safe Overload:

150% F.S

Destructive Load:

300% F.S

Excitation Recommended:

10-20V AC/DC

Operation Temperature:

-20°C - 60°C (-4°F - 104°F)

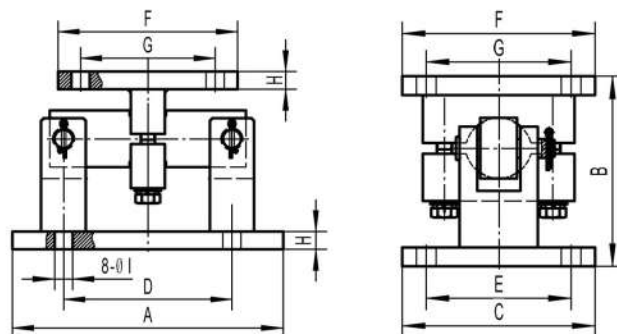
Construction:

Load Cell: Alloy Steel
Module: Alloy Steel



LS-313-TM

WEIGHING MODULE | TANK MOUNT



Complete Kit includes:

- ◆ 3 or 4 LS-313 alloy steel load cells
- ◆ 3 or 4 LS-313-TM compression mounts
- ◆ 1 LS-416-SS stainless junction box



RATED CAPACITY	DIMENSIONS									
	A	B	C	D	E	F	G	H	I	
lb/inches										
1K-5K lb	9.25	5.00	5.00	6.25	3.75	4.00	2.75	0.50	0.56	
10K-25K lb	12.00	7.90	8.00	7.50	6.00	8.00	6.00	0.75	0.81	
35K lb	12.00	7.90	8.00	7.50	6.00	8.00	6.00	0.75	0.81	
50K lb	16.25	9.30	12.00	11.50	9.50	9.00	6.50	1.00	0.81	
75K lb	16.25	9.30	12.00	11.50	9.50	9.00	6.50	1.00	0.81	
100-125K lb	23.50	11.75	14.00	20.00	12.00	10.00	8.00	1.12	1.12	
kg/mm										
454-2,268 kg	234.95	127.00	127.00	158.75	95.25	101.60	69.85	12.70	14.22	
4,536-11,340 kg	304.80	200.66	203.20	190.50	152.40	203.20	152.40	19.05	20.57	
15,876 kg	304.80	200.66	203.20	190.50	152.40	203.20	152.40	19.05	20.57	
22,680 kg	412.75	236.22	304.80	292.10	241.30	228.60	165.10	25.40	20.57	
34,020 kg	412.75	236.22	304.80	292.10	241.30	228.60	165.10	25.40	20.57	
45,360-56,700 kg	596.90	298.45	355.60	508.00	304.80	254.00	203.20	28.45	28.45	

Rated Capacity:

1K/1.5K/2K/2.5K/3/5K/10K
15K/20K/25K/35K/50K/75K
100K/125K lb

Rated Output:

3.0mV/V

Load Cell Resistance:

700 OHMS

Excitation Recommended:

10-15 V AC/DC

Operation Temperature:

-20°C - 60°C (-4°F-140°F)

Construction:

Load cell: Alloy Steel
Module: Alloy Steel

Load Cell Cable:

Standard Cable
1K-35K lb: 40ft/12m
Double - shielded Cable
50K-125K lb: 60ft/18m

Safe Overload:

150% F.S.

Destructive Load:

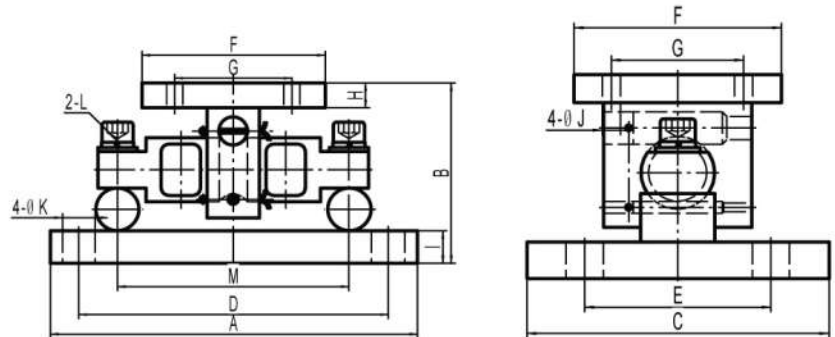
300% F.S.





LS-320-TM

WEIGHING ASSEMBLIES | TANK MOUNT



RATED CAPACITY	DIMENSIONS												
	A	B	C	D	E	F	G	H	I	J	K	L	M
lb/inches													
5K - 20K lbs	11.00	5.31	7.50	8.00	4.00	6.00	3.00	0.50	0.75	0.56	1.06	5/8-18UNF	6.87
30K - 60K lbs	15.00	8.43	10.00	11.50	6.00	8.00	5.12	0.75	1.00	0.68	1.19	1-14UNF	8.50
100K lbs	18.00	10.37	12.00	14.00	9.00	10.00	7.50	1.25	1.25	0.81	1.38	1-14UNF	9.50
150K lbs	18.00	10.37	12.00	14.00	9.00	10.00	7.50	1.25	1.25	0.81	1.38	1-14UNF	9.50
200K - 250K lbs	26.00	16.75	12.00	20.00	6.00	12.00	9.00	2.00	2.00	1.06	1.88	1 1/2-12UNF	13.00
kg/mm													
2,268-9,072 kg	279.40	134.87	190.50	203.20	101.60	127.00	76.20	12.70	19.05	14.22	26.92	5/8-18UNF	174.50
13,068-27,216 kg	381.00	214.12	254.00	292.10	152.40	203.20	130.05	19.05	25.40	17.27	30.23	1-14UNF	215.90
45,380 kg	457.20	263.40	304.80	355.60	228.60	254.00	190.50	31.75	31.75	20.57	35.05	1-14UNF	241.30
68,040 kg	457.20	263.40	304.80	355.60	228.60	254.00	190.50	31.75	31.75	20.57	35.05	1-14UNF	241.30
90,720-113,400 kg	660.40	425.45	304.80	508.00	152.40	304.80	228.60	50.80	50.80	26.92	47.75	1 1/2-12UNF	330.20

PART#	CAPACITY
LS-320-TM-5	5,000 lbs
LS-320-TM-10	10,000 lbs
LS-320-TM-20	20,000 lbs
LS-320-TM-30	30,000 lbs
LS-320-TM-40	40,000 lbs
LS-320-TM-50	50,000 lbs
LS-320-TM-60	60,000 lbs
LS-320-TM-100	100,000 lbs
LS-320-TM-150	150,000 lbs
LS-320-TM-200	200,000 lbs
LS-320-TM-250	250,000 lbs

COMPLETE KIT INCLUDES:

- 3 or 4 LS-320 alloy steel load cells
- 3 or 4 LS-320-TM compression mounts
- 1 LS-416-SS stainless junction box



SPECIFICATIONS

Rated Capacity:

Ibs: 5K/10K/20K/30K/40K/50K/60K/
100K/150K/200K/250K

Rated Output:

3.0mV/V

Load Cell Resistance:

700 OHMS

Load Cell Cable:

Standard Cable
5K-40K lbs: 40ft/12m
Double-Shielded
50K-250K lbs: 60ft/18m

Safe Overload:

150% F.S

Destructive Load:

300% F.S

Excitation Recommended:

10-15V AC/DC

Operation Temperature:

-20°C - 60°C (-4°F - 104°F)

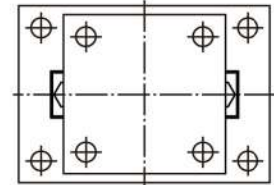
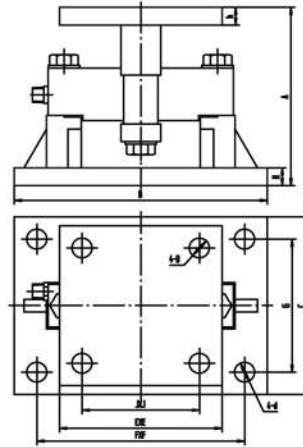
Construction:

Load Cell: Alloy Steel
Module: Alloy Steel



LS-350-TM

WEIGHING ASSEMBLIES | TANK MOUNT



PRICE	
PART#	CAPACITY
LS-350-TM-20	20,000 lbs
LS-350-TM-25	25,000 lbs
LS-350-TM-30	30,000 lbs
LS-350-TM-40	40,000 lbs
LS-350-TM-50	50,000 lbs
LS-350-TM-100	100,000 lbs
LS-350-TM-200	200,000 lbs

RATED CAPACITY	DIMENSIONS											
	A	B	C	D	d	E	F	G	H	h	J	
lb/inches												
20K - 25K lbs	4.00	10.00	8.00	0.78	0.78	8.00	7.50	6.00	0.75	0.75	6.00	
30K - 40K lbs	4.00	14.00	10.00	0.78	0.78	8.00	11.50	7.50	1.00	0.75	6.00	
50K - 100K lbs	7.00	14.00	10.00	1.12	1.12	9.00	11.50	7.50	1.00	1.00	6.50	
200K lbs	8.00	25.00	16.00	1.63	1.63	12.00	20.00	11.00	1.50	1.50	8.00	
kg/mm												
9,072-11,340 kg	101.60	254.00	203.20	19.81	19.81	203.20	190.50	152.40	19.05	19.05	152.40	
13,608-18,144 kg	101.60	355.60	254.00	19.81	19.81	203.20	292.10	109.50	25.40	19.05	152.40	
22,680-45,360 kg	177.80	355.60	254.00	28.45	28.45	228.60	292.10	190.50	25.40	25.40	165.10	
90,720 kg	203.20	635.00	406.40	41.40	41.40	304.80	508.00	279.40	38.10	38.10	203.20	

COMPLETE KIT INCLUDES:

- 3 or 4 LS-350 alloy steel load cells
- 3 or 4 LS-350-TM compression mounts
- 1 LS-416-SS stainless junction box

SPECIFICATIONS

- Rated Capacity:**
lbs: 20K/25K/30K/40K/50K/100K/200K
- Rated Output:**
3.0mV/V
- Load Cell Resistance:**
700 OHMS
- Load Cell Cable:**
STANDARD
10K - 40K lbs: 40ft/12m
DOUBLE-SHIELDED
50K - 200K lbs: 60ft/18m
- Safe Overload:**
150% F.S
- Destructive Load:**
300% F.S

- Excitation Recommended:**
10-15V AC/DC
- Operation Temperature:**
-20°C - 60°C (-4°F - 104°F)
- Construction:**
Load Cell: Alloy Steel
Module: Alloy Steel





LS-352-TM

WEIGHING ASSEMBLIES | TANK MOUNT

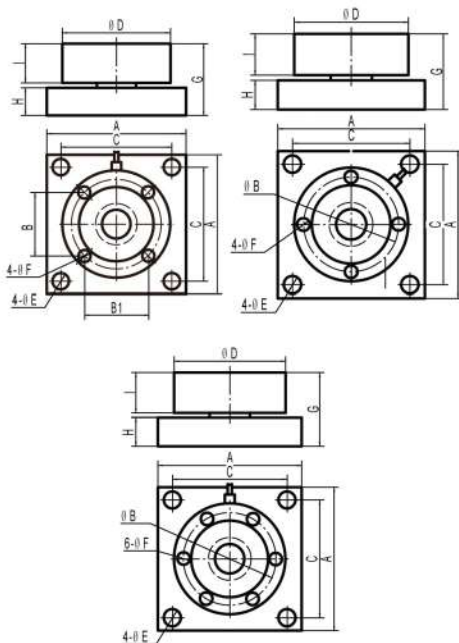


COMPLETE KIT INCLUDES:

- 3 or 4 LS-352 alloy steel load cells
- 3 or 4 LS-352-TM compression mounts
- 1 LS-416-SS stainless junction box

PRICING INFORMATION

MODEL	CAPACITY
ALLOY STEEL	
LS-352-TM-5	5,000 lbs
LS-352-TM-10	10,000 lbs
LS-352-TM-15	15,000 lbs
LS-352-TM-20	20,000 lbs
LS-352-TM-25	25,000 lbs
LS-352-TM-35	35,000 lbs
LS-352-TM-50	50,000 lbs
LS-352-TM-60	60,000 lbs
LS-352-TM-75	75,000 lbs
LS-352-TM-100	100,000 lbs
LS-352-TM-150	150,000 lbs
LS-352-TM-200	200,000 lbs
LS-352-TM-250	250,000 lbs
LS-352-TM-300	300,000 lbs
LS-352-TM-400	400,000 lbs
LS-352-TM-450	450,000 lbs



RATED CAPACITY	DIMENSIONS									
	A	B	C	D	E	F	G	H	I	J
lb/inches										
5K-10K lbs	4.00	2.00	3.25	3.50	0.40	3/8-16	1.35	0.375	0.75	N/A
15K lbs	4.00	2.00	3.25	3.50	0.40	3/8-16	1.60	0.625	0.75	N/A
20K-50K lbs	7.00	3.75	5.50	6.00	0.63	1/2-13	2.48	0.75	1.30	1/2-14NPT
60K-100K lbs	8.00	4.25	6.50	7.00	0.81	3/4-16	2.50	1.00	1.30	1/2-14NPT
150K-200K lbs	10.00	7.83	8.00	9.00	1.10	1-14	4.75	2.00	1.70	1/2-14NPT
250K-450K lbs	11.00	7.75	9.00	9.00	1.30	7/8-14	6.42	3.00	2.25	1/2-14NPT
kg/mm										
2,268-4,536 kg	101.60	50.80	82.55	88.90	10.16	3/8-16	34.29	9.53	19.05	N/A
6,804 kg	101.60	50.80	82.55	88.90	10.16	3/8-16	40.64	15.88	19.05	N/A
9,072-22,680 kg	177.80	95.25	139.70	152.40	16.00	1/2-13	62.99	19.05	33.02	1/2-14NPT
27,216-45,360 kg	203.20	107.95	165.10	177.80	20.57	3/4-16	63.50	25.40	33.02	1/2-14NPT
68,040-90,720 kg	254.00	198.88	203.20	228.60	27.94	1-14	120.65	50.80	43.18	1/2-14NPT
113,400-204,120 kg	279.40	196.85	228.60	228.60	33.02	7/8-14	163.09	76.20	57.15	1/2-14NPT

SPECIFICATIONS

Rated Capacity:

lbs: 5K/10K/15K/20K/25K/35K/50K/60K/75K/100K/150K/200K/250K/300K/400K/450K

Rated Output:

4.0mV/V

Load Cell Resistance:

350 OHMS

Load Cell Cable:

Standard Cable
60ft/18m

Safe Overload:

150% F.S

Destructive Load:

300% F.S

Excitation Recommended:

10-15V AC/DC

Operation Temperature:

-20°C - 60°C (-4°F - 104°F)

Construction:

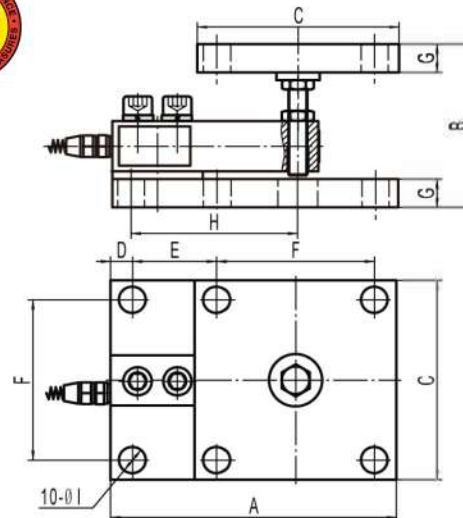
Load Cell: Alloy Steel
Module: Alloy Steel





LS-730-TM

WEIGHING ASSEMBLIES | TANK MOUNT



PRICE	
PART#	CAPACITY
LS-730-SS-TM-0.25	250 lbs
LS-730-SS-TM-0.5	500 lbs
LS-730-SS-TM-1	1,000 lbs
LS-730-SS-TM-1.5	1,500 lbs
LS-730-SS-TM-2	2,000 lbs
LS-730-SS-TM-2.5	2,500 lbs
LS-730-SS-TM-4	4,000 lbs
LS-730-SS-TM-5	5,000 lbs
LS-730-SS-TM-5-LE	5,000 LE lbs
LS-730-SS-TM-10	10,000 lbs
LS-730-SS-TM-15	15,000 lbs
LS-730-SS-TM-20	20,000 lbs

RATED CAPACITY	DIMENSIONS								
	A	B	C	D	E	F	G	H	I
lb/inches									
250 - 5K lbs	7.12	4.00-4.50	5.00	0.56	2.00	4.00	0.70	4.00	0.63
5K LE - 10K lbs	8.50	5.00-5.50	5.00	0.75	3.00	4.00	0.94	5.00	0.63
15K - 20K lbs	10.88	7.00-7.50	6.00	0.87	4.63	4.50	1.44	6.88	0.88
kg/mm									
113-2,268 kg	180.85	101.60-114.30	127.00	14.22	50.80	101.60	17.78	101.60	16.00
2,268 LE-4,536 kg	215.90	127.00-139.70	127.00	19.05	76.20	101.60	23.88	127.00	16.00
6,804-9.072 kg	276.35	177.80-190.50	152.40	22.10	117.60	114.30	36.58	174.75	22.35

COMPLETE KIT INCLUDES:

- 3 or 4 LS-730 NTEP certified alloy steel load cells
- 3 or 4 LS-730-TM compression mounts
- 1 LS-416-SS stainless junction box

SPECIFICATIONS

Rated Capacity:
 lbs: 250/500/1K/1.5K/2K/2.5K/
 4K/5K/5K LE/10K/15K/20K

Rated Output:
 3.0mV/V

Load Cell Resistance:
 350 OHMS

Load Cell Cable:
 Standard Cable:
 250 - 5K lbs: 20ft/6m
 10K - 20K lbs: 40ft/12m

Safe Overload:
 150% F.S

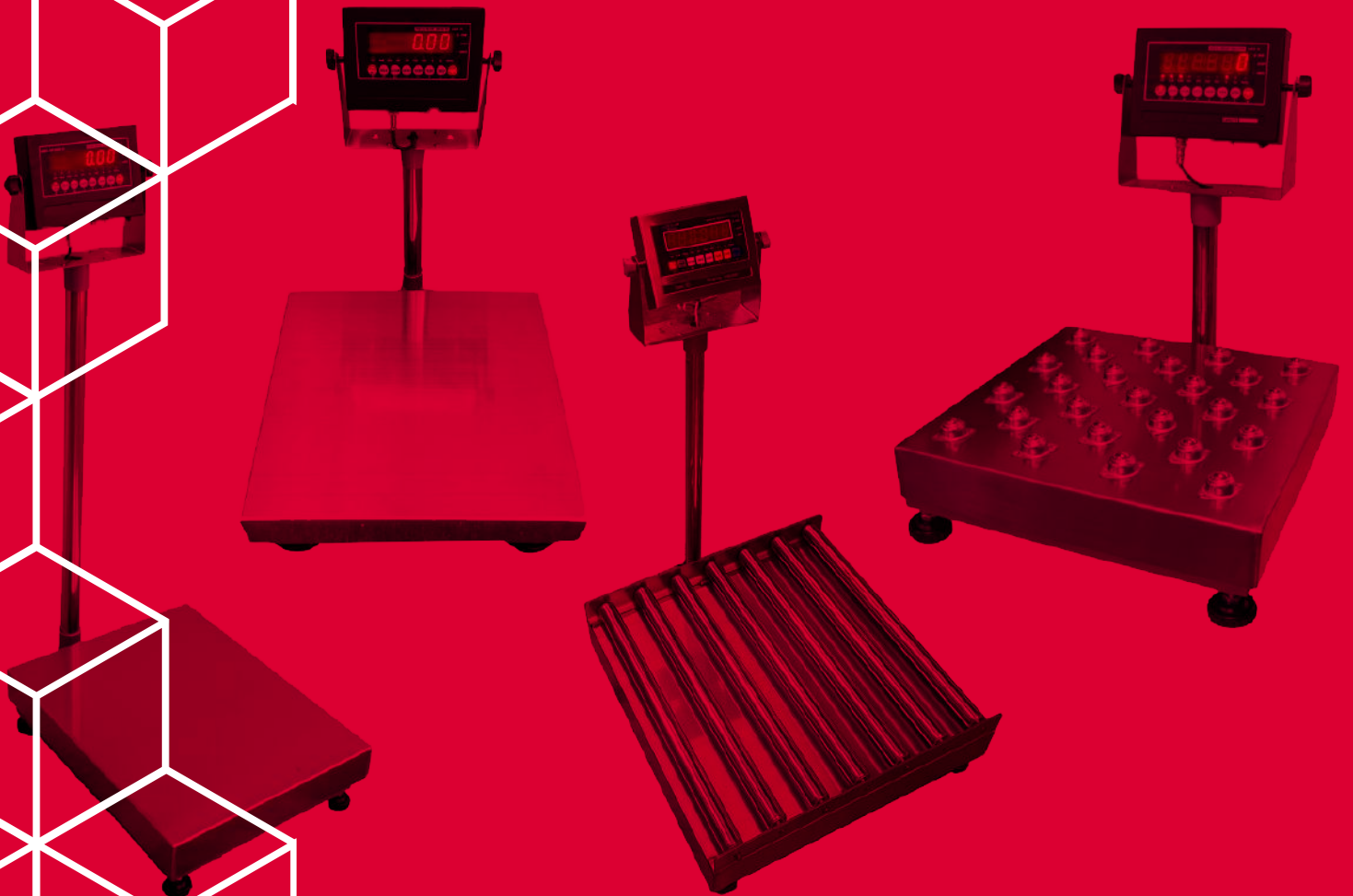
Destructive Load:
 300% F.S

Excitation Recommended:
 10-15V AC/DC

Operation Temperature:
 -10°C - 40°C (14°F - 104°F)

Construction:
 Load Cell: Stainless Steel
 Module: Stainless Steel





BENCH SCALES



Stainless Steel Wash-down Bench Scale

Features

- Welded sturdy construction
- US Legal For Trade CC #: 22-026
- Factory Calibrated
- Overload Protection
- 5-year warranty

SL-915-SS



Diamond Plate Bench Scale

Features

- Designed for speed and accuracy
- US Legal For Trade CC #: 22-026
- Factory Calibrated
- Overload Protection
- 5-year warranty

SL-915-BWD



Transfer Top Bench Scale

Features

- Welded sturdy construction
- US Legal For Trade CC #: 22-026
- Factory Calibrated
- Overload Protection
- 5-year warranty

SL-915-BT



Roller Top Bench Scale

Features

- Welded sturdy construction
- US Legal For Trade CC #: 22-026
- Factory Calibrated
- Overload Protection
- 5-year warranty

SL-915-RT



LS-915

BENCH SCALES



FEATURES

- ✓ Mild steel base, 304 stainless steel pan for easy cleaning
- ✓ Adjustable tilt display for convenient viewing
- ✓ Aluminum environmentally sealed single point load cell
- ✓ Adjustable feet provide exceptional traction
- ✓ Standard removable column and wall mounting option
- ✓ LS-7510 NTEP indicator with 6 digit, 0.9" display (LED standard)
- ✓ Check-weighing feature for quick portioning
- ✓ Units: lbs, kgs, (g, oz, lb:oz available on LCD indicator)
- ✓ Rechargeable battery (up to 72 hours continuous use) and AC operation
- ✓ Tare, Zero, Hold, Counting & Accumulation features
- ✓ Built-in RS-232 communication port
- ✓ Bubble level
- ✓ 5 year warranty on the platform & electronics
- ✓ US Legal For Trade CC #: 22-026

SPECIFICATIONS

- ✓ Power: 6V 4Ah rechargeable lead acid battery with 110V power supply
- ✓ Frequency: 50 or 60 Hz
- ✓ Serial Communications: Full duplex RS-232, 9600, 4800, 2400, 1200 bps; 8 data bits, 1 stop bits, no parity, no handshaking
- ✓ Operating Temperature: 5°F to 104°F (-4°C to 40°C)
- ✓ IP Rating: IP65
- ✓ Approvals: NTEP CC 11-016, Class III 5,000 d; Measurement Canada AM-5817, Class III 5,000 d



LS-915

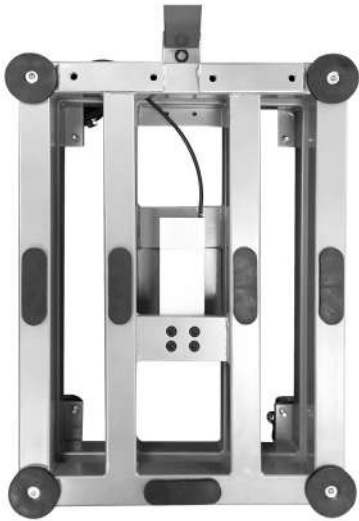
BENCH SCALES

MODELS	DESCRIPTION	CAPACITY	PLATFORM SIZE	SHIPMENT WEIGHT
STANDARD (INC. INDICATOR AND COLUMN)				
SL-915-1212-100	MS1 Platform/SS2 Cover	100 LB X 0.02 LB	12" x 12" x 4" H	23 lbs
SL-915-1214-150	MS1 Platform/SS2 Cover	150 LB X 0.02 LB	12" x 14" x 4" H	23 lbs
SL-915-1616-300	MS1 Platform/SS2 Cover	300 LB X 0.05 LB	16" x 16" x 4.25" H	32 lbs
SL-915-1620-400	MS1 Platform/SS2 Cover	400 LB X 0.05 LB	16" x 20" x 4.25" H	38 lbs
SL-915-1818-400	MS1 Platform/SS2 Cover	400 LB X 0.05 LB	18" x 18" x 4.25" H	38 lbs
SL-915-2020-500	MS1 Platform/SS2 Cover	500 LB X 0.1 LB	20" x 20" x 4.25" H	62 lbs
SL-915-1824-500	MS1 Platform/SS2 Cover	500 LB X 0.1 LB	18" x 24" x 5.5" H	64 lbs
SL-915-2424-500	MS1 Platform/SS2 Cover	500 LB X 0.1 LB	24" x 24" x 5.5" H	70 lbs
SL-915-2424-1K	MS1 Platform/SS2 Cover	1,000 LB X 0.2 LB	24" x 24" x 5.5" H	70 lbs
SL-915-3030-1K	MS1 Platform/SS2 Cover	1,000 LB X 0.2 LB	30" x 30" x 5.5" H	70 lbs
WITH STAINLESS BALL TRANSFER TOP (INC. INDICATOR AND COLUMN) ALSO AVAILABLE IN STAINLESS STEEL				
SL-915BT-1616-300	Ball Transfer Cover	300 LB X 0.05 LB	16" x 16" x 4.25" H	32 lbs
SL-915BT-2020-500	Ball Transfer Cover	500 LB X 0.1 LB	20" x 20" x 4.25" H	62 lbs
SL-915BT-2424-500	Ball Transfer Cover	500 LB X 0.1 LB	24" x 24" x 5.5" H	70 lbs
SL-915BT-2424-1K	Ball Transfer Cover	1,000 LB X 0.2 LB	24" x 24" x 5.5" H	70 lbs
WITH STAINLESS ROLLER CONVEYOR TOP (INC. INDICATOR AND COLUMN) ALSO AVAILABLE IN STAINLESS STEEL				
SL-915RT-1818-400	Roller Top Cover	400 LB X 0.05 LB	18" x 18" x 4.25" H	38 lbs
SL-915RT-2424-500	Roller Top Cover	500 LB X 0.1 LB	24" x 24" x 5.5" H	70 lbs
SL-915RT-2424-1K	Roller Top Cover	1,000 LB X 0.2 LB	24" x 24" x 5.5" H	70 lbs



LS-915-BW

NTEP CERTIFIED PORTABLE BENCH SCALE



OPTIONAL ACCESSORIES

Printer
Remote Display
Software

FEATURES

- ✓ Designed for speed and accuracy with an extremely heavy-duty platform, built-in back rails, and wheels
- ✓ Ideal for busy shipping docks, outdoor markets, manufacturers, food processing, and other bulk sales
- ✓ High Resolution with overload protection
- ✓ Some sizes can have wheels replaced by level feet
- ✓ Standard Package Includes: Platform, Shroud, Indicator (Legal for Trade), Load Cells, Column, Wheels, Hardware
- ✓ US Legal For Trade CC #: 22-026
- ✓ Factory Calibrated
- ✓ Overload Protection
- ✓ 5-year warranty on parts

SPECIFICATIONS

Pan/Frame Material: Alloy Steel
Accuracy Class (SL-7510): 5000 e
Resolution: Display 30,000; ADC 2,000,000
Zero Stability Error: TK0 < 0.1 μ V//K
Span Stability Error: TKspn < \pm 6 ppm//K
Sensitivity (Internal): 0.3 μ V/d
Input Voltage: -30 ~ 30mV DC
Excitation Circuit: 5 VDC, 4 wire connection (+Exec, -Exec, +Sig, -Sig);
 Maximum 6 x 350 Ω load cells
Power: AC100~250V;
 Rechargeable battery optional
Temperature/Humidity: -10 $^{\circ}$ C ~ +40 $^{\circ}$ C; \leq 90%RH
Storage Temperature: -40 $^{\circ}$ C ~ +70 $^{\circ}$ C;

MODELS	CAPACITY in lb	ACCURACY	PLATFORM SIZE
LS-915BW-1824-500	500 lb	0.1 lb	18"x24"
LS-915BW-2424-500	500 lb	0.1 lb	24"x24"



LS-915-BC

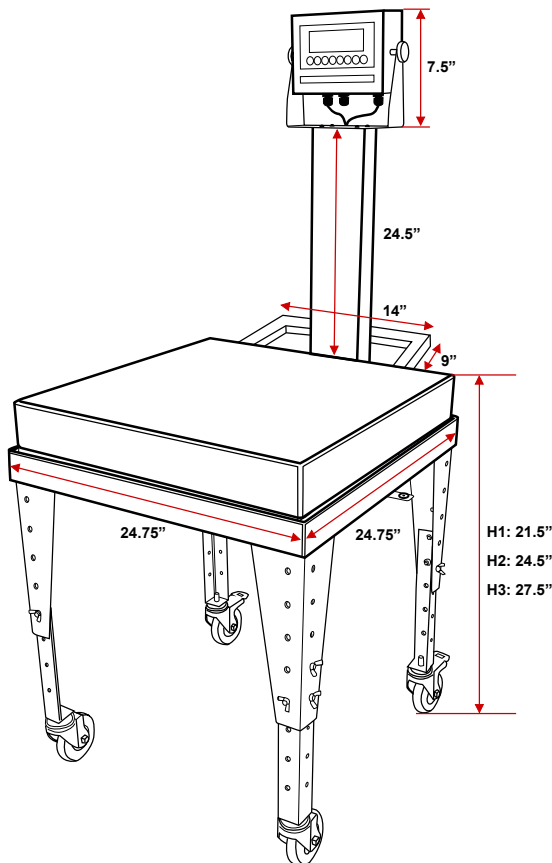
BENCH SCALE CART

FEATURES

- ✓ For use with LS-915-SS Bench Scales
- ✓ Stainless Steel welded construction
- ✓ Ideal for use in the food and chemical industry
- ✓ Wheeled design for effortless smooth movement, easy portability and fast setup
- ✓ Locking rear casters allows for stability
- ✓ Adjustable cart legs can be raised or lowered to fit into assembly lines
- ✓ Rear handle for easy transporting
- ✓ Remove indicator stand
- ✓ Tilt-able indicator for eliminating glare
- ✓ 1,000 lb capacity

MODELS	PLATFORM SIZE	SHIP WT.
LS-915-CT18	18"x24"	50 lbs
LS-915-CT24	24"x24"	70 lbs

* SHOWN WITH BENCH SCALE (SOLD SEPARATELY)



* SHOWN WITH 4 CASTERS (OPTIONAL)



LS-915-SS

STAINLESS STEEL BENCH SCALE



FEATURES

- ✓ Stainless Steel scale and indicator made to be easily sprayed down for washing
- ✓ Welded sturdy construction
- ✓ The ideal weighing solution for applications such as portion control, food processing, straight weighing, or over/under weighing
- ✓ High accuracy single point strain gauge aluminum load cell
- ✓ Designed for speed and accuracy with an extremely heavy-duty platform and rugged stainless steel enclosure
- ✓ Ideal for busy shipping docks, outdoor markets, manufacturers, food processing, and other bulk sales
- ✓ High resolution with overload protection
- ✓ Standard package includes: platform, shroud, indicator (Legal for Trade), load cells, column, level feet, and all necessary hardware
- ✓ NTEP Class III, 5000 divisions
- ✓ US Legal For Trade CC #: 22-026
- ✓ Factory Calibrated
- ✓ Overload Protection
- ✓ 5-year warranty on parts

SPECIFICATIONS

Pan/Frame Material: Stainless Steel
Accuracy Class (SL-7510): 5000 e
Resolution: Display 30,000; ADC 2,000,000
Zero Stability Error: TK0 < 0.1 μ V//K
Span Stability Error: TKspn < \pm 6 ppm//K
Sensitivity (Internal): 0.3 μ V/d
Input Voltage: -30 ~ 30mV DC
Excitation Circuit: 5 VDC, 4 wire connection (+Exec, -Exec, +Sig, -Sig);
 Maximum 6 x 350 Ω load cells
Power: AC100~250V;
 Rechargeable battery optional
Temperature/Humidity: -10 $^{\circ}$ C ~ +40 $^{\circ}$ C; \leq 90%RH
Storage Temperature: -40 $^{\circ}$ C ~ +70 $^{\circ}$ C;

OPTIONAL ACCESSORIES

Printer
 Remote Display
 Software



LS-915-SS

STAINLESS STEEL BENCH SCALE

MODELS	CAPACITY in lb	ACCURACY	PLATFORM SIZE
SL-915SS-HP-6	6 lbs	0.0002 lb	10"x10"
SL-915SS-HP-15	15 lbs	0.0005 lb	10"x10"
SL-915SS-HP-30	30 lbs	0.001 lb	10"x10"
SL-915SS-HP-60	60 lbs	0.002 lb	10"x10"
SL-915SS-1212-100	100 lbs	0.02 lb	12"x12"
SL-915SS-1214-100	100 lbs	0.02 lb	12"x14"
SL-915SS-1616-300	300 lbs	0.05 lb	16"x16"
SL-915SS-1620-400	400 lbs	0.05 lb	16"x20"
SL-915SS-1818-400	400 lbs	0.05 lb	18"x18"
SL-915SS-2020-500	500 lbs	0.1 lb	20"x20"
SL-915SS-1824-500	500 lbs	0.1 lb	18"x24"
SL-915SS-2424-500	500 lbs	0.1 lb	24"x24"
SL-915SS-2424-1000	1000 lbs	0.2 lb	24"x24"





INDICATORS



Stainless Steel Indicator with Printer

Features

- Stainless Steel casing
- AC adapter included (Battery is optional)
- Count weighing
- Accumulation weighing
- 5-year warranty

LS-7510-SS-P



Replacement Indicator

Features

- Multiple weighing units: (lb/oz/kg)
- Low power design, longer battery usage time
- Hold function, locks the weight
- Prints with SL-25-T Thermal receipt printer
- 5-year warranty

LS-7515-C



Bright LCD Indicator

Features

- Plastic Casing
- Multiple weighing units: (kg/lb)
- Multiple Hold functions
- Automatic Power off
- 5-year warranty

LS-7516



Explosion Proof Indicator

Features

- Stainless Steel casing
- AC adapter included (Battery is included)
- Multiple Hold functions
- Power saving mode
- 5-year warranty

XK-3150-EX



LS-7510
INDICATOR SERIES





LS-7510

INDICATOR SERIES

SPECIFICATIONS

- ✓ **Display:** LCD or LED; 1in. x 6 digit numeric
- ✓ **Units:** lb, kg (primary), oz, g
- ✓ **Accuracy Class:** 5,000 e
- ✓ **Resolution:** 120,000 dd industrial; 10,000 dd HB44
- ✓ **Excitation Voltage:** 5V DC
- ✓ **Largest output current:** 120 mA
- ✓ **Excitation circuit:** 5 VCD, 4 wire connections
- ✓ **Load Cell:** 6 load cells of 350 Ω maximum
- ✓ **Load Cell Excitation:** 5 \pm 0.5VDC
- ✓ **Display Resolution:** 30,000; ADC: 2,000,000
- ✓ **Zero Stability Error:** TKspn < \pm 6 ppm//K
- ✓ **Sensitivity (internal):** 0.3 μ V/d
- ✓ **Input voltage:** -30 to +30mV DC
- ✓ **Power:** 100~240VAC @ 50/60Hz
- ✓ **Power Consumption:** 5W @9VDC
- ✓ **Operating Temp.:** 14 $^{\circ}$ F to 104 $^{\circ}$ F (-10 $^{\circ}$ C to +40 $^{\circ}$ C)
- ✓ **Internal Resolution:** 24 bit A/D Sigma-Delta; 1,048,000 d
- ✓ **Display Increment:** Selectable 1, 2, 5, 10, 20, 50
- ✓ **Decimal Point:** Selectable 0, 1, 2, 3, 4
- ✓ **Conversion Rate:** 12 samples / second typical
- ✓ **Analog Signal Input Range:** 1mV / V to 3mV/V
- ✓ **Analog Signal Sensitivity:** 0.1 μ V / graduation (min)
- ✓ **Measurement Rate:** 0~15mV
- ✓ **Auto Zero Tracking:** 0 - 5 dd increments
- ✓ **NTEP COC #:** 22-027

FEATURES

- ✓ Indicator is constructed with a Painted Steel, Stainless Steel or IP67 NEMA 4X Washdown Stainless Steel enclosure
- ✓ AC adapter included (Battery is optional)
- ✓ Available in LCD and LED (both)
- ✓ Gross/Tare/Pre-Set Tare/Zero
- ✓ Multiple Hold functions
- ✓ Count weighing
- ✓ Accumulation weighing
- ✓ Overload / Underload alarm
- ✓ Power saving mode
- ✓ Automatic date and time update
- ✓ Ability to modify gravity based on different geographical locations
- ✓ 100% manual zero range setting
- ✓ Automatic error warning alarm
- ✓ Splash proof keyboard and display
- ✓ Connects to a remote display
- ✓ Connects to multiple printers
- ✓ NTEP approved for 5,000 divisions
- ✓ Displays up to 50,000 graduations
- ✓ 2 port Indicator (for weigh bars or 2 scales connection)
- ✓ Mounting bracket and Hardware (included)
- ✓ Full Duplex RS-232 Serial Port
- ✓ 5 year warranty

OPTIONAL FEATURES

- ✓ LED or LCD display option
- ✓ Stainless steel or mild steel casing
- ✓ NEMA 4X Washdown casing
- ✓ Relay & Analog output
- ✓ 6V Rechargeable Battery
- ✓ Data Logging Software
- ✓ Wireless capability

ACCESSORIES

- ✓ Thermal Ticket Printer
- ✓ Label Printer
- ✓ Zebra Label Printer
- ✓ Remote Display
- ✓ Indicator Stand
- ✓ Stainless steel enclosure
- ✓ I/O Card to control external system



LS-7510

INDICATOR SERIES

MODELS	DISPLAY	CASING	IP	POWER	CONNECTION	SHIPMENT WEIGHT
MILD STEEL						
LS-7510-E-01	LED	Mild Steel	65	AC Adapter	Quick Disconnect	5 lbs
LS-7510-C-01	LCD	Mild Steel	65	AC Adapter	Quick Disconnect	5 lbs
LS-7510-E-02	LED	Mild Steel	65	AC Adapter & Battery	Quick Disconnect	5 lbs
LS-7510-C-02	LCD	Mild Steel	65	AC Adapter & Battery	Quick Disconnect	5 lbs
STAINLESS STEEL						
LS-7510-SS-E-11	LED	Stainless Steel	65	AC Adapter	Quick Disconnect	5 lbs
LS-7510-SS-C-11	LCD	Stainless Steel	65	AC Adapter	Quick Disconnect	5 lbs
LS-7510-SS-E-12	LED	Stainless Steel	65	AC Adapter & Battery	Quick Disconnect	5 lbs
LS-7510-SS-C-12	LCD	Stainless Steel	65	AC Adapter & Battery	Quick Disconnect	5 lbs
WASHDOWN						
LS-7510-SS-E-13	LED	NEMA 4, Stainless Steel	66	Power Supply Only	Quick Disconnect	7 lbs
LS-7510-SS-C-13	LCD	NEMA 4, Stainless Steel	66	Power Supply Only	Quick Disconnect	7 lbs
LS-7510-SS-E-23	LED	NEMA 4, Stainless Steel	66	Power Supply & Battery	Hardwire	7 lbs
LS-7510-SS-C-23	LCD	NEMA 4, Stainless Steel	66	Power Supply & Battery	Hardwire	7 lbs
WITH BUILT-IN THERMAL PRINTER						
LS-7510-SS-P-E	LED	Stainless Steel	65	AC Adapter & Battery	Quick Disconnect	8 lbs
LS-7510-SS-P-C	LCD	Stainless Steel	65	AC Adapter & Battery	Quick Disconnect	8 lbs
LS-7512-SS-P-E	LED	Stainless Steel	65	AC Adapter & Battery	Quick Disconnect	8 lbs
LS-7512-SS-P-C	LCD	Stainless Steel	65	AC Adapter & Battery	Quick Disconnect	8 lbs
WITH 4-20MA ANALOG OUTPUT						
LS-7510-E-A/O	LED	Mild Steel	65	AC Adapter	Quick Disconnect	5 lbs
LS-7510-C-A/O	LCD	Mild Steel	65	AC Adapter	Quick Disconnect	5 lbs
LS-7510-SS-E-A/O	LED	Stainless Steel	65	AC Adapter	Quick Disconnect	5 lbs
LS-7510-SS-C-A/O	LCD	Stainless Steel	65	AC Adapter	Quick Disconnect	5 lbs
WITH 0-5V RELAY OUTPUT						
LS-7510-E-R/O	LED	Mild Steel	65	AC Adapter	Quick Disconnect	5 lbs
LS-7510-C-R/O	LCD	Mild Steel	65	AC Adapter	Quick Disconnect	5 lbs
LS-7510-SS-E-R/O	LED	Stainless Steel	65	AC Adapter	Quick Disconnect	5 lbs
LS-7510-SS-C-R/O	LCD	Stainless Steel	65	AC Adapter	Quick Disconnect	5 lbs

LS-7515-C

INDICATOR



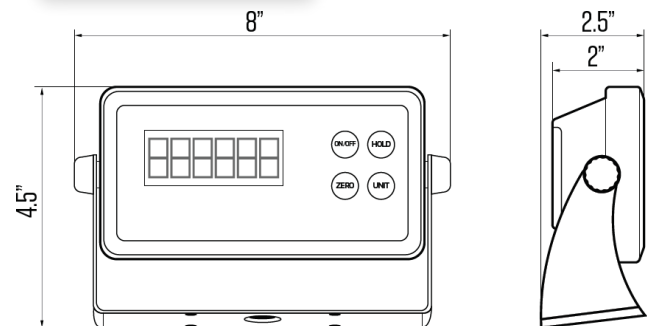
FEATURES

- ✓ Smooth indicator shape with steady performance PCB board, is suitable for industrial or commercial use
- ✓ Multiple weighing units: (lb/oz/kg)
- ✓ Gross/Tare/Zero
- ✓ Low power design, longer battery usage time
- ✓ Hold function, locks the weight
- ✓ Idle mode and automatic power-off function
- ✓ Low-battery detection and warning
- ✓ 6 digits 0.7" tall LCD display with backlight
- ✓ Splash-proof keyboard and display
- ✓ RS232 Output
- ✓ Only prints with LS-25-T Thermal receipt printer (Label papers also available)
- ✓ Stainless steel wall mount bracket included
- ✓ 5 year warranty

OPTIONS / ACCESSORIES

- ✓ Thermal Ticket Printer
- ✓ Stainless Steel Stand
- ✓ Painted Mild Steel Stand

DIMENSIONS



SPECIFICATIONS

- ✓ **Display:** 6 digit 0.7" tall LCD display with backlight
- ✓ **Units:** lb, kg (primary); oz (secondary)
- ✓ **Accuracy Class:** OIML III, n=3000e
- ✓ **Resolution:** 120,000 dd industrial; 10,000 dd HB44
- ✓ **Load Cell:** 4 load cells of 350 Ω maximum
- ✓ **Load Cell Excitation:** 5 \pm 0.5VDC
- ✓ **Display Resolution:** Up to 1/15,000 Display Resolution
- ✓ **Operating Temp.:** 14 $^{\circ}$ F to 104 $^{\circ}$ F (-10 $^{\circ}$ C to +40 $^{\circ}$ C)
- ✓ **Weight:** 1.2 lbs
- ✓ **Display Resolution:** Up to 1/15000
- ✓ **Display Increment:** Selectable 1, 2, 5, 10, 20, 50
- ✓ **Decimal Point:** Selectable 0, 1, 2, 3, 4 decimal places
- ✓ **Tare range:** 2%~100% max. capacity
- ✓ **Initial zero range:** \pm 10% max. capacity
- ✓ **Manual zero range:** \pm 2% max. capacity



LS-7516-B

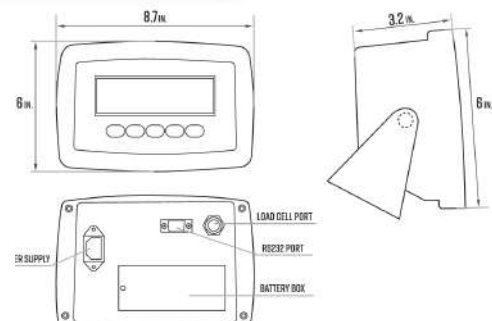
INDICATOR



FEATURES

- ✓ Plastic Casing
- ✓ LED or LCD display option
- ✓ Multiple weighing units: (kg/lb)
- ✓ General weighing: Gross/Tare/Zero
- ✓ Multiple Hold functions (animal weighing, peak-hold, manual-hold, auto-hold)
- ✓ Overload / Underload indication
- ✓ Print option
- ✓ Only Prints with LS-25-T Thermal receipt printer
(Label papers also available)
- ✓ Built-in rechargeable Battery
- ✓ Low battery reminder
- ✓ Automatic Power off (power saving mode)
- ✓ 2 port Indicator (for weigh bars or 2 scales connection)
- ✓ 5 year warranty

DIMENSIONS





LS-7516-B

INDICATOR

SPECIFICATIONS

- ✓ **Display:** LCD or LED 1-inch x 6-digit numeric
- ✓ **Units:** lb, kg (primary); oz, g (secondary)
- ✓ **Accuracy Class:** 3000 e
- ✓ **Resolution:** 120,000 dd industrial; 10,000 dd HB44
- ✓ **Excitation Voltage:** 5V DC
- ✓ **Largest output current:** 120 mA
- ✓ **Excitation circuit:** 5 VDC, 4 wire connections
- ✓ **Load Cell:** 6 load cells of 350 Ω maximum
- ✓ **Load Cell Excitation:** 5 \pm 0.5VDC
- ✓ **Zero stability error:** TKspn < \pm 6 ppm//K
- ✓ **Sensitivity (internal):** 0.3 μ V / d
- ✓ **Input voltage:** -30 to +30mV DC
- ✓ **Power:** 100~240VAC @ 50/60Hz
- ✓ **Power Consumption:** 5W @9VDC
- ✓ **Operating Temp.:** 14 °F to 104 °F (-10 °C to +40 °C)
- ✓ **Weight:** 4.3 lbs (1.95 kg)
- ✓ **Internal Resolution:** 24 bit A/D Sigma-Delta; 1,048,000 d
- ✓ **Display Resolution:** 120,000 dd industrial; 10,000 dd HB44
- ✓ **Display Increment:** Selectable 1, 2, 5, 10, 20, 50
- ✓ **Decimal Point:** Selectable 0, 1, 2, 3, 4 decimal places
- ✓ **Conversion Rate:** 12 samples/second typical
- ✓ **Analog Signal Input Range:** 1mV/V to 3mV/V
- ✓ **Analog Signal Sensitivity:** 0.1 uV/graduation (min)
- ✓ **Measurement Rate:** 0~15mV
- ✓ **Auto Zero Tracking:** 0 - 5 dd increments
- ✓ **Auto Zero Delay:** 0 - 3 second increments
- ✓ **Motion Detect:** 1 - 10 dd
- ✓ **Motion Delay:** 0 - 55 dd

OPTIONS / ACCESSORIES

- ✓ LED or LCD display option
- ✓ Wireless capability
- ✓ Thermal Ticket Printer
- ✓ Label Printer
- ✓ Zebra Label Printer
- ✓ Remote Display
- ✓ Stainless Steel Stand
- ✓ Painted Mild Steel Stand



LS-7561

MULTI-CHANNEL INDICATOR WITH BUILT-IN PRINTER



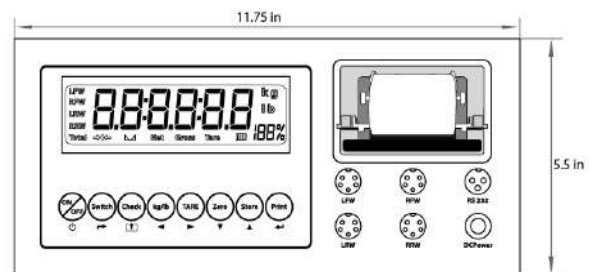
FEATURES

- ✓ Designed to work with static axle scales
- ✓ Gross weighing and accumulative weighing modes
- ✓ LCD display (size: 5.3in x 1.4in)
- ✓ Tare, Zero, Print, Save, Check, and Delete functions
- ✓ Kg and lb weighing units
- ✓ Built-in needle printer
- ✓ Different printing formats
- ✓ 6v/4.5Ah Battery and 9v/1.2A adapter
- ✓ Can connect to a secondary large display/scoreboard
- ✓ Can connect with up to 6 weighing pads
- ✓ Shows individual scale/pad percentage of the total weight
- ✓ Manual and automatic printing modes
- ✓ Date and time can be set easily
- ✓ Can connect to a PC or printer for data logging
- ✓ Wireless capability (optional)
- ✓ Industrial hard Carrying case
- ✓ Splash-proof keyboard and display
- ✓ 5 year warranty

OPTIONS / ACCESSORIES

- ✓ Data Logging Software
- ✓ Wireless capability
- ✓ Remote Display
- ✓ Stainless Steel Stand
- ✓ Painted Mild Steel Stand

DIMENSIONS



SPECIFICATIONS

- ✓ **Display:** LCD 1-inch x 6-digit numeric
- ✓ **Units:** lb, kg (primary)
- ✓ **Accuracy Class:** III
- ✓ **Excitation circuit:** VDC, 6 wire connections
- ✓ **Load Cell:** 6 load cells of 350 Ω maximum
- ✓ **Sensitivity (internal):** 0.5 μ V / d
- ✓ **Input voltage:** -30 to +30mV DC
- ✓ **Power:** 100~250VAC @ 50/60Hz
- ✓ **Operating Temp.:** 14 °F to 104 °F (-10 °C to +40 °C)
- ✓ **Weight:** 5.5 lbs
- ✓ **Display Increment:** Selectable 1, 2, 5, 10, 20, 50
- ✓ **Decimal Point:** Selectable 0, 1, 2, 3, 4 decimal places



LS-905

FULL NUMERIC KEYPAD INDICATOR



FEATURES

- ✓ Gross, Tare & Net weighing
- ✓ Piece counting
- ✓ Weigh system interface to Distributed control systems
- ✓ Bench, floor, tank, hopper
- ✓ Over/Under check weighing
- ✓ Material testing
- ✓ Dusty, chemical & washdown environment
- ✓ Eleven-button operation with full numeric keypad
- ✓ Stainless steel washdown enclosure with U-bracket mount
- ✓ Large bright Light Emitting Diode (LED) display
- ✓ Gross/Net, tare, piece count, check weighing, records memory
- ✓ Programmable print format
- ✓ Time and date
- ✓ 5 year warranty

SPECIFICATIONS

- ✓ **Display:** Red LED 0.8-inch x 6-digit numeric
- ✓ **Units:** lb, kg (primary); oz, g (secondary)
- ✓ **Enclosure:** Nema 4X stainless steel washdown
- ✓ **Keyboard:** 24 key audible with tactile feel membrane
- ✓ **Internal Resolution:** 24 bit A/D Sigma-Delta; 1,048,000 d
- ✓ **Display Resolution:** 120,000 dd industrial; 10,000 dd HB44
- ✓ **Display Increment:** Selectable 1, 2, 5, 10, 20, 50
- ✓ **Decimal Point:** Selectable 0, 1, 2, 3, 4 decimal places
- ✓ **Consecutive No.:** 1 to 999,999
- ✓ **Conversion Rate:** 12 samples/second typical
- ✓ **Signal Sensitivity:** 0.1 uV/granduation (min)
- ✓ **Signal Range:** 1mV/V to 3mV/V
- ✓ **Load Cell Excitation:** 5 ± 0.5VDC
- ✓ **Load Cell Power:** 12 x 350 Ω or 6 x 700 Ω load cells
- ✓ **Auto Zero Tracking:** 0 - 5 dd increments
- ✓ **Auto Zero Delay:** 0 - 3 second increments
- ✓ **Motion Detect:** 1 - 10 dd
- ✓ **Motion Delay:** 0 - 55 dd
- ✓ **Power:** 110/220VAC ± 10% @ 50/60Hz
- ✓ **Power Consumption:** 8W @ 115VAC
- ✓ **Operating Temp.:** 14 °F to 104 °F (-10 °C to +40 °C)
- ✓ **Weight:** 7 lbs (3.2 kg)
- ✓ **Dimensions:** 10.25" (L) x 4" (W) x 9.3" (H)



XK-3150-EX

EXPLOSION PROOF INDICATOR



EX Approval:
Class 1 Division 1

The XK-3150-EX indicator is Intrinsically Safe for use in dangerous areas. It comes with a Stainless Steel NEMA 4X enclosure and two power options, a removable rechargeable battery or an power adapter with a 47 ft long charging cord. AC Power Module can be located in a safe or hazardous area. This indicators can also be powered by a battery pack in the hazardous area that attaches to the back of the indicator, for applications where access to power outlets are an issue. Removable battery allows for the ability to recharge the battery in a safe environment. XK-3150-EX has multiple weighing units as well as accumulation, counting, gross, tare, zero and multiple hold functions. There are 3 weighing modes, Gross, Count and Accumulation and it is NTEP approved for 5,000 divisions. This indicator is user friendly with an easy to read 1" tall ultra bright screen and is perfect for chemical or gaseous weighing applications.



XK-3150-EX

EXPLOSION PROOF INDICATOR

SPECIFICATIONS

- ✓ **Display:** LCD 1.5 inch x 6-digit numeric
- ✓ **Units:** lb, kg (primary); oz, g (secondary)
- ✓ **Accuracy Class:** 5000 e
- ✓ **Resolution:** 120,000 dd industrial; 10,000 dd HB44
- ✓ **Excitation Voltage:** 5V DC
- ✓ **Largest output current:** 120 mA
- ✓ **Excitation circuit:** 5 VDC, 4 wire connections
- ✓ **Load Cell:** 6 load cells of 350 Ω maximum
- ✓ **Load Cell Excitation:** 5 \pm 0.5VDC
- ✓ **Zero stability error:** TKspn < \pm 6 ppm//K
- ✓ **Sensitivity (internal):** 0.3 μ V / d
- ✓ **Input voltage:** -30 to +30mV DC
- ✓ **Power:** 100~240VAC @ 50/60Hz
- ✓ **Power Consumption:** 5W @9VDC
- ✓ **Operating Temp.:** 14 °F to 104 °F (-10 °C to +40 °C)
- ✓ **Weight:** 4.3 lbs (1.95 kg)
- ✓ **Internal Resolution:** 24 bit A/D Sigma-Delta; 1,048,000 d
- ✓ **Display Resolution:** 120,000 dd industrial; 10,000 dd HB44
- ✓ **Display Increment:** Selectable 1, 2, 5, 10, 20, 50
- ✓ **Decimal Point:** Selectable 0, 1, 2, 3, 4 decimal places
- ✓ **Conversion Rate:** 12 samples / second typical
- ✓ **Analog Signal Input Range:** 1mV/V to 3mV/V
- ✓ **Analog Signal Sensitivity:** 0.1 μ V/graduation (min)
- ✓ **Measurement Rate:** 0~15mV
- ✓ **Auto Zero Tracking:** 0 - 5 dd increments
- ✓ **Auto Zero Delay:** 0 - 3 second increments
- ✓ **Motion Detect:** 1 - 10 dd
- ✓ **Motion Delay:** 0 - 55 dd

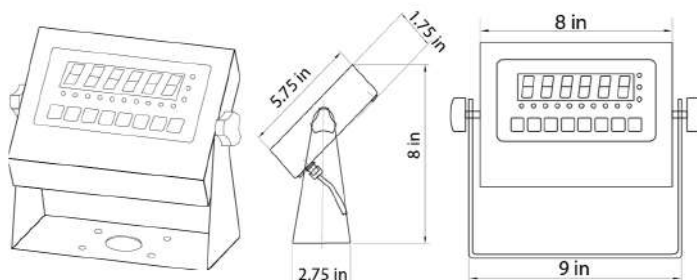
FEATURES

- ✓ EX Approval: Class 1 Division 1
- ✓ Stainless Steel casing
- ✓ AC adapter included, Battery included.
- ✓ Multiple weighing units: (lb/kg); (g/oz/lb:oz) available on LCD only
- ✓ Gross/Tare/Pre-Set Tare/Zero
- ✓ Multiple Hold functions
- ✓ Overload / Underload alarm
- ✓ Power saving mode
- ✓ Ability to modify gravity based on different geographical locations
- ✓ 100% manual zero range setting
- ✓ Automatic error warning alarm
- ✓ Splash-proof keyboard and display
- ✓ Connects to a remote display
- ✓ Connects to printer
- ✓ NTEP approved for 5,000 divisions
- ✓ Displays up to 50,000 graduations
- ✓ 1" LED or LCD display with backlight
- ✓ Mounting bracket and Hardware (included)
- ✓ Operates on 110V AC adapter (included)
- ✓ Full Duplex RS-232 Serial Port
- ✓ Drives up to 6 350 Ohms load cells
- ✓ 5 year warranty

OPTIONS / ACCESSORIES

- ✓ Relay & Analog output
- ✓ Stainless Steel Stand
- ✓ Painted Mild Steel Stand
- ✓ I/O Card to control external system

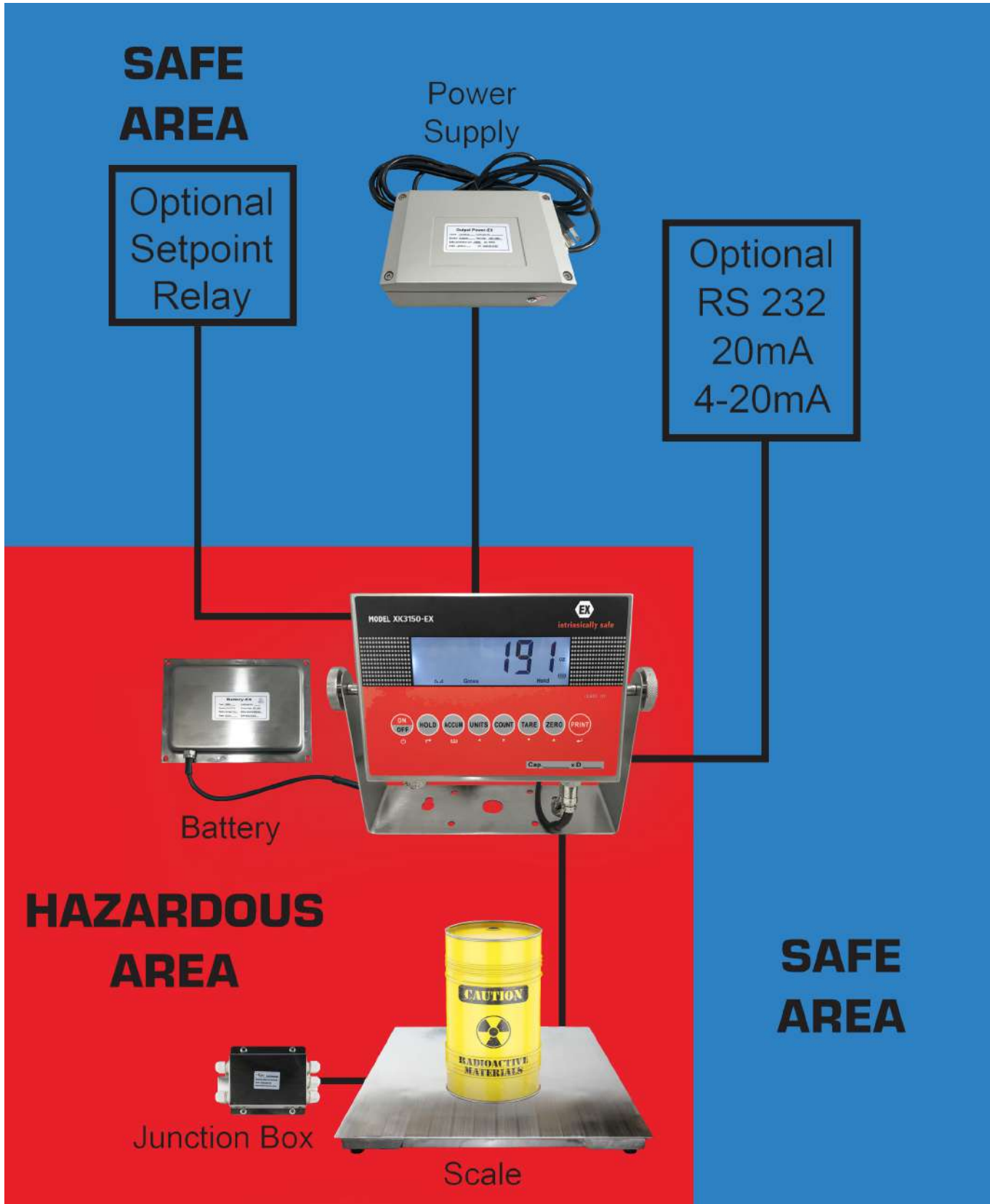
DIMENSIONS





XK-3150-EX

EXPLOSION PROOF INDICATOR



**SAFE
AREA**

Optional
Setpoint
Relay

Power
Supply

Optional
RS 232
20mA
4-20mA

Battery

**HAZARDOUS
AREA**

**SAFE
AREA**

Junction Box

Scale

Liberty Scales



Contact

Address:

P.O. Box # 800212
Santa Clarita, CA 91380

Email:

sales@libertyscales.com

Phone:

(661) 888-1919

Website:

www.libertyscales.com

