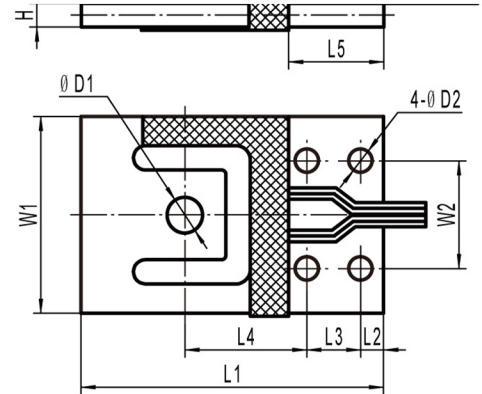
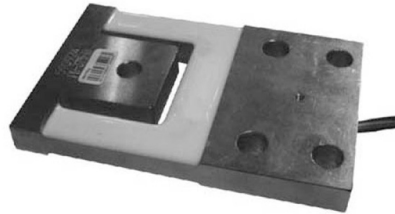


SINGLE POINT BEAM, ALUMINUM IP67



RATED CAPACITY	DIMENSIONS									
	L1	L2	L3	L4	L5	W1	W2	H	ΦD1	ΦD2
kg/mm										
3.75 kg	70.00	4.90	14.00	28.00	23.70	39.00	27.80	2.00	5.10	5.10
7.5 kg	70.00	4.90	14.00	28.00	23.70	39.00	27.80	2.50	5.10	5.10
15 kg	70.00	4.90	14.00	28.00	23.70	39.00	27.80	4.10	7.60	5.10
37.5 kg	76.20	6.00	15.00	29.30	27.00	44.50	30.00	4.80	7.60	6.60
75 kg	84.40	6.40	15.00	34.00	27.70	54.80	30.00	6.40	7.60	6.60
150 kg	107.30	7.80	22.90	45.90	38.40	69.90	44.50	7.90	9.10	8.10
375 kg	119.40	9.10	25.40	52.60	43.70	76.10	50.80	12.70	9.10	9.80
lb/inches										
10 lb	2.75	0.19	0.55	1.10	0.93	1.54	1.09	0.08	0.20	0.20
15 lb	2.75	0.19	0.55	1.10	0.93	1.54	1.09	0.10	0.20	0.20
30 lb	2.75	0.19	0.55	1.10	0.93	1.54	1.09	0.16	0.30	0.20
75 lb	3.00	0.24	0.59	1.15	1.06	1.75	1.18	0.19	0.30	0.26
150 lb	3.32	0.25	0.59	1.34	1.09	2.16	1.18	0.25	0.30	0.26
300 lb	4.22	0.31	0.90	1.81	1.51	2.75	1.75	0.31	0.36	0.32
750 lb	4.70	0.36	1.00	2.07	1.72	3.00	2.00	0.50	0.36	0.39

Rated Capacity:

3.75/7.5/15/37.5/75/150 /375 kg

Rated Output:

1.0±0.1mV/V

Non-linearity:

±0.02% F.S.

Hysteresis:

±0.02% F.S.

Repeatability:

±0.02% F.S.

Creep(30 minutes):

±0.03% F.S.

Temperature Effect on Span:

±0.0015% F.S./°C

Temperature Effect on Zero:

±0.0027% F.S./°C

Zero Balance:

±1.00% F.S.

Insulation Resistance:

>5000 MEGOHMS

Input Impedance:

1220±15Ω

Output Impedance:

1000±5Ω

Safe Overload:

150% F.S.

Destructive Load:

200% F.S.

Excitation Recommended:

10-15V AC/DC

Material/Finish:

Aluminum

Operation Temperature:

-10°C - +40°C (14°F - 104°F)

Cable Length:

Standard Cable
10ft/3m

Load Cell Wiring:

Red.....+Excitation
Black.....- Excitation
Green+Signal
White- Signal