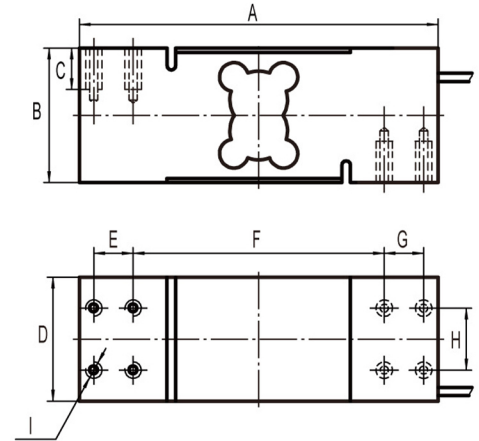


**SINGLE POINT BEAM, ALUMINUM IP67**



RATED CAPACITY	DIMENSIONS								
	A	B	C	D	E	F	G	H	I
<b>kg/mm</b>									
50-1,000 kg	174.00	64.00	20.00	60.00	19.00	122.00	19.00	30.00	8-M8
<b>lb/inches</b>									
100-2,000 lb	6.85	2.52	0.79	2.36	0.75	4.80	0.75	1.18	8-M8

**Rated Capacity:**  
50/60/75/100/150/200  
/250/300/350/500/600  
/635/750/800/1,000 kg

**Rated Output:**  
2.0±0.2mV/V

**Non-linearity:**  
±0.02% F.S.

**Hysteresis:**  
±0.02% F.S.

**Repeatability:**  
±0.02% F.S.

**Creep(30 minutes):**  
±0.03% F.S.

**Temperature Effect on Span:**  
±0.0015% F.S./°C

**Temperature Effect on Zero:**  
±0.0027% F.S./°C

**Zero Balance:**  
±1.00% F.S.

**Insulation Resistance:**  
> 5000 MEGOHMS

**Input Impedance:**  
410±10Ω

**Output Impedance:**  
350±3Ω

**Safe Overload:**  
150% F.S.

**Destructive Load:**  
200% F.S.

**Excitation Recommended:**  
10-15V AC/DC

**Material/Finish:**  
Aluminum

**Operation Temperature:**  
-10°C - +40°C (14°F - 104°F)

**Cable Length:**  
Standard Cable  
10ft/3m

**Load Cell Wiring:**  
Red.....+Excitation  
Black.....- Excitation  
Green .....+Signal  
White ..... - Signal

**Max Platform Size:**  
600mm x 600mm