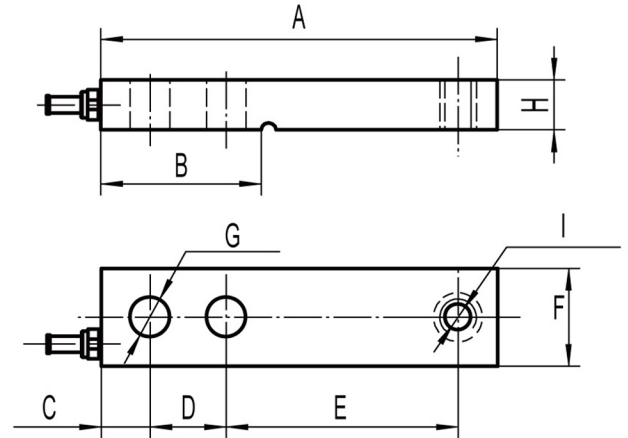


**SINGLE ENDED BEAM (LOW PROFILE)
ALLOY STEEL IP67**



RATED CAPACITY	DIMENSIONS								
	A	B	C	D	E	F	G	H	I
t/mm									
0.1-0.5 t	128.50	51.20	14.20	25.40	76.20	31.80	Ø13	15.90	M12-6H
0.75-1 t	128.50	51.20	14.20	25.40	76.20	31.80	Ø13	19.10	M12-6H
1.5-2 t	128.50	51.20	14.20	25.40	76.20	31.80	Ø13	25.40	M12-6H
lb/inch									
250-1K lb	5.06	2.02	0.56	1.00	3.00	1.25	Ø0.51	0.63	1/2-20UNF
1.5K-2K lb	5.06	2.02	0.56	1.00	3.00	1.25	Ø0.51	0.75	1/2-20UNF
3K-4K lb	5.06	2.02	0.56	1.00	3.00	1.25	Ø0.51	1.00	1/2-20UNF

Rated Capacity:
0.1/0.2/0.3/0.5/0.75
/1/1.5/2 t

Rated Output:
2.0mV/V

Non-linearity:
±0.03% F.S.

Hysteresis:
±0.03% F.S.

Repeatability:
±0.02% F.S.

Temperature Effect on Span:
±0.0015% F.S./°C

Temperature Effect on Zero:
±0.0027% F.S./°C

Zero Balance:

±1.00% F.S.

Insulation Resistance:

>5000 MEGOHMS

Compensated Temperature Range:

-10°C - +40°C(14°F-104°F)

Creep(30 minutes):
±0.03% F.S.

Input Resistance:
385±20Ω

Output Resistance:
350±3Ω

Safe Overload:

150% F.S.

Excitation Recommended:

10-20V AC/DC

Material/Finish:
Alloy Steel

Cable Length:
Standard Cable
20ft/6m

Load Cell Wiring:

Red.....+Excitation
Black.....- Excitation
Green.....+Signal
White.....- Signal