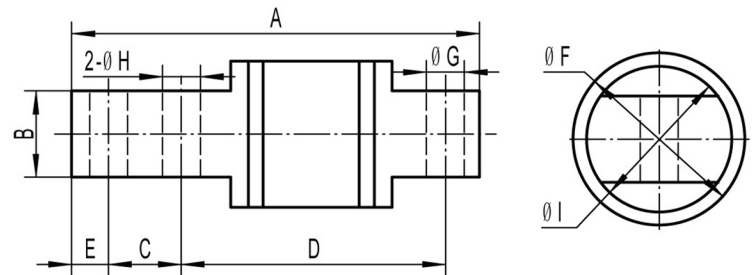


SINGLE ENDED BEAM ALLOY STEEL IP67



Interchangeable Products

- ◆ Artech **50210**
- ◆ Revere **5503**
- ◆ Revere **9503**
- ◆ Rice Lake **RL50210**
- ◆ Rice Lake **RL60040SST**
- ◆ Sensortronics **60040**
- ◆ Coti Global Sensors **CG-60040**

RATED CAPACITY	DIMENSIONS									
	A	B	C	D	E	F	G	H	I	
lb/inches										
25-500 lb	2.81	0.62	0.50	1.81	0.25	1.30	0.26	0.26	1.00	
kg/mm										
11.34-226.8 kg	71.37	15.75	12.7	45.97	6.35	33.02	6.60	6.60	25.40	

Rated Capacity:

25/50/75/100/150
/250/500 lb

Rated Output:

3.0mV/V

Non-linearity:

±0.03% F.S.

Hysteresis:

±0.03% F.S.

Repeatability:

±0.02% F.S.

Temperature Effect on Span:

±0.0015% F.S./°C

Temperature Effect on Zero:

±0.0027% F.S./°C

Zero Balance:

±1.00% F.S.

Insulation Resistance:

> 5000 MEGOHMS

Compensated Temperature Range:

-10°C - +40°C (14°F-104°F)

Creep(30 minutes):

±0.03% F.S.

Input Resistance:

385±20Ω

Output Resistance:

350±3Ω

Safe Overload:

150% F.S.

Excitation Recommended:

10-20V AC/DC

Material/Finish:

Alloy Steel

Cable Length:

Standard Cable
20ft/6m

Load Cell Wiring:

Red.....+Excitation
Black.....- Excitation
Green+Signal
White - Signal