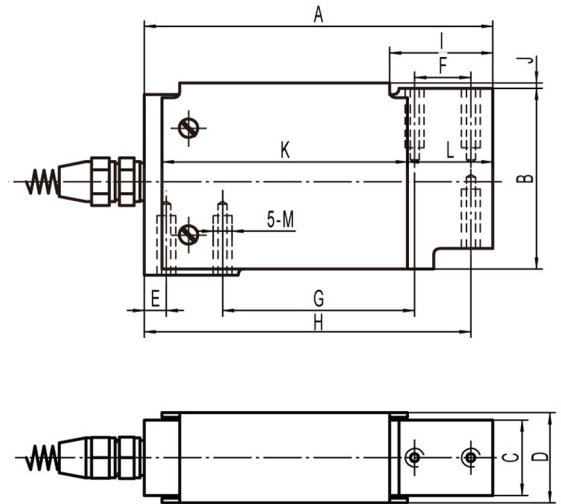
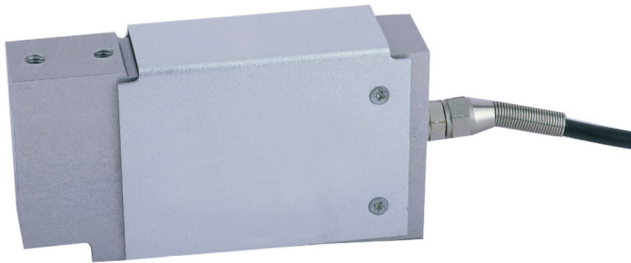


**SINGLE POINT BEAM, ALUMINUM IP67**



**Interchangeable Products**

- ◆ Rice Lake **RL1010**
- ◆ Tedea **1010**
- ◆ Coti Global Sensors **CG-1010**

RATED CAPACITY	DIMENSIONS												
	A	B	C	D	E	F	G	H	I	J	K	L	M
<b>kg/mm</b>													
3-90 kg	118.11	62.99	25.40	33.53	7.62	19.05	64.77	110.50	34.04	3.05	80.01	24.38	1/4-20UNF X 0.50dp
<b>lb/inches</b>													
5-200 lb	4.65	2.48	1.00	1.32	0.30	0.75	2.55	4.35	1.34	0.12	3.15	0.96	1/4-20UNF X 0.50dp

**Rated Capacity:**  
3/5/7/10/15/20/30/50 /90kg

**Rated Output:**  
2.0±0.2mV/V

**Non-linearity:**  
±0.03% F.S.

**Hysteresis:**  
±0.02% F.S.

**Repeatability:**  
±0.02% F.S.

**Creep(30 minutes):**  
±0.03% F.S.

**Temperature Effect on Span:**  
±0.0015% F.S./°C

**Temperature Effect on Zero:**  
±0.0027% F.S./°C

**Zero Balance:**  
±1.00% F.S.

**Insulation Resistance:**  
> 5000 MEGOHMS

**Input Impedance:**  
410±10Ω

**Output Impedance:**  
350±3Ω

**Safe Overload:**  
150% F.S.

**Destructive Load:**  
200% F.S.

**Excitation Recommended:**  
10-20V AC/DC

**Material/Finish:**  
Aluminum

**Operation Temperature:**  
-10°C - +40°C (14°F - 104°F)

**Cable Length:**  
Standard Cable  
3-90kg: 10ft/3m

**Load Cell Wiring:**  
Red.....+Excitation  
Black.....- Excitation  
Green.....+Signal  
White.....- Signal

**Max Platform Size:**  
400mm x 400mm