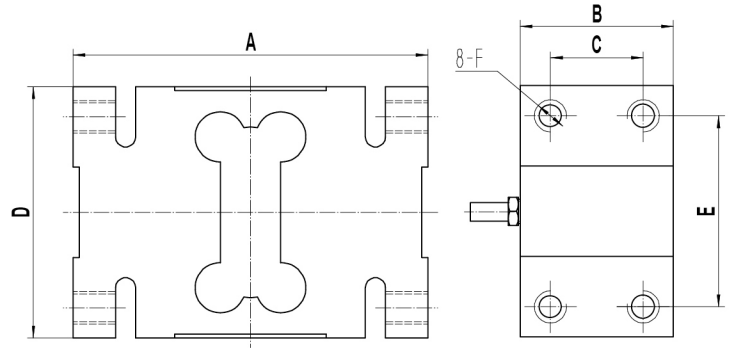
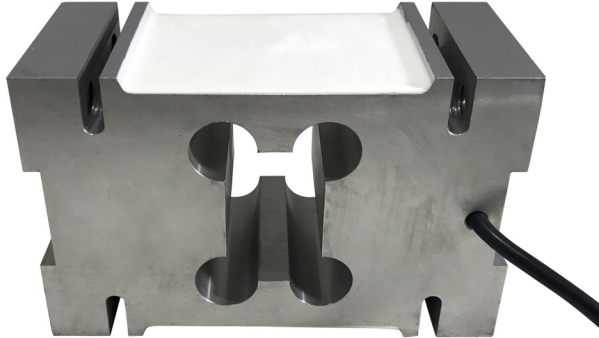


SINGLE POINT BEAM, ALUMINUM IP67



PART#	CAPACITY
LS-306-50	50 kg
LS-306-100	100 kg
LS-306-150	150 kg
LS-306-200	200 kg
LS-306-250	250 kg
LS-306-500	500 kg
LS-306-635	750 kg
LS-306-1K	1,000 kg
LS-306-2K	2,000 kg

RATED CAPACITY	DIMENSIONS					
	A	B	C	D	E	F
lb/inches						
110-440 lb	5.75	1.73	0.95	2.96	1.97	M12
550-1,650 lb	6.15	2.36	1.42	3.74	2.76	M12
2,200-4,400 lb	6.93	2.99	1.81	4.93	3.74	M16
kg/mm						
50-200 kg	146.00	44.00	24.00	75.00	50.00	M12
250-750 kg	156.00	60.00	36.00	95.00	70.00	M12
1,000-2,000 kg	176.00	76.00	46.00	125.00	95.00	M16

INTERCHANGEABLE PRODUCTS

Mettler Toledo: **IL**

SPECIFICATIONS

<p>Rated Capacity:</p> <p>kg: 50/100/150/200/250 500/750/1000/2000</p>	<p>Repeatability:</p> <p>±0.02% F.S.</p>	<p>Input Impedance:</p> <p>410±10Ω</p>	<p>Material/Finish:</p> <p>Aluminum</p>
<p>Rated Output:</p> <p>2.0m±0.2mV/V</p>	<p>Creep (30 minutes):</p> <p>±0.16% F.S.</p>	<p>Output Impedance:</p> <p>350±3Ω</p>	<p>Operation Temperature:</p> <p>-10°C -+ 40°C (14°F - 104°F)</p>
<p>Non-linearity:</p> <p>±0.02% F.S.</p>	<p>Temperature Effect on Span:</p> <p>±0.0015% F.S./C</p>	<p>Safe Overload:</p> <p>150% F.S</p>	<p>Cable Length:</p> <p>Standard Cable - 10ft/3m</p>
<p>Max Platform Size:</p> <p>800mm x 800mm</p>	<p>Temperature Effect on Zero:</p> <p>±0.0027% F.S./C</p>	<p>Destructive Load:</p> <p>200% F.S</p>	<p>Load Cell Wiring:</p> <p>Red..... +Excitation Black.....-Excitation Green.....+Signal White.....-Signal</p>
<p>Hysteresis:</p> <p>±0.02% F.S.</p>	<p>Zero Balance:</p> <p>±1.00% F.S./C</p>	<p>Excitation Recommended:</p> <p>4-12V AC/DC</p>	
	<p>Insulation Resistance:</p> <p>>5000 MEGOHMS</p>		