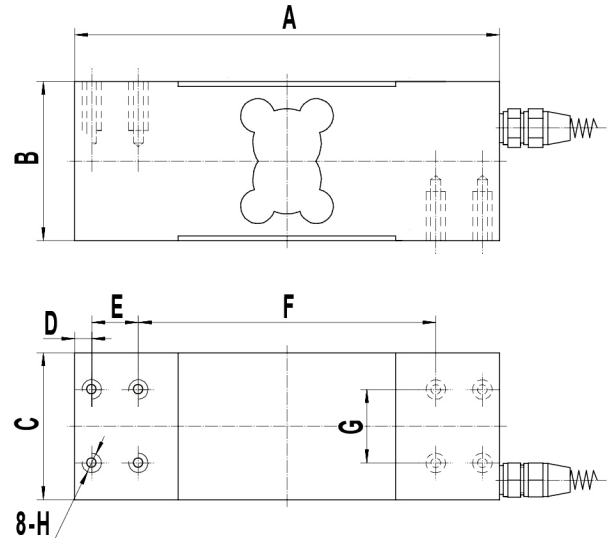
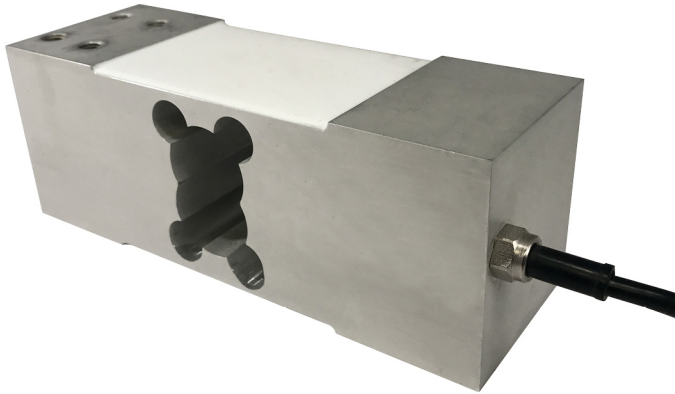


**SINGLE POINT BEAM, ALUMINUM IP67**



PART#	CAPACITY
LS-305-50	50 kg
LS-305-75	75 kg
LS-305-100	100 kg
LS-305-150	150 kg
LS-305-200	200 kg
LS-305-250	250 kg
LS-305-300	300 kg
LS-305-500	500 kg
LS-305-635	635 kg
LS-305-800	800 kg

RATED CAPACITY	DIMENSIONS							
	A	B	C	D	E	F	G	H
<b>lb/inches</b>								
110-1,650 lb	6.85	2.56	2.36	0.28	0.75	4.80	1.18	M8 x 1.25 x 0.79dp
<b>kg/mm</b>								
50-635 kg	173.99	65.02	59.94	7.11	19.05	121.92	29.97	M8 x 1.25 x 0.79dp

**INTERCHANGEABLE PRODUCTS**

HBM: **PW24**

Tedea: **1263**

Transcell: **FAV**

Coti Global Sensors: **CG-50-2**

**SPECIFICATIONS**

**Rated Capacity:**

kg:50/75/100/150/200/250/  
300/500/635/800

**Rated Output:**

2.0m±0.2mV/V

**Non-linearity:**

±0.02% F.S.

**Max Platform Size:**

600mm x 600mm

**Hysteresis:**

±0.02% F.S.

**Repeatability:**

±0.02% F.S.

**Creep (30 minutes):**

±0.03% F.S.

**Temperature Effect on Span:**

±0.0015% F.S./C

**Temperature Effect on Zero:**

±0.0027% F.S./C

**Zero Balance:**

±1.00% F.S./C

**Insulation Resistance:**

>5000 MEGOHMS

**Input Impedance:**

410±10Ω

**Output Impedance:**

350±3Ω

**Safe Overload:**

150% F.S

**Destructive Load:**

200% F.S

**Excitation Recommended:**

10-20V AC/DC

**Material/Finish:**

Aluminum

**Operation Temperature:**

-10°C - + 40°C (14°F - 104°F)

**Cable Length:**

Standard Cable - 10ft/3m

**Load Cell Wiring:**

Red..... +Excitation  
Black.....-Excitation  
Green.....+Signal  
White.....-Signal

**Max Platform Size:**

600mm x 600mm