

PART#	CAPACITY
LS-301-3	3 kg
LS-301-5	5 kg
LS-301-7	7 kg
LS-301-10	10 kg
LS-301-15	15 kg
LS-301-20	20 kg
LS-301-30	30 kg
LS-301-50	50 kg
LS-301-75	75 kg
LS-301-100	100 kg

RATED CAPACITY	DIMENSIONS										
	A	B	C	D	E	F	G	H	I	J	
<b>lb/inches</b>											
7-66 lb	5.91	1.58	0.79	0.24	0.75	3.94	1.34	1/4-20UNF x 0.44 dp	0.37	0.75	
110-220 lb	5.91	1.58	0.99	0.24	0.75	3.94	1.34	1/4-20UNF x 0.44 dp	0.37	0.75	
<b>kg/mm</b>											
3-30 kg	150.11	40.13	20.01	6.10	19.05	100.08	34.04	1/4-20UNF x 0.44 dp	9.40	19.05	
50-100 kg	150.11	40.13	25.14	6.10	19.05	100.08	34.04	1/4-20UNF x 0.44 dp	9.40	19.05	

**SPECIFICATIONS**

**Rated Capacity:**

kg: 3/5/7/10/15/20/30/50/75/100

**Rated Output:**

2.0±0.2mV/V

**Non-linearity:**

±0.02% F.S.

**Hysteresis:**

±0.02% F.S.

**Repeatability:**

±0.02% F.S.

**Creep (30 minutes):**

±0.03% F.S.

**Temperature Effect on Span:**

±0.0015% F.S./C

**Temperature Effect on Zero:**

±0.0027% F.S./C

**Zero Balance:**

±1.00% F.S./C

**Insulation Resistance:**

>5000 MEGOHMS

**Input Impedance:**

410±10Ω

**Output Impedance:**

350±3Ω

**Safe Overload:**

150% F.S.

**Destructive Load:**

200% F.S.

**Excitation Recommended:**

4-12V AC/DC

**Material/Finish:**

Aluminum

**Operation Temperature:**

-10°C - + 40°C (14°F - 104°F)

**Cable Length:**

Standard Cable - 20ft/6m

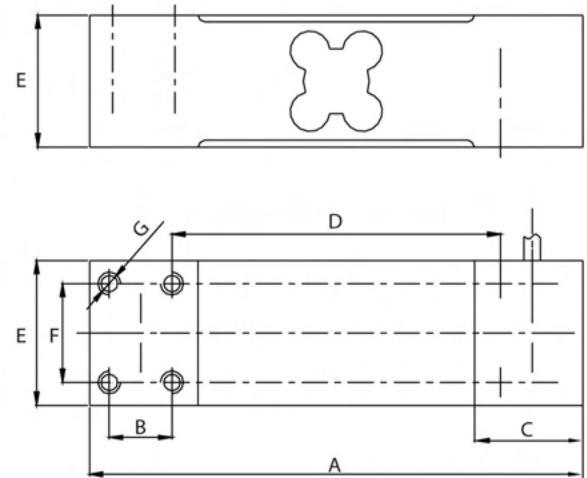
**Load Cell Wiring:**

Red..... +Excitation  
Black.....-Excitation  
Green.....+Signal  
White.....-Signal

**INTERCHANGEABLE PRODUCTS**

Cardinal: TSP

**SINGLE POINT BEAM, ALUMINUM IP67**



RATED CAPACITY	DIMENSIONS						
	A	B	C	D	E	F	G
<b>kg/mm</b>							
50-350 kg	150	19	33	100	44	30	M8
<b>lb/inches</b>							
100-700 lb	5.91	0.75	2.05	3.94	1.73	1.18	M8

**Rated Capacity:**

50/100/150/200/250/  
300/350 kg

**Rated Output:**

2.0±0.2mV/V

**Non-linearity:**

±0.02% F.S.

**Hysteresis:**

±0.02% F.S.

**Repeatability:**

±0.02% F.S.

**Temperature Effect on Span:**

±0.0015% F.S./C

**Temperature Effect on Zero:**

±0.0027% F.S./C

**Zero Balance:**

±1.00% F.S.

**Insulation Resistance:**

> 5000 MEGOHMS

**Compensated Temperature Range:**

-10°C - +40°C (14°F-104°F)

**Creep(30 minutes):**

±0.016% F.S.

**Input Resistance:**

410±10Ω

**Output Resistance:**

352±2Ω

**Safe Overload:**

150% F.S.

**Excitation Recommended:**

4-12V AC/DC

**Material/Finish:**

Aluminum

**Cable Length:**

Standard cable

10ft/3m

**Load Cell Wiring:**

Red.....+Excitation

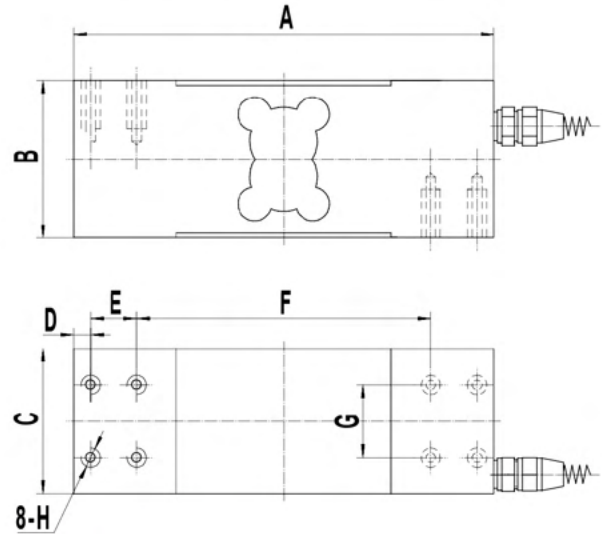
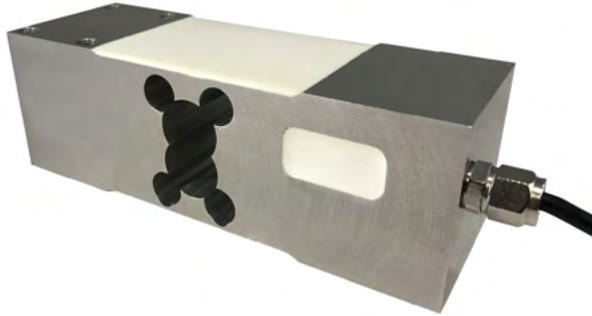
Black.....- Excitation

Green .....+Signal

White .....- Signal

**Max Platform Size:**

400mm x 400mm



PART#	CAPACITY
LS-304-50	50 kg
LS-304-75	75 kg
LS-304-100	100 kg
LS-304-150	150 kg
LS-304-200	200 kg
LS-304-250	250 kg
LS-304-300	300 kg
LS-304-500	500 kg
LS-304-635	635 kg
LS-304-1000	1000 kg

RATED CAPACITY	DIMENSIONS							
	A	B	C	D	E	F	G	H
<b>lb/inches</b>								
110-1,650 lb	7.40	2.45	2.49	0.22	1.38	4.21	1.97	5/16-18UNFx0.62dp
<b>kg/mm</b>								
50-635 kg	187.96	62.23	63.25	5.59	35.05	106.93	50.04	5/16-18UNFx0.62dp

**INTERCHANGEABLE PRODUCTS**

- HBM: **PW16**
- Rice Lake: **RL1260**
- Tedea: **1260S**
- Coti Global Sensors: **CG-50-1**
- Mettler Toledo: **MOP-1260**
- Rice Lake: **RLPWM16**
- Tedea: **1260**

**SPECIFICATIONS**

**Rated Capacity:**

kg:50/75/100/150/200/250/300/500/635/1000

**Rated Output:**

2.0mV/V±10%

**Non-linearity:**

±0.02% F.S.

**Max Platform Size:**

600mm x 600mm

**Hysteresis:**

±0.02% F.S.

**Repeatability:**

±0.02% F.S.

**Creep (30 minutes):**

±0.03% F.S.

**Temperature Effect on Span:**

±0.0015% F.S./C

**Temperature Effect on Zero:**

±0.0027% F.S./C

**Zero Balance:**

±1.00% F.S./C

**Insulation Resistance:**

>5000 MEGOHMS

**Input Impedance:**

410±10Ω

**Output Impedance:**

350±3Ω

**Safe Overload:**

150% F.S

**Destructive Load:**

200% F.S

**Excitation Recommended:**

10-20V AC/DC

**Material/Finish:**

Aluminum

**Operation Temperature:**

-10°C - + 40°C (14°F - 104°F)

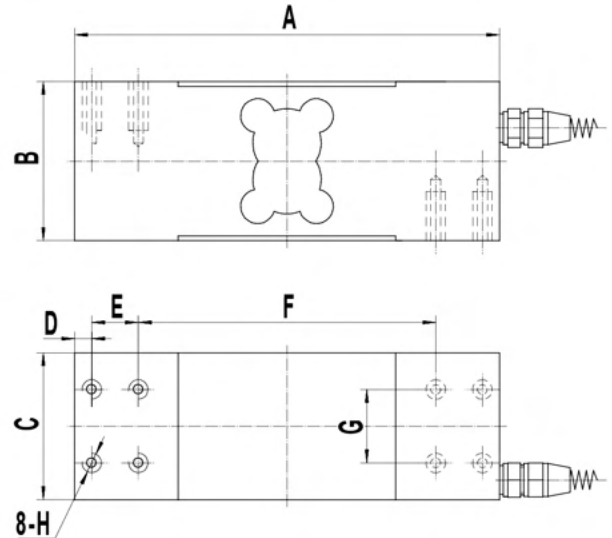
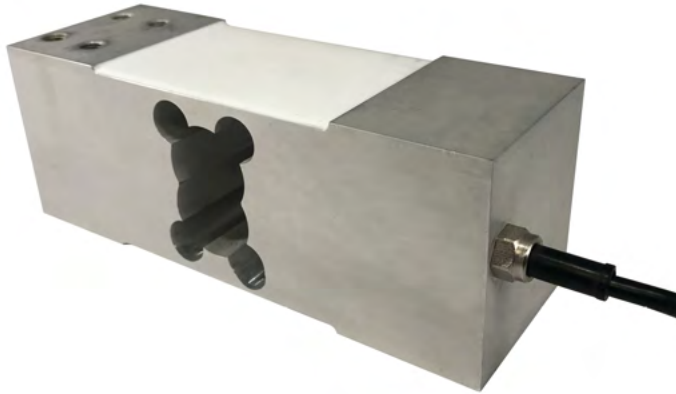
**Cable Length:**

Standard Cable - 10ft/3m

**Load Cell Wiring:**

Red..... +Excitation  
Black.....-Excitation  
Green.....+Signal  
White.....-Signal

**SINGLE POINT BEAM, ALUMINUM IP67**



PART#	CAPACITY
LS-305-50	50 kg
LS-305-75	75 kg
LS-305-100	100 kg
LS-305-150	150 kg
LS-305-200	200 kg
LS-305-250	250 kg
LS-305-300	300 kg
LS-305-500	500 kg
LS-305-635	635 kg
LS-305-800	800 kg

RATED CAPACITY	DIMENSIONS							
	A	B	C	D	E	F	G	H
<b>lb/inches</b>								
110-1,650 lb	6.85	2.56	2.36	0.28	0.75	4.80	1.18	M8 x 1.25 x 0.79dp
<b>kg/mm</b>								
50-635 kg	173.99	65.02	59.94	7.11	19.05	121.92	29.97	M8 x 1.25 x 0.79dp

**INTERCHANGEABLE PRODUCTS**

HBM: **PW24**      Tedeia: **1263**  
Transcell: **FAV**      Coti Global Sensors: **CG-50-2**

**SPECIFICATIONS**

**Rated Capacity:**

kg:50/75/100/150/200/250/  
300/500/635/800

**Rated Output:**

2.0m±0.2mV/V

**Non-linearity:**

±0.02% F.S.

**Max Platform Size:**

600mm x 600mm

**Hysteresis:**

±0.02% F.S.

**Repeatability:**

±0.02% F.S.

**Creep (30 minutes):**

±0.03% F.S.

**Temperature Effect on Span:**

±0.0015% F.S./C

**Temperature Effect on Zero:**

±0.0027% F.S./C

**Zero Balance:**

±1.00% F.S./C

**Insulation Resistance:**

>5000 MEGOHMS

**Input Impedance:**

410±10Ω

**Output Impedance:**

350±3Ω

**Safe Overload:**

150% F.S

**Destructive Load:**

200% F.S

**Excitation Recommended:**

10-20V AC/DC

**Material/Finish:**

Aluminum

**Operation Temperature:**

-10°C - + 40°C (14°F - 104°F)

**Cable Length:**

Standard Cable - 10ft/3m

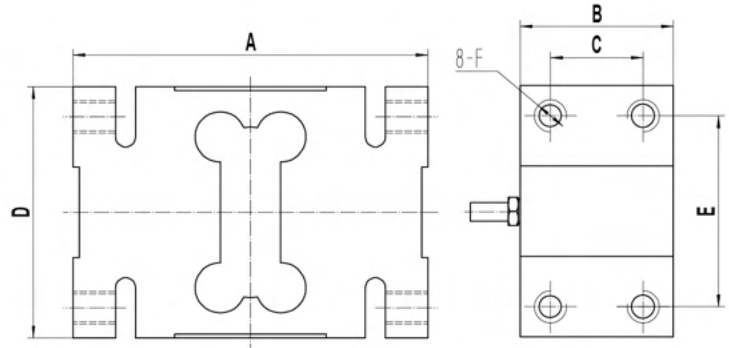
**Load Cell Wiring:**

Red..... +Excitation  
Black.....-Excitation  
Green.....+Signal  
White.....-Signal

**Max Platform Size:**

600mm x 600mm

**SINGLE POINT BEAM, ALUMINUM IP67**



PART#	CAPACITY
LS-306-50	50 kg
LS-306-100	100 kg
LS-306-150	150 kg
LS-306-200	200 kg
LS-306-250	250 kg
LS-306-500	500 kg
LS-306-635	750 kg
LS-306-1K	1,000 kg
LS-306-2K	2,000 kg

RATED CAPACITY	DIMENSIONS					
	A	B	C	D	E	F
<b>lb/inches</b>						
110-440 lb	5.75	1.73	0.95	2.96	1.97	M12
550-1,650 lb	6.15	2.36	1.42	3.74	2.76	M12
2,200-4,400 lb	6.93	2.99	1.81	4.93	3.74	M16
<b>kg/mm</b>						
50-200 kg	146.00	44.00	24.00	75.00	50.00	M12
250-750 kg	156.00	60.00	36.00	95.00	70.00	M12
1,000-2,000 kg	176.00	76.00	46.00	125.00	95.00	M16

**INTERCHANGEABLE PRODUCTS**

Mettler Toledo: **IL**

**SPECIFICATIONS**

**Rated Capacity:**

kg: 50/100/150/200/250  
500/750/1000/2000

**Rated Output:**

2.0m±0.2mV/V

**Non-linearity:**

±0.02% F.S.

**Max Platform Size:**

800mm x 800mm

**Hysteresis:**

±0.02% F.S.

**Repeatability:**

±0.02% F.S.

**Creep (30 minutes):**

±0.16% F.S.

**Temperature Effect on Span:**

±0.0015% F.S./C

**Temperature Effect on Zero:**

±0.0027% F.S./C

**Zero Balance:**

±1.00% F.S./C

**Insulation Resistance:**

>5000 MEGOHMS

**Input Impedance:**

410±10Ω

**Output Impedance:**

350±3Ω

**Safe Overload:**

150% F.S.

**Destructive Load:**

200% F.S.

**Excitation Recommended:**

4-12V AC/DC

**Material/Finish:**

Aluminum

**Operation Temperature:**

-10°C -+ 40°C (14°F - 104°F)

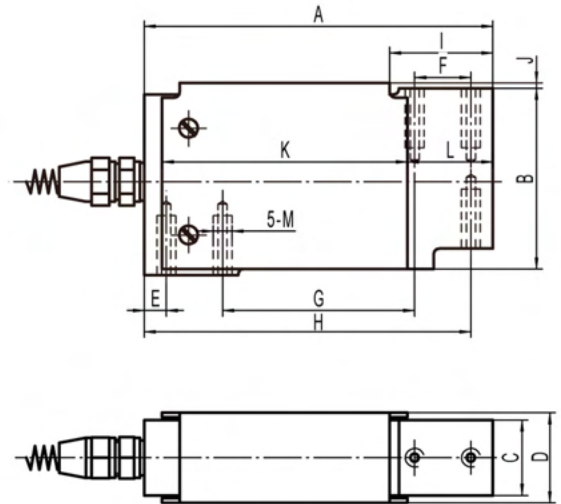
**Cable Length:**

Standard Cable - 10ft/3m

**Load Cell Wiring:**

Red..... +Excitation  
Black.....-Excitation  
Green.....+Signal  
White.....-Signal

**SINGLE POINT BEAM, ALUMINUM IP67**



**Interchangeable Products**

- ◆ Rice Lake **RL1010**
- ◆ Tedea **1010**
- ◆ Coti Global Sensors **CG-1010**

RATED CAPACITY	DIMENSIONS												
	A	B	C	D	E	F	G	H	I	J	K	L	M
<b>kg/mm</b>													
3-90 kg	118.11	62.99	25.40	33.53	7.62	19.05	64.77	110.50	34.04	3.05	80.01	24.38	1/4-20UNF X 0.50dp
<b>lb/inches</b>													
5-200 lb	4.65	2.48	1.00	1.32	0.30	0.75	2.55	4.35	1.34	0.12	3.15	0.96	1/4-20UNF X 0.50dp

**Rated Capacity:**  
3/5/7/10/15/20/30/50 /90kg

**Rated Output:**  
2.0±0.2mV/V

**Non-linearity:**  
±0.03% F.S.

**Hysteresis:**  
±0.02% F.S.

**Repeatability:**  
±0.02% F.S.

**Creep(30 minutes):**  
±0.03% F.S.

**Temperature Effect on Span:**  
±0.0015% F.S./°C

**Temperature Effect on Zero:**  
±0.0027% F.S./°C

**Zero Balance:**  
±1.00% F.S.

**Insulation Resistance:**  
> 5000 MEGOHMS

**Input Impedance:**  
410±10Ω

**Output Impedance:**  
350±3Ω

**Safe Overload:**  
150% F.S.

**Destructive Load:**  
200% F.S.

**Excitation Recommended:**  
10-20V AC/DC

**Material/Finish:**  
Aluminum

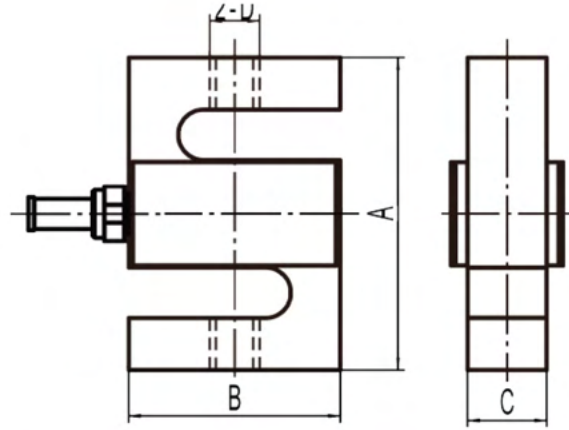
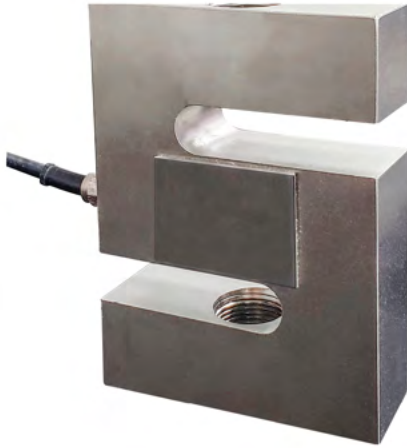
**Operation Temperature:**  
-10°C - +40°C (14°F - 104°F)

**Cable Length:**  
Standard Cable  
3-90kg: 10ft/3m

**Load Cell Wiring:**  
Red.....+Excitation  
Black.....- Excitation  
Green.....+Signal  
White.....- Signal

**Max Platform Size:**  
400mm x 400mm

**S-BEAM, NICKEL PLATED ALLOY STEEL IP67**



PART#	CAPACITY
LS-312-0.05	50 lbs
LS-312-0.1	100 lbs
LS-312-0.15	150 lbs
LS-312-0.2	200 lbs
LS-312-0.25	250 lbs
LS-312-0.3	300 lbs
LS-312-0.5	500 lbs
LS-312-0.75	750 lbs
LS-312-1	1,000 lbs
LS-312-1.5	1,500 lbs
LS-312-2	2,000 lbs
LS-312-2.5	2,500 lbs
LS-312-3	3,000 lbs
LS-312-5	5,000 lbs
LS-312-10	10,000 lbs
LS-312-15	15,000 lbs
LS-312-20	20,000 lbs
LS-312-40	40,000 lbs

RATED CAPACITY	DIMENSIONS				RATED CAPACITY	DIMENSIONS			
	A	B	C	D		A	B	C	D
<b>lb/inches</b>					<b>kg/mm</b>				
50-200	2.50	2.00	0.75	1/4-28UNF-2B	25	63.50	50.80	12.70	M6
250-300	2.50	2.00	0.75	3/8-24UNF-2B	50-70	63.50	50.80	12.70	M6
500-1,500	2.50	2.00	1.00	1/2-20UNF-2B	100-700	63.50	50.80	19.05	M12
2K-3K	3.00	2.00	1.00	1/2-20UNF-2B	1,000-1,500	76.20	50.80	25.40	M12
5K-10K	4.25	3.00	1.25	3/4-16UNF-2B	2,000-5,000	107.95	76.20	25.40	M20x1.5
15K	5.50	4.00	1.25	1-14UNF-2B	7,000	139.70	101.60	31.75	M20x1.5
20K	7.00	5.00	2.00	1 1/4UNF-12UNF-2B	10,000	177.80	127.00	50.80	M30x2
40K	7.50	5.50	2.50	1 1/2UNF-12UNF-2B	20,000	190.50	139.70	63.50	M38

**INTERCHANGEABLE PRODUCTS**

Celtron: **STC**  
 Sensortronics: **60001**  
 Rice Lake: **RL20001**  
 Artech: **20210**  
 Coti Global Sensors: **CGSB**

**WEIGHING MODULE AVAILABLE**

**LS-312-TM**

**SPECIFICATIONS**

**Rated Capacity:**

lb: 50/100/150/200/250/300/  
 500/750/1K/1.5K/2K/2.5K/3K/  
 5K/10K/15K/20K/40K

**Rated Output:**

3.0mV/V

**Non-linearity:**

±0.03% F.S.

**Hysteresis:**

±0.02% F.S.

**Repeatability:**

±0.02% F.S.

**Creep (30 minutes):**

±0.03% F.S.

**Temperature Effect on Span:**

±0.0015% F.S./C

**Temperature Effect on Zero:**

±0.0027% F.S./C

**Zero Balance:**

±1.00% F.S./C

**Insulation Resistance:**

>5000 MEGOHMS

**Input Resistance:**

350±10Ω

**Output Resistance:**

350±5Ω

**Safe Overload:**

150% F.S.

**Destructive Overload:**

200% F.S.

**Excitation Recommended:**

10-20V AC/DC

**Operation Temperature:**

-10°C - + 40°C (14°F - 104°F)

**Material/Finish:**

Alloy Steel

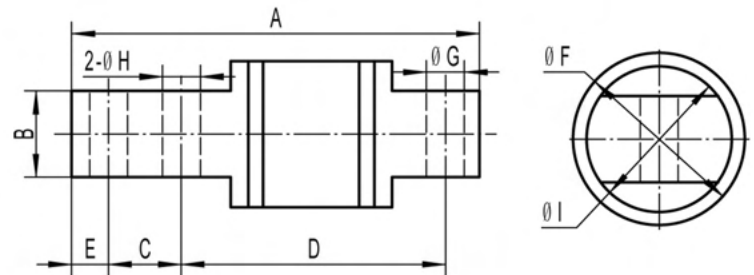
**Cable Length:**

STANDARD  
 50-10K lbs: 20ft/6m  
 15K-40K lbs: 40ft/12m

**Load Cell Wiring:**

Red..... +Excitation  
 Black.....-Excitation  
 Green.....+Signal  
 White.....-Signal

# SINGLE ENDED BEAM ALLOY STEEL IP67



## Interchangeable Products

- ◆ Artech **50210**
- ◆ Revere **5503**
- ◆ Revere **9503**
- ◆ Rice Lake **RL50210**
- ◆ Rice Lake **RL60040SST**
- ◆ Sensortronics **60040**
- ◆ Coti Global Sensors **CG-60040**

RATED CAPACITY	DIMENSIONS									
	A	B	C	D	E	F	G	H	I	
<b>lb/inches</b>										
25-500 lb	2.81	0.62	0.50	1.81	0.25	1.30	0.26	0.26	1.00	
<b>kg/mm</b>										
11.34-226.8 kg	71.37	15.75	12.7	45.97	6.35	33.02	6.60	6.60	25.40	

**Rated Capacity:**

25/50/75/100/150  
/250/500 lb

**Rated Output:**

3.0mV/V

**Non-linearity:**

±0.03% F.S.

**Hysteresis:**

±0.03% F.S.

**Repeatability:**

±0.02% F.S.

**Temperature Effect on Span:**

±0.0015% F.S./°C

**Temperature Effect on Zero:**

±0.0027% F.S./°C

**Zero Balance:**

±1.00% F.S.

**Insulation Resistance:**

>5000 MEGOHMS

**Compensated Temperature Range:**

-10°C - +40°C(14°F-104°F)

**Creep(30 minutes):**

±0.03% F.S.

**Input Resistance:**

385±20Ω

**Output Resistance:**

350±3Ω

**Safe Overload:**

150% F.S.

**Excitation Recommended:**

10-20V AC/DC

**Material/Finish:**

Alloy Steel

**Cable Length:**

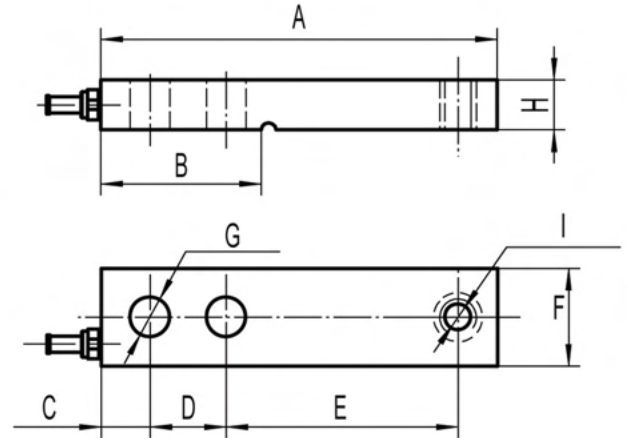
Standard Cable  
20ft/6m

**Load Cell Wiring:**

Red.....+Excitation  
Black.....- Excitation  
Green .....+Signal  
White ..... - Signal



**SINGLE ENDED BEAM (LOW PROFILE)  
ALLOY STEEL IP67**



RATED CAPACITY	DIMENSIONS								
	A	B	C	D	E	F	G	H	I
<b>t/mm</b>									
0.1-0.5 t	128.50	51.20	14.20	25.40	76.20	31.80	Ø13	15.90	M12-6H
0.75-1 t	128.50	51.20	14.20	25.40	76.20	31.80	Ø13	19.10	M12-6H
1.5-2 t	128.50	51.20	14.20	25.40	76.20	31.80	Ø13	25.40	M12-6H
<b>lb/inch</b>									
250-1K lb	5.06	2.02	0.56	1.00	3.00	1.25	Ø0.51	0.63	1/2-20UNF
1.5K-2K lb	5.06	2.02	0.56	1.00	3.00	1.25	Ø0.51	0.75	1/2-20UNF
3K-4K lb	5.06	2.02	0.56	1.00	3.00	1.25	Ø0.51	1.00	1/2-20UNF

**Rated Capacity:**  
0.1/0.2/0.3/0.5/0.75  
/1/1.5/2 t

**Rated Output:**  
2.0mV/V

**Non-linearity:**  
±0.03% F.S.

**Hysteresis:**  
±0.03% F.S.

**Repeatability:**  
±0.02% F.S.

**Temperature Effect on Span:**  
±0.0015% F.S./°C

**Temperature Effect on Zero:**  
±0.0027% F.S./°C

**Zero Balance:**

±1.00% F.S.

**Insulation Resistance:**

> 5000 MEGOHMS

**Compensated Temperature Range:**

-10°C - +40°C (14°F-104°F)

**Creep(30 minutes):**  
±0.03% F.S.

**Input Resistance:**  
385±20Ω

**Output Resistance:**  
350±3Ω

**Safe Overload:**

150% F.S.

**Excitation Recommended:**

10-20V AC/DC

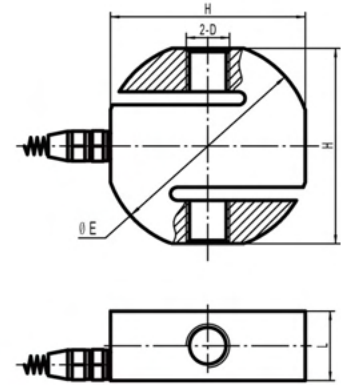
**Material/Finish:**  
Alloy Steel

**Cable Length:**  
Standard Cable  
20ft/6m

**Load Cell Wiring:**

Red.....+Excitation  
Black.....- Excitation  
Green .....+Signal  
White .....- Signal

**SINGLE BEAM, STAINLESS STEEL IP67**



RATED CAPACITY	DIMENSIONS				RATED CAPACITY	DIMENSIONS			
	L	H	E	D		L	H	E	D
<b>kg/mm</b>					<b>lb/inches</b>				
20-150 kg	12.00	70.00	Φ 76.00	M8	50-300 lb	0.47	2.76	Φ 3.00	M8
200-500 kg	20.00	70.00	Φ 76.00	M12	500-1K lb	0.79	2.76	Φ 3.00	M12
700-1,000 kg	25.00	70.00	Φ 76.00	M12	1.5K-2K lb	0.98	2.76	Φ 3.00	M12
1,200-5,000 kg	32.00	90.00	Φ 95.00	M20	2.5K-10K lb	1.26	3.54	Φ 3.74	M20
7,500 kg	40.00	90.00	Φ 95.00	M24	15K lb	1.57	3.54	Φ 3.74	M24
10,000 kg	50.00	110.00	Φ 95.00	M30x2	20K lb	1.97	4.33	Φ 3.74	M30x2

**Rated Capacity:**

20/30/50/75/100/150  
200/250/300/500  
/700 kg  
1/1.2/1.5/2/2.5/3/5  
7.5/10 t

**Rated Output:**

2.0mV/V  
(20kg-7.5t)  
1.8mV/V(10t)

**Non-linearity:**

±0.02% F.S.

**Hysteresis:**

±0.02% F.S.

**Repeatability:**

±0.02% F.S.

**Temperature Effect on Span:**

±0.0015% F.S./°C

**Temperature Effect on Zero:**

±0.0027% F.S./°C

**Zero Balance:**

±1.00% F.S.

**Insulation Resistance:**

> 5000 MEGOHMS

**Compensated Temperature Range:**

-10°C - +40°C(14°F-104°F)

**Creep(30 minutes):**

±0.02% F.S.

**Input Resistance:**

385±20Ω

**Output Resistance:**

350±3Ω

**Safe Overload:**

150% F.S.

**Excitation Recommended:**

10-20V AC/DC

**Material/Finish:**

Stainless Steel

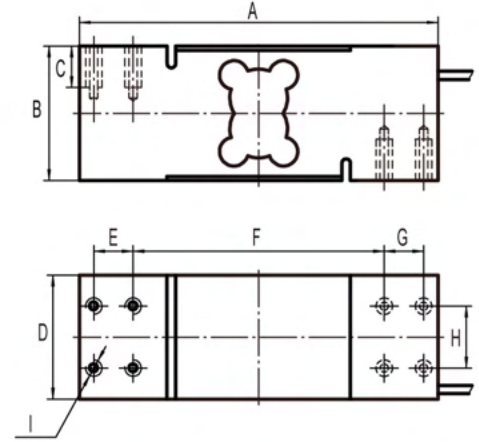
**Cable Length:**

Standard Cable  
20ft/6m

**Load Cell Wiring:**

Red.....+Excitation  
Black.....- Excitation  
Green .....+Signal  
White ..... - Signal

**SINGLE POINT BEAM, ALUMINUM IP67**



RATED CAPACITY	DIMENSIONS								
	A	B	C	D	E	F	G	H	I
<b>kg/mm</b>									
50-1,000 kg	174.00	64.00	20.00	60.00	19.00	122.00	19.00	30.00	8-M8
<b>lb/inches</b>									
100-2,000 lb	6.85	2.52	0.79	2.36	0.75	4.80	0.75	1.18	8-M8

**Rated Capacity:**  
50/60/75/100/150/200  
/250/300/350/500/600  
/635/750/800/1,000 kg

**Rated Output:**  
2.0±0.2mV/V

**Non-linearity:**  
±0.02% F.S.

**Hysteresis:**  
±0.02% F.S.

**Repeatability:**  
±0.02% F.S.

**Creep(30 minutes):**  
±0.03% F.S.

**Temperature Effect on Span:**  
±0.0015% F.S./°C

**Temperature Effect on Zero:**  
±0.0027% F.S./°C

**Zero Balance:**  
±1.00% F.S.

**Insulation Resistance:**  
> 5000 MEGOHMS

**Input Impedance:**  
410±10Ω

**Output Impedance:**  
350±3Ω

**Safe Overload:**  
150% F.S.

**Destructive Load:**  
200% F.S.

**Excitation Recommended:**  
10-15V AC/DC

**Material/Finish:**  
Aluminum

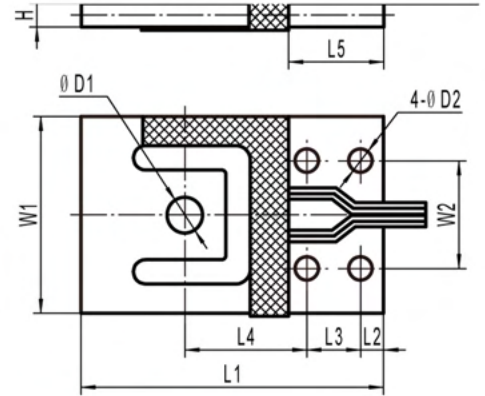
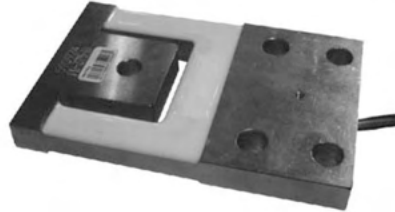
**Operation Temperature:**  
-10°C - +40°C (14°F - 104°F)

**Cable Length:**  
Standard Cable  
10ft/3m

**Load Cell Wiring:**  
Red.....+Excitation  
Black.....- Excitation  
Green .....+Signal  
White ..... - Signal

**Max Platform Size:**  
600mm x 600mm

**SINGLE POINT BEAM, ALUMINUM IP67**



RATED CAPACITY	DIMENSIONS									
	L1	L2	L3	L4	L5	W1	W2	H	ΦD1	ΦD2
<b>kg/mm</b>										
3.75 kg	70.00	4.90	14.00	28.00	23.70	39.00	27.80	2.00	5.10	5.10
7.5 kg	70.00	4.90	14.00	28.00	23.70	39.00	27.80	2.50	5.10	5.10
15 kg	70.00	4.90	14.00	28.00	23.70	39.00	27.80	4.10	7.60	5.10
37.5 kg	76.20	6.00	15.00	29.30	27.00	44.50	30.00	4.80	7.60	6.60
75 kg	84.40	6.40	15.00	34.00	27.70	54.80	30.00	6.40	7.60	6.60
150 kg	107.30	7.80	22.90	45.90	38.40	69.90	44.50	7.90	9.10	8.10
375 kg	119.40	9.10	25.40	52.60	43.70	76.10	50.80	12.70	9.10	9.80
<b>lb/inches</b>										
10 lb	2.75	0.19	0.55	1.10	0.93	1.54	1.09	0.08	0.20	0.20
15 lb	2.75	0.19	0.55	1.10	0.93	1.54	1.09	0.10	0.20	0.20
30 lb	2.75	0.19	0.55	1.10	0.93	1.54	1.09	0.16	0.30	0.20
75 lb	3.00	0.24	0.59	1.15	1.06	1.75	1.18	0.19	0.30	0.26
150 lb	3.32	0.25	0.59	1.34	1.09	2.16	1.18	0.25	0.30	0.26
300 lb	4.22	0.31	0.90	1.81	1.51	2.75	1.75	0.31	0.36	0.32
750 lb	4.70	0.36	1.00	2.07	1.72	3.00	2.00	0.50	0.36	0.39

**Rated Capacity:**

3.75/7.5/15/37.5/75/150 /375 kg

**Rated Output:**

1.0±0.1mV/V

**Non-linearity:**

±0.02% F.S.

**Hysteresis:**

±0.02% F.S.

**Repeatability:**

±0.02% F.S.

**Creep(30 minutes):**

±0.03% F.S.

**Temperature Effect on Span:**

±0.0015% F.S./°C

**Temperature Effect on Zero:**

±0.0027% F.S./°C

**Zero Balance:**

±1.00% F.S.

**Insulation Resistance:**

>5000 MEGOHMS

**Input Impedance:**

1220±15Ω

**Output Impedance:**

1000±5Ω

**Safe Overload:**

150% F.S.

**Destructive Load:**

200% F.S.

**Excitation Recommended:**

10-15V AC/DC

**Material/Finish:**

Aluminum

**Operation Temperature:**

-10°C - +40°C (14°F - 104°F)

**Cable Length:**

Standard Cable  
10ft/3m

**Load Cell Wiring:**

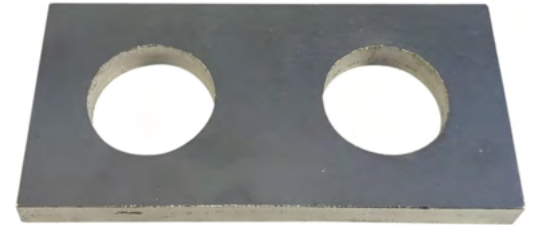
Red.....+Excitation  
Black.....- Excitation  
Green .....+Signal  
White .....- Signal

## LOAD CELL SPACERS

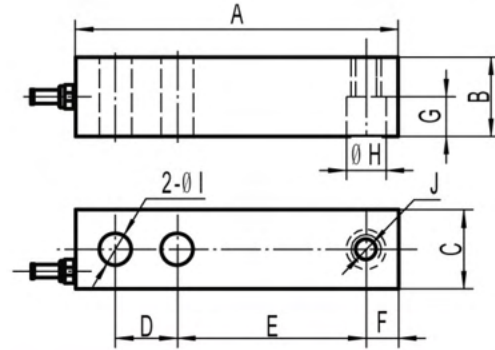
### FEATURES

- For use with single-ended beam load cells
- Provides flat mounting surface
- Compensate for spacing issues with load cell height during installations

PART #	THICKNESS	DIMENSIONS	HOLE SIZE
12133	0.07 (7/10)"	1.28 x 0.94"	0.3"
12134	0.125 (1/8)"	2.18 x 1.24"	0.5"
12135	0.22 ~ (1/4)"	3.16 x 1.51"	0.78"
12136	0.36 ~ (3/8)"	4 x 2"	1"



**SINGLE ENDED BEAM, NICKEL PLATED  
ALLOY STEEL IP67**



SPECIFICATIONS		
PART#	CAPACITY	ENVELOPE
LS-818-0.25	250 lbs	Small
LS-818-0.5	500 lbs	Small
LS-818-1	1,000 lbs	Small
LS-818-1.5	1,500 lbs	Small
LS-818-2.5	2,500 lbs	Small
LS-818-4	4,000 lbs	Small
LS-818-5	5,000 lbs	Small
LS-818LE-5	5,000 lbs	Large
LS-818-10	10,000 lbs	Large
LS-818-15	15,000 lbs	Large
LS-818-20	20,000 lbs	Large

RATED CAPACITY	DIMENSIONS									
	A	B	C	D	E	F	G	H	I	J
<b>lb/inches</b>										
100-5K lbs	5.12	1.25	1.25	1.00	3.00	0.50	0.62	0.53	0.53	1/2-20UNF
5K LE-10K lbs	6.75	1.50	1.50	1.50	3.75	0.75	0.75	0.78	0.78	3/4-6UNF
15K-20K lbs	8.88	2.00	2.00	2.00	4.88	1.00	1.00	1.03	1.03	1-14UNF
<b>kg/mm</b>										
45-2,268 kg	130.05	31.75	31.75	25.40	76.20	12.70	15.75	13.46	13.46	1/2-20UNF
2,268 LE-4,536 kg	171.45	38.10	38.10	38.10	95.25	19.05	19.05	19.81	19.81	3/4-16UNF
6,804-9,072 kg	225.55	50.80	50.80	50.80	123.95	25.40	25.40	26.16	26.16	1-14UNF
<b>kg/mm</b>										
50-2,500 kg	130.05	31.75	31.75	25.40	76.20	12.70	15.75	13.46	13.46	M12
3,000-5,000 kg	171.45	38.10	38.10	38.10	95.25	19.05	19.05	19.81	19.81	M20
7,000-10,000 kg	225.55	50.80	50.80	50.80	123.95	25.40	25.40	26.16	26.16	M24X2
<b>lb/inches</b>										
110-5.5K lbs	5.12	1.25	1.25	1.00	3.00	0.50	0.62	0.53	0.53	M12
6.6K-11K lbs	6.75	1.50	1.50	1.50	3.75	0.75	0.75	0.78	0.78	M20
15.4K-22K lbs	8.88	2.00	2.00	2.00	4.88	1.00	1.00	1.03	1.03	M24X2

Note: LE - large envelope

**SPECIFICATIONS**

**Rated Capacity:**

lb: 100/250/500/750K/1K/1.5K/  
2K/2.5K/4K/5K/5K LE/  
10K/15K/20K

kg: 50/100/200/300/500/1,000  
1,500/2,000/2,500/3,000/  
5,000/7,000/10,000

**Rated Output:**

3.0mV/V

**Non-Linearity:**

±0.03% F.S.

**Hysteresis:**

±0.03% F.S.

**Repeatability:**

±0.02% F.S.

**Creep (30 minutes):**

±0.02% F.S.

**Temperature Effect on Span:**

±0.0015% F.S./C

**Temperature Effect on Zero:**

±0.0027% F.S./C

**Zero Balance:**

±1.00% F.S.

**Insulation Resistance:**

>5000 MEGOHMS

**Input Impedance:**

385±20Ω

**Output Impedance:**

350±3Ω

**Safe Overload:**

150% F.S

**Destructive Load:**

300% F.S

**Excitation Recommended:**

10-15V AC/DC

**Material/Finish:**

Alloy Steel

**Operation Temperature:**

-10°C - + 40°C (14°F - 104°F)

**Cable Length:**

Standard Cable - 20ft/6m

**Load Cell Wiring:**

Red..... +Excitation  
Black..... -Excitation  
Green..... +Signal  
White..... -Signal

**INTERCHANGEABLE PRODUCTS**

Artech: **30310**

Revere: **5123**

Celtron: **SQB**

Coti Global Sensors: **CG-23**

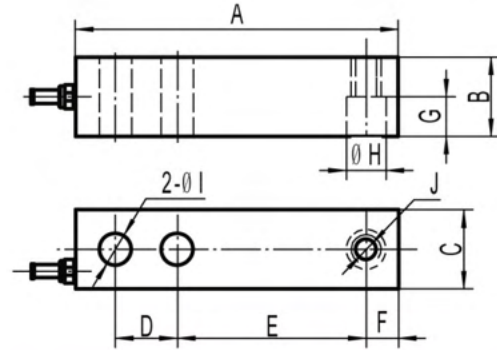
Tedea: **3411**

Totalcomp: **TSB**

**WEIGHING MODULES AVAILABLE**

LS-818-TM

**SINGLE ENDED BEAM, STAINLESS STEEL IP67**



SPECIFICATIONS		
PART#	CAPACITY	ENVELOPE
LS-818-0.25	250 lbs	Small
LS-818-0.5	500 lbs	Small
LS-818-1	1,000 lbs	Small
LS-818-1.5	1,500 lbs	Small
LS-818-2.5	2,500 lbs	Small
LS-818-4	4,000 lbs	Small
LS-818-5	5,000 lbs	Small
LS-818LE-5	5,000 lbs	Large
LS-818-10	10,000 lbs	Large
LS-818-15	15,000 lbs	Large
LS-818-20	20,000 lbs	Large

RATED CAPACITY	DIMENSIONS									
	A	B	C	D	E	F	G	H	I	J
<b>lb/inches</b>										
100-5K lbs	5.12	1.25	1.25	1.00	3.00	0.50	0.62	0.53	0.53	1/2-20UNF
5K LE-10K lbs	6.75	1.50	1.50	1.50	3.75	0.75	0.75	0.78	0.78	3/4-6UNF
15K-20K lbs	8.88	2.00	2.00	2.00	4.88	1.00	1.00	1.03	1.03	1-14UNF
<b>kg/mm</b>										
45-2,268 kg	130.05	31.75	31.75	25.40	76.20	12.70	15.75	13.46	13.46	1/2-20UNF
2,268 LE-4,536 kg	171.45	38.10	38.10	38.10	95.25	19.05	19.05	19.81	19.81	3/4-16UNF
6,804-9,072 kg	225.55	50.80	50.80	50.80	123.95	25.40	25.40	26.16	26.16	1-14UNF
<b>kg/mm</b>										
50-2,500 kg	130.05	31.75	31.75	25.40	76.20	12.70	15.75	13.46	13.46	M12
3,000-5,000 kg	171.45	38.10	38.10	38.10	95.25	19.05	19.05	19.81	19.81	M20
7,000-10,000 kg	225.55	50.80	50.80	50.80	123.95	25.40	25.40	26.16	26.16	M24X2
<b>lb/inches</b>										
110-5.5K lbs	5.12	1.25	1.25	1.00	3.00	0.50	0.62	0.53	0.53	M12
6.6K-11K lbs	6.75	1.50	1.50	1.50	3.75	0.75	0.75	0.78	0.78	M20
15.4K-22K lbs	8.88	2.00	2.00	2.00	4.88	1.00	1.00	1.03	1.03	M24X2

Note: LE - large envelope

**SPECIFICATIONS**

**Rated Capacity:**

lb: 100/250/500/750K/1K/1.5K/  
2K/2.5K/4K/5K/5K LE/  
10K/15K/20K

kg: 50/100/200/300/500/1,000  
1,500/2,000/2,500/3,000/  
5,000/7,000/10,000

**Rated Output:**

3.0mV/V

**Non-Linearity:**

±0.03% F.S.

**Hysteresis:**

±0.03% F.S.

**Repeatability:**

±0.02% F.S.

**Creep (30 minutes):**

±0.02% F.S.

**Temperature Effect on Span:**

±0.0015% F.S./C

**Temperature Effect on Zero:**

±0.0027% F.S./C

**Zero Balance:**

±1.00% F.S.

**Insulation Resistance:**

>5000 MEGOHMS

**Input Impedance:**

385±20Ω

**Output Impedance:**

350±3Ω

**Safe Overload:**

150% F.S

**Destructive Load:**

300% F.S

**Excitation Recommended:**

10-15V AC/DC

**Material/Finish:**

Alloy Steel

**Operation Temperature:**

-10°C - + 40°C (14°F - 104°F)

**Cable Length:**

Standard Cable - 20ft/6m

**Load Cell Wiring:**

Red..... +Excitation  
Black..... -Excitation  
Green..... +Signal  
White..... -Signal

**INTERCHANGEABLE PRODUCTS**

Artech: **30310**

Revere: **5123**

Celtron: **SQB**

HBM: **A35**

Rice Lake: **RL35023**

Coti Global Sensors: **CG-23**

Tedea: **3411**

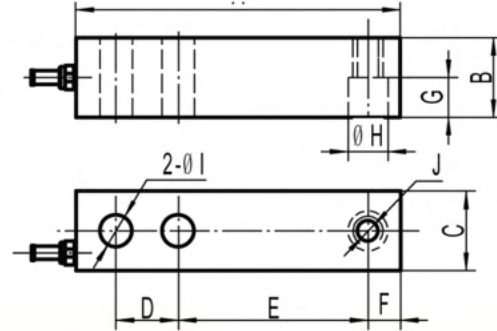
Totalcomp: **TSB**

Sensortronics: **65023**

**WEIGHING MODULES AVAILABLE**

LS-818-TM

**SINGLE ENDED BEAM, STAINLESS STEEL IP68**



SPECIFICATIONS		
PART#	CAPACITY	ENVELOPE
LS-818-SSW-0.5	500 lbs	Small
LS-818-SSW-0.75	750 lbs	Small
LS-818-SSW-1	1,000 lbs	Small
LS-818-SSW-1.5	1,500 lbs	Small
LS-818-SSW-2	2,000 lbs	Small
LS-818-SSW-2.5	2,500 lbs	Small
LS-818-SSW-4	4,000 lbs	Small
LS-818LE-SSW-5	5,000 lbs	Large
LS-818-SSW-10	10,000 lbs	Large
LS-818-SSW-15	15,000 lbs	Large
LS-818-SSW-20	20,000 lbs	Large

RATED CAPACITY	DIMENSIONS									
	A	B	C	D	E	F	G	H	I	J
<b>lb/inches</b>										
500-5K lbs	5.12	1.25	1.25	1.00	3.00	0.50	0.62	0.53	0.53	1/2-20UNF
5K LE-10K lbs	6.75	1.50	1.50	1.50	3.75	0.75	0.75	0.78	0.78	3/4-6UNF
15K-20K lbs	8.88	2.00	2.00	2.00	4.88	1.00	1.00	1.03	1.03	1-14UNF
<b>kg/mm</b>										
45-2,268 kg	130.05	31.75	31.75	25.40	76.20	12.70	15.75	13.46	13.46	1/2-20UNF
2,268 LE-4,536 kg	171.45	38.10	38.10	38.10	95.25	19.05	19.05	19.81	19.81	3/4-16UNF
6,804-9,072 kg	225.55	50.80	50.80	50.80	123.95	25.40	25.40	26.16	26.16	1-14UNF
<b>kg/mm</b>										
50-2,500 kg	130.05	31.75	31.75	25.40	76.20	12.70	15.75	13.46	13.46	M12
3,000-5,000 kg	171.45	38.10	38.10	38.10	95.25	19.05	19.05	19.81	19.81	M20
7,000-10,000 kg	225.55	50.80	50.80	50.80	123.95	25.40	25.40	26.16	26.16	M24X2
<b>lb/inches</b>										
110-5.5K lbs	5.12	1.25	1.25	1.00	3.00	0.50	0.62	0.53	0.53	M12
6.6K-11K lbs	6.75	1.50	1.50	1.50	3.75	0.75	0.75	0.78	0.78	M20
15.4K-22K lbs	8.88	2.00	2.00	2.00	4.88	1.00	1.00	1.03	1.03	M24X2

Note: LE - large envelope

**SPECIFICATIONS**

**Rated Capacity:**  
**lb:** 500/750/1K/1.5K/2K/2.5K  
 4K/5K/10K/15K/20K  
**kg:** 300/500/1,000/1,500/2,000/  
 2,500/3,000/5,000/7,000/10,000

**Rated Output:**  
 3.0mV/V

**Non-Linearity:**  
 ±0.03% F.S.

**Hysteresis:**  
 ±0.03% F.S.

**Repeatability:**  
 ±0.02% F.S.

**Creep (30 minutes):**  
 ±0.02% F.S.

**Temperature Effect on Span:**  
 ±0.0015% F.S./C

**Temperature Effect on Zero:**  
 ±0.0027% F.S./C

**Zero Balance:**  
 ±1.00% F.S.

**Insulation Resistance:**  
 >5000 MEGOHMS

**Input Impedance:**  
 385±20Ω

**Output Impedance:**  
 350±3Ω

**Safe Overload:**  
 150% F.S.

**Destructive Load:**  
 300% F.S.

**Excitation Recommended:**  
 10-15V AC/DC

**Material/Finish:**  
 Stainless Steel

**Operation Temperature:**  
 -10°C - + 40°C (14°F - 104°F)

**Cable Length:**  
 Standard Cable - 20ft/6m

**Load Cell Wiring:**  
 Red..... +Excitation  
 Black..... -Excitation  
 Green..... +Signal  
 White..... -Signal

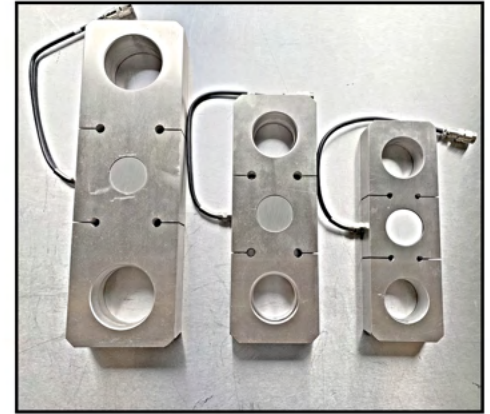
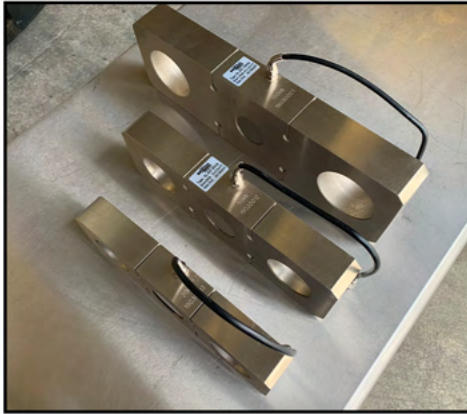
**INTERCHANGEABLE PRODUCTS**

Artech: **2230310**  
 Revere: **9123**  
 Celtron: **SQB SS**  
 HBM: **H35 RLWS**  
 Rice Lake: **RL35023S**  
 Rice Lake: **RLH35**  
 Transcell: **SBS**  
 Coti Global Sensors: **CG-23-SSW-03**

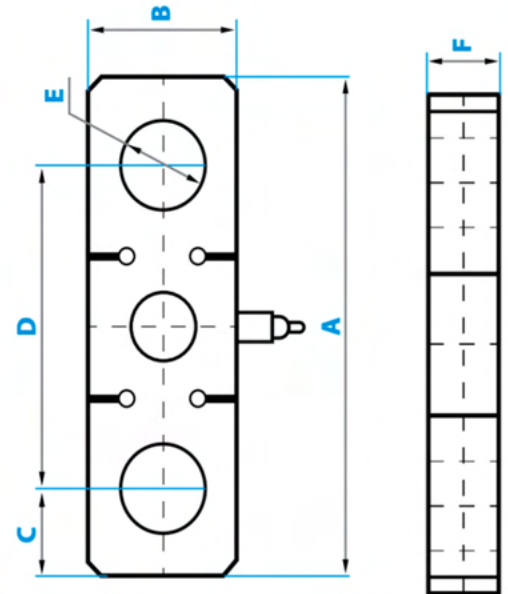
Transcell: **SBS**  
 Fairbanks: **3-54786-1**  
 Sensortronics: **65083S**  
 Mettler-Toledo: **TB601019-008-500 lb**  
 Mettler-Toledo: **TB601016-020-1K lb**  
 Mettler-Toledo: **TB601016-020-2.5K lb**  
 Mettler-Toledo: **TB601017-020-4K lb**  
 Mettler-Toledo: **TB601018-020-5L lb**

**WEIGHING MODULES AVAILABLE**  
 LS-818-TM-SSW





RATED CAPACITY	DIMENSIONS					
	A	B	C	D	E	F
<b>lb/inches</b>						
10k lb	11.125	3.55	1.875	7.25	2.015	1.5
25k lb	11.125	3.55	1.875	7.25	2.015	1.5
50k lb	12.2	4.33	2.01	8.27	2.13	1.69
100k lb	16.5	5.0625	2.375	11.875	2.84	1.97
200k lb	23.625	7.09	3.875	15.75	4.6	3.15
250k lb	23.625	7.09	3.875	15.75	4.6	3.15
<b>kg/mm</b>						
4535.92 kg	282.575	90.17	47.625	184.15	51.181	38.1
11339.8 kg	282.575	90.17	47.625	184.15	51.181	38.1
22679.6 kg	309.88	109.982	51.054	210.058	54.102	42.926
45359.2 kg	419.1	128.5875	60.325	301.625	72.136	50.038
90718.4 kg	600.075	180.086	98.425	400.05	116.84	80.01
113398 kg	600.075	180.086	98.425	400.05	116.84	80.01



**Rated Capacity:**

25/50/100/150/200 /250K lb

**Rated Output:**

2.0mV/V

**Non-linearity:**

±0.03% F. S.

**Hysteresis:**

±0.02% F. S.

**Repeatability:**

±0.02% F. S.

**Creep(30minutes):**

±0.03% F. S.

**Temperature Effect on Span:**

±0.0015% F.S. /°C

**Temperature Effect on Zero:**

±0.0027% F.S. /°C

**Zero Balance:**

±1.00% F. S.

**Insulation Resistance:**

> 5000 MEGOHMS

**Operation Temperature:**

-10°C - +40°C (14°F - 104°F)

**Input Impedance:**

385±20Ω

**Output Impedance:**

350±3Ω

**Safe Overload:**

150% F.S.

**Destructive Load:**

300% F.S.

**Excitation Recommended:**

10-20V AC/DC

**Material/Finish:**

Alloy Steel

**Cable Length:**

Standard Cable

25K lb: 20ft/6m

50K-100K lb: 40ft/12m

150K-250K lb: 60ft/18m

**Load Cell Wiring:**

Red .....+Excitation

Black ..... - Excitation

Green .....+Signal

White ..... - Signal