

### OPTIONAL ACCESSORIES

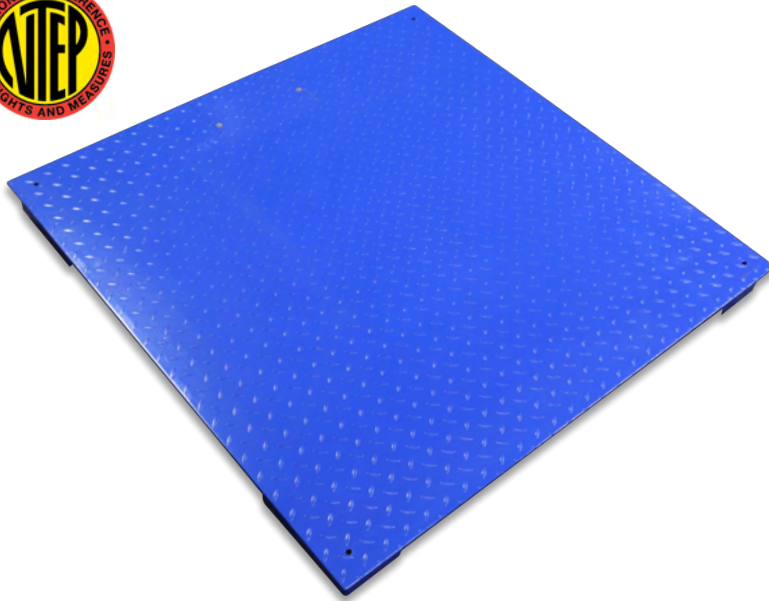
- Thermal printers
- Scoreboard (Large Display)
- Pit-frame or portability frames
- Data Collection Software
- Access Ramps
- Indicator stands
- Explosion proof upgrade
- Water-resistant upgrades
- Bumper Guards (Impact protection)
- Output systems (4-20ma or 0-5V Relay)
- Wireless (Cordless connection)

### FEATURES

- ✓ Powder coated Scale shell, Anti-corrosion
- ✓ Channel construction for superior strength
- ✓ Painted mild steel junction box
- ✓ Four alloy steel load cells
- ✓ Load cell capacity is 2X the scale capacity for a 200% overload protection
- ✓ Four adjustable alloy steel ball capture support feet
- ✓ 15' PVC shelved cable, (upgrades are available to Stainless steel braided cables)
- ✓ Factory pre-calibrated for quick setup
- ✓ Indicator: LS-7515-C

MODELS	CAPACITY in lb	ACCURACY	LOAD CELLS USED	SCALE BASE MATERIAL	NTEP	INDICATOR
LS-700-2X2-1K	1,000	.2 lb	4 (500) lb Capacity load cells	Carbon Steel	No	LS-7515-C
LS-700-2X2-2.5K	2,500	.5 lb	4 (1000 lb) Capacity load cells	Carbon Steel	No	LS-7515-C
LS-700-2X2-5K	5,000	1 lb	4 (2500 lb) Capacity load cells	Carbon Steel	No	LS-7515-C
LS-700-2X3-1K	1,000	.2 lb	4 (500) lb Capacity load cells	Carbon Steel	No	LS-7515-C
LS-700-2X3-2.5K	2,500	.5 lb	4 (1000 lb) Capacity load cells	Carbon Steel	No	LS-7515-C
LS-700-2X3-5K	5,000	1 lb	4 (2500 lb) Capacity load cells	Carbon Steel	No	LS-7515-C
LS-700-3X3-1K	1,000	.2 lb	4 (500) lb Capacity load cells	Carbon Steel	No	LS-7515-C
LS-700-3X3-2.5K	2,500	.5 lb	4 (1000 lb) Capacity load cells	Carbon Steel	No	LS-7515-C
LS-700-3X3-5K	5,000	1 lb	4 (2500 lb) Capacity load cells	Carbon Steel	No	LS-7515-C
LS-700-4X4-1K	1,000	.2 lb	4 (500) lb Capacity load cells	Carbon Steel	No	LS-7515-C
LS-700-4X4-2.5K	2,500	.5 lb	4 (1000 lb) Capacity load cells	Carbon Steel	No	LS-7515-C
LS-700-4X4-5K	5,000	1 lb	4 (2500 lb) Capacity load cells	Carbon Steel	No	LS-7515-C
LS-700-4X4-10K	10,000	2 lb	4 (5000 lb) Capacity load cells	Carbon Steel	No	LS-7515-C
LS-700-4X4-20K	20,000	5 lb	4 (10,000 lb) Capacity load cells	Carbon Steel	No	LS-7515-C
LS-700-4X5-1K	1,000	.2 lb	4 (500) lb Capacity load cells	Carbon Steel	No	LS-7515-C
LS-700-4X5-2.5K	2,500	.5 lb	4 (1000 lb) Capacity load cells	Carbon Steel	No	LS-7515-C
LS-700-4X5-5K	5,000	1 lb	4 (2500 lb) Capacity load cells	Carbon Steel	No	LS-7515-C
LS-700-4X5-10K	10,000	2 lb	4 (5000 lb) Capacity load cells	Carbon Steel	No	LS-7515-C
LS-700-4X6-1K	1,000	.2 lb	4 (500) lb Capacity load cells	Carbon Steel	No	LS-7515-C
LS-700-4X6-2.5K	2,500	.5 lb	4 (1000 lb) Capacity load cells	Carbon Steel	No	LS-7515-C
LS-700-4X6-5K	5,000	1 lb	4 (2500 lb) Capacity load cells	Carbon Steel	No	LS-7515-C
LS-700-4X6-10K	10,000	2 lb	4 (5000 lb) Capacity load cells	Carbon Steel	No	LS-7515-C
LS-700-4X8-1K	1,000	.2 lb	4 (500) lb Capacity load cells	Carbon Steel	No	LS-7515-C
LS-700-4X8-2.5K	2,500	.5 lb	4 (1000 lb) Capacity load cells	Carbon Steel	No	LS-7515-C
LS-700-4X8-5K	5,000	1 lb	4 (2500 lb) Capacity load cells	Carbon Steel	No	LS-7515-C
LS-700-4X8-10K	10,000	2 lb	4 (5000 lb) Capacity load cells	Carbon Steel	No	LS-7515-C
LS-700-4X8-20K	20,000	5 lb	4 (10,000 lb) Capacity load cells	Carbon Steel	No	LS-7515-C
LS-700-5X5-1K	1,000	.2 lb	4 (500) lb Capacity load cells	Carbon Steel	No	LS-7515-C
LS-700-5X5-2.5K	2,500	.5 lb	4 (1000 lb) Capacity load cells	Carbon Steel	No	LS-7515-C
LS-700-5X5-5K	5,000	1 lb	4 (2500 lb) Capacity load cells	Carbon Steel	No	LS-7515-C

MODELS	CAPACITY in lb	ACCURACY	LOAD CELLS USED	SCALE BASE MATERIAL	NTEP	INDICATOR
LS-700-5X5-10K	10,000	2 lb	4 (5000 lb) Capacity load cells	Carbon Steel	No	LS-7515-C
LS-700-5X5-20K	20,000	5 lb	4 (10,000 lb) Capacity load cells	Carbon Steel	No	LS-7515-C
LS-700-5X7-1K	1,000	.2 lb	4 (500) lb Capacity load cells	Carbon Steel	No	LS-7515-C
LS-700-5X7-2.5K	2,500	.5 lb	4 (1000 lb) Capacity load cells	Carbon Steel	No	LS-7515-C
LS-700-5X7-5K	5,000	1 lb	4 (2500 lb) Capacity load cells	Carbon Steel	No	LS-7515-C
LS-700-5X7-10K	10,000	2 lb	4 (5000 lb) Capacity load cells	Carbon Steel	No	LS-7515-C
LS-700-5X7-20K	20,000	5 lb	4 (10,000 lb) Capacity load cells	Carbon Steel	No	LS-7515-C
LS-700-5X8-1K	1,000	.2 lb	4 (500) lb Capacity load cells	Carbon Steel	No	LS-7515-C
LS-700-5X8-2.5K	2,500	.5 lb	4 (1000 lb) Capacity load cells	Carbon Steel	No	LS-7515-C
LS-700-5X8-5K	5,000	1 lb	4 (2500 lb) Capacity load cells	Carbon Steel	No	LS-7515-C
LS-700-5X8-10K	10,000	2 lb	4 (5000 lb) Capacity load cells	Carbon Steel	No	LS-7515-C
LS-700-5X8-20K	20,000	5 lb	4 (10,000 lb) Capacity load cells	Carbon Steel	No	LS-7515-C
LS-700-6X6-1K	1000	.2 lb	4 (500) lb Capacity load cells	Carbon Steel	No	LS-7515-C
LS-700-6X6-2.5K	2500	.5 lb	4 (1000 lb) Capacity load cells	Carbon Steel	No	LS-7515-C
LS-700-6X6-5K	5000	1 lb	4 (2500 lb) Capacity load cells	Carbon Steel	No	LS-7515-C
LS-700-6X6-10K	10,000	2 lb	4 (5000 lb) Capacity load cells	Carbon Steel	No	LS-7515-C
LS-700-6X6-20K	20,000	5 lb	4 (10,000 lb) Capacity load cells	Carbon Steel	No	LS-7515-C
LS-700-7X7-1K	1,000	.2 lb	4 (500) lb Capacity load cells	Carbon Steel	No	LS-7515-C
LS-700-7X7-2.5K	2,500	.5 lb	4 (1000 lb) Capacity load cells	Carbon Steel	No	LS-7515-C
LS-700-7X7-5K	5,000	1 lb	4 (2500 lb) Capacity load cells	Carbon Steel	No	LS-7515-C
LS-700-7X7-10K	10,000	2 lb	4 (5000 lb) Capacity load cells	Carbon Steel	No	LS-7515-C
LS-700-7X7-20K	20,000	5 lb	4 (10,000 lb) Capacity load cells	Carbon Steel	No	LS-7515-C



**FEATURES**

- ✓ Powder coated Scale shell, Anti-corrosion
- ✓ Channel construction for superior strength
- ✓ Painted mild steel junction box
- ✓ Four NTEP certified alloy steel load cells
- ✓ Load cell capacity is 2X the scale capacity for a 200% overload protection
- ✓ Four adjustable alloy steel ball capture support feet
- ✓ 15' heavy duty stainless steel shielded cable
- ✓ Factory pre-calibrated for quick setup
- ✓ Indicator: LS-7510-E-01
- ✓ NTEP COC #: 22-056

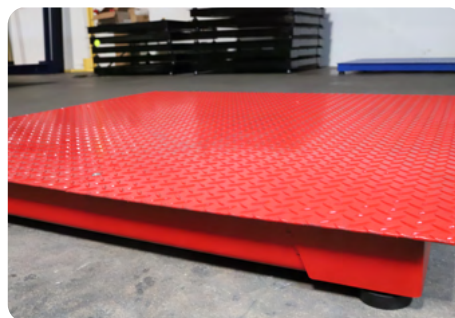
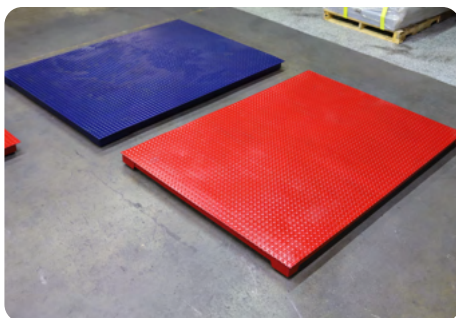
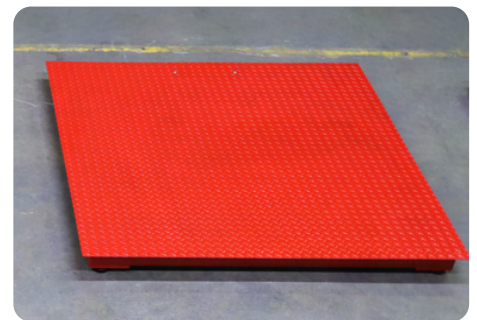
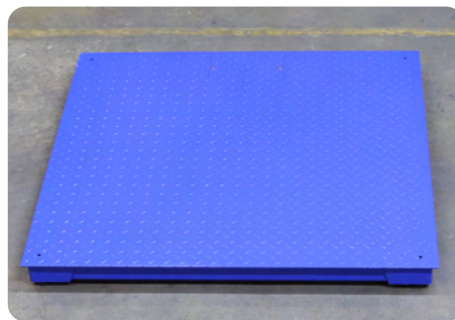
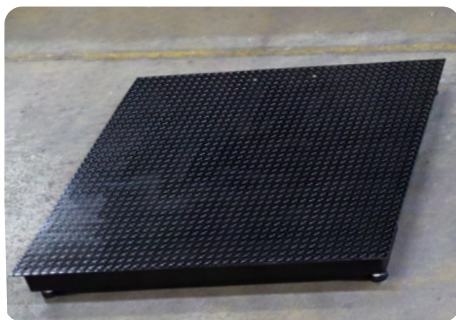
**OPTIONAL ACCESSORIES**

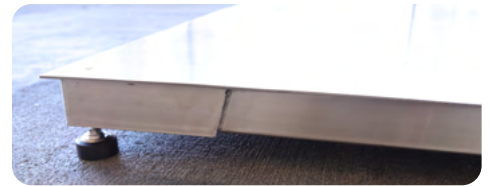
- Thermal printers
- Scoreboard (Large Display)
- Pit-frame or portability frames
- Data Collection Software
- Access Ramps
- Indicator stands
- Explosion proof upgrade
- Water-resistant upgrades
- Bumper Guards (Impact protection)
- Output systems (4-20ma or 0-5V Relay)
- Wireless (Cordless connection)

MODELS	CAPACITY in lb	ACCURACY	LOAD CELLS USED	SCALE BASE MATERIAL	NTEP	INDICATOR
LS-800-2X2-1K	1,000	.2 lb	4 (500 lb) Capacity load cells (NTEP Certified)	Carbon Steel	Yes	LS-7510-LED or LCD
LS-800-2X2-2.5K	2,500	.5 lb	4 (1000 lb) Capacity load cells (NTEP Certified)	Carbon Steel	Yes	LS-7510-LED or LCD
LS-800-2X2-5K	5,000	1 lb	4 (2500 lb) Capacity load cells (NTEP Certified)	Carbon Steel	Yes	LS-7510-LED or LCD
LS-800-2X3-1K	1,000	.2 lb	4 (500 lb) Capacity load cells (NTEP Certified)	Carbon Steel	Yes	LS-7510-LED or LCD
LS-800-2X3-2.5K	2,500	.5 lb	4 (1000 lb) Capacity load cells (NTEP Certified)	Carbon Steel	Yes	LS-7510-LED or LCD
LS-800-2X3-5K	5,000	1 lb	4 (2500 lb) Capacity load cells (NTEP Certified)	Carbon Steel	Yes	LS-7510-LED or LCD

MODELS	CAPACITY in lb	ACCURACY	LOAD CELLS USED	SCALE BASE MATERIAL	NTEP	INDICATOR
LS-800-3X3-1K	1,000	.2 lb	4 (500 lb) Capacity load cells (NTEP Certified)	Carbon Steel	Yes	LS-7510-LED or LCD
LS-800-3X3-2.5K	2,500	.5 lb	4 (1000 lb) Capacity load cells (NTEP Certified)	Carbon Steel	Yes	LS-7510-LED or LCD
LS-800-3X3-5K	5,000	1 lb	4 (2500 lb) Capacity load cells (NTEP Certified)	Carbon Steel	Yes	LS-7510-LED or LCD
LS-800-4X4-1K	1,000	.2 lb	4 (500 lb) Capacity load cells (NTEP Certified)	Carbon Steel	Yes	LS-7510-LED or LCD
LS-800-4X4-2.5K	2,500	.5 lb	4 (1000 lb) Capacity load cells (NTEP Certified)	Carbon Steel	Yes	LS-7510-LED or LCD
LS-800-4X4-5K	5,000	1 lb	4 (2500 lb) Capacity load cells (NTEP Certified)	Carbon Steel	Yes	LS-7510-LED or LCD
LS-800-4X4-10K	10,000	2 lb	4 (5000 lb) Capacity load cells (NTEP Certified)	Carbon Steel	Yes	LS-7510-LED or LCD
LS-800-4X4-20K	20,000	5 lb	4 (10,000 lb) Capacity load cells (NTEP Certified)	Carbon Steel	Yes	LS-7510-LED or LCD
LS-800-4X5-1K	1,000	.2 lb	4 (500 lb) Capacity load cells (NTEP Certified)	Carbon Steel	Yes	LS-7510-LED or LCD
LS-800-4X5-2.5K	2,500	.5 lb	4 (1000 lb) Capacity load cells (NTEP Certified)	Carbon Steel	Yes	LS-7510-LED or LCD
LS-800-4X5-5K	5,000	1 lb	4 (2500 lb) Capacity load cells (NTEP Certified)	Carbon Steel	Yes	LS-7510-LED or LCD
LS-800-4X5-10K	10,000	2 lb	4 (5000 lb) Capacity load cells (NTEP Certified)	Carbon Steel	Yes	LS-7510-LED or LCD
LS-800-4X6-1K	1,000	.2 lb	4 (500 lb) Capacity load cells (NTEP Certified)	Carbon Steel	Yes	LS-7510-LED or LCD
LS-800-4X6-2.5K	2,500	.5 lb	4 (1000 lb) Capacity load cells (NTEP Certified)	Carbon Steel	Yes	LS-7510-LED or LCD
LS-800-4X6-5K	5,000	1 lb	4 (2500 lb) Capacity load cells (NTEP Certified)	Carbon Steel	Yes	LS-7510-LED or LCD
LS-800-4X6-10K	10,000	2 lb	4 (5000 lb) Capacity load cells (NTEP Certified)	Carbon Steel	Yes	LS-7510-LED or LCD
LS-800-4X8-1K	1,000	.2 lb	4 (500 lb) Capacity load cells (NTEP Certified)	Carbon Steel	Yes	LS-7510-LED or LCD
LS-800-4X8-2.5K	2,500	.5 lb	4 (1000 lb) Capacity load cells (NTEP Certified)	Carbon Steel	Yes	LS-7510-LED or LCD
LS-800-4X8-5K	5,000	1 lb	4 (2500 lb) Capacity load cells (NTEP Certified)	Carbon Steel	Yes	LS-7510-LED or LCD
LS-800-4X8-10K	10,000	2 lb	4 (5000 lb) Capacity load cells (NTEP Certified)	Carbon Steel	Yes	LS-7510-LED or LCD
LS-800-4X8-20K	20,000	5 lb	4 (10,000 lb) Capacity load cells (NTEP Certified)	Carbon Steel	Yes	LS-7510-LED or LCD
LS-800-5X5-1K	1,000	.2 lb	4 (500 lb) Capacity load cells (NTEP Certified)	Carbon Steel	Yes	LS-7510-LED or LCD
LS-800-5X5-2.5K	2,500	.5 lb	4 (1000 lb) Capacity load cells (NTEP Certified)	Carbon Steel	Yes	LS-7510-LED or LCD
LS-800-5X5-5K	5,000	1 lb	4 (2500 lb) Capacity load cells (NTEP Certified)	Carbon Steel	Yes	LS-7510-LED or LCD
LS-800-5X5-10K	10,000	2 lb	4 (5000 lb) Capacity load cells (NTEP Certified)	Carbon Steel	Yes	LS-7510-LED or LCD
LS-800-5X5-20K	20,000	5 lb	4 (10,000 lb) Capacity load cells (NTEP Certified)	Carbon Steel	Yes	LS-7510-LED or LCD
LS-800-5X7-1K	1,000	.2 lb	4 (500 lb) Capacity load cells (NTEP Certified)	Carbon Steel	Yes	LS-7510-LED or LCD
LS-800-5X7-2.5K	2,500	.5 lb	4 (1000 lb) Capacity load cells (NTEP Certified)	Carbon Steel	Yes	LS-7510-LED or LCD
LS-800-5X7-5K	5,000	1 lb	4 (2500 lb) Capacity load cells (NTEP Certified)	Carbon Steel	Yes	LS-7510-LED or LCD
LS-800-5X7-10K	10,000	2 lb	4 (5000 lb) Capacity load cells (NTEP Certified)	Carbon Steel	Yes	LS-7510-LED or LCD

MODELS	CAPACITY in lb	ACCURACY	LOAD CELLS USED	SCALE BASE MATERIAL	NTEP	INDICATOR
LS-800-5X7-20K	20,000	5 lb	4 (10,000 lb) Capacity load cells (NTEP Certified)	Carbon Steel	Yes	LS-7510-LED or LCD
LS-800-5X8-1K	1,000	.2 lb	4 (500 lb) Capacity load cells (NTEP Certified)	Carbon Steel	Yes	LS-7510-LED or LCD
LS-800-5X8-2.5K	2,500	.5 lb	4 (1000 lb) Capacity load cells (NTEP Certified)	Carbon Steel	Yes	LS-7510-LED or LCD
LS-800-5X8-5K	5,000	1 lb	4 (2500 lb) Capacity load cells (NTEP Certified)	Carbon Steel	Yes	LS-7510-LED or LCD
LS-800-5X8-10K	10,000	2 lb	4 (5000 lb) Capacity load cells (NTEP Certified)	Carbon Steel	Yes	LS-7510-LED or LCD
LS-800-5X8-20K	20,000	5 lb	4 (10,000 lb) Capacity load cells (NTEP Certified)	Carbon Steel	Yes	LS-7510-LED or LCD
LS-800-6X6-1K	1000	.2 lb	4 (500 lb) Capacity load cells (NTEP Certified)	Carbon Steel	Yes	LS-7510-LED or LCD
LS-800-6X6-2.5K	2500	.5 lb	4 (1000 lb) Capacity load cells (NTEP Certified)	Carbon Steel	Yes	LS-7510-LED or LCD
LS-800-6X6-5K	5000	1 lb	4 (2500 lb) Capacity load cells (NTEP Certified)	Carbon Steel	Yes	LS-7510-LED or LCD
LS-800-6X6-10K	10,000	2 lb	4 (5000 lb) Capacity load cells (NTEP Certified)	Carbon Steel	Yes	LS-7510-LED or LCD
LS-800-6X6-20K	20,000	5 lb	4 (10,000 lb) Capacity load cells (NTEP Certified)	Carbon Steel	Yes	LS-7510-LED or LCD
LS-800-7X7-1K	1,000	.2 lb	4 (500 lb) Capacity load cells (NTEP Certified)	Carbon Steel	Yes	LS-7510-LED or LCD
LS-800-7X7-2.5K	2,500	.5 lb	4 (1000 lb) Capacity load cells (NTEP Certified)	Carbon Steel	Yes	LS-7510-LED or LCD
LS-800-7X7-5K	5,000	1 lb	4 (2500 lb) Capacity load cells (NTEP Certified)	Carbon Steel	Yes	LS-7510-LED or LCD
LS-800-7X7-10K	10,000	2 lb	4 (5000 lb) Capacity load cells (NTEP Certified)	Carbon Steel	Yes	LS-7510-LED or LCD
LS-800-7X7-20K	20,000	5 lb	4 (10,000 lb) Capacity load cells (NTEP Certified)	Carbon Steel	Yes	LS-7510-LED or LCD





**FEATURES**

- ✓ Stainless Steel fixed top smooth deck
- ✓ Anti-corrosion, Full Stainless steel structure
- ✓ Channel construction for superior strength
- ✓ Stainless steel junction box
- ✓ Four NTEP certified laser welded and sealed IP68 stainless steel load cells
- ✓ Load cell capacity is 2X the scale capacity for a 200% overload protection
- ✓ Four adjustable stainless steel ball capture support feet
- ✓ 15' heavy duty stainless steel shielded cable
- ✓ Factory pre-calibrated for quick setup
- ✓ NTEP COC #: 22-056

**OPTIONAL ACCESSORIES**

- Thermal printers
- Scoreboard (Large Display)
- Pit-frame or portability frames
- Data Collection Software
- Access Ramps
- Indicator stands
- Explosion proof upgrade
- Water-resistant upgrades
- Bumper Guards (Impact protection)
- Output systems (4-20ma or 0-5V Relay)
- Wireless (Cordless connection)

**OPTIONAL INDICATOR**

**Stainless Steel: Fully Washdown indicators :**

- LS-7510-SS-E-12      LS-7510-LS-E-13 (LED Power Supply Only) , LS-7510-LS-E-23 (LED Power Supply & Battery)
- LS-7510-SS-C-12      LS-7510-LS-C-13 (LCD Power Supply Only), LS-7510-LS-C-23 (LCD Power Supply & Battery)

**SMOOTH SURFACE MODEL**

MODELS	CAPACITY in lb	ACCURACY	LOAD CELLS USED	SCALE BASE MATERIAL	NTEP	INDICATOR
LS-800-SS-2X2-1K	1,000	.2 lb	4 (500 lb) Capacity Stainless steel load cells	304 Stainless steel	Yes	LS-7510-LED or LCD
LS-800-SS-2X2-2.5K	2,500	.5 lb	4 (1000 lb) Capacity Stainless steel load cells	304 Stainless steel	Yes	LS-7510-LED or LCD
LS-800-SS-2X2-5K	5,000	1 lb	4 (2500 lb) Capacity Stainless steel load cells	304 Stainless steel	Yes	LS-7510-LED or LCD
LS-800-SS-2X3-1K	1,000	.2 lb	4 (500 lb) Capacity Stainless steel load cells	304 Stainless steel	Yes	LS-7510-LED or LCD
LS-800-SS-2X3-2.5K	2,500	.5 lb	4 (1000 lb) Capacity Stainless steel load cells	304 Stainless steel	Yes	LS-7510-LED or LCD
LS-800-SS-2X3-5K	5,000	1 lb	4 (2500 lb) Capacity Stainless steel load cells	304 Stainless steel	Yes	LS-7510-LED or LCD

**NTEP STAINLESS STEEL FIX TOP FLOOR SCALES**

MODELS	CAPACITY in lb	ACCURACY	LOAD CELLS USED	SCALE BASE MATERIAL	NTEP	INDICATOR
LS-800-SS-3X3-1K	1,000	.2 lb	4 (500 lb) Capacity Stainless steel load cells	304 Stainless steel	Yes	LS-7510-LED or LCD
LS-800-SS-3X3-2.5K	2,500	.5 lb	4 (1000 lb) Capacity Stainless steel load cells	304 Stainless steel	Yes	LS-7510-LED or LCD
LS-800-SS-3X3-5K	5,000	1 lb	4 (2500 lb) Capacity Stainless steel load cells	304 Stainless steel	Yes	LS-7510-LED or LCD
LS-800-SS-4X4-1K	1,000	.2 lb	4 (500 lb) Capacity Stainless steel load cells	304 Stainless steel	Yes	LS-7510-LED or LCD
LS-800-SS-4X4-2.5K	2,500	.5 lb	4 (1000 lb) Capacity Stainless steel load cells	304 Stainless steel	Yes	LS-7510-LED or LCD
LS-800-SS-4X4-5K	5,000	1 lb	4 (2500 lb) Capacity Stainless steel load cells	304 Stainless steel	Yes	LS-7510-LED or LCD
LS-800-SS-4X4-10K	10,000	2 lb	4 (5000 lb) Capacity Stainless steel load cells	304 Stainless steel	Yes	LS-7510-LED or LCD
LS-800-SS-4X5-1K	1,000	.2 lb	4 (500 lb) Capacity Stainless steel load cells	304 Stainless steel	Yes	LS-7510-LED or LCD
LS-800-SS-4X5-2.5K	2,500	.5 lb	4 (1000 lb) Capacity Stainless steel load cells	304 Stainless steel	Yes	LS-7510-LED or LCD
LS-800-SS-4X5-5K	5,000	1 lb	4 (2500 lb) Capacity Stainless steel load cells	304 Stainless steel	Yes	LS-7510-LED or LCD
LS-800-SS-4X5-10K	10,000	2 lb	4 (5000 lb) Capacity Stainless steel load cells	304 Stainless steel	Yes	LS-7510-LED or LCD
LS-800-SS-4X6-1K	1,000	.2 lb	4 (500 lb) Capacity Stainless steel load cells	304 Stainless steel	Yes	LS-7510-LED or LCD
LS-800-SS-4X6-2.5K	2,500	.5 lb	4 (1000 lb) Capacity Stainless steel load cells	304 Stainless steel	Yes	LS-7510-LED or LCD
LS-800-SS-4X6-5K	5,000	1 lb	4 (2500 lb) Capacity Stainless steel load cells	304 Stainless steel	Yes	LS-7510-LED or LCD
LS-800-SS-4X6-10K	10,000	2 lb	4 (5000 lb) Capacity Stainless steel load cells	304 Stainless steel	Yes	LS-7510-LED or LCD
LS-800-SS-4X8-1K	1,000	.2 lb	4 (500 lb) Capacity Stainless steel load cells	304 Stainless steel	Yes	LS-7510-LED or LCD
LS-800-SS-4X8-2.5K	2,500	.5 lb	4 (1000 lb) Capacity Stainless steel load cells	304 Stainless steel	Yes	LS-7510-LED or LCD
LS-800-SS-4X8-5K	5,000	1 lb	4 (2500 lb) Capacity Stainless steel load cells	304 Stainless steel	Yes	LS-7510-LED or LCD
LS-800-SS-4X8-10K	10,000	2 lb	4 (5000 lb) Capacity Stainless steel load cells	304 Stainless steel	Yes	LS-7510-LED or LCD
LS-800-SS-5X5-1K	1,000	.2 lb	4 (500 lb) Capacity Stainless steel load cells	304 Stainless steel	Yes	LS-7510-LED or LCD
LS-800-SS-5X5-2.5K	2,500	.5 lb	4 (1000 lb) Capacity Stainless steel load cells	304 Stainless steel	Yes	LS-7510-LED or LCD
LS-800-SS-5X5-5K	5,000	1 lb	4 (2500 lb) Capacity Stainless steel load cells	304 Stainless steel	Yes	LS-7510-LED or LCD
LS-800-SS-5X5-10K	10,000	2 lb	4 (5000 lb) Capacity Stainless steel load cells	304 Stainless steel	Yes	LS-7510-LED or LCD
LS-800-SS-5X7-1K	1,000	.2 lb	4 (500 lb) Capacity Stainless steel load cells	304 Stainless steel	Yes	LS-7510-LED or LCD
LS-800-SS-5X7-2.5K	2,500	.5 lb	4 (1000 lb) Capacity Stainless steel load cells	304 Stainless steel	Yes	LS-7510-LED or LCD
LS-800-SS-5X7-5K	5,000	1 lb	4 (2500 lb) Capacity Stainless steel load cells	304 Stainless steel	Yes	LS-7510-LED or LCD
LS-800-SS-5X7-10K	10,000	2 lb	4 (5000 lb) Capacity Stainless steel load cells	304 Stainless steel	Yes	LS-7510-LED or LCD
LS-800-SS-5X8-1K	1,000	.2 lb	4 (500 lb) Capacity Stainless steel load cells	304 Stainless steel	Yes	LS-7510-LED or LCD
LS-800-SS-5X8-2.5K	2,500	.5 lb	4 (1000 lb) Capacity Stainless steel load cells	304 Stainless steel	Yes	LS-7510-LED or LCD
LS-800-SS-5X8-5K	5,000	1 lb	4 (2500 lb) Capacity Stainless steel load cells	304 Stainless steel	Yes	LS-7510-LED or LCD



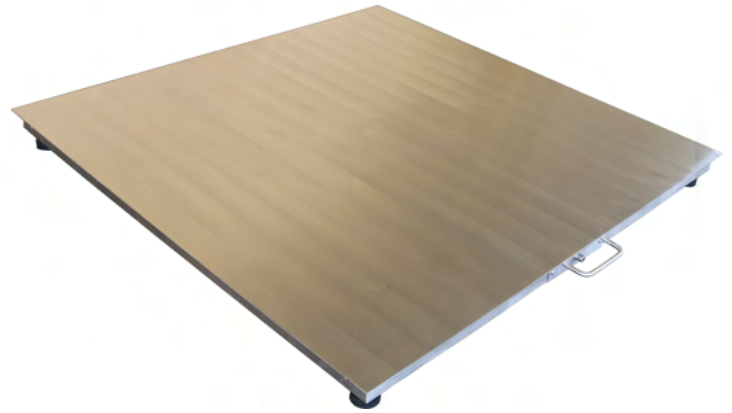
MODELS	CAPACITY in lb	ACCURACY	LOAD CELLS USED	SCALE BASE MATERIAL	NTEP	INDICATOR
LS-800-SS-5X8-10K	10,000	2 lb	4 (5000 lb) Capacity Stainless steel load cells	304 Stainless steel	Yes	LS-7510-LED or LCD
LS-800-SS-6X6-1K	1,000	.2 lb	4 (500 lb) Capacity Stainless steel load cells	304 Stainless steel	Yes	LS-7510-LED or LCD
LS-800-SS-6X6-2.5K	2,500	.5 lb	4 (1000 lb) Capacity Stainless steel load cells	304 Stainless steel	Yes	LS-7510-LED or LCD
LS-800-SS-6X6-5K	5,000	1 lb	4 (2500 lb) Capacity Stainless steel load cells	304 Stainless steel	Yes	LS-7510-LED or LCD
LS-800-SS-6X6-10K	10,000	5 lb	4 (5000 lb) Capacity Stainless steel load cells	304 Stainless steel	Yes	LS-7510-LED or LCD
LS-800-SS-7X7-1K	1,000	.2 lb	4 (500 lb) Capacity Stainless steel load cells	304 Stainless steel	Yes	LS-7510-LED or LCD
LS-800-SS-7X7-2.5K	2,500	.5 lb	4 (1000 lb) Capacity Stainless steel load cells	304 Stainless steel	Yes	LS-7510-LED or LCD
LS-800-SS-7X7-5K	5,000	1 lb	4 (2500 lb) Capacity Stainless steel load cells	304 Stainless steel	Yes	LS-7510-LED or LCD
LS-800-SS-7X7-10K	10,000	2 lb	4 (5000 lb) Capacity Stainless steel load cells	304 Stainless steel	Yes	LS-7510-LED or LCD

## DIAMOND PLATE SURFACE MODEL

MODELS	CAPACITY in lb	ACCURACY	LOAD CELLS USED	SCALE BASE MATERIAL	NTEP	INDICATOR
LS-800-SS-DP-2X2-1K	1,000	.2 lb	4 (500 lb) Capacity Stainless steel load cells	304 Stainless steel	Yes	LS-7510-LED or LCD
LS-800-SS-DP-2X2-2.5K	2,500	.5 lb	4 (1000 lb) Capacity Stainless steel load cells	304 Stainless steel	Yes	LS-7510-LED or LCD
LS-800-SS-DP-2X2-5K	5,000	1 lb	4 (2500 lb) Capacity Stainless steel load cells	304 Stainless steel	Yes	LS-7510-LED or LCD
LS-800-SS-DP-2X3-1K	1,000	.2 lb	4 (500 lb) Capacity Stainless steel load cells	304 Stainless steel	Yes	LS-7510-LED or LCD
LS-800-SS-DP-2X3-2.5K	2,500	.5 lb	4 (1000 lb) Capacity Stainless steel load cells	304 Stainless steel	Yes	LS-7510-LED or LCD
LS-800-SS-DP-2X3-5K	5,000	1 lb	4 (2500 lb) Capacity Stainless steel load cells	304 Stainless steel	Yes	LS-7510-LED or LCD
LS-800-SS-DP-3X3-1K	1,000	.2 lb	4 (500 lb) Capacity Stainless steel load cells	304 Stainless steel	Yes	LS-7510-LED or LCD
LS-800-SS-DP-3X3-2.5K	2,500	.5 lb	4 (1000 lb) Capacity Stainless steel load cells	304 Stainless steel	Yes	LS-7510-LED or LCD
LS-800-SS-DP-3X3-5K	5,000	1 lb	4 (2500 lb) Capacity Stainless steel load cells	304 Stainless steel	Yes	LS-7510-LED or LCD
LS-800-SS-DP-4X4-1K	1,000	.2 lb	4 (500 lb) Capacity Stainless steel load cells	304 Stainless steel	Yes	LS-7510-LED or LCD
LS-800-SS-DP-4X4-2.5K	2,500	.5 lb	4 (1000 lb) Capacity Stainless steel load cells	304 Stainless steel	Yes	LS-7510-LED or LCD
LS-800-SS-DP-4X4-5K	5,000	1 lb	4 (2500 lb) Capacity Stainless steel load cells	304 Stainless steel	Yes	LS-7510-LED or LCD
LS-800-SS-DP-4X4-10K	10,000	2 lb	4 (5000 lb) Capacity Stainless steel load cells	304 Stainless steel	Yes	LS-7510-LED or LCD
LS-800-SS-DP-4X5-1K	1,000	.2 lb	4 (500 lb) Capacity Stainless steel load cells	304 Stainless steel	Yes	LS-7510-LED or LCD
LS-800-SS-DP-4X5-2.5K	2,500	.5 lb	4 (1000 lb) Capacity Stainless steel load cells	304 Stainless steel	Yes	LS-7510-LED or LCD
LS-800-SS-DP-4X5-5K	5,000	1 lb	4 (2500 lb) Capacity Stainless steel load cells	304 Stainless steel	Yes	LS-7510-LED or LCD

**NTEP STAINLESS STEEL FIX TOP FLOOR SCALES**

MODELS	CAPACITY in lb	ACCURACY	LOAD CELLS USED	SCALE BASE MATERIAL	NTEP	INDICATOR
LS-800-SS-DP-4X5-10K	10,000	2 lb	4 (5000 lb) Capacity Stainless steel load cells	304 Stainless steel	Yes	LS-7510-LED or LCD
LS-800-SS-DP-4X6-1K	1,000	.2 lb	4 (500 lb) Capacity Stainless steel load cells	304 Stainless steel	Yes	LS-7510-LED or LCD
LS-800-SS-DP-4X6-2.5K	2,500	.5 lb	4 (1000 lb) Capacity Stainless steel load cells	304 Stainless steel	Yes	LS-7510-LED or LCD
LS-800-SS-DP-4X6-5K	5,000	1 lb	4 (2500 lb) Capacity Stainless steel load cells	304 Stainless steel	Yes	LS-7510-LED or LCD
LS-800-SS-DP-4X6-10K	10,000	2 lb	4 (5000 lb) Capacity Stainless steel load cells	304 Stainless steel	Yes	LS-7510-LED or LCD
LS-800-SS-DP-4X8-1K	1,000	.2 lb	4 (500 lb) Capacity Stainless steel load cells	304 Stainless steel	Yes	LS-7510-LED or LCD
LS-800-SS-DP-4X8-2.5K	2,500	.5 lb	4 (1000 lb) Capacity Stainless steel load cells	304 Stainless steel	Yes	LS-7510-LED or LCD
LS-800-SS-DP-4X8-5K	5,000	1 lb	4 (2500 lb) Capacity Stainless steel load cells	304 Stainless steel	Yes	LS-7510-LED or LCD
LS-800-SS-DP-4X8-10K	10,000	2 lb	4 (5000 lb) Capacity Stainless steel load cells	304 Stainless steel	Yes	LS-7510-LED or LCD
LS-800-SS-DP-5X5-1K	1,000	.2 lb	4 (500 lb) Capacity Stainless steel load cells	304 Stainless steel	Yes	LS-7510-LED or LCD
LS-800-SS-DP-5X5-2.5K	2,500	.5 lb	4 (1000 lb) Capacity Stainless steel load cells	304 Stainless steel	Yes	LS-7510-LED or LCD
LS-800-SS-DP-5X5-5K	5,000	1 lb	4 (2500 lb) Capacity Stainless steel load cells	304 Stainless steel	Yes	LS-7510-LED or LCD
LS-800-SS-DP-5X5-10K	10,000	2 lb	4 (5000 lb) Capacity Stainless steel load cells	304 Stainless steel	Yes	LS-7510-LED or LCD
LS-800-SS-DP-5X7-1K	1,000	.2 lb	4 (500 lb) Capacity Stainless steel load cells	304 Stainless steel	Yes	LS-7510-LED or LCD
LS-800-SS-DP-5X7-2.5K	2,500	.5 lb	4 (1000 lb) Capacity Stainless steel load cells	304 Stainless steel	Yes	LS-7510-LED or LCD
LS-800-SS-DP-5X7-5K	5,000	1 lb	4 (2500 lb) Capacity Stainless steel load cells	304 Stainless steel	Yes	LS-7510-LED or LCD
LS-800-SS-DP-5X7-10K	10,000	2 lb	4 (5000 lb) Capacity Stainless steel load cells	304 Stainless steel	Yes	LS-7510-LED or LCD
LS-800-SS-DP-5X8-1K	1,000	.2 lb	4 (500 lb) Capacity Stainless steel load cells	304 Stainless steel	Yes	LS-7510-LED or LCD
LS-800-SS-DP-5X8-2.5K	2,500	.5 lb	4 (1000 lb) Capacity Stainless steel load cells	304 Stainless steel	Yes	LS-7510-LED or LCD
LS-800-SS-DP-5X8-5K	5,000	1 lb	4 (2500 lb) Capacity Stainless steel load cells	304 Stainless steel	Yes	LS-7510-LED or LCD
LS-800-SS-DP-5X8-10K	10,000	2 lb	4 (5000 lb) Capacity Stainless steel load cells	304 Stainless steel	Yes	LS-7510-LED or LCD
LS-800-SS-DP-6X6-1K	1,000	.2 lb	4 (500 lb) Capacity Stainless steel load cells	304 Stainless steel	Yes	LS-7510-LED or LCD
LS-800-SS-DP-6X6-2.5K	2,500	.5 lb	4 (1000 lb) Capacity Stainless steel load cells	304 Stainless steel	Yes	LS-7510-LED or LCD
LS-800-SS-DP-6X6-5K	5,000	1 lb	4 (2500 lb) Capacity Stainless steel load cells	304 Stainless steel	Yes	LS-7510-LED or LCD
LS-800-SS-DP-6X6-10K	10,000	5 lb	4 (5000 lb) Capacity Stainless steel load cells	304 Stainless steel	Yes	LS-7510-LED or LCD
LS-800-SS-DP-7X7-1K	1,000	.2 lb	4 (500 lb) Capacity Stainless steel load cells	304 Stainless steel	Yes	LS-7510-LED or LCD
LS-800-SS-DP-7X7-2.5K	2,500	.5 lb	4 (1000 lb) Capacity Stainless steel load cells	304 Stainless steel	Yes	LS-7510-LED or LCD
LS-800-SS-DP-7X7-5K	5,000	1 lb	4 (2500 lb) Capacity Stainless steel load cells	304 Stainless steel	Yes	LS-7510-LED or LCD
LS-800-SS-DP-7X7-10K	10,000	2 lb	4 (5000 lb) Capacity Stainless steel load cells	304 Stainless steel	Yes	LS-7510-LED or LCD



## FEATURES

- ✓ Hydraulic manual top lifts for easy washdown
- ✓ 304 stainless steel construction with safety diamond tread plate deck
- ✓ Stainless steel single lift or double lift doors available.
- ✓ NEMA 4X watertight stainless steel junction box
- ✓ Side access to junction box to minimize water access
- ✓ Four NTEP certified laser welded and sealed IP68 stainless steel load cells
- ✓ Load cell capacity is 2X the scale capacity for a 200% overload protection
- ✓ Four adjustable stainless steel ball capture support feet
- ✓ 15' heavy duty stainless steel shielded cable
- ✓ Factory pre-calibrated for quick setup
- ✓ NTEP COC #: 22-056

## OPTIONAL ACCESSORIES

- Thermal printers
- Scoreboard (Large Display)
- Pit-frame or portability frames
- Data Collection Software
- Access Ramps
- Indicator stands
- Explosion proof upgrade
- Water-resistant upgrades
- Bumper Guards (Impact protection)
- Output systems (4-20ma or 0-5V Relay)
- Wireless (Cordless connection)

## SMOOTH SURFACE MODEL

MODELS	CAPACITY in lb	ACCURACY	LOAD CELLS USED	SCALE BASE MATERIAL	NTEP	INDICATOR
LS-800-SS-LT-3X3-1K	1,000	.2 lb	4 (500 lb) Capacity Stainless steel load cells	304 Stainless steel	Yes	LS-7510-LED or LCD
LS-800-SS-LT-3X3-2.5K	2,500	.5 lb	4 (1000 lb) Capacity Stainless steel load cells	304 Stainless steel	Yes	LS-7510-LED or LCD
LS-800-SS-LT-3X3-5K	5,000	1 lb	4 (2500 lb) Capacity Stainless steel load cells	304 Stainless steel	Yes	LS-7510-LED or LCD
LS-800-SS-LT-4X4-1K	1,000	.2 lb	4 (500 lb) Capacity Stainless steel load cells	304 Stainless steel	Yes	LS-7510-LED or LCD
LS-800-SS-LT-4X4-2.5K	2,500	.5 lb	4 (1000 lb) Capacity Stainless steel load cells	304 Stainless steel	Yes	LS-7510-LED or LCD
LS-800-SS-LT-4X4-5K	5,000	1 lb	4 (2500 lb) Capacity Stainless steel load cells	304 Stainless steel	Yes	LS-7510-LED or LCD

MODELS	CAPACITY in lb	ACCURACY	LOAD CELLS USED	SCALE BASE MATERIAL	NTEP	INDICATOR
LS-800-SS-LT-4X4-10K	10,000	2 lb	4 (5000 lb) Capacity Stainless steel load cells	304 Stainless steel	Yes	LS-7510-LED or LCD
LS-800-SS-LT-4X5-1K	1,000	.2 lb	4 (500 lb) Capacity Stainless steel load cells	304 Stainless steel	Yes	LS-7510-LED or LCD
LS-800-SS-LT-4X5-2.5K	2,500	.5 lb	4 (1000 lb) Capacity Stainless steel load cells	304 Stainless steel	Yes	LS-7510-LED or LCD
LS-800-SS-LT-4X5-5K	5,000	1 lb	4 (2500 lb) Capacity Stainless steel load cells	304 Stainless steel	Yes	LS-7510-LED or LCD
LS-800-SS-LT-4X5-10K	10,000	2 lb	4 (5000 lb) Capacity Stainless steel load cells	304 Stainless steel	Yes	LS-7510-LED or LCD
LS-800-SS-LT-4X6-1K	1,000	.2 lb	4 (500 lb) Capacity Stainless steel load cells	304 Stainless steel	Yes	LS-7510-LED or LCD
LS-800-SS-LT-4X6-2.5K	2,500	.5 lb	4 (1000 lb) Capacity Stainless steel load cells	304 Stainless steel	Yes	LS-7510-LED or LCD
LS-800-SS-LT-4X6-5K	5,000	1 lb	4 (2500 lb) Capacity Stainless steel load cells	304 Stainless steel	Yes	LS-7510-LED or LCD
LS-800-SS-LT-4X6-10K	10,000	2 lb	4 (5000 lb) Capacity Stainless steel load cells	304 Stainless steel	Yes	LS-7510-LED or LCD
LS-800-SS-LT-4X8-1K	1,000	.2 lb	4 (500 lb) Capacity Stainless steel load cells	304 Stainless steel	Yes	LS-7510-LED or LCD
LS-800-SS-LT-4X8-2.5K	2,500	.5 lb	4 (1000 lb) Capacity Stainless steel load cells	304 Stainless steel	Yes	LS-7510-LED or LCD
LS-800-SS-LT-4X8-5K	5,000	1 lb	4 (2500 lb) Capacity Stainless steel load cells	304 Stainless steel	Yes	LS-7510-LED or LCD
LS-800-SS-LT-4X8-10K	10,000	2 lb	4 (5000 lb) Capacity Stainless steel load cells	304 Stainless steel	Yes	LS-7510-LED or LCD
LS-800-SS-LT-5X5-1K	1,000	.2 lb	4 (500 lb) Capacity Stainless steel load cells	304 Stainless steel	Yes	LS-7510-LED or LCD
LS-800-SS-LT-5X5-2.5K	2,500	.5 lb	4 (1000 lb) Capacity Stainless steel load cells	304 Stainless steel	Yes	LS-7510-LED or LCD
LS-800-SS-LT-5X5-5K	5,000	1 lb	4 (2500 lb) Capacity Stainless steel load cells	304 Stainless steel	Yes	LS-7510-LED or LCD
LS-800-SS-LT-5X5-10K	10,000	2 lb	4 (5000 lb) Capacity Stainless steel load cells	304 Stainless steel	Yes	LS-7510-LED or LCD
LS-800-SS-LT-5X7-1K	1,000	.2 lb	4 (500 lb) Capacity Stainless steel load cells	304 Stainless steel	Yes	LS-7510-LED or LCD
LS-800-SS-LT-5X7-2.5K	2,500	.5 lb	4 (1000 lb) Capacity Stainless steel load cells	304 Stainless steel	Yes	LS-7510-LED or LCD
LS-800-SS-LT-5X7-5K	5,000	1 lb	4 (2500 lb) Capacity Stainless steel load cells	304 Stainless steel	Yes	LS-7510-LED or LCD
LS-800-SS-LT-5X7-10K	10,000	2 lb	4 (5000 lb) Capacity Stainless steel load cells	304 Stainless steel	Yes	LS-7510-LED or LCD
LS-800-SS-LT-5X8-1K	1,000	.2 lb	4 (500 lb) Capacity Stainless steel load cells	304 Stainless steel	Yes	LS-7510-LED or LCD
LS-800-SS-LT-5X8-2.5K	2,500	.5 lb	4 (1000 lb) Capacity Stainless steel load cells	304 Stainless steel	Yes	LS-7510-LED or LCD
LS-800-SS-LT-5X8-5K	5,000	1 lb	4 (2500 lb) Capacity Stainless steel load cells	304 Stainless steel	Yes	LS-7510-LED or LCD
LS-800-SS-LT-5X8-10K	10,000	2 lb	4 (5000 lb) Capacity Stainless steel load cells	304 Stainless steel	Yes	LS-7510-LED or LCD
LS-800-SS-LT-6X6-1K	1,000	.2 lb	4 (500 lb) Capacity Stainless steel load cells	304 Stainless steel	Yes	LS-7510-LED or LCD
LS-800-SS-LT-6X6-2.5K	2,500	.5 lb	4 (1000 lb) Capacity Stainless steel load cells	304 Stainless steel	Yes	LS-7510-LED or LCD
LS-800-SS-LT-6X6-5K	5,000	1 lb	4 (2500 lb) Capacity Stainless steel load cells	304 Stainless steel	Yes	LS-7510-LED or LCD
LS-800-SS-LT-6X6-10K	10,000	2 lb	4 (5000 lb) Capacity Stainless steel load cells	304 Stainless steel	Yes	LS-7510-LED or LCD
LS-800-SS-LT-7X7-1K	1,000	.2 lb	4 (500 lb) Capacity Stainless steel load cells	304 Stainless steel	Yes	LS-7510-LED or LCD

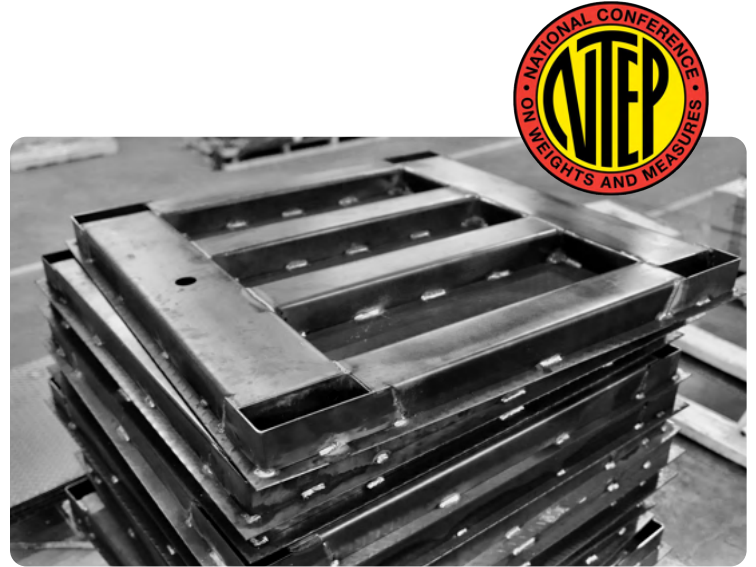
MODELS	CAPACITY in lb	ACCURACY	LOAD CELLS USED	SCALE BASE MATERIAL	NTEP	INDICATOR
LS-800-SS-LT-7X7-2.5K	2,500	.5 lb	4 (1000 lb) Capacity Stainless steel load cells	304 Stainless steel	Yes	LS-7510-LED or LCD
LS-800-SS-LT-7X7-5K	5,000	1 lb	4 (2500 lb) Capacity Stainless steel load cells	304 Stainless steel	Yes	LS-7510-LED or LCD
LS-800-SS-LT-7X7-10K	10,000	2 lb	4 (5000 lb) Capacity Stainless steel load cells	304 Stainless steel	Yes	LS-7510-LED or LCD

## DIAMOND PLATE SURFACE MODEL

MODELS	CAPACITY in lb	ACCURACY	LOAD CELLS USED	SCALE BASE MATERIAL	NTEP	INDICATOR
LS-800-SS-LTDP-3X3-1K	1,000	.2 lb	4 (500 lb) Capacity Stainless steel load cells	304 Stainless steel	Yes	LS-7510-LED or LCD
LS-800-SS-LTDP-3X3-2.5K	2,500	.5 lb	4 (1000 lb) Capacity Stainless steel load cells	304 Stainless steel	Yes	LS-7510-LED or LCD
LS-800-SS-LTDP-3X3-5K	5,000	1 lb	4 (2500 lb) Capacity Stainless steel load cells	304 Stainless steel	Yes	LS-7510-LED or LCD
LS-800-SS-LTDP-4X4-1K	1,000	.2 lb	4 (500 lb) Capacity Stainless steel load cells	304 Stainless steel	Yes	LS-7510-LED or LCD
LS-800-SS-LTDP-4X4-2.5K	2,500	.5 lb	4 (1000 lb) Capacity Stainless steel load cells	304 Stainless steel	Yes	LS-7510-LED or LCD
LS-800-SS-LTDP-4X4-5K	5,000	1 lb	4 (2500 lb) Capacity Stainless steel load cells	304 Stainless steel	Yes	LS-7510-LED or LCD
LS-800-SS-LTDP-4X4-10K	10,000	2 lb	4 (5000 lb) Capacity Stainless steel load cells	304 Stainless steel	Yes	LS-7510-LED or LCD
LS-800-SS-LTDP-4X5-1K	1,000	.2 lb	4 (500 lb) Capacity Stainless steel load cells	304 Stainless steel	Yes	LS-7510-LED or LCD
LS-800-SS-LTDP-4X5-2.5K	2,500	.5 lb	4 (1000 lb) Capacity Stainless steel load cells	304 Stainless steel	Yes	LS-7510-LED or LCD
LS-800-SS-LTDP-4X5-5K	5,000	1 lb	4 (2500 lb) Capacity Stainless steel load cells	304 Stainless steel	Yes	LS-7510-LED or LCD
LS-800-SS-LTDP-4X5-10K	10,000	2 lb	4 (5000 lb) Capacity Stainless steel load cells	304 Stainless steel	Yes	LS-7510-LED or LCD
LS-800-SS-LTDP-4X6-1K	1,000	.2 lb	4 (500 lb) Capacity Stainless steel load cells	304 Stainless steel	Yes	LS-7510-LED or LCD
LS-800-SS-LTDP-4X6-2.5K	2,500	.5 lb	4 (1000 lb) Capacity Stainless steel load cells	304 Stainless steel	Yes	LS-7510-LED or LCD
LS-800-SS-LTDP-4X6-5K	5,000	1 lb	4 (2500 lb) Capacity Stainless steel load cells	304 Stainless steel	Yes	LS-7510-LED or LCD
LS-800-SS-LTDP-4X6-10K	10,000	2 lb	4 (5000 lb) Capacity Stainless steel load cells	304 Stainless steel	Yes	LS-7510-LED or LCD
LS-800-SS-LTDP-4X8-1K	1,000	.2 lb	4 (500 lb) Capacity Stainless steel load cells	304 Stainless steel	Yes	LS-7510-LED or LCD
LS-800-SS-LTDP-4X8-2.5K	2,500	.5 lb	4 (1000 lb) Capacity Stainless steel load cells	304 Stainless steel	Yes	LS-7510-LED or LCD
LS-800-SS-LTDP-4X8-5K	5,000	1 lb	4 (2500 lb) Capacity Stainless steel load cells	304 Stainless steel	Yes	LS-7510-LED or LCD
LS-800-SS-LTDP-4X8-10K	10,000	2 lb	4 (5000 lb) Capacity Stainless steel load cells	304 Stainless steel	Yes	LS-7510-LED or LCD
LS-800-SS-LTDP-5X5-1K	1,000	.2 lb	4 (500 lb) Capacity Stainless steel load cells	304 Stainless steel	Yes	LS-7510-LED or LCD
LS-800-SS-LTDP-5X5-2.5K	2,500	.5 lb	4 (1000 lb) Capacity Stainless steel load cells	304 Stainless steel	Yes	LS-7510-LED or LCD
LS-800-SS-LTDP-5X5-5K	5,000	1 lb	4 (2500 lb) Capacity Stainless steel load cells	304 Stainless steel	Yes	LS-7510-LED or LCD
LS-800-SS-LTDP-5X5-10K	10,000	2 lb	4 (5000 lb) Capacity Stainless steel load cells	304 Stainless steel	Yes	LS-7510-LED or LCD

MODELS	CAPACITY in lb	ACCURACY	LOAD CELLS USED	SCALE BASE MATERIAL	NTEP	INDICATOR
LS-800-SS-LTDP-5X7-1K	1,000	.2 lb	4 (500 lb) Capacity Stainless steel load cells	304 Stainless steel	Yes	LS-7510-LED or LCD
LS-800-SS-LTDP-5X7-2.5K	2,500	.5 lb	4 (1000 lb) Capacity Stainless steel load cells	304 Stainless steel	Yes	LS-7510-LED or LCD
LS-800-SS-LTDP-5X7-5K	5,000	1 lb	4 (2500 lb) Capacity Stainless steel load cells	304 Stainless steel	Yes	LS-7510-LED or LCD
LS-800-SS-LTDP-5X7-10K	10,000	2 lb	4 (5000 lb) Capacity Stainless steel load cells	304 Stainless steel	Yes	LS-7510-LED or LCD
LS-800-SS-LTDP-5X8-1K	1,000	.2 lb	4 (500 lb) Capacity Stainless steel load cells	304 Stainless steel	Yes	LS-7510-LED or LCD
LS-800-SS-LTDP-5X8-2.5K	2,500	.5 lb	4 (1000 lb) Capacity Stainless steel load cells	304 Stainless steel	Yes	LS-7510-LED or LCD
LS-800-SS-LTDP-5X8-5K	5,000	1 lb	4 (2500 lb) Capacity Stainless steel load cells	304 Stainless steel	Yes	LS-7510-LED or LCD
LS-800-SS-LTDP-5X8-10K	10,000	2 lb	4 (5000 lb) Capacity Stainless steel load cells	304 Stainless steel	Yes	LS-7510-LED or LCD
LS-800-SS-LTDP-6X6-1K	1,000	.2 lb	4 (500 lb) Capacity Stainless steel load cells	304 Stainless steel	Yes	LS-7510-LED or LCD
LS-800-SS-LTDP-6X6-2.5K	2,500	.5 lb	4 (1000 lb) Capacity Stainless steel load cells	304 Stainless steel	Yes	LS-7510-LED or LCD
LS-800-SS-LTDP-6X6-5K	5,000	1 lb	4 (2500 lb) Capacity Stainless steel load cells	304 Stainless steel	Yes	LS-7510-LED or LCD
LS-800-SS-LTDP-6X6-10K	10,000	2 lb	4 (5000 lb) Capacity Stainless steel load cells	304 Stainless steel	Yes	LS-7510-LED or LCD
LS-800-SS-LTDP-7X7-1K	1,000	.2 lb	4 (500 lb) Capacity Stainless steel load cells	304 Stainless steel	Yes	LS-7510-LED or LCD
LS-800-SS-LTDP-7X7-2.5K	2,500	.5 lb	4 (1000 lb) Capacity Stainless steel load cells	304 Stainless steel	Yes	LS-7510-LED or LCD
LS-800-SS-LTDP-7X7-5K	5,000	1 lb	4 (2500 lb) Capacity Stainless steel load cells	304 Stainless steel	Yes	LS-7510-LED or LCD
LS-800-SS-LTDP-7X7-10K	10,000	2 lb	4 (5000 lb) Capacity Stainless steel load cells	304 Stainless steel	Yes	LS-7510-LED or LCD





## FEATURES

- High Quality Made in the USA carbon Steel diamond plate construction.
- NEMA 4X watertight stainless steel junction box
- Top Access to feet & junction box for ease of adjustments or access.
- Load cell capacity is 2X the scale capacity for a 200% overload protection
- Four NTEP certified alloy steel load cells with adjustable Swivel feet
- 15' heavy duty stainless steel shielded cable
- Factory Pre-calibrated in USA
- 5 year warranty!

## OPTIONAL ACCESSORIES

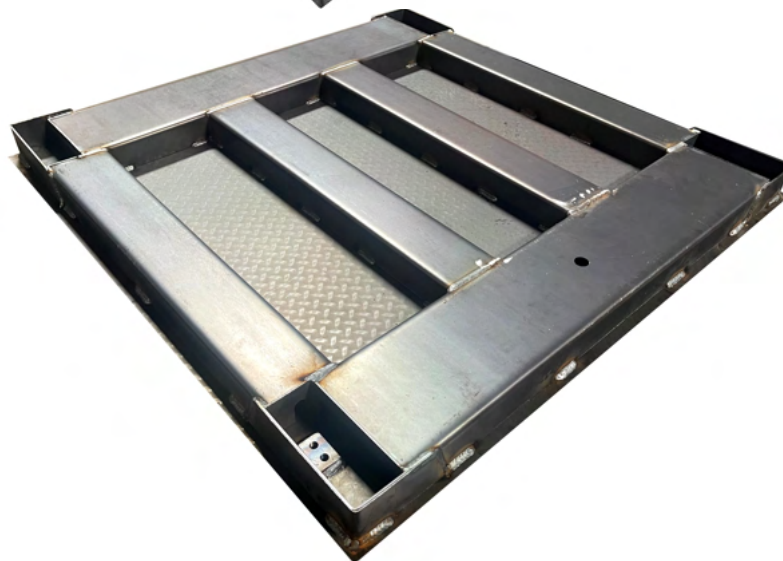
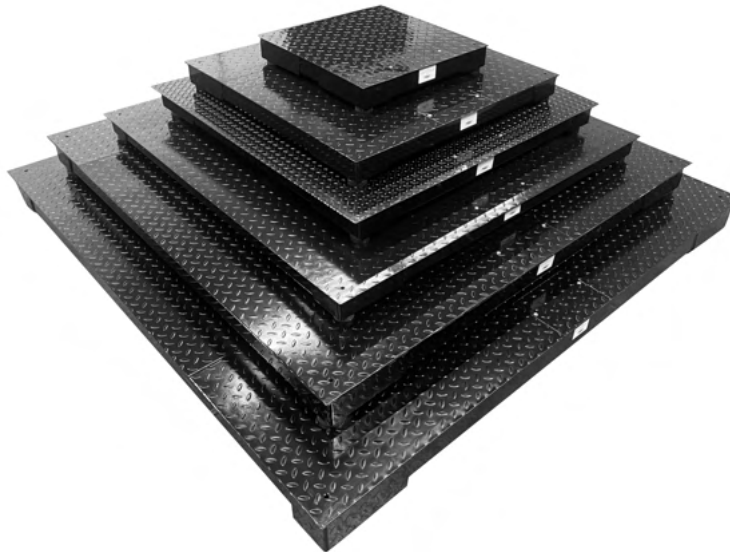
- Thermal printers
- Scoreboard (Large Display)
- Pit-frame or portability frames
- Data Collection Software
- Access Ramps
- Indicator stands
- Explosion proof upgrade
- Water-resistant upgrades
- Bumper Guards (Impact protection)
- Output systems (4-20ma or 0-5V Relay)
- Wireless (Cordless connection)

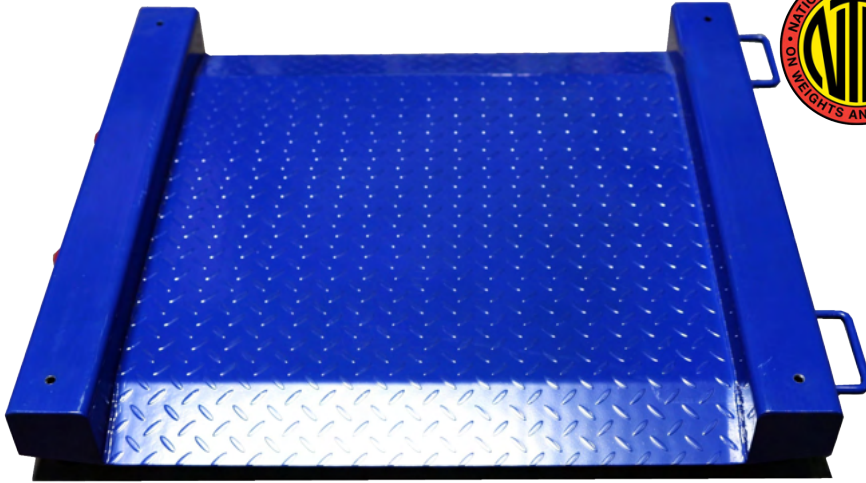
MODELS	CAPACITY in lb	ACCURACY	LOAD CELLS USED	SCALE BASE MATERIAL	NTEP	MANUFACTURED IN
LS-900-2X2-1K	1,000	.2 lb	24" x 24" ( 2' x 2' )	Carbon Steel / Diamond plate	Yes	USA
LS-900-2X2-2.5K	2,500	.5 lb	24" x 24" ( 2' x 2' )	Carbon Steel / Diamond plate	Yes	USA
LS-900-2X2-5K	5,000	1 lb	24" x 24" ( 2' x 2' )	Carbon Steel / Diamond plate	Yes	USA
LS-900-2X3-1K	1,000	.2 lb	24" x 36" ( 2' x 3' )	Carbon Steel / Diamond plate	Yes	USA
LS-900-2X3-2.5K	2,500	.5 lb	24" x 36" ( 2' x 3' )	Carbon Steel / Diamond plate	Yes	USA
LS-900-2X3-5K	5,000	1 lb	24" x 36" ( 2' x 3' )	Carbon Steel / Diamond plate	Yes	USA

MODELS	CAPACITY in lb	ACCURACY	FLOOR SCALE SIZE	SCALE BASE MATERIAL	NTEP	MANUFACTURED IN
LS-900-3X3-1K	1,000	.2 lb	36" x 36" ( 3' x 3' )	Carbon Steel / Diamond plate	Yes	USA
LS-900-3X3-2.5K	2,500	.5 lb	36" x 36" ( 3' x 3' )	Carbon Steel / Diamond plate	Yes	USA
LS-900-3X3-5K	5,000	1 lb	36" x 36" ( 3' x 3' )	Carbon Steel / Diamond plate	Yes	USA
LS-900-4X4-1K	1,000	.2 lb	48" x 48" ( 4' x 4' )	Carbon Steel / Diamond plate	Yes	USA
LS-900-4X4-2.5K	2,500	.5 lb	48" x 48" ( 4' x 4' )	Carbon Steel / Diamond plate	Yes	USA
LS-900-4X4-5K	5,000	1 lb	48" x 48" ( 4' x 4' )	Carbon Steel / Diamond plate	Yes	USA
LS-900-4X4-10K	10,000	2 lb	48" x 48" ( 4' x 4' )	Carbon Steel / Diamond plate	Yes	USA
LS-900-4X5-1K	1,000	.2 lb	48" x 60" ( 4' x 5' )	Carbon Steel / Diamond plate	Yes	USA
LS-900-4X5-2.5K	2,500	.5 lb	48" x 60" ( 4' x 5' )	Carbon Steel / Diamond plate	Yes	USA
LS-900-4X5-5K	5,000	1 lb	48" x 60" ( 4' x 5' )	Carbon Steel / Diamond plate	Yes	USA
LS-900-4X5-10K	10,000	2 lb	48" x 60" ( 4' x 5' )	Carbon Steel / Diamond plate	Yes	USA
LS-900-4X6-1K	1,000	.2 lb	48" x 72" ( 4' x 6' )	Carbon Steel / Diamond plate	Yes	USA
LS-900-4X6-2.5K	2,500	.5 lb	48" x 72" ( 4' x 6' )	Carbon Steel / Diamond plate	Yes	USA
LS-900-4X6-5K	5,000	1 lb	48" x 72" ( 4' x 6' )	Carbon Steel / Diamond plate	Yes	USA
LS-900-4X6-10K	10,000	2 lb	48" x 72" ( 4' x 6' )	Carbon Steel / Diamond plate	Yes	USA
LS-900-4X8-1K	1,000	.2 lb	48" x 96" ( 4' x 8' )	Carbon Steel / Diamond plate	Yes	USA
LS-900-4X8-2.5K	2,500	.5 lb	48" x 96" ( 4' x 8' )	Carbon Steel / Diamond plate	Yes	USA
LS-900-4X8-5K	5,000	1 lb	48" x 96" ( 4' x 8' )	Carbon Steel / Diamond plate	Yes	USA
LS-900-4X8-10K	10,000	2 lb	48" x 96" ( 4' x 8' )	Carbon Steel / Diamond plate	Yes	USA
LS-900-5X5-1K	1,000	.2 lb	60" x 60" ( 5' x 5' )	Carbon Steel / Diamond plate	Yes	USA
LS-900-5X5-2.5K	2,500	.5 lb	60" x 60" ( 5' x 5' )	Carbon Steel / Diamond plate	Yes	USA
LS-900-5X5-5K	5,000	1 lb	60" x 60" ( 5' x 5' )	Carbon Steel / Diamond plate	Yes	USA
LS-900-5X5-10K	10,000	2 lb	60" x 60" ( 5' x 5' )	Carbon Steel / Diamond plate	Yes	USA
LS-900-5X7-1K	1,000	.2 lb	60" x 84" ( 5' x 7' )	Carbon Steel / Diamond plate	Yes	USA
LS-900-5X7-2.5K	2,500	.5 lb	60" x 84" ( 5' x 7' )	Carbon Steel / Diamond plate	Yes	USA
LS-900-5X7-5K	5,000	1 lb	60" x 84" ( 5' x 7' )	Carbon Steel / Diamond plate	Yes	USA
LS-900-5X7-10K	10,000	2 lb	60" x 84" ( 5' x 7' )	Carbon Steel / Diamond plate	Yes	USA
LS-900-5X8-1K	1,000	.2 lb	60" x 96" ( 5' x 8' )	Carbon Steel / Diamond plate	Yes	USA
LS-900-5X8-2.5K	2,500	.5 lb	60" x 96" ( 5' x 8' )	Carbon Steel / Diamond plate	Yes	USA
LS-900-5X8-5K	5,000	1 lb	60" x 96" ( 5' x 8' )	Carbon Steel / Diamond plate	Yes	USA



MODELS	CAPACITY in lb	ACCURACY	FLOOR SCALE SIZE	SCALE BASE MATERIAL	NTEP	MANUFACTURED IN
LS-900-5X8-10K	10,000	2 lb	60" x 96" ( 5' x 8' )	Carbon Steel / Diamond plate	Yes	USA
LS-900-6X6-1K	1,000	.2 lb	72" x 72" ( 6' x 6' )	Carbon Steel / Diamond plate	Yes	USA
LS-900-6X6-2.5K	2,500	.5 lb	72" x 72" ( 6' x 6' )	Carbon Steel / Diamond plate	Yes	USA
LS-900-6X6-5K	5,000	1 lb	72" x 72" ( 6' x 6' )	Carbon Steel / Diamond plate	Yes	USA
LS-900-6X6-10K	10,000	5 lb	72" x 72" ( 6' x 6' )	Carbon Steel / Diamond plate	Yes	USA
LS-900-7X7-1K	1,000	.2 lb	84" x 84" ( 7' x 7' )	Carbon Steel / Diamond plate	Yes	USA
LS-900-7X7-2.5K	2,500	.5 lb	84" x 84" ( 7' x 7' )	Carbon Steel / Diamond plate	Yes	USA
LS-900-7X7-5K	5,000	1 lb	84" x 84" ( 7' x 7' )	Carbon Steel / Diamond plate	Yes	USA
LS-900-7X7-10K	10,000	2 lb	84" x 84" ( 7' x 7' )	Carbon Steel / Diamond plate	Yes	USA





## FEATURES

- ✓ Powder coated steel construction with rugged diamond tread safety plate (standard model)
- ✓ 304 stainless steel washdown construction (316 stainless steel available)
- ✓ Complete scale and indicator package
- ✓ Height adjustable leveling feet
- ✓ Features a spacious platform with two way, easy access integrated ramps
- ✓ Live rails allows for weighing by placing a pallet across the rails
- ✓ Built-in carry handles and wheels (makes it portable and easy to transport the scale)
- ✓ Ultra low profile allows easy loading of heavy items
- ✓ Drum and barrel weighing, warehouse shipping & receiving, container weighing, pallet & skid weighing, and many other industrial applications
- ✓ 20' shielded metal cable included
- ✓ Anti-corrosion, baked on powder paint
- ✓ Factory pre-calibrated for quick setup
- ✓ NTEP COC #: 22-056

## SPECIFICATIONS

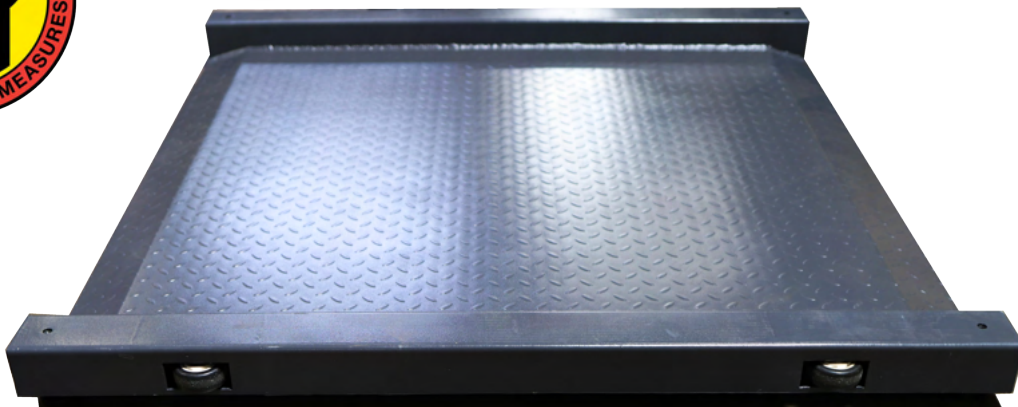
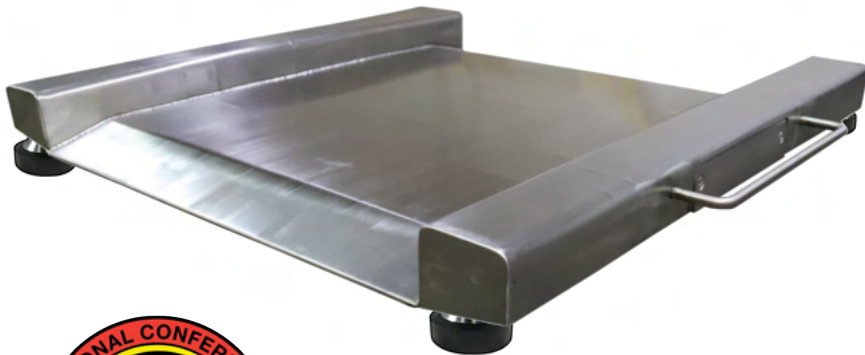
Material: Mild Steel / Stainless Steel  
 Overloaded Protection: 200%  
 Power: AC/DC  
 Capacity: 1,000 lbs - 5,000 lbs  
 Height: 1.5 in  
 Ramp Length: 4 in  
 Cable Length: 20 ft  
 Warranty: 5 year limited

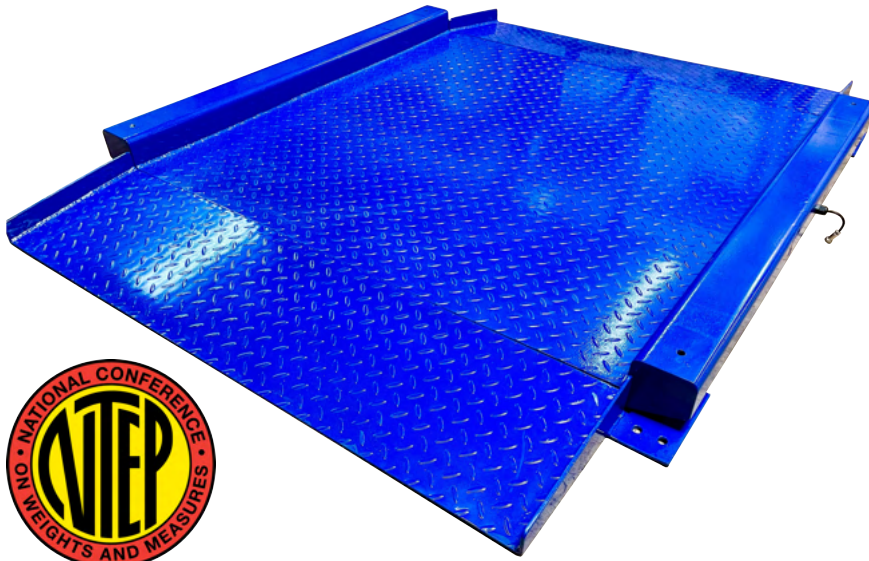
MODELS	CAPACITY in lb	ACCURACY	PLATFORM SIZE	OVERALL SIZE	INDICATOR
LS-917-24X30-1K	1,000	.2 lb	24" W x 30" L x 1.5" H	32" W x 38" L x 3.5" H	LS-7510-LED or LCD
LS-917-24X30-2K	2,000	.5 lb	24" W x 30" L x 1.5" H	32" W x 38" L x 3.5" H	LS-7510-LED or LCD
LS-917-27X27-1K	1,000	.2 lb	27" W x 27" L x 1.5" H	35" W x 35" L x 3.5" H	LS-7510-LED or LCD
LS-917-27X27-2K	2,000	.5 lb	27" W x 27" L x 1.5" H	35" W x 35" L x 3.5" H	LS-7510-LED or LCD
LS-917-31X31-1K	1,000	.2 lb	31" W x 31" L x 1.5" H	49" W x 49" L x 3.5" H	LS-7510-LED or LCD
LS-917-31X31-2K	2,000	.5 lb	31" W x 31" L x 1.5" H	49" W x 49" L x 3.5" H	LS-7510-LED or LCD

MODELS	CAPACITY in lb	ACCURACY	PLATFORM SIZE	OVERALL SIZE	INDICATOR
LS-917-36X36-1K	1,000	.2 lb	36" W x 36" L x 1.2" H	54" W x 54" L x 3.5" H	LS-7510-LED or LCD
LS-917-36X36-2K	2,000	.5 lb	36" W x 36" L x 1.2" H	54" W x 54" L x 3.5" H	LS-7510-LED or LCD
LS-917-48X52-5K	5,000	1 lb	48" W x 52" L x 1.2" H	56" W x 60" L x 3.5" H	LS-7510-LED or LCD

**STAINLESS STEEL MODELS**

MODELS	CAPACITY in lb	ACCURACY	PLATFORM SIZE	OVERALL SIZE	INDICATOR
LS-917-SS-28X28-1K	1,000	.2 lb	28" W x 28" L x 1.2" H	36" W x 36" L x 3.5" H	LS-7510-LED or LCD
LS-917-SS-28X28-2K	2,000	.5 lb	28" W x 28" L x 1.2" H	36" W x 36" L x 3.5" H	LS-7510-LED or LCD





## FEATURES

- ✓ Powder coated steel construction with a rugged diamond safety deck for traction
- ✓ Features a spacious ultra low platform with two way, easy access ramps for easy incline ramping
- ✓ Live rails allows for weighing by placing a pallet across the rails
- ✓ Height adjustable leveling feet
- ✓ The scale fits through standard doors and can go wherever you need it for weighing drums, barrels, industrial containers and small crates
- ✓ Ultra low profile allows easy loading for heavy items
- ✓ Drum and barrel weighing, warehouse shipping & receiving, contain weighing, pallet & skid weighing, and many other industrial applications
- ✓ 20' shielded metal cable included
- ✓ Anti-corrosion, baked-on powder paint
- ✓ Factory pre-calibrated for quick setup
- ✓ NTEP COC #: 22-056

## ACCESSORIES

- Indicators
- Data logging software
- Label/Table printer
- Indicator stand
- Scoreboard

## SPECIFICATIONS

- Material: Painted Steel
- Overloaded Protection: 200%
- Power: AC/DC
- Capacity: 5,000 lbs
- Height: 1.2 in
- Ramp Length: 12 in
- Cable Length: 20 ft
- Warranty: 5 year limited

MODELS	CAPACITY in lb	ACCURACY	PLATFORM SIZE	OVERALL SIZE	INDICATOR
LS-917-R-30X30-1K	1,000	.2 lb	30" W x 30" L x 1.2" H	38" W x 54" L x 3.5" H	LS-7510-LED or LCD
LS-917-R-30X30-5K	5,000	1 lb	30" W x 30" L x 1.2" H	38" W x 54" L x 3.5" H	LS-7510-LED or LCD
LS-917-R-36X36-1K	1,000	.2 lb	36" W x 36" L x 1.2" H	44" W x 60" L x 3.5" H	LS-7510-LED or LCD
LS-917-R-36X36-5K	5,000	1 lb	36" W x 36" L x 1.2" H	44" W x 60" L x 3.5" H	LS-7510-LED or LCD
LS-917-R-48X48-1K	1,000	.2 lb	48" W x 48" L x 1.2" H	56" W x 72" L x 3.5" H	LS-7510-LED or LCD
LS-917-R-48X48-5K	5,000	1 lb	48" W x 48" L x 1.2" H	56" W x 72" L x 3.5" H	LS-7510-LED or LCD



**HEAVY-DUTY METAL CABLES**  
with water-proof protective  
outer coating

**FEATURES**

- Twin module rugged steel deck construction
- 1.25' long wrap around ramps for easy access and eliminates the need for a scale pit
- Ultra low 3" profile allows easy loading of heavy items
- Powder coat finish
- Complete scale and indicator package
- Indoor or outdoor usage
- Perfect for cargo dolly weighing
- Set up is simple and allows for easy relocation
- Load cell capacity is 2X the scale capacity for a 200% overload protection
- Four NTEP certified alloy steel load cells
- 45' heavy duty metal shielded cable
- Factory pre-calibrated for quick setup

**OPTIONAL ACCESSORIES**

- Data logging software
- Label/Table printer
- Indicator Upgrade
- Indicator stand
- Scoreboard



Continuous welding  
Multiple steel channels



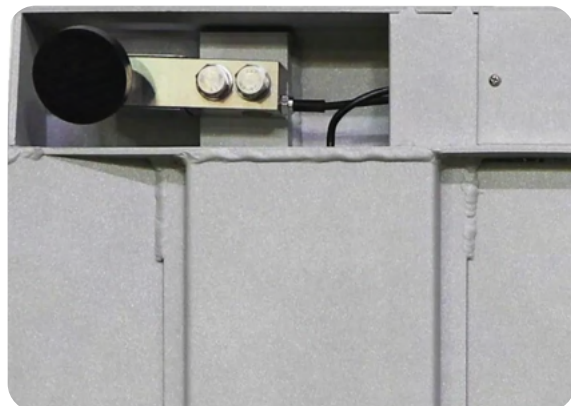
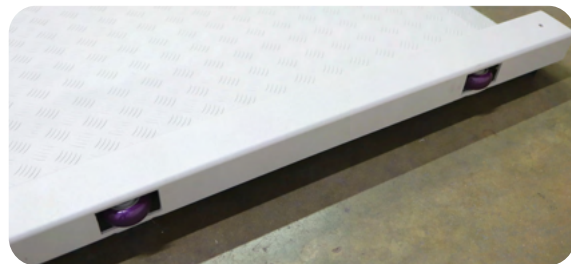
Airport Installation



Ideal for weighing Cargo Loads

**SPECIFICATIONS**

PART#	LS-960-2057	LS-960-4057	LS-960-201010
CAPACITY	20,000 lb x 2 lb	40,000 lb x 5 lb	20,000 lb x 2 lb
PLATFORM SIZE	5' x 7' x 2.87" H	5' x 7' x 2.87" H	10' x 10' x 2.87" H
RAMP LENGTH	1.25 ft		
OVERALL SIZE	7.5ft x 8.5ft	7.5ft x 8.5ft	12.5ft x 12.5ft
INDICATOR	NTEP LS-7510 (upgrades available)		



## FEATURES

- Made from aluminum to be lightweight (91 lb)
- Leveling feet, collapsible stand, wheels and handles to make it as portable and storable as ever
- Easy setup, all you need to do is unfold and plugin
- Built-in lips for easy access onto low profile scale
- Diamond plated for better traction
- Four alloy steel load cells
- Load cell capacity is 2X the scale capacity for overload protection
- Heavy-duty metal shielded quick connecting cable
- Complete scale and indicator package
- Screw-in feet for leveling
- Collapsible stand/handle for easy storing
- Handles and wheels on the sides for easy portability
- Channel construction for superior strength
- The indicator comes with an AC adapter but can be powered with AA batteries for cordless option
- Factory pre-calibrated for quick setup

## SPECIFICATIONS

Material: Aluminum  
 Overloaded Protection: 200%  
 Indicator: LS-7515-C  
 Power: AC/DC, or AA batteries  
 Units: lb and kg switchable  
 Capacity: 1,000 lbs  
 Weight: 91 lbs  
 Outer size: ( scale shell itself )  
 47.5" x 47.5" x 4"  
 Inner size: ( platform wheelchair  
 will sit in ) 39.5" x 39.5"  
 Warranty: 5-year limited