

# ***QUICK START GUIDE***

## ***JUST ADD WATER***

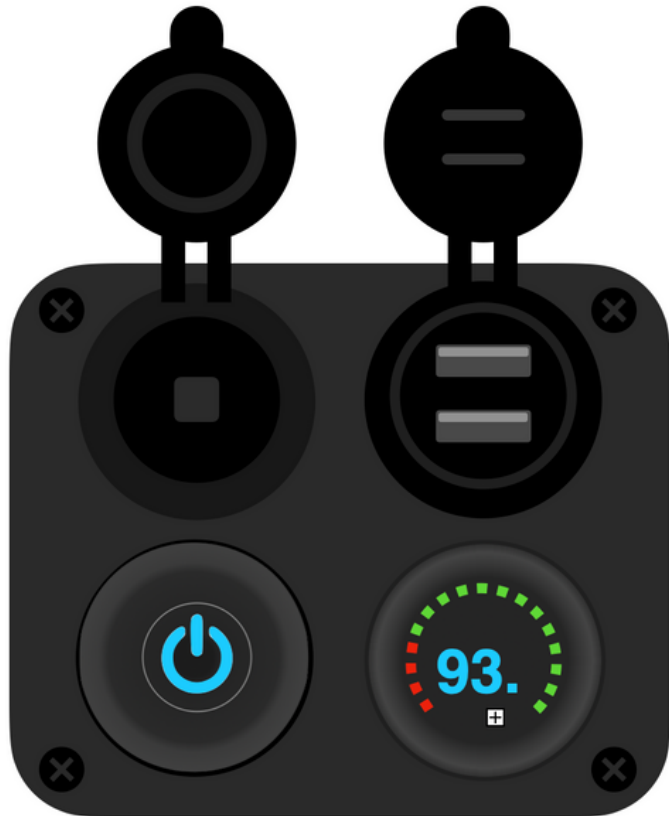
Remove the water tank cap and add clean water to the tank.

## ***PUSH POWER***

Your RinseKit comes fully charged. Just push the power button.

## ***SPRAY***

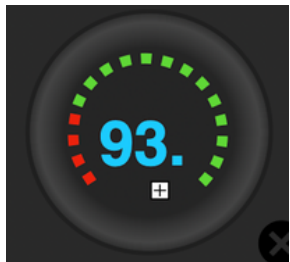
Turn the on/off valve to the "ON" position and spray!



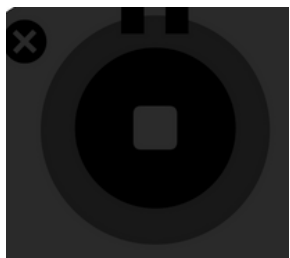
# CONTROL PANEL



Press power button to turn on system. Only power on when there is water in the tank. The ON/OFF valve must be in the "ON" position to spray.



The LED display panel reads the temperature of the water within the unit. The outer ring shows battery life. For optimal use, charge the unit only when it has entered the red.



To charge battery, open water cover and plug in car or wall charger into the charging port. Keep the cover closed when not in use.

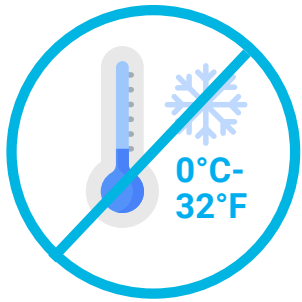


USB ports can be used for charging external devices. Keep cover closed when not in use.

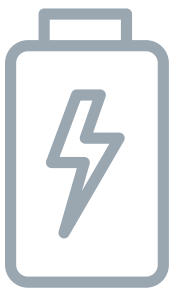
# WARNINGS & CARE INSTRUCTIONS



**DO NOT USE SPRAY FUNCTION WHEN TANK IS EMPTY.** The pump will not automatically turn off if the water tank is empty. Running the pump dry for more than a few minutes



**FREEZING CONDITIONS WILL DAMAGE YOUR RINSEKIT.** For cold conditions or longterm storage, drain all of the water out of the tank, then keep nozzle on for 30 seconds to allow the pump to push all of the water out of the system



- Periodically empty and air dry your unit
- Do not freeze
- Only fill with clean water between 33°F- 120°F
- Spray vinegar through unit to clean the internal parts

# **WARNINGS & CARE INSTRUCTIONS**

## **DO NOT USE SPRAY FUNCTION WHEN TANK IS EMPTY**

The pump will not automatically turn off if the water tank is empty. Running the pump dry for more than a few minutes

## **FREEZING CONDITIONS WILL DAMAGE YOUR RINSEKIT**

For cold conditions or longterm storage, drain all of the water out of the tank, then keep nozzle on for 30 seconds to allow the pump to push all of the water out of the system

## **ONLY FILL THE UNIT WITH CLEAN WATER**

- Only fill with clean water between 33°F- 120°F
- To clean the internal parts, pour a small amount of vinegar into the tank and spray until empty.
- Periodically drain your RinseKit and allow it to air dry

## **YOUR RINSEKIT COMES WITH A WARRANTY**

For more information, please visit [www.RinseKit.com](http://www.RinseKit.com) and click on the Warranty Tab.

Note: Receipt/Proof of Purchase will be required to file a warranty claim