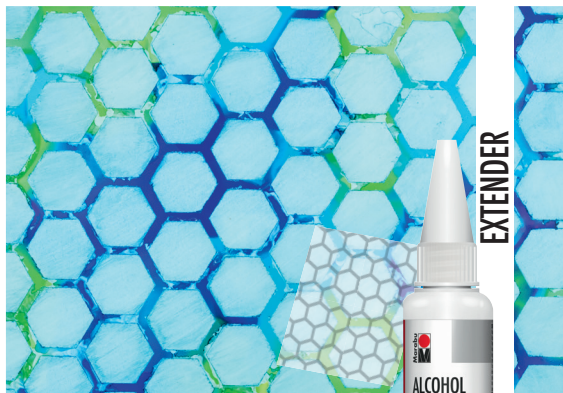


# COLOR SPLASH



Drip desired color on surface and add a little Extender on top or beside it. Carefully blow the ink outward with a straw or canned air to create streaks and splashes. Repeat the process with additional colors until you have a beautiful abstract flower burst.

# WIPE STENCILING



Apply colors randomly across the surface and let dry. Wet a paper towel with Extender. Rub it through a stencil placed on top to remove some color and create a ghost pattern.



# ALCOHOL INK



Marabu Creative Colours

2460-A Remount Road | North Charleston, SC 29406

Phone: (888) 253-2778 | marabucreativeusa.com

creative@marabu.com



#madewithmarabu



59119 209 00007

06/2020

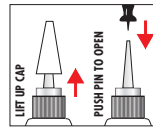
**CREATE FLOWS OF COLOR AND LAYERS OF POSSIBILITIES!**

Vibrant and versatile, alcohol inks allow you to create stunning works of art on a variety of surfaces.



## MARABU ALCOHOL INK

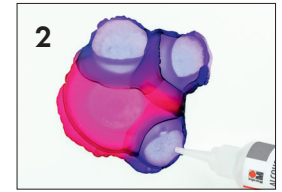
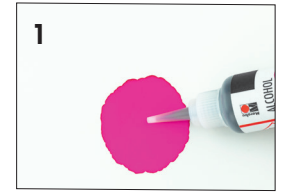
Create stunning works of art on a variety of surfaces with vibrant and versatile Alcohol Inks. Use the colors on their own or blend them together for infinitely creative possibilities. The uniquely magical Rainbow and color-shifting Glitter colors add a mesmerizing shimmer effect. The Extender increases the inks' open time, lightens and lifts colors, and increases transparency. Alcohol Inks are permanent, fast-drying, acid-free, and blendable. They are transparent, dye-based colors (exceptions: metallics, Rainbow, and Glitter colors.) 20 ml bottles feature a narrow precision tip.



<b>020</b> Lemon		<b>297</b> Aqua Green		<b>719</b> Metallic Yellow	
<b>222</b> Vanilla		<b>158</b> Apple		<b>733</b> Metallic Pink	
<b>225</b> Tangerine		<b>276</b> Agave		<b>750</b> Metallic Violet	
<b>023</b> Red Orange		<b>065</b> Olive Green		<b>752</b> Metallic Blue	
<b>031</b> Cherry Red		<b>163</b> Cinnamon		<b>767</b> Metallic Green	
<b>034</b> Bordeaux		<b>294</b> Caramel		<b>782</b> Metallic Silver	
<b>014</b> Magenta		<b>285</b> Brown		<b>784</b> Metallic Gold	
<b>004</b> Garnet Red		<b>073</b> Black		<b>789</b> Metallic Bronze	
<b>211</b> Purple		<b>510</b> Rainbow		<b>786</b> Metallic Copper	
<b>081</b> Amethyst		<b>070</b> White		<b>514</b> Glitter Gold-Bronze-Green	
<b>291</b> Arctic		<b>321</b> Neon Yellow		<b>515</b> Glitter Violet-Blue-Green	
<b>091</b> Caribbean		<b>324</b> Neon Orange		<b>516</b> Glitter Blue-Green-Gold	
<b>098</b> Turquoise		<b>334</b> Neon Pink		<b>518</b> Glitter Pink-Green-Gold	
<b>057</b> Gentian		<b>355</b> Neon Blue		<b>810</b> Extender	

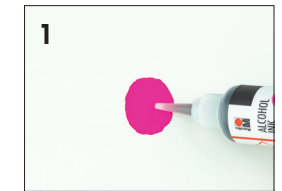
Number of Colors Available	41 + Extender
Most Permanent Workable Surfaces	Synthetic and glossy papers, ceramic, glass, metal, plastic, vinyl, leather, and other non-porous or semi-porous surfaces
Techniques	Dripping drops, pouring, mixing, blending, wispy layers, masking, wipe stenciling, blowing, brushing
FAQs	<p>Bottles are shipped sealed to prevent leakage. To open, press and pull the white cap off. Use a push pin to carefully poke a small hole straight down through the applicator tip. For a larger hole, snip off the tip with scissors • The well around the rim of the applicator tip is designed to catch drips. After each use, wipe out the well to ensure precision placement of your ink drops • Keep bottles standing upright when capped to avoid spillage inside the well • The entire cap can be screwed off to pour out large amounts of ink, either directly onto your work, into other types of dispensers or onto a palette for color blending and brush work • Metallic colors and the Rainbow and Glitter additives must be shaken well before use. Leave the cap on while shaking or hold your finger over the applicator tip during use if the bottle is open. Shake the bottle from side to side, like ringing a bell, rather than up and down to prevent the ink from splattering. If you cannot hear the mixing ball moving inside the bottle while shaking, tap the bottom of the bottle a few times on your table to loosen the ball from the pigments that have settled • Inks are highly concentrated to give you more control in your work. To make the color extend further or "bloom", add the Extender medium. You can also use Isopropyl alcohol to spread color, if desired, though this may affect the adhesion qualities of the ink • Try a hair dryer, airbrush, canned air (used for dusting keyboards) or blowing through a straw to move the inks around • Work in a well-ventilated room. If you have sensitivity to the odor of alcohol inks, wear a respirator mask • Clean spills with isopropyl alcohol • Combustion of the inks is not recommended as this will produce byproducts that will be harmful such as soot, Co2, etc. • Do not use inks in spray bottles as inks contain alcohol, which should not be airborne • Alcohol Inks are acid-free and have a shelf life of five years</p>

## DROPS



Drip desired ink colors on the surface allowing some overlap so the edges of each drop bloom into each other. Add different inks on top to displace the first colors and create layers. Add drops of Extender to remove color and create white space.

## WISPY LAYERS



Drip desired ink colors on the surface. Add a few drops of Extender on top and gently blow the ink with a cool hair dryer to make delicate wisps of pale hues with dark borders. Repeat the process to create soft, striking patterns.

