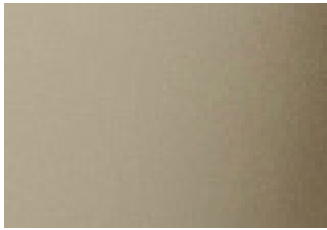


Kerrits Fabric Chart: Spring/Summer Tights & Breeches



Fabrisuede Tactel®

- Lightweight and breathable
- Brushed for softness but wears like iron
- Moisture wicking and quick drying
- Resists pilling and odor

Find it in

- Flow Rise KP Performance Tight



SoftTek™

- Four-way stretch knit fits and flatters
- Exceptional shape retention
- Highly breathable and moisture wicking
- Lightly brushed for comfort

Find it in

- Freestyle Pocket Tight



Durabreath™

- Durable exterior resists abrasion; sheds dirt and hay with ease
- Four-way stretch-knit provides light-weight coverage
- Twill back is moisture wicking and quick drying next to skin

Find it in

- Flex 3.0 FS Tight

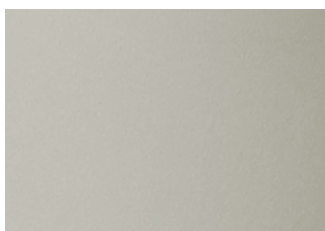


Ice Fil® Knit

- Cools by reducing skin's temp up to five degrees
- Four-way stretch for comfort
- UPF 50+ sun protection

Find it in

- Ice Fil® FS Tech Tight
- Ice Fil® FS Bootcut FS/KP Breech

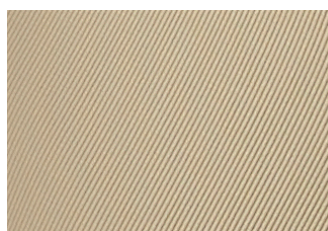


Ice Fil® Woven

- Special Ice Fil® application converts sweat to cooling energy
- Stretch-woven with excellent shape retention
- Mid-weight for flattering coverage

Find it in

- Affinity™ Ice Fil® KP/FS Breech



Microcord™

- Durable, mid-weight rib fabric provides flattering coverage
- Light compression hugs your muscles to prevent fatigue
- Soft inside for next to skin comfort

Find it in

- Microcord FS/KP Tight
- Microcord FS Bootcut
- Microcord Extended KP Bootcut



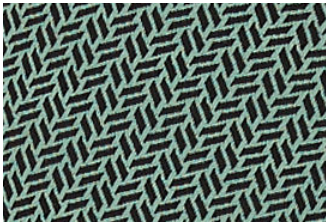
Dynamic™ Extreme

- Light-weight stretch woven
- Durable, abrasion resistant surface repels dirt and stains
- Twill back is moisture wicking and quick drying next to skin

Find it in

- Crossover II FS/KP Breech
- Griptek™ II Full Seat Breech

Kerrits Fabric Chart: Fall/Winter Tights & Breeches



Chevron Jacquard

- A lightweight fleece for cooler transition months
- Fleece-backed with Kerrits Chevron Jacquard design
- Four-way stretch integrity provides optimal mobility

Find it in

- Fleece Lite Tight KP

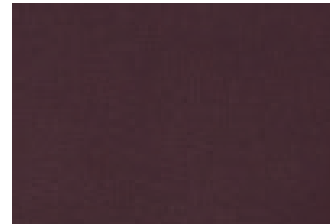


Thermo Tech™ Knit

- Four-way stretch, with lightly brushed interior
- Ideal choice for cooler weather
- Light compression for support and coverage

Find it in

- Thermo Tech™ Tight

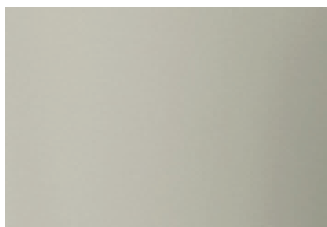


Polartec® Power Stretch®

- Thermal weight, fleeced interior
- Matte outer to shed dirt & hair
- Four-way stretch provides unrestricted movement

Find it in

- Power Stretch® FS/KP Pocket Tight



ClimaLuxe™

- Durable, stretch woven fabric is fleece-lined for warmth
- Wind and water-resistant exterior sheds dirt with ease

Find it in

- 3-Season Tailored Breech



Polartec® Wind Pro®

- Our warmest winter fabric
- Wind-resistant and water-repellent
- Tight knit construction reduces wind chill yet retains breathability

Find it in

- Sit Tight Wind Pro FS/KPTight
- Sit Tight Windpro Bootcut



HydroTek™ Storm Shell

- HydroTek™ storm shell is wind and waterproof; completely seam-sealed for all-weather protection

Find it in

- Cascade Waterproof Pant

Grip Chart

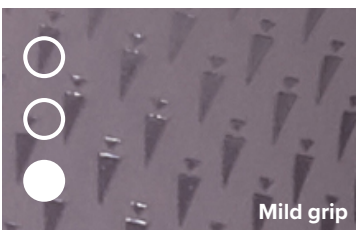


Eco Suede™

- 100% recycled ultra-microfiber
- Highly durable and abrasion resistant
- Brushed for added grip in the saddle

Find it in

- Flow Rise KP Performance Tight



Kerrit Sticks™

- Exclusive carrot pattern
- Highly flexible, low-profile
- Anti-slip provides equal ratio of stretch, stick and breathability

Find it in

- Ice Fil® FS Tech Tight
- Ice Fil® FS Bootcut

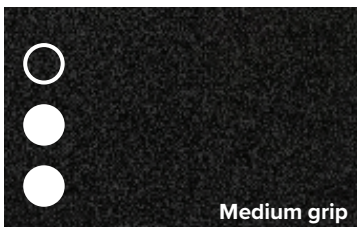


Kerrit Sticks™ Silicone

- Silicone carrot pattern is raised for increased grip and flexibility
- Stretches and breathes for maximum performance

Find it in

- Freestyle Pocket Tight
- Affinity™ Ice Fil® FS/KP Breech
- 3-Season Tailored KP Breech
- Power Stretch® KP/FS Pocket Tight

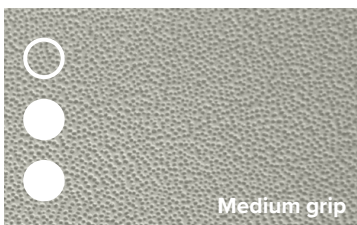


Gripstretch Suede™

- Synthetic suede is brushed to provide a technical grip with superior shape retention
- Mid-weight with light stretch

Find it in

- Flex 3.0 FS Tight
- Microcord FS/KP Tight
- Microcord FS Bootcut
- Sit Tight Wind Pro® FS/KP Tight
- Sit Tight Wind Pro® Bootcut

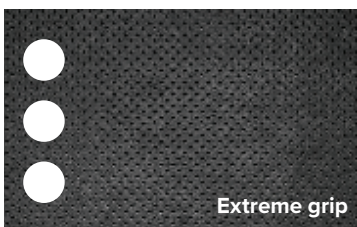


GripSoft™

- Soft and supple with a mid-level grip and lightweight feel
- Brushed interior wicks moisture to help keep skin cool and dry
- Light stretch conforms to your shape for a performance fit

Find it in

- Crossover II FS/KP Breech
- Stretch Denim Breech
- Fleece Lite KP Tight



Griptek™

- Provides a secure, no-slip-grip even when wet
- Lined with Coolmax™ for comfort, needle-punched for increased breathability
- Stretches for a custom fit

Find it in

- Griptek™ II FS Breech