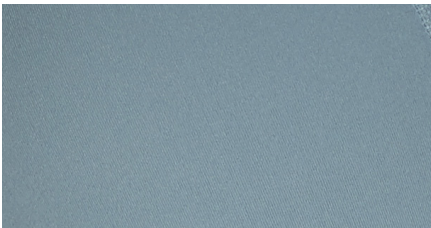




SPRING/SUMMER FABRICS + TECHNOLOGY

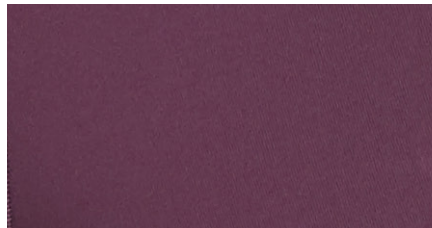


Fabrisuede Tactel®

- Lightweight and breathable
- Brushed for softness but wears like iron
- Moisture-wicking and quick-drying
- Resists pilling and odor

Find it in

- Flow Rise Knee Patch Performance Tight
- Momentum Knee Patch Pocket Tight



SoftTek™

- Four-way stretch knit provides flattering coverage and lightweight compression
- Exceptional shape retention
- Highly breathable and moisture-wicking

Find it in

- Free Style Knee Patch Pocket Tight

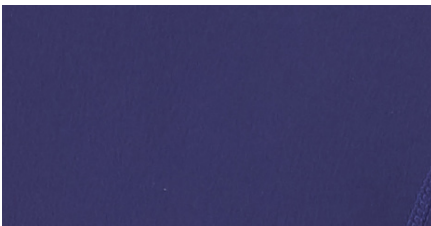


Flex&Sculpt™

- Woven fabric with excellent four-way stretch integrity
- Mid-weight offers confidence-inspiring coverage and support
- Durable enough to stand up to the rigors of daily riding

Find it in

- Arena K-Pro Knee Patch Breech
- Arena K-Pro Full Seat Breech

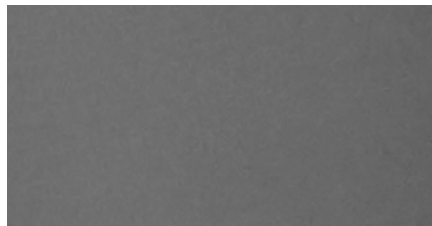


Ice Fil® Knit

- Cools by reducing skin's temp up to five degrees
- Four-way stretch for comfort
- UPF 50+ sun protection

Find it in

- Ice Fil® Full Seat Tech Tight
- Ice Fil® Full Seat Bootcut

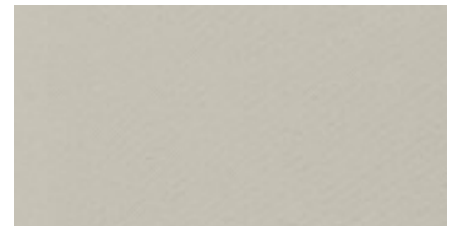


Durabreath™

- Four-way stretch-knit provides lightweight coverage
- Durable exterior is smooth, shedding dirt and hay with ease
- Twill back is moisture-wicking and quick-drying next to skin

Find it in

- Flex 3.0 Full Seat Tight



Dynamic™ Extreme

- Lightweight stretch woven that is highly breathable
- Durable, abrasion-resistant surface repels dirt and stains
- Twill back is moisture-wicking and quick-drying next to skin

Find it in

- GripTek™ II Full Seat Breech
- Crossover II® Knee Patch Breech
- Crossover II® Full Seat Breech
- Dynamic™ Extended Knee Patch Bootcut